

Female Breast Cancer in Louisiana

2016 - 2020
STATS AND
FACTS

3,650

NEW CASES FOUND IN
WOMEN EACH YEAR



39,344

BREAST CANCER SURVIVORS[#]
SINCE 2000

The 5-year relative
survival for Louisiana
women of all races⁺

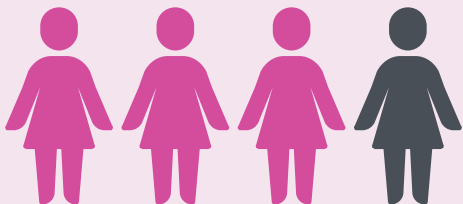
87%

2nd

leading cause of
cancer death among
women in Louisiana

Louisiana's rank in the
US for death rate of
female breast cancer²

4th



In 2022, about 4 out of 5
women 40 years and older
had a mammogram in
Louisiana in the past 2 years.³

STAGE AT DIAGNOSIS DISTRIBUTION

70%

of new cases were
found at early stages
(in situ and localized)

In Louisiana: More
than 9 in 10 people
with localized breast
cancer will survive at
least 5 years

RATE OF NEW CANCER CASES PER 100,000 LOUISIANANS

Black 133.7

White 127.6

RATE OF CANCER DEATHS PER 100,000 LOUISIANANS

Black 29.1

White 20.2

Average annual rate per 100,000 age adjusted to the 2000 US standard population

Risk Factors¹



Increasing Age



Family History or
Inherited Factors



Obesity



Alcohol

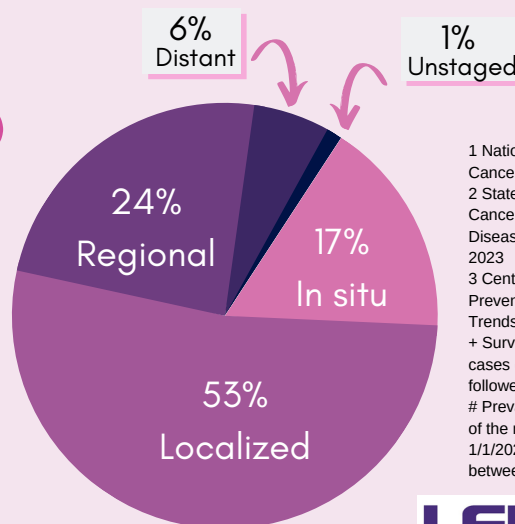


Hormone
Replacement Therapy



Breast or Chest
Radiation

Visit the Louisiana
Cancer Prevention
and Control Program's
Breast Cancer Page
for Screening and Risk
Factor Information



1 National Cancer Institute. Breast Cancer Prevention PDQ. 2023.

2 State Cancer Profiles, National Cancer Institute and Centers for Disease Control and Prevention, 2023

3 Centers for Disease Control and Prevention, BRFSS Prevalence and Trends Data 2022

+ Survival estimates are based on cases diagnosed 2009-2019 and followed through 2020

Prevalence counts are an estimate of the number of survivors on 1/1/2020 who were diagnosed between 2000-2019.

LSU Health
NEW ORLEANS
Louisiana Tumor Registry

Created by James Kinchen

Updated by Simon Zulu | June 2023

LOUISIANA TUMOR REGISTRY



One of 22 NCI-designated SEER cancer registries that gather information about cancer cases to help guide policies for cancer prevention, early detection, diagnosis, treatment, prognosis and survivorship.

OUR MISSION



To collect and report complete, high-quality, and timely population-based cancer data in Louisiana to support cancer research, control, and prevention.

OUR VISION



To reduce suffering and death from cancer using information collected by the Louisiana Tumor Registry.

ANNUAL REPORTS

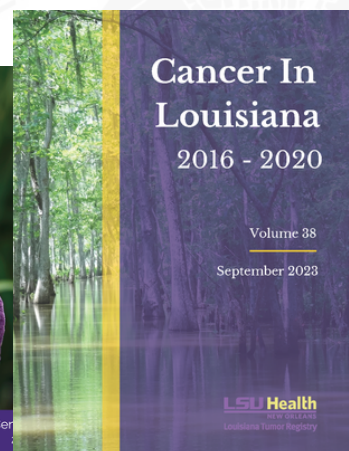


LSU Health
NEW ORLEANS
Louisiana Tumor Registry



Cancer Incidence in Louisiana by Cancer Site

sph.lsuhsoc.edu/louisiana-tumor-registry



March 2023

For more information, please visit:

<https://sph.lsuhsoc.edu/louisiana-tumor-registry>

LTR-info@lsuhsc.edu | (504) 568 - 5757

LSU Health
NEW ORLEANS
Louisiana Tumor Registry

LTR is funded by the SEER Program (NCI), the National Program of Cancer Registries (CDC), and the State of Louisiana.