

Bladder Cancer in Louisiana

2016 - 2020
STATS AND
FACTS

1,004

NEW CASES FOUND
EACH YEAR



7,977

BLADDER CANCER
SURVIVORS SINCE 2000

The 5-year relative
survival for Louisiana
people of all races⁺ **75%**

8th

most common cancer
diagnosis among
people in Louisiana

Louisiana's rank in the
US for death rate of
bladder cancer² **27th**

Bladder cancer is

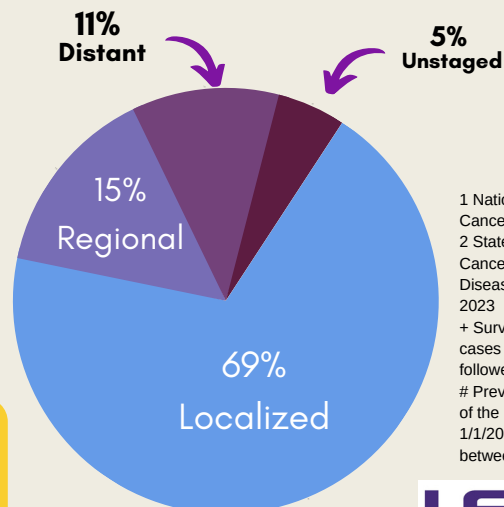
4x

more likely to affect
men compared to
women

STAGE AT DIAGNOSIS DISTRIBUTION



7 in 10
new cases were found
at early stages
(localized) in Louisiana



1 National Cancer Institute. Bladder Cancer Prevention PDQ, 2023
2 State Cancer Profiles, National Cancer Institute and Centers for Disease Control and Prevention, 2023
+ Survival estimates are based on cases diagnosed 2009-2019 and followed through 2020
Prevalence counts are an estimate of the number of survivors on 1/1/2020 who were diagnosed between 2000-2019.

RATE OF NEW CANCER CASES PER 100,000 LOUISIANANS

Black **11.0**

White **21.2**

RATE OF CANCER DEATHS PER 100,000 LOUISIANANS

Black **3.1**

White **4.3**

Average annual rate per 100,000 age adjusted to the 2000 US standard population

Risk Factors¹



Tobacco Smoking



Personal History,
Family History or
Inherited Factors



Pelvic Radiation



Exposures to certain
chemicals at work



Drinking Water Contaminated
with Arsenic or Chlorine



Smoking greatly increases bladder
cancer risk.

If you currently smoke, consider
quitting.¹

LOUISIANA TUMOR REGISTRY



One of 22 NCI-designated SEER cancer registries that gather information about cancer cases to help guide policies for cancer prevention, early detection, diagnosis, treatment, prognosis and survivorship.

OUR MISSION



To collect and report complete, high-quality, and timely population-based cancer data in Louisiana to support cancer research, control, and prevention.

OUR VISION



To reduce suffering and death from cancer using information collected by the Louisiana Tumor Registry.

ANNUAL REPORTS



LSU Health
NEW ORLEANS
Louisiana Tumor Registry



Cancer Incidence in Louisiana by Cancer Site

sph.lsuhsoc.edu/louisiana-tumor-registry



**Cancer In
Louisiana**
2016 - 2020

Volume 38
September 2023

LSU Health
NEW ORLEANS
Louisiana Tumor Registry

March 2023

For more information, please visit:

<https://sph.lsuhsoc.edu/louisiana-tumor-registry>

LTR-info@lsuhsc.edu | (504) 568 - 5757

LSU Health
NEW ORLEANS
Louisiana Tumor Registry

LTR is funded by the SEER Program (NCI), the National Program of Cancer Registries (CDC), and the State of Louisiana.