

Introduction to NCI:

Mark Alexander

Public Health Advisor, National Cancer Institute

April 10 2019

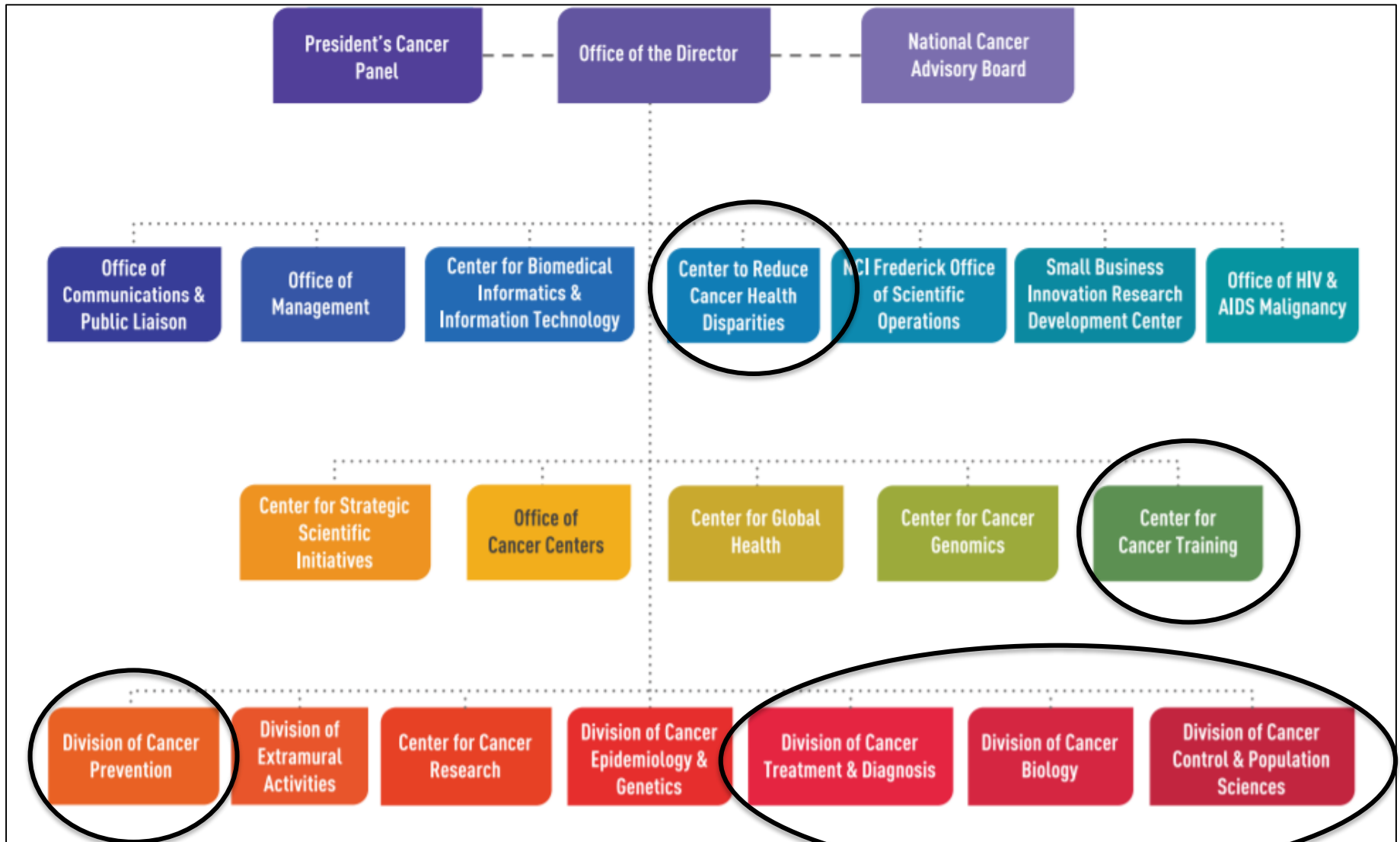
Thanks to the Organizing Committee

- Augusto Ochoa - Louisiana State University
- Edward Trapido - Louisiana State University
- Maureen Y. Lichtveld - Louisiana State University
- Lucio Miele - Louisiana State University
- Rick Zimmerman - Louisiana State University
- Patricia Arteaga - Louisiana State University
- Tom Wiese - Xavier University
- John Ruckdeschel - University of Mississippi
- Nita Mahihle – University of Mississippi
- Stephania Cormier - Louisiana State University
- Pascal Jean-Pierre - Florida State University

OVERVIEW

NCI has 30 divisions, offices, and centers who work together to build, maintain, and enhance a cohesive and comprehensive cancer research agenda.

NCI ORGANIZATIONAL CHART



Who are we - NCI's Extramural Program

NCI Extramural Divisions and Centers

- **Division of Cancer Biology (DCB):** encourages and facilitates support of basic research in all areas of cancer biology to provide the research foundation which enables improved understanding of the disease and may lead to new approaches for prevention, diagnosis, and treatment.
- **Division of Cancer Prevention (DCP):** conducts and supports research to find ways to prevent and detect cancer, and to prevent or relieve symptoms from cancer and its treatments.
- **Division of Cancer Control and Populations Sciences (DCCPS):** conducts and supports an integrated program of genetic, epidemiological, behavioral, social, applied, and surveillance cancer research to reduce risk, incidence, and deaths from cancer as well as enhance the quality of life for cancer survivors.

NCI Extramural Divisions and Centers

- **Division of Cancer Treatment and Diagnosis (DCTD)**: supports the translation of promising research into clinical applications to improve the diagnosis and treatment of cancer in areas of unmet need that are often too risky or difficult for industry or academia to develop alone.
- **Center to Reduce Cancer Health Disparities (CRCHD)**: conducts basic, clinical, translational, and population-based cancer disparities research; trains the next generation of competitive cancer researchers from diverse populations; and creates regional cancer health disparities networks to reduce the unequal burden of cancer in our society.
- **Center for Cancer Training (CCT)**: provides funding to support training and career development at institutions nationwide and manages training programs at NCI's laboratories, clinics, and research groups to develop a 21st century workforce capable of advancing cancer research.

NCI Staff

- Joanna Watson - Division of Cancer Biology
- Damali Martin - Division of Cancer Control and Population Science
- Kevin Dodd - Division of Cancer Prevention
- Susan Perkins - Center for Cancer Training
- Tiffany Wallace - Center to Reduce Cancer Health Disparities
- Stephanie Land - Division of Cancer Control and Population Science
- Tawnya McKee - Division of Cancer Treatment and Diagnosis
- Mark Alexander- Division of Cancer Control and Population Science
- Robert Croyle - Division of Cancer Control and Population Science
Interim Director, Center for Global Health



**NATIONAL
CANCER
INSTITUTE**

www.cancer.gov

www.cancer.gov/espanol