

Louisiana Cancer Facts & Figures, Oral Cavity and Pharynx Cancer

Louisiana Tumor Registry

September, 2017

Oral Cavity and Pharynx Cancer*

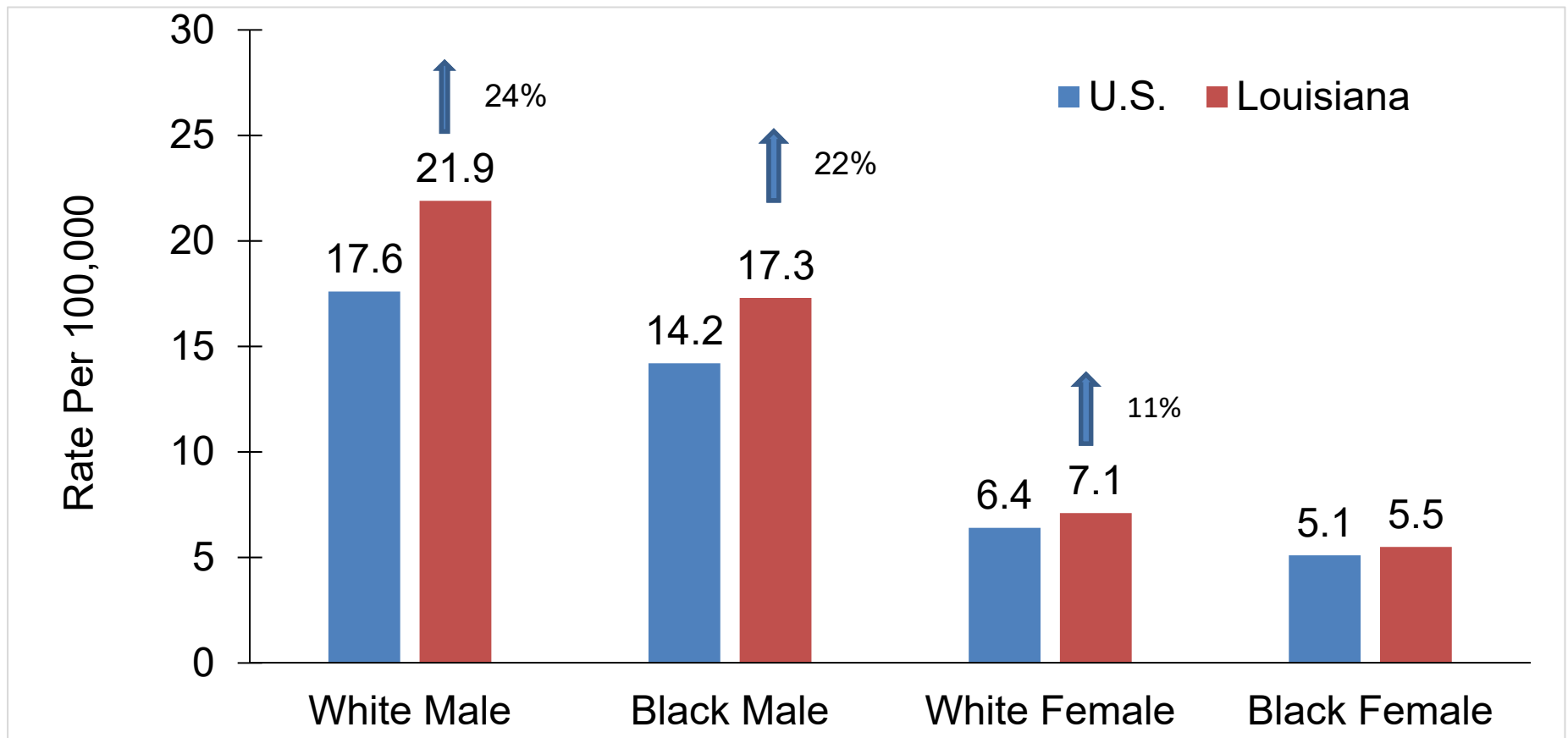
- From 2010 to 2014, Louisiana had the 3rd highest incidence rate and 2nd highest death rate of oral cavity and pharynx cancer of any state in the nation (all races and sexes combined).¹
- About 740 new oral cavity and pharynx cancer cases are expected to be diagnosed and about 170 persons are expected to die of this cancer in Louisiana in 2017.²

* ICD-O-3/WHO 2008 code: C000-C009, C019-C029, C079-C089, C040-C049, C030-C039, C050-C059, C060-C069, C110-C119, C090-C099, C100-C109, C129, C130-C139, C140, C142, C148; excluding ICD-O-3 histology (type): 9050-9055, 9140, 9590-9992

1. Data source: [USCS](#).

2. Data source: [American Cancer Society, Cancer Facts & Figures 2017](#).

Oral Cavity and Pharynx[#]: Incidence Rates¹, Louisiana vs. U.S.,² 2010-2014



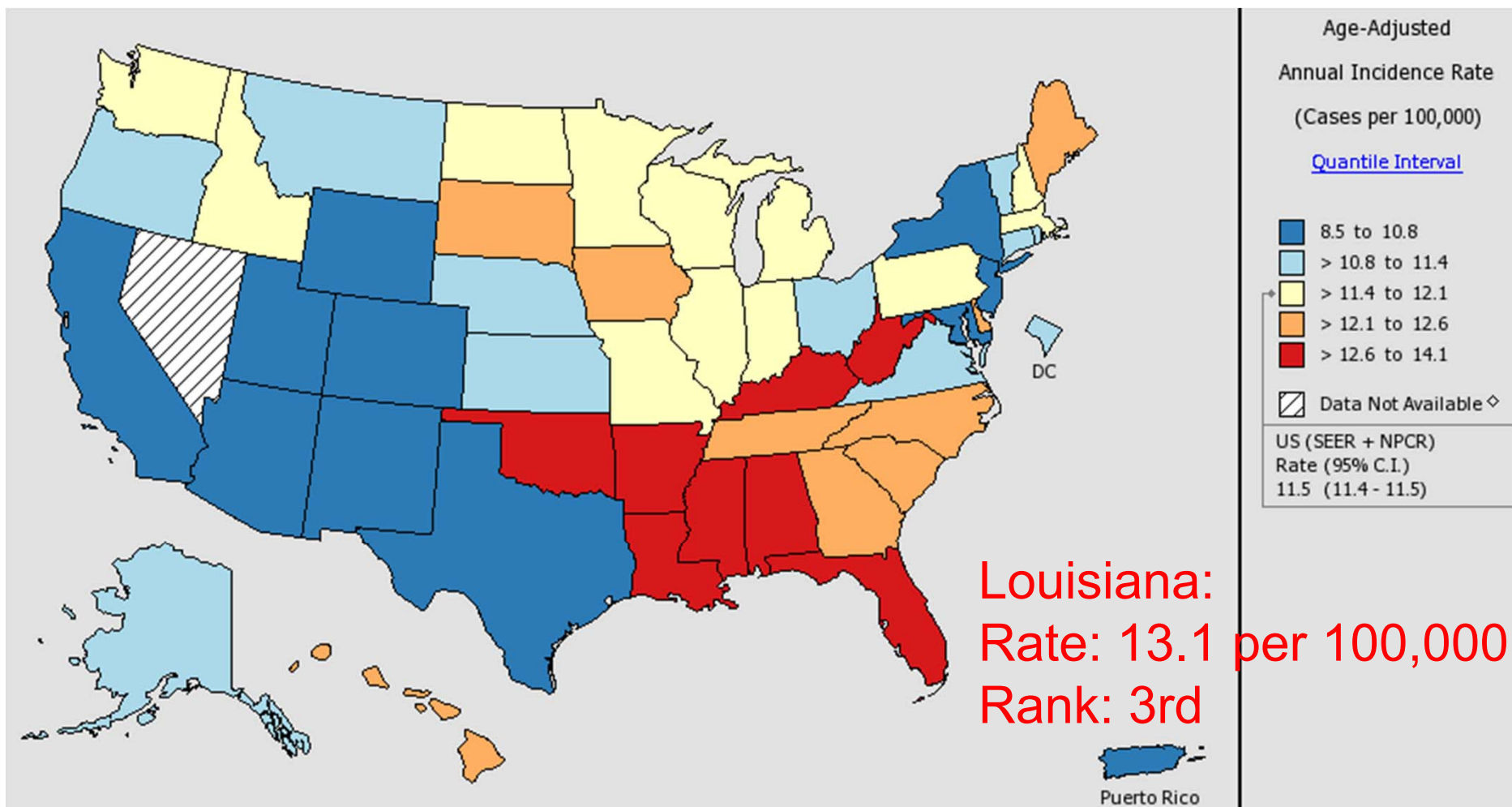
[#]Only invasive cases.

¹Age-adjusted to the 2000 U.S. standard population.

² Incidence data source: [18 SEER registries](#).

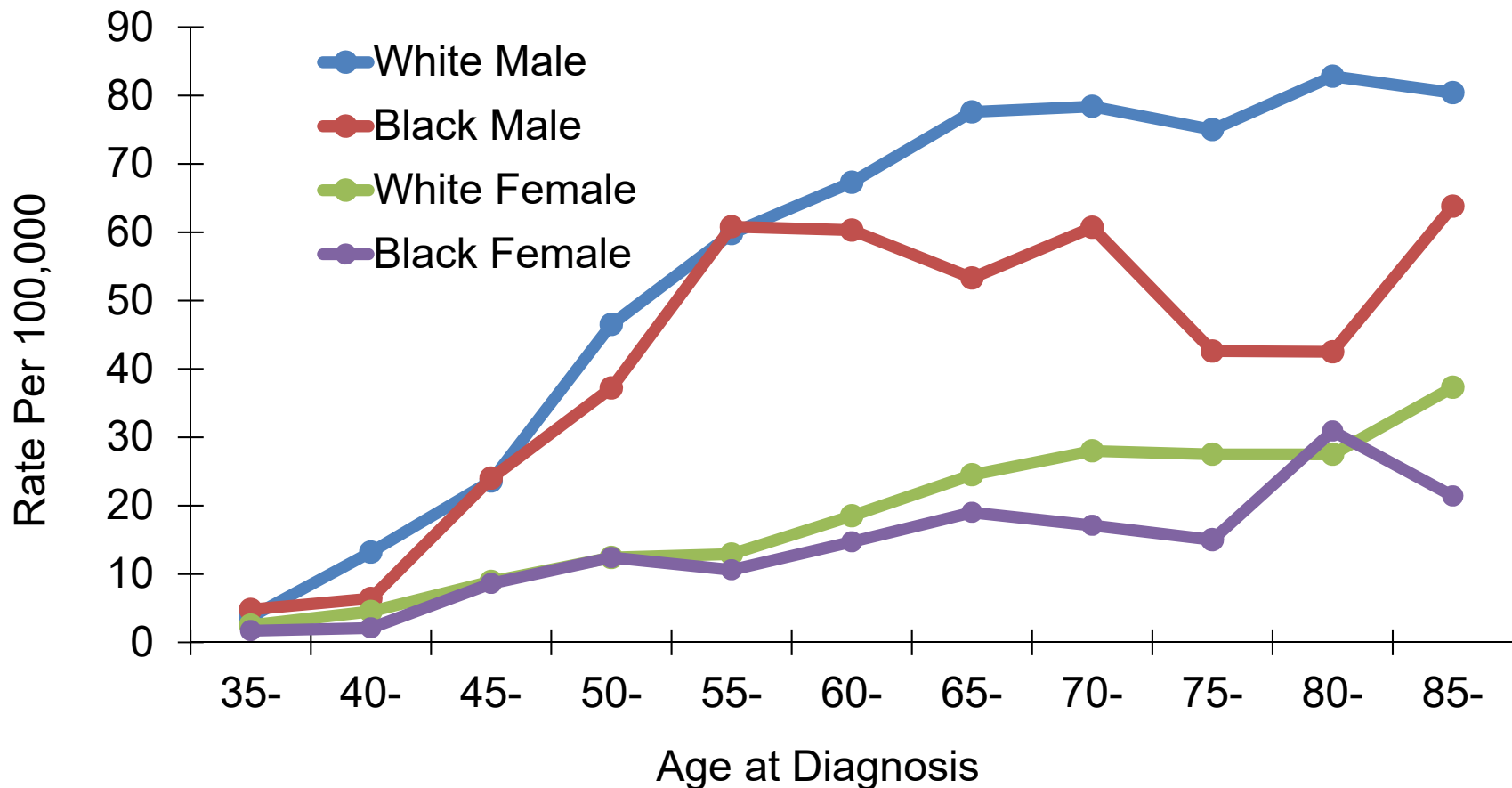
↑ Incidence rate of Louisiana is significantly different from that of the U.S.

Incidence Rates# of Oral Cavity and Pharynx Cancer in the U.S., All Races, Both Sexes, 2010-2014



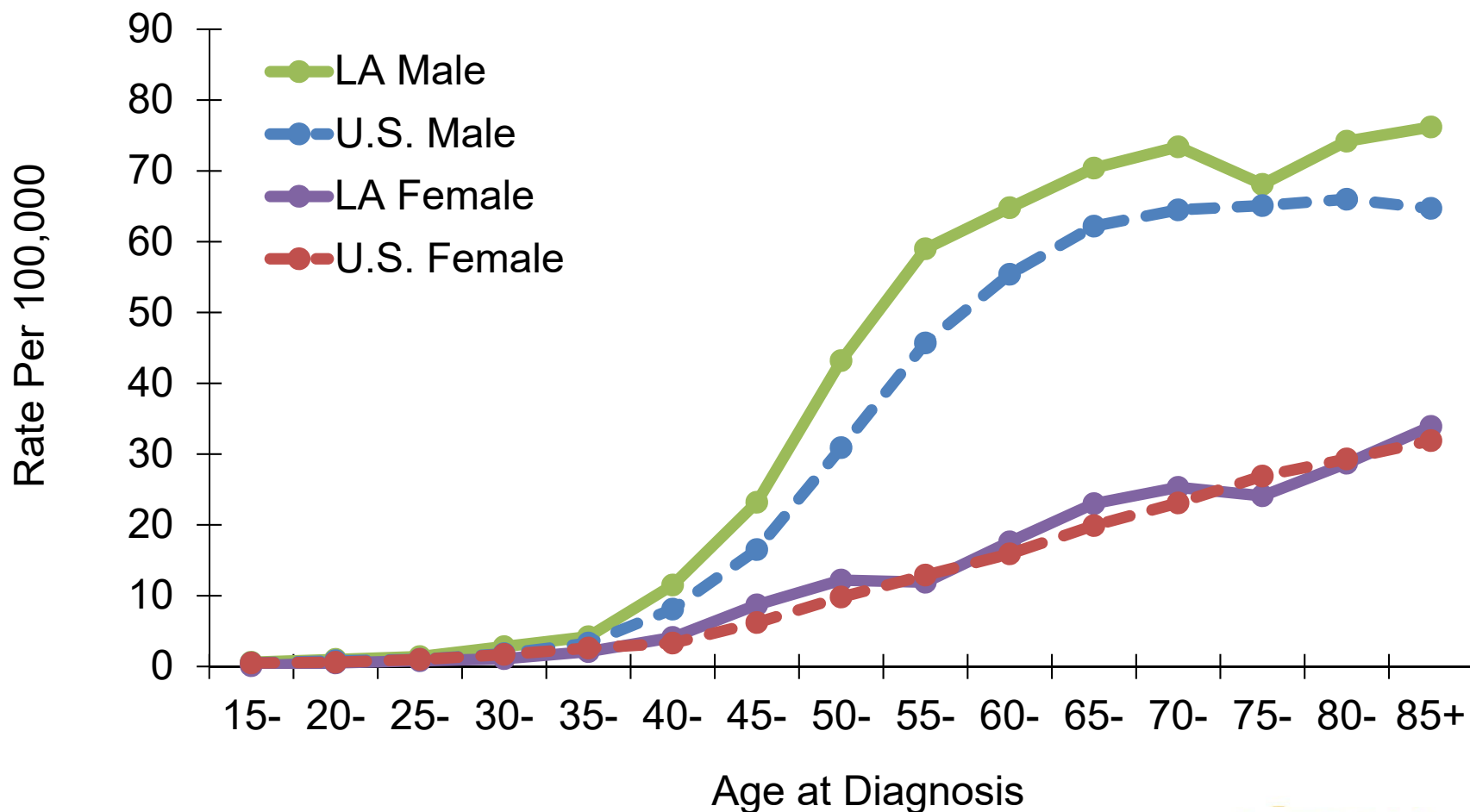
#Only invasive cases.

Oral Cavity and Pharynx Cancer: Age-Specific Incidence Rates# Louisiana, 2010-2014



#Only invasive cases.

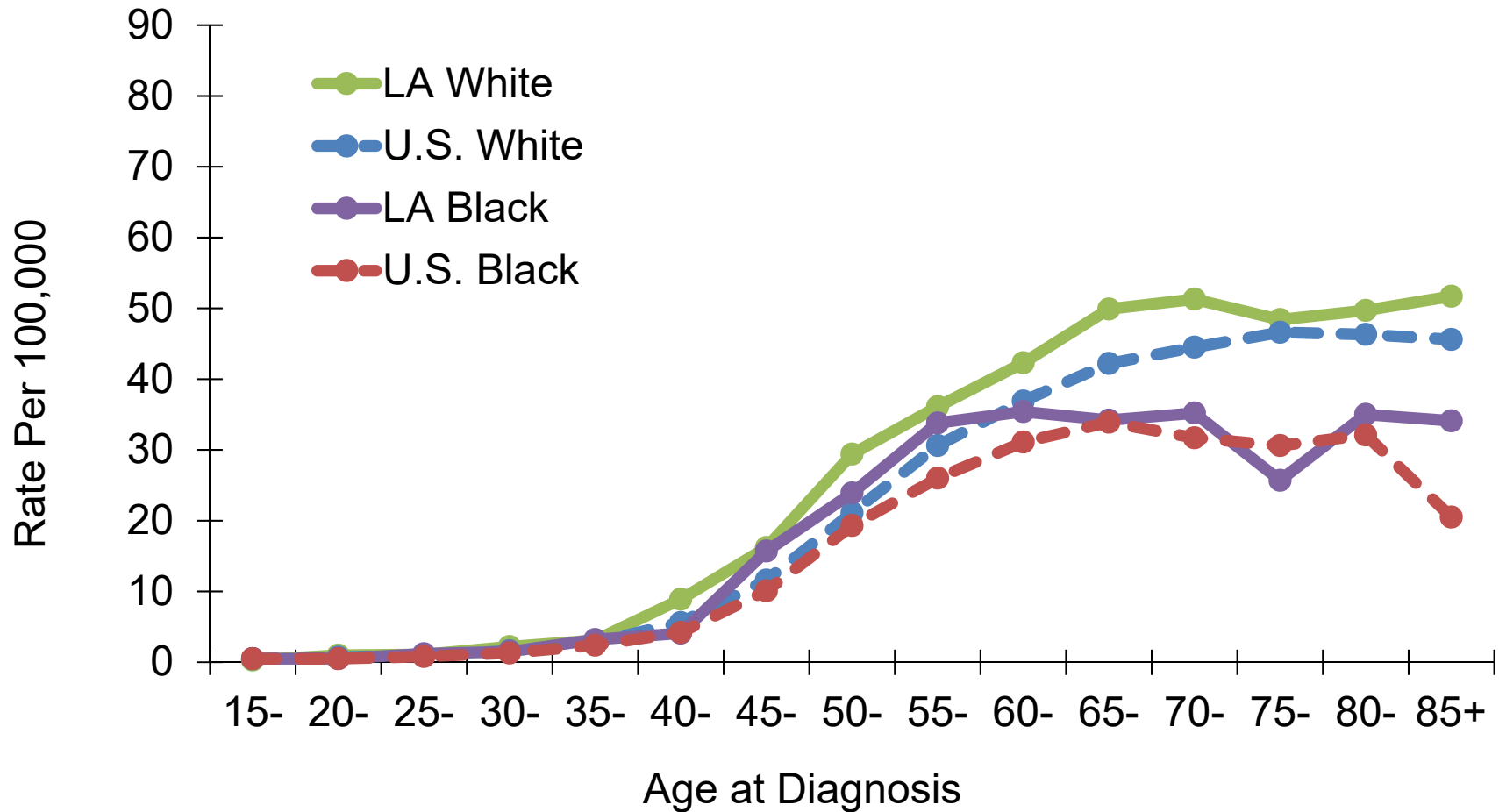
Oral Cavity and Pharynx Cancer: Age-Specific Incidence Rates[#] by Gender, 2010-2014



[#]Only invasive cases.

U.S. data source: [18 SEER registries](#).

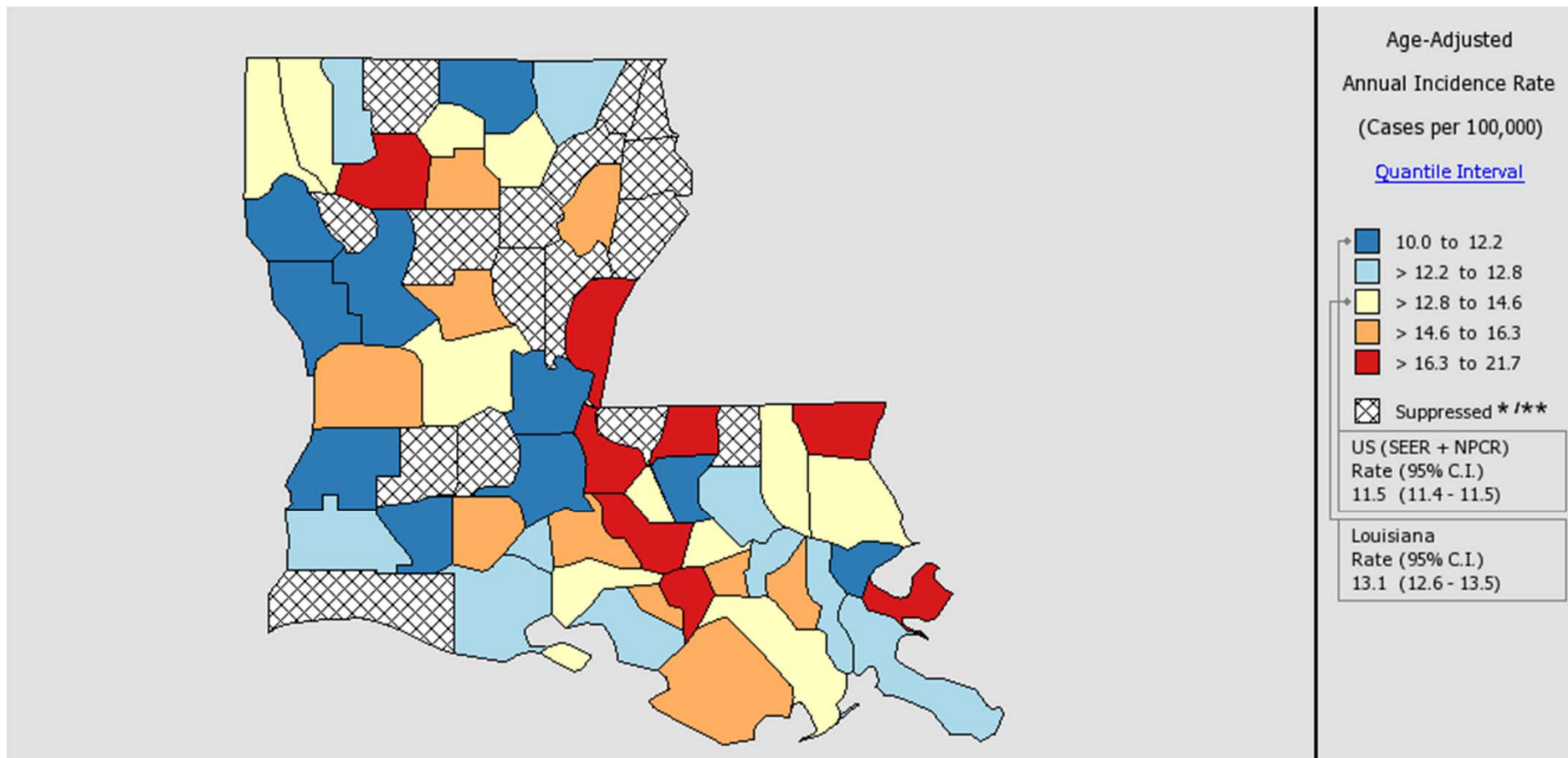
Oral Cavity and Pharynx Cancer: Age-Specific Incidence Rates[#] by Race, 2010-2014



[#]Only invasive cases.

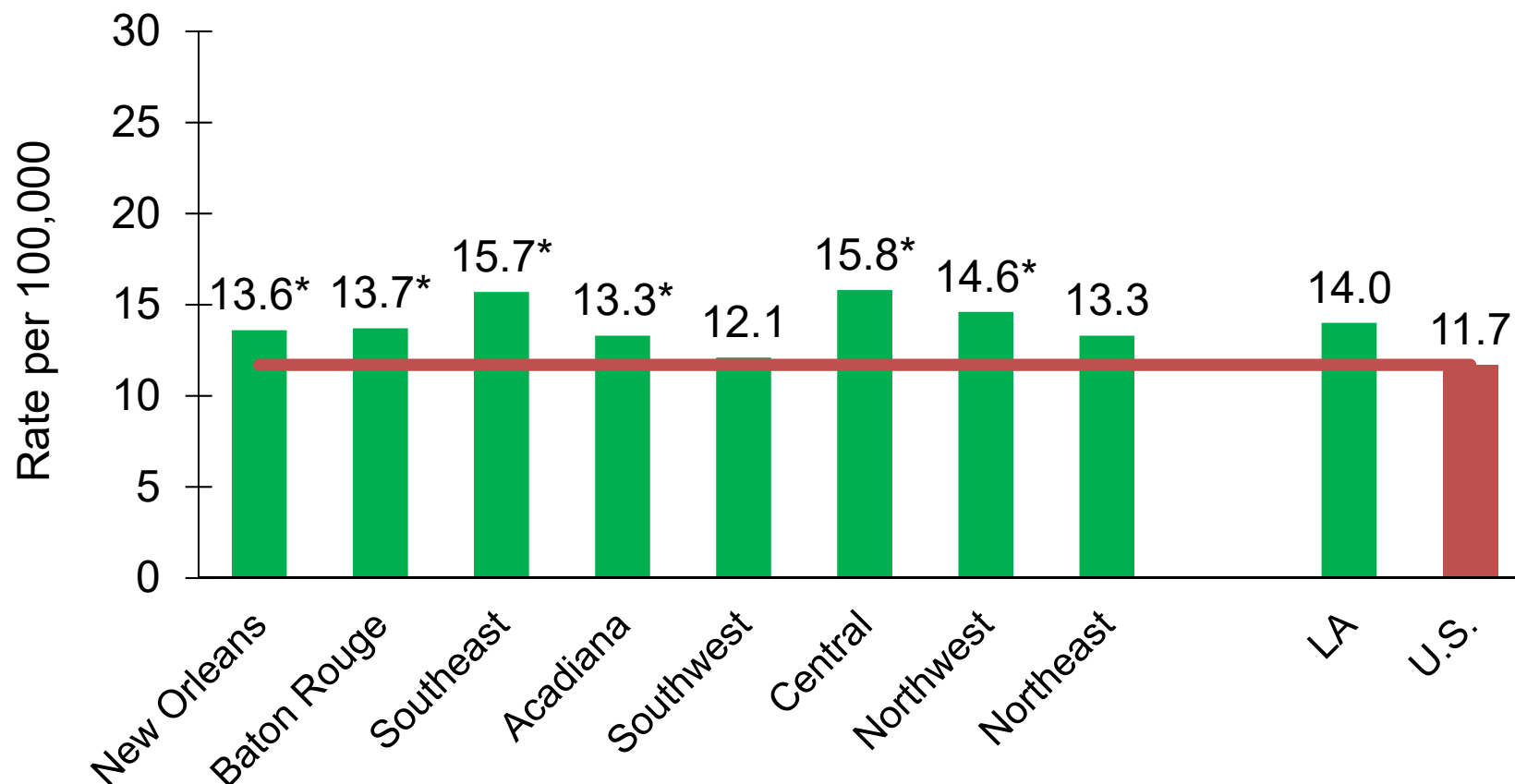
U.S. data source: [18 SEER registries](#).

Incidence Rates[#] of Oral Cavity and Pharynx Cancer in Louisiana, All Races, Both Sexes, 2010-2014



#Only invasive cases.

Oral Cavity and Pharynx Cancer Incidence Rates^{#,1,2} by Region³: Louisiana, Whites, 2010-2014



#Only invasive cases.

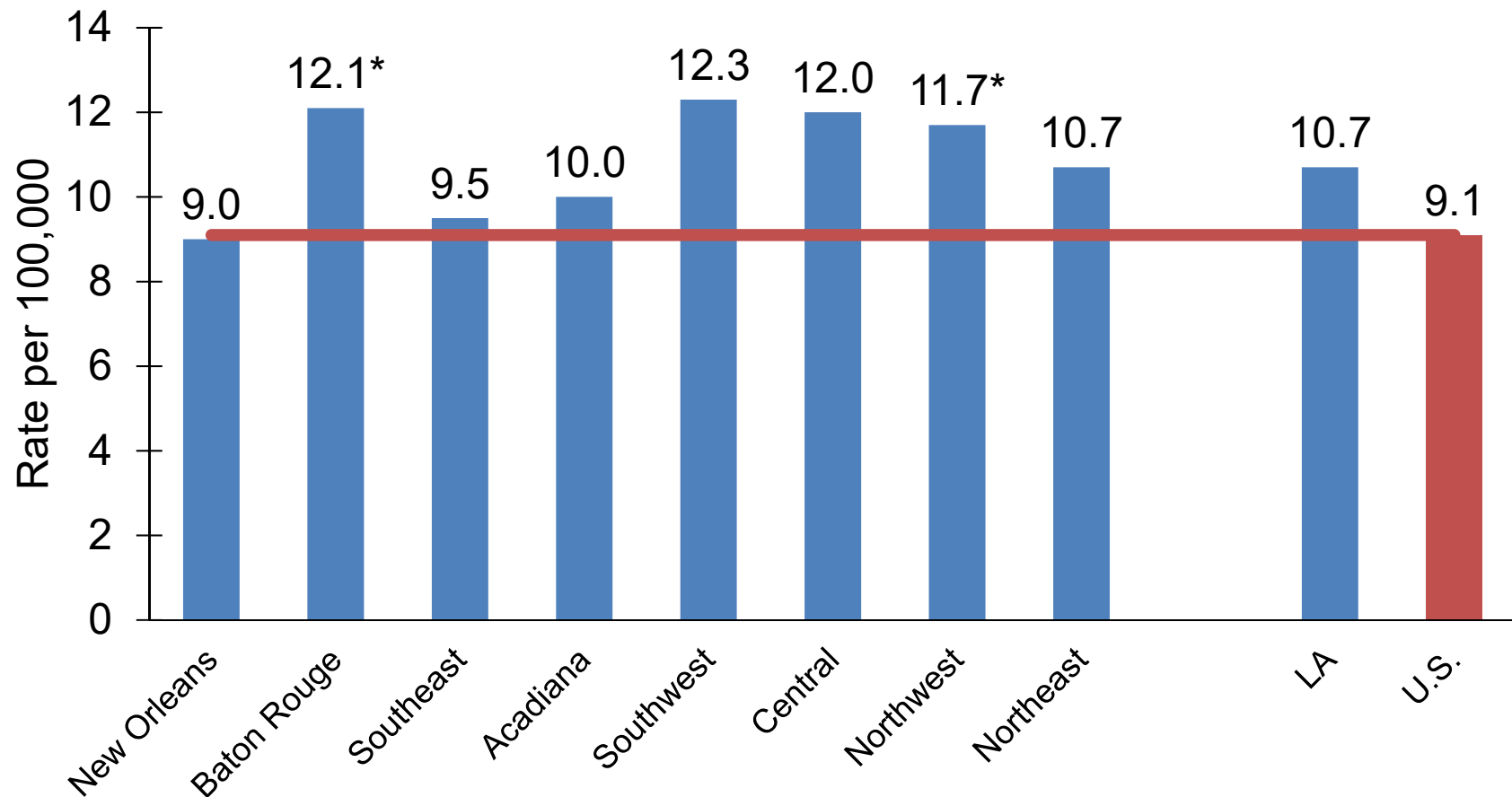
¹ Age-adjusted to the 2000 U.S. standard population.

² Data source for U.S. was the [18 SEER registries](#).

³ See Appendix A for [Regions in the Louisiana Tumor Registry](#).

* Incidence rate of regions/Louisiana is significantly different from that of the U.S.

Oral Cavity and Pharynx Cancer Incidence Rates^{#,1,2} by Region, Louisiana, Blacks, 2010-2014



#Only invasive cases.

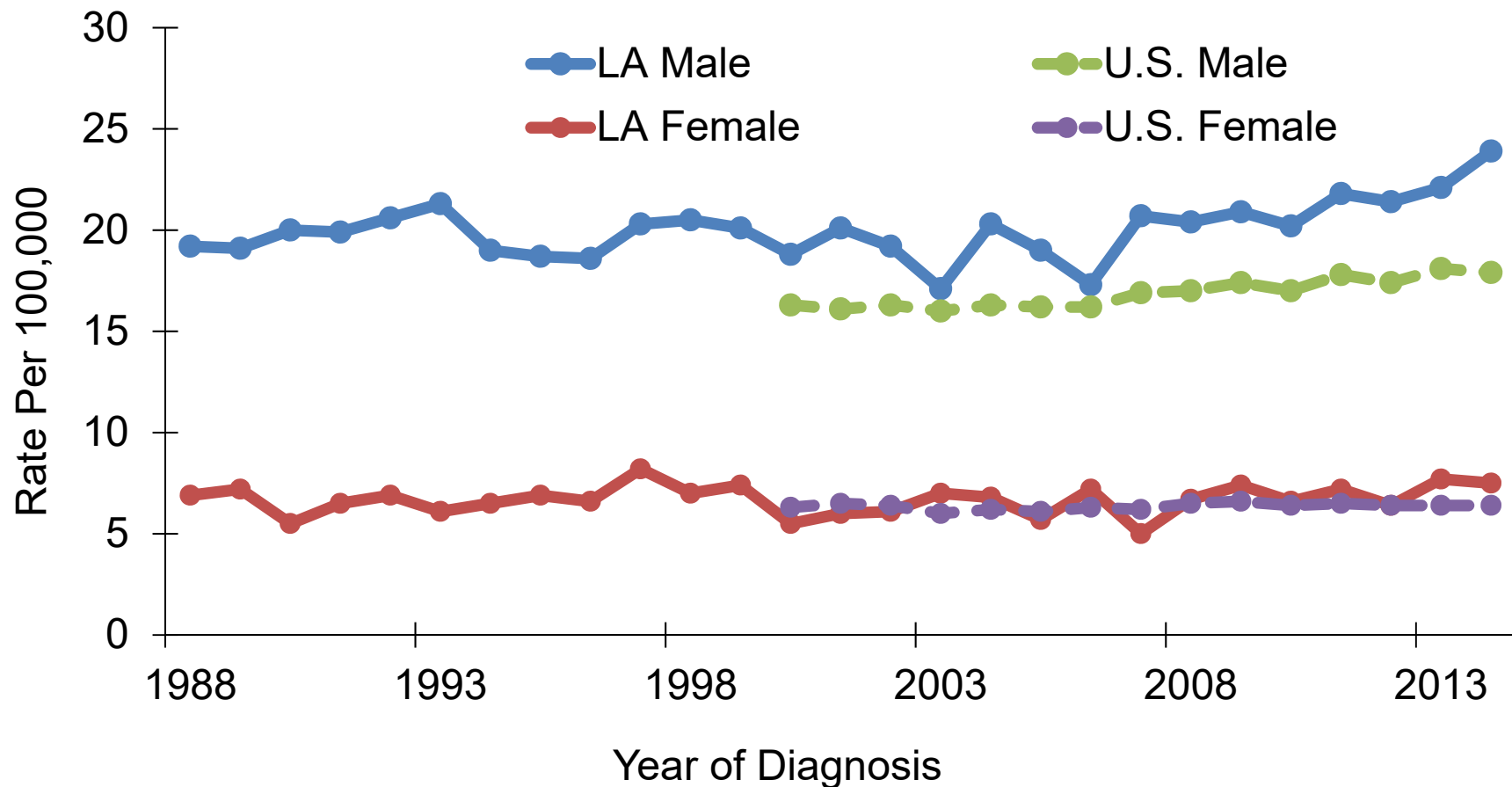
¹ Age-adjusted to the 2000 U.S. standard population.

² Data source for U.S. was [the 18 SEER registries](#).

³ See Appendix A for [the regions in the Louisiana Tumor Registry](#).

* Incidence rate of regions/Louisiana is significantly different from that of the US.

Oral Cavity and Pharynx Cancer: Trends of Incidence Rates^{#,1,2}, Whites, 1988-2014

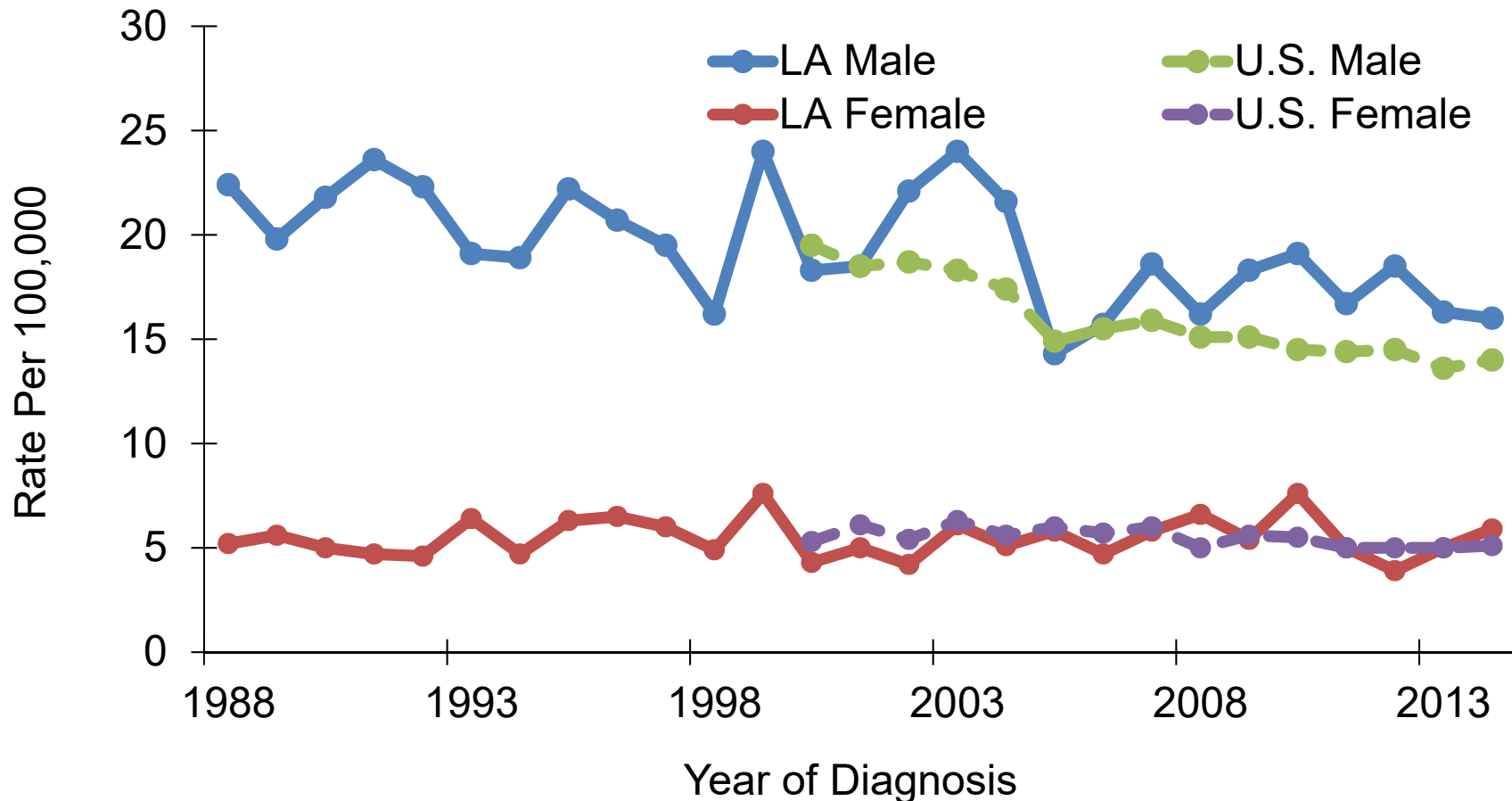


[#]Only invasive cases.

¹ Age-adjusted to the 2000 U.S. standard population.

² U.S. data source: [18 SEER registries](#).

Oral Cavity and Pharynx Cancer: Trends of Incidence Rates^{#,1,2}, Blacks, 1988-2014

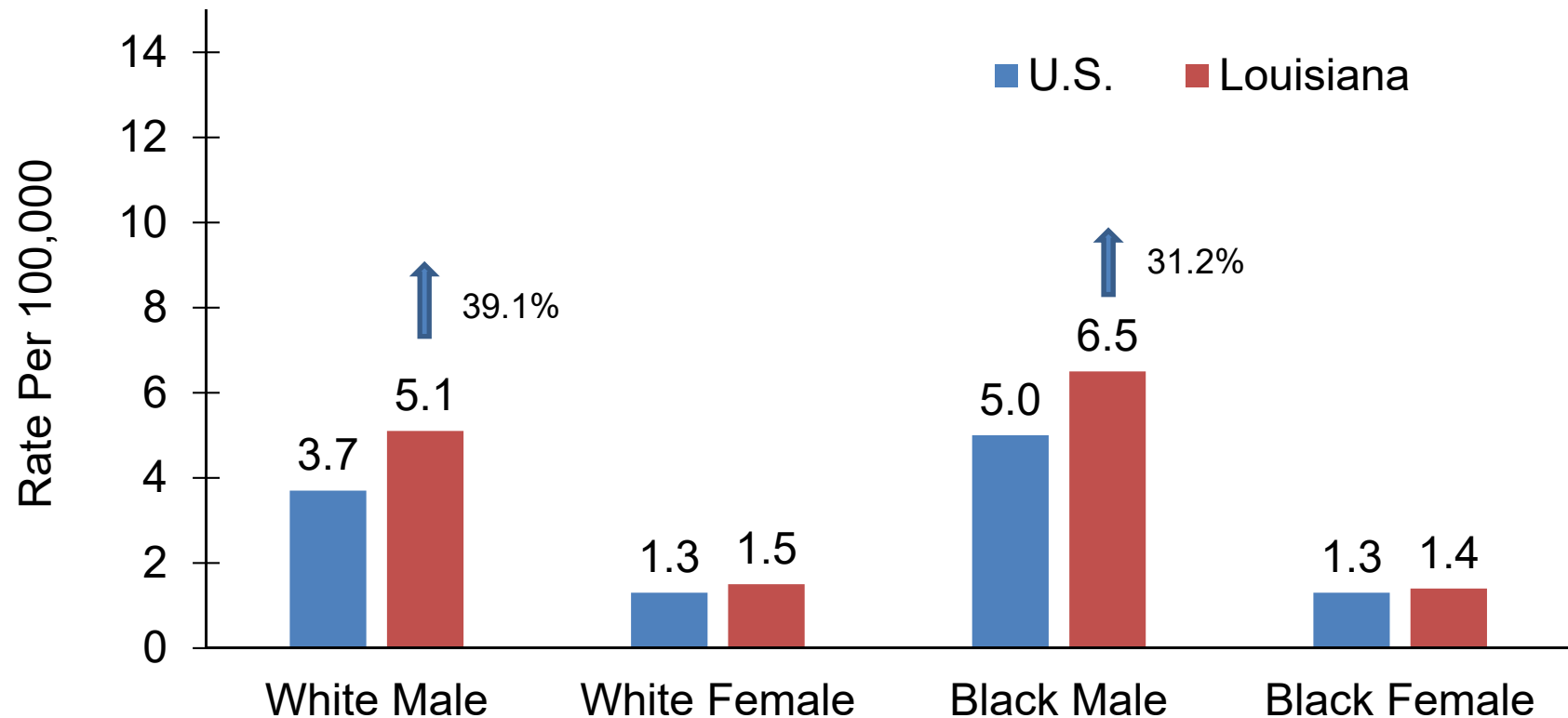


#Only invasive cases.

¹ Age-adjusted to the 2000 U.S. standard population.

² U.S. data source: [18 SEER registries](#).

Oral Cavity and Pharynx Cancer: Mortality Rates¹, Louisiana vs. U.S.², 2009-2013

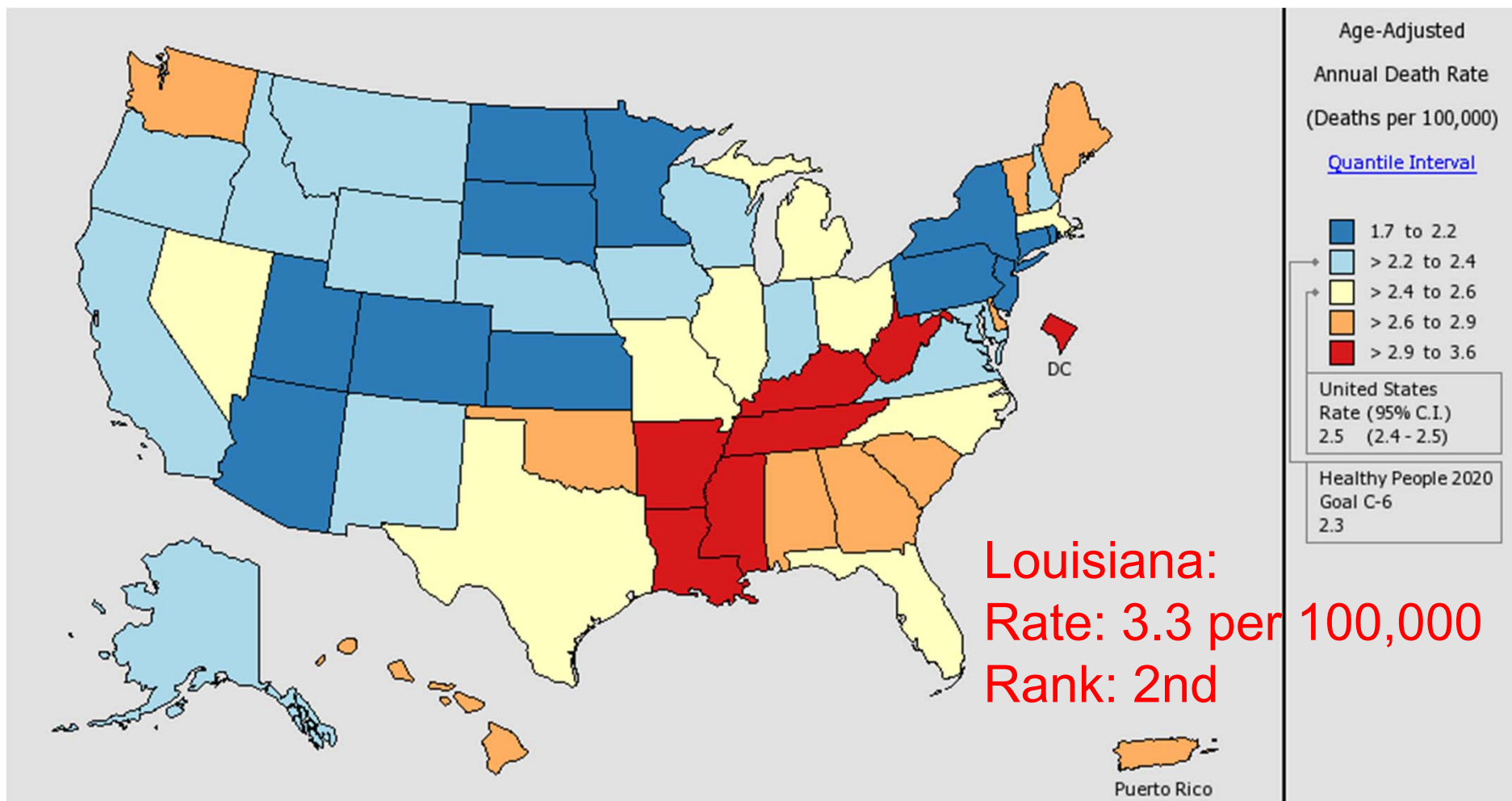


¹ Age-adjusted to the 2000 U.S. standard population.

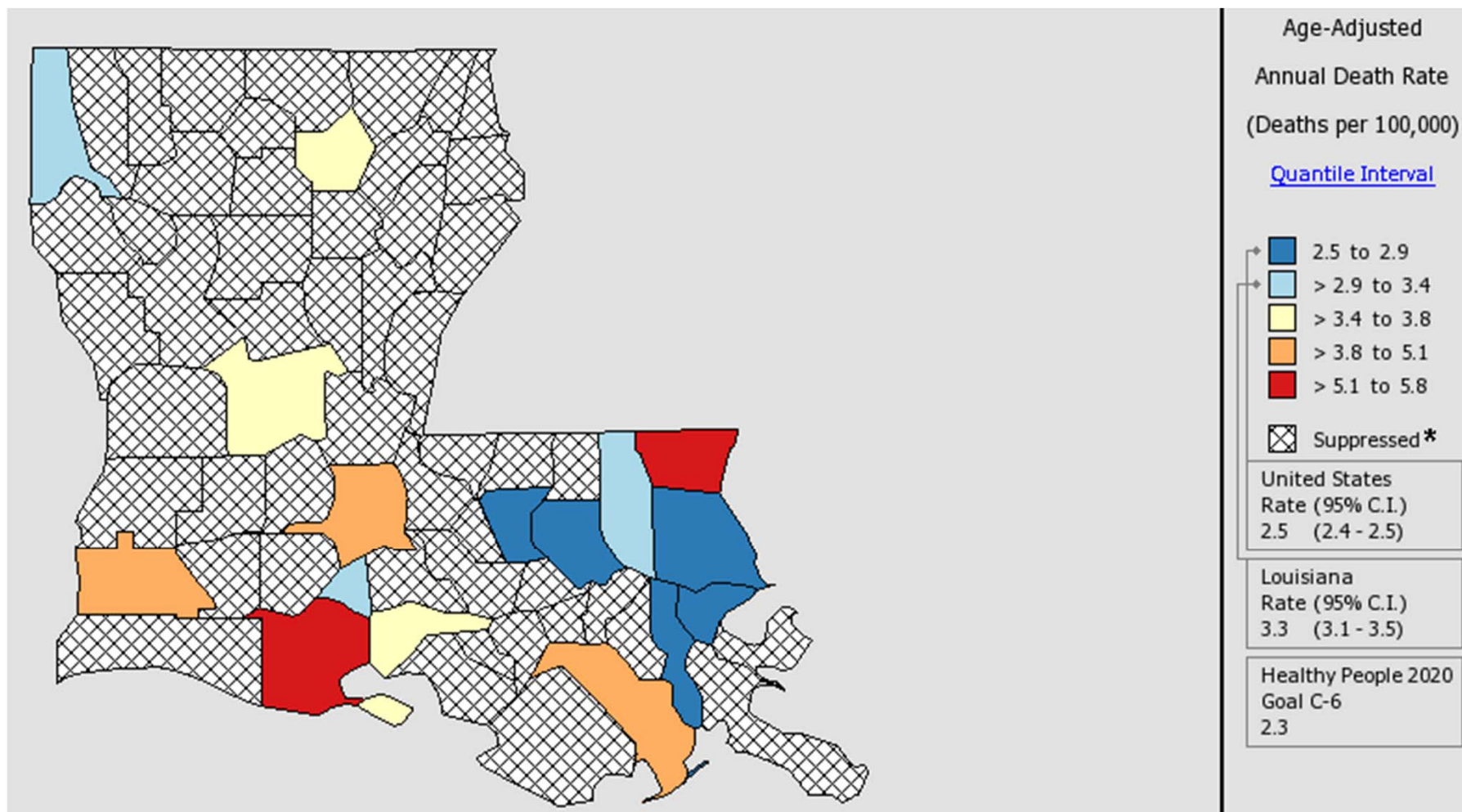
² Data source: [National Center of Health Statistics \(NCHS\)](#).

↑ The rate of Louisiana is significantly different from that of the U.S.

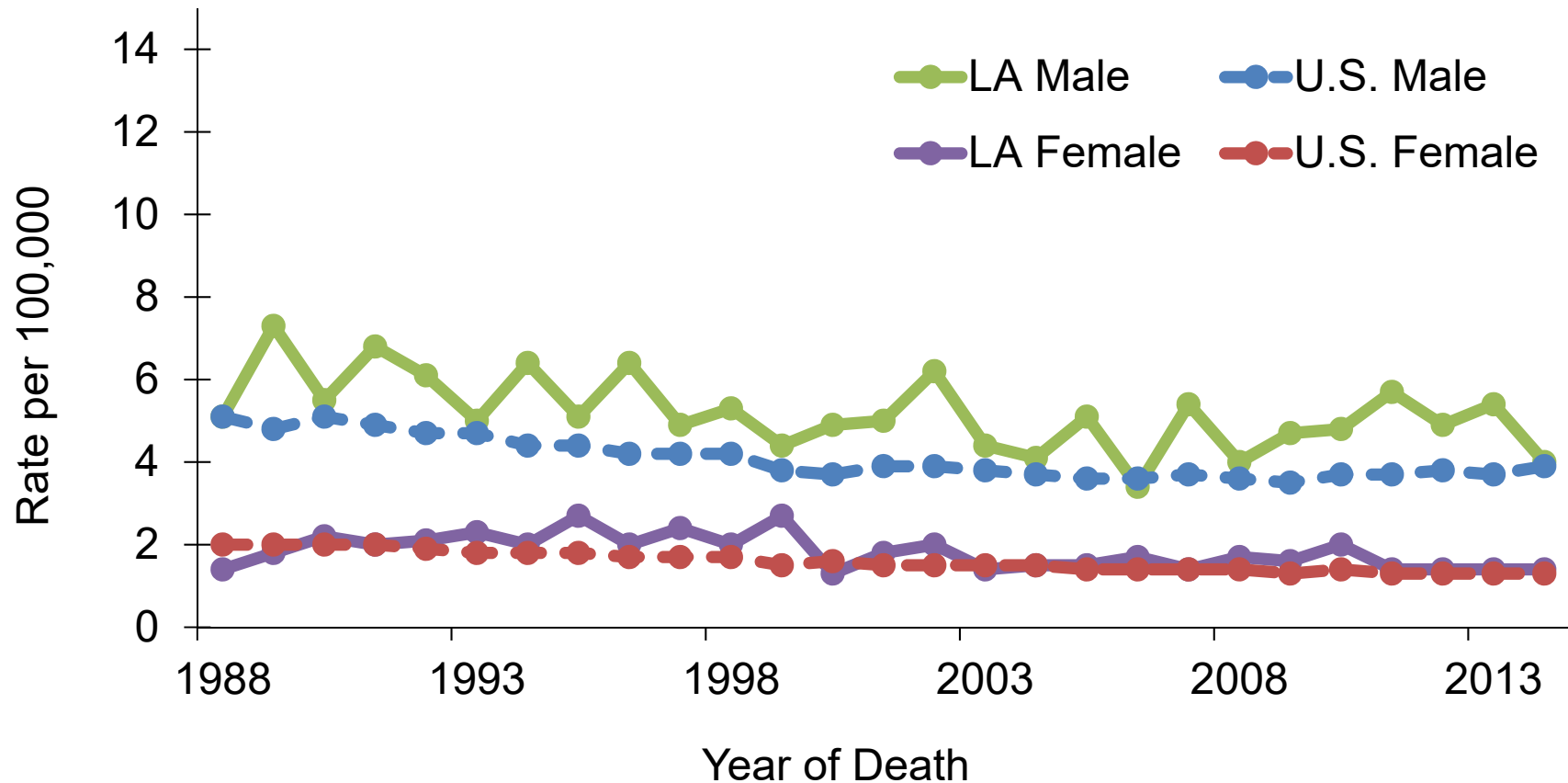
Mortality Rates of Oral Cavity and Pharynx Cancer in the U.S., All Races, Both Sexes, 2010-2014



Mortality Rates of Oral Cavity and Pharynx Cancer in Louisiana, All Races, Both Sexes, 2010-2014



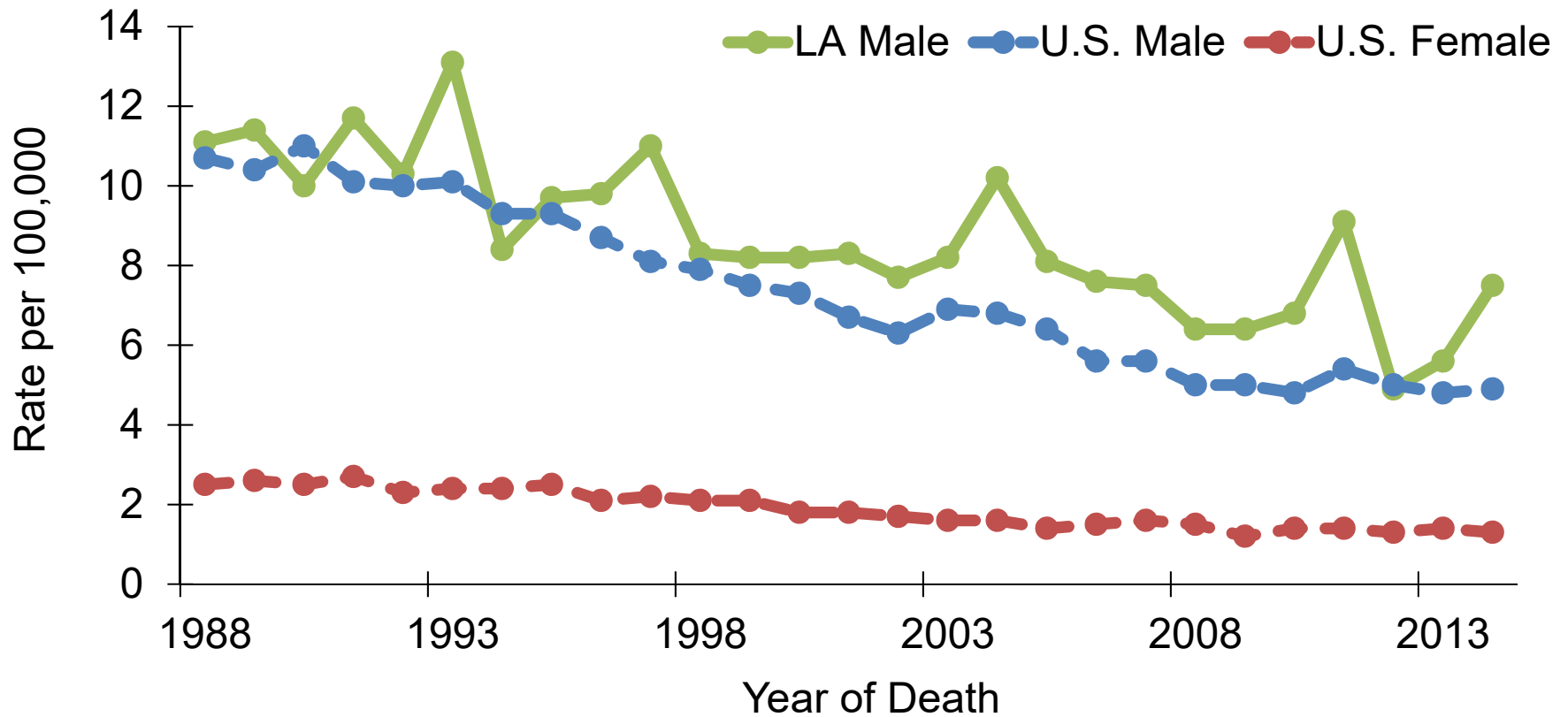
Oral Cavity and Pharynx Cancer: Trends of Mortality Rates^{1,2}, Whites, 1988-2014



¹ Adjusted to the 2000 U.S. standard population.

² Data source: [National Center of Health Statistics \(NCHS\)](#).

Oral Cavity and Pharynx Cancer: Trends of Mortality Rates^{1,2,3}, Blacks, 1988-2014



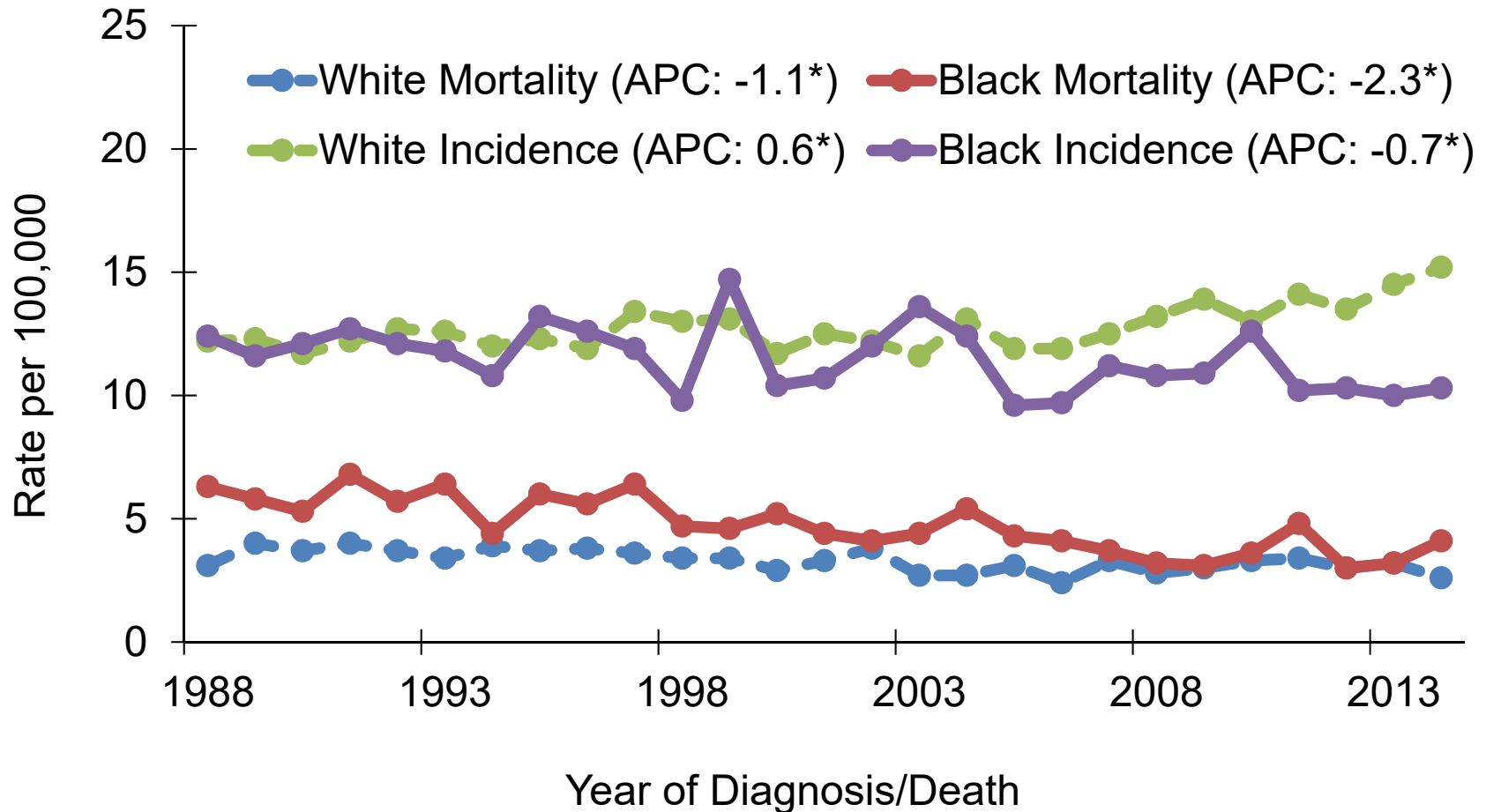
¹ Age-adjusted to the 2000 U.S. standard population.

² Data source: [National Center of Health Statistics \(NCHS\)](#).

³ Louisiana female mortality rate trends could not be calculated due to small case counts.

Oral Cavity and Pharynx Cancer: Louisiana

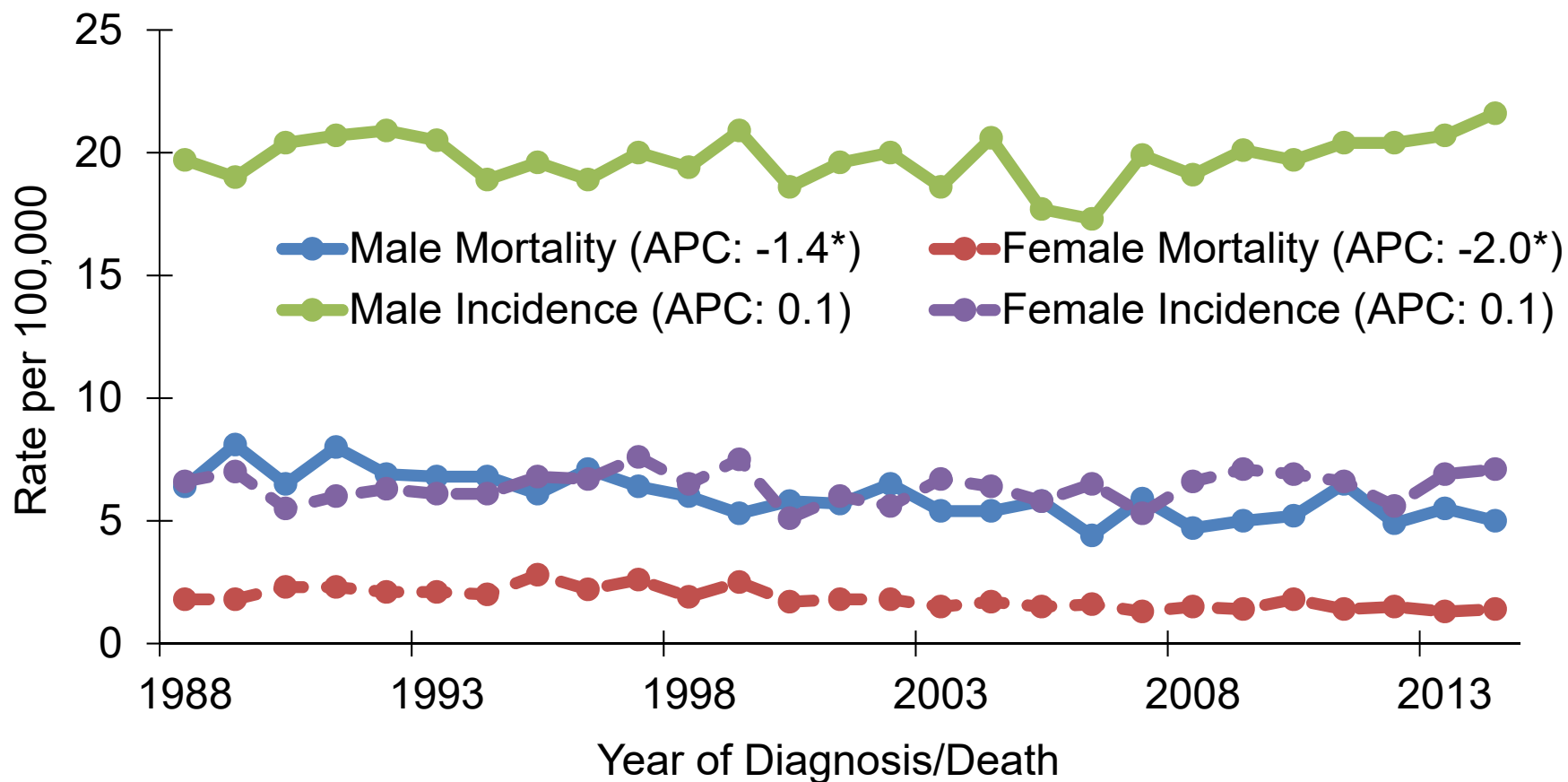
Trends of Incidence[#] and Mortality Rates by Race, 1988-2014



[#]Only invasive cases.

Annual average percent change (APC) were calculated using weighted least squares method.

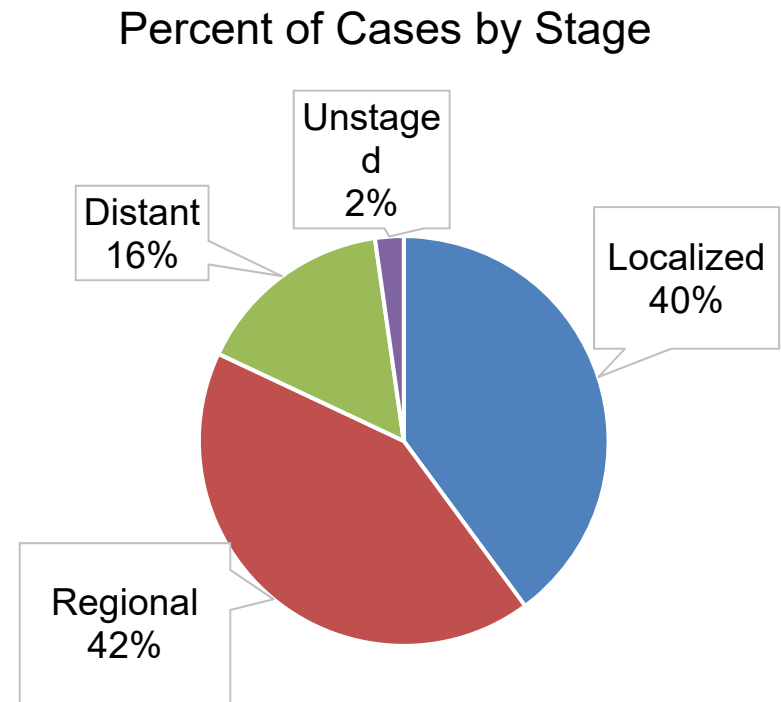
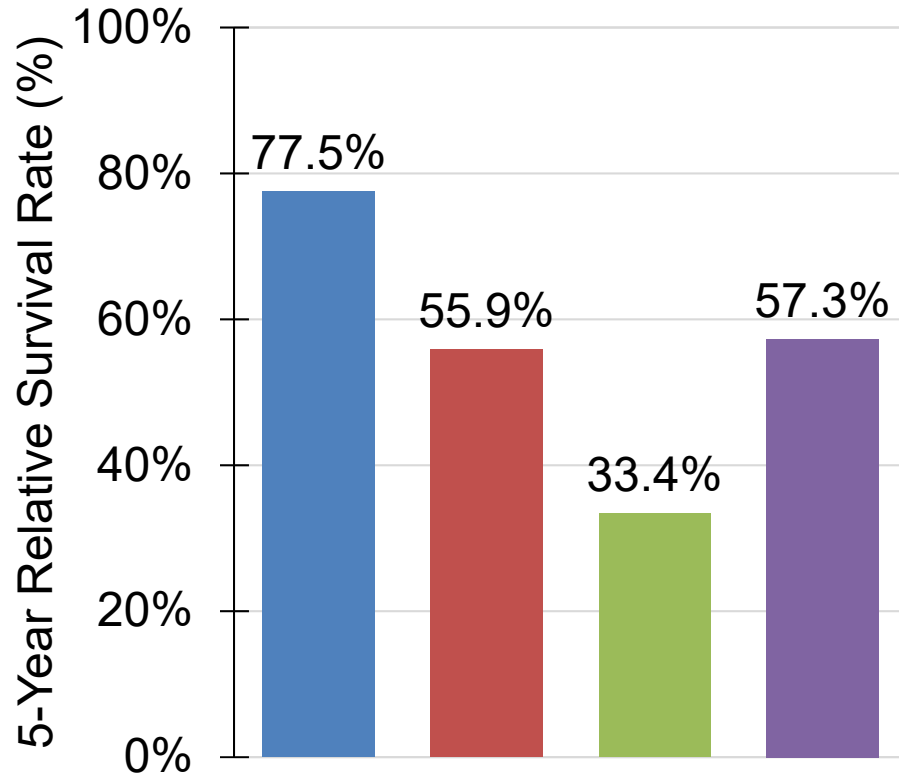
Oral Cavity and Pharynx Cancer: Louisiana Trends of Incidence[#] and Mortality Rates by Gender, 1988-2014



[#]Only invasive cases.

Annual average percent change (APC) were calculated using weighted least squares method.

Oral Cavity and Pharynx Cancer#: Louisiana 5-Year Relative Survival by Stage¹, All Races, Both Sexes, 2007-2013

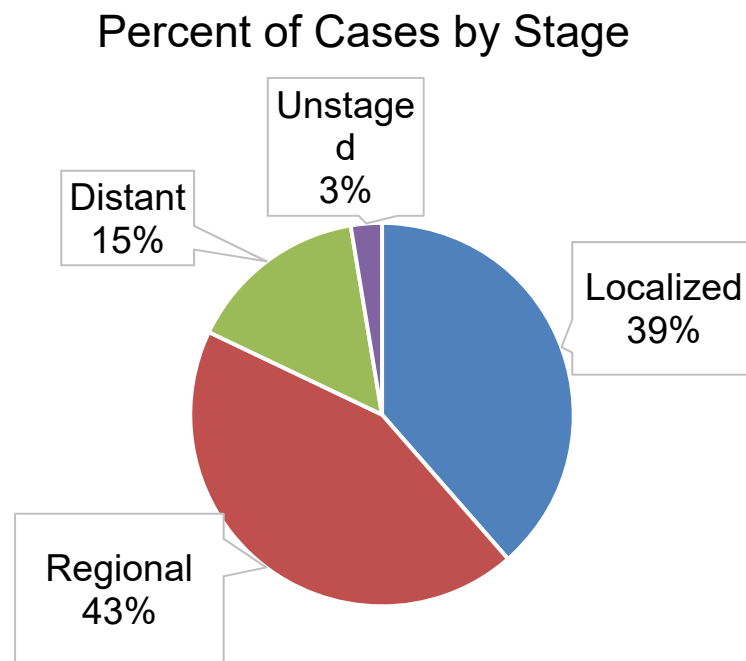
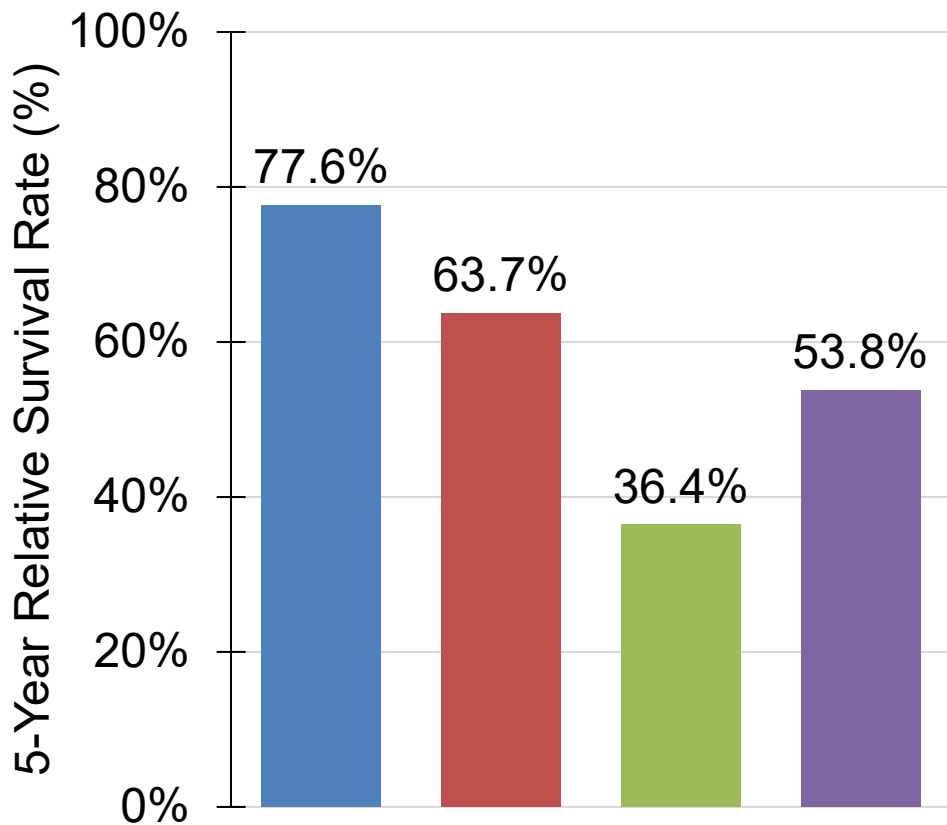


■ Localized ■ Regional ■ Distant ■ Unstaged

#Only invasive cases.

¹ The stage distribution is based on Summary Stage 2000.

Oral Cavity and Pharynx Cancer#: Louisiana 5-Year Relative Survival by Stage¹, White Males, 2007-2013

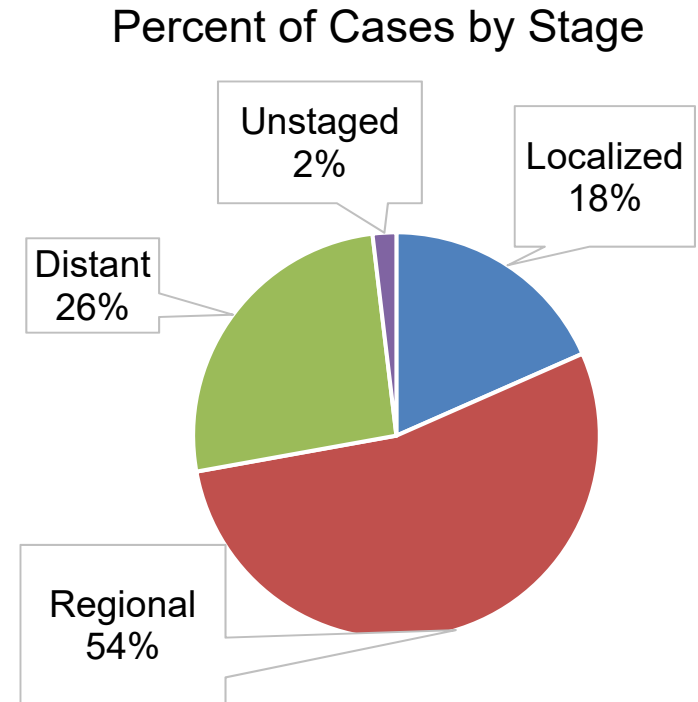
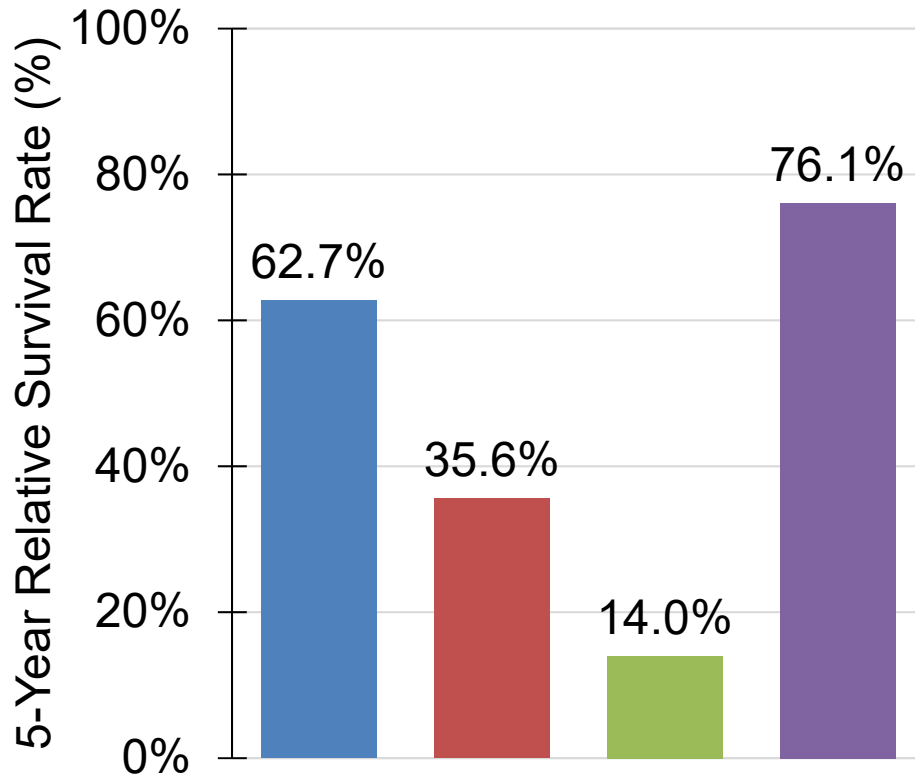


■ Localized ■ Regional ■ Distant ■ Unstaged

#Only invasive cases.

¹ The stage distribution is based on Derived Summary Stage 2000.

Oral Cavity and Pharynx Cancer#: Louisiana 5-Year Relative Survival by Stage¹, Black Males, 2007-2013

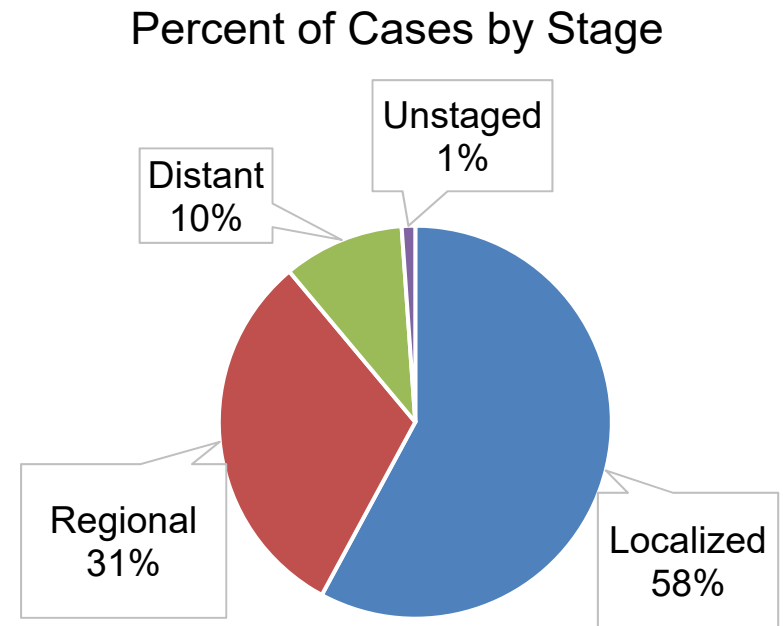
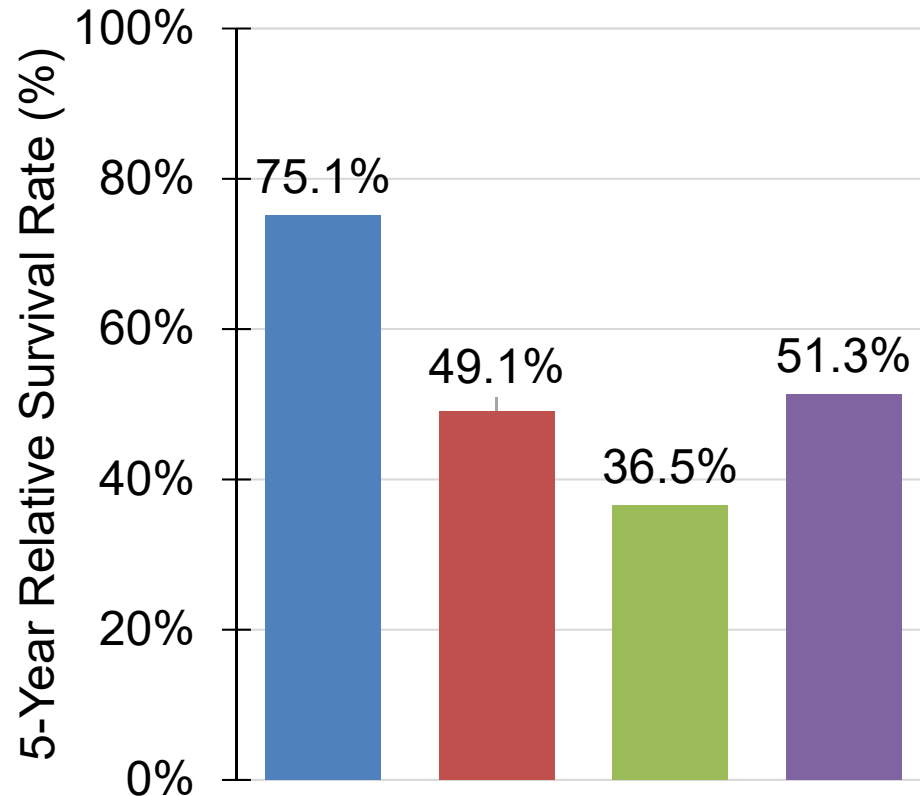


■ Localized ■ Regional ■ Distant ■ Unstaged

#Only invasive cases.

¹ The stage distribution is based on Summary Stage 2000.

Oral Cavity and Pharynx Cancer#: Louisiana 5-Year Relative Survival by Stage¹, White Females, 2007-2013

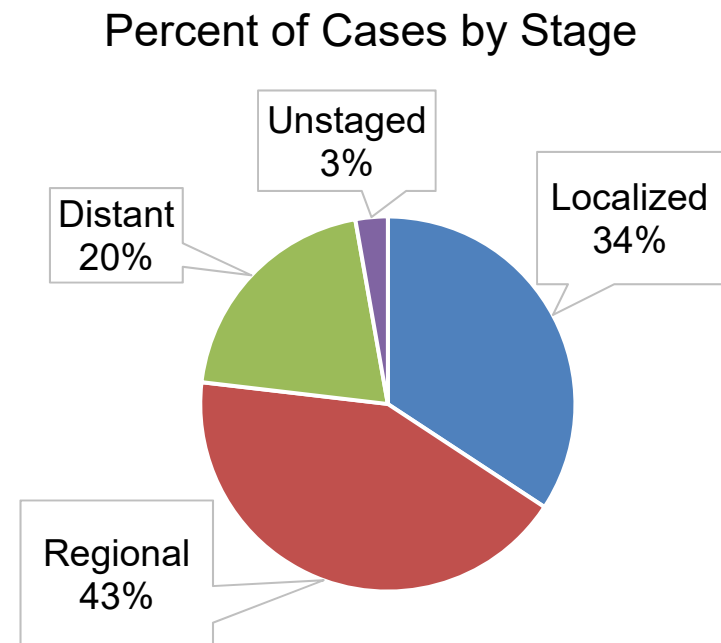
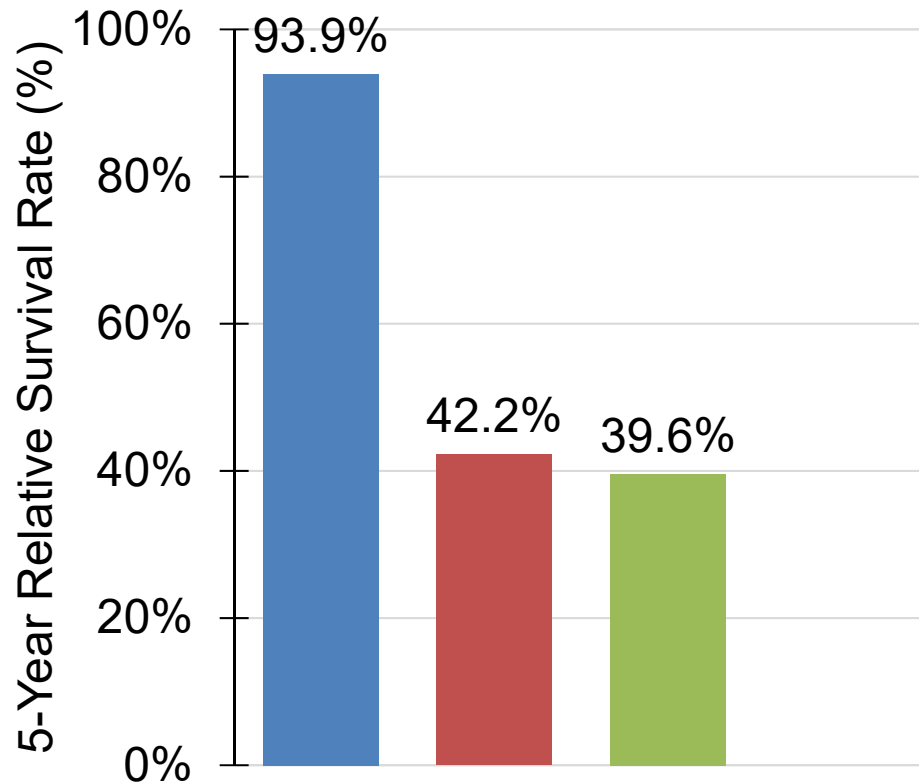


■ Localized ■ Regional ■ Distant ■ Unstaged

#Only invasive cases.

¹ The stage distribution is based on Summary Stage 2000.

Oral Cavity and Pharynx Cancer#: Louisiana 5-Year Relative Survival by Stage^{1,2}, Black Females, 2007-2013



■ Localized ■ Regional ■ Distant ■ Unstaged

#Only invasive cases.

¹ The stage distribution is based on Summary Stage 2000.

² The survival rate of unstaged cases could not be calculated due to small case counts.

Appendix A. Regions of the Louisiana Tumor Registry

Regional Registry	Beginning Date of the Registry	Average Annual Population, 2010-2014	Parishes Covered
Region 1 – New Orleans	1974	21,864	Jefferson, Orleans, St. Bernard
Region 2 – Baton Rouge	1983	23,410	Ascension, Assumption, East Baton Rouge, East Feliciana, Iberville, Livingston, Pointe Coupée, St. Helena, Tangipahoa, West Baton Rouge, West Feliciana
Region 3 – Southeast Louisiana	1983	17,036	Lafourche, Plaquemines, St. Charles, St. James, St. John, St. Tammany, Terrebonne, Washington
Region 4 – Acadiana	1983	17,032	Acadia, Evangeline, Iberia, Lafayette, St. Landry, St. Martin, St. Mary, Vermilion
Region 5 – Southwest Louisiana	1983	7,698	Allen, Beauregard, Calcasieu, Cameron, Jefferson Davis
Region 6 – Central Louisiana	1988	8,283	Avoyelles, Catahoula, Concordia, Grant, La Salle, Rapides, Vernon, Winn
Region 7 – Northwest Louisiana	1988	14,817	Bienville, Bossier, Caddo, Claiborne, De Soto, Natchitoches, Red River, Sabine, Webster
Region 8 – Northeast Louisiana	1988	9,061	Caldwell, East Carroll, Franklin, Jackson, Lincoln, Madison, Morehouse, Ouachita, Richland, Tensas, Union, West Carroll
Entire State	1988	119,201	

Source: U.S. Bureau of Census and National Cancer Institute, April 2017.

Data Sources

Surveillance, Epidemiology, and End Results (SEER) Program (www.seer.cancer.gov) SEER*Stat Databases, National Cancer Institute, DCCPS, Surveillance Research Program, Surveillance Systems Branch, released April 2017, based on the November 2016 submission.

For Incidence:

- Incidence - SEER 18 Regs Research Data + Hurricane Katrina Impacted Louisiana Cases, Nov 2016 Sub (2000-2014) <Katrina/Rita Population Adjustment>

For Mortality:

- mortality – All COD, Aggregated With State, Total U.S. (1969-2014) <Katrina/Rita Population Adjustment>>

For Survival:

- Incidence - SEER 18 Regs Research Data + Hurricane Katrina Impacted Louisiana Cases, Nov 2015 Sub (1973-2013 varying)

Data Sources

- USCS:
 - U.S. Cancer Statistics Working Group. United States Cancer Statistics: 1999-2014 Incidence and Mortality Web-based Report. Atlanta: U.S. Department of Health and Human Services, Centers for Disease Control and Prevention and National Cancer Institute; 2017. Available at: www.cdc.gov/uscs.
- Cancer Facts & Figures:
 - American Cancer Society. *Cancer Facts & Figures 2017*. Atlanta: American Cancer Society; 2017.

Data Sources

NCI State profiles

- Incidence Data Sources:
 - Incidence data are provided by the National Program of Cancer Registries External Web Site Policy Cancer Surveillance System (NPCR-CSS), Centers for Disease Control and Prevention and by the National Cancer Institute's Surveillance, Epidemiology, and End Results (SEER) Program External Web Site Policy.
 - Population counts for denominators are based on Census populations as modified by NCI.
 - Rates are calculated using SEER*Stat External Web Site Policy.
- Mortality Data Sources:
 - Mortality data are provided by the National Vital Statistics System External Web Site Policy at the National Center for Health Statistics of the Centers for Disease Control and Prevention.
 - Population counts for denominators are based on Census populations as modified by NCI..
 - Rates are calculated using SEER*Stat External Web Site Policy.
 - Trends are determined by using Joinpoint External Web Site Policy analysis of available historical data and reporting the last segment as the most recent trend.

Acknowledgements

- **Hospital cancer registries** (<http://louisianatumorregistry.lsuhs.edu/>)
- **Louisiana Cancer Registrars' Association** (<http://www.lcra-usa.org/>)
- **Physicians and staff members in:**
 - Medical records offices
 - Pathology laboratories
 - Physician offices and clinics
 - Hospice programs and nursing homes
- **Regional and central offices of the Louisiana Tumor Registry**
(<http://louisianatumorregistry.lsuhs.edu/regionalregistries.html>)
- **School of Public Health, LSU Health Sciences Center–New Orleans**
- **Louisiana Cancer and Lung Trust Fund Board**
- **Coroners' offices**

Sources of LTR Funding

- National Cancer Institute, SEER Program
- Centers for Disease Control and Prevention (CDC), National Program of Cancer Registries (NPCR)
- Louisiana Health Care Services Division

Editors

Lu Zhang, PhD, MPH

Lauren Maniscalco, MPH

Meichin Hsieh, PhD, MSPH, CTR

Xiaocheng Wu, MD, MPH, CTR

Contributors

Xiangrong Li, MD, MSPH

Brent Mumphrey, BS

Tina Lefante, MPH

Lisa Pareti, BS, RHIT, CTR

Yong Yi, PhD, MS

Questions?

Contact:

LTR-info@lsuhsc.edu

or

504/568-5757