

# **Louisiana Cancer Facts & Figures, Kidney and Renal Pelvis Cancer**

Louisiana Tumor Registry

December 5, 2016

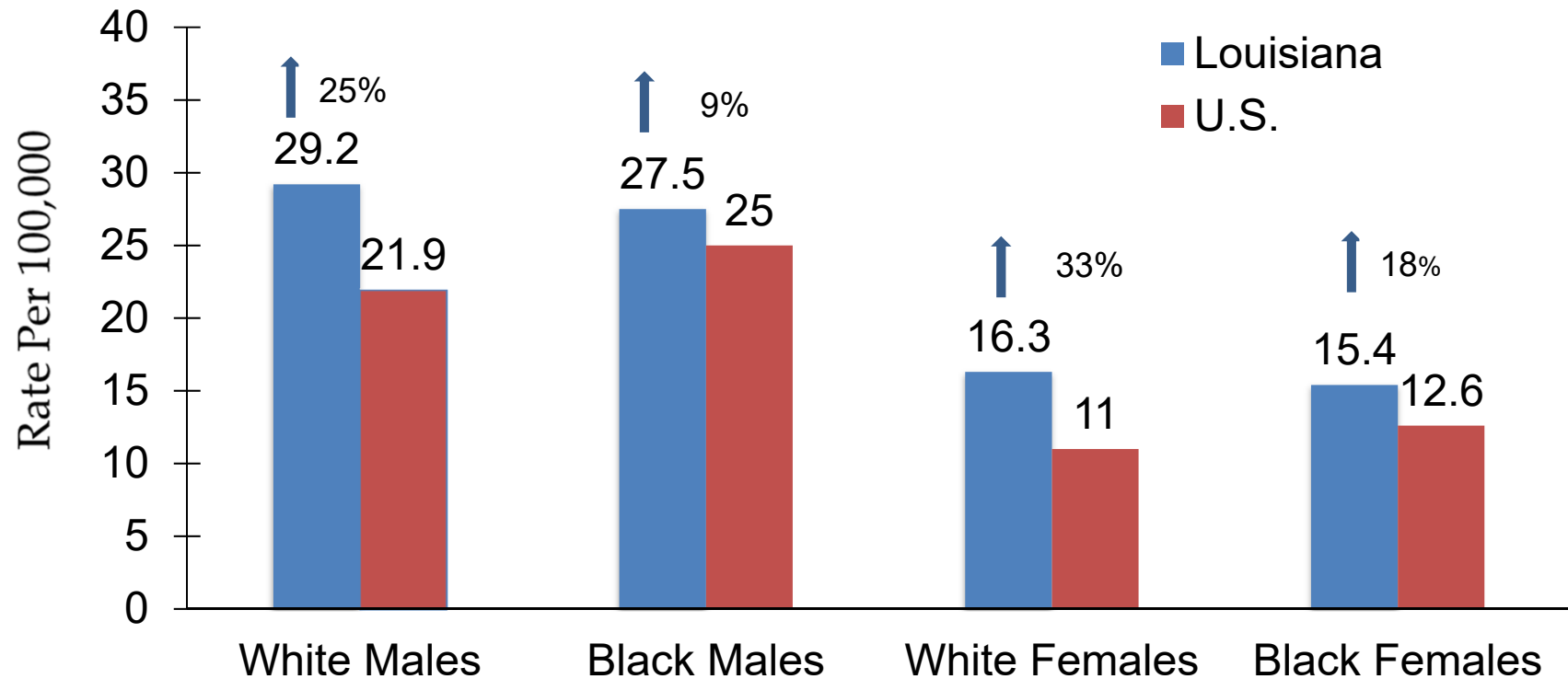
# Kidney and Renal Pelvis Cancer

- From 2010 to 2014, Louisiana had the highest incidence rate for kidney and renal pelvis cancer, and the 2<sup>nd</sup> highest mortality rate of any state in the nation (all races and sexes combined).<sup>1</sup>
- About 1,090 new kidney and renal pelvis cancers are expected to be diagnosed and about 260 people are expected to die of kidney and renal pelvis cancers in Louisiana in 2017.<sup>2</sup>

<sup>1</sup>Data source: [United States Cancer Statistics](#)

<sup>2</sup>Data source: [American Cancer Society, Cancer Facts & Figures 2017](#)

# Kidney and Renal Pelvis Cancer: Incidence Rates<sup>#,1,2</sup>, 2010-2014



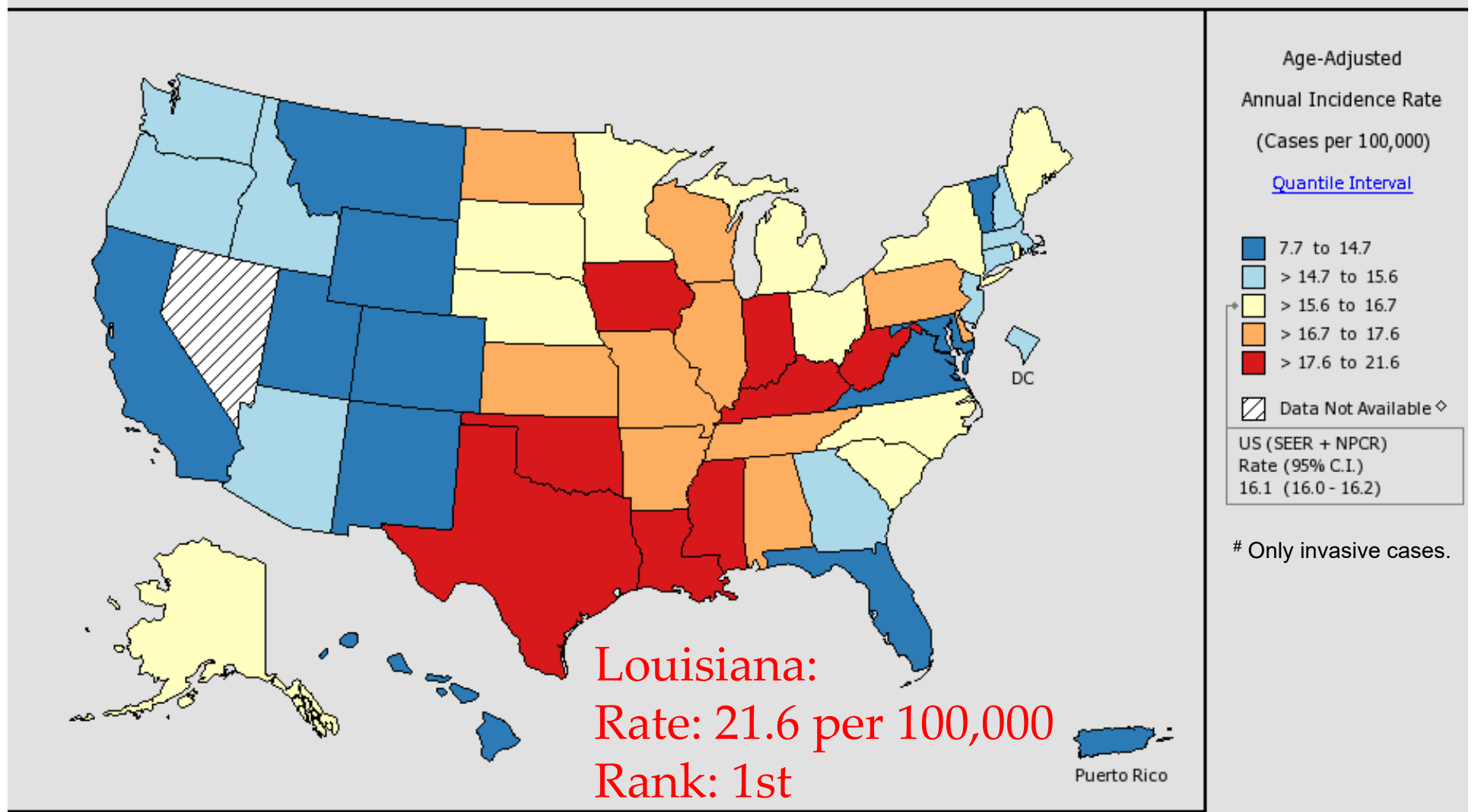
# Only invasive cases.

<sup>1</sup> Age-adjusted to the 2000 U.S. standard population.

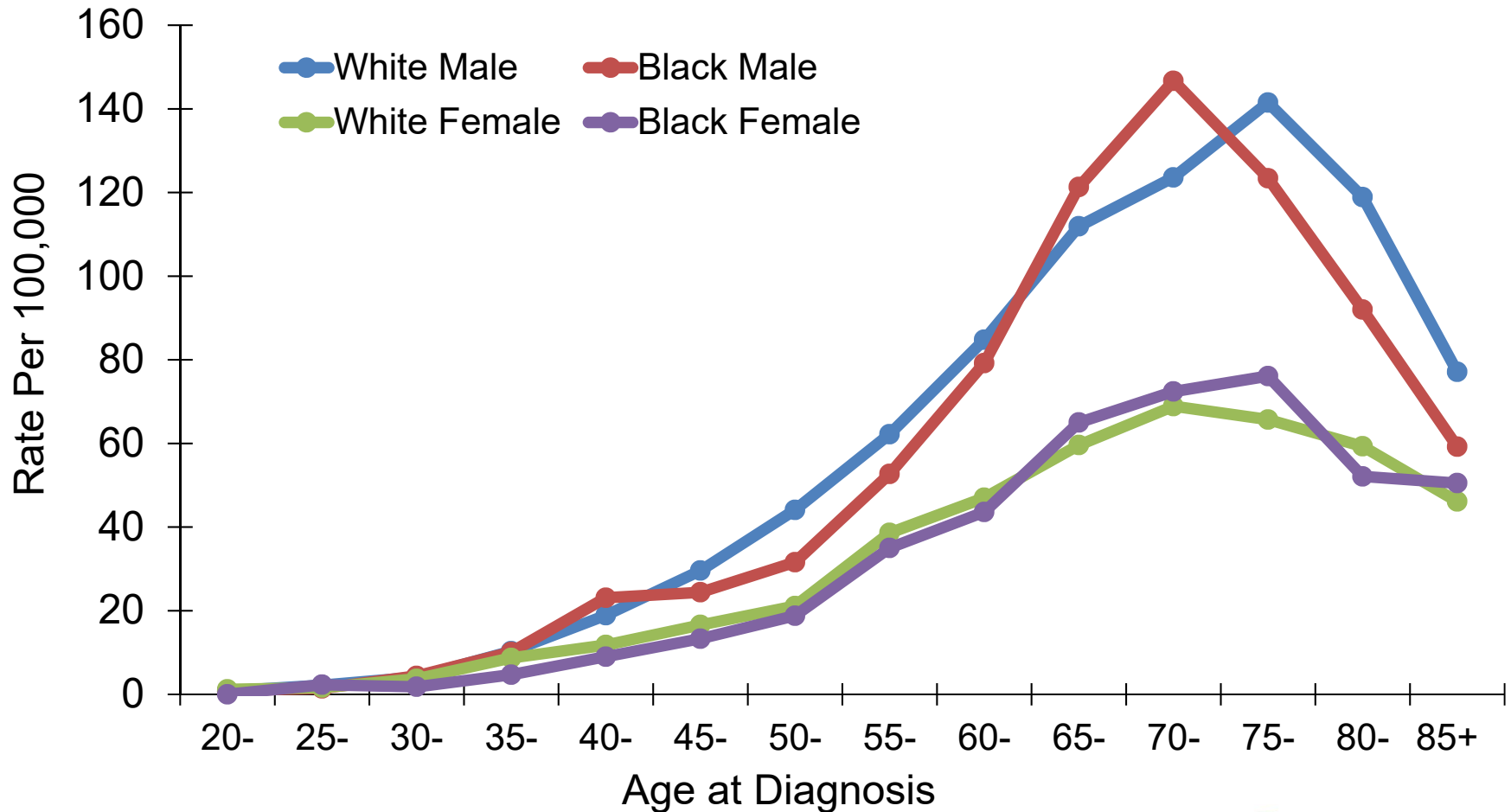
<sup>2</sup> Incidence data source: 18 SEER registries.

↓↑ Rate of Louisiana is significantly different from that of the U.S.

# Incidence Rates # of Kidney and Renal Pelvis Cancer in the U.S., All Races, Both Sexes, 2010-2014

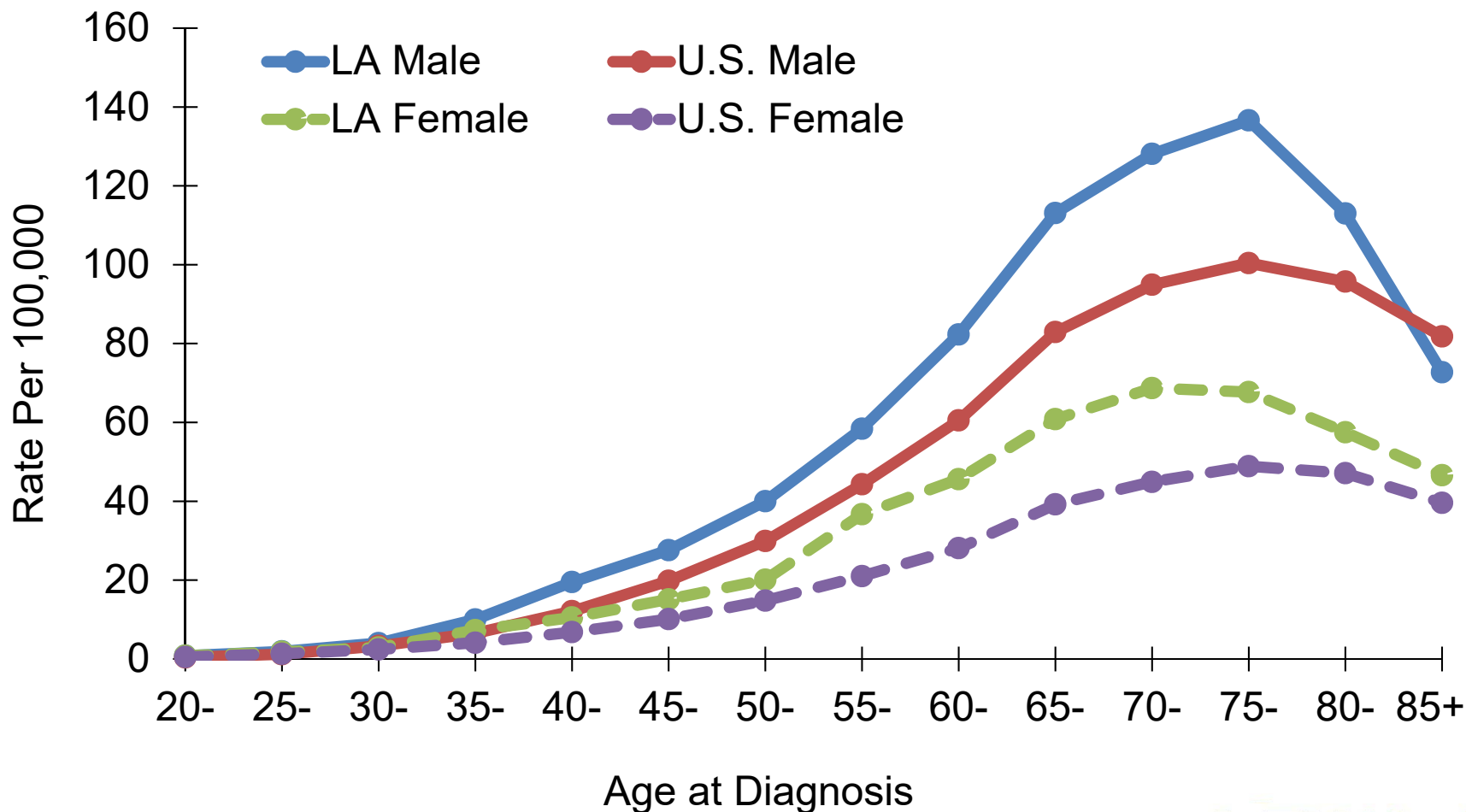


# Kidney and Renal Pelvis Cancer: Age-Specific Incidence Rates<sup>#</sup> in Louisiana by Race and Gender, 2010-2014



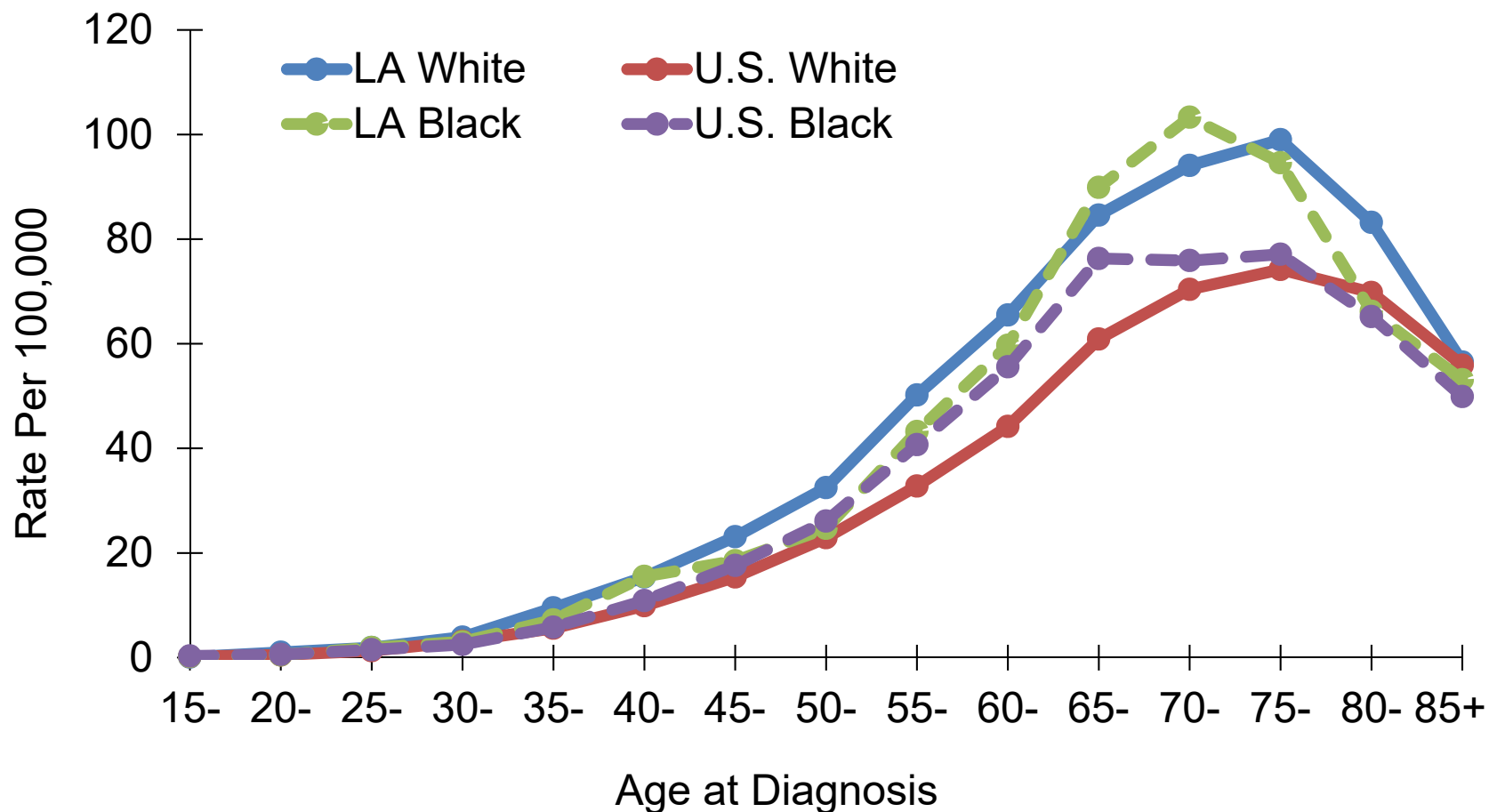
<sup>#</sup>Invasive cases only.

# Kidney and Renal Pelvis Cancer: Age-Specific Incidence Rates # by Gender, 2010-2014



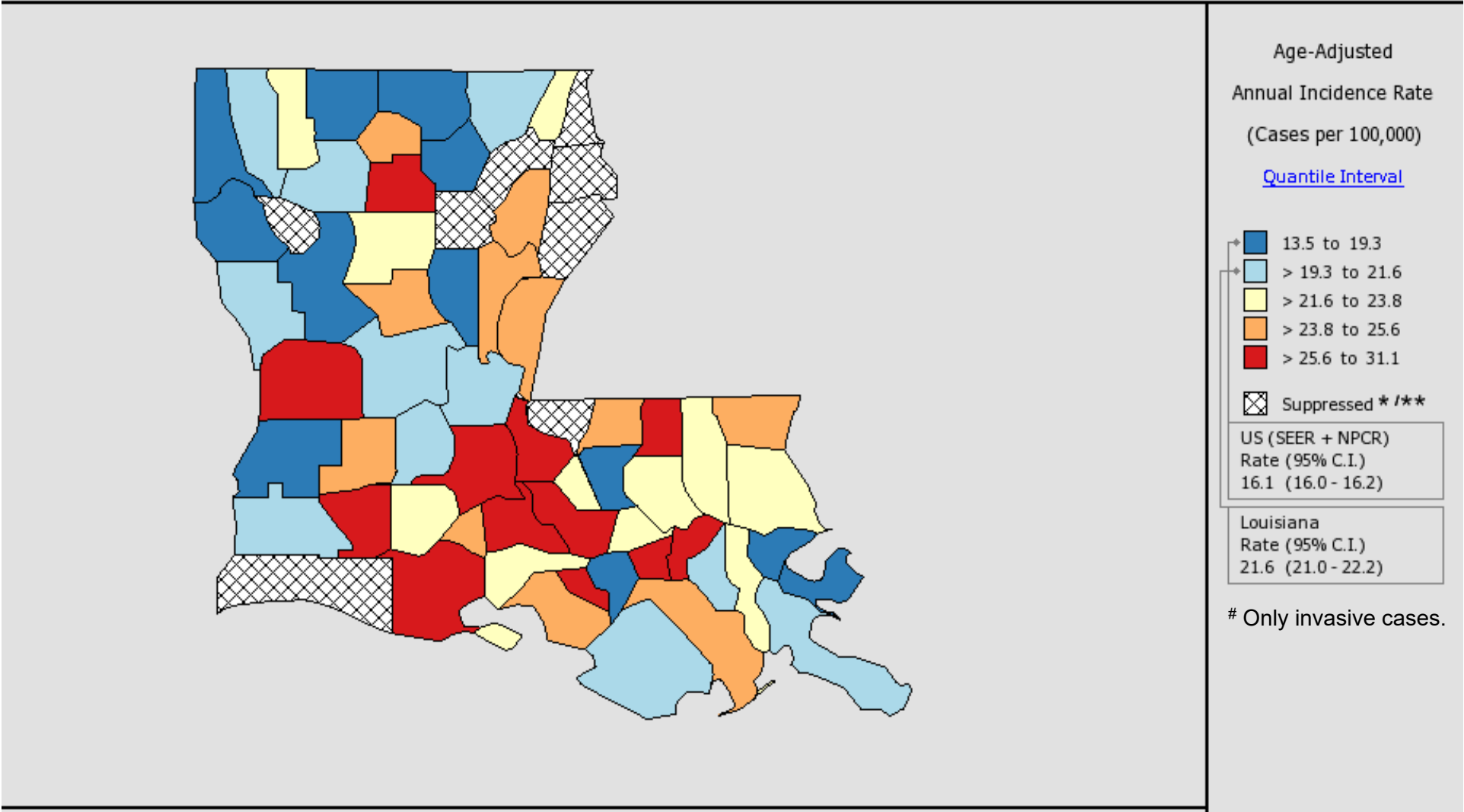
# Only invasive cases.  
 U.S. data source: 18 SEER registries.

# Kidney and Renal Pelvis Cancer: Age-Specific Incidence Rates # by Race, 2010-2014



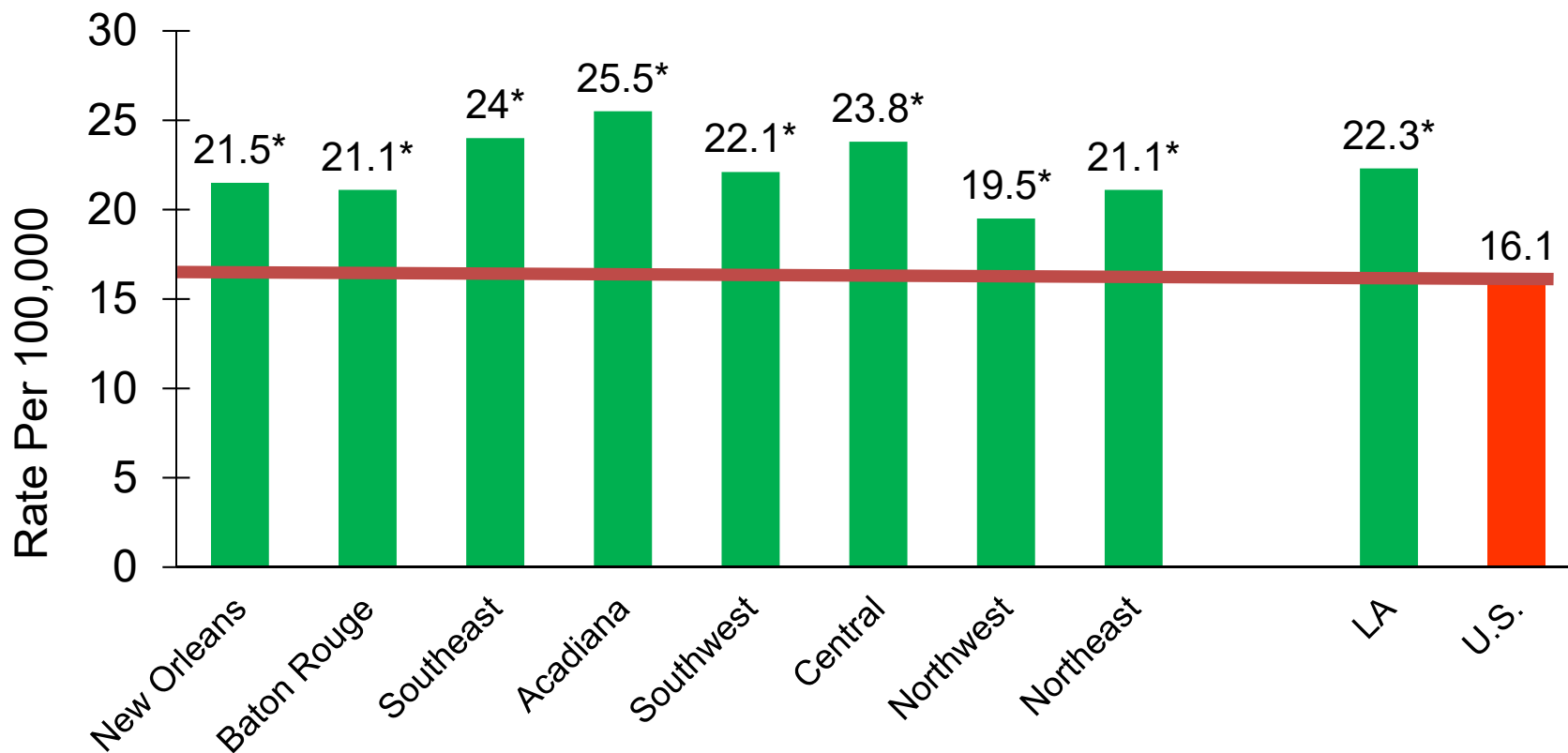
# Only invasive cases.  
 U.S. data source: 18 SEER registries.

# Incidence Rates # of Kidney and Renal Pelvis Cancer in the Louisiana, All Races, Both Sexes, 2010-2014





# Kidney and Renal Pelvis Cancer Incidence<sup>#,1,2</sup> by Region<sup>3</sup>: Louisiana, Whites, 2010-2014



# Only invasive cases.

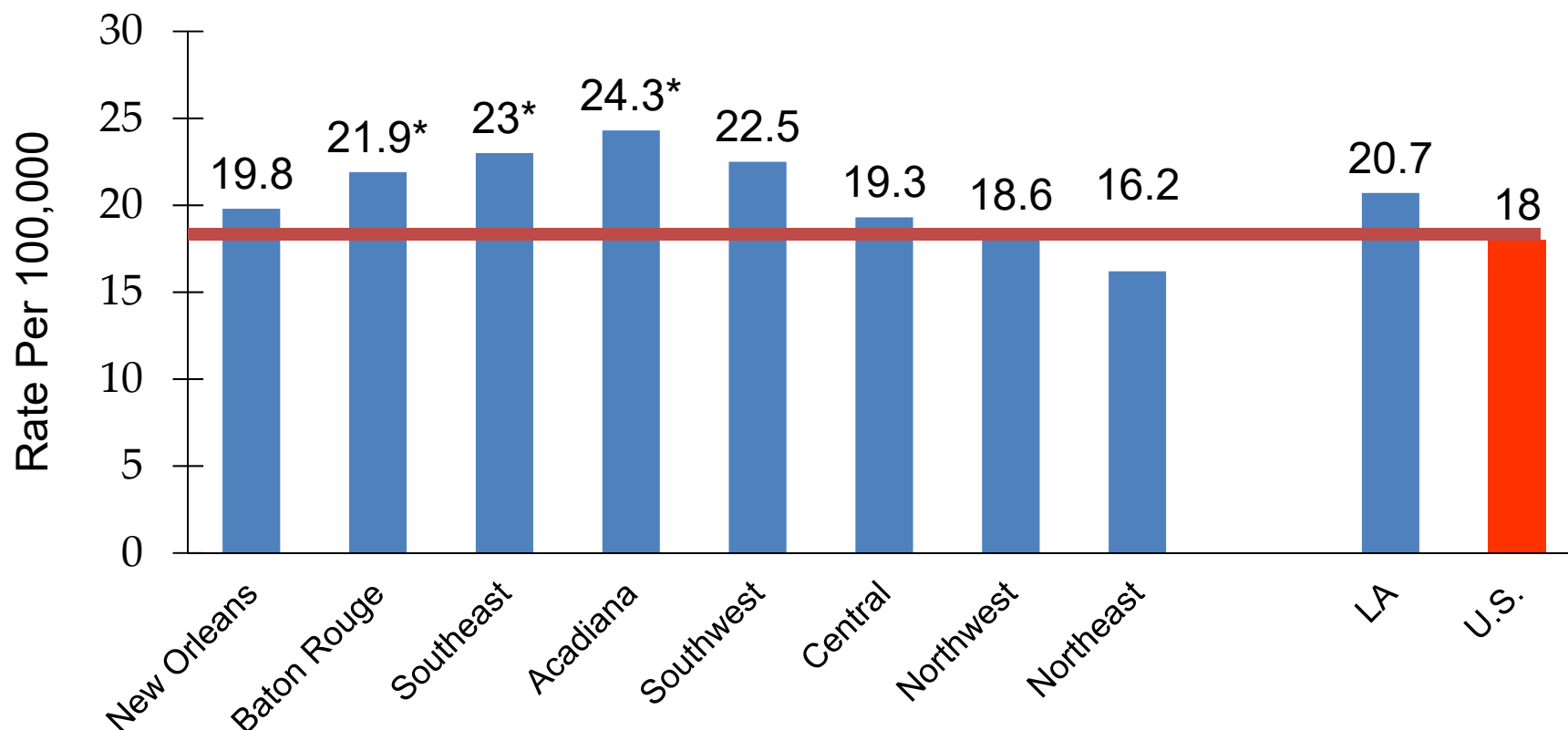
<sup>1</sup> Age-adjusted to the 2000 U.S. standard population.

<sup>2</sup> Data source for U.S. was the 18 SEER registries.

<sup>3</sup> [LTR Regions](#)

\* Incidence rate of regions/Louisiana is significantly different from that of the U.S.

# Kidney and Renal Pelvis Cancer Incidence<sup>#,1,2</sup> by Region<sup>3</sup>: Louisiana, Blacks, 2010-2014



# Only invasive cases.

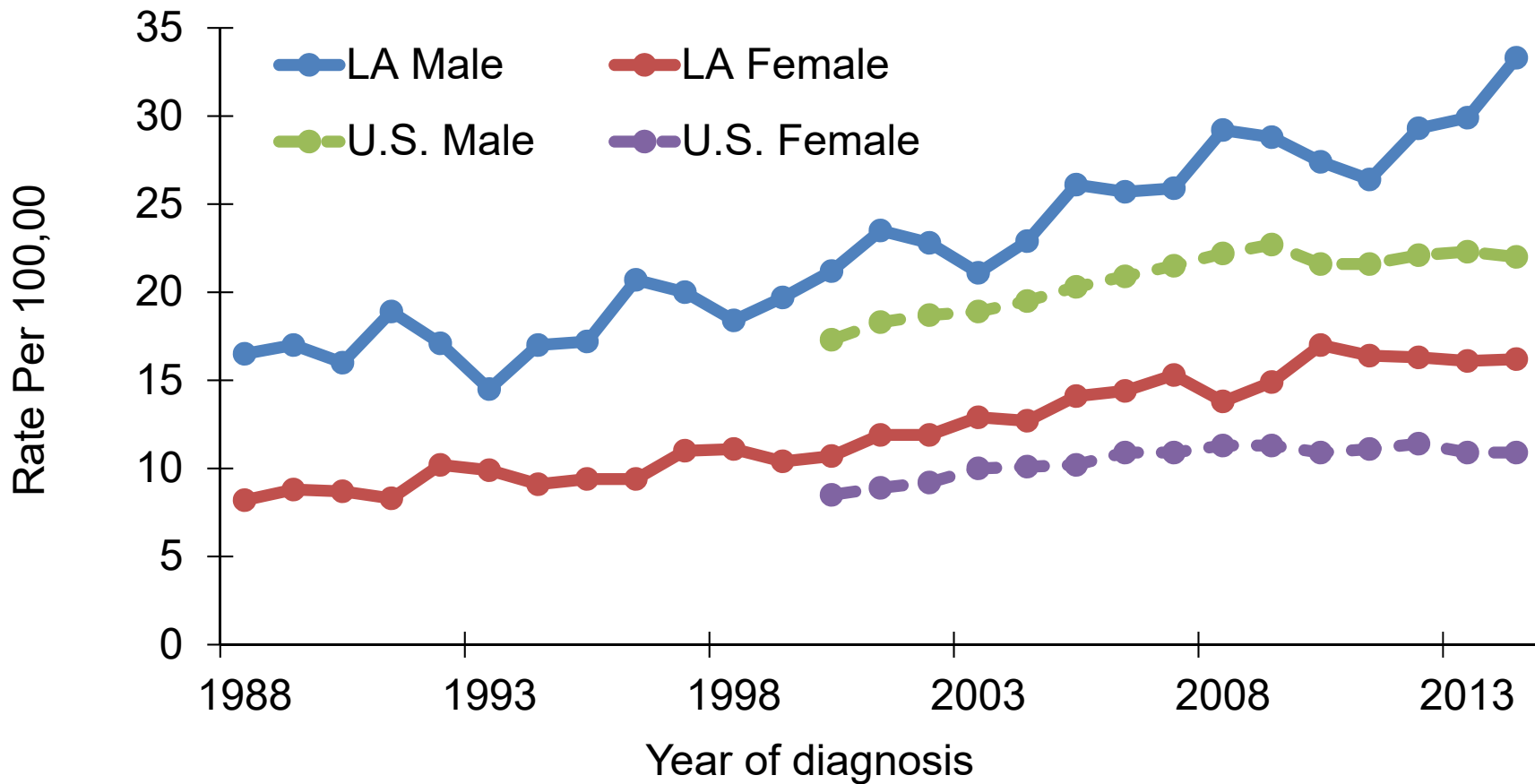
<sup>1</sup> Age-adjusted to the 2000 U.S. standard population.

<sup>2</sup> Data source for U.S. was the 18 SEER registries.

<sup>3</sup> [LTR Regions](#)

\* Incidence rate of regions/Louisiana is significantly different from that of the U.S.

# Kidney and Renal Pelvis Cancer: Trends of Incidence Rates<sup>#,1,2</sup>, Whites, 1988-2014

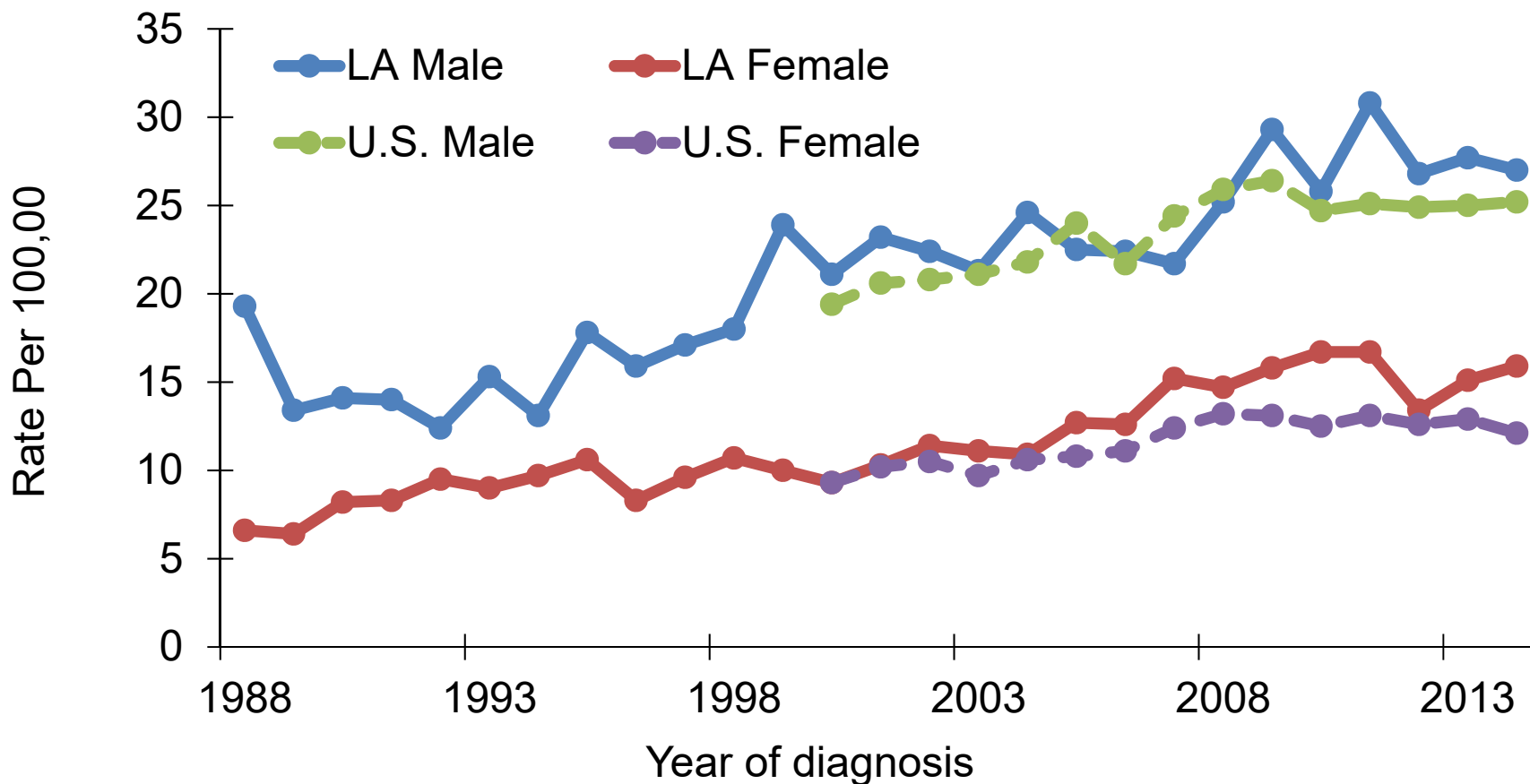


# Only invasive cases.

<sup>1</sup> Age-adjusted to the 2000 U.S. standard population.

<sup>2</sup> U.S. data source: 18 SEER registries.

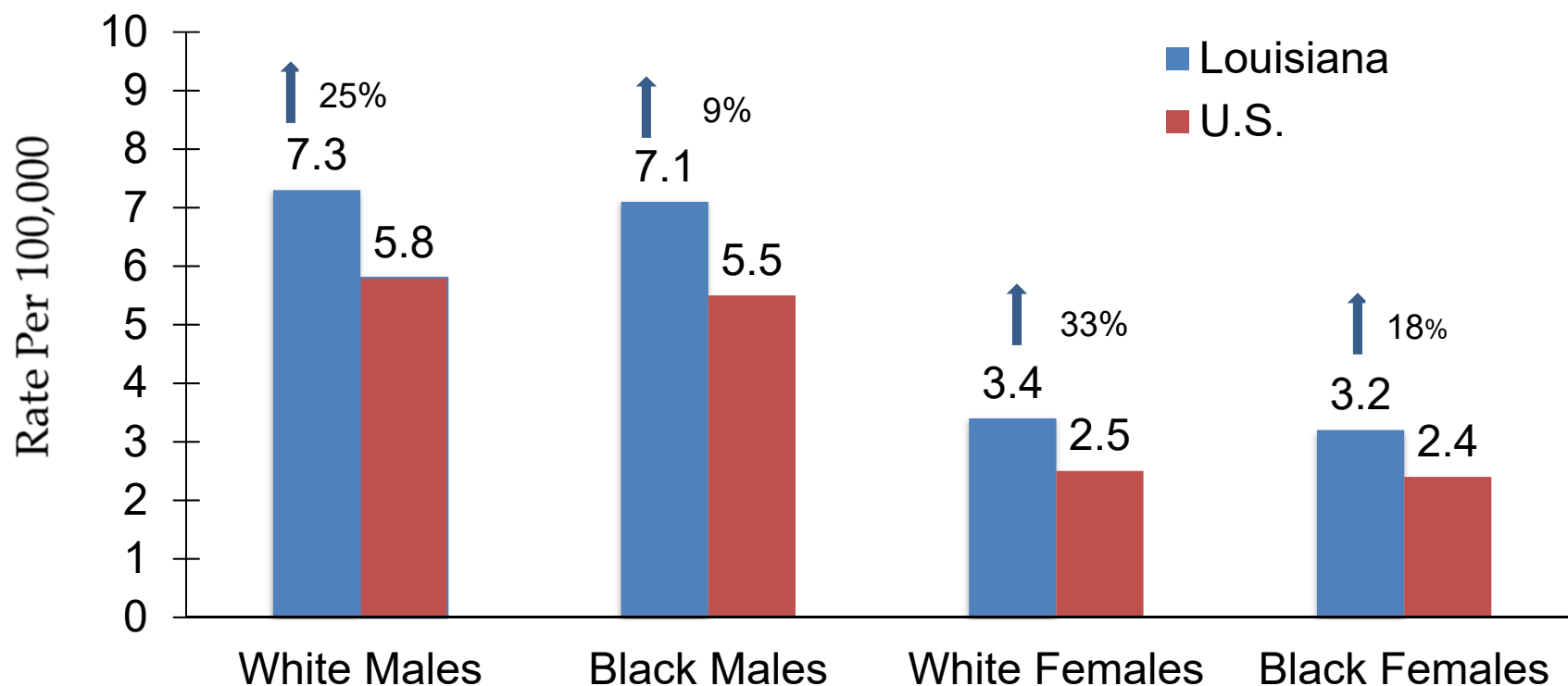
# Kidney and Renal Pelvis Cancer: Trends of Incidence Rates<sup>#,1,2</sup>, Blacks, 1988-2014



<sup>1</sup> Age-adjusted to the 2000 U.S. standard population.

<sup>2</sup> U.S. data source: 18 SEER registries.

# Kidney and Renal Pelvis Cancer Mortality Rates Louisiana vs. US<sup>2</sup>, 2010-2014

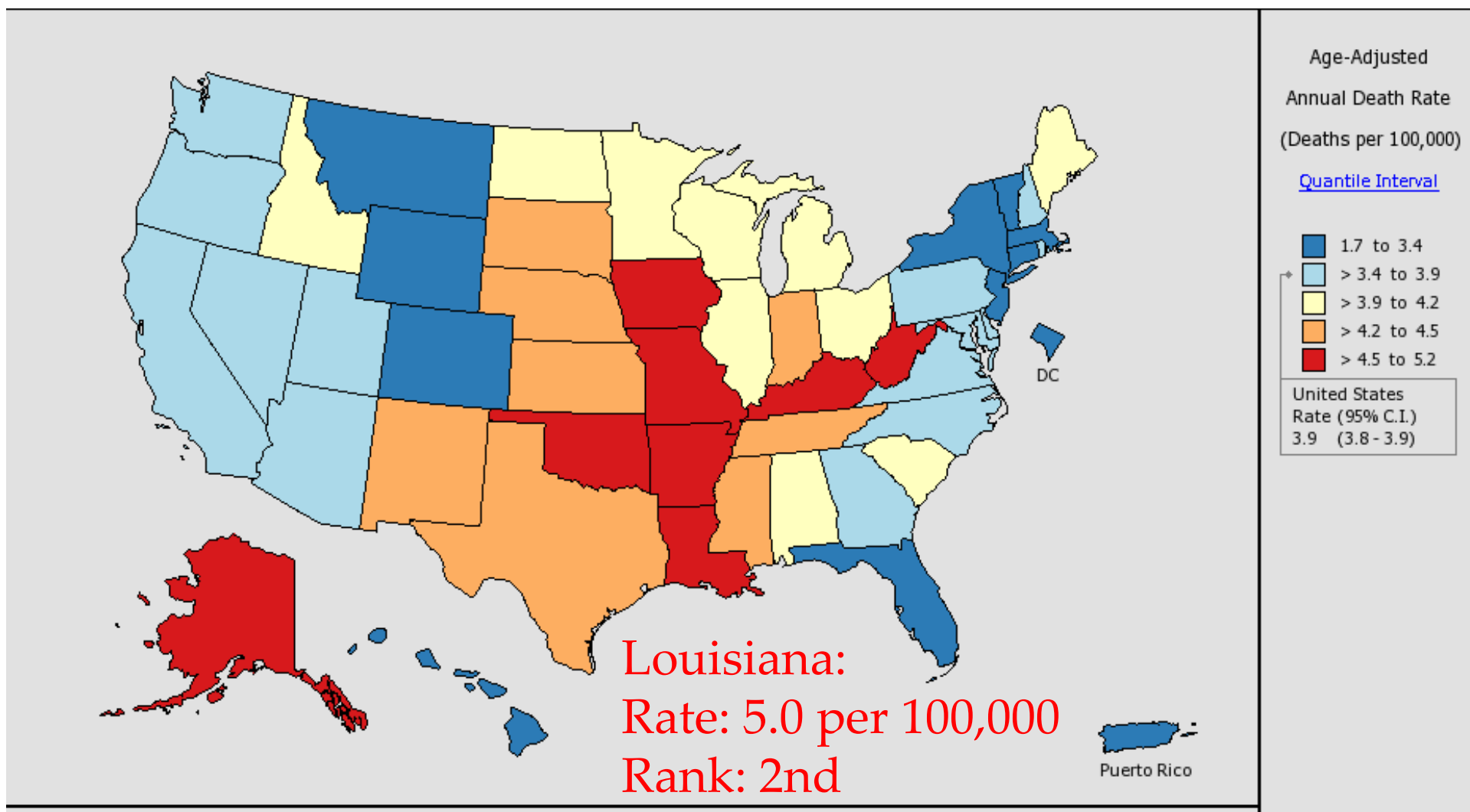


<sup>1</sup> Age-adjusted to the 2000 U.S. standard population.

<sup>2</sup> Data source: National Center of Health Statistics (NCHS).

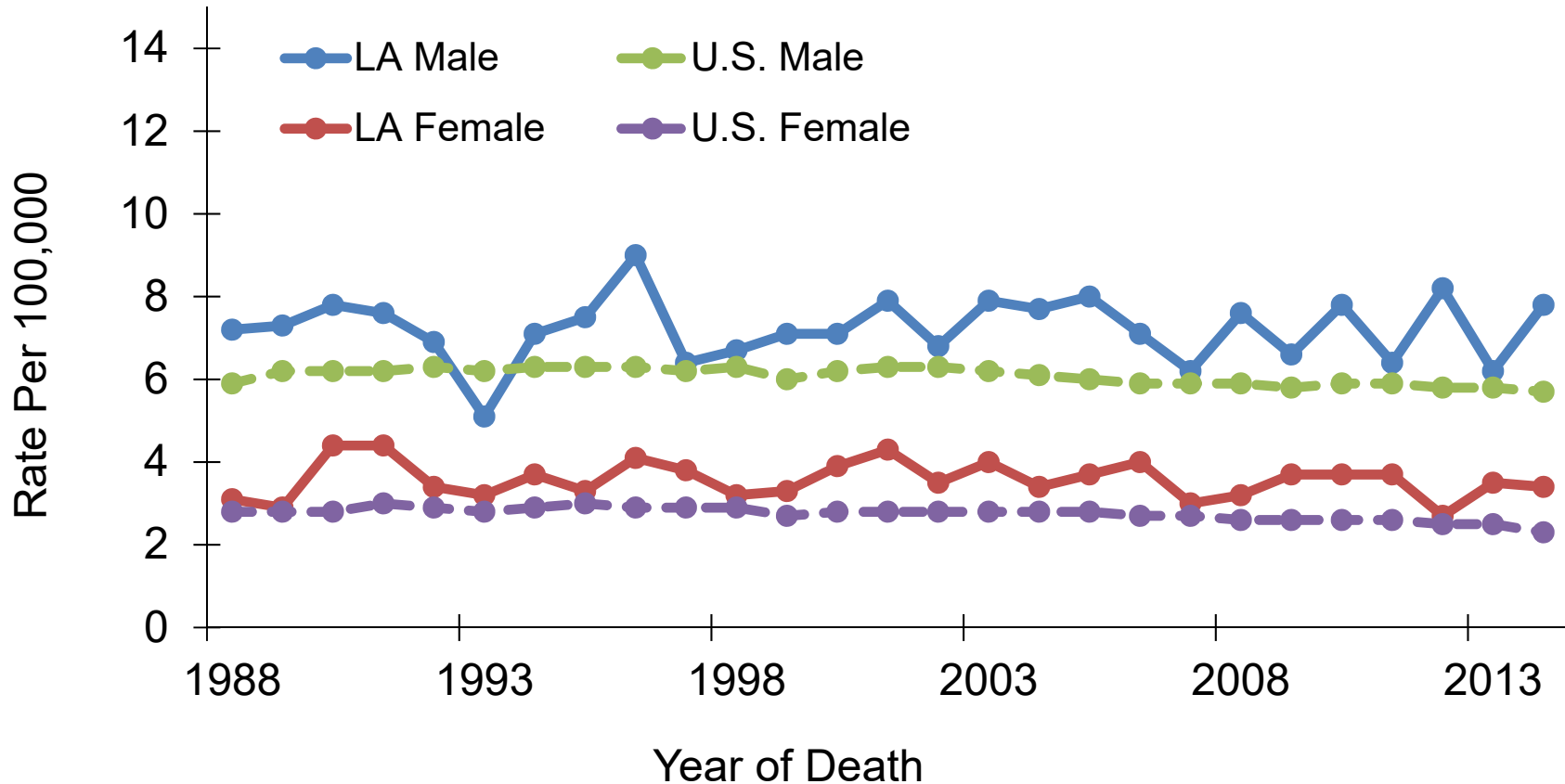
↑↓Rate of Louisiana is significantly different from that of the U.S.

# Mortality Rates of Kidney and Renal Pelvis Cancer in the U.S., All Races, Both Sexes, 2010-2014





# Kidney and Renal Pelvis Cancer: Trends of Mortality Rates<sup>1,2</sup>, Whites, 1988-2014

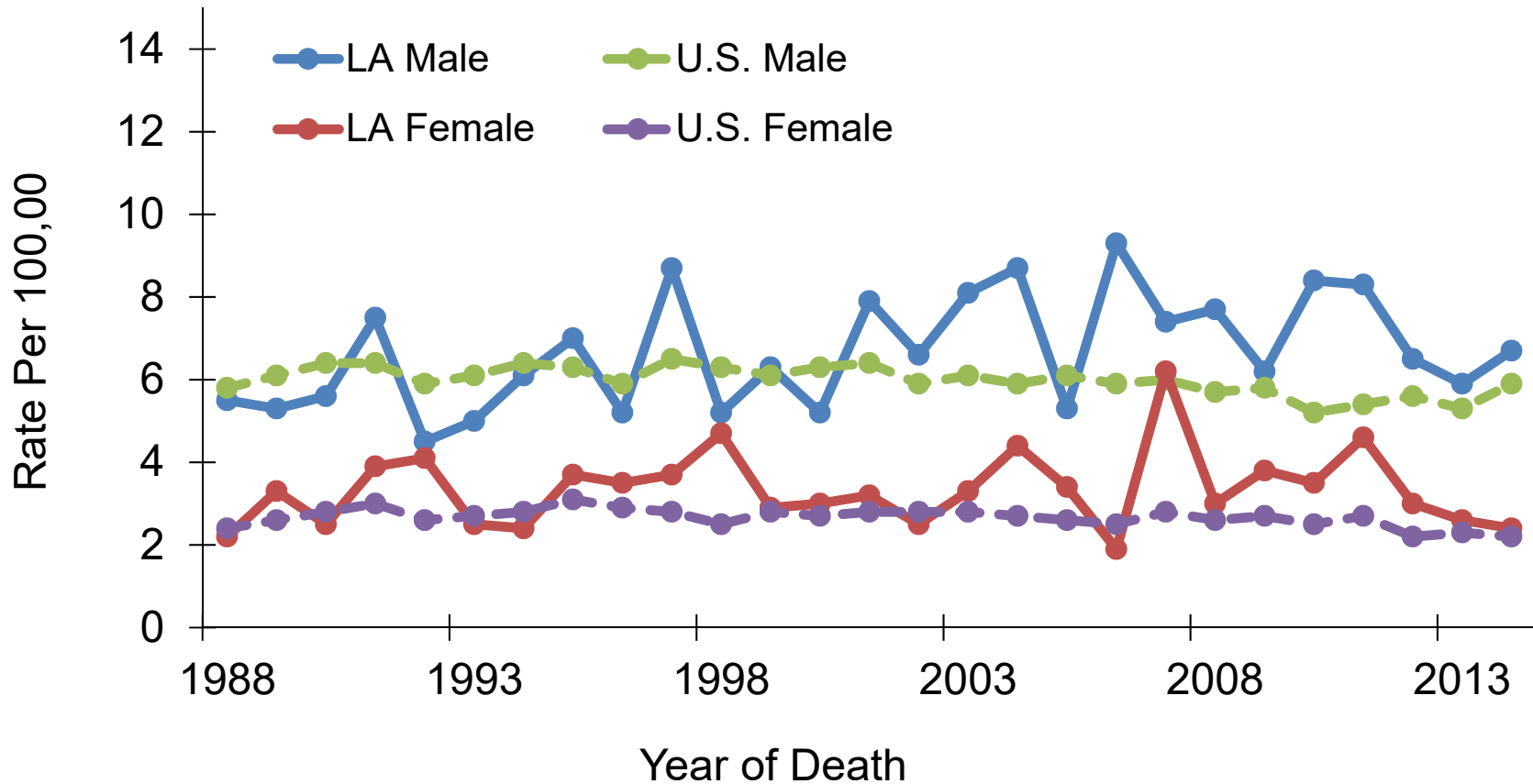


<sup>1</sup> Age-adjusted to the 2000 U.S. standard population.

<sup>2</sup> Data source: National Center of Health Statistics (NCHS).



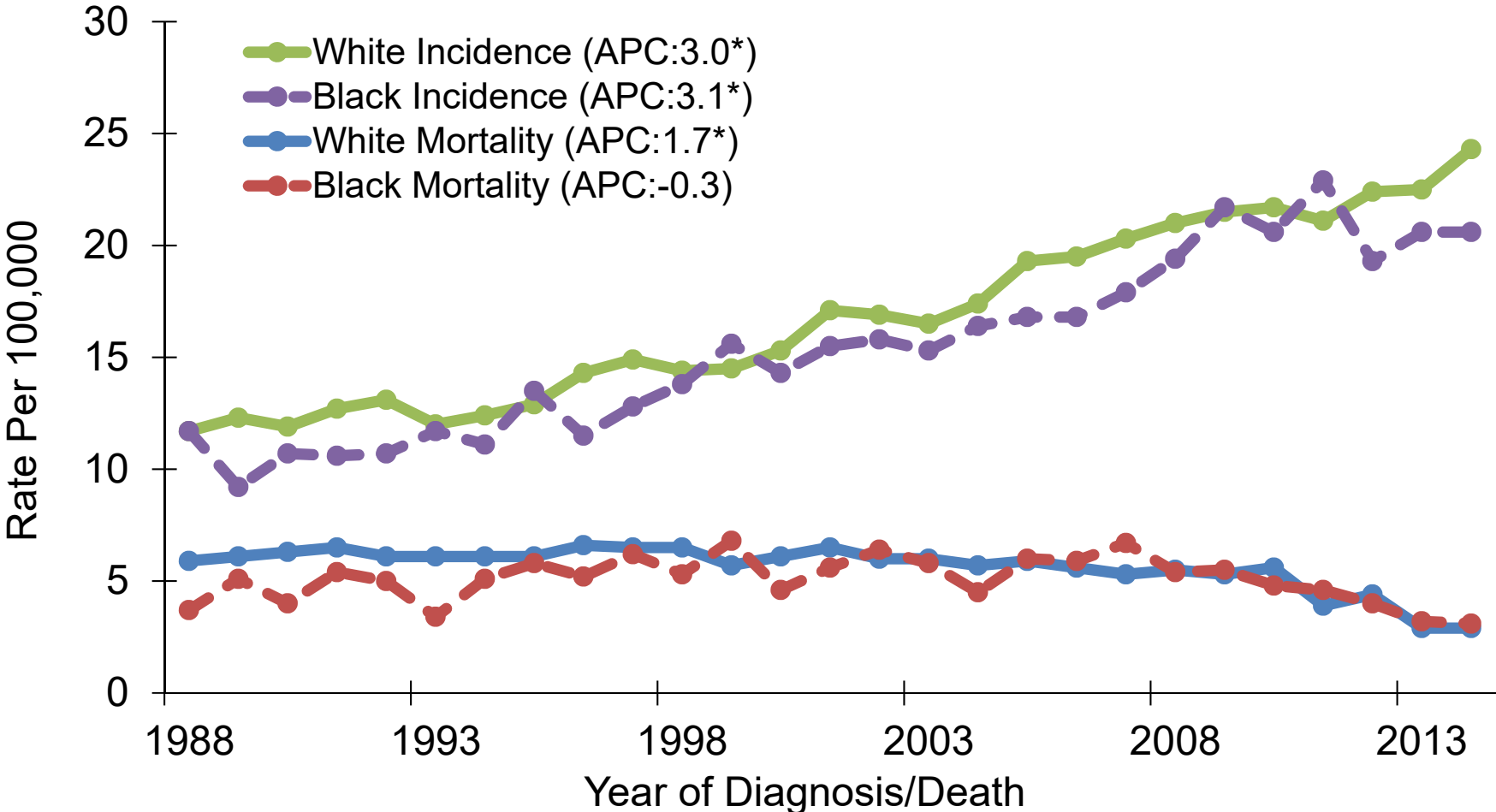
# Kidney and Renal Pelvis Cancer: Trends of Mortality Rates<sup>1,2</sup>, Blacks, 1988-2014



<sup>1</sup> Age-adjusted to the 2000 U.S. standard population.

<sup>2</sup> Data source: National Center of Health Statistics (NCHS).

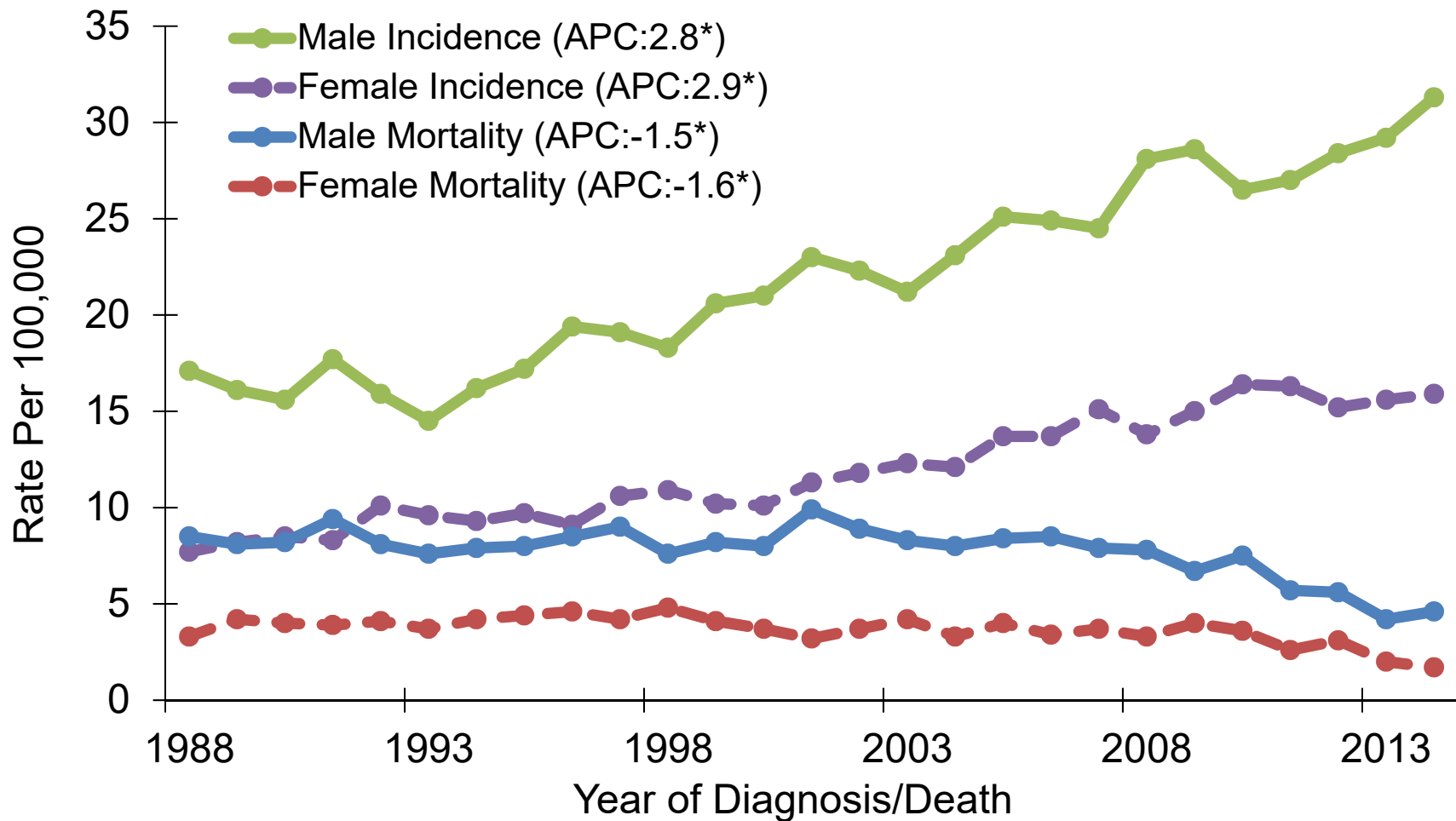
# Kidney and Renal Pelvis Cancer: Trends of Incidence# and Mortality Rates, by Race, Louisiana, 1988-2014



#Invasive cases only.

\*Annual average percent change (APC) were calculated using weighted least squares method

# Kidney and Renal Pelvis Cancer: Trends of Incidence<sup>#</sup> and Mortality Rates, by Gender, Louisiana, 1988-2014

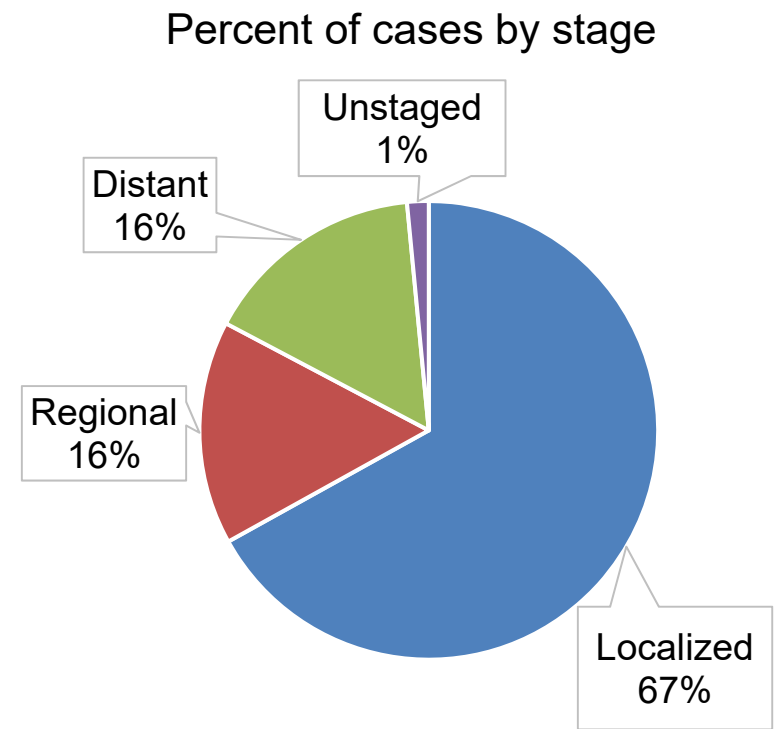
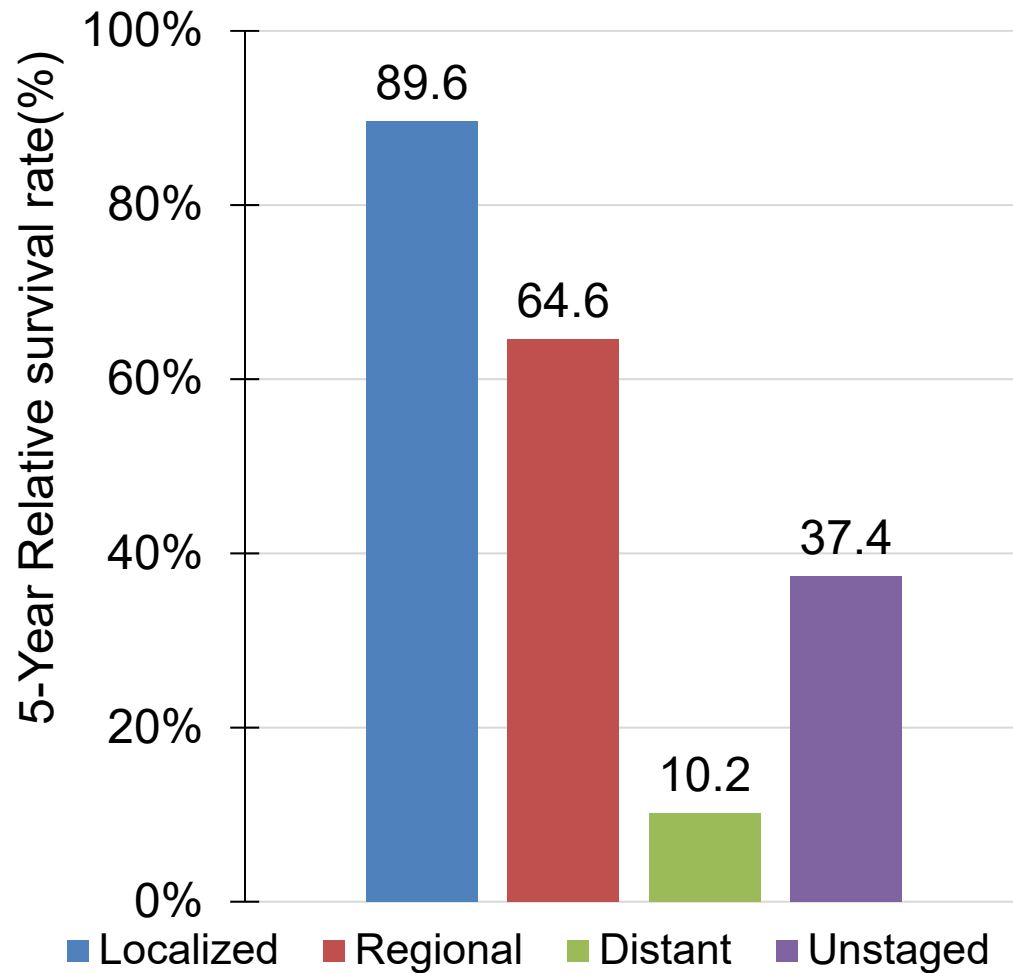


<sup>#</sup>Invasive cases only.

\*Annual average percent change (APC) were calculated using weighted least squares method

# Kidney and Renal Pelvis Cancer#: Louisiana

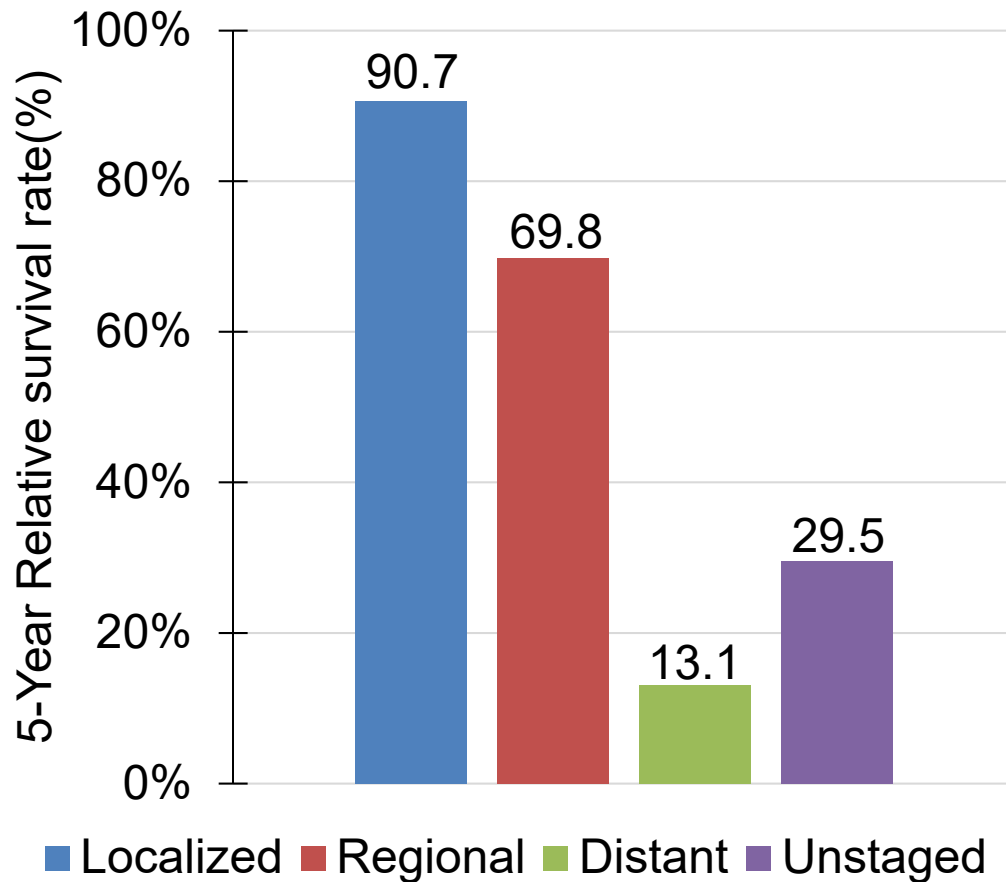
## 5-Year Relative Survival by Stage<sup>1</sup>, Both Sexes, All Races, 2007-2013



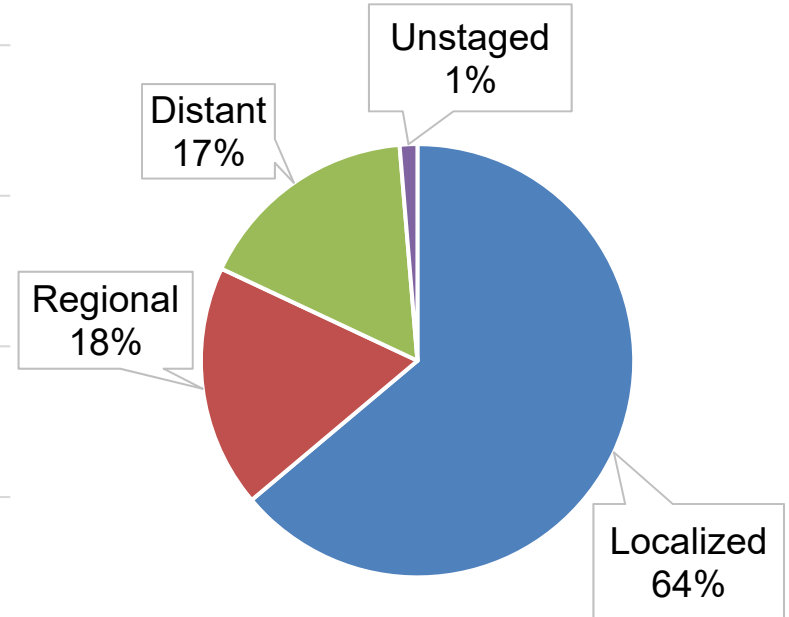
#Only invasive cases.

<sup>1</sup> The stage distribution is based on Summary Stage 2000.

# Kidney and Renal Pelvis Cancer#: Louisiana 5-Year Relative Survival by Stage<sup>1</sup>, White Males, 2007-2013



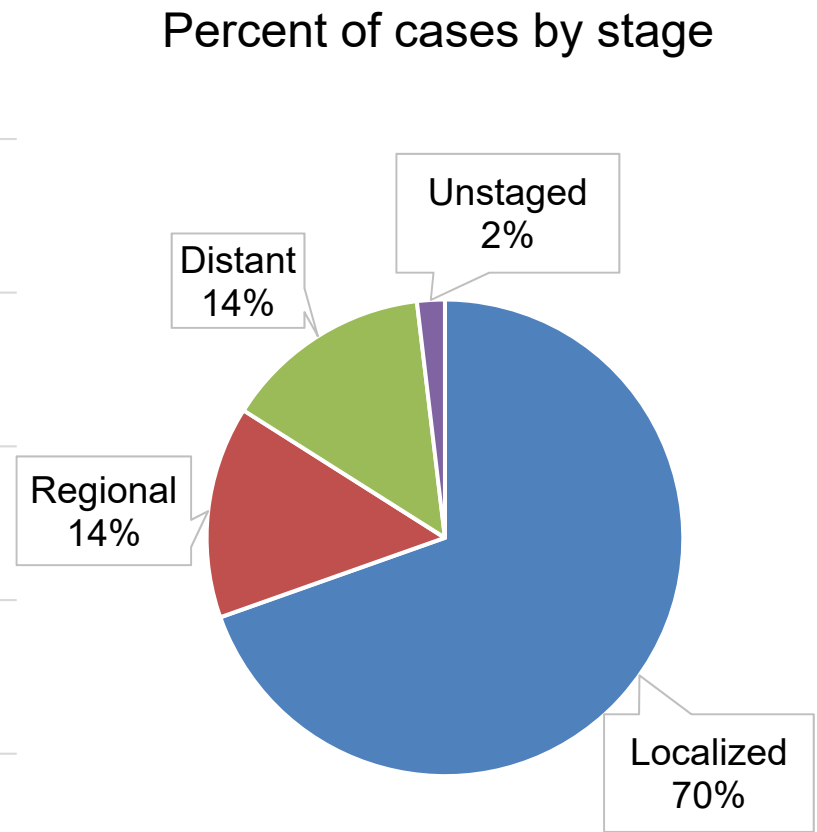
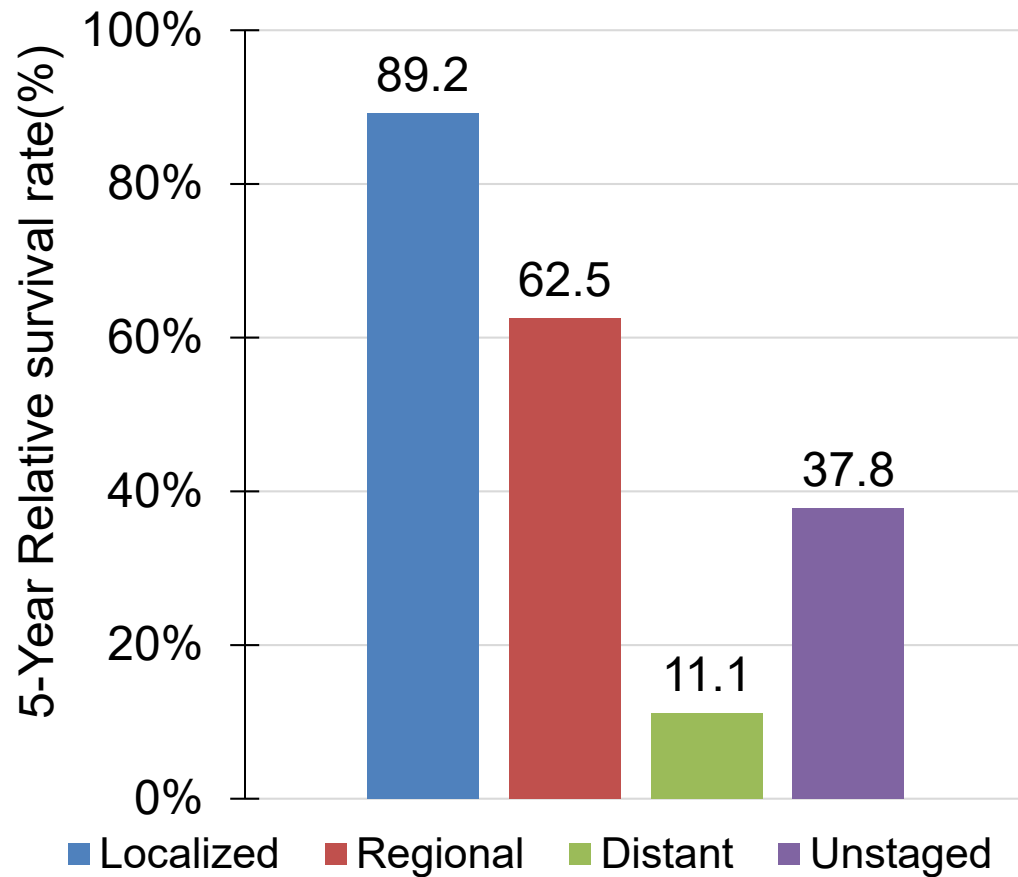
Percent of cases by stage



#Only invasive cases.

<sup>1</sup> The stage distribution is based on Summary Stage 2000.

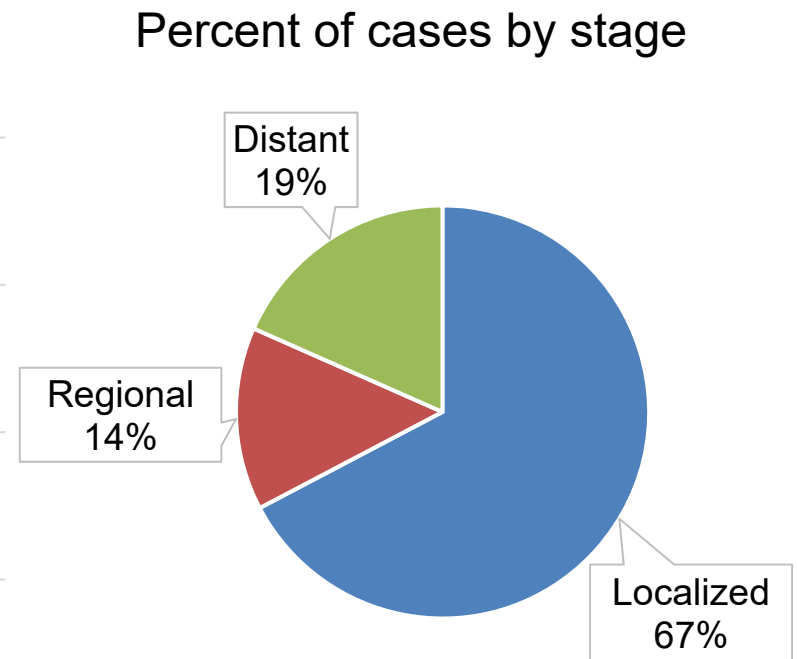
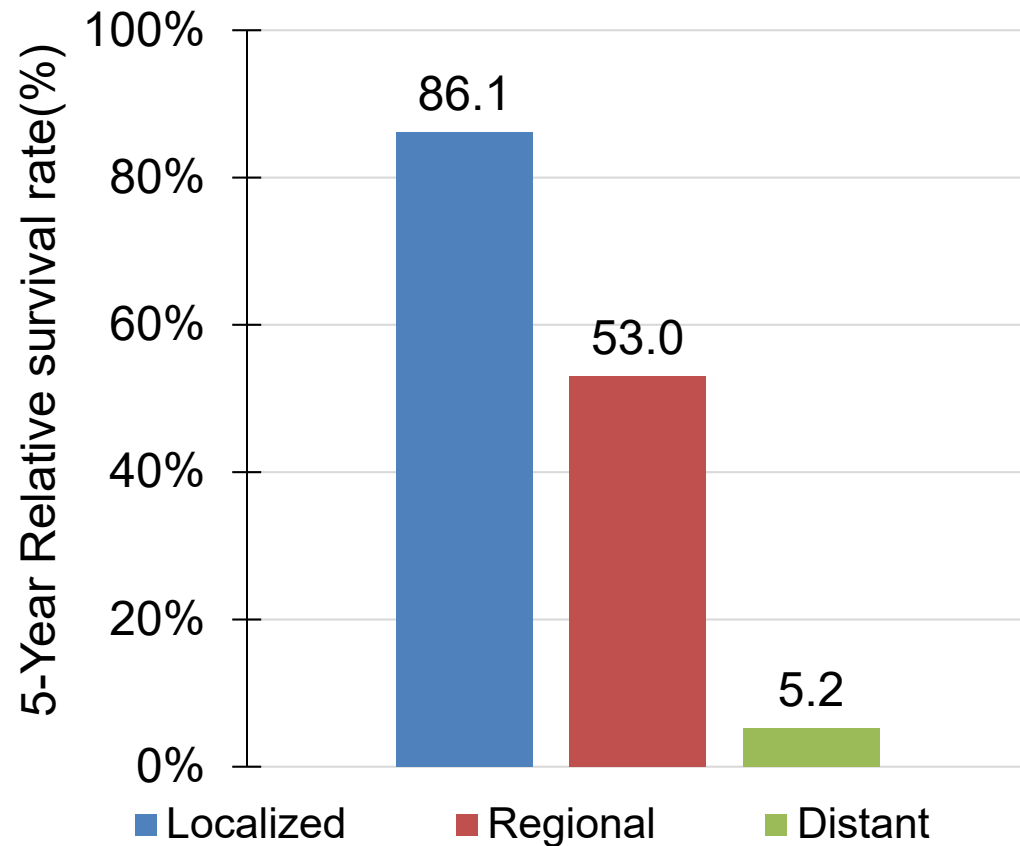
# Kidney and Renal Pelvis Cancer#: Louisiana 5-Year Relative Survival by Stage<sup>1</sup>, White Females, 2007-2013



#Only invasive cases.

<sup>1</sup> The stage distribution is based on Summary Stage 2000.

# Kidney and Renal Pelvis Cancer#: Louisiana 5-Year Relative Survival by Stage<sup>1</sup>, Black Males, 2007-2013

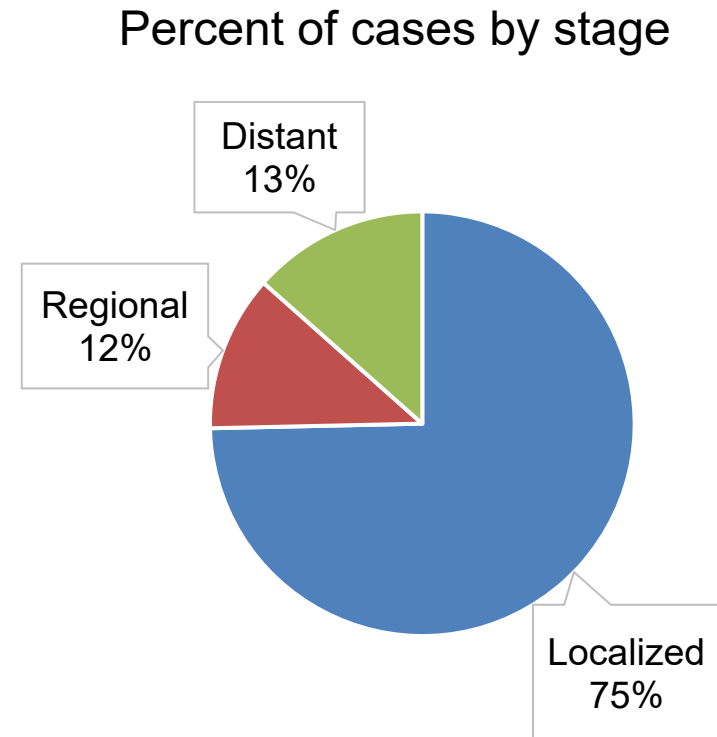
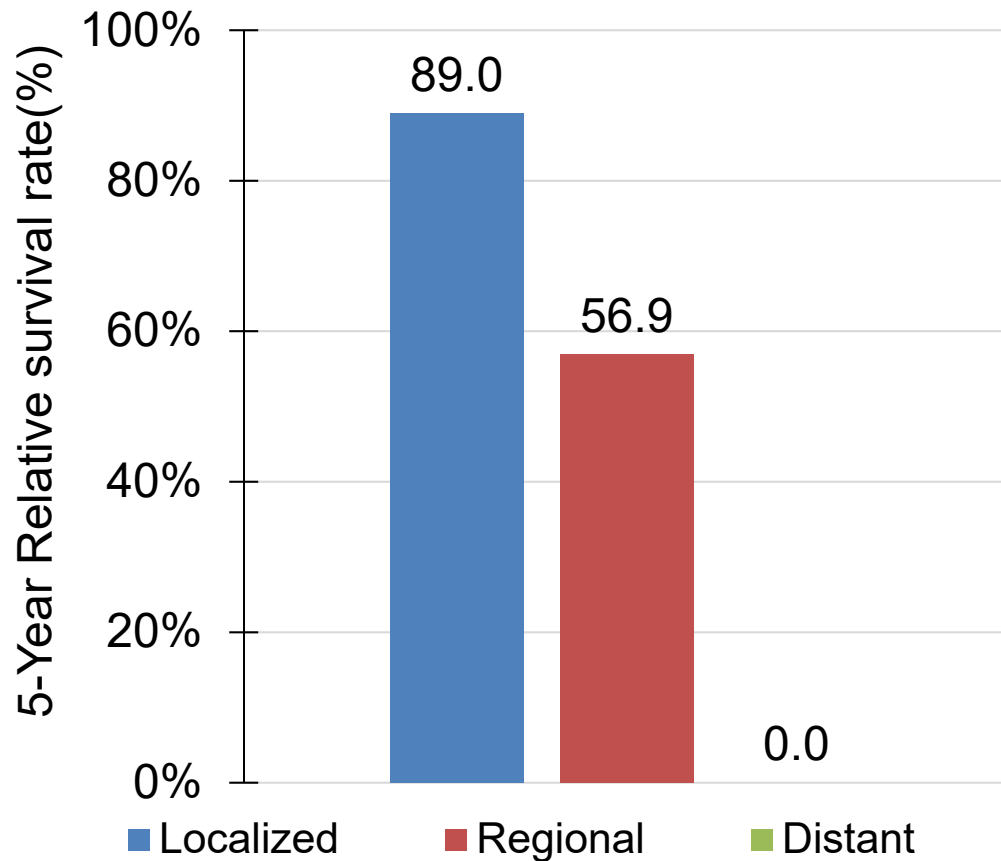


#Only invasive cases.

<sup>1</sup> The stage distribution is based on Summary Stage 2000.

\* The Unstaged 5-year relative survival could not be calculated due to lack of cases.

# Kidney and Renal Pelvis Cancer#: Louisiana 5-Year Relative Survival by Stage<sup>1</sup>, Black Females, Louisiana, 2007-2013



#Only invasive cases.

<sup>1</sup> The stage distribution is based on Derived Summary Stage 2000.

\* The Unstaged 5-year relative survival could not be calculated due to lack of cases.



# Appendix A. Regions of the Louisiana Tumor Registry

Regional Registry	Beginning Date of the Registry	Average Annual Population, 2010-2014	Parishes Covered
<b>Region 1 – New Orleans</b>	1974	21,864	Jefferson, Orleans, St. Bernard
<b>Region 2 – Baton Rouge</b>	1983	23,410	Ascension, Assumption, East Baton Rouge, East Feliciana, Iberville, Livingston, Pointe Coupée, St. Helena, Tangipahoa, West Baton Rouge, West Feliciana
<b>Region 3 – Southeast Louisiana</b>	1983	17,036	Lafourche, Plaquemines, St. Charles, St. James, St. John, St. Tammany, Terrebonne, Washington
<b>Region 4 – Acadiana</b>	1983	17,032	Acadia, Evangeline, Iberia, Lafayette, St. Landry, St. Martin, St. Mary, Vermilion
<b>Region 5 – Southwest Louisiana</b>	1983	7,698	Allen, Beauregard, Calcasieu, Cameron, Jefferson Davis
<b>Region 6 – Central Louisiana</b>	1988	8,283	Avoyelles, Catahoula, Concordia, Grant, La Salle, Rapides, Vernon, Winn
<b>Region 7 – Northwest Louisiana</b>	1988	14,817	Bienville, Bossier, Caddo, Claiborne, De Soto, Natchitoches, Red River, Sabine, Webster
<b>Region 8 – Northeast Louisiana</b>	1988	9,061	Caldwell, East Carroll, Franklin, Jackson, Lincoln, Madison, Morehouse, Ouachita, Richland, Tensas, Union, West Carroll
<b>Entire State</b>	1988	119,201	

Source: U.S. Bureau of Census and National Cancer Institute, April 2017.

# Data Sources

**Surveillance, Epidemiology, and End Results (SEER) Program** ([www.seer.cancer.gov](http://www.seer.cancer.gov)) SEER\*Stat Databases, National Cancer Institute, DCCPS, Surveillance Research Program, Surveillance Systems Branch, released April 2017, based on the November 2016 submission.

## **For Incidence:**

- Incidence - SEER 18 Regs Research Data + Hurricane Katrina Impacted Louisiana Cases, Nov 2016 Sub (2000-2014) <Katrina/Rita Population Adjustment>

## **For Mortality:**

- mortality – All COD, Aggregated With State, Total U.S. (1969-2014) <Katrina/Rita Population Adjustment>>

## **For Survival:**

- Incidence - SEER 18 Regs Research Data + Hurricane Katrina Impacted Louisiana Cases, Nov 2015 Sub (1973-2013 varying)

# Data Sources

- USCS:
  - U.S. Cancer Statistics Working Group. United States Cancer Statistics: 1999-2014 Incidence and Mortality Web-based Report. Atlanta: U.S. Department of Health and Human Services, Centers for Disease Control and Prevention and National Cancer Institute; 2017. Available at: [www.cdc.gov/uscs](http://www.cdc.gov/uscs).
- Cancer Facts & Figures:
  - American Cancer Society. *Cancer Facts & Figures 2017*. Atlanta: American Cancer Society; 2017.

# Data Sources

## NCI State profiles

- Incidence Data Sources:
  - Incidence data are provided by the National Program of Cancer Registries External Web Site Policy Cancer Surveillance System (NPCR-CSS), Centers for Disease Control and Prevention and by the National Cancer Institute's Surveillance, Epidemiology, and End Results (SEER) Program External Web Site Policy.
  - Population counts for denominators are based on Census populations as modified by NCI.
  - Rates are calculated using SEER\*Stat External Web Site Policy.
- Mortality Data Sources:
  - Mortality data are provided by the National Vital Statistics System External Web Site Policy at the National Center for Health Statistics of the Centers for Disease Control and Prevention.
  - Population counts for denominators are based on Census populations as modified by NCI..
  - Rates are calculated using SEER\*Stat External Web Site Policy.
  - Trends are determined by using Joinpoint External Web Site Policy analysis of available historical data and reporting the last segment as the most recent trend.

# Acknowledgements

- **Hospital cancer registries** (<http://louisianatumorregistry.lsuhs.edu/>)
- **Louisiana Cancer Registrars' Association** (<http://www.lcra-usa.org/>)
- **Physicians and staff members in:**
  - Medical records offices
  - Pathology laboratories
  - Physician offices and clinics
  - Hospice programs and nursing homes
- **Regional and central offices of the Louisiana Tumor Registry**  
(<http://louisianatumorregistry.lsuhs.edu/regionalregistries.html>)
- **School of Public Health, LSU Health Sciences Center–New Orleans**
- **Louisiana Cancer and Lung Trust Fund Board**
- **Coroners' offices**

# Sources of LTR Funding

- National Cancer Institute, SEER Program
- Centers for Disease Control and Prevention (CDC), National Program of Cancer Registries (NPCR)
- Louisiana Health Care Services Division

## **Editors**

Carla B. Rosales, MPH

Lauren Maniscalco, MPH

Meichin Hsieh, PhD, MSPH, CTR

Xiaocheng Wu, MD, MPH, CTR

## **Contributors**

Xiangrong Li, MD, MSPH

Brent Mumphrey, BS

Tina Lefante, MPH

Lisa Pareti, BS, RHIT, CTR

Yong Yi, PhD, MS

# Questions?

Contact:

[LTR-info@lsuhsc.edu](mailto:LTR-info@lsuhsc.edu)

or

504/568-5757