

Louisiana Cancer Facts & Figures, Female Breast Cancer

Louisiana Tumor Registry

July, 2017

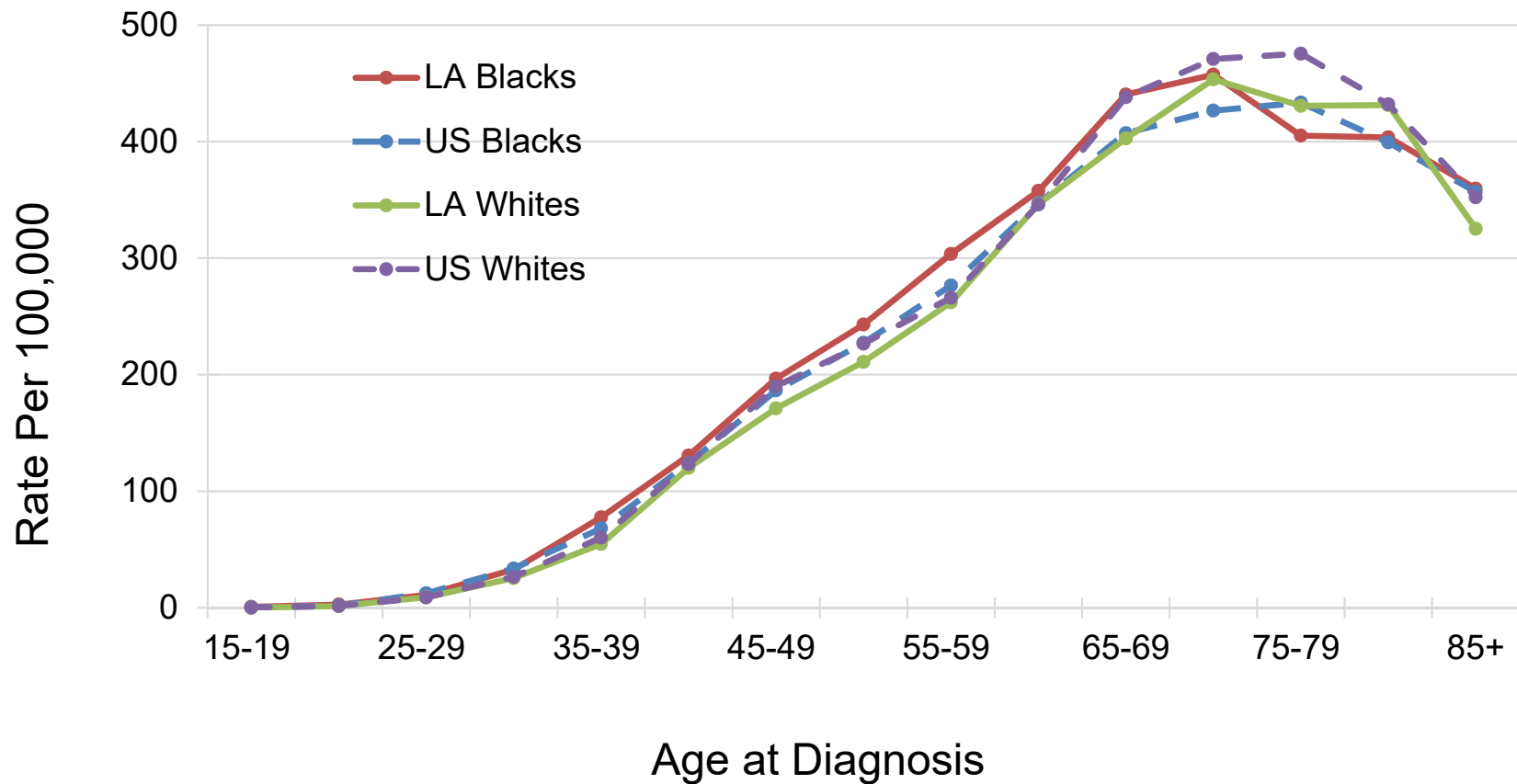
Female Breast Cancer

- Female breast cancer was the most common cancer and the 2nd leading cause of cancer death in Louisiana women from 2010 to 2014.¹
- Between 2010 and 2014, the average annual incidence rate of female breast cancer in Louisiana ranked 29th in the nation and the mortality rate was the 2nd highest in the U.S.¹
- About 3,320 new females breast cancers are expected to be diagnosed and about 620 females are expected to die of breast cancer in Louisiana in 2017.²

1. Data source: [NCI state cancer profile](#).

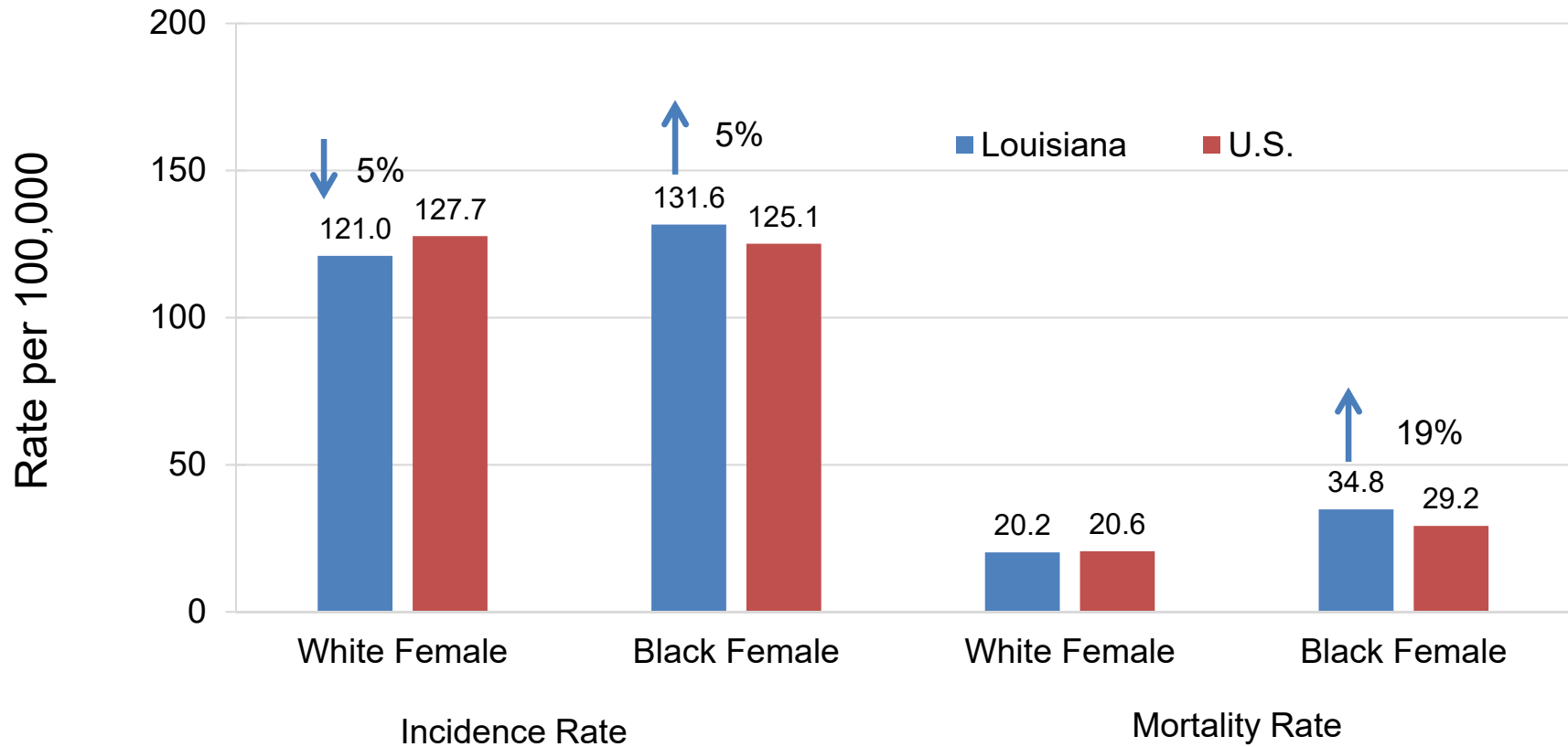
2. Data source: [American Cancer Society, Cancer Facts & Figures 2017](#).

Female Breast Cancer: Age-Specific Incidence Rates[#] by Race, 2010-2014



Only invasive cases.
U.S. data source: 18 SEER registries.

Female Breast Cancer: Incidence[#] and Mortality Rates^{1,2}, 2010-2014



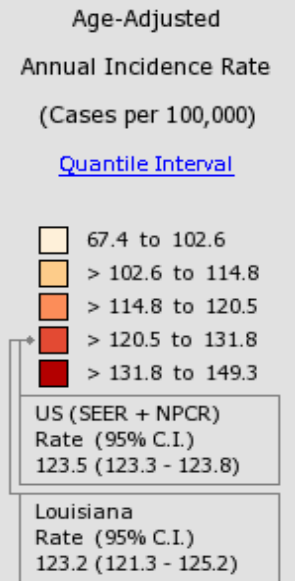
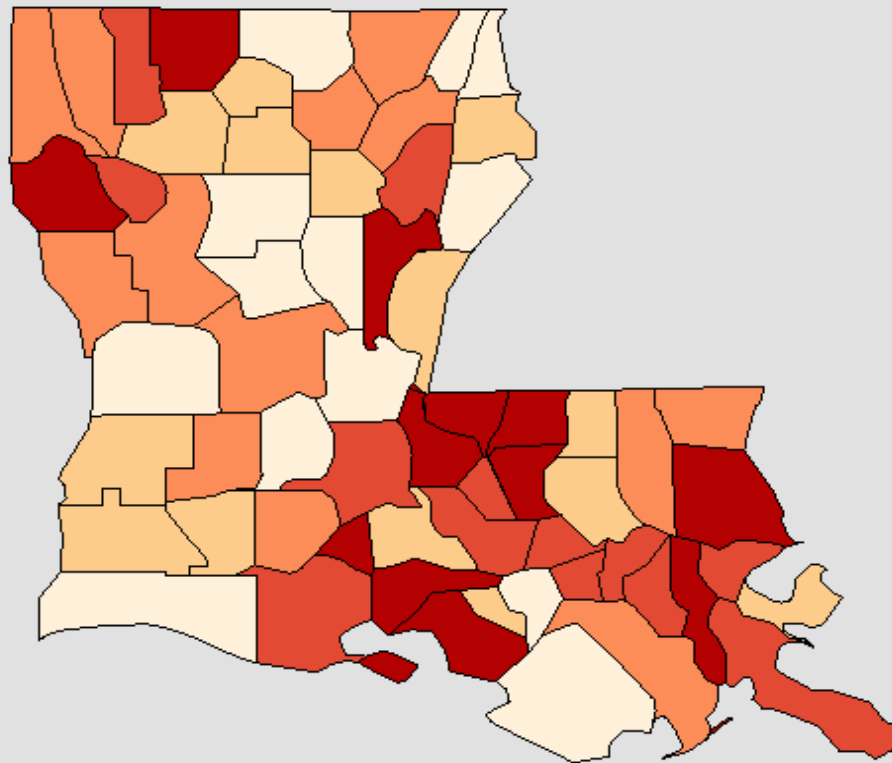
Invasive cases only.

¹ Age-adjusted to the 2000 U.S. standard population;

² Incidence data source: SEER 18 registries; Mortality data source: National Center for Health Statistics (NCHS).

↓↑ Rate of Louisiana is significantly different from that of the U.S.

Incidence Rates[#] of Female Breast Cancer in Louisiana, All Races, All Ages, 2010-2014



Only invasive cases.

Notes:

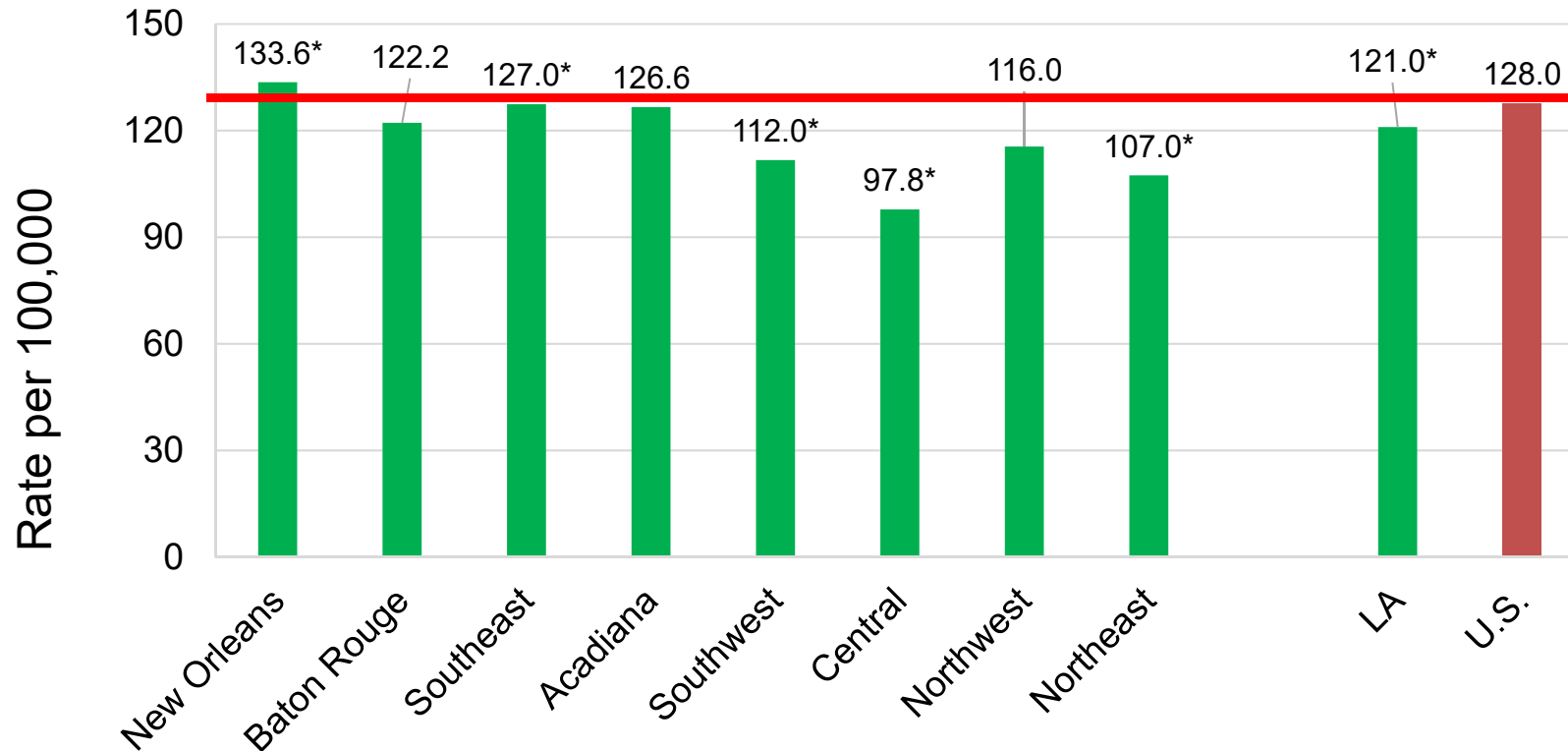
[State Cancer Registries](#) may provide more current or more local data.

Data presented on the State Cancer Profiles Web Site may differ from statistics reported by the State Cancer Registries ([for more information](#)).

† Incidence rates (cases per 100,000 population per year) are age-adjusted to the [2000 US standard population](#) (19 age groups: <1, 1-4, 5-9, ... , 80-84, 85+). Rates are for invasive cancer only (except for bladder which is invasive and in situ) or unless otherwise specified. Rates calculated using SEER*Stat. Population counts for denominators are based on Census populations as modified by NCI. The [1969-2015 US Population Data](#) File is used for SEER and NPCR incidence rates.

Data for the United States does not include data from Puerto Rico

Female Breast Cancer Incidence Rates^{#,1,2}, by Region³: Louisiana, Whites, 2010-2014



Only invasive cases.

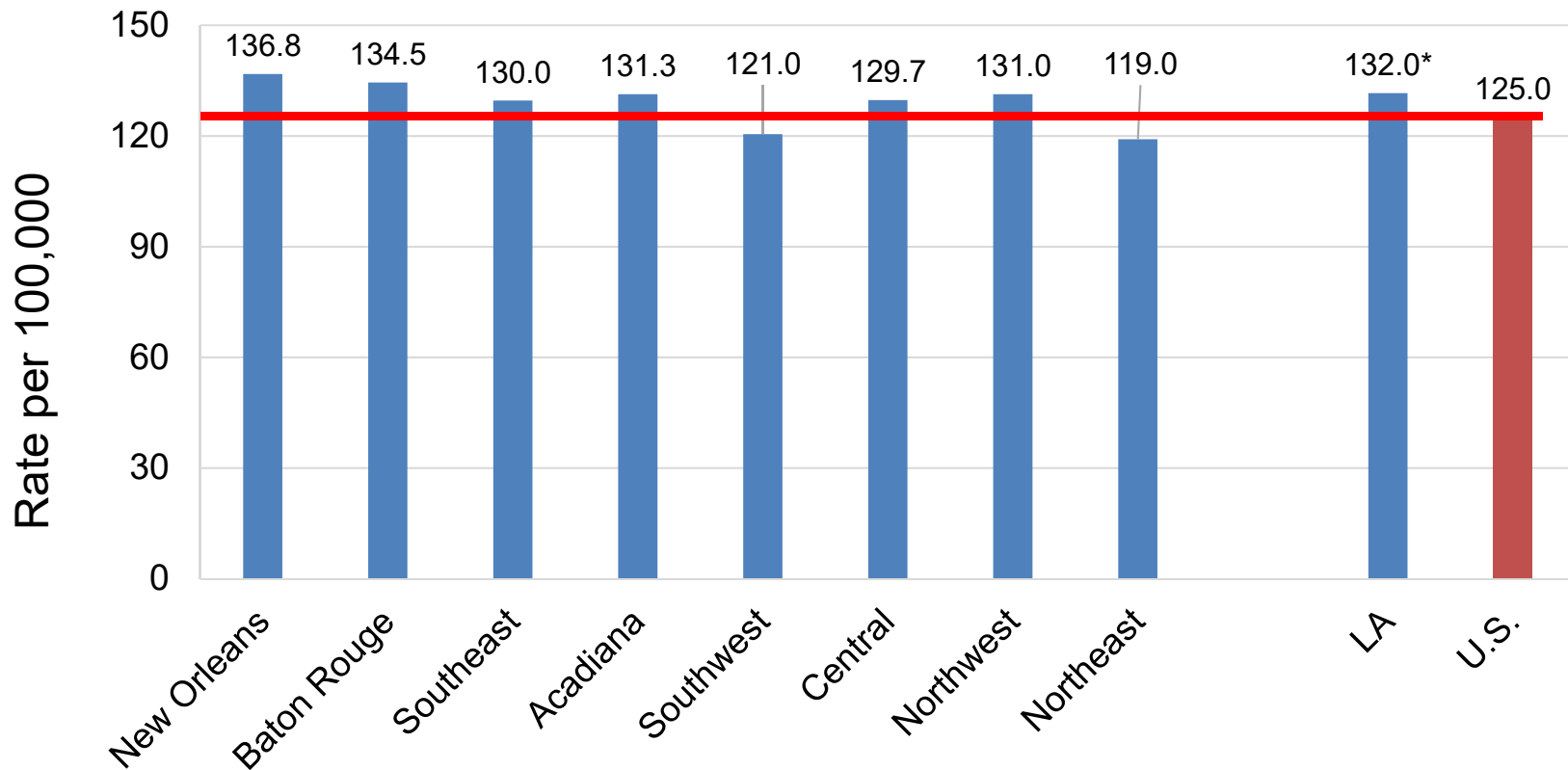
¹ Age-adjusted to the 2000 U.S. standard population.

² Data source for the U.S. was the 18 SEER registries.

³ See Appendix A.

* Incidence rate of regions/Louisiana is significantly different from that of the U.S.

Female Breast Cancer Incidence Rates^{#,1,2}, by Region³: Louisiana, Blacks, 2010-2014



Only invasive cases.

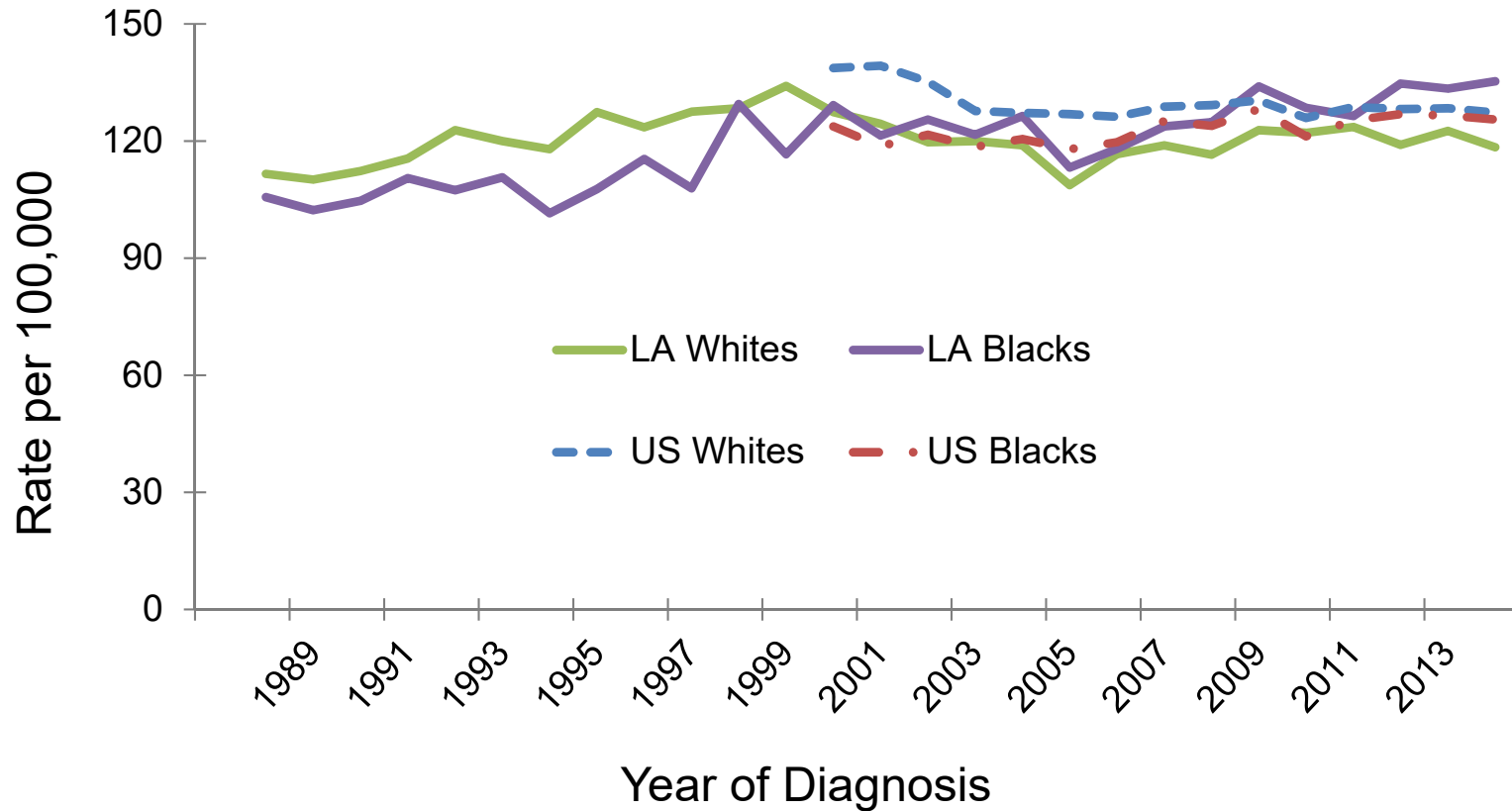
¹ Age-adjusted to the 2000 U.S. standard population.

² Data source for U.S. was the 18 SEER registries.

³ See Appendix A.

* Incidence rate of regions/Louisiana is significantly different from that of the U.S.

Female Breast Cancer: Trend of Incidence Rates^{#,1,2}, 1988-2014

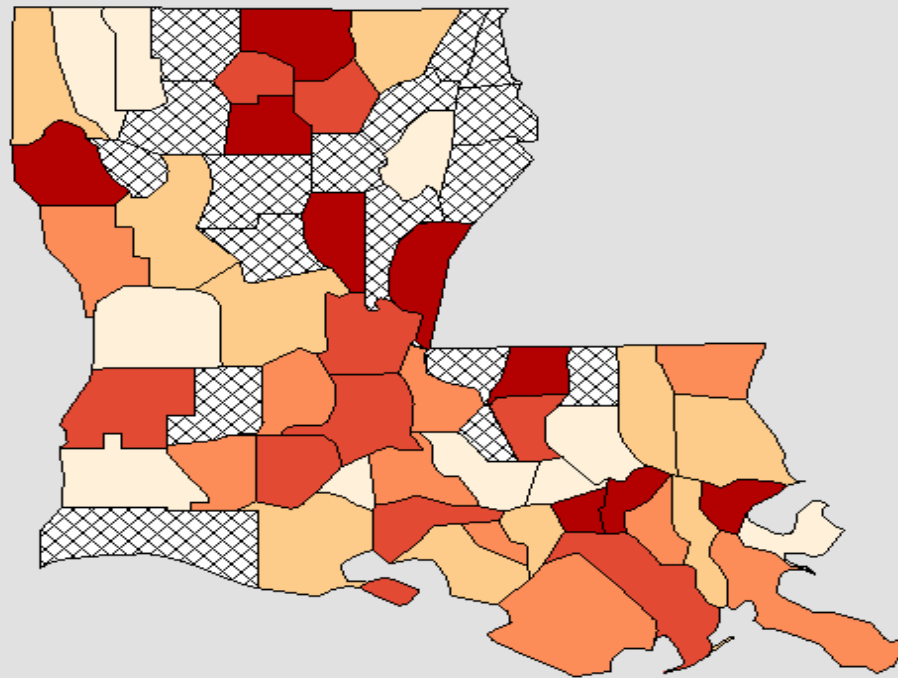


Invasive cases only.

¹ Age-adjusted to the 2000 U.S. standard population.

² U.S. incidence data source: 18 SEER registries.

Mortality Rates of Female Breast Cancer in Louisiana, All Races, All Ages, 2010-2014



Age-Adjusted
Annual Death Rate
(Deaths per 100,000)

[Quantile Interval](#)

- 16.4 to 20.8
- > 20.8 to 24.2
- > 24.2 to 26.1
- > 26.1 to 29.6
- > 29.6 to 42.3

⊠ Suppressed*

United States
Rate (95% C.I.)
21.2 (21.1 - 21.3)

Louisiana
Rate (95% C.I.)
24.2 (23.4 - 25.1)

Healthy People 2020
Goal C-3
20.7

Notes:

[State Cancer Registries](#) may provide more current or more local data.

Data presented on the State Cancer Profiles Web Site may differ from statistics reported by the State Cancer Registries ([for more information](#)).

Source: Death data provided by the [National Vital Statistics System](#) public use data file. Death rates calculated by the National Cancer Institute using [SEER*Stat](#). Death rates (deaths per 100,000 population per year) are age-adjusted to the [2000 US standard population](#) (19 age groups: <1, 1-4, 5-9, ... , 80-84, 85+). The Healthy People 2020 goals are based on rates adjusted using different methods but the differences should be minimal.

Population counts for denominators are based on the Census [1969-2015 US Population Data](#) File as modified by NCI.

* Data have been [suppressed](#) to ensure confidentiality and stability of rate estimates. Data is currently being suppressed if there are fewer than 16 counts for the time period.

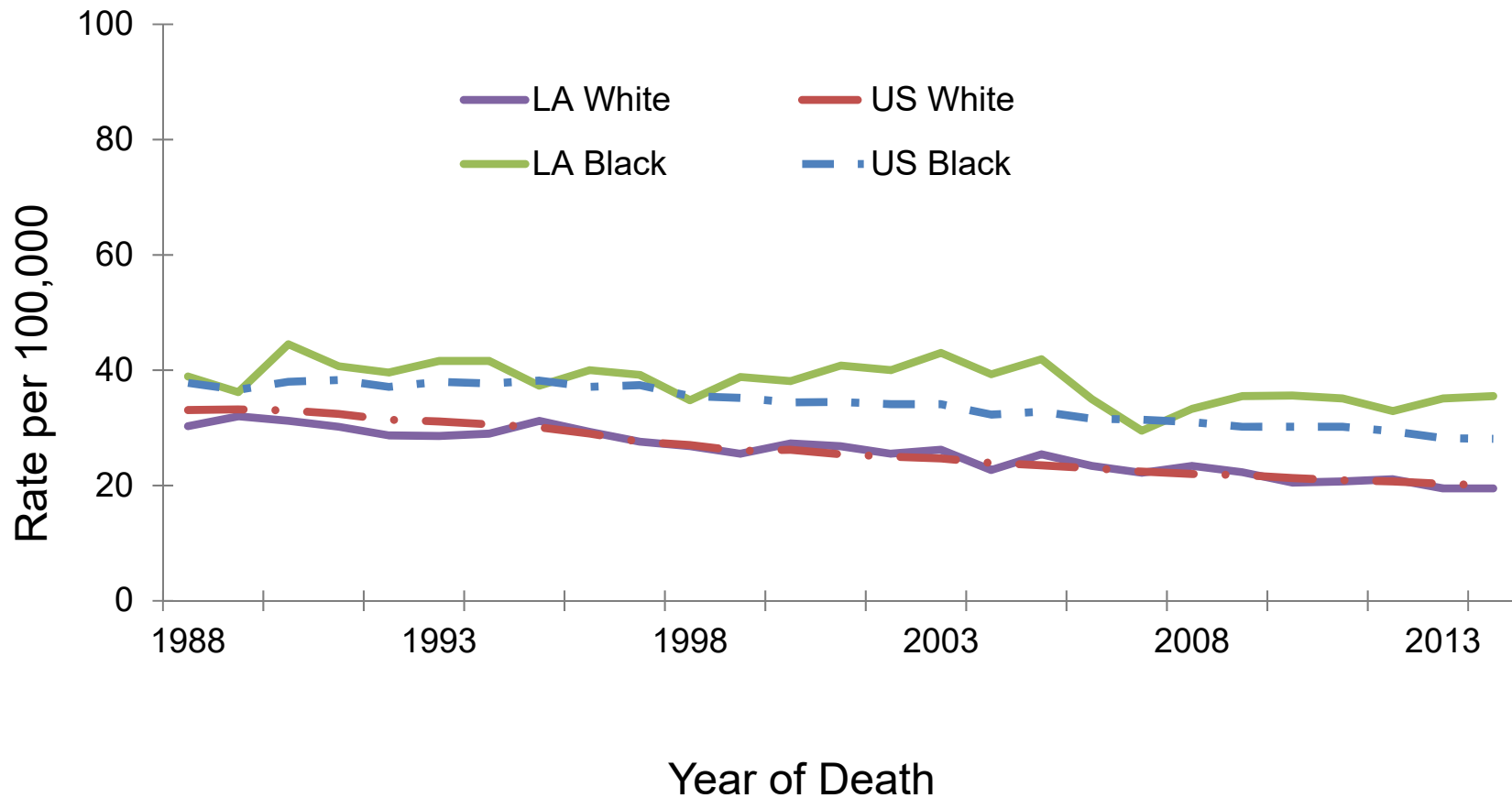
** Data have been [suppressed](#) for states with a population below 50,000 per sex combination for American Indian/Alaska Native or Asian/Pacific Islanders because of concerns regarding the relatively small size of these populations in some states.

Healthy People 2020 Goal C-3 : Reduce the female breast cancer death rate to 20.7.

[Healthy People 2020](#) Objectives provided by the [Centers for Disease Control and Prevention](#).

Data for the United States does not include data from Puerto Rico

Female Breast Cancer: Trends of Mortality Rates^{1,2}, 1988-2014

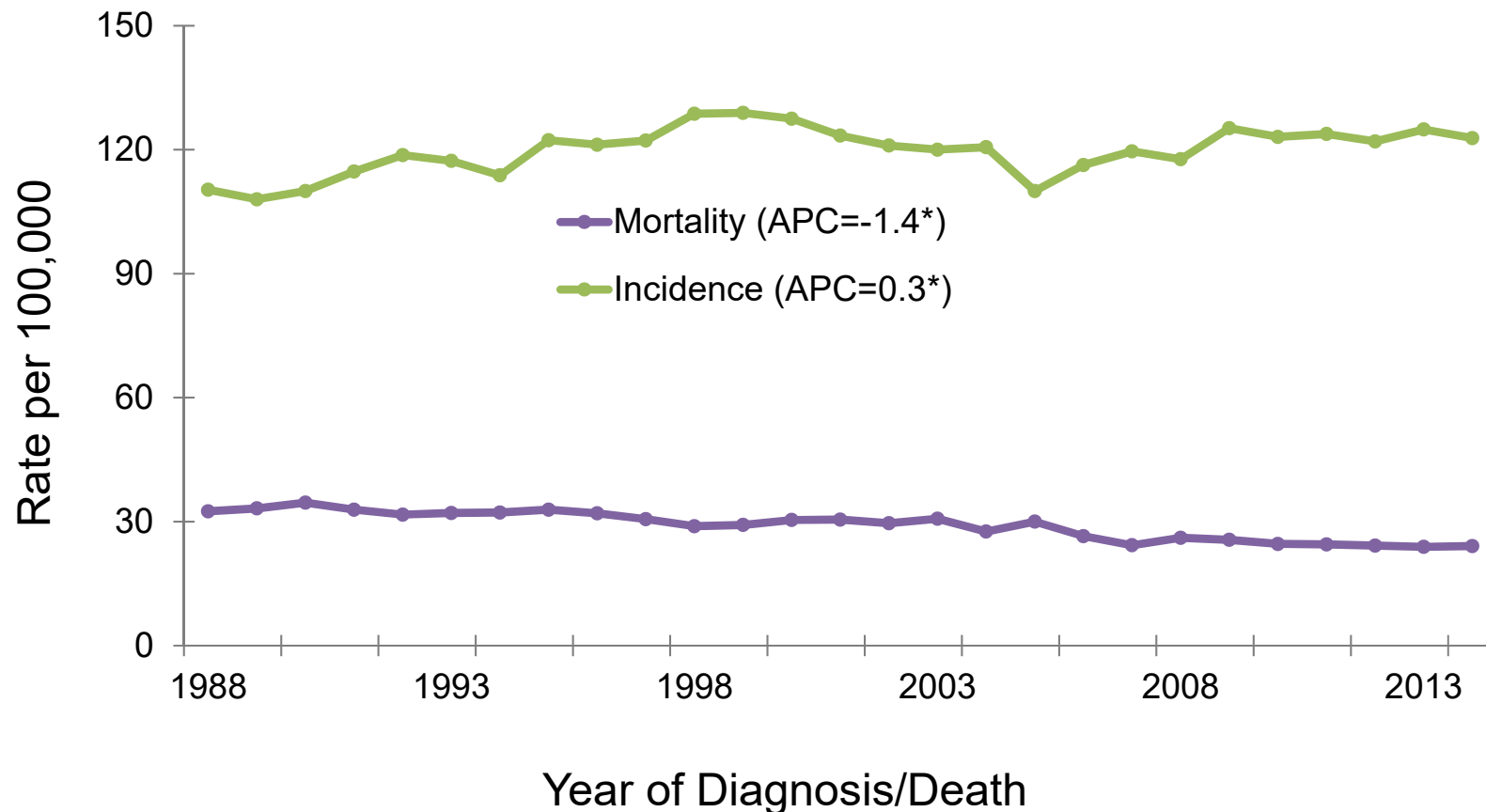


¹ Age-adjusted to the 2000 U.S. standard population.

² Data source: National Center of Health Statistics (NHCS) mortality rates.

Female Breast Cancer: Louisiana

Trends of Incidence[#] and Mortality Rates, 1988-2014



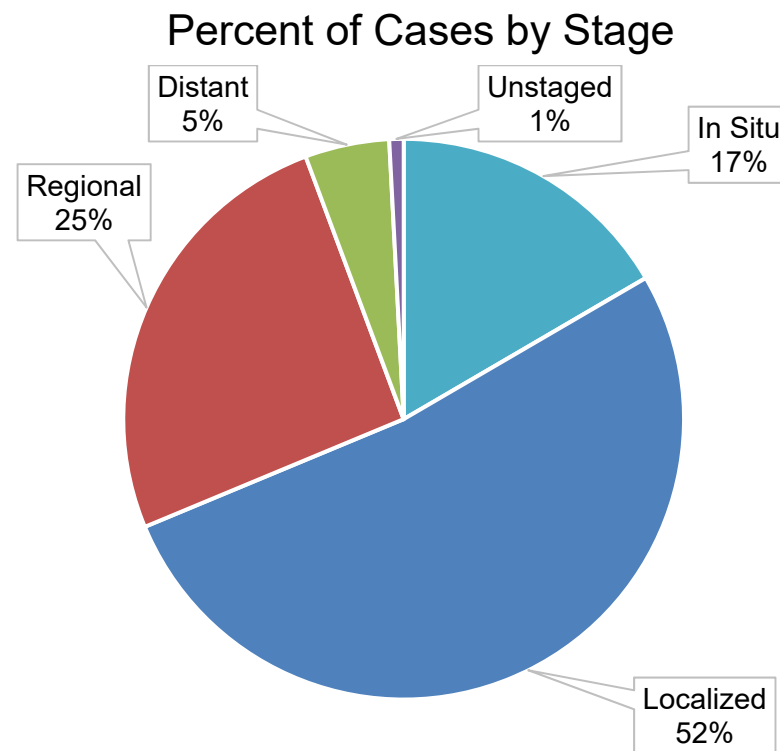
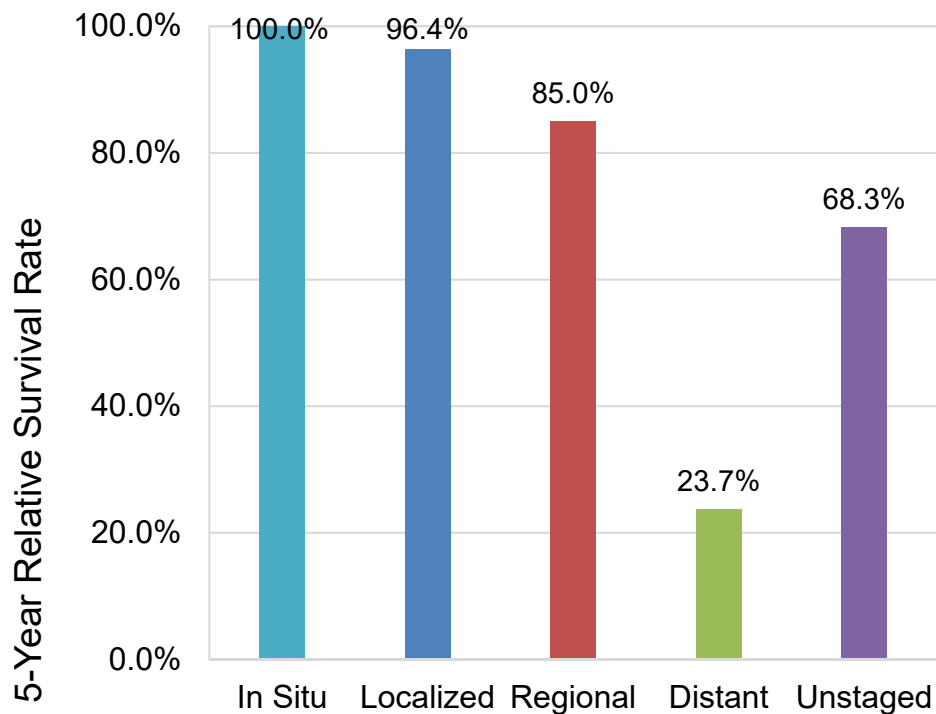
[#]Invasive cases only.

Annual average percent change (APC) were calculated using weighted least squares method.

* APC significantly different from zero.

Female Breast Cancer#: Louisiana

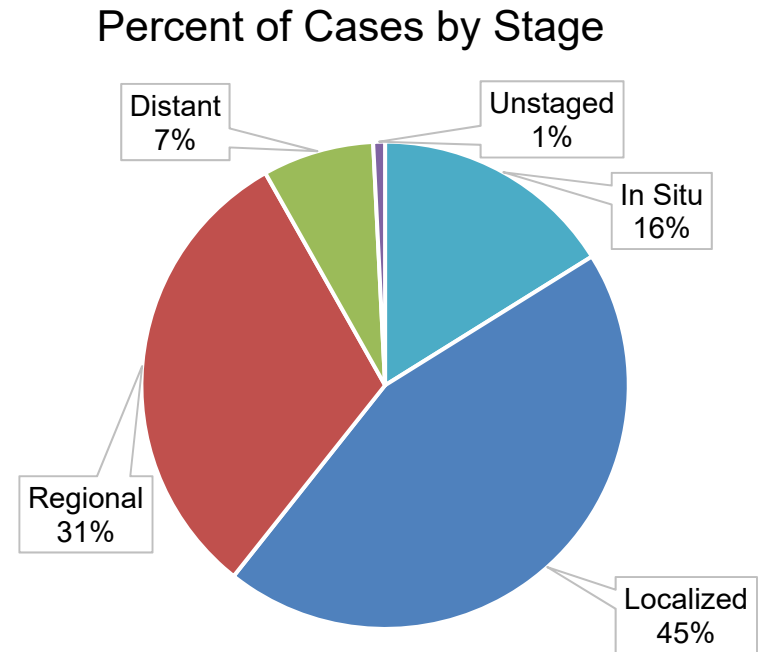
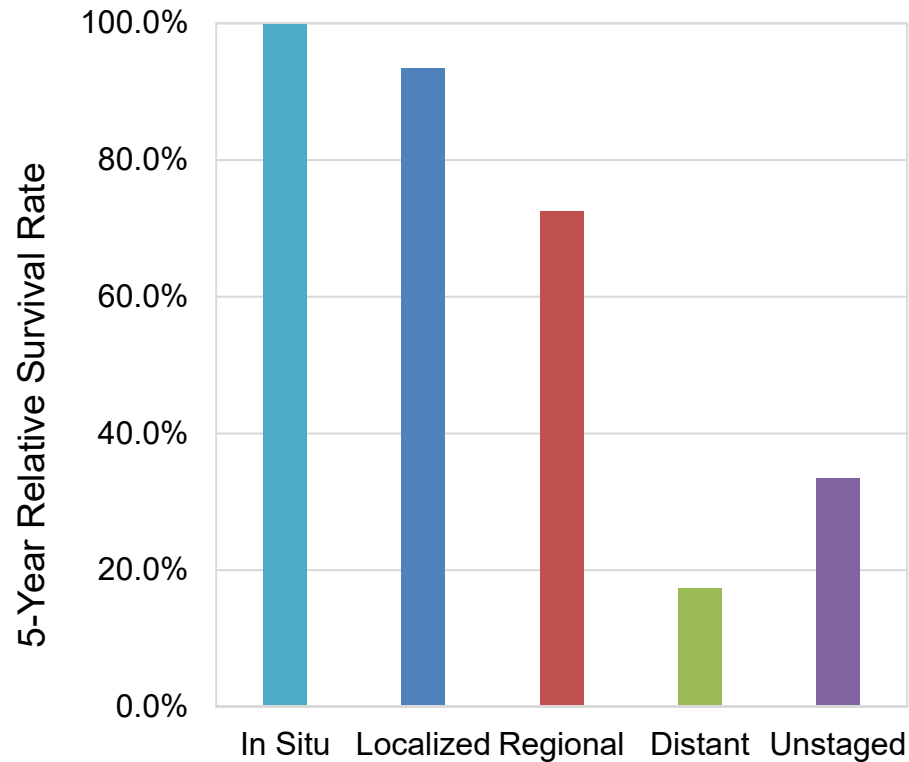
5-Year Relative Survival by Stage¹, Whites, 2007-2013



#Only invasive cases.

¹ The stage distribution is based on Summary Stage 2000.

Female Breast Cancer#: Louisiana 5-Year Relative Survival by Stage¹, Blacks, 2007-2013



#Only invasive cases.

¹ The stage distribution is based on Summary Stage 2000.

Appendix A. Regions of the Louisiana Tumor Registry

Regional Registry	Beginning Date of the Registry	Average Annual Population, 2010-2014	Parishes Covered
Region 1 – New Orleans	1974	21,864	Jefferson, Orleans, St. Bernard
Region 2 – Baton Rouge	1983	23,410	Ascension, Assumption, East Baton Rouge, East Feliciana, Iberville, Livingston, Pointe Coupée, St. Helena, Tangipahoa, West Baton Rouge, West Feliciana
Region 3 – Southeast Louisiana	1983	17,036	Lafourche, Plaquemines, St. Charles, St. James, St. John, St. Tammany, Terrebonne, Washington
Region 4 – Acadiana	1983	17,032	Acadia, Evangeline, Iberia, Lafayette, St. Landry, St. Martin, St. Mary, Vermilion
Region 5 – Southwest Louisiana	1983	7,698	Allen, Beauregard, Calcasieu, Cameron, Jefferson Davis
Region 6 – Central Louisiana	1988	8,283	Avoyelles, Catahoula, Concordia, Grant, La Salle, Rapides, Vernon, Winn
Region 7 – Northwest Louisiana	1988	14,817	Bienville, Bossier, Caddo, Claiborne, De Soto, Natchitoches, Red River, Sabine, Webster
Region 8 – Northeast Louisiana	1988	9,061	Caldwell, East Carroll, Franklin, Jackson, Lincoln, Madison, Morehouse, Ouachita, Richland, Tensas, Union, West Carroll
Entire State	1988	119,201	

Source: U.S. Bureau of Census and National Cancer Institute, April 2017.

Data Sources

Surveillance, Epidemiology, and End Results (SEER) Program (www.seer.cancer.gov) SEER*Stat Databases, National Cancer Institute, DCCPS, Surveillance Research Program, Surveillance Systems Branch, released April 2017, based on the November 2016 submission.

For Incidence:

- Incidence - SEER 18 Regs Research Data + Hurricane Katrina Impacted Louisiana Cases, Nov 2016 Sub (2000-2014) <Katrina/Rita Population Adjustment>

For Mortality:

- mortality – All COD, Aggregated With State, Total U.S. (1969-2014) <Katrina/Rita Population Adjustment>>

For Survival:

- Incidence - SEER 18 Regs Research Data + Hurricane Katrina Impacted Louisiana Cases, Nov 2015 Sub (1973-2013 varying)

Data Sources

- USCS:
 - U.S. Cancer Statistics Working Group. United States Cancer Statistics: 1999-2014 Incidence and Mortality Web-based Report. Atlanta: U.S. Department of Health and Human Services, Centers for Disease Control and Prevention and National Cancer Institute; 2017. Available at: www.cdc.gov/uscs.
- Cancer Facts & Figures:
 - American Cancer Society. *Cancer Facts & Figures 2017*. Atlanta: American Cancer Society; 2017.

Data Sources

NCI State profiles

- Incidence Data Sources:
 - Incidence data are provided by the National Program of Cancer Registries External Web Site Policy Cancer Surveillance System (NPCR-CSS), Centers for Disease Control and Prevention and by the National Cancer Institute's Surveillance, Epidemiology, and End Results (SEER) Program External Web Site Policy.
 - Population counts for denominators are based on Census populations as modified by NCI.
 - Rates are calculated using SEER*Stat External Web Site Policy.
- Mortality Data Sources:
 - Mortality data are provided by the National Vital Statistics System External Web Site Policy at the National Center for Health Statistics of the Centers for Disease Control and Prevention.
 - Population counts for denominators are based on Census populations as modified by NCI..
 - Rates are calculated using SEER*Stat External Web Site Policy.
 - Trends are determined by using Joinpoint External Web Site Policy analysis of available historical data and reporting the last segment as the most recent trend.

Acknowledgements

- **Hospital cancer registries** (<http://louisianatumorregistry.lsuhs.edu/>)
- **Louisiana Cancer Registrars' Association** (<http://www.lcra-usa.org/>)
- **Physicians and staff members in:**
 - Medical records offices
 - Pathology laboratories
 - Physician offices and clinics
 - Hospice programs and nursing homes
- **Regional and central offices of the Louisiana Tumor Registry** (<http://louisianatumorregistry.lsuhs.edu/regionalregistries.html>)
- **School of Public Health, LSU Health Sciences Center–New Orleans**
- **Louisiana Cancer and Lung Trust Fund Board**
- **Coroners' offices**

Sources of LTR Funding

- National Cancer Institute, SEER Program
- Centers for Disease Control and Prevention (CDC), National Program of Cancer Registries (NPCR)
- Louisiana Health Care Services Division

Editors

Caitlin Simon, BS

Yong Yi, PhD, MS

Lauren Maniscalco, MPH

Meichin Hsieh, PhD, MSPH, CTR

Xiaocheng Wu, MD, MPH, CTR

Contributors

Brent Mumphrey, BS

Tina Lefante, MPH

Lisa Pareti, BS, RHIT, CTR

Questions?

Contact:

LTR-info@lsuhsc.edu

or

504/568-5757