

# Louisiana Cancer Facts & Figures, Urinary Bladder Cancer, 2016

Louisiana Tumor Registry

September, 2016

# Urinary Bladder Cancer\*

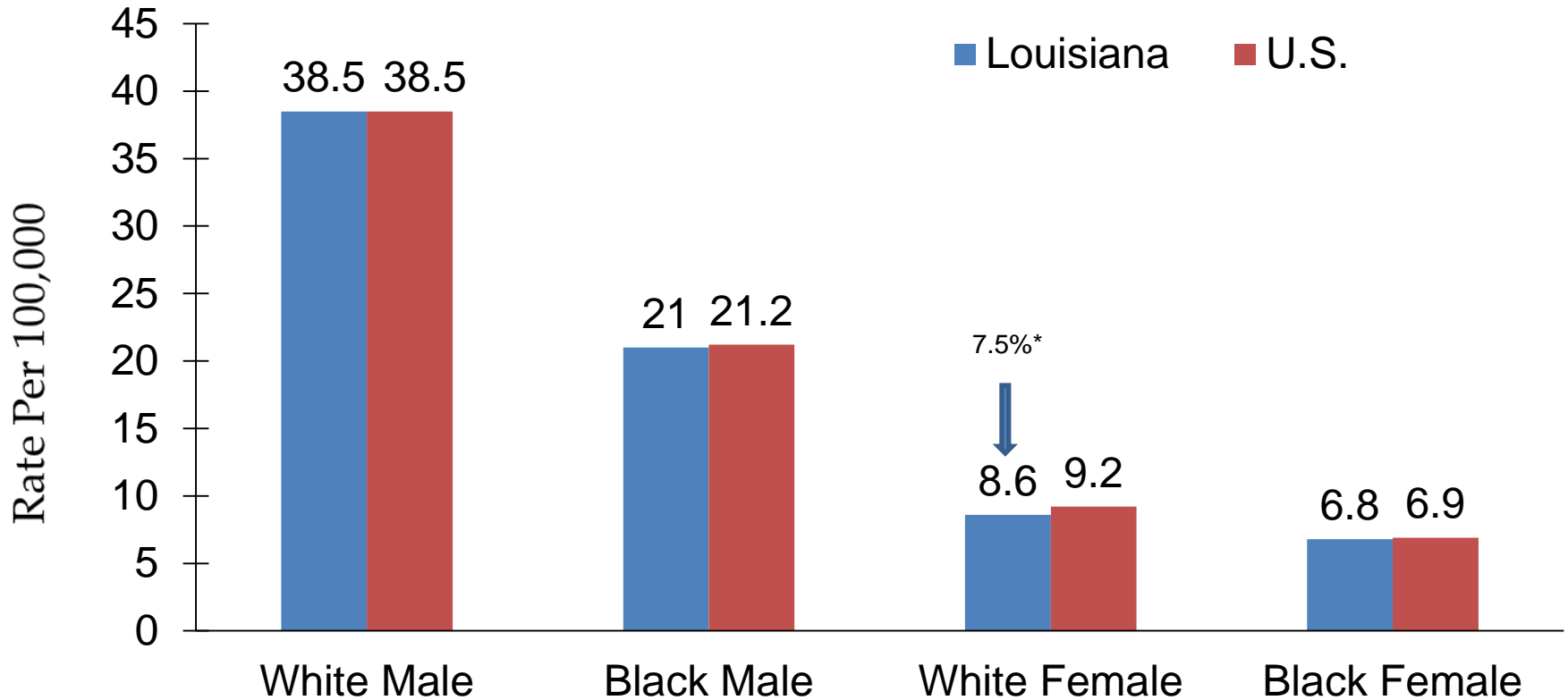
- From 2009 to 2013, urinary bladder cancer was the 7<sup>th</sup> most common cancer in Louisiana and the 6<sup>th</sup> in U.S.<sup>1</sup>
- Bladder cancer was the 14<sup>th</sup> leading cause of cancer death in Louisiana and the 11<sup>th</sup> in the U.S. from 2009 to 2013.<sup>1</sup>
- About 940 new urinary bladder cancer cases are expected to be diagnosed and about 210 persons are expected to die of this cancer in Louisiana in 2016.<sup>2</sup>

1. Data source: Centers for Disease Control and Prevention

2. Data source: American Cancer Society, Cancer Facts & Figures 2016

\* ICD-O-3/WHO 2008 code:C670-C679. excluding ICD-O-3 histology (type): 9050-9055, 9140, 9590-9992

# Urinary Bladder Cancer: Incidence Rates<sup>1</sup>, Louisiana vs. US,<sup>2</sup> 2009-2013

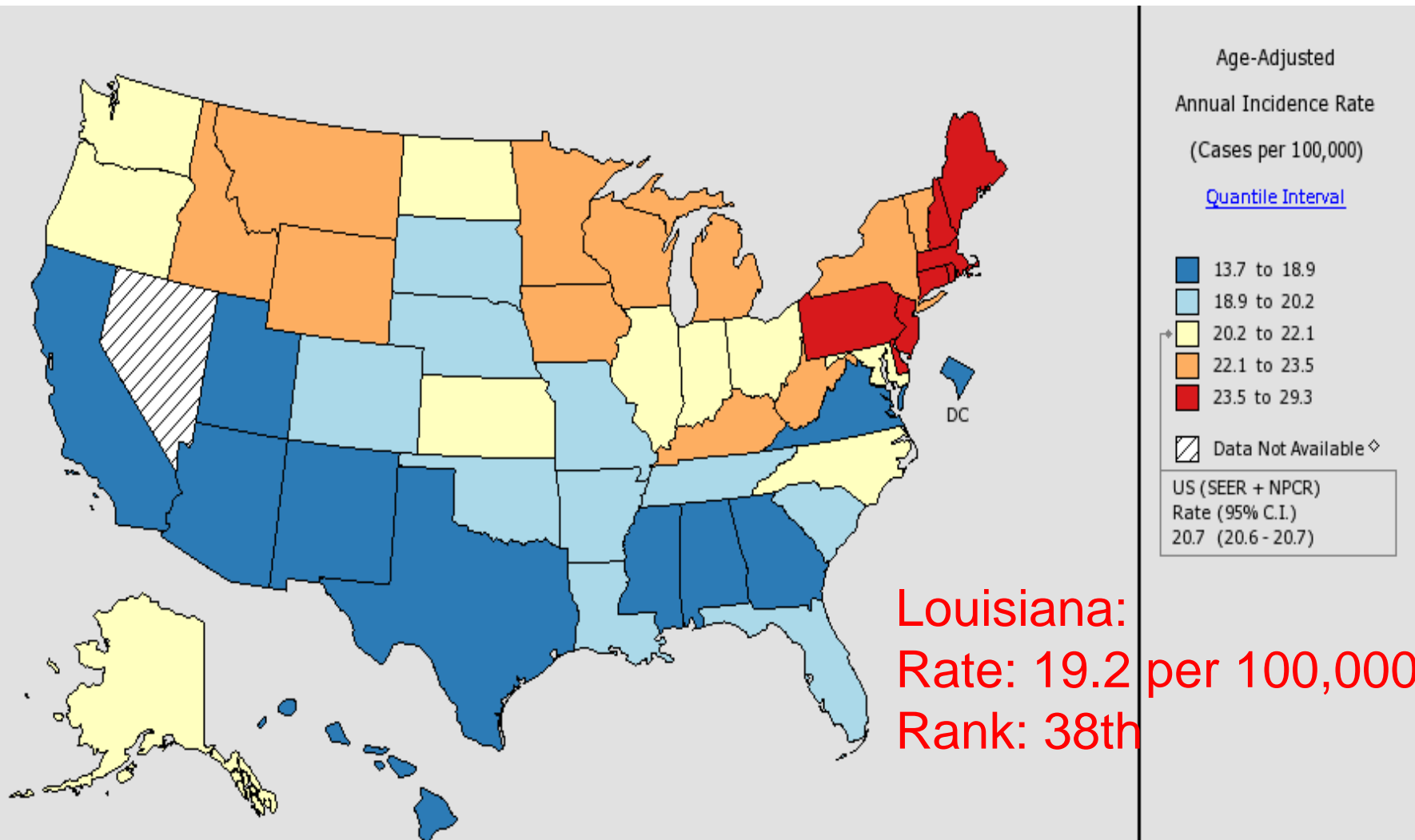


<sup>1</sup> Age-adjusted to the 2000 U.S. standard population.

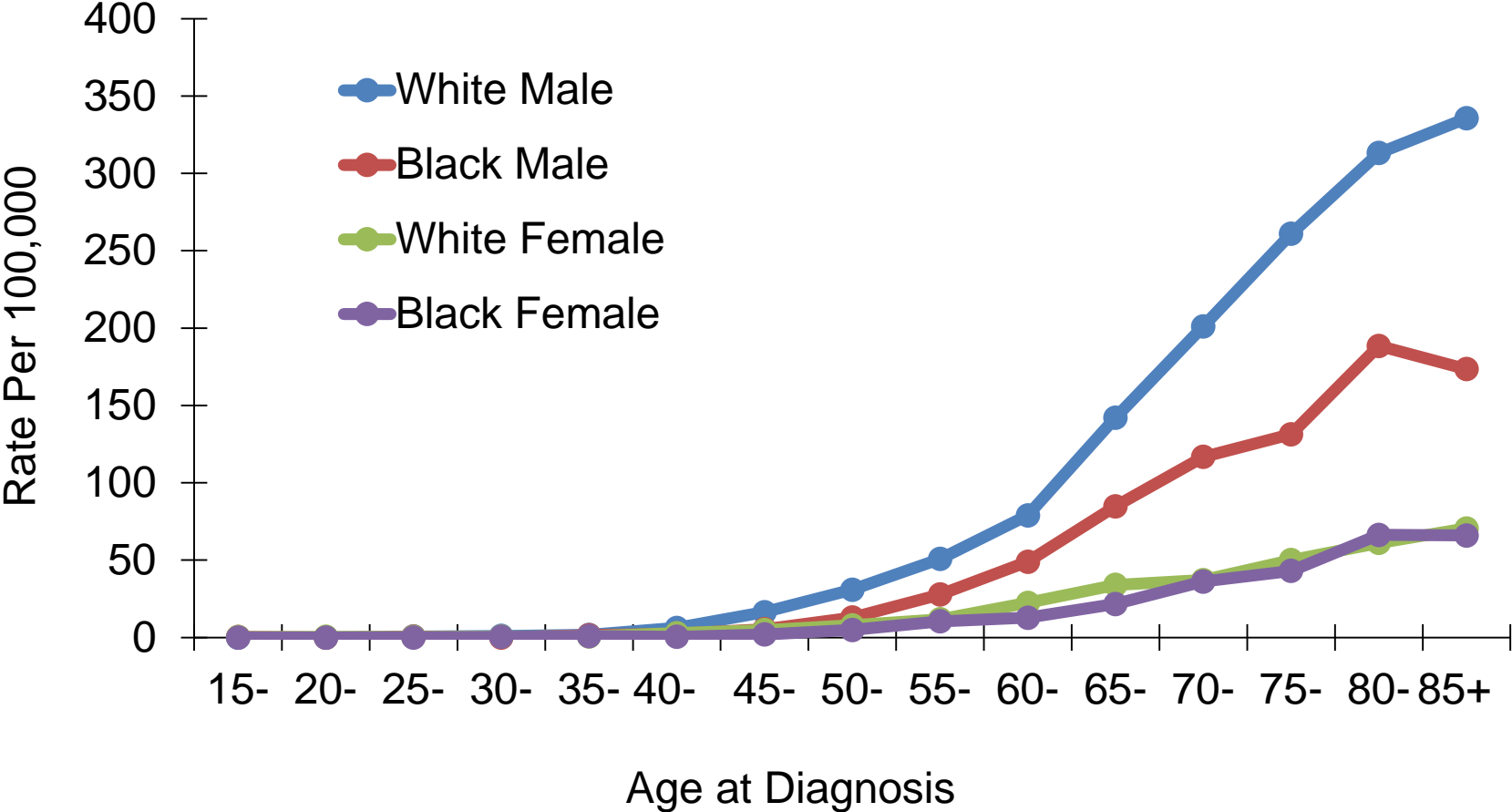
<sup>2</sup> Incidence data source: 18 SEER registries.

\* Incidence rate of Louisiana is significantly different from that of the U.S.

# Incidence Rates of Urinary Bladder Cancer in the U.S., All Races, Both Sexes, 2009-2013

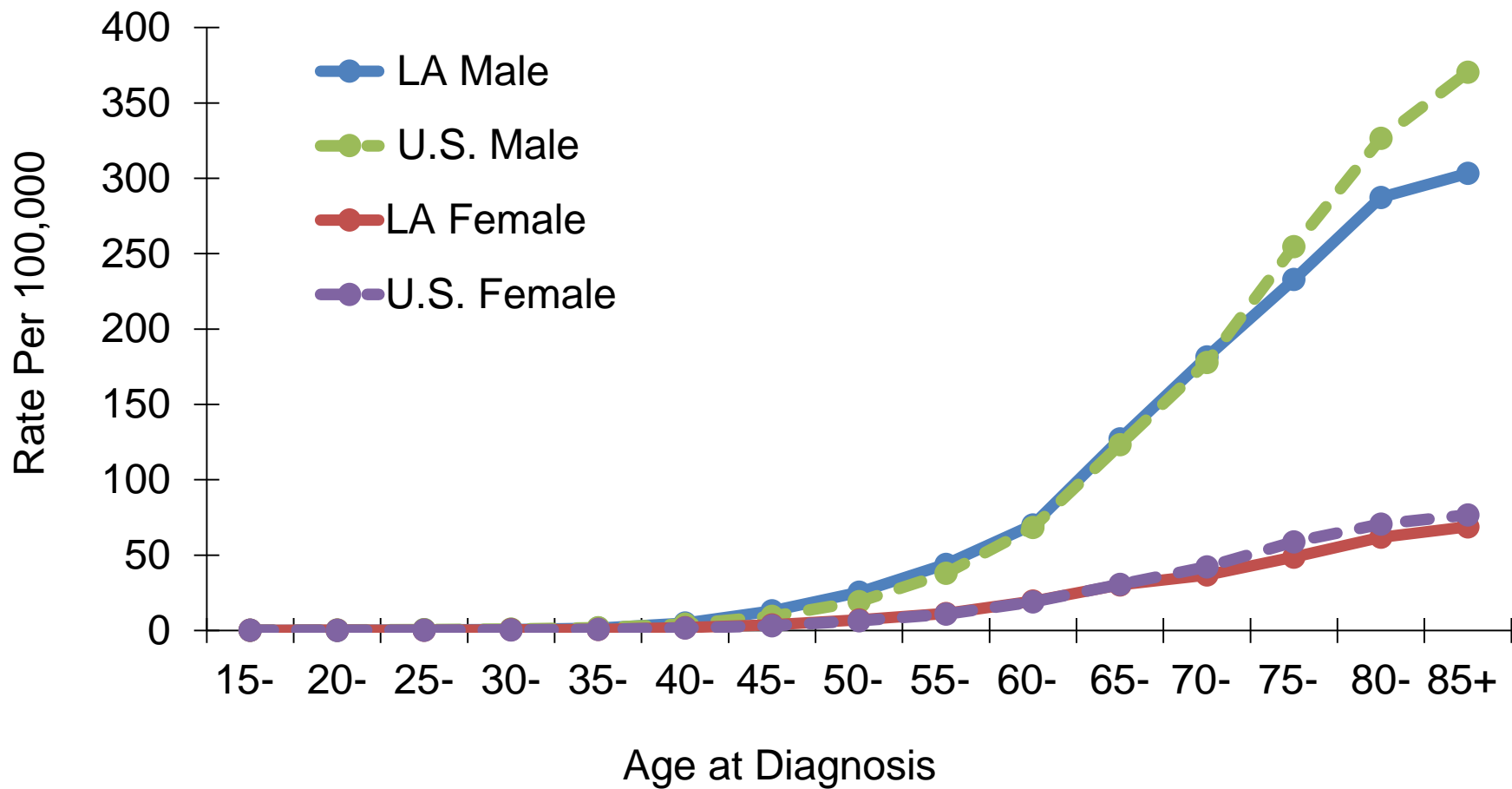


# Urinary Bladder Cancer : Age-Specific Incidence Rates, Louisiana, 2009-2013



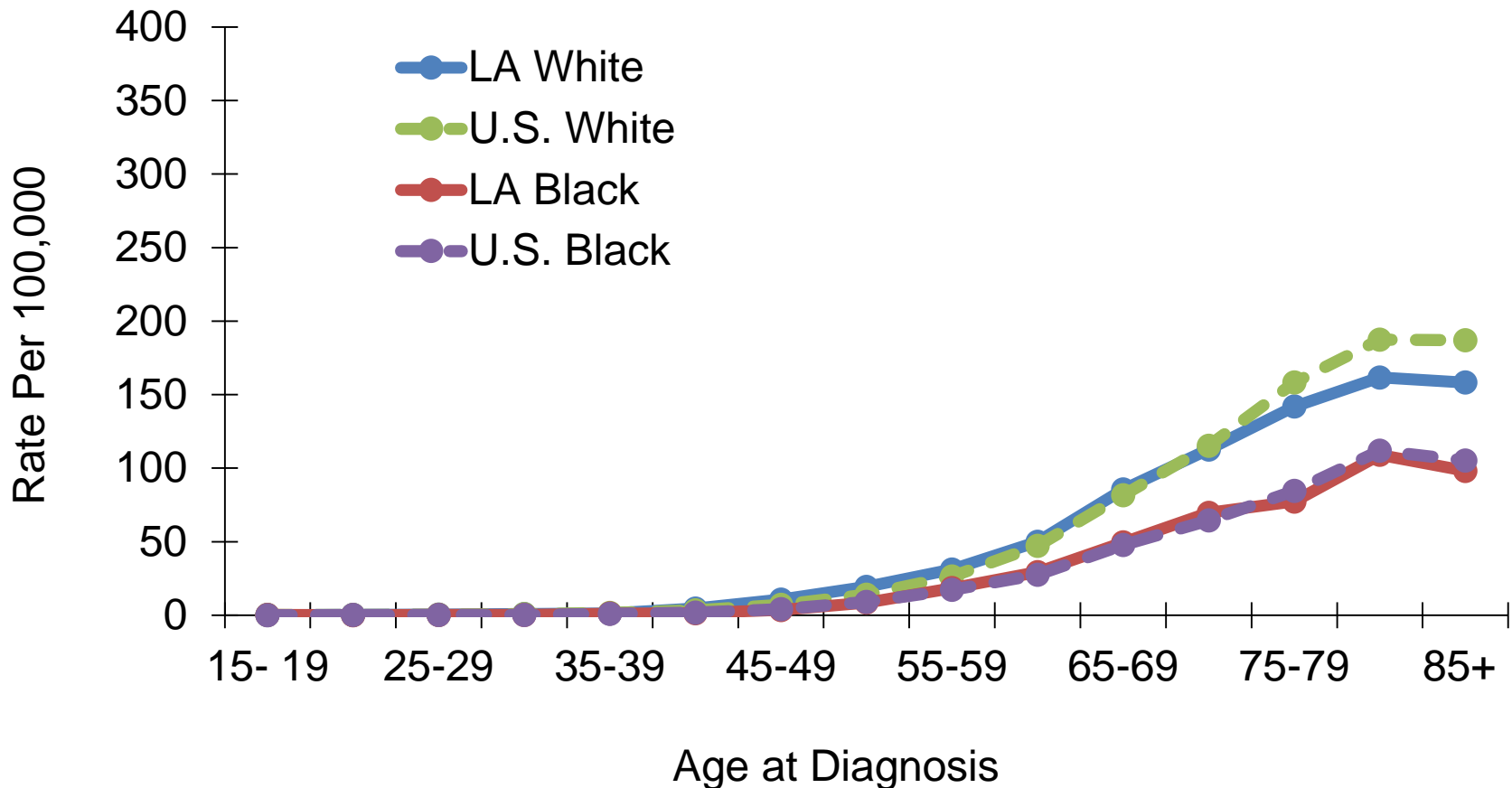
U.S. data source: 18 SEER registries.

# Urinary Bladder Cancer : Age-Specific Incidence Rates by Gender, 2009-2013



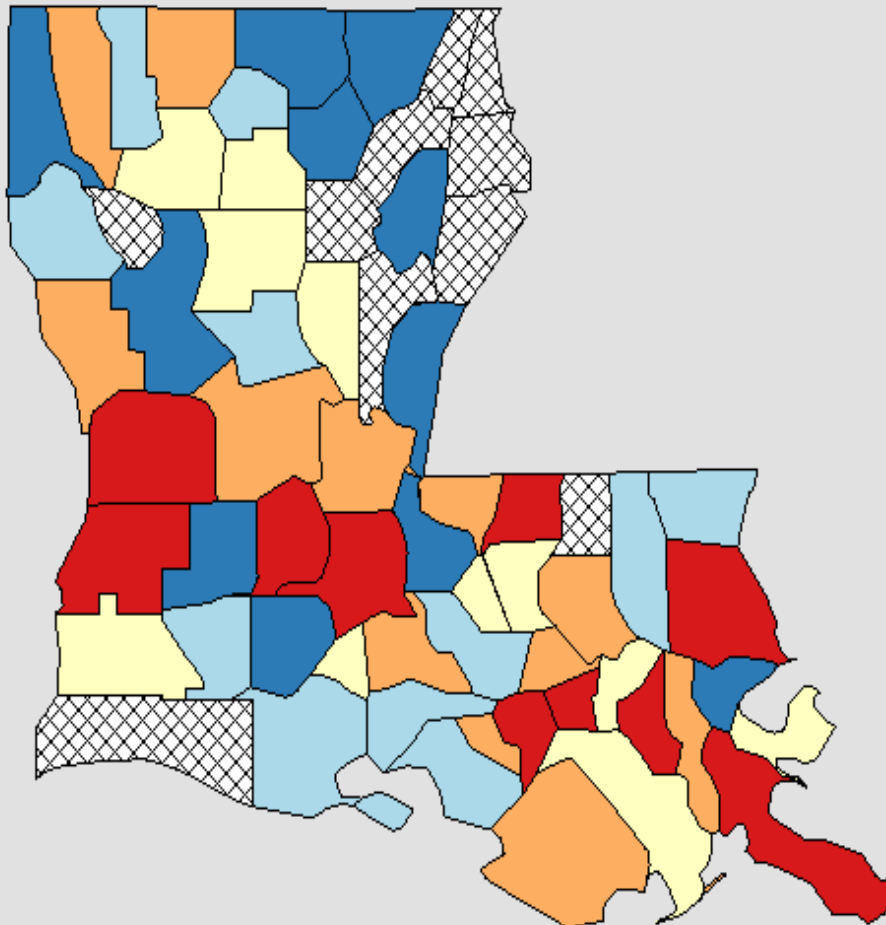
U.S. data source: 18 SEER registries.

# Urinary Bladder Cancer : Age-Specific Incidence Rates by Race, 2009-2013



U.S. data source: 18 SEER registries.

# Incidence Rates of Urinary Bladder Cancer in LA All Races, Both Sexes, 2009-2013



Age-Adjusted  
Annual Incidence Rate  
(Cases per 100,000)

[Quantile Interval](#)

- 13.4 to 16.5
- 16.5 to 18.5
- 18.5 to 20.0
- 20.0 to 21.9
- 21.9 to 30.2

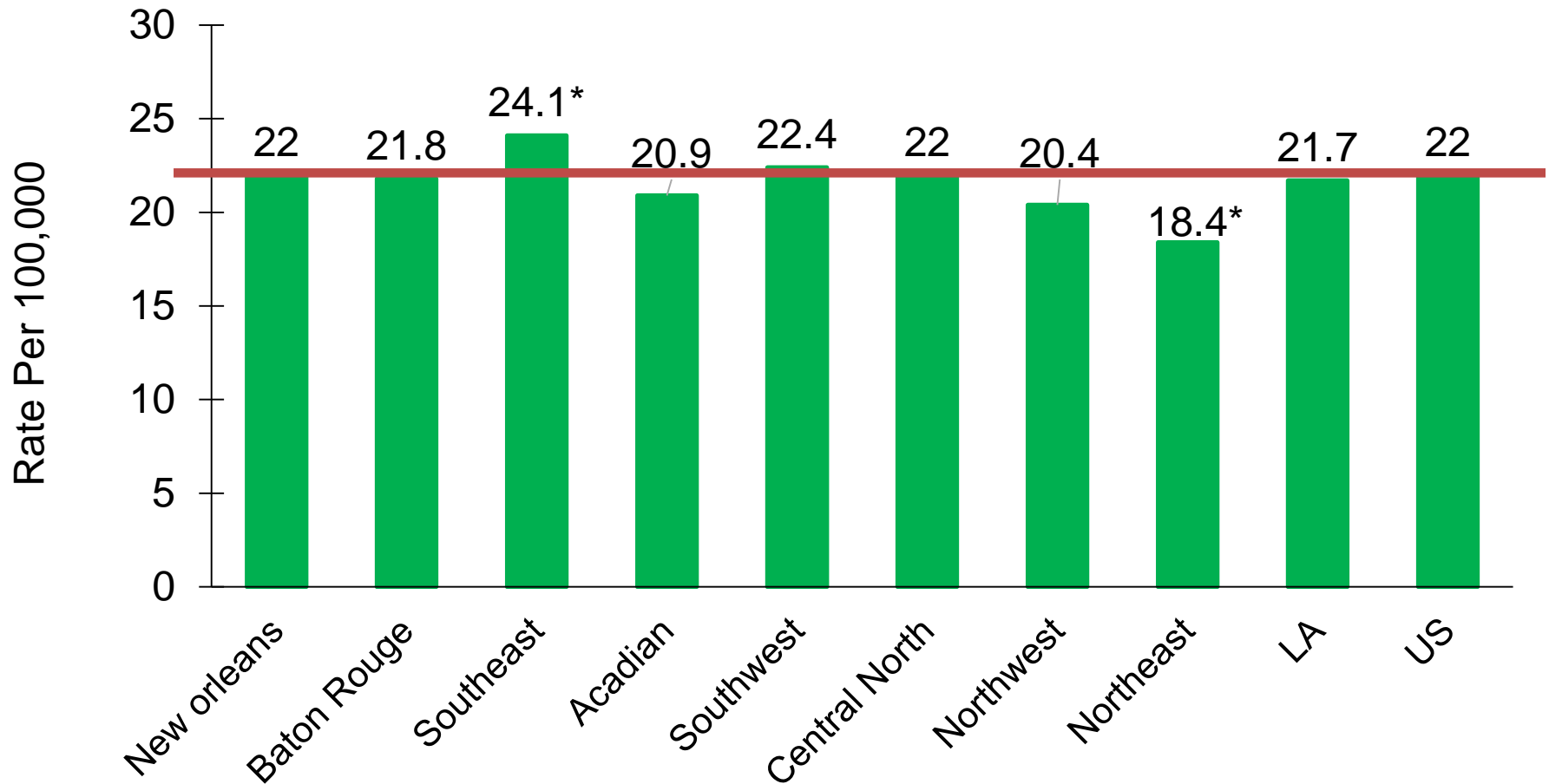
Suppressed \* / \*\*

US (SEER + NPCR)  
Rate (95% C.I.)  
20.7 (20.6 - 20.7)

Louisiana  
Rate (95% C.I.)  
19.2 (18.7 - 19.8)



# Urinary Bladder Cancer Incidence Rates<sup>1,2</sup> by Region: Louisiana, Whites, 2009-2013

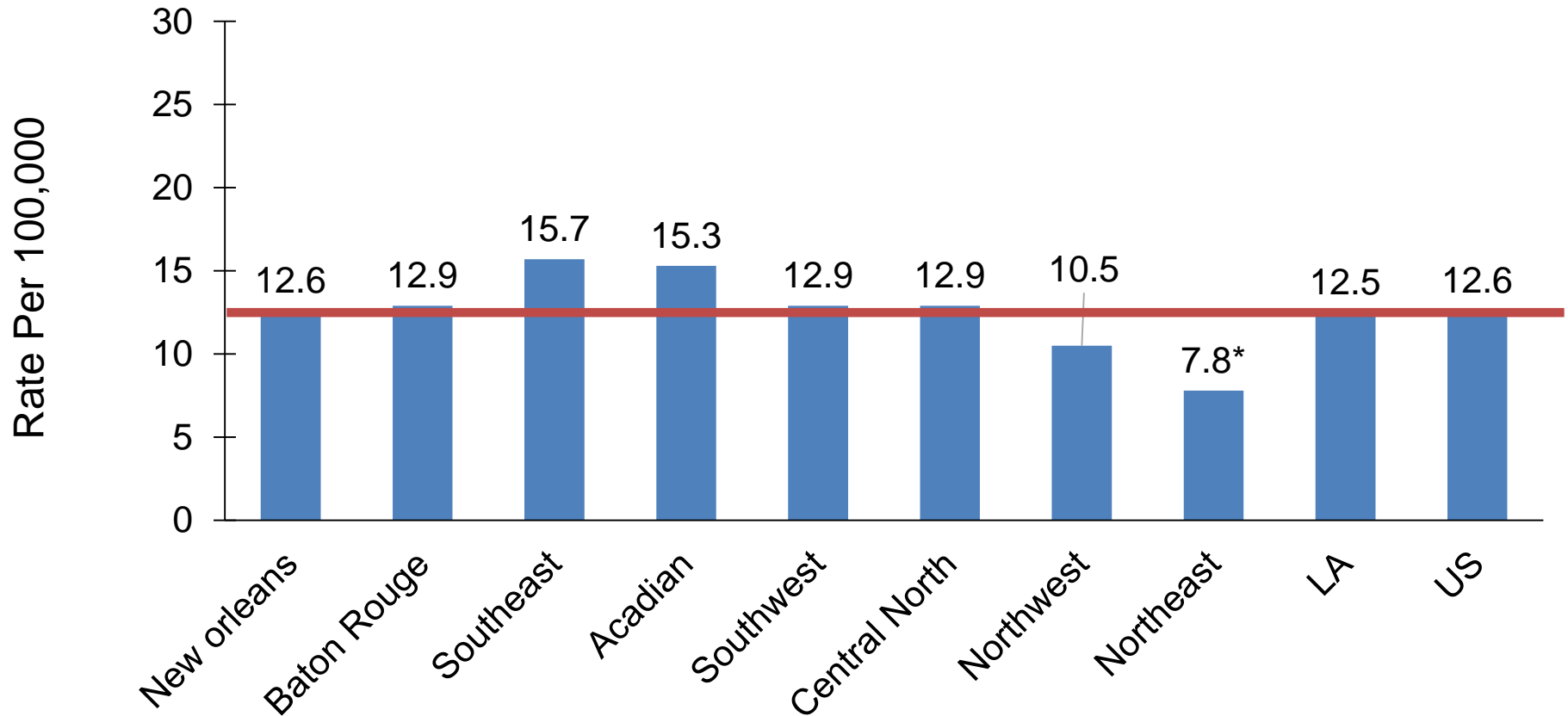


<sup>1</sup> Age-adjusted to the 2000 U.S. standard population.

<sup>2</sup> Data source for the U.S. was the 18 SEER registries.

\* Incidence rate of regions/Louisiana is significantly different from that of the U.S.

# Urinary Bladder Cancer Incidence Rates<sup>1,2</sup> by Region Louisiana, Blacks, 2009-2013

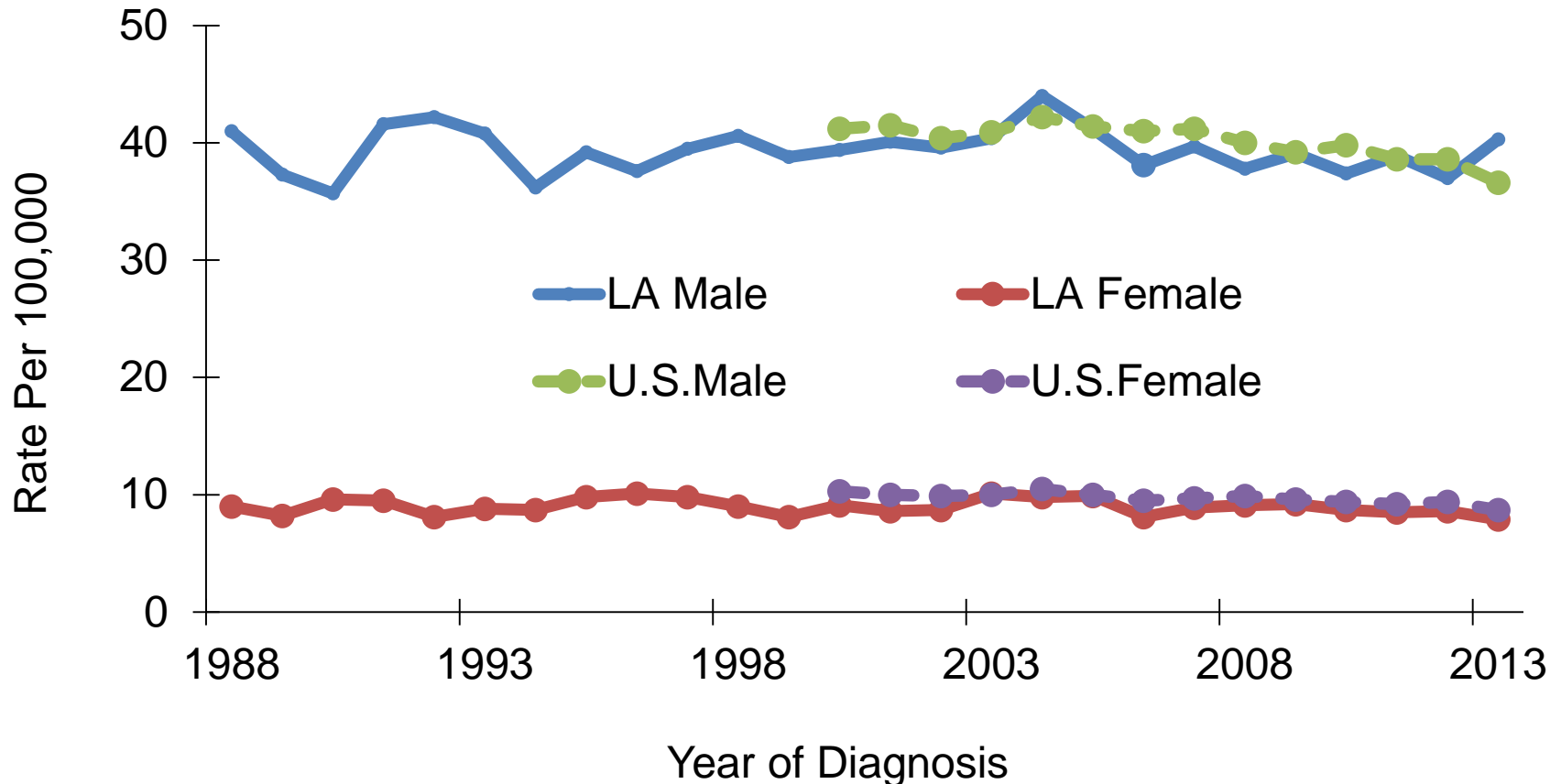


<sup>1</sup> Age-adjusted to the 2000 U.S. standard population.

<sup>2</sup> Data source for the U.S. was the 18 SEER registries.

\* Incidence rate of regions/Louisiana is significantly different from that of the U.S.

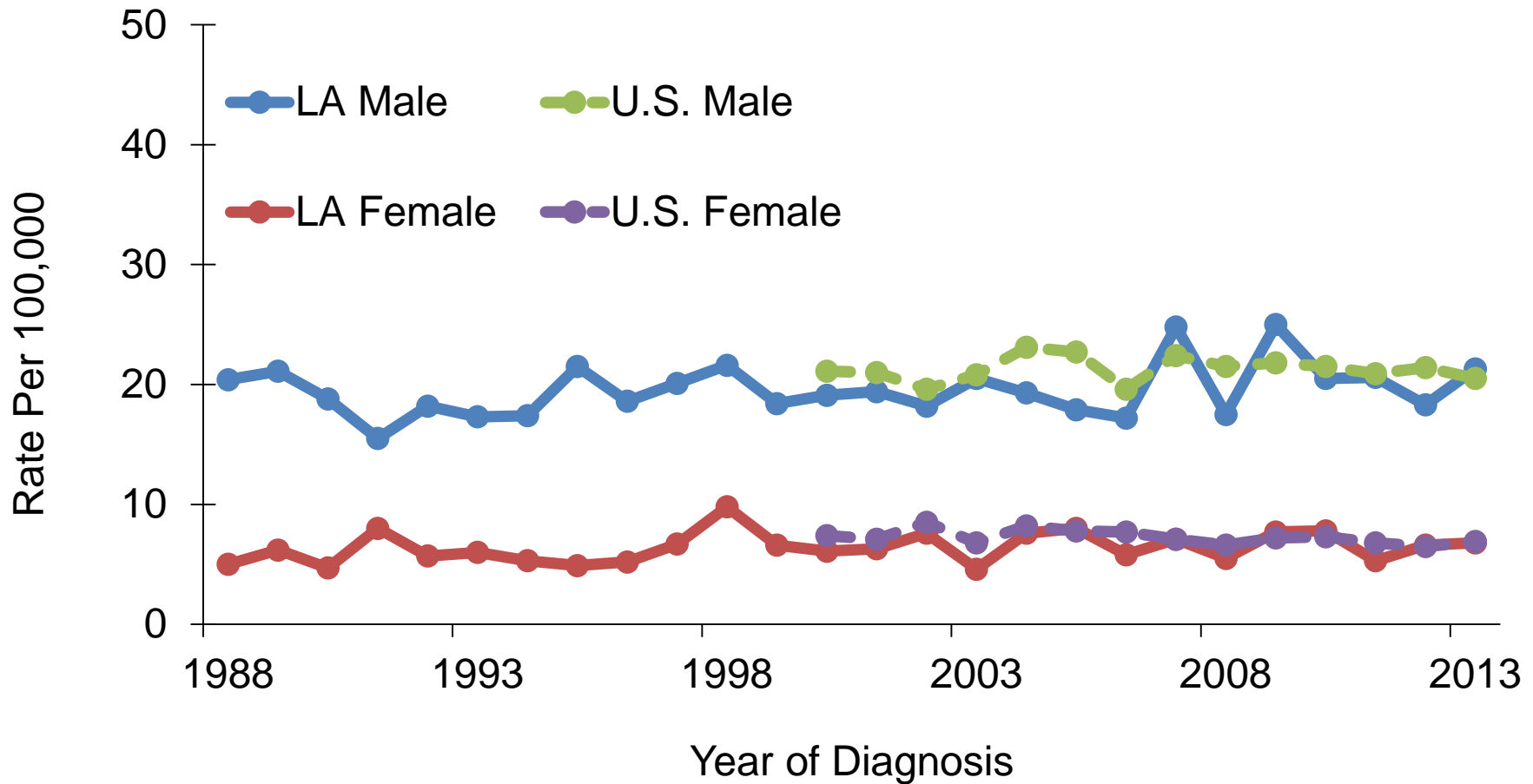
# Urinary Bladder Cancer: Trends of Incidence Rates<sup>1,2</sup>, Whites, 1988-2013



<sup>1</sup> Age-adjusted to the 2000 U.S. standard population.

<sup>2</sup> U.S. data source: 18 SEER registries.

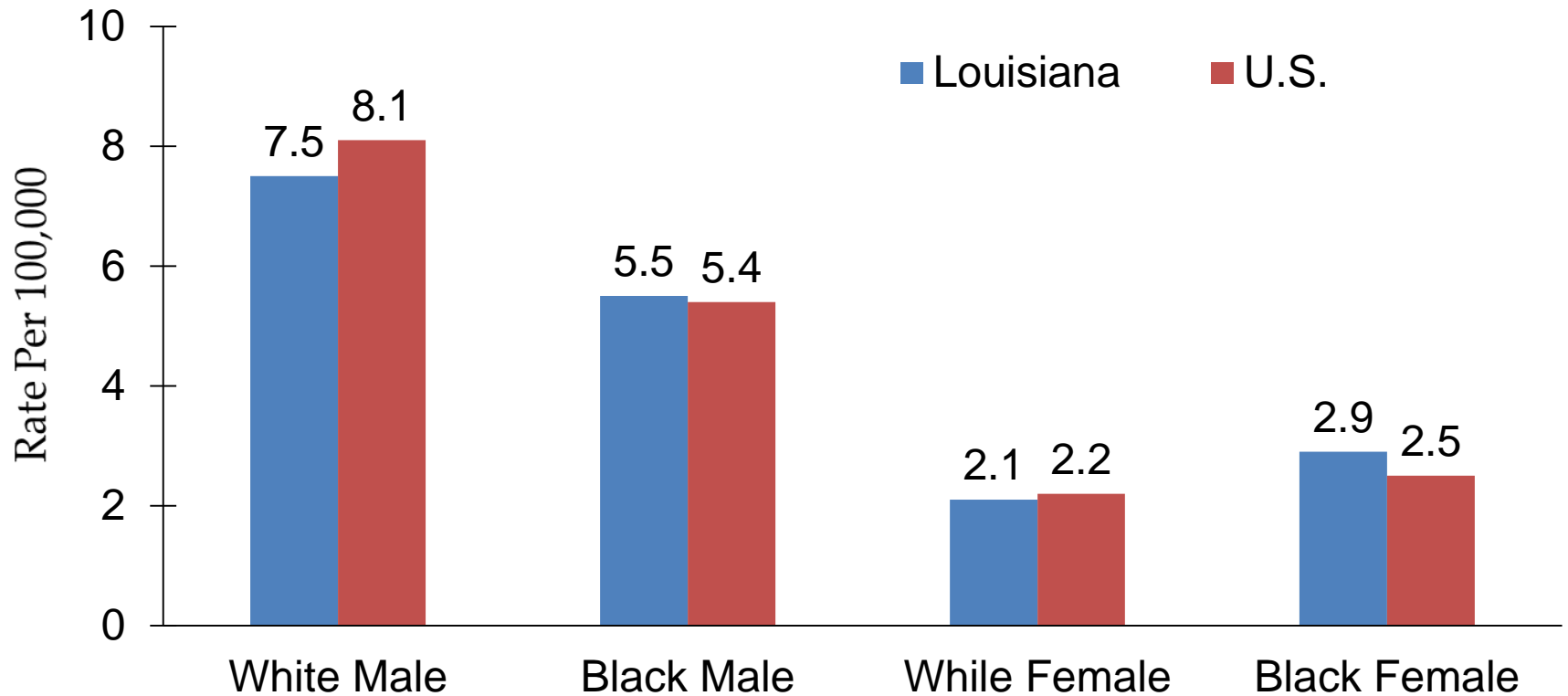
# Urinary Bladder Cancer: Trends of Incidence Rates<sup>1,2</sup>, Blacks, 1988-2013



<sup>1</sup> Age-adjusted to the 2000 U.S. standard population.

<sup>2</sup> U.S. data source: 18 SEER registries.

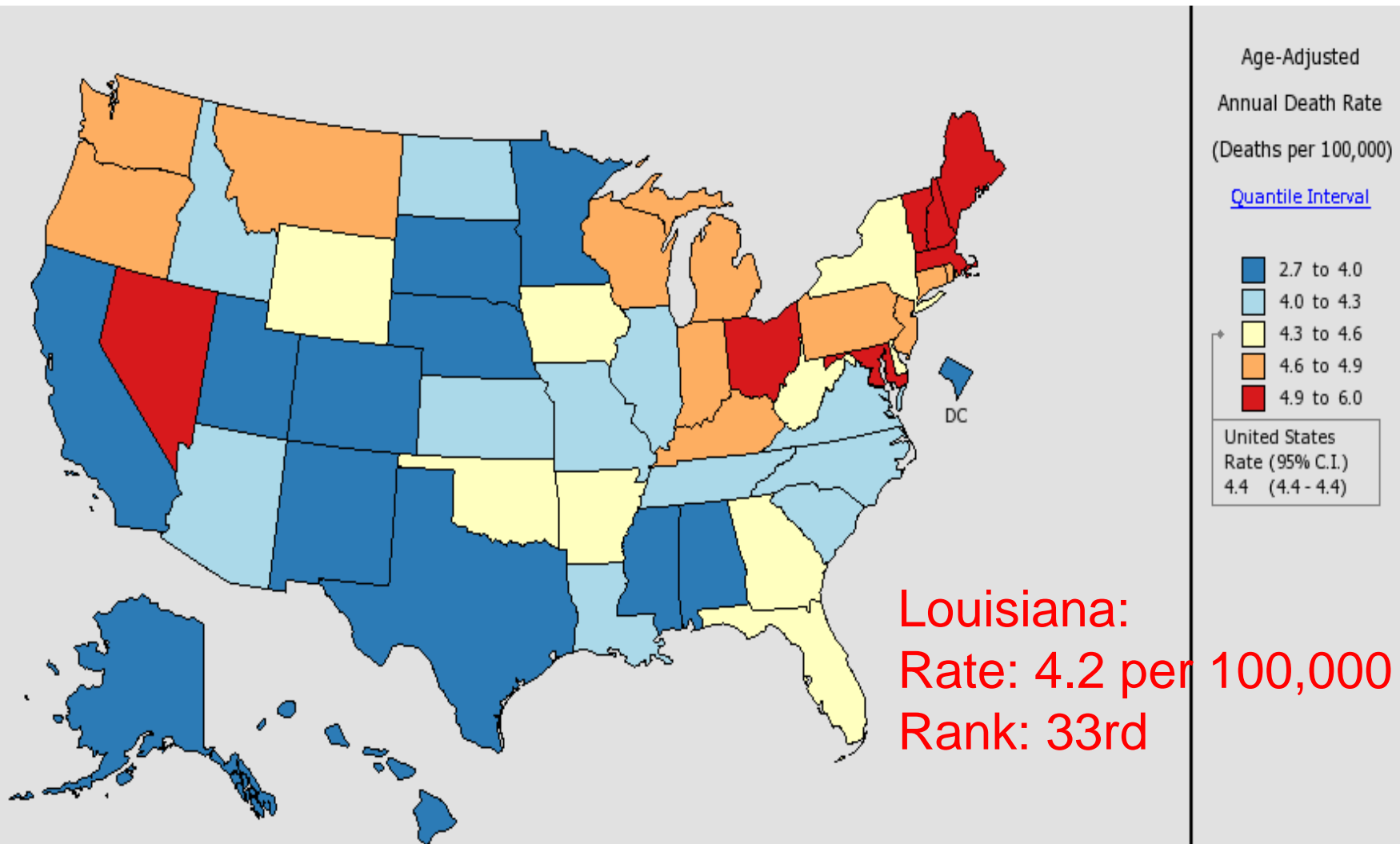
# Urinary Bladder Cancer: Mortality Rates<sup>1</sup>, Louisiana vs. U.S.<sup>2</sup>, 2009-2013



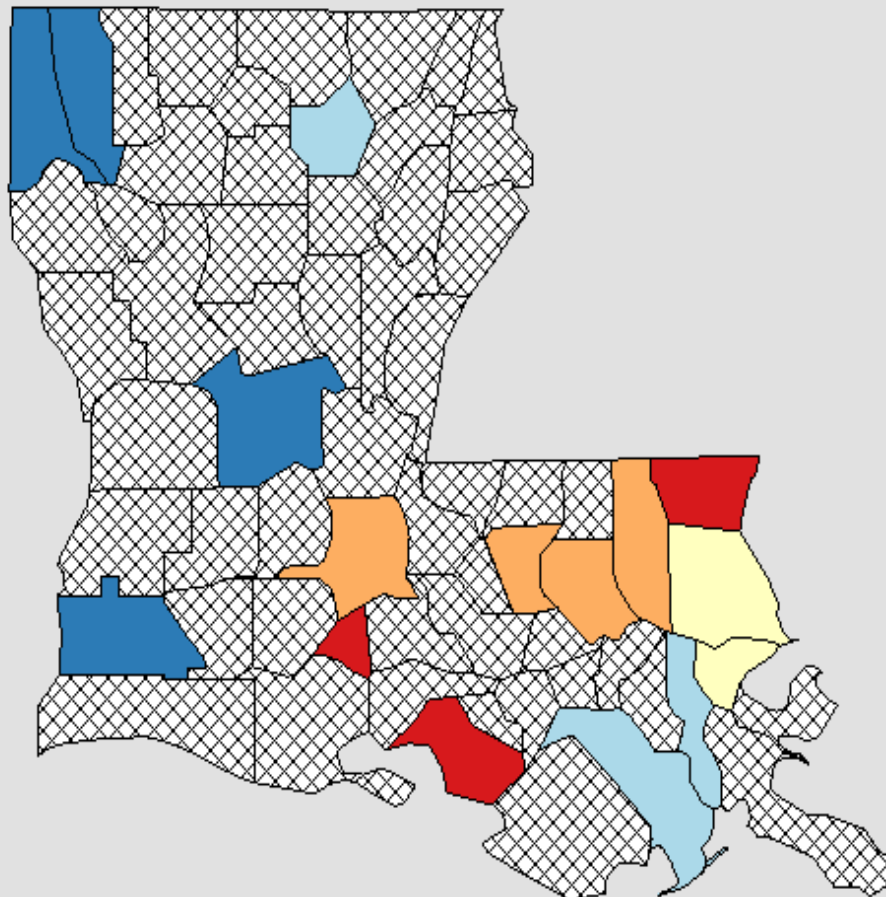
<sup>1</sup> Age-adjusted to the 2000 U.S. standard population.

<sup>2</sup> Data source: National Center of Health Statistics (NCHS).

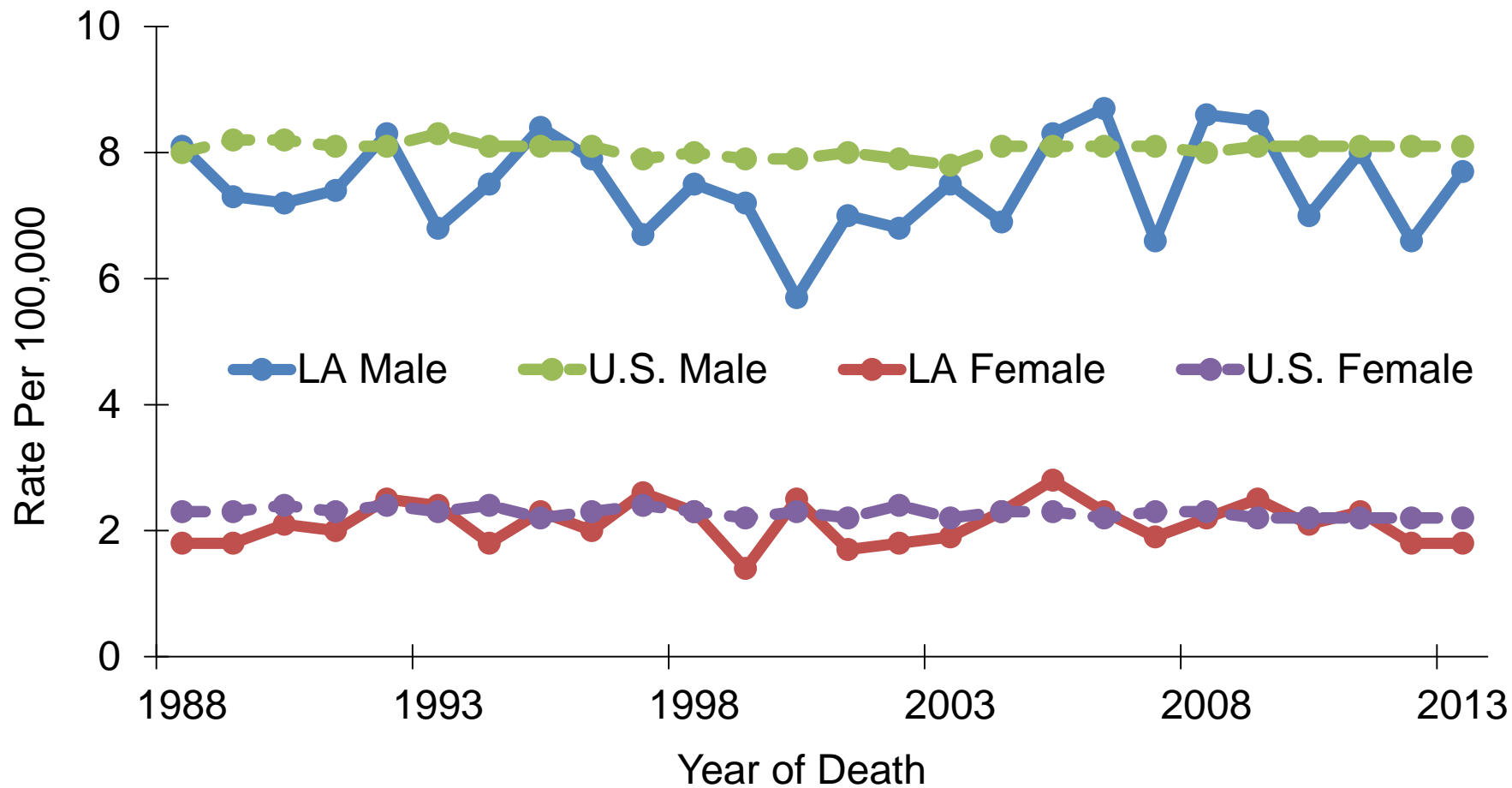
# Mortality Rates of Urinary Bladder Cancer in the U.S., All Races, Both Sexes, 2009-2013



# Mortality Rates of Urinary Bladder Cancer in LA, All Races, Both Sexes, 2009-2013



# Urinary Bladder Cancer: Trends of Mortality Rates<sup>1,2</sup>, Whites, 1988-2013

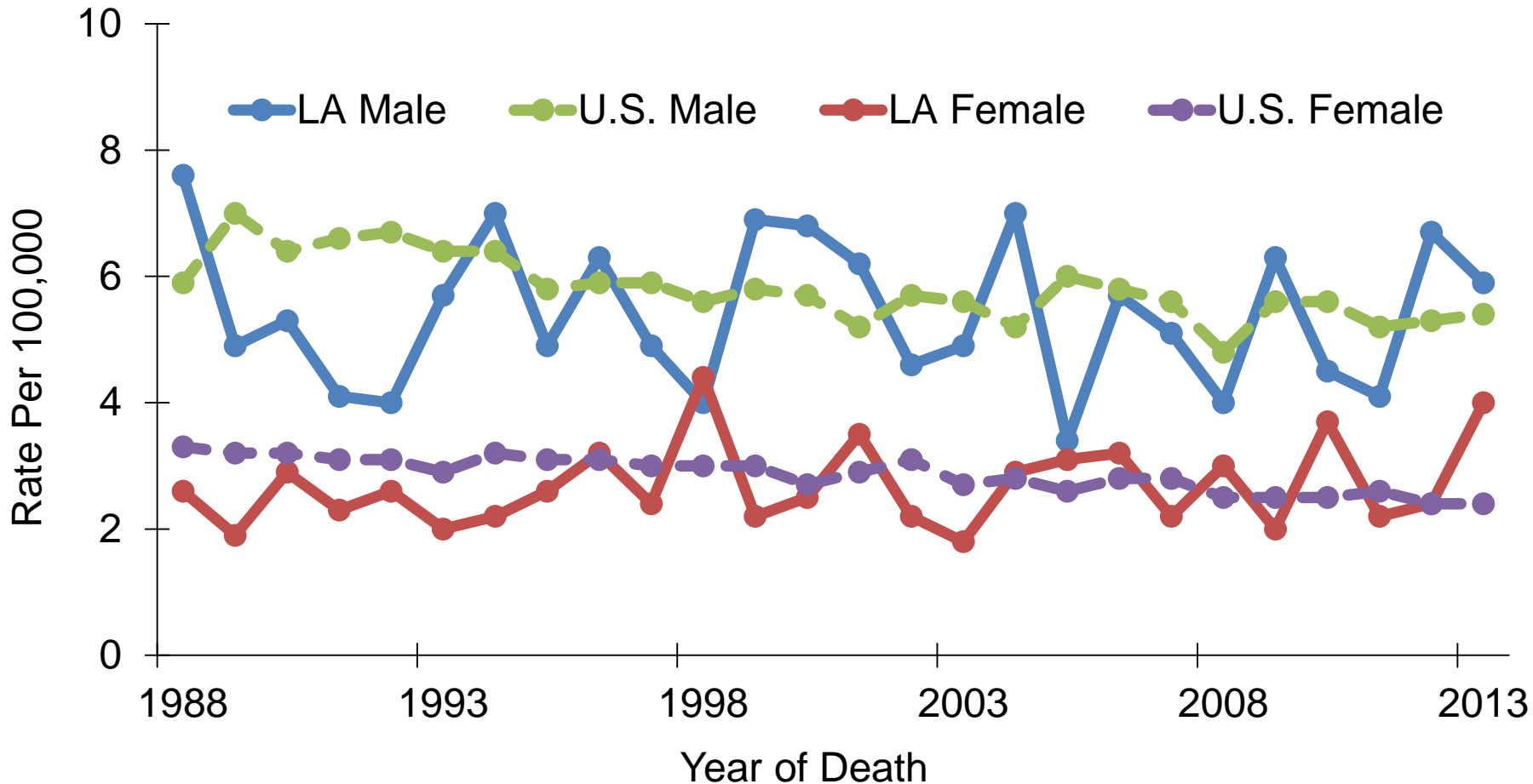


<sup>1</sup> Adjusted to the 2000 U.S. standard population.

<sup>2</sup> Data source: National Center of Health Statistics (NCHS).



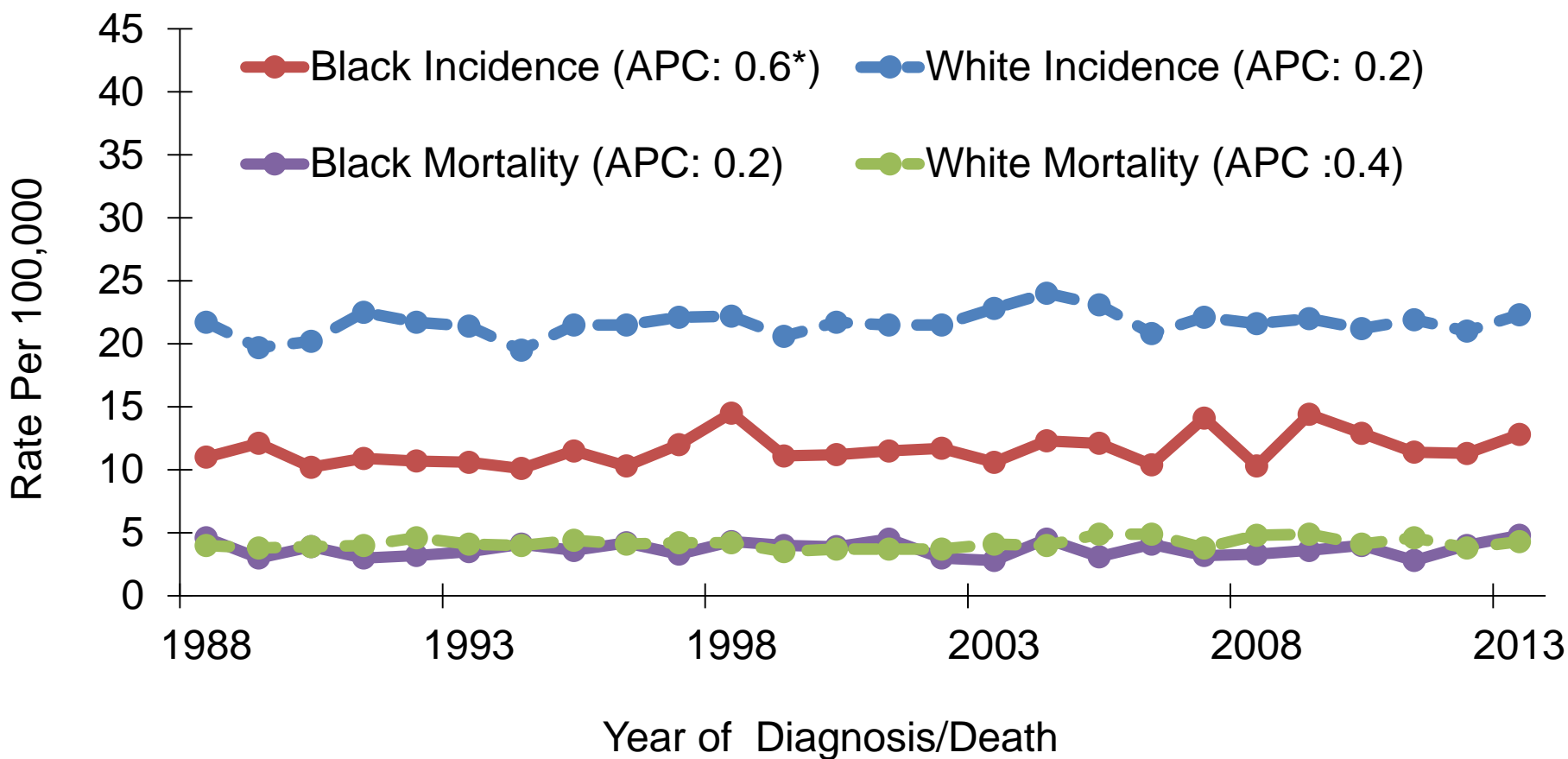
# Urinary Bladder Cancer: Trends of Mortality Rates<sup>1,2</sup>, Blacks, 1988-2013



<sup>1</sup> Age-adjusted to the 2000 U.S. standard population.

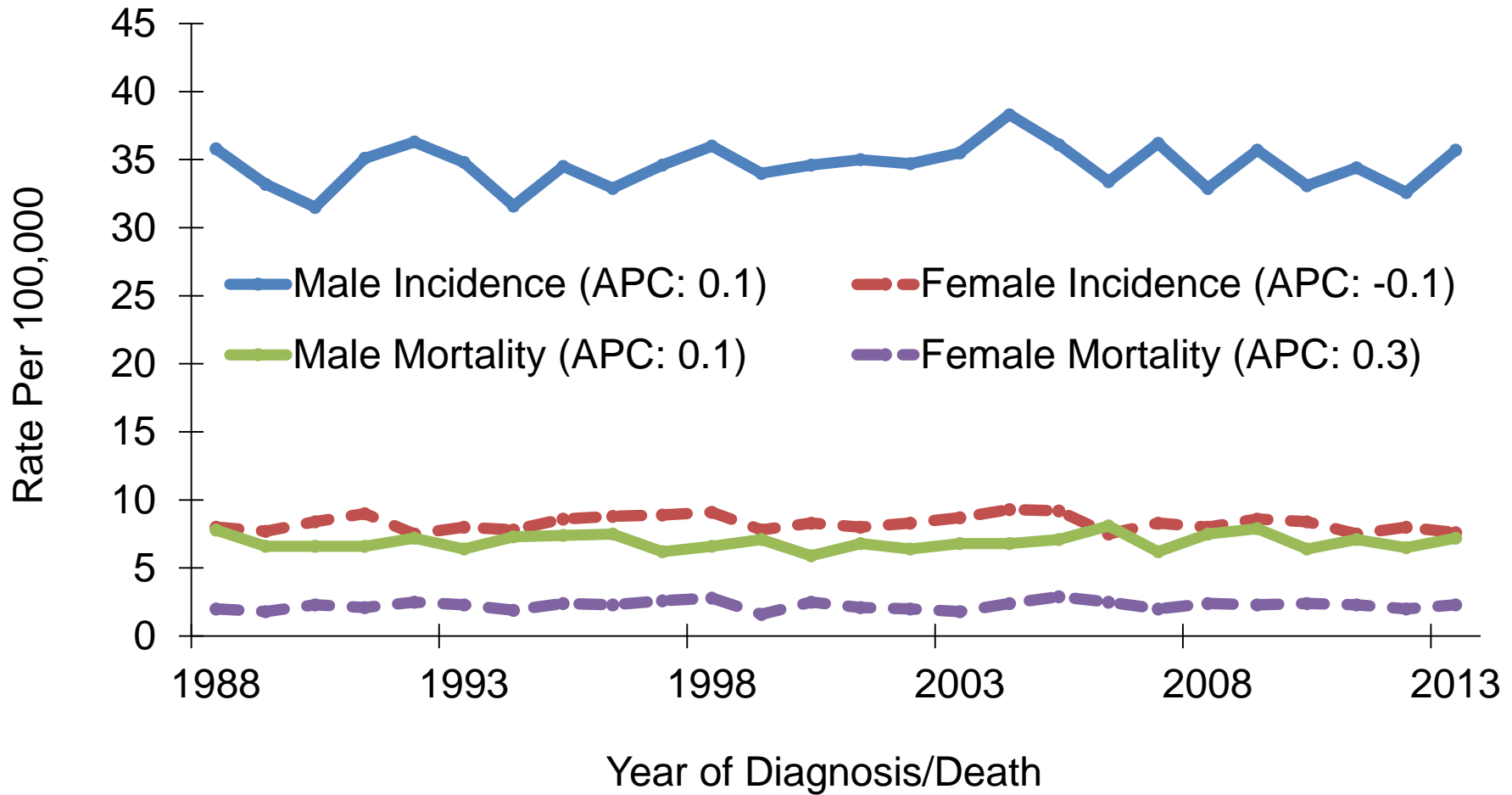
<sup>2</sup> Data source: National Center of Health Statistics (NCHS).

# Urinary Bladder Cancer: Trends of Incidence and Mortality Rates by Race, Louisiana, 1988-2013



APCs were calculated using weighted least squares method

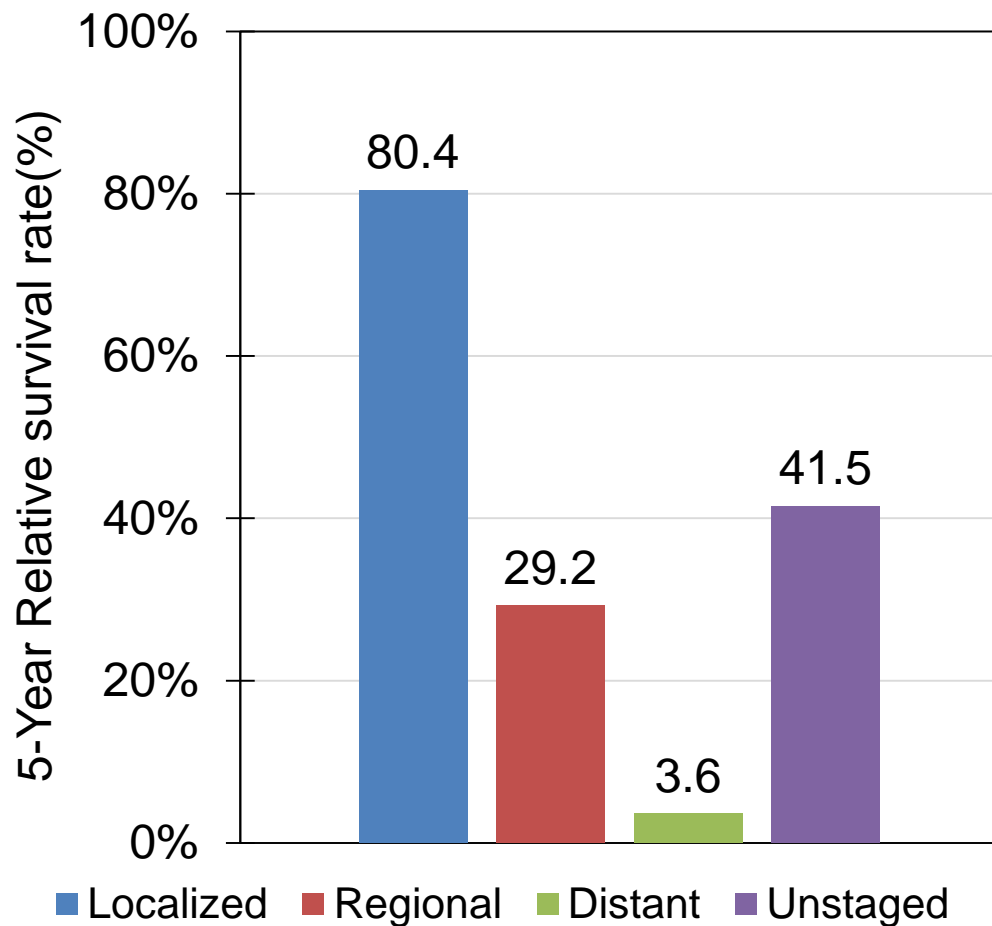
# Urinary Bladder Cancer: Trends of Incidence and Mortality Rates by Gender, Louisiana, 1988-2013



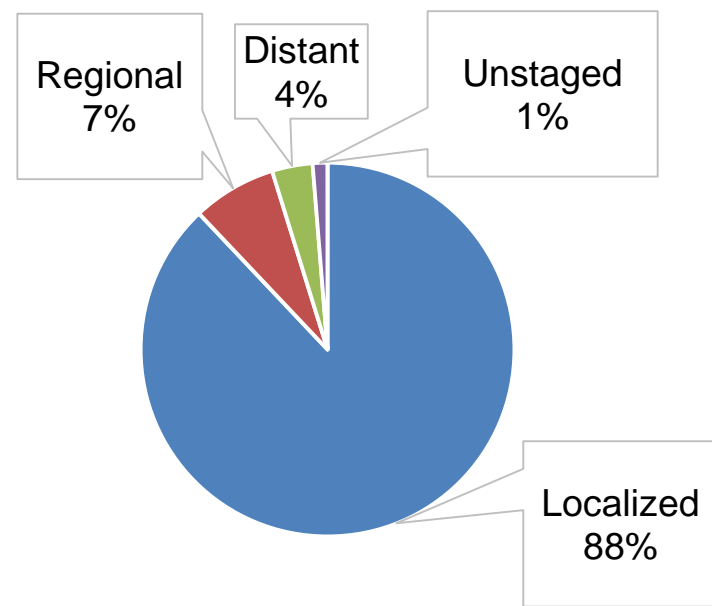
APCs were calculated using weighted least squares method

# Urinary Bladder Cancer: Louisiana

## 5-Year Relative Survival by Stage<sup>1</sup>, All Races, Both Sexes, Louisiana, 2006-2012



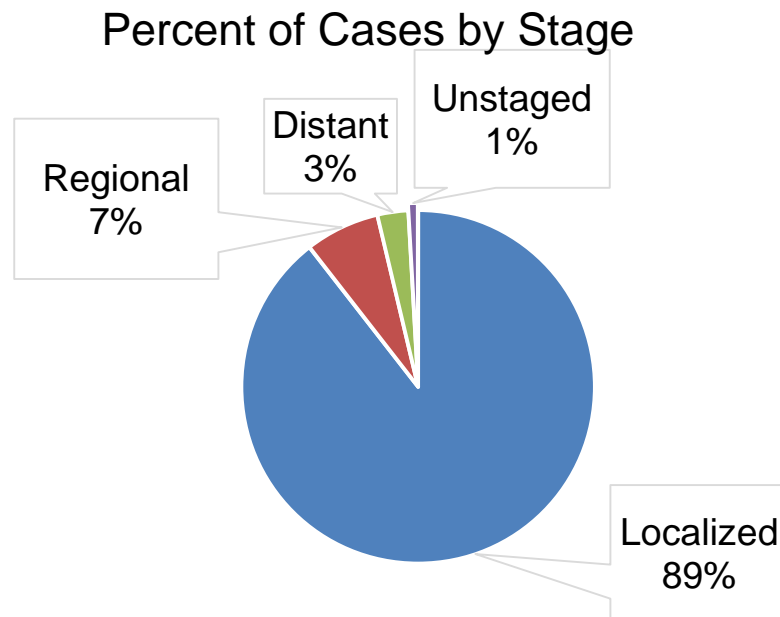
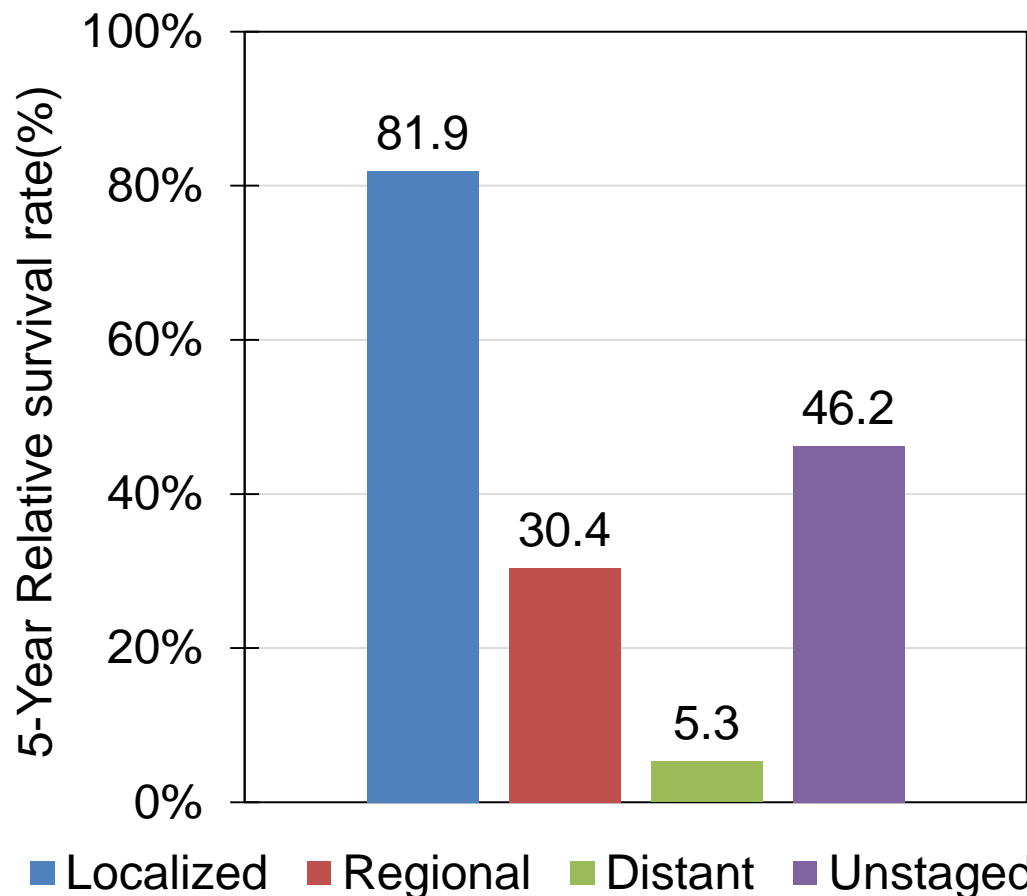
### Percent of Cases by Stage



<sup>1</sup> The stage distribution is based on Derived Summary Stage 2000.

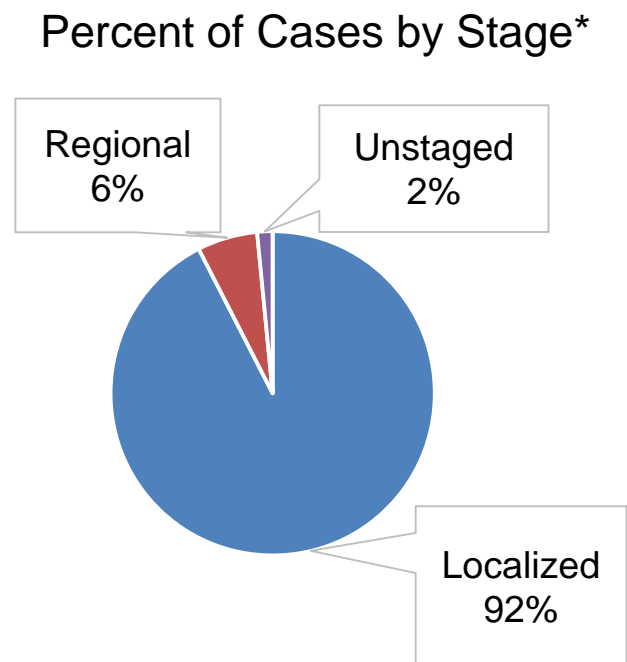
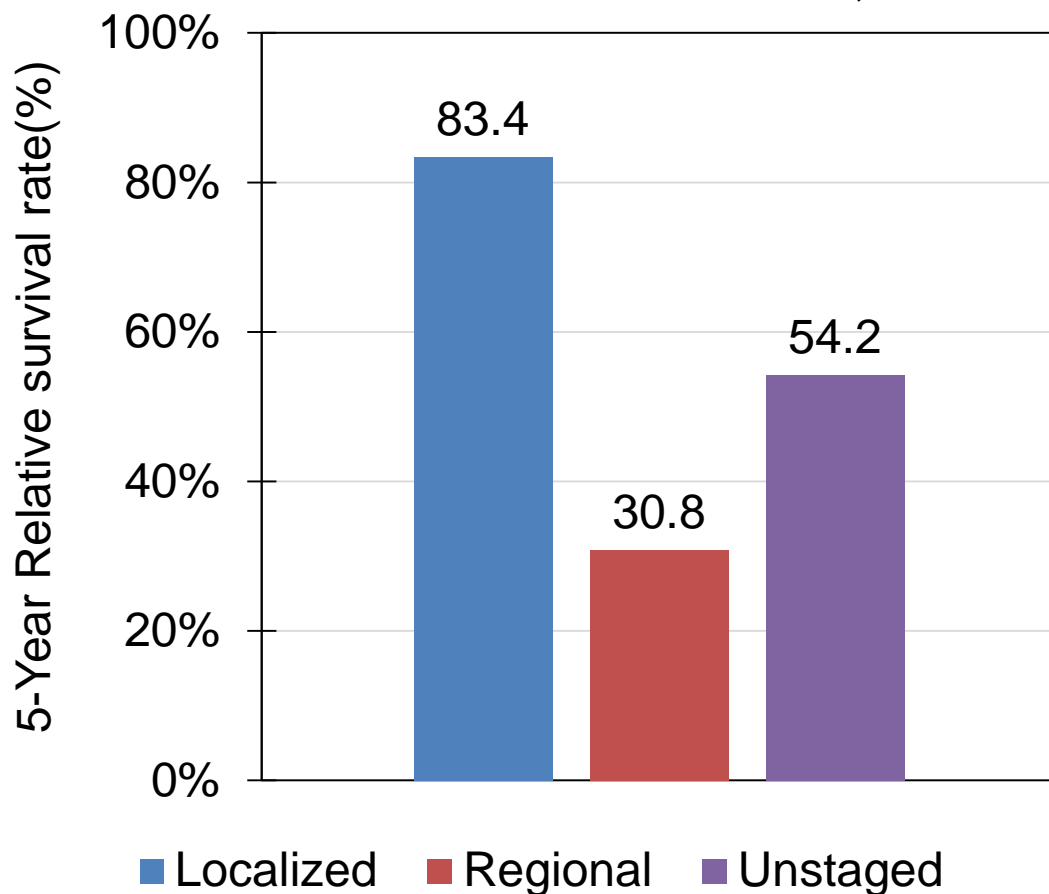
# Urinary Bladder Cancer: Louisiana

## 5-Year Relative Survival by Stage<sup>1</sup>, White Males, Louisiana, 2006-2012



<sup>1</sup> The stage distribution is based on Derived Summary Stage 2000.

# Urinary Bladder Cancer: Louisiana 5-Year Relative Survival by Stage<sup>1</sup>, White Females, Louisiana, 2006-2012

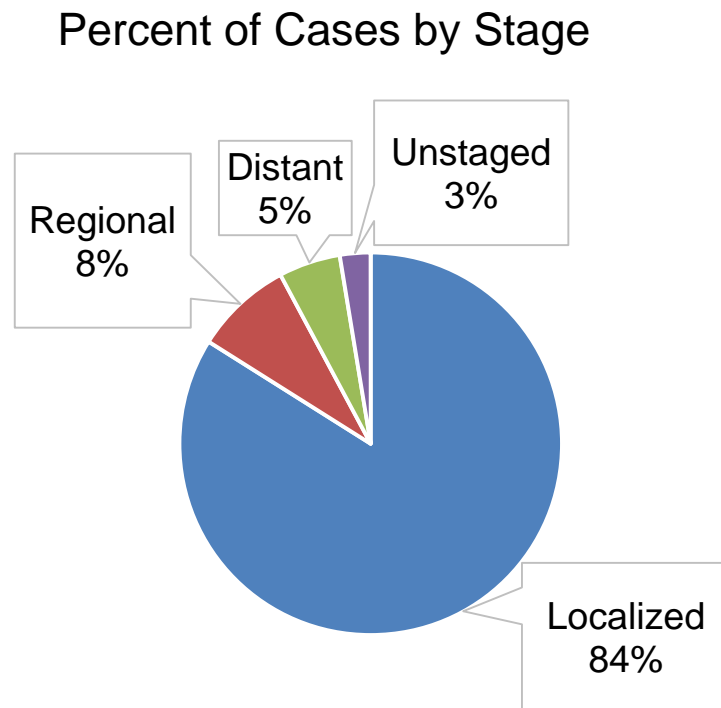
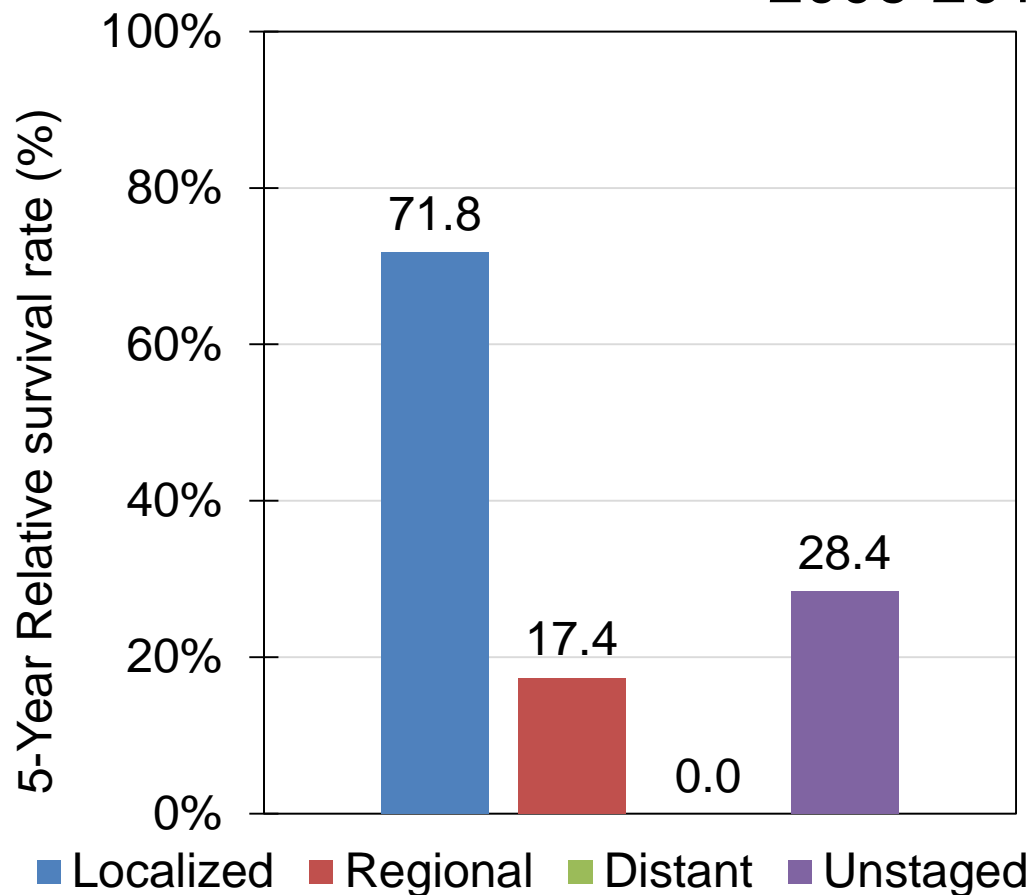


<sup>1</sup> The stage distribution is based on Derived Summary Stage 2000.

\* The survival rate of distant stage cases could not be calculated due to small case counts.

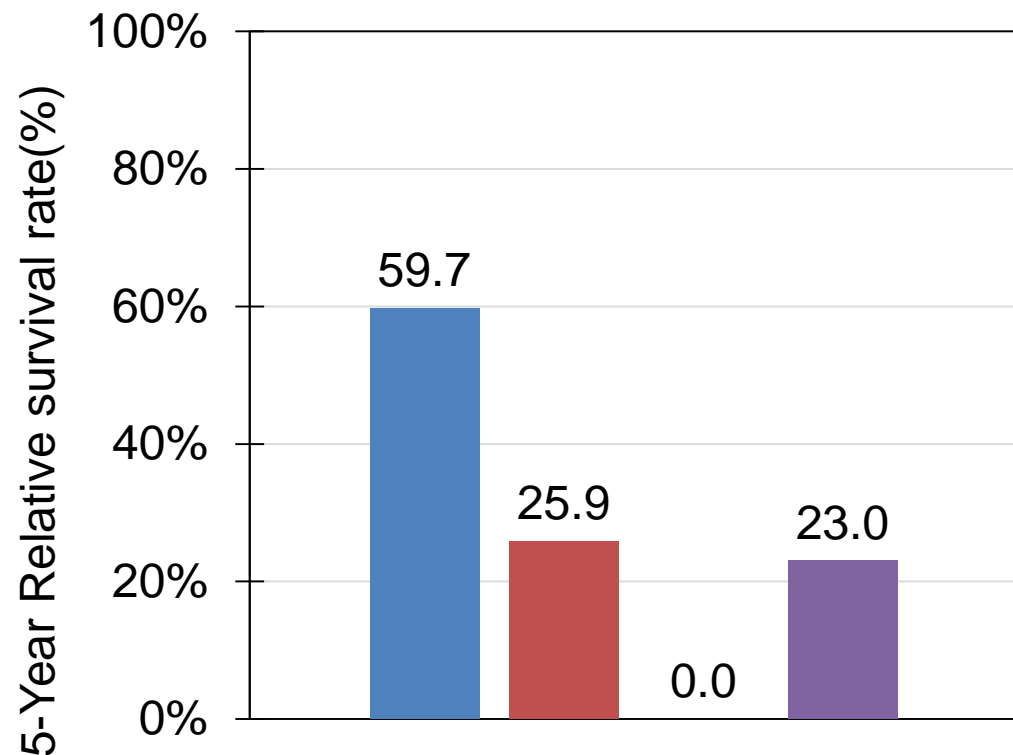
# Urinary Bladder Cancer: Louisiana

## 5-Year Relative Survival by Stage<sup>1</sup>, Black Males, Louisiana, 2006-2012

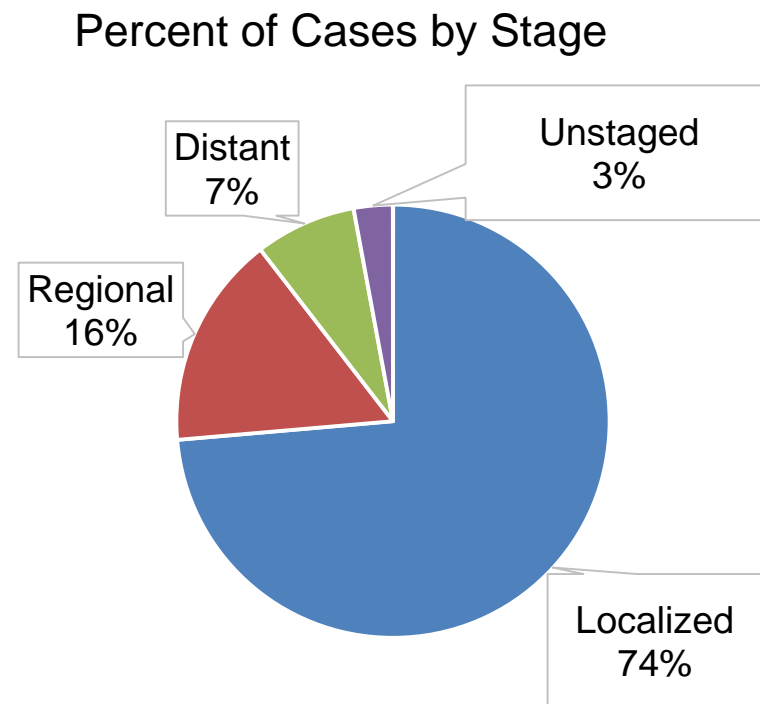


<sup>1</sup> The stage distribution is based on Derived Summary Stage 2000.

# Urinary Bladder Cancer: Louisiana 5-Year Relative Survival by Stage<sup>1</sup>, Black Females, Louisiana, 2006-2012



■ Localized ■ Regional ■ Distant ■ Unstaged



<sup>1</sup> The stage distribution is based on Derived Summary Stage 2000.



# Data Sources

**Surveillance, Epidemiology, and End Results (SEER) Program** ([www.seer.cancer.gov](http://www.seer.cancer.gov)) SEER\*Stat Databases, National Cancer Institute, DCCPS, Surveillance Research Program, Surveillance Systems Branch, released April 2016, based on the November 2015 submission.

## **For Incidence:**

- Incidence - SEER 18 Regs Research Data + Hurricane Katrina Impacted Louisiana Cases, Nov 2015 Sub (2000-2013) <Katrina/Rita Population Adjustment>
- SEER\*DMS - LTR 1988-2013, June 7, 2016

## **For Mortality:**

- mortality – all COD, aggregated with States, Total U.S. (1969-2013) <Katrina/Rita Population Adjustment>

## **For Survival:**

- Incidence - SEER 18 Regs Research Data + Hurricane Katrina Impacted Louisiana Cases, Nov 2015 Sub (1973-2013 varying)

# Acknowledgements

- **Hospital cancer registries** (<http://louisianatumorregistry.lsuhs.edu/>)
- **Louisiana Cancer Registrars' Association** (<http://www.lcra-usa.org/>)
- **Physicians and staff members in:**
  - Medical records offices
  - Pathology laboratories
  - Physician offices and clinics
  - Hospice programs and nursing homes
- **Regional and central offices of the Louisiana Tumor Registry**  
(<http://louisianatumorregistry.lsuhs.edu/regionalregistries.html>)
- **School of Public Health, LSU Health Sciences Center–New Orleans**
- **Louisiana Cancer and Lung Trust Fund Board**
- **Coroners' offices**

# Sources of LTR Funding

- National Cancer Institute, SEER Program
- National Program of Cancer Registries, CDC
- Louisiana Health Care Services Division

# Editors

Shuang Yang, MPH

Meichin Hsieh, PhD, MSPH, CTR

Lauren Maniscalco, MPH

Xiaocheng Wu, MD, MPH, CTR

# Contributors

Xiangrong Li, MD, MSPH

Brent Mumphrey, BS

Tina Lefante, MPH

Lisa Pareti, BS, RHIT, CTR

Yong Yi, PhD, MS

# Questions?

Contact:

[LTR-info@lsuhsc.edu](mailto:LTR-info@lsuhsc.edu)

or

504-568-5757