

Louisiana Cancer Facts & Figures, Thyroid Cancer

Louisiana Tumor Registry

January 5, 2016

Thyroid Cancer*

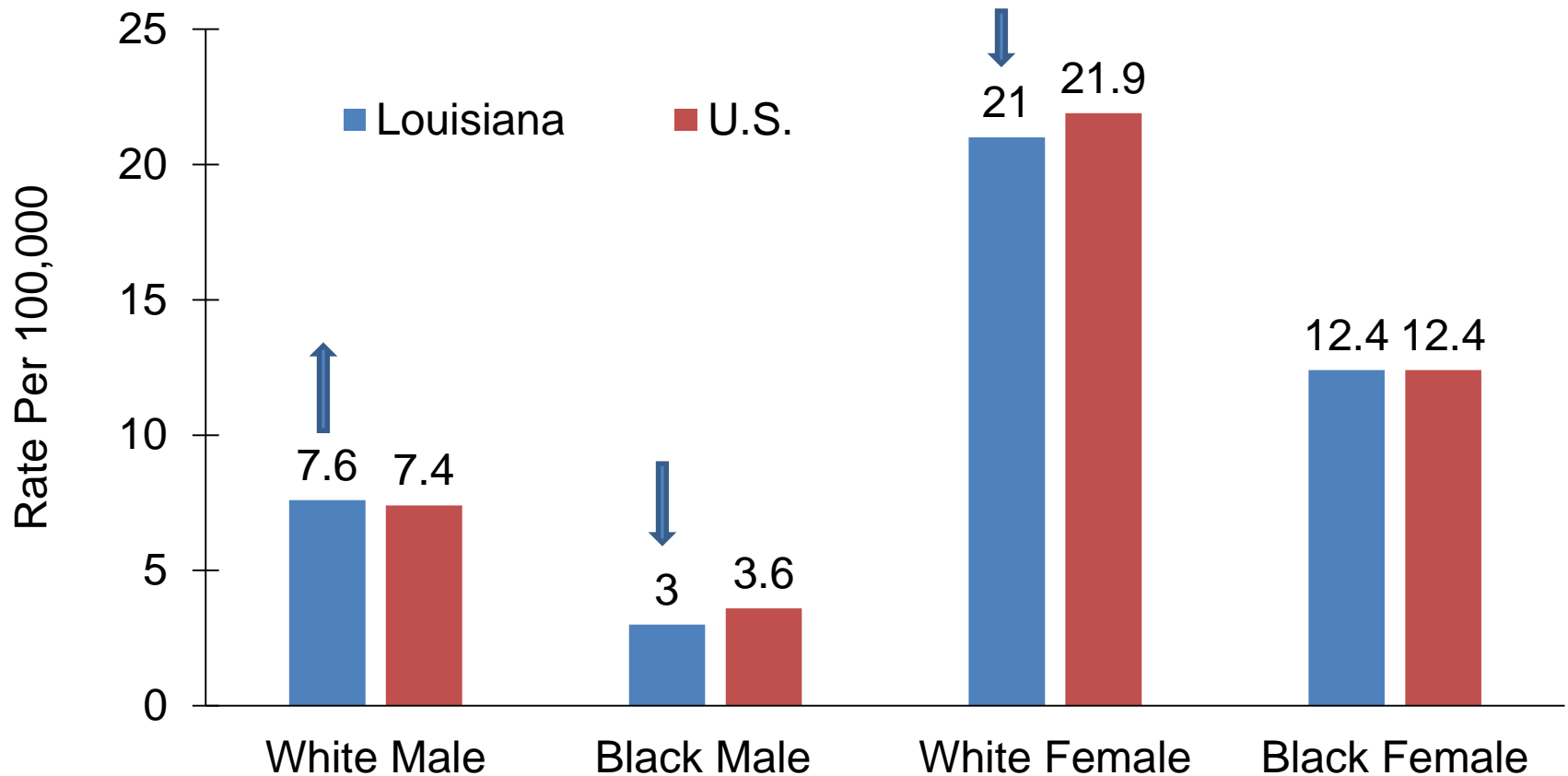
- Thyroid cancer was the 13th most commonly diagnosed cancer in Louisiana, and the 10th in the U.S. ¹
- It was the 22nd leading cause of cancer death in Louisiana and the 21st in the U.S. ¹
- About 650 new thyroid cancer cases are expected to be diagnosed in Louisiana in 2017.²

¹ Data source: Centers for Disease Control and Prevention

² Data source: American Cancer Society, Cancer Facts & Figures 2017

* ICD_O_3/WHO 2008 code:C739; excluding ICD-O-3 histology (type): 9050-9055, 9140, 9590-9992

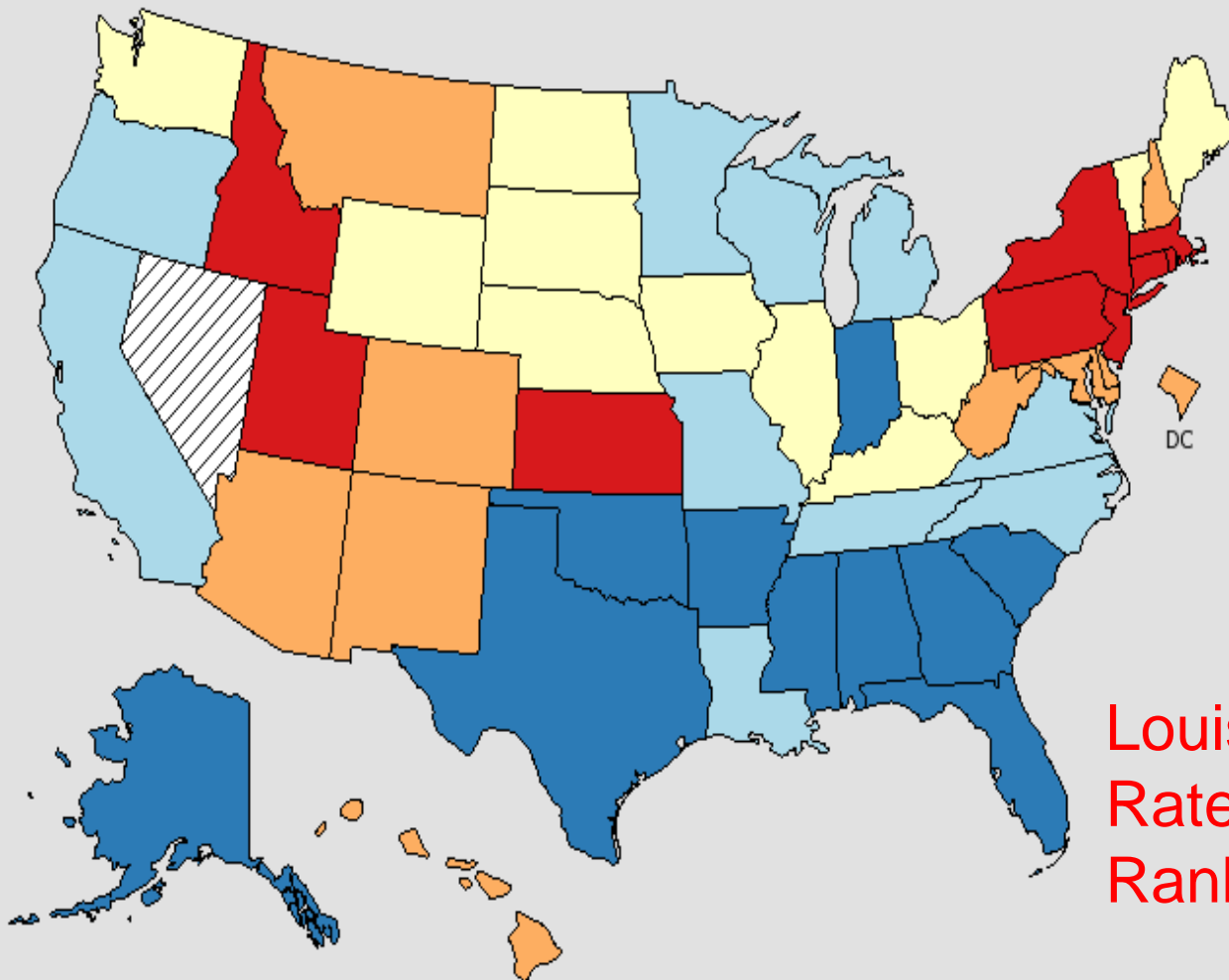
Thyroid Cancer Incidence Rates¹ Louisiana vs. U.S.,² 2009-2013



1 Age-adjusted to the 2000 U.S. standard population.

2 Incidence data source: 18 SEER registries.

Incidence Rates of Thyroid Cancer in the U.S., All Races, Both Sexes, 2009-2013



Age-Adjusted
Annual Incidence Rate
(Cases per 100,000)

[Quantile Interval](#)

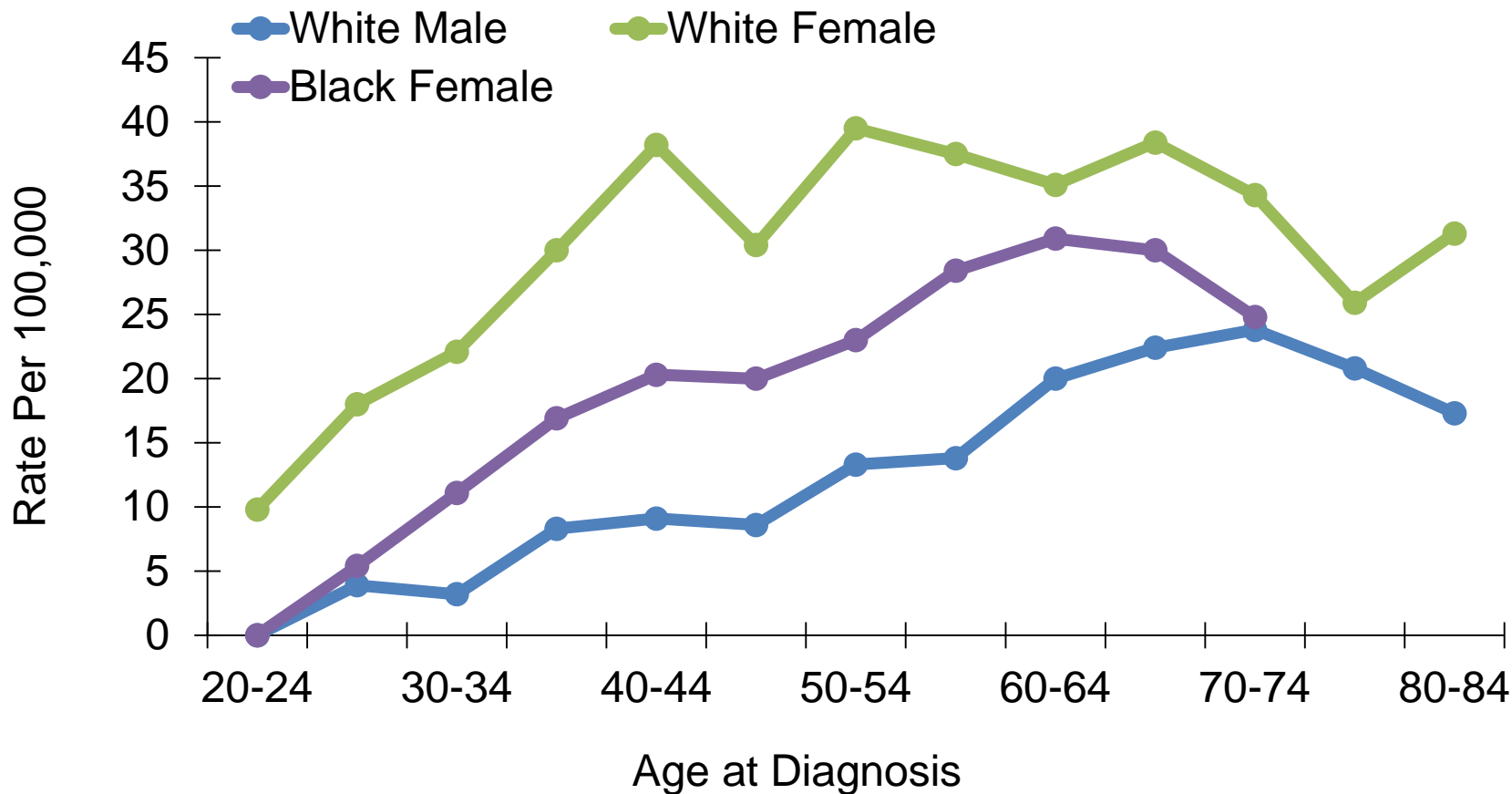
- 8.7 to 12.2
- 12.2 to 13.1
- 13.1 to 14.4
- 14.4 to 15.9
- 15.9 to 20.7

▨ Data Not Available ◇

US (SEER + NPCR)
Rate (95% C.I.)
14.0 (14.0 - 14.1)

Louisiana:
Rate: 12.4 per 100,000
Rank: 38th

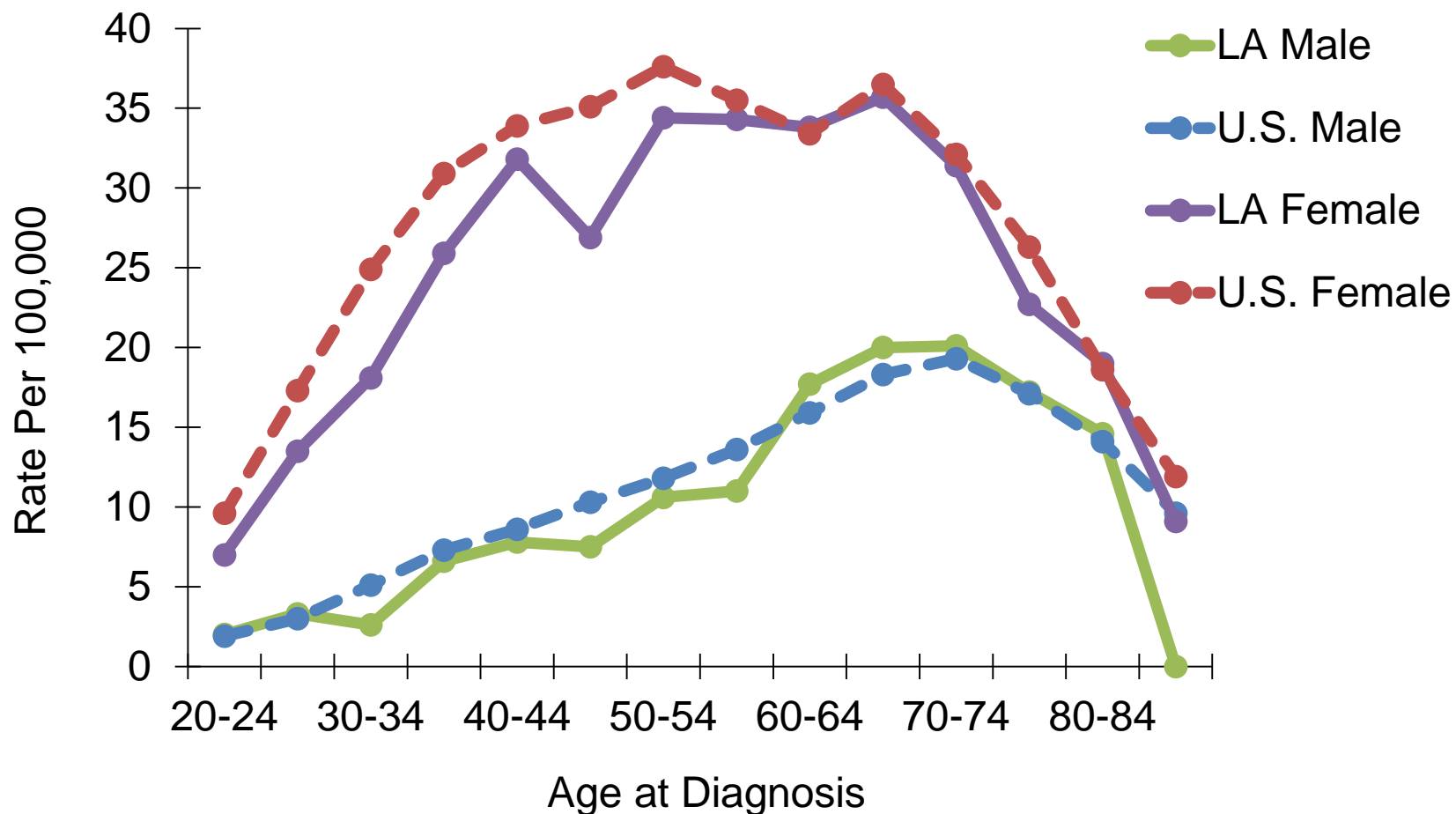
Thyroid Cancer: Age-Specific Incidence Rates, Louisiana*, 2009-2013



U.S. data source: 18 SEER registries.

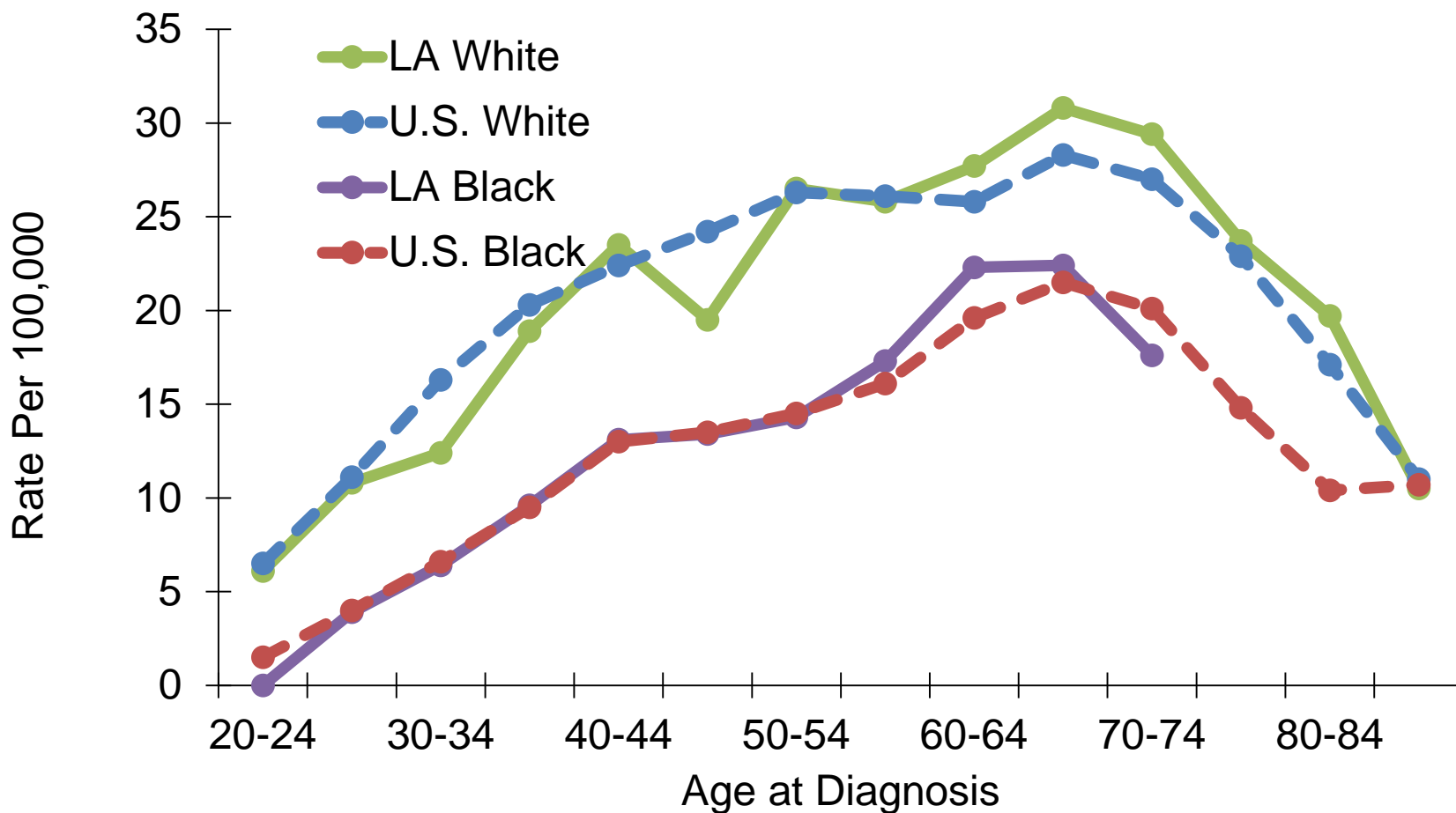
* Black Male Age-Specific Incidence Rates could not be displayed due to fewer than 16 cases.

Thyroid Cancer: Age-Specific Incidence Rates by Gender, 2009-2013



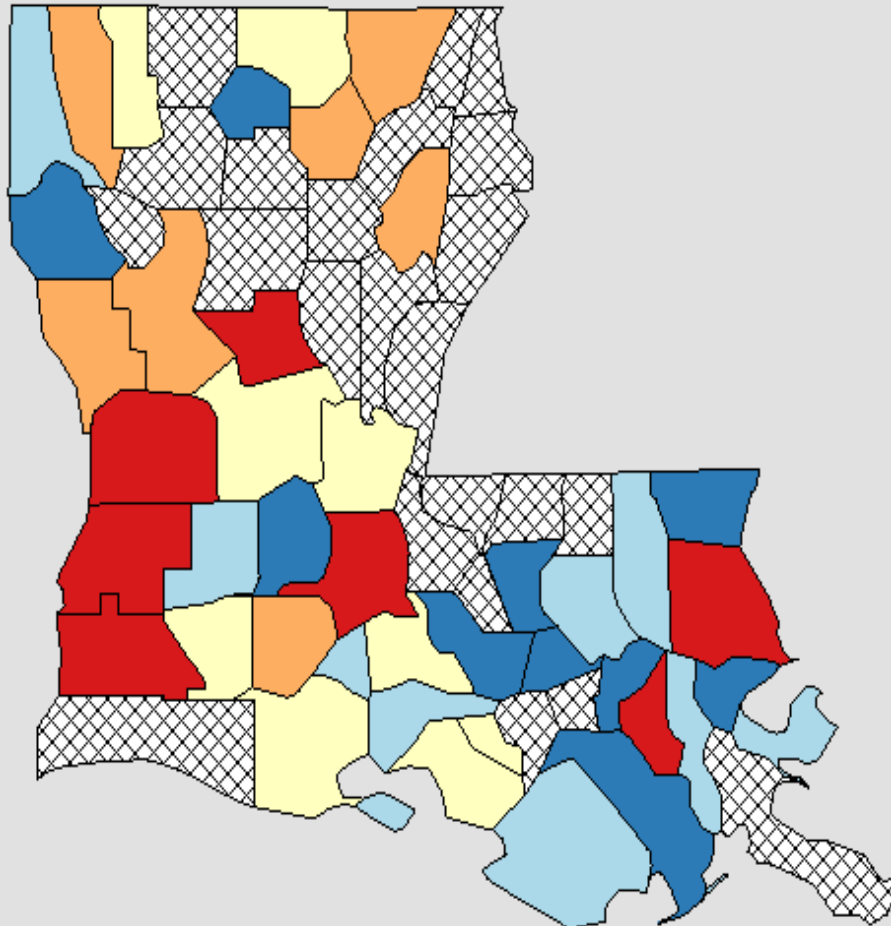
U.S. data source: 18 SEER registries.

Thyroid Cancer: Age-Specific Incidence Rates by Race, 2009-2013



U.S. data source: 18 SEER registries.

Incidence Rates of Thyroid Cancer in Louisiana, All Races, Both Sexes, 2009-2013



Age-Adjusted
Annual Incidence Rate
(Cases per 100,000)

[Quantile Interval](#)

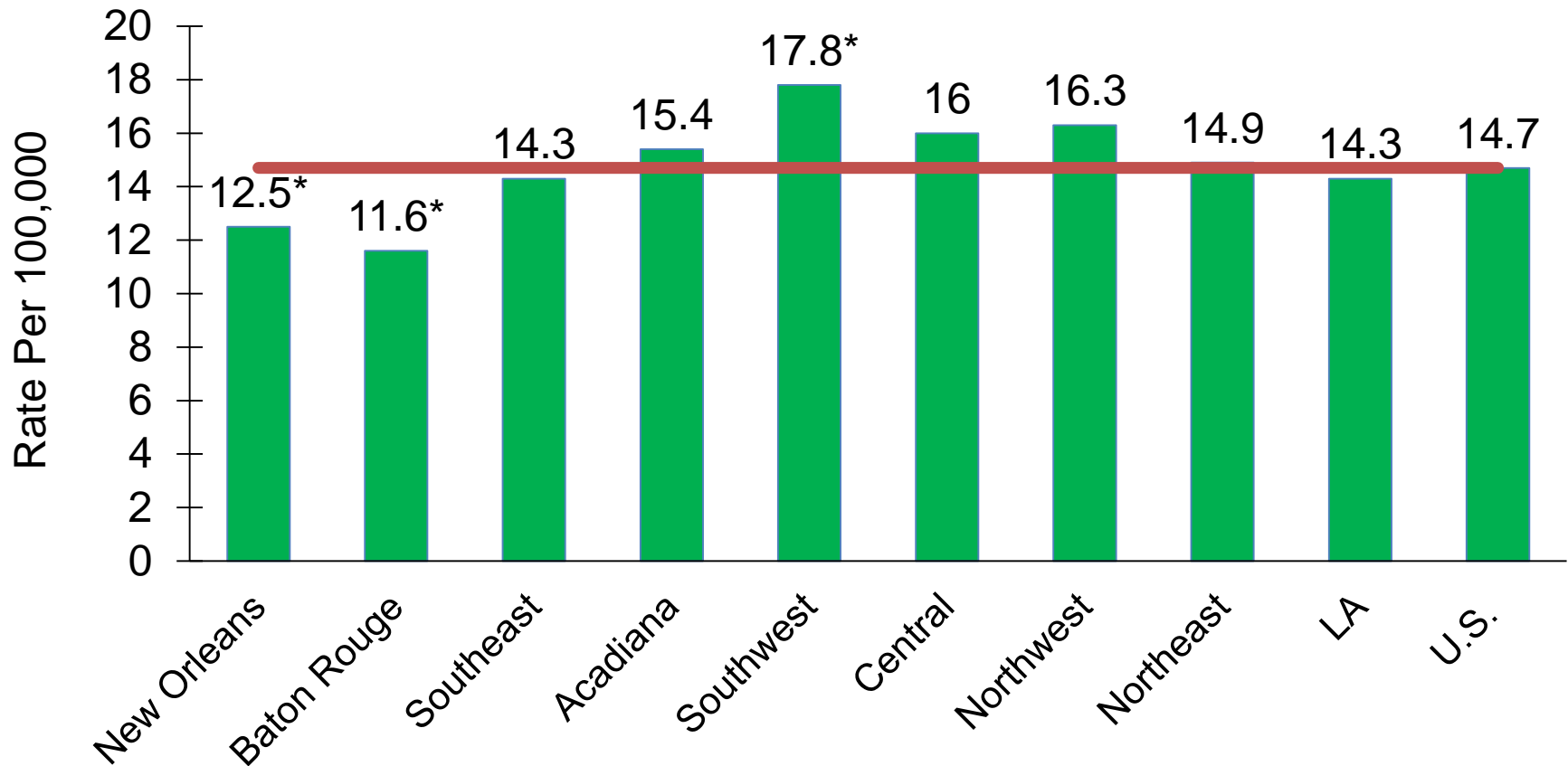
- 7.2 to 11.8
- 11.8 to 13.1
- 13.1 to 14.3
- 14.3 to 15.0
- 15.0 to 19.3

Suppressed * / **

US (SEER + NPCR)
Rate (95% C.I.)
14.0 (14.0 - 14.1)

Louisiana
Rate (95% C.I.)
12.4 (11.9 - 12.8)

Thyroid Cancer Incidence^{1,2} by Region: Louisiana, Whites, 2009-2013

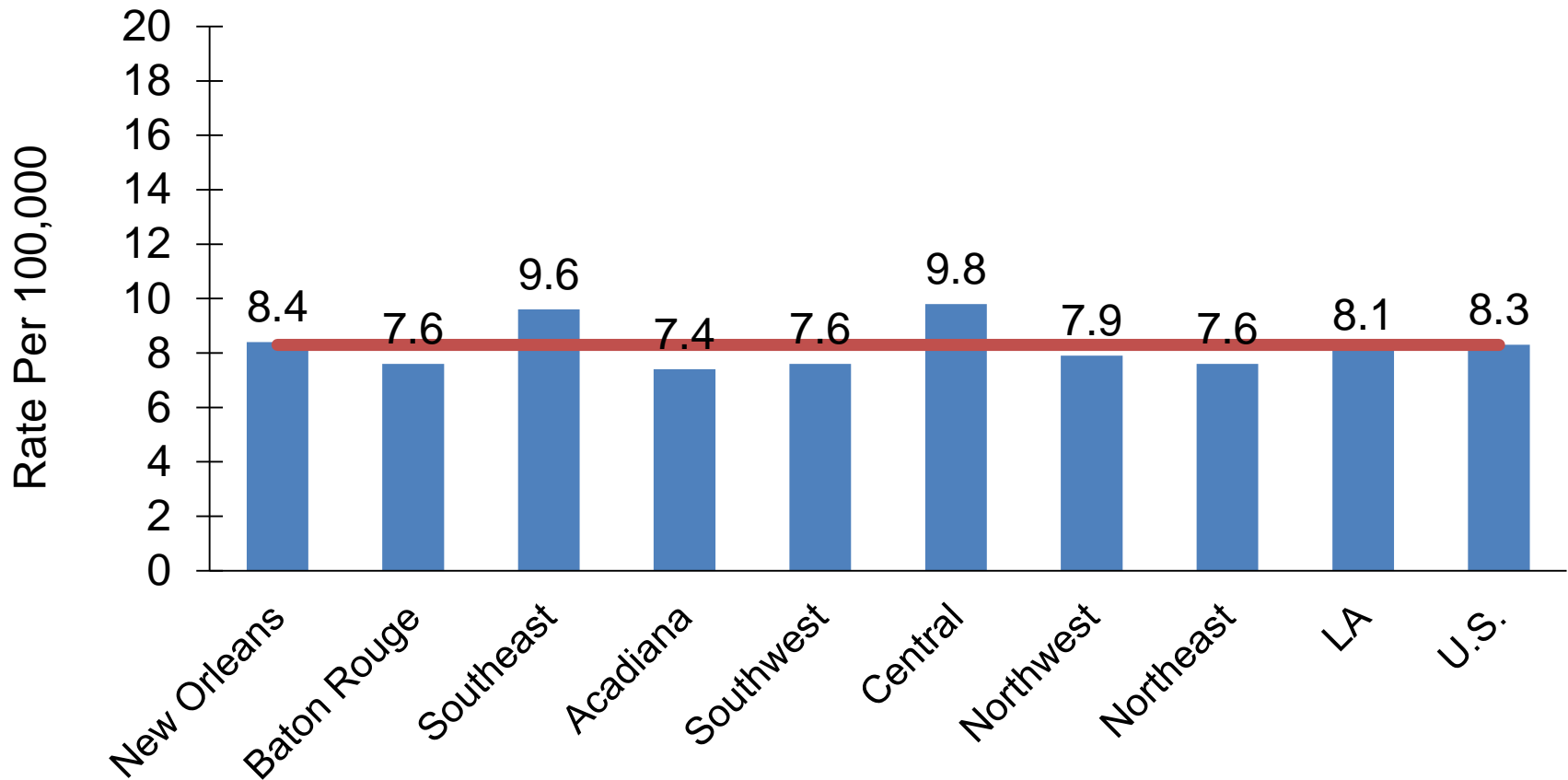


¹ Age-adjusted to the 2000 U.S. standard population.

² Data source for the U.S. was the 18 SEER registries.

* Incidence rate of regions/Louisiana is significantly different from that of the U.S.

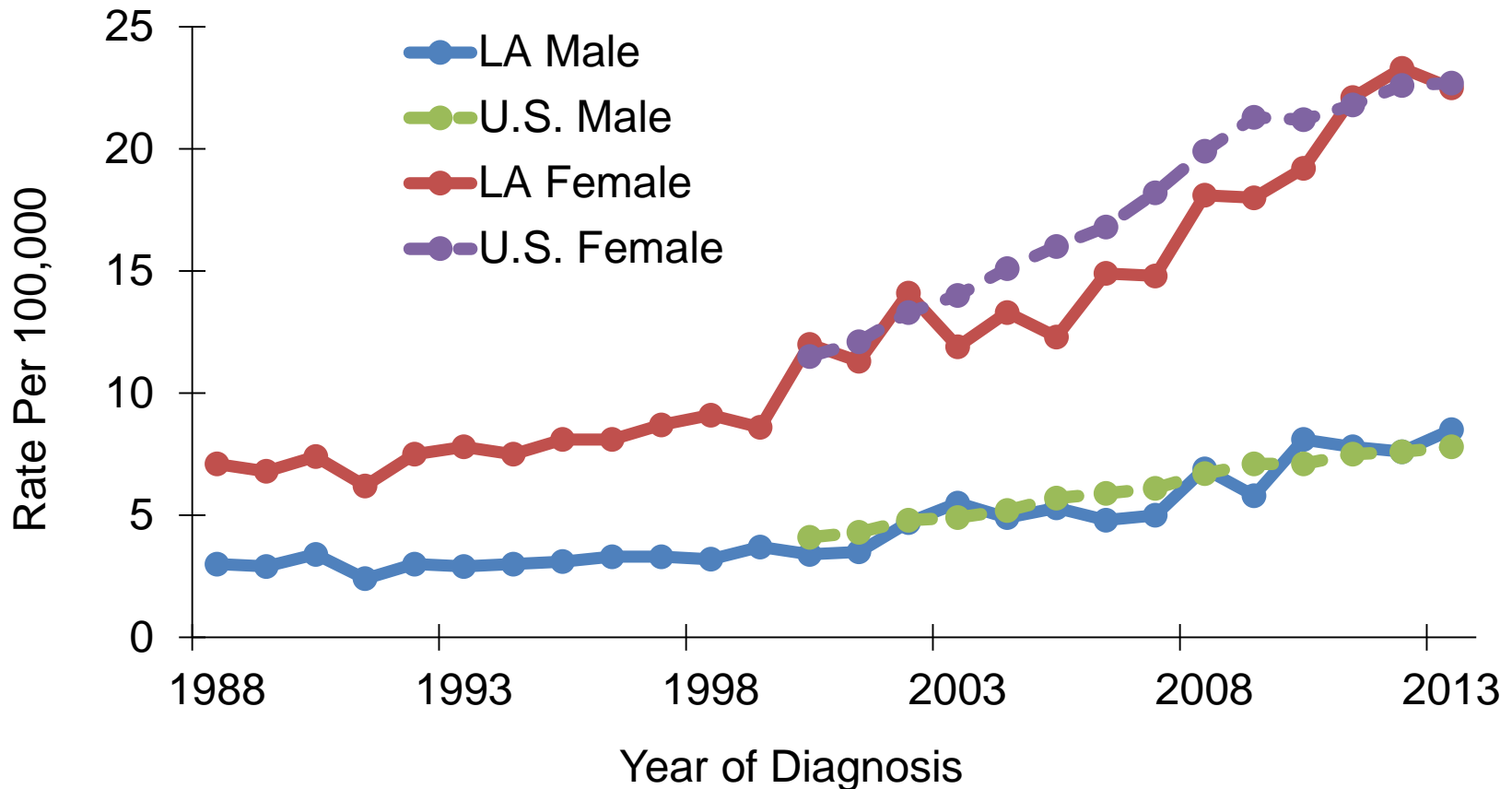
Thyroid Cancer Incidence^{1,2} by Region: Louisiana, Blacks, 2009-2013



¹ Age-adjusted to the 2000 U.S. standard population.

² Data source for the U.S. was the 18 SEER registries.

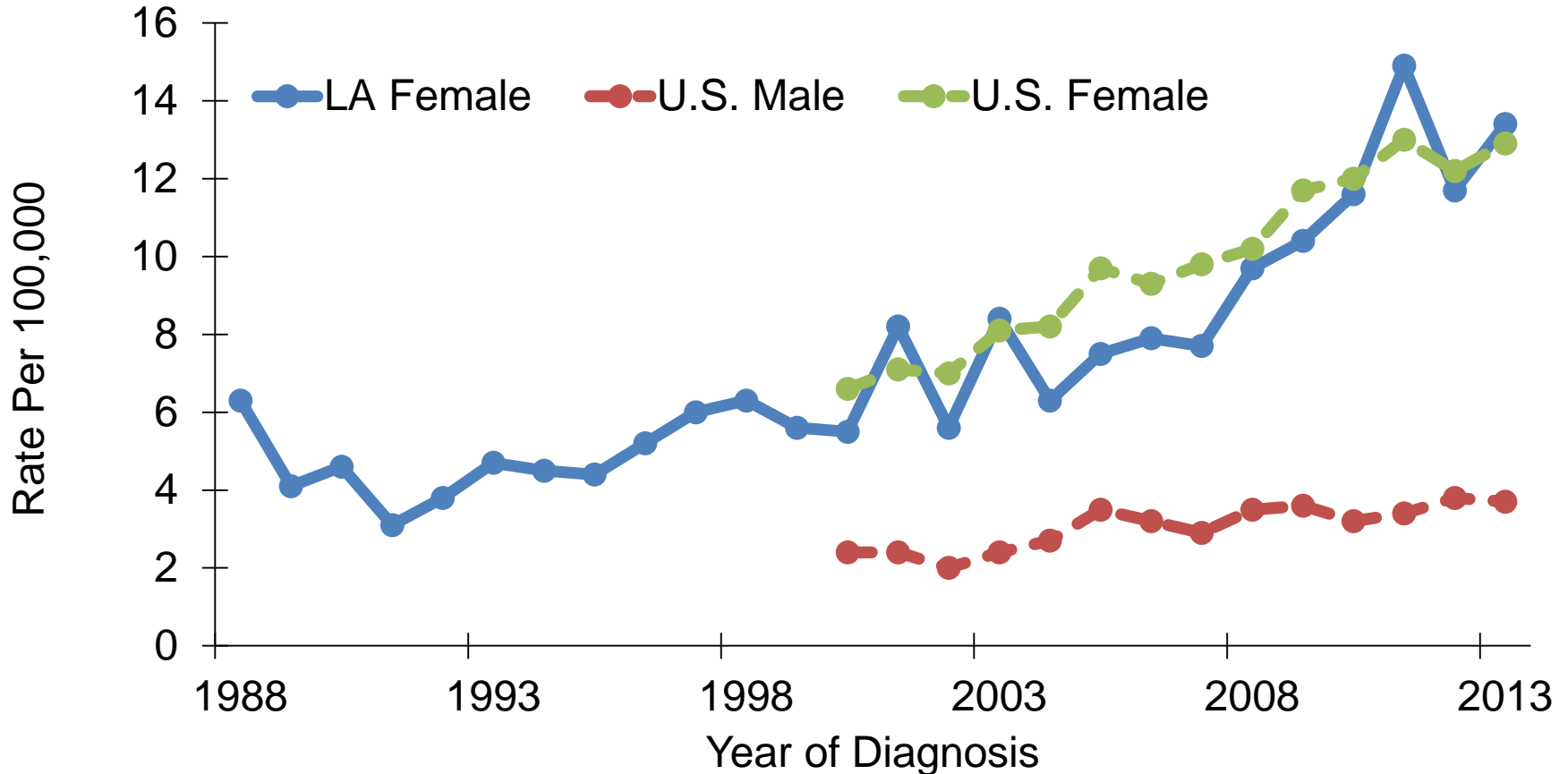
Thyroid Cancer: Trends of Incidence Rates^{1,2}, Whites, 1988-2013



¹ Age-adjusted to the 2000 U.S. standard population.

² U.S. data source: 18 SEER registries.

Thyroid Cancer: Trends of Incidence Rates^{1,2}, Blacks*, 1988- 2013

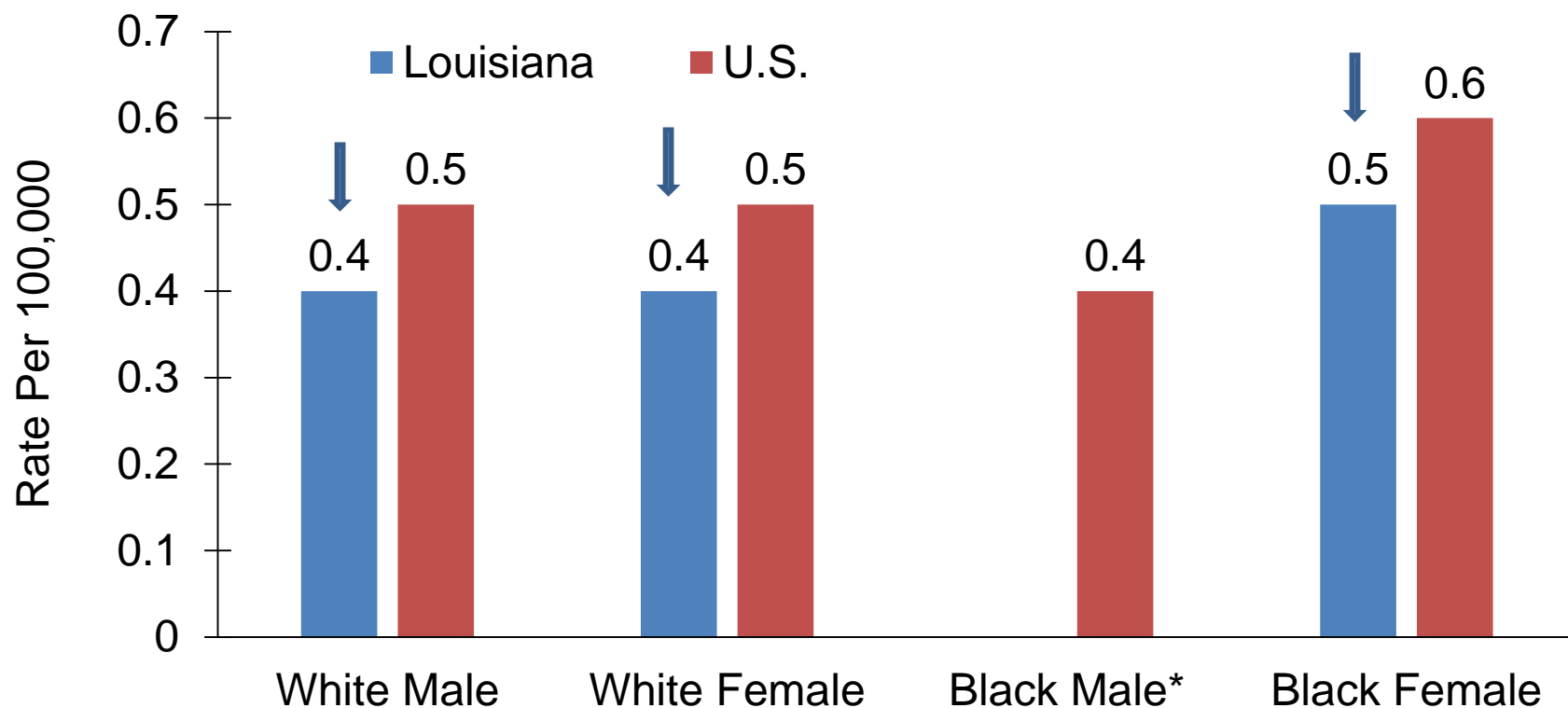


¹ Age-adjusted to the 2000 U.S. standard population.

² U.S. data source: 18 SEER registries.

* Black LA male incidence trends can not displayed due to small case counts.

Thyroid Cancer: Mortality Rates¹, Louisiana vs. US², 2009-2013

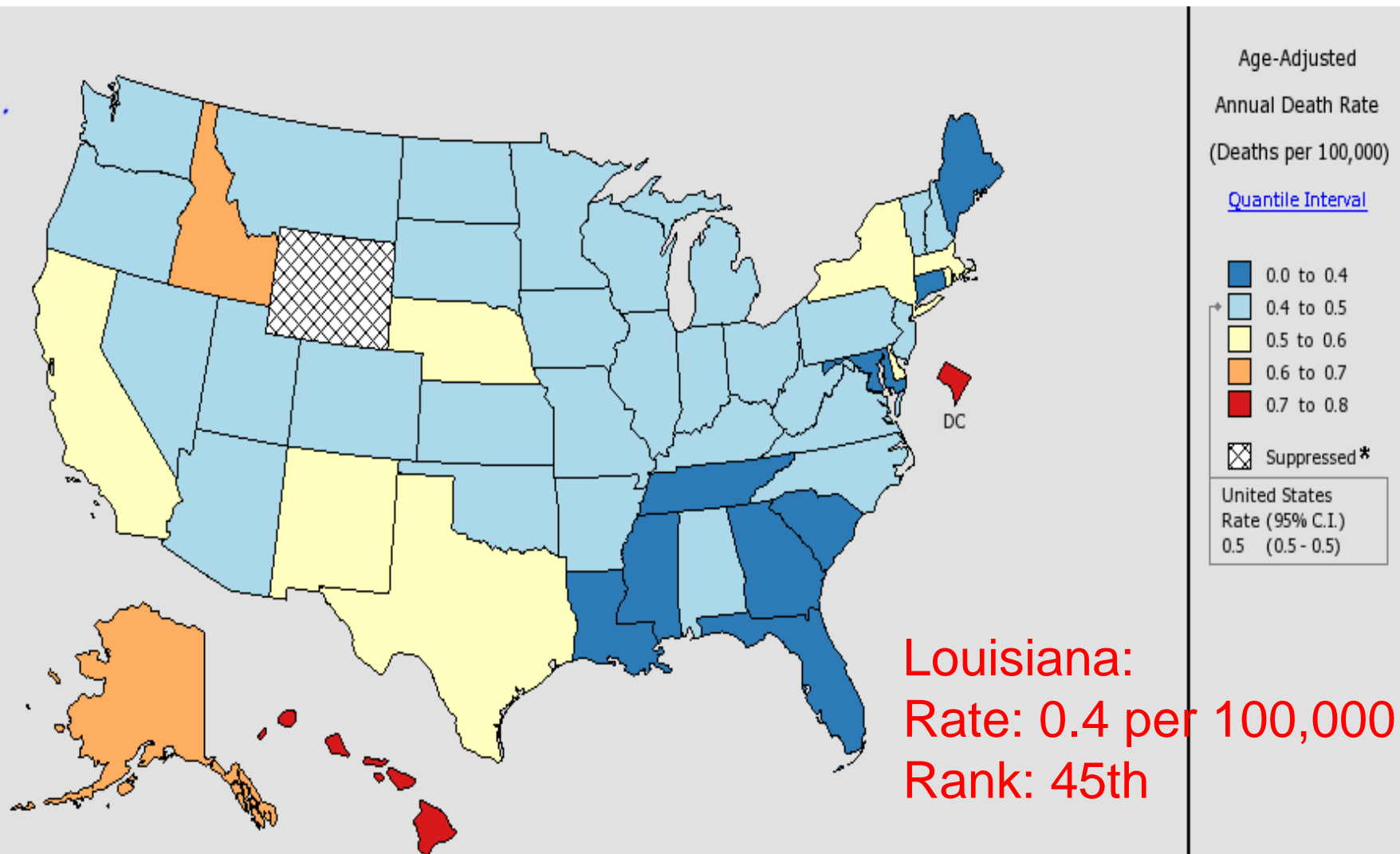


¹ Age-adjusted to the 2000 U.S. standard population.

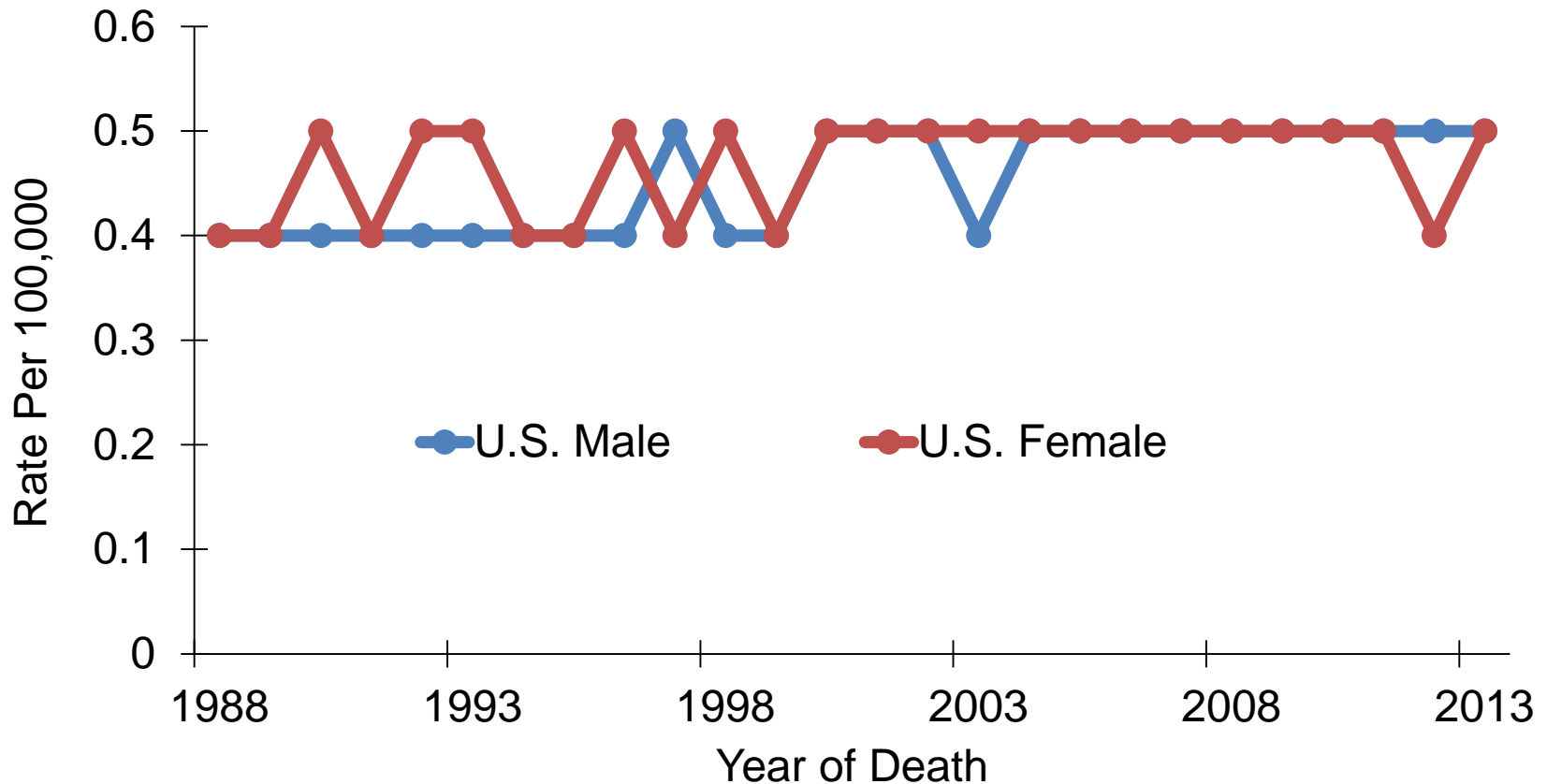
² Data source: National Center of Health Statistics (NCHS).

* LA black male mortality rate, 2009-2013, could not be displayed due to small case counts.

Mortality Rates of Thyroid Cancer in the U.S., All Races, Both Sexes, 2009-2013



Thyroid Cancer: Trends of Mortality Rates^{1,2,3}, Whites, 1988-2013

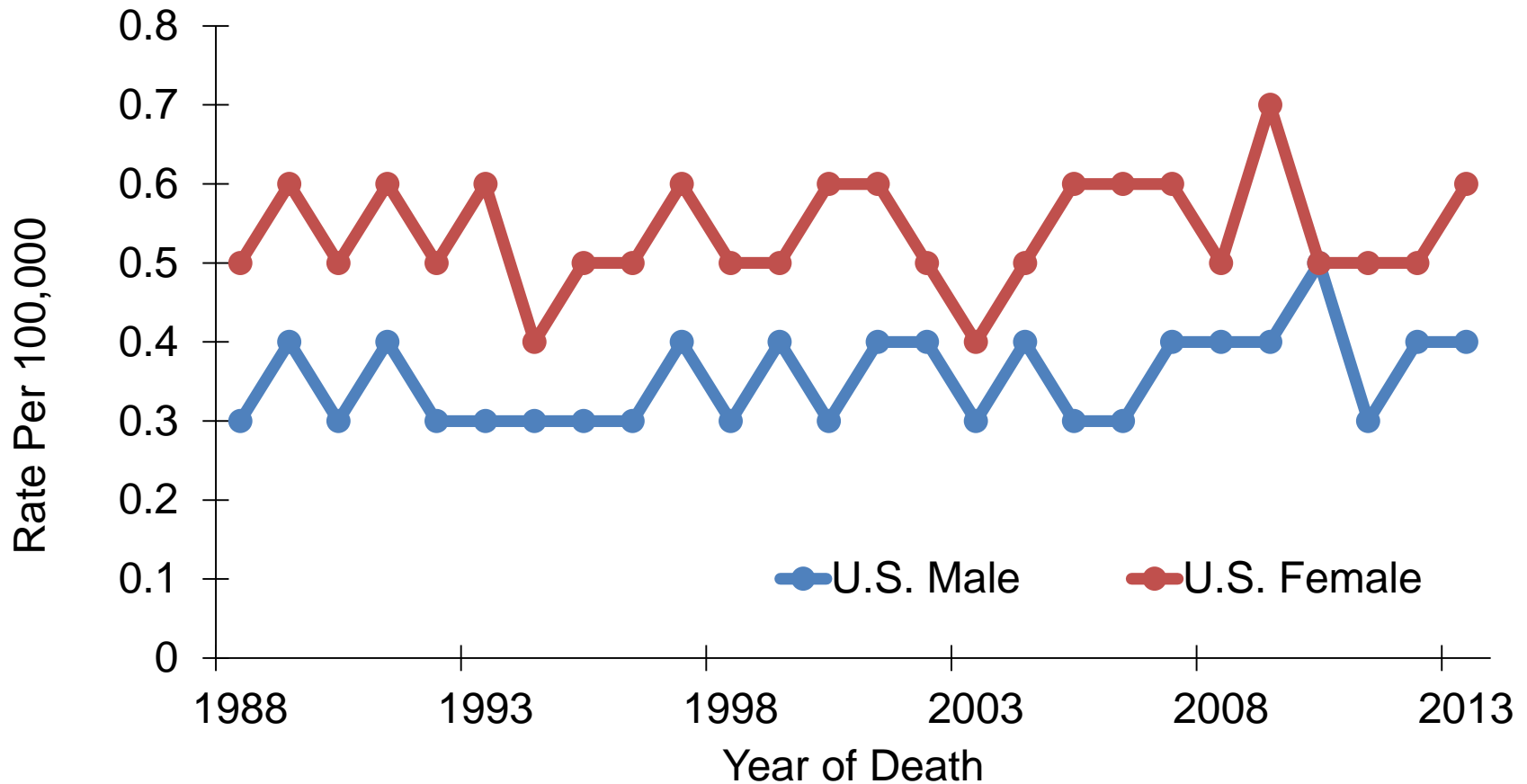


¹ Adjusted to the 2000 U.S. standard population.

² Data source: National Center of Health Statistics (NCHS).

³ LA male and female mortality trends could not be displayed due to lack of cases.

Thyroid Cancer: Trends of Mortality Rates^{1,2,3}, Blacks, 1988-2013

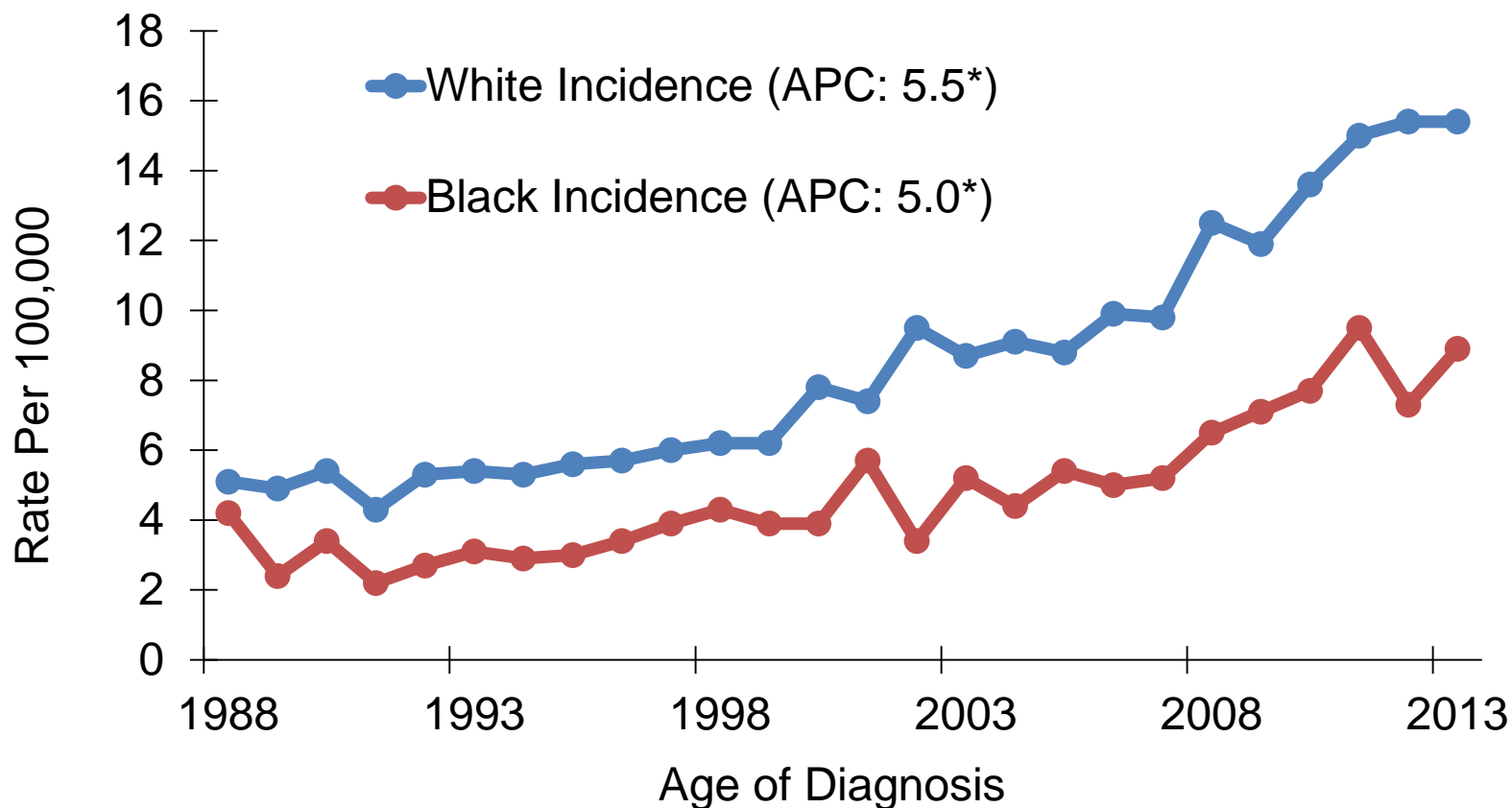


¹ Age-adjusted to the 2000 U.S. standard population.

² Data source: National Center of Health Statistics (NCHS).

³ LA male and female mortality trends could not be displayed due to small case counts.

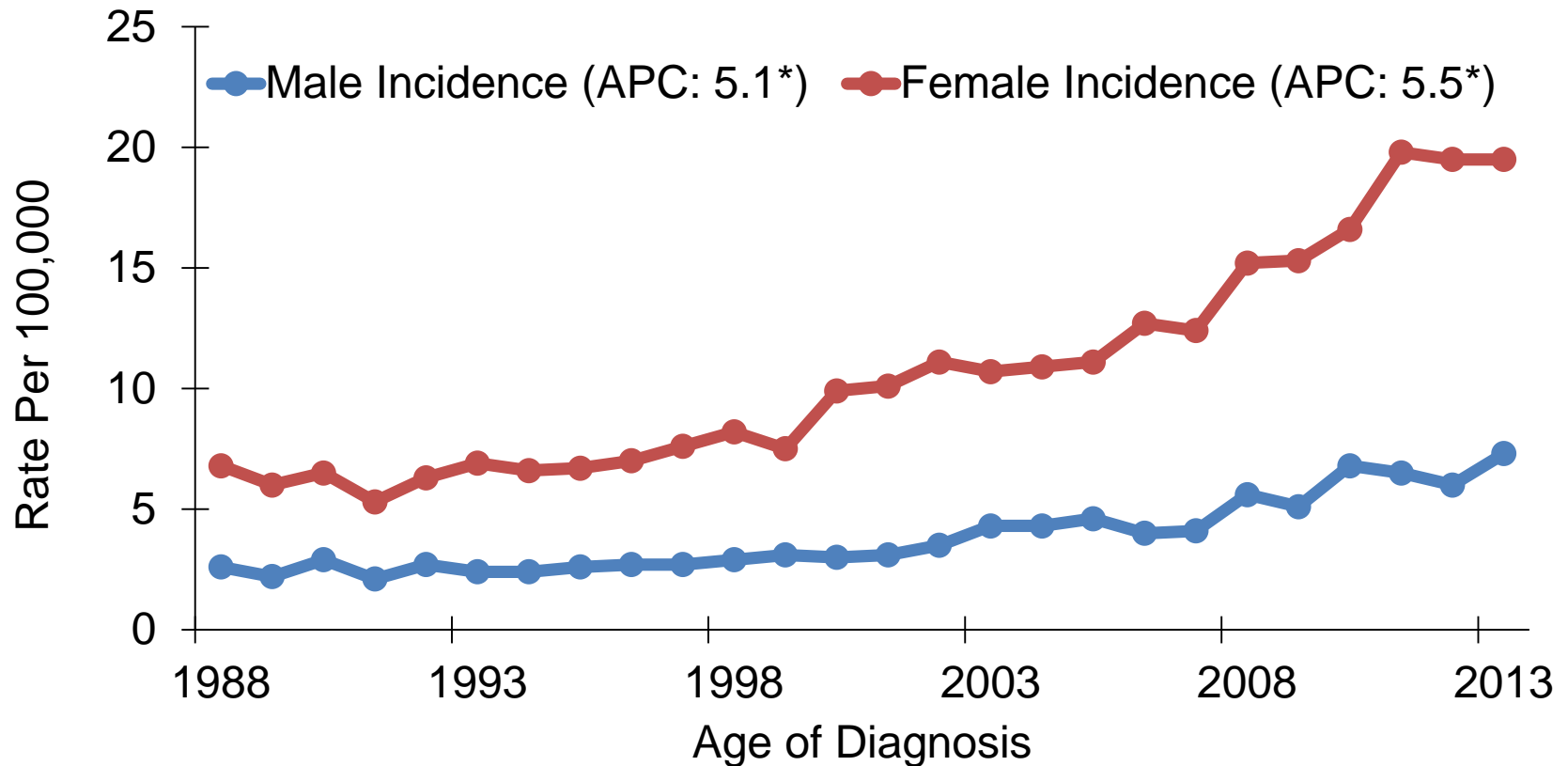
Thyroid Cancer: Trends of Incidence and Mortality Rates¹, by Race, Louisiana, 1988-2013



*APCs were calculated using weighted least squares method.

¹LA mortality trends by race could not be displayed due to small case counts.

Thyroid Cancer: Trends of Incidence and Mortality Rates¹, by Gender, Louisiana, 1988-2013

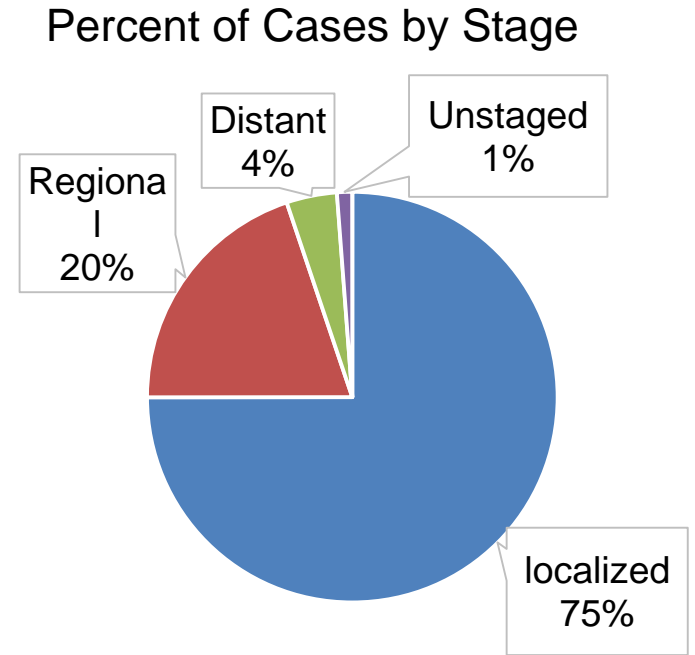
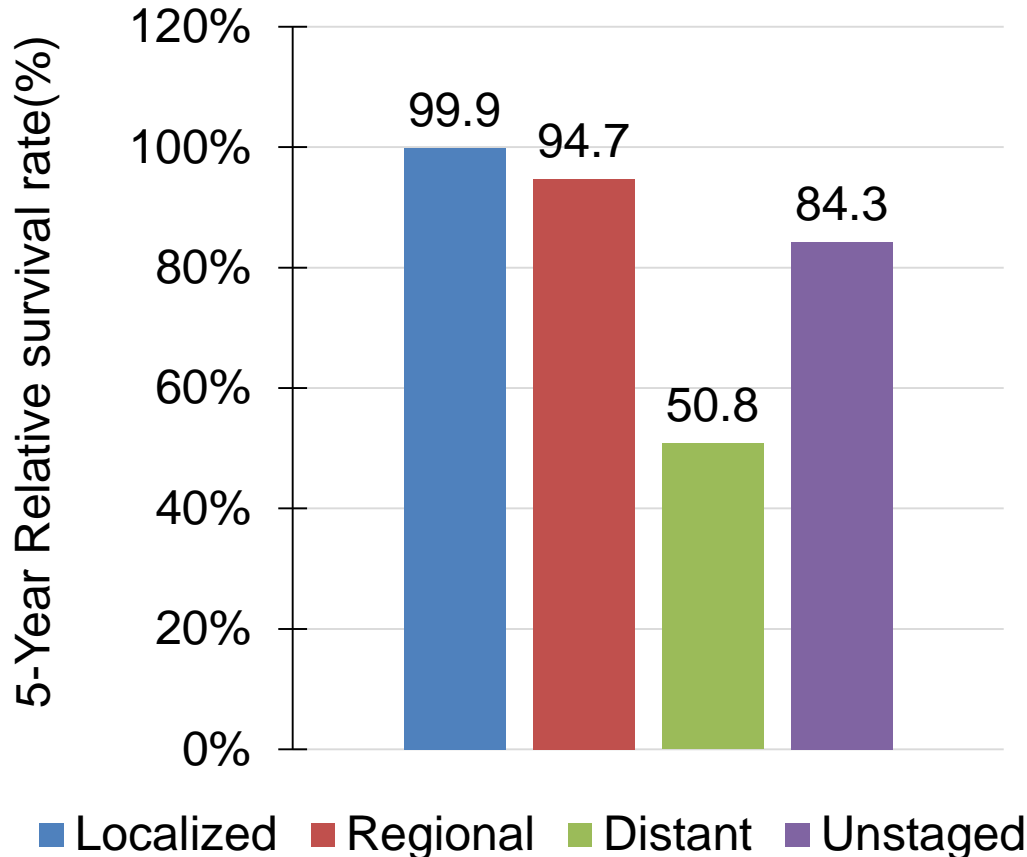


*APCs were calculated using weighted least squares method.

¹LA mortality trends by race could not be displayed due to lack of cases.

Thyroid Cancer: Louisiana

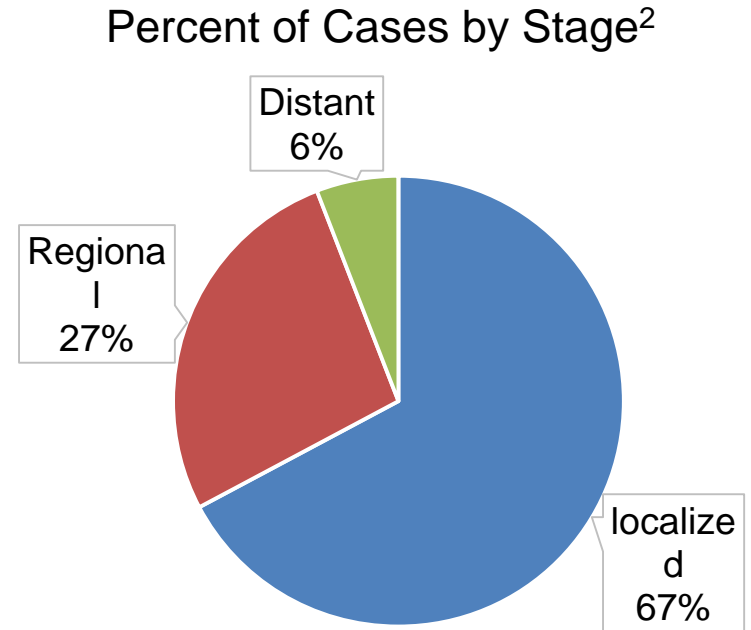
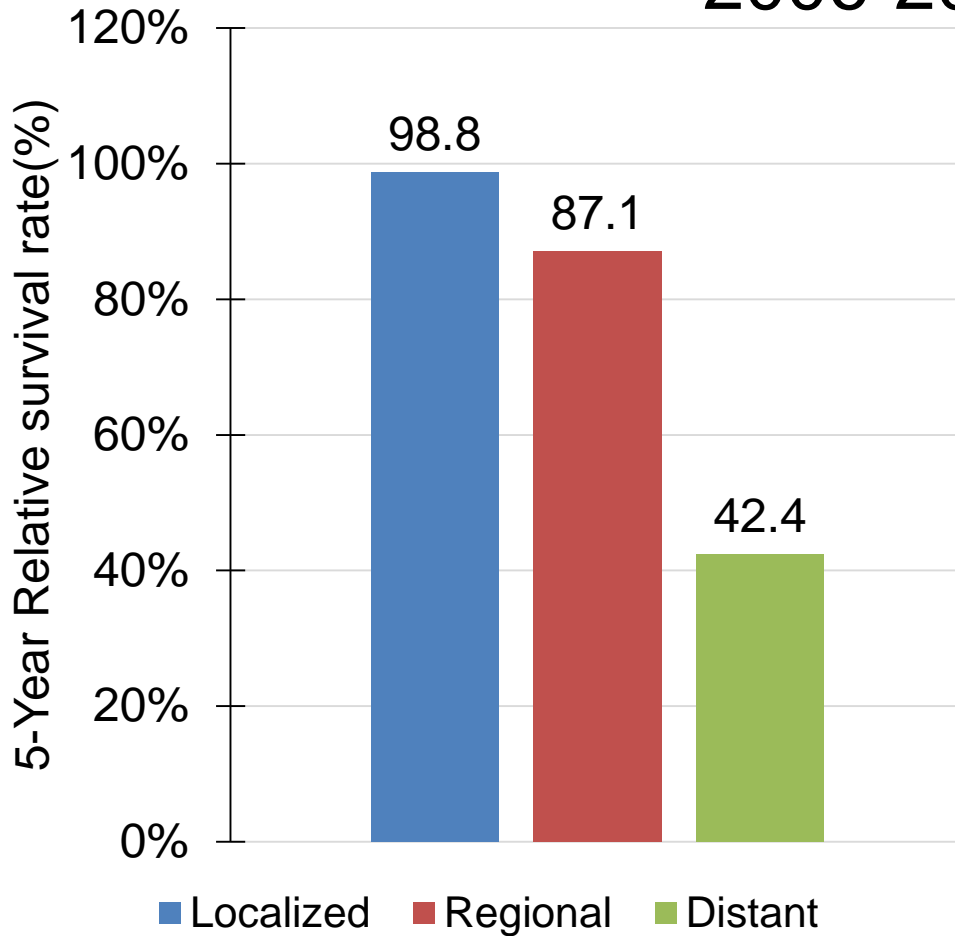
5-Year Relative Survival by Stage¹, All Races, Both Sexes, 2006-2012



¹ The stage distribution is based on Derived Summary Stage 2000.

Thyroid Cancer: Louisiana

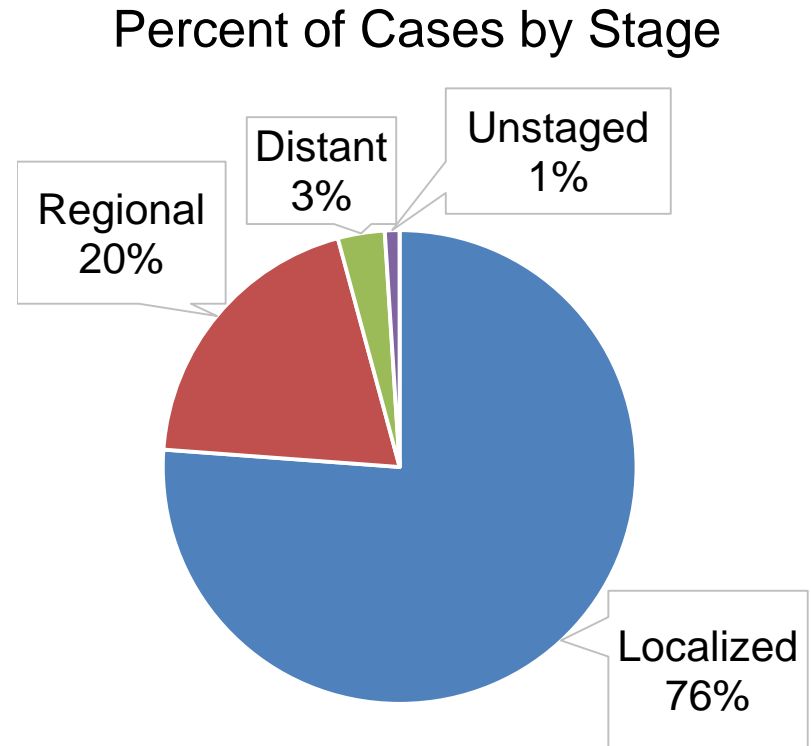
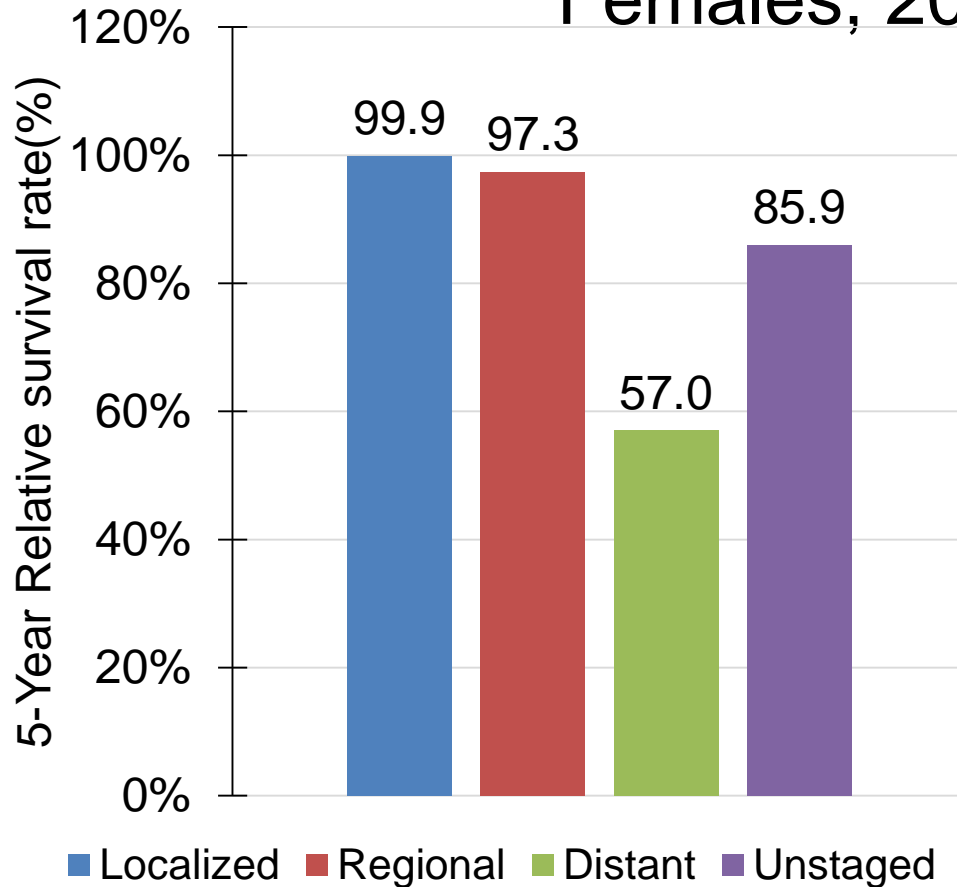
5-Year Relative Survival by Stage¹, White Males, 2006-2012



¹ The stage distribution is based on Derived Summary Stage 2000.

² The survival rate for unstaged cases could not be displayed due to small case counts.

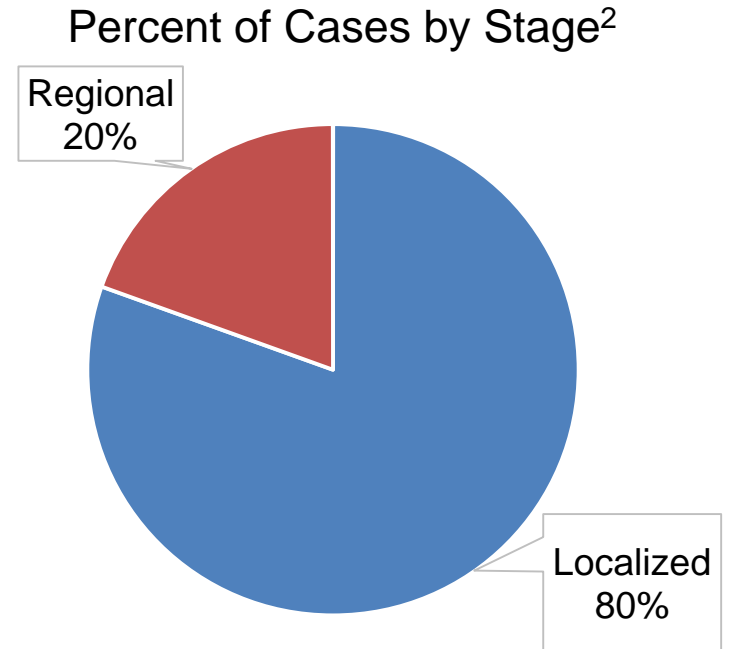
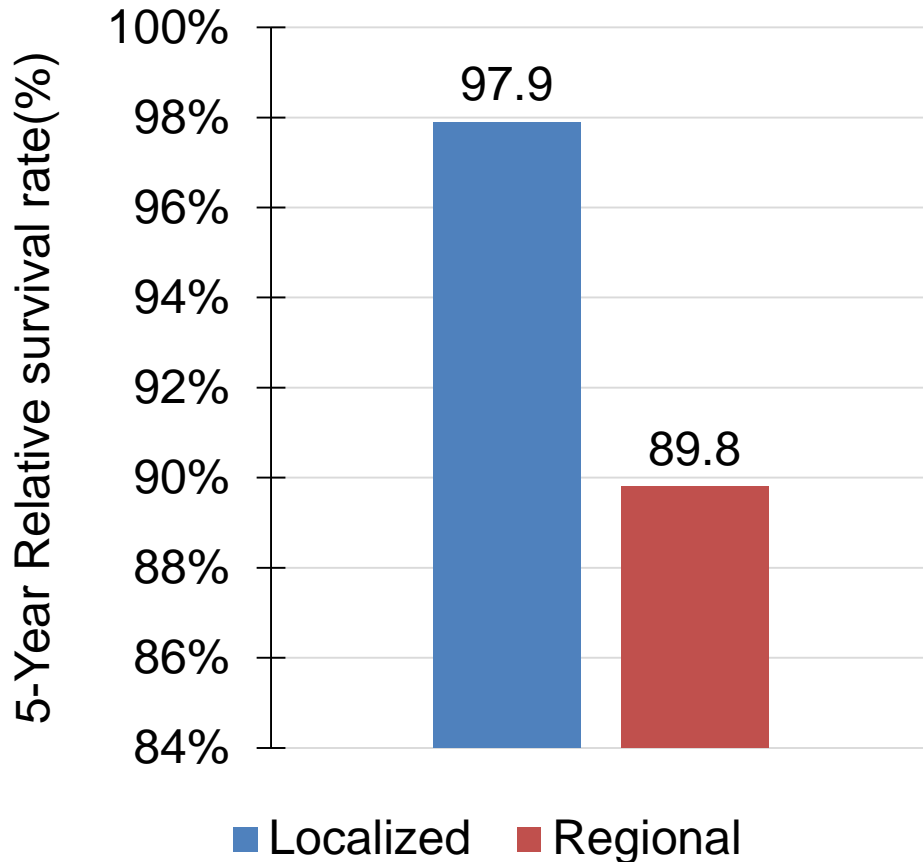
Thyroid Cancer: Louisiana 5-Year Relative Survival by Stage¹, White Females, 2006-2012



¹ The stage distribution is based on Derived Summary Stage 2000.

Thyroid Cancer: Louisiana

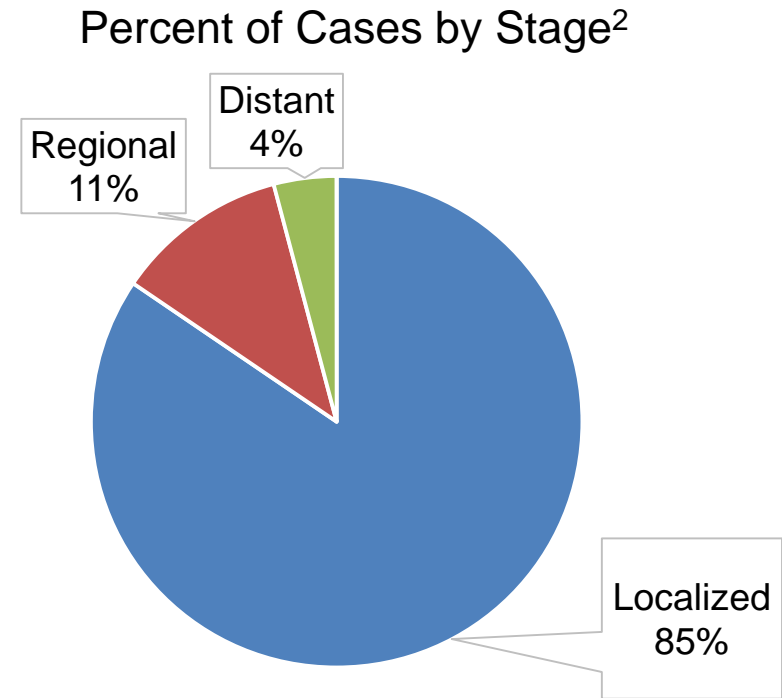
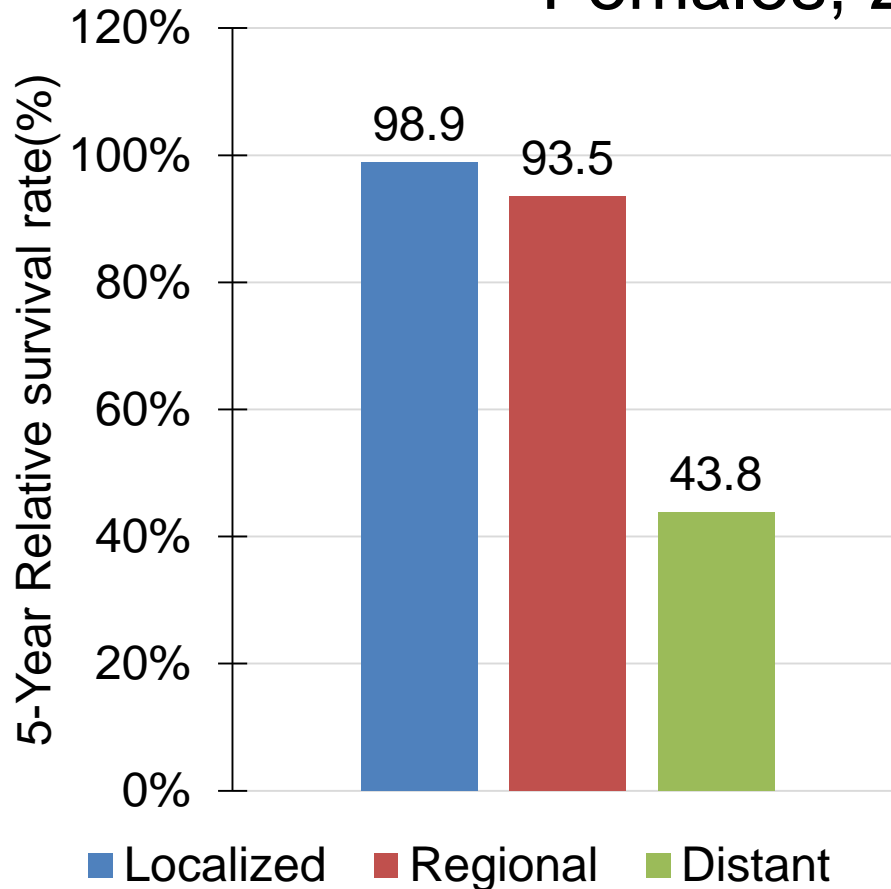
5-Year Relative Survival by Stage¹, Black Males, 2006-2012



¹ The stage distribution is based on Derived Summary Stage 2000.

² The survival rates for distant and unstaged cases could not be displayed due to small case counts.

Thyroid Cancer: Louisiana 5-Year Relative Survival by Stage¹, Black Females, 2006-2012



¹ The stage distribution is based on Derived Summary Stage 2000.

² The survival rate for unstaged cases could not be displayed due to small case counts.

Data Sources

Surveillance, Epidemiology, and End Results (SEER) Program (www.seer.cancer.gov) SEER*Stat Databases, National Cancer Institute, DCCPS, Surveillance Research Program, Surveillance Systems Branch, released April 2016, based on the November 2015 submission.

For Incidence:

- Incidence - SEER 18 Regs Research Data + Hurricane Katrina Impacted Louisiana Cases, Nov 2015 Sub (2000-2013) <Katrina/Rita Population Adjustment>
- SEER*DMS - LTR 1988-2013, June 7, 2016

For Mortality:

- mortality – all COD, aggregated with States, Total U.S. (1969-2013) <Katrina/Rita Population Adjustment>

For Survival:

- Incidence - SEER 18 Regs Research Data + Hurricane Katrina Impacted Louisiana Cases, Nov 2015 Sub (1973-2013 varying)

Acknowledgements

- **Hospital cancer registries** (<http://louisianatumorregistry.lsuhs.edu/>)
- **Louisiana Cancer Registrars' Association** (<http://www.lcra-usa.org/>)
- **Physicians and staff members in:**
 - Medical records offices
 - Pathology laboratories
 - Physician offices and clinics
 - Hospice programs and nursing homes
- **Regional and central offices of the Louisiana Tumor Registry**
(<http://louisianatumorregistry.lsuhs.edu/regionalregistries.html>)
- **School of Public Health, LSU Health Sciences Center–New Orleans**
- **Louisiana Cancer and Lung Trust Fund Board**
- **Coroners' offices**

Sources of LTR Funding

- National Cancer Institute, SEER Program
- National Program of Cancer Registries, CDC
- Louisiana Health Care Services Division

Editors

Shuang Yang, MPH

Meichin Hsieh, PhD, MSPH, CTR

Lauren Maniscalco, MPH

Xiaocheng Wu, MD, MPH, CTR

Contributors

Xiangrong Li, MD, MSPH

Brent Mumphrey, BS

Tina Lefante, MPH

Lisa Pareti, BS, RHIT, CTR

Yong Yi, PhD, MS

Questions?

Contact:

LTR-info@lsuhsc.edu

or

504-568-5757