

# Louisiana Cancer Facts & Figures, Prostate Cancer, 2016

Louisiana Tumor Registry

February, 2017

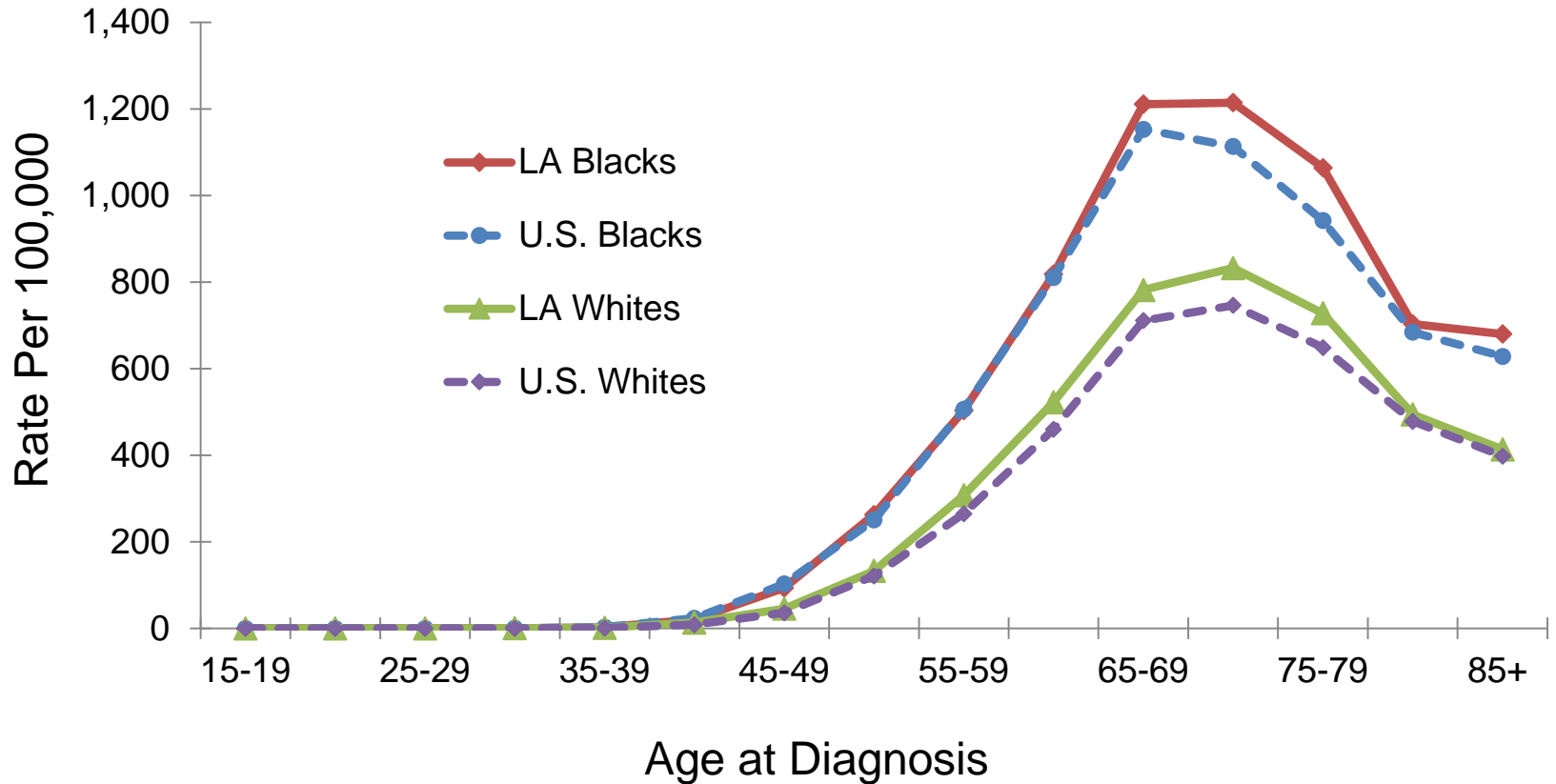
# Prostate Cancer

- Prostate cancer was the most common cancer and the 2nd leading cause of cancer deaths in Louisiana men from 2009 to 2013.<sup>1</sup>
- Between 2009 and 2013, the incidence rate of prostate cancer in Louisiana was the 2nd highest and the mortality rate was the 7<sup>th</sup> highest in the U.S.<sup>1</sup>
- About 2,950 new prostate cancers are expected to be diagnosed and about 360 males are expected to die of prostate cancer in Louisiana in 2016.<sup>2</sup>

1. Data source: NCI state cancer profile.

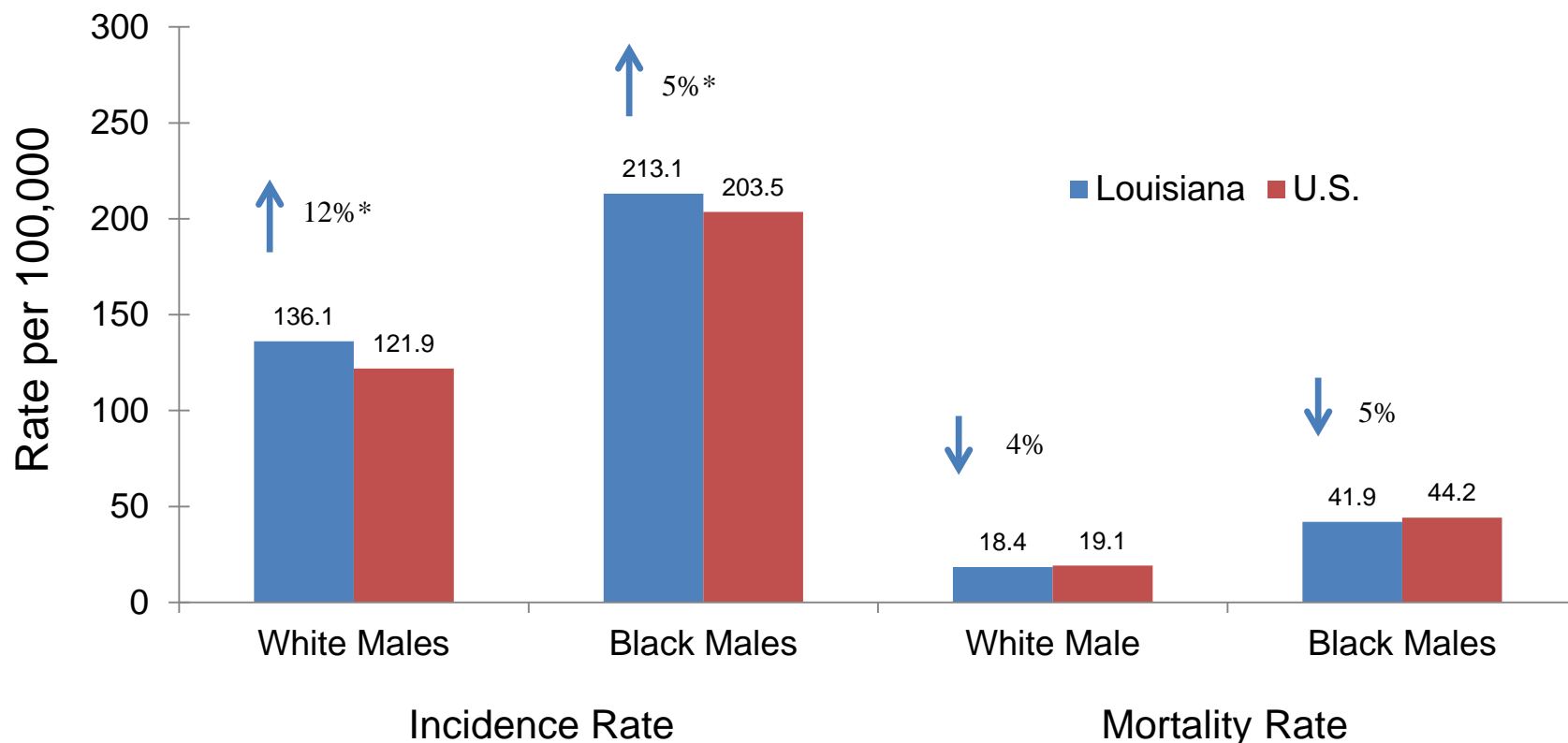
2. Data source: American Cancer Society, Cancer Facts & Figures 2016

# Prostate Cancer: Age-Specific Incidence Rates by Race, 2009-2013



U.S. data source: 18 SEER registries.

# Prostate Cancer: Incidence and Mortality Rates<sup>1,2</sup>, 2009-2013

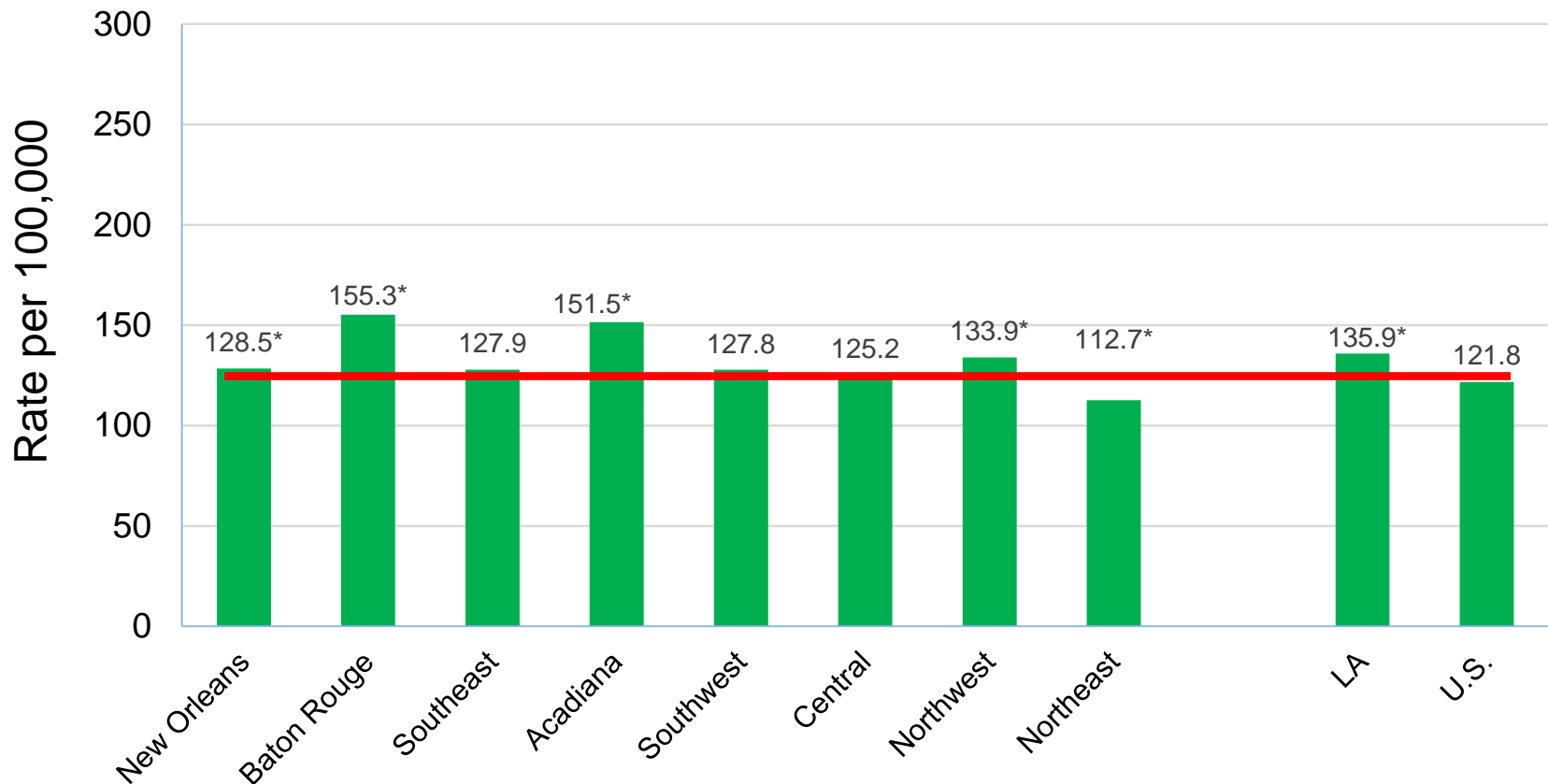


1. Age-adjusted to the 2000 U.S. standard population;

2. Incidence data source: SEER 18 registries; Mortality data source: National Center for Health Statistics (NCHS).

\* Rate of Louisiana is significantly different from that of the U.S.

# Prostate Cancer Incidence<sup>1,2</sup> by Region: Louisiana, Whites, 2009-2013

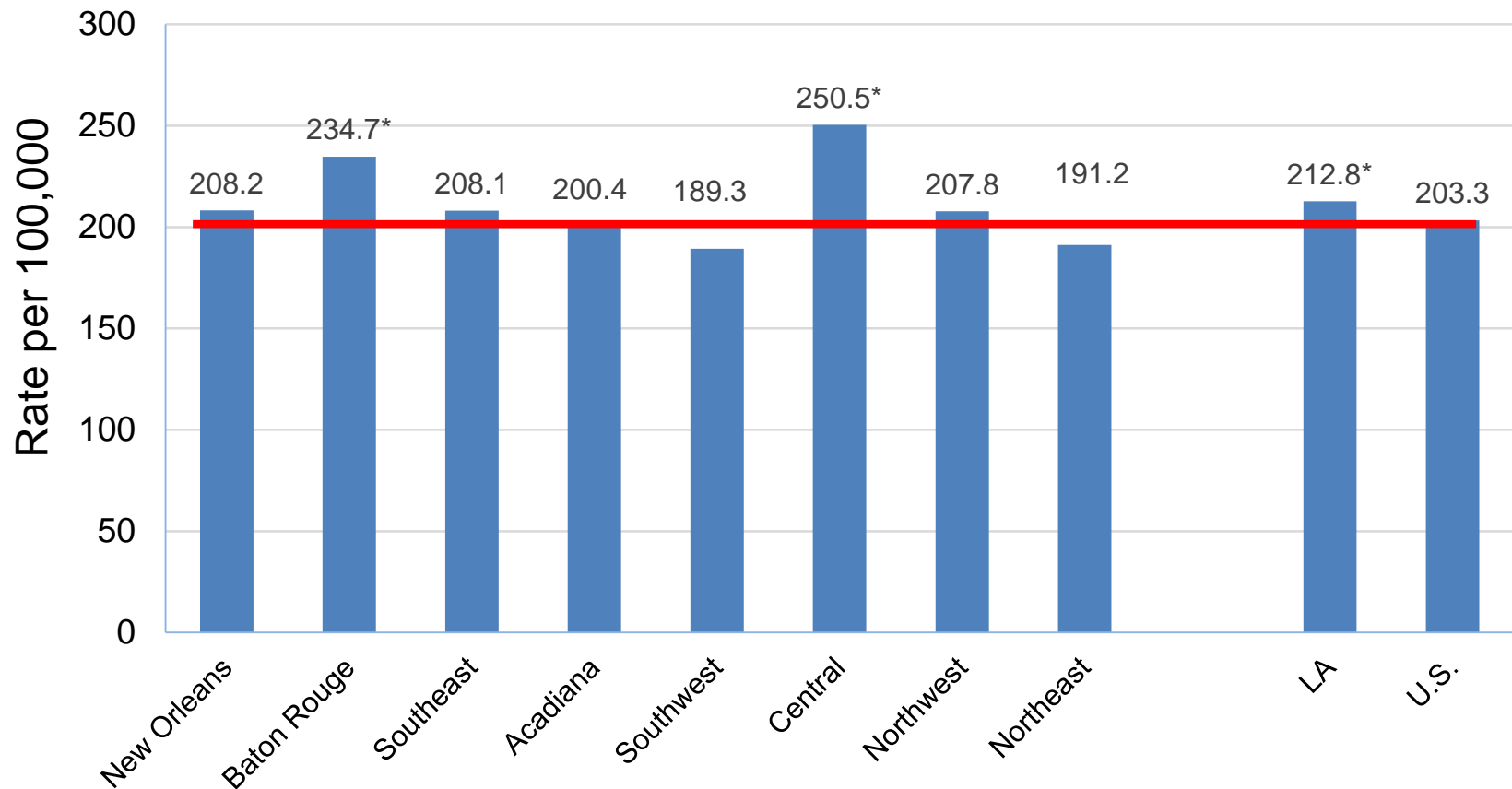


<sup>1</sup> Age-adjusted to the 2000 U.S. standard population.

<sup>2</sup> Data source for the U.S. was the 18 SEER registries.

\* Incidence rate of regions/Louisiana is significantly different from that of the U.S.

# Prostate Cancer Incidence<sup>1,2</sup> by Region: Louisiana, Blacks, 2009-2013

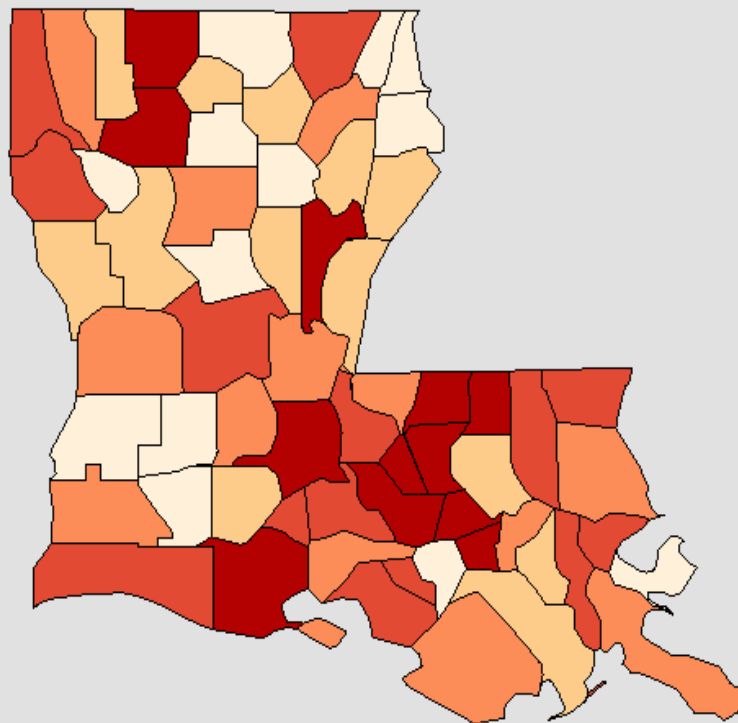


<sup>1</sup> Age-adjusted to the 2000 U.S. standard population.

<sup>2</sup> Data source for the U.S. was the 18 SEER registries.

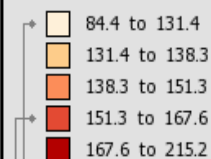
\* Incidence rate of regions/Louisiana is significantly different from that of the U.S.

Incidence Rates<sup>†</sup> for Louisiana  
Prostate, 2009 - 2013  
All Races (includes Hispanic), Male, All Ages



Age-Adjusted  
Annual Incidence Rate  
(Cases per 100,000)

[Quantile Interval](#)



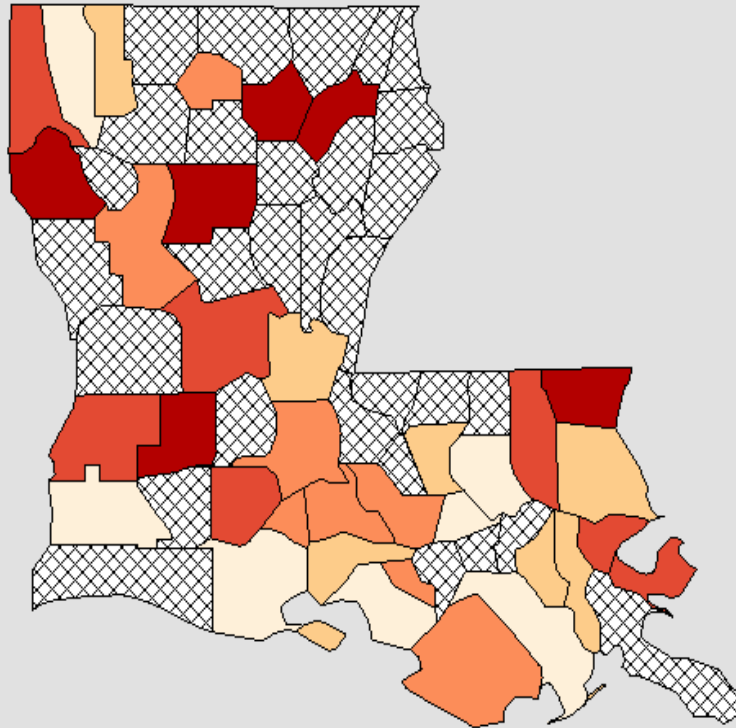
US (SEER + NPCR)  
Rate (95% C.I.)  
123.1 (122.8 - 123.3)

Louisiana  
Rate (95% C.I.)  
154.4 (152.0 - 156.7)

Notes:

Created by statecancerprofiles.cancer.gov on 10/11/2016 10:59 am.

**Death Rates for Louisiana**  
**Prostate, 2009 - 2013**  
**All Races (includes Hispanic), Male, All Ages**



Age-Adjusted  
 Annual Death Rate  
 (Deaths per 100,000)

[Quantile Interval](#)

- 13.4 to 19.0
- 19.0 to 21.3
- 21.3 to 25.0
- 25.0 to 30.7
- 30.7 to 53.4

Suppressed\*

United States  
 Rate (95% C.I.)  
 20.7 (20.5 - 20.8)

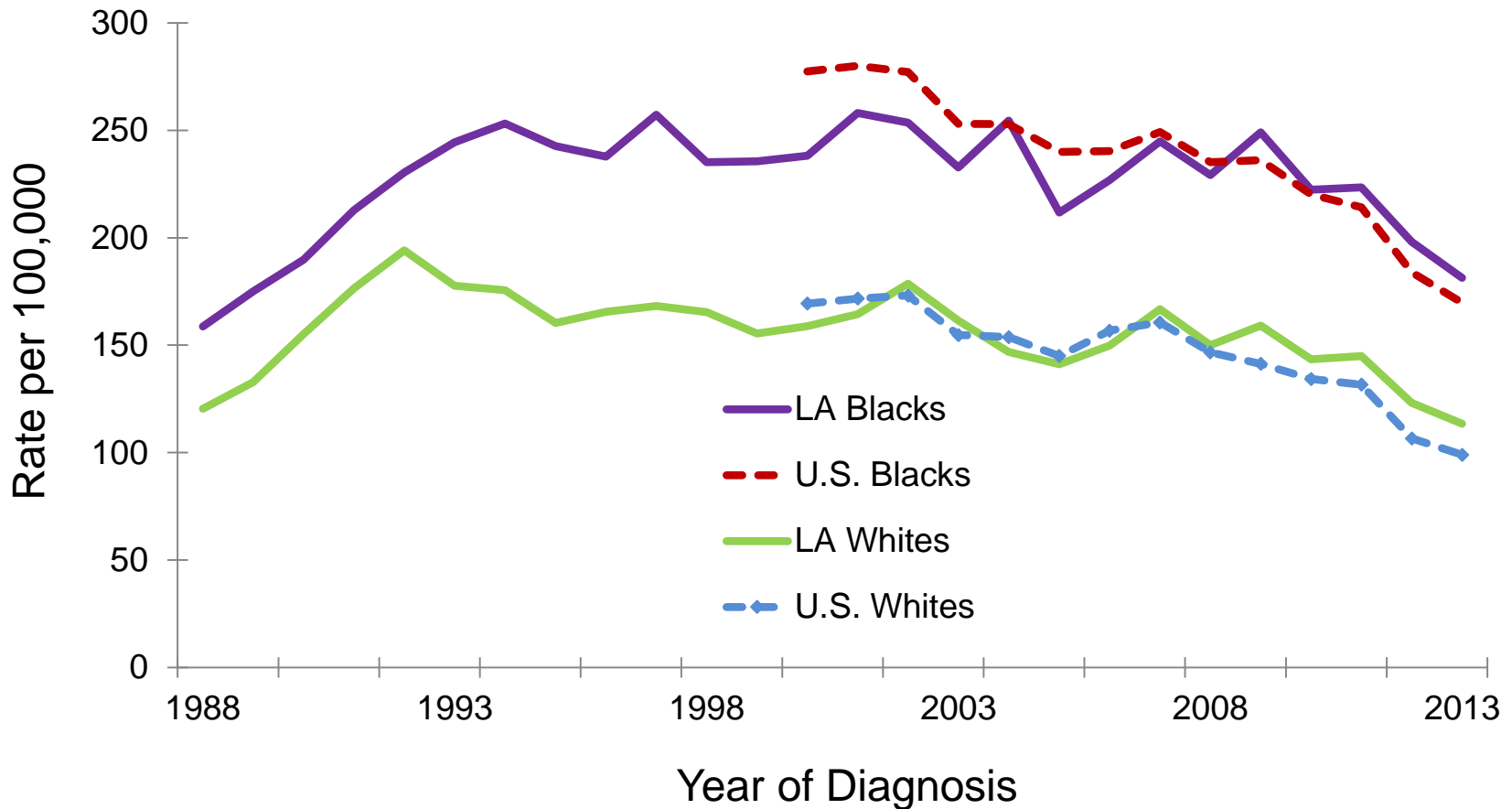
Louisiana  
 Rate (95% C.I.)  
 23.1 (22.1 - 24.2)

Healthy People 2020  
 Goal C-7  
 21.8

**Notes:**  
 Created by statecancerprofiles.cancer.gov on 10/11/2016 10:58 am.



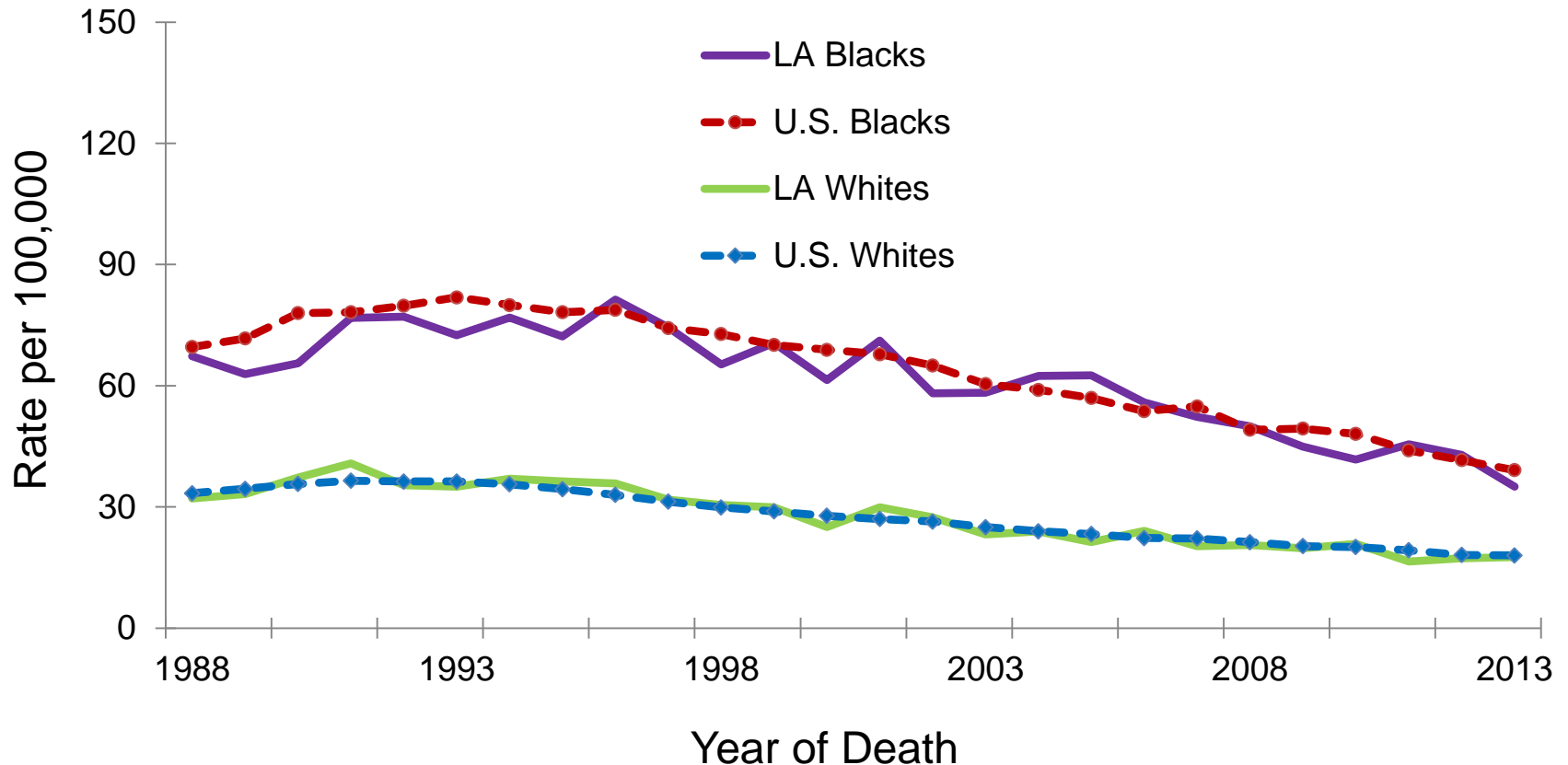
# Prostate Cancer: Trends of Incidence Rates<sup>1,2</sup>, 1988-2013



<sup>1</sup> Age-adjusted to the 2000 U.S. standard population.

<sup>2</sup> U.S. incidence data source: 18 SEER registries.

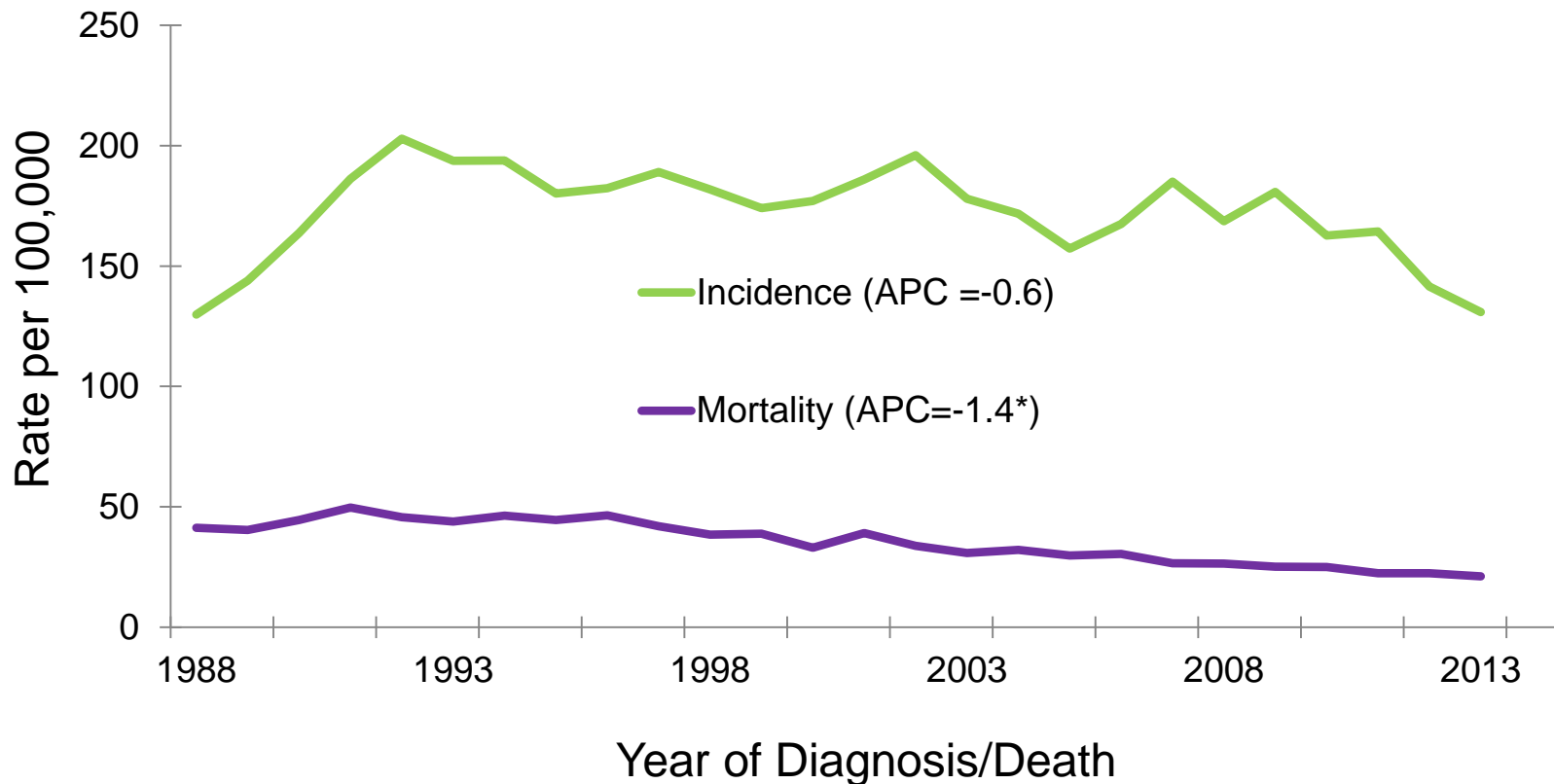
# Prostate Cancer: Trends of Cancer Mortality Rates<sup>1,2</sup>, 1988-2013



<sup>1</sup> Age-adjusted to the 2000 U.S. standard population.

<sup>2</sup> U.S. Mortality data source was the National Center of Health Statistics (NHCS).

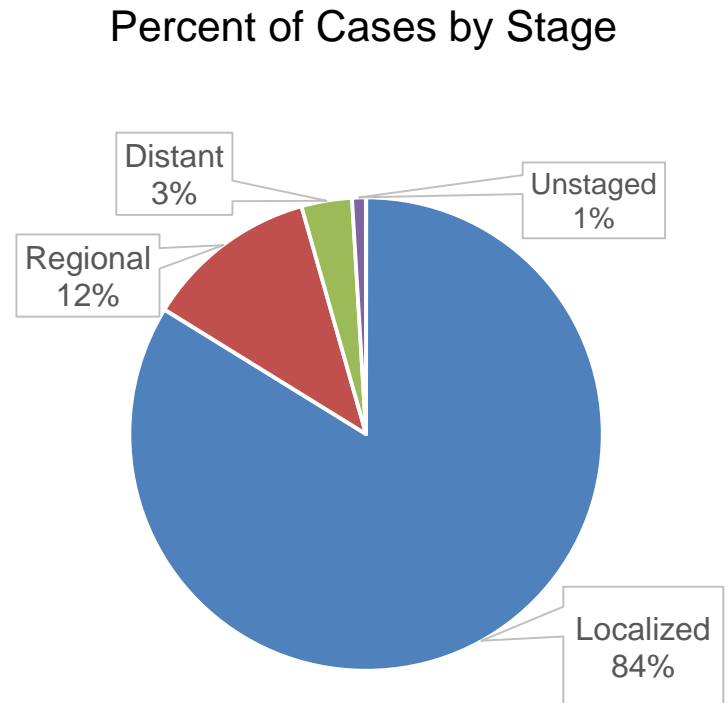
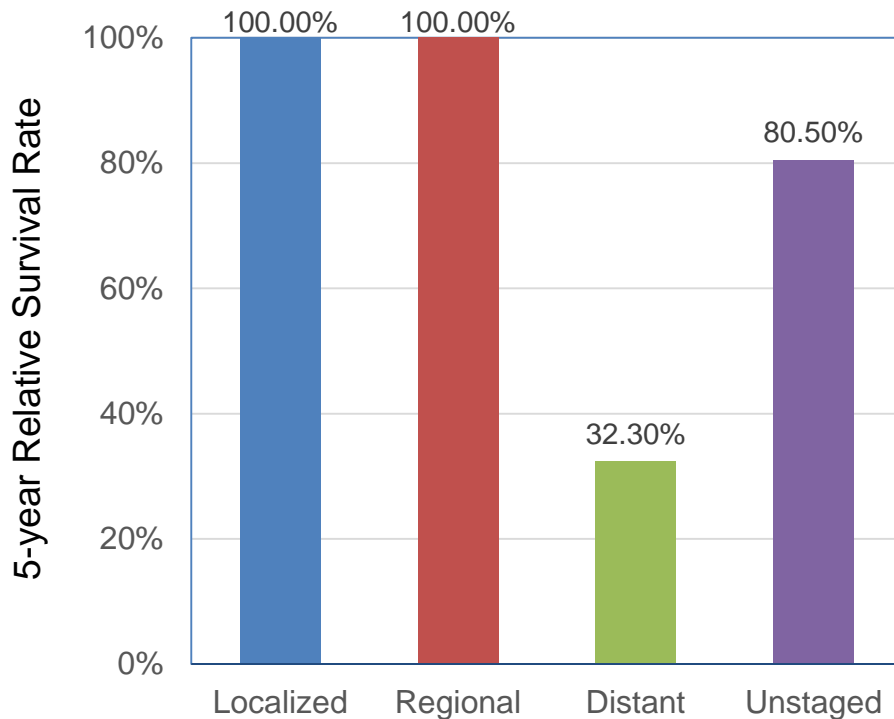
# Prostate Cancer: Louisiana, Trends of Incidence and Mortality Rates; 1988-2013



\*APCs were calculated using weighted least squares method

# Prostate Cancer<sup>1,2</sup>: Louisiana

## 5-Year Relative Survival by Stage<sup>2</sup>, White Males, 2006-2012

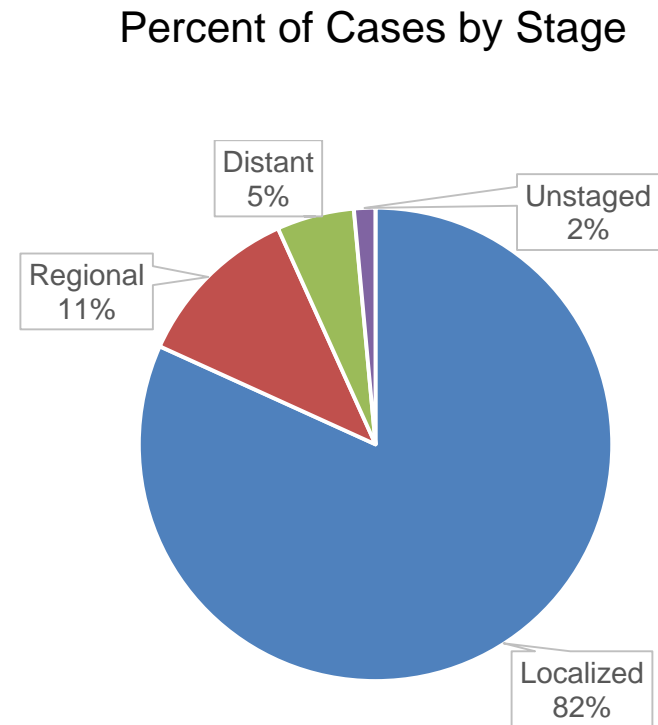
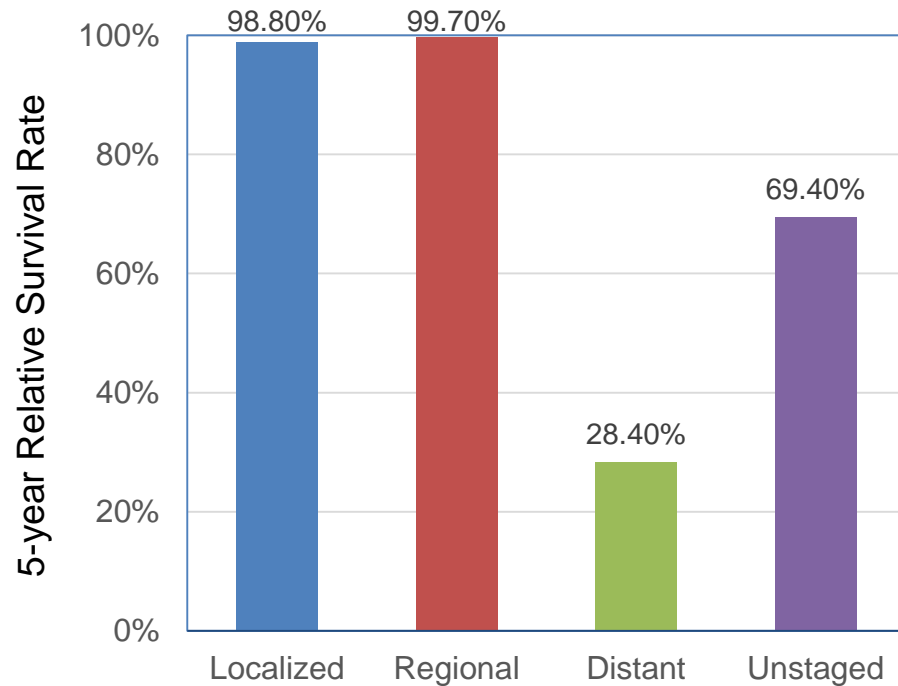


<sup>1</sup> Prostate Cancer includes first primary only (sequence number 0 or 1).

<sup>2</sup> The stage distribution is based on Summary Stage 2000

# Prostate Cancer<sup>1,2</sup>: Louisiana

## 5-Year Relative Survival by Stage<sup>2</sup>, Black Males, 2006-2012



<sup>1</sup> Prostate Cancer includes first primary only (sequence number 0 or 1).

<sup>2</sup> The stage distribution is based on Summary Stage 2000

# Data Sources

**Surveillance, Epidemiology, and End Results (SEER) Program** ([www.seer.cancer.gov](http://www.seer.cancer.gov)), SEER\*Stat Databases, National Cancer Institute, DCCPS, Surveillance Research Program, Surveillance Systems Branch, released April 2016, based on the November 2015 submission.

## **For Incidence:**

- Incidence - SEER 18 Regs Research Data + Hurricane Katrina Impacted Louisiana Cases, Nov 2015 Sub (2000-2013) <Katrina/Rita Population Adjustment>
- SEER\*DMS - LTR 1988-2013, June 7, 2016

## **For Mortality:**

- Mortality – all COD, aggregated with States, Total U.S. (1969-2013) <Katrina/Rita Population Adjustment>

## **For Survival:**

- Incidence - SEER 18 Regs Research Data + Hurricane Katrina Impacted Louisiana Cases, Nov 2015 Sub (1973-2013 varying)

# Acknowledgements

**Hospital cancer registries** (<http://louisianatumorregistry.lsuhs.edu/>)

**Louisiana Cancer Registrars' Association** (<http://www.lcra-usa.org/>)

**Physicians and staff members in:**

- Medical records offices
- Pathology laboratories
- Physician offices and clinics
- Hospice programs and nursing homes

**Regional and central offices of the Louisiana Tumor Registry**  
(<http://louisianatumorregistry.lsuhs.edu/regionalregistries.html>)

**School of Public Health, LSU Health Sciences Center–New Orleans**

**Louisiana Cancer and Lung Trust Fund Board**

**Coroners' offices**

# Sources of LTR Funding

- National Cancer Institute, SEER Program
- National Program of Cancer Registries, CDC
- Louisiana Health Care Services Division



# Editors

Xiangrong Li, MD, MSPH

Meichin Hsieh, PhD, MSPH, CTR

Lauren Maniscalco, MPH

Xiaocheng Wu, MD, MPH, CTR

# Contributors

Brent Mumphrey, BS

Tina Lefante, MPH

Lisa Pareti, BS, RHIT, CTR

Yong Yi, PhD, MS

# Questions?

**Contact:**

**LTR-info@lsuhsc.edu**

**or**

**504-568-5757**