

Louisiana Cancer Facts & Figures, Ovarian Cancer, 2016

Louisiana Tumor Registry

September, 2016

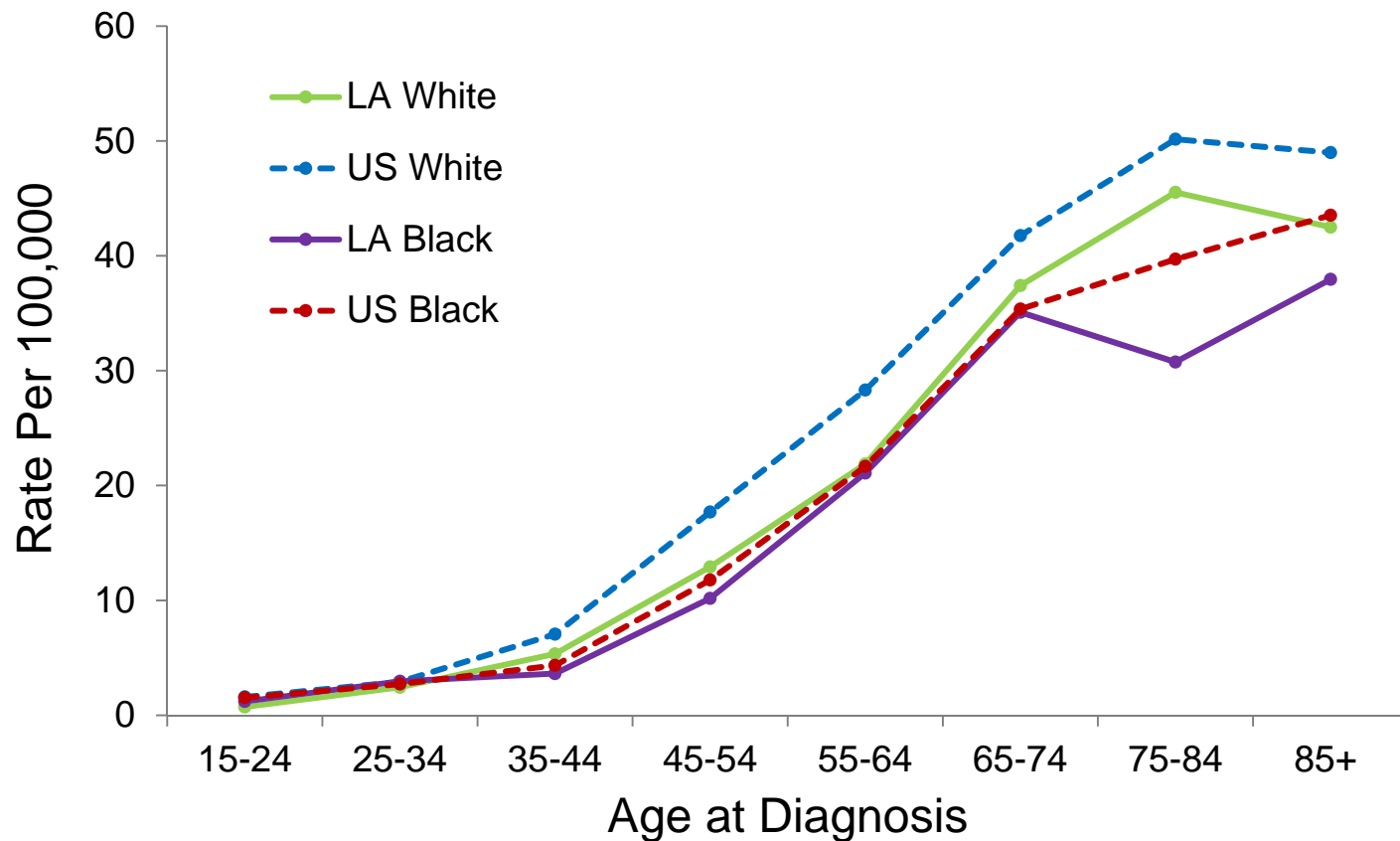
Ovarian Cancer

- Ovarian cancer was the 18th most common cancer in Louisiana and the 13th most common cancer in the U.S. from 2009 to 2013.¹
- From 2009 to 2013, ovarian cancer was the 15th leading cause of cancer death in Louisiana, and the 6th leading cause of cancer death in the U.S.¹.
- About 260 new ovarian cancers are expected to be diagnosed and about 180 patients are expected to die of ovarian cancer in Louisiana in 2016.²

1. Data source: NCI state cancer profile.

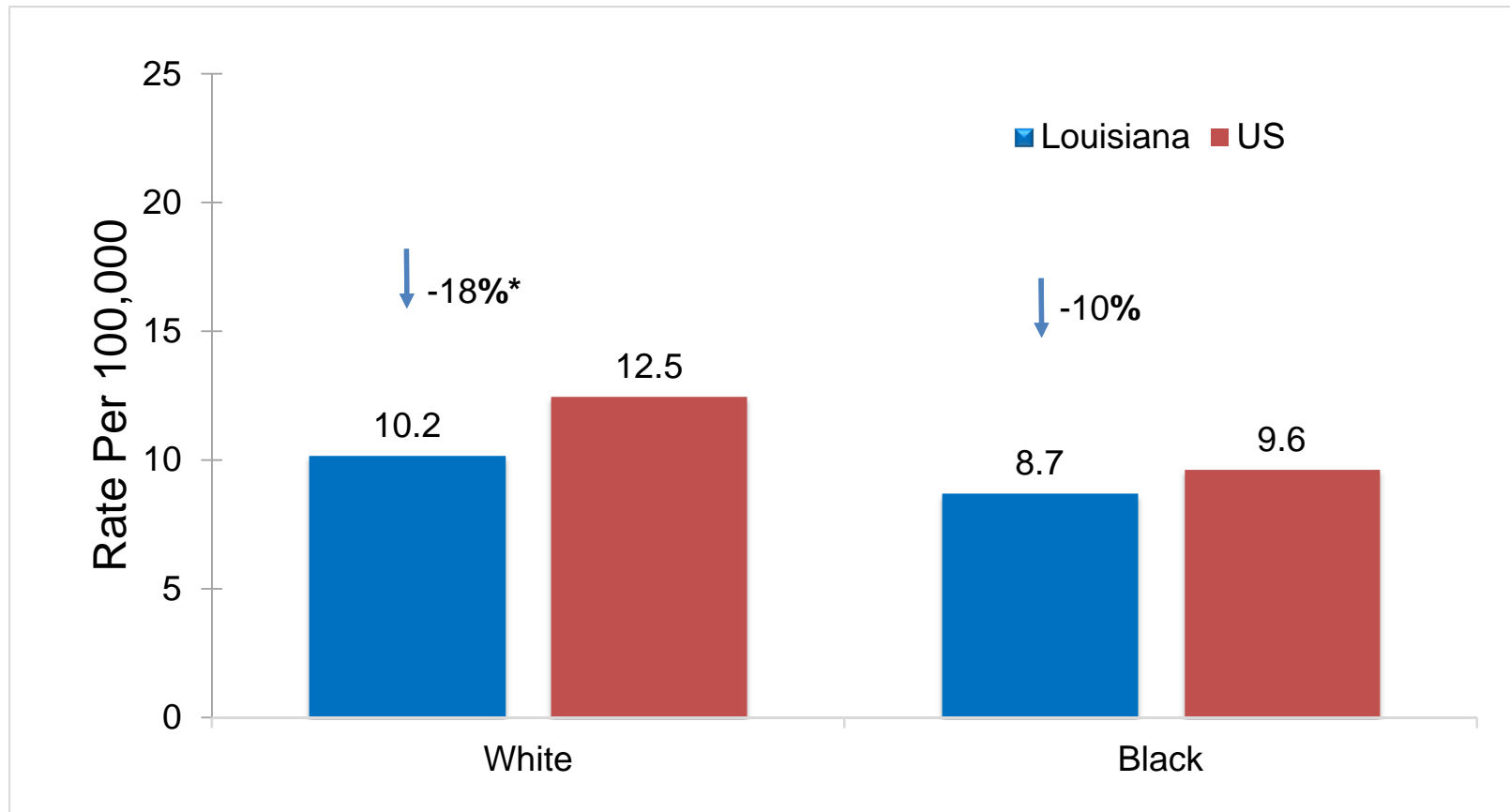
2. Data source: American Cancer Society, Cancer Facts & Figures 2016

Ovarian Cancer: Age-Specific Incidence Rates¹, Louisiana and the U.S.², 2009-2013



¹ Age-adjusted to the 2000 U.S. standard population. ² U.S. Data source: 18 SEER registries.

Ovarian Cancer Incidence Rates¹ Louisiana vs. U.S.², 2009-2013

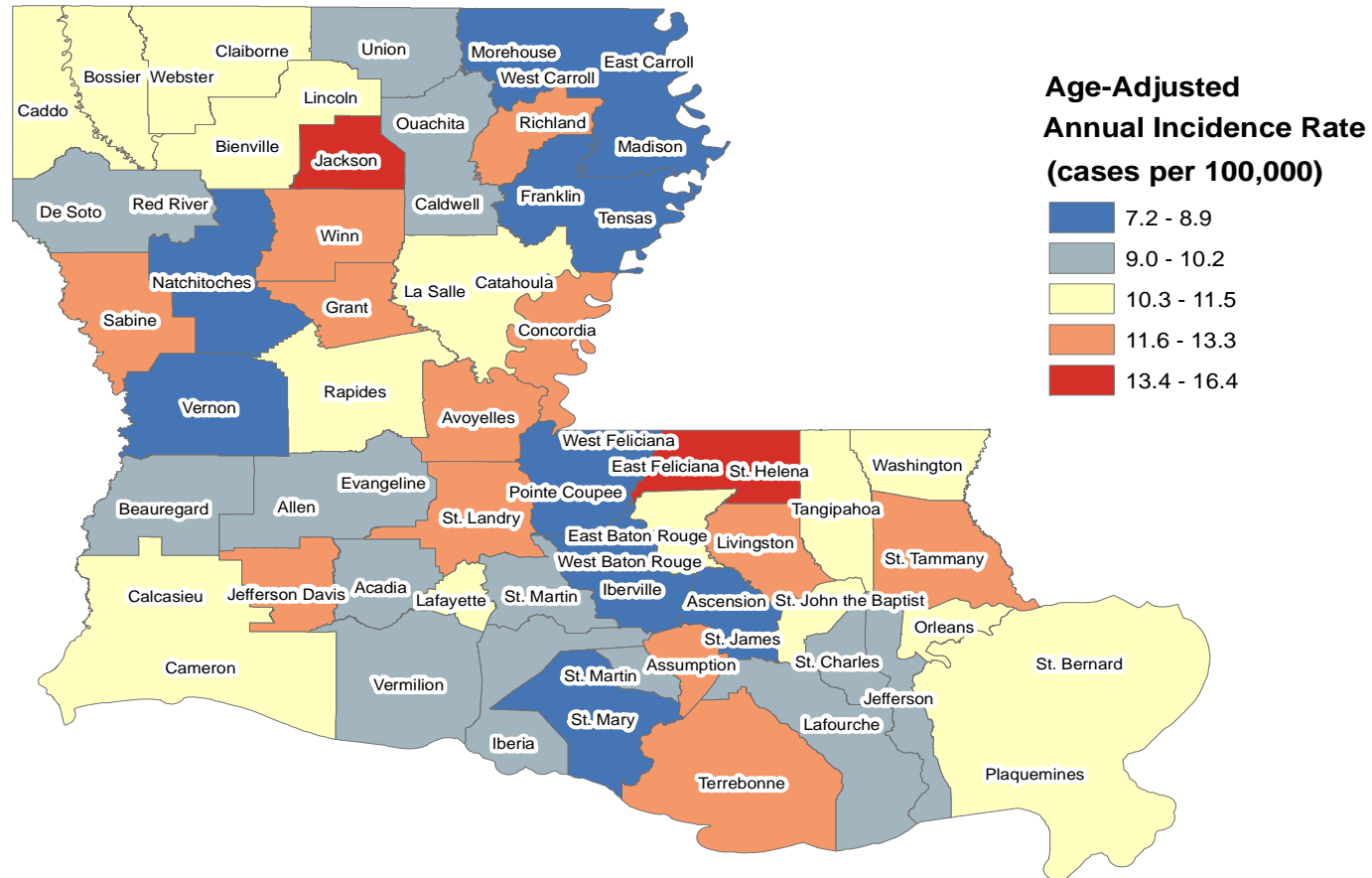


¹ Age-adjusted to the 2000 U.S. standard population.

² Data source: 18 SEER registries.

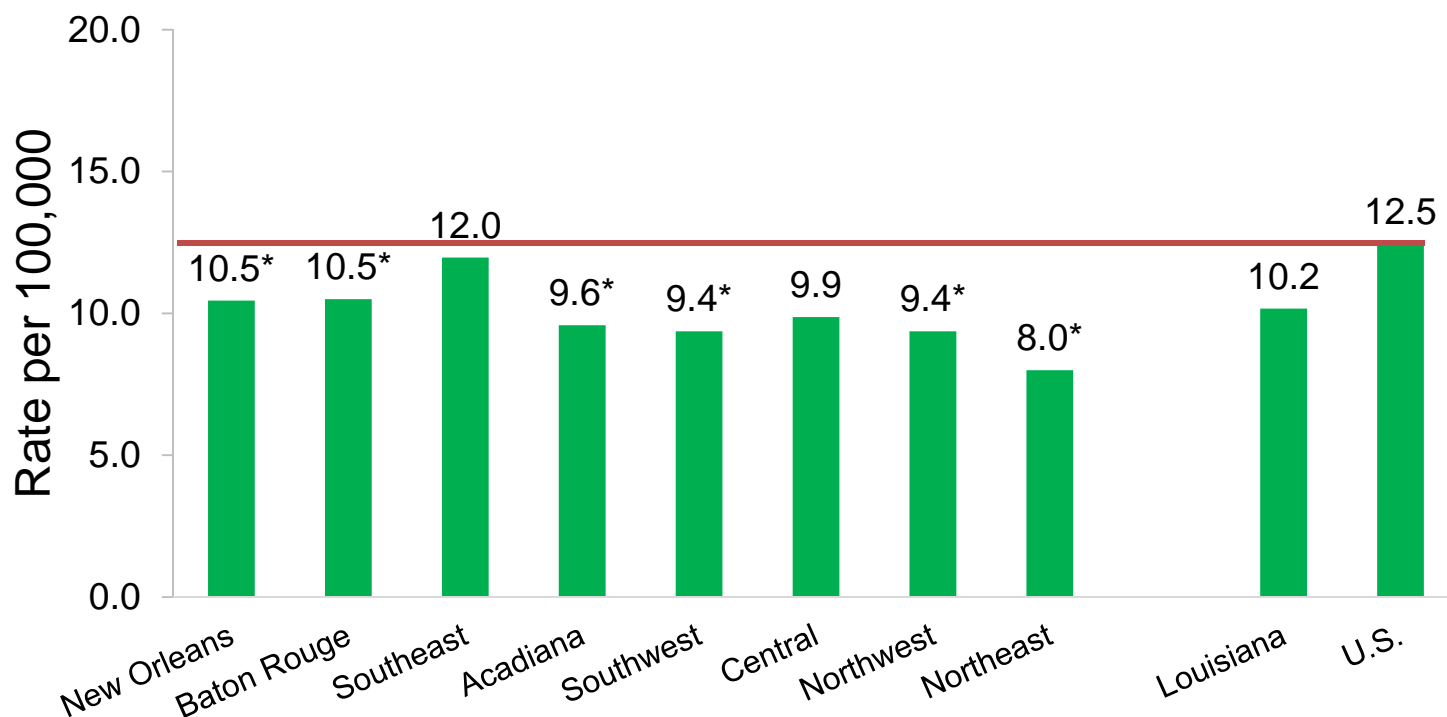
* Incidence rate of Louisiana is significantly different from that of the U.S.

Average Annual Incidence Rates for Ovarian Cancer Cases, Louisiana, 2000-2013



Notes:
 Created by Louisiana Tumor Registry on 12/8/2016.
 Counties with less than 16 cases were merged with neighboring counties using NY State Geographic Aggregation Tool (GAT).

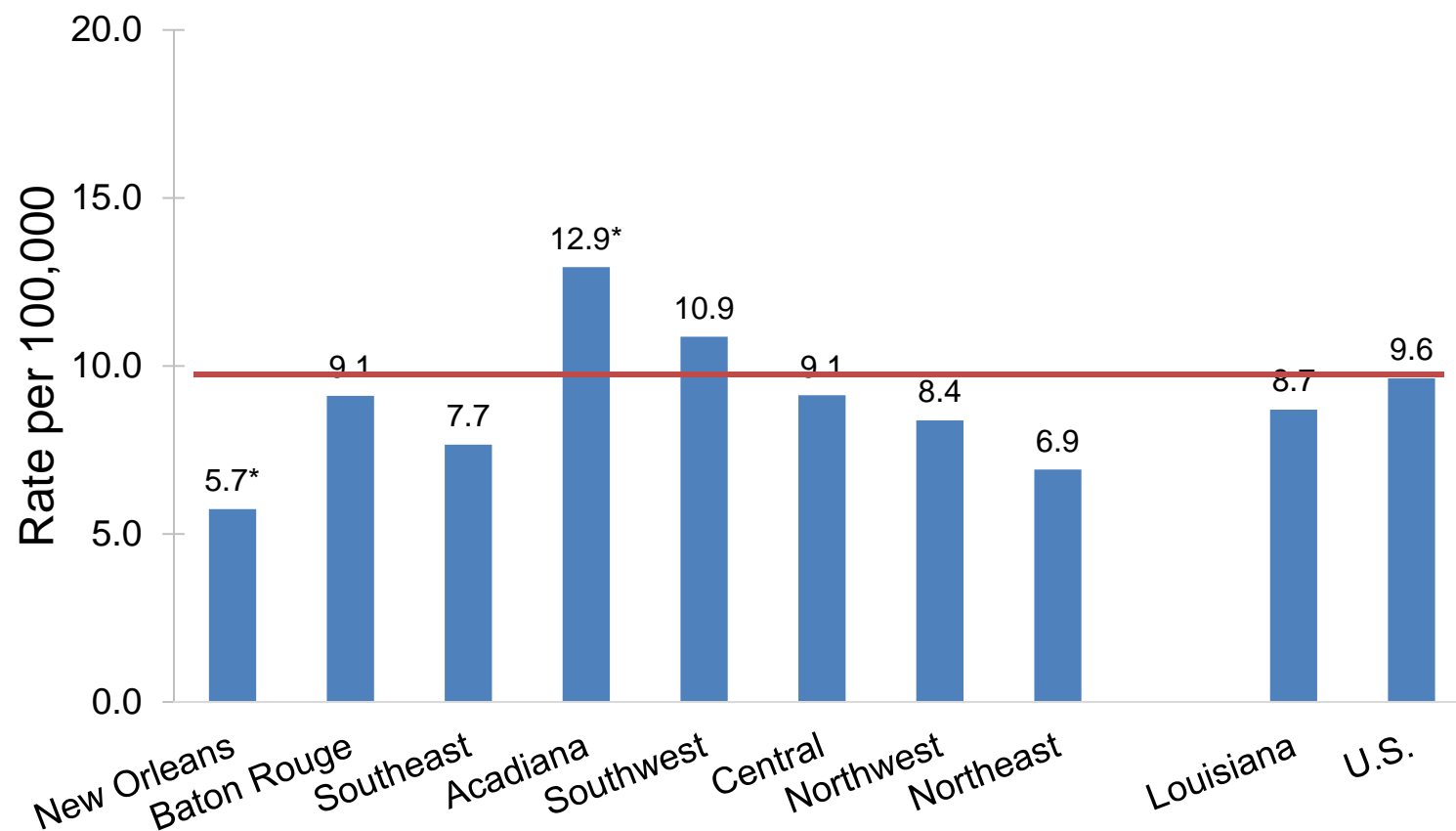
Ovarian Cancer Incidence Rates^{1,2} by Region: Louisiana, Whites, 2009-2013



¹ Age-adjusted to the 2000 U.S. standard population. ² Data source for U.S. was the 18 SEER registries.

* Incidence rate of regions/Louisiana is significantly different from that of the U.S.

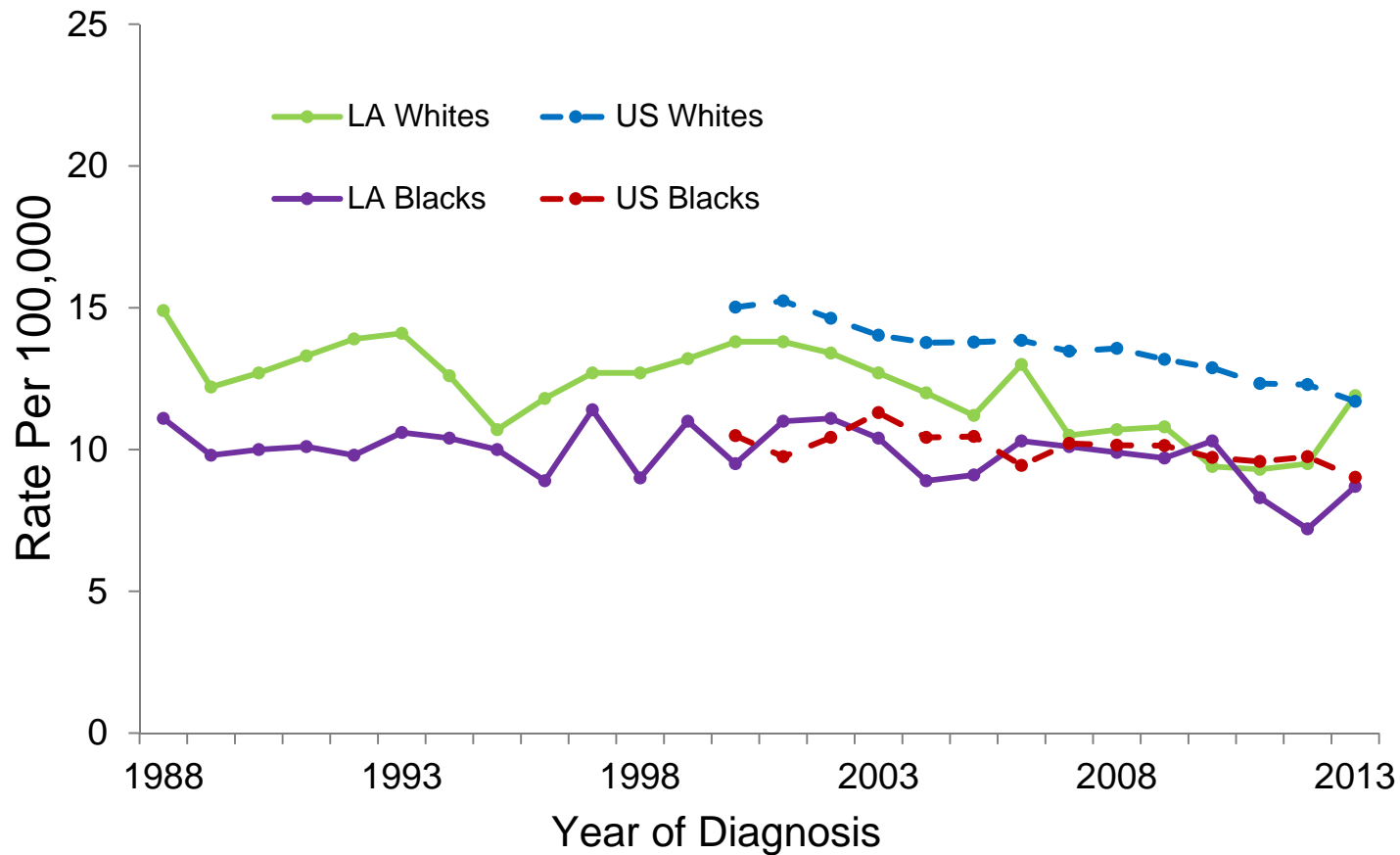
Ovarian Cancer Incidence Rates^{1,2} by Region: Louisiana, Blacks, 2009-2013



¹ Age-adjusted to the 2000 U.S. standard population. ² Data source for U.S. was the 18 SEER registries.

* Incidence rate of regions/Louisiana is significantly different from that of the U.S.

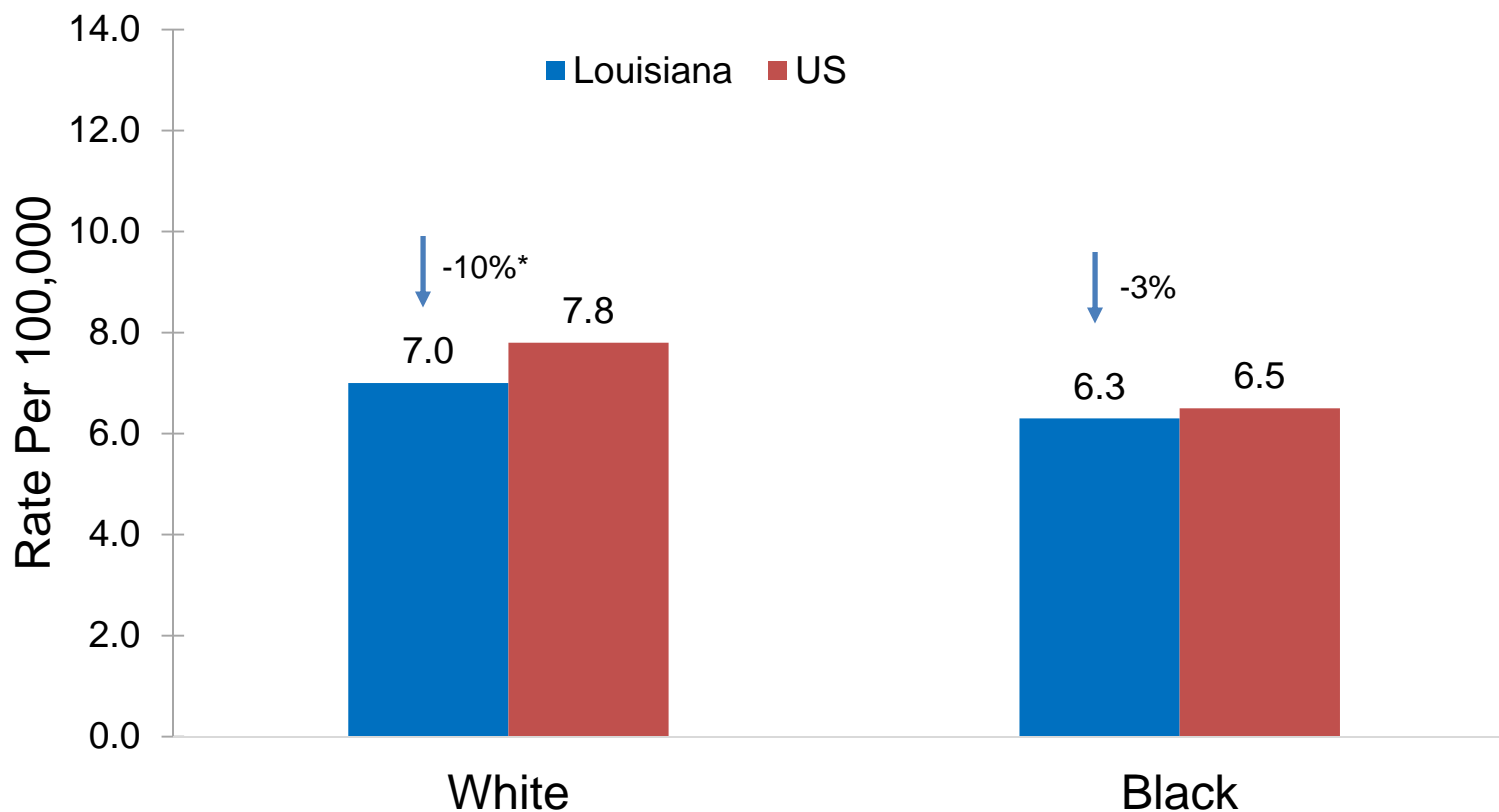
Ovarian Cancer: Trends of Incidence Rates¹, Louisiana and the U.S.², 1988-2013



¹ Age-adjusted to the 2000 U.S. standard population.

² U.S. data source: 18 SEER registries.

Ovarian Cancer Mortality Rates¹ Louisiana vs. U.S.,² 2009-2013

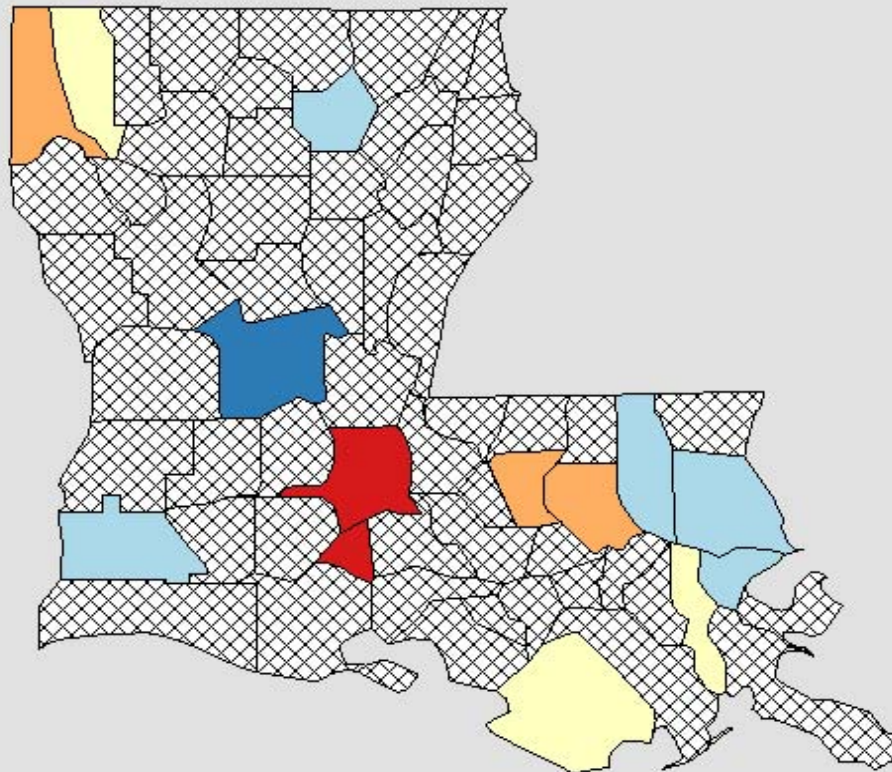


¹ Age-adjusted to the 2000 U.S. standard population.

² Mortality data source: National Center of Health Statistics (NCHS).

*The rate of Louisiana is significantly different from that of the U.S.

Death Rates for Louisiana Ovary, 2009 - 2013 All Races (includes Hispanic), Female, All Ages



Age-Adjusted
Annual Death Rate
(Deaths per 100,000)

[Quantile Interval](#)



Suppressed*

United States
Rate (95% C.I.)
7.5 (7.5 - 7.6)

Louisiana
Rate (95% C.I.)
6.8 (6.3 - 7.2)

Notes:

Created by statecancerprofiles.cancer.gov on 09/22/2016 4:54 pm.

[State Cancer Registries](#) may provide more current or more local data.

Data presented on the State Cancer Profiles Web Site may differ from statistics reported by the State Cancer Registries ([for more information](#)).

Source: Death data provided by the [National Vital Statistics System](#) public use data file. Death rates calculated by the National Cancer Institute using

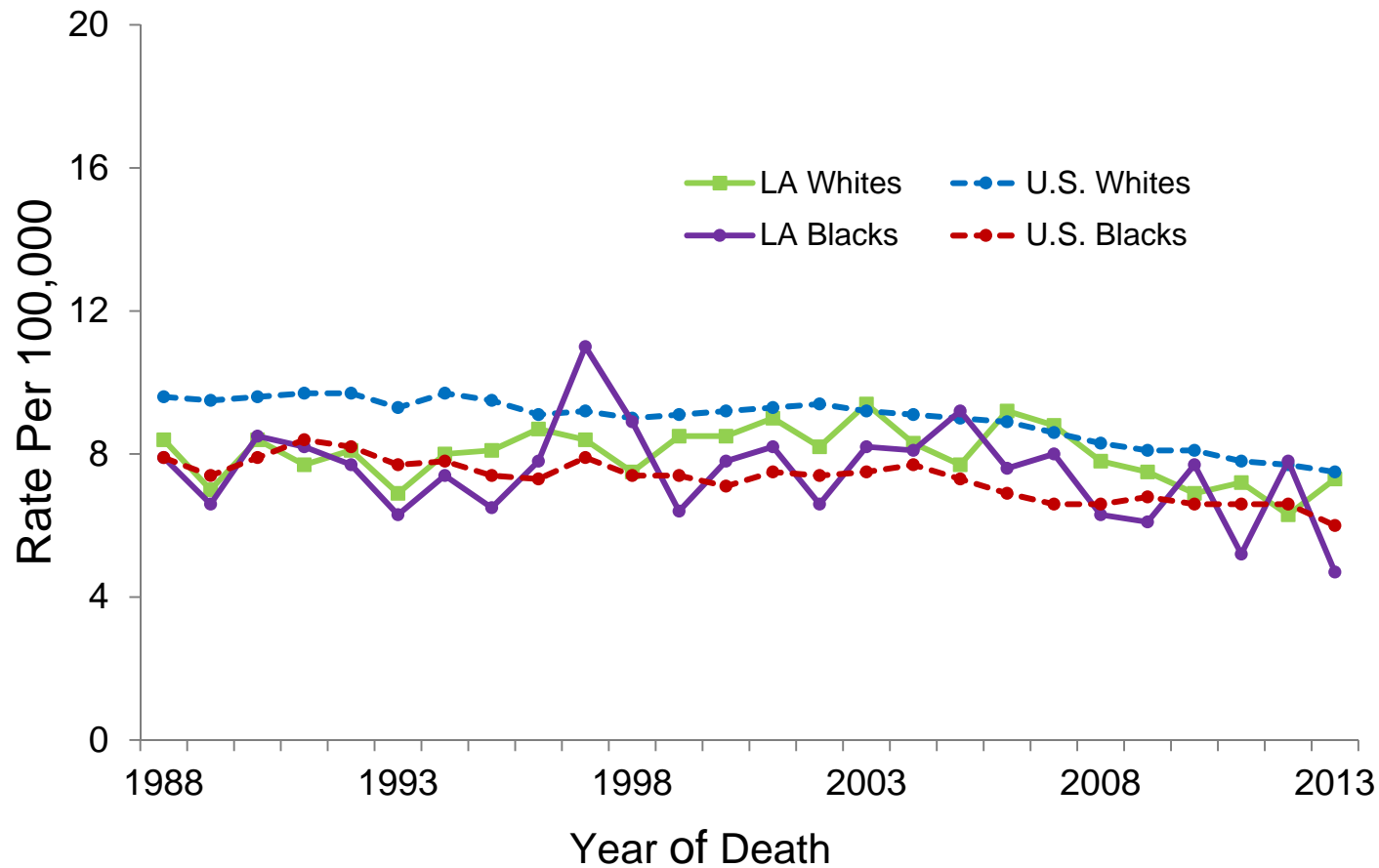
[SEER*Stat](#). Death rates (deaths per 100,000 population per year) are age-adjusted to the [2000 US standard population](#) (19 age groups: <1, 1-4, 5-9, ... , 80-84, 85+). The Healthy People 2020 goals are based on rates adjusted using different methods but the differences should be minimal.

Population counts for denominators are based on the Census [1969-2014 US Population Data](#) File as modified by NCI.

* Data have been [suppressed](#) to ensure confidentiality and stability of rate estimates. Data is currently being suppressed if there are fewer than 16 counts for the time period.

** Data have been [suppressed](#) for states with a population below 50,000 per sex combination for American Indian/Alaska Native or Asian/Pacific Islanders because of concerns regarding the relatively small size of these populations in some states.

Ovarian Cancer: Trends of Mortality Rates^{1,2} Louisiana and the U.S., 1988-2013

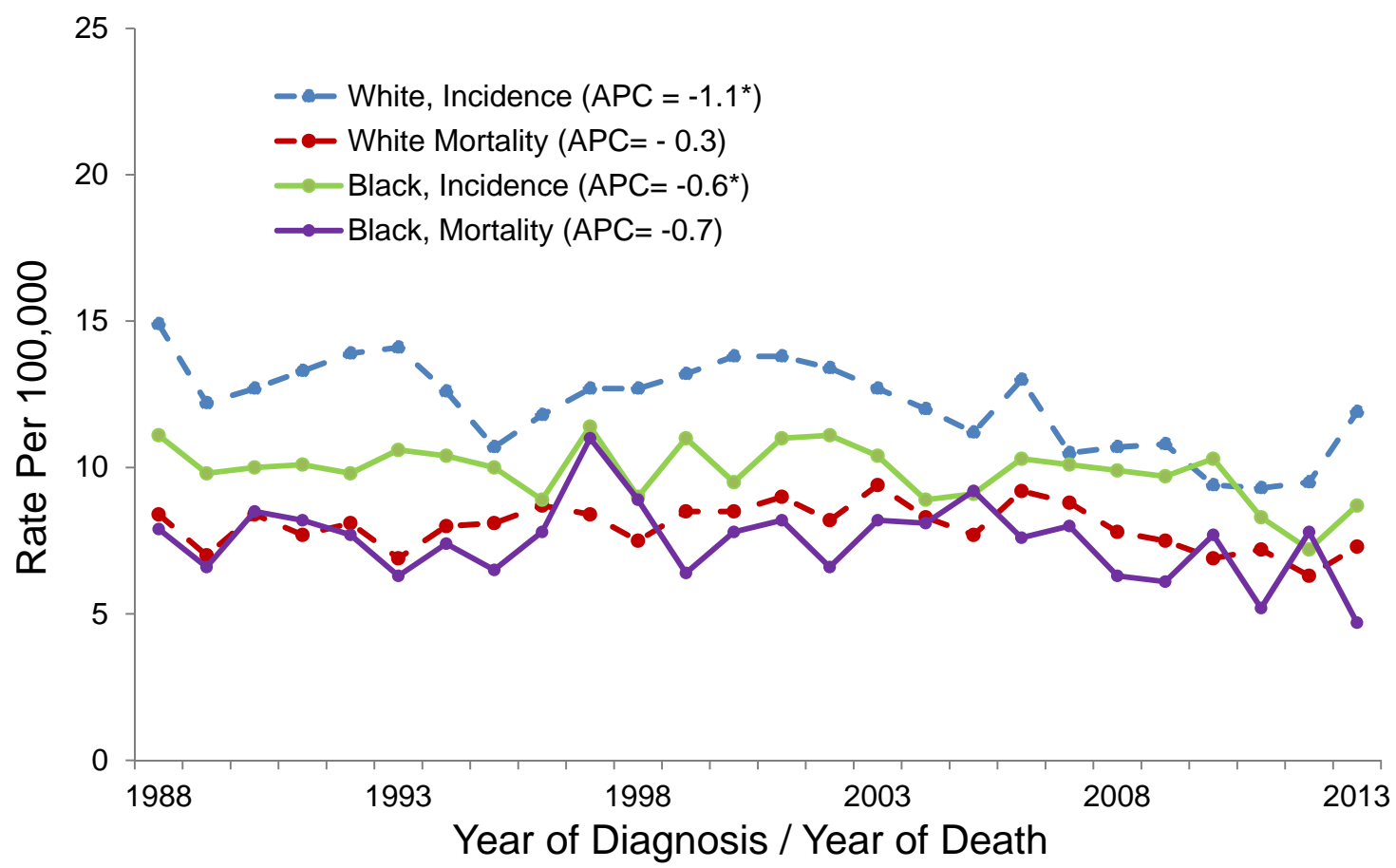


¹ Age-adjusted to the 2000 U.S. standard population.

² Data source: National Center of Health Statistics (NCHS).

Ovarian Cancer: Louisiana

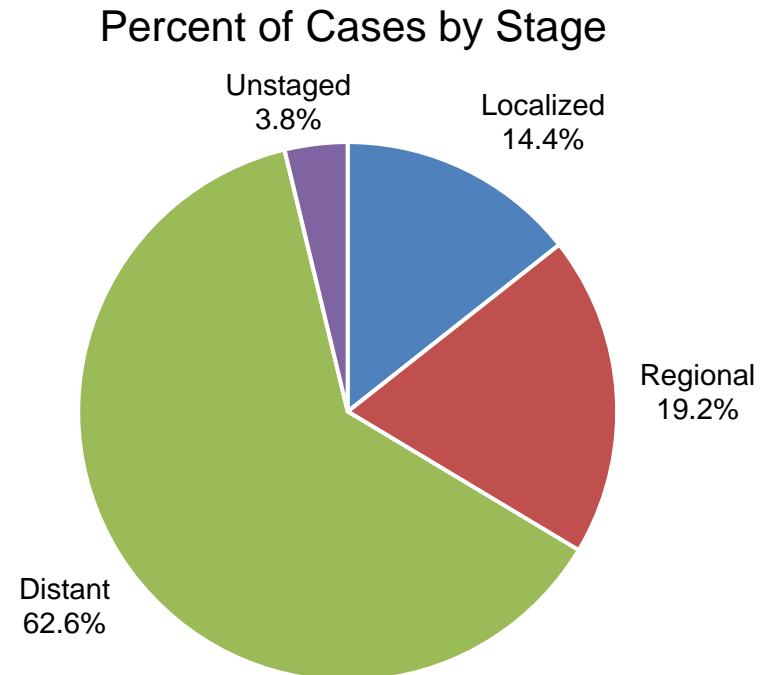
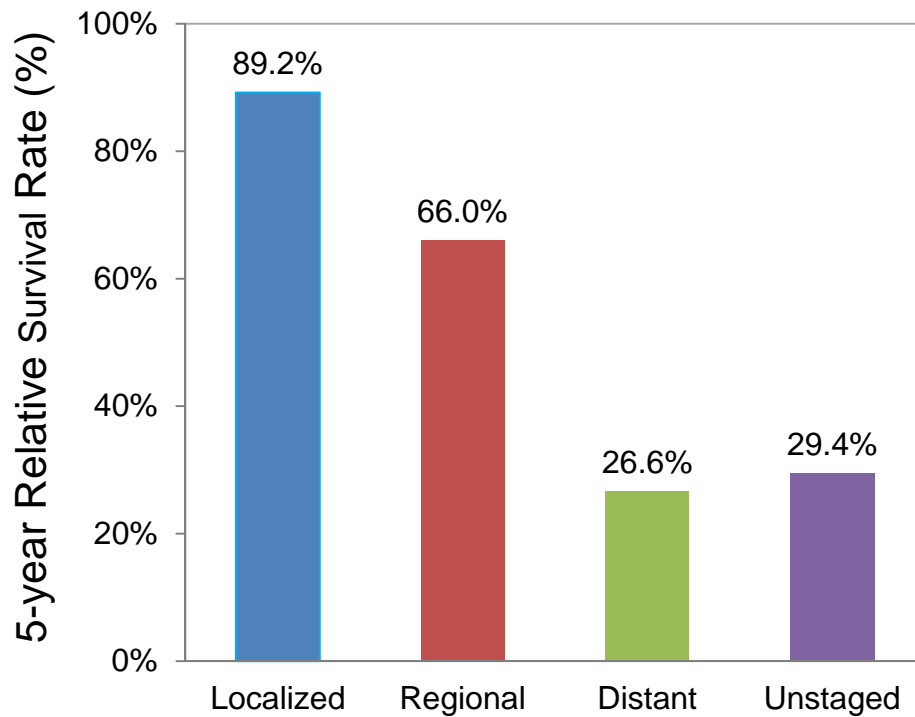
Trends of Incidence and Mortality Rates, 1988-2013



*APCs were calculated using weighted least squares method

Ovarian Cancer : Louisiana

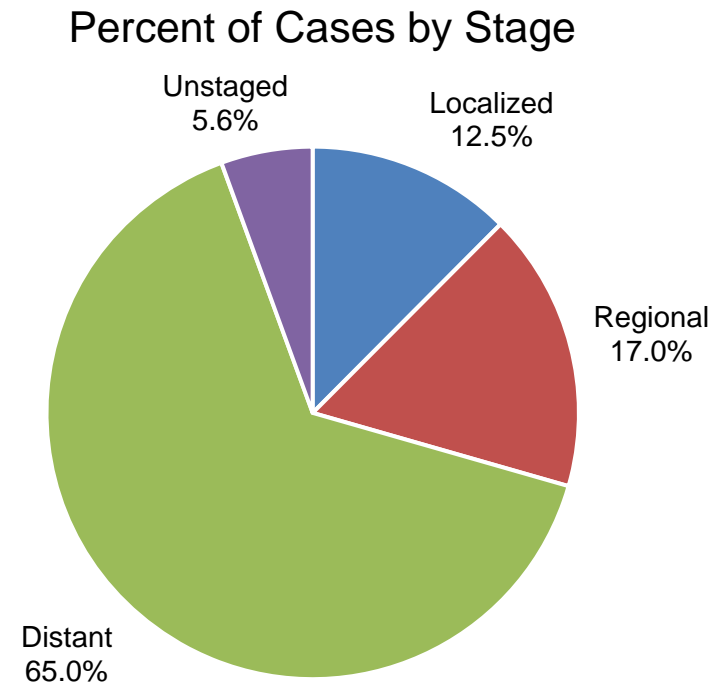
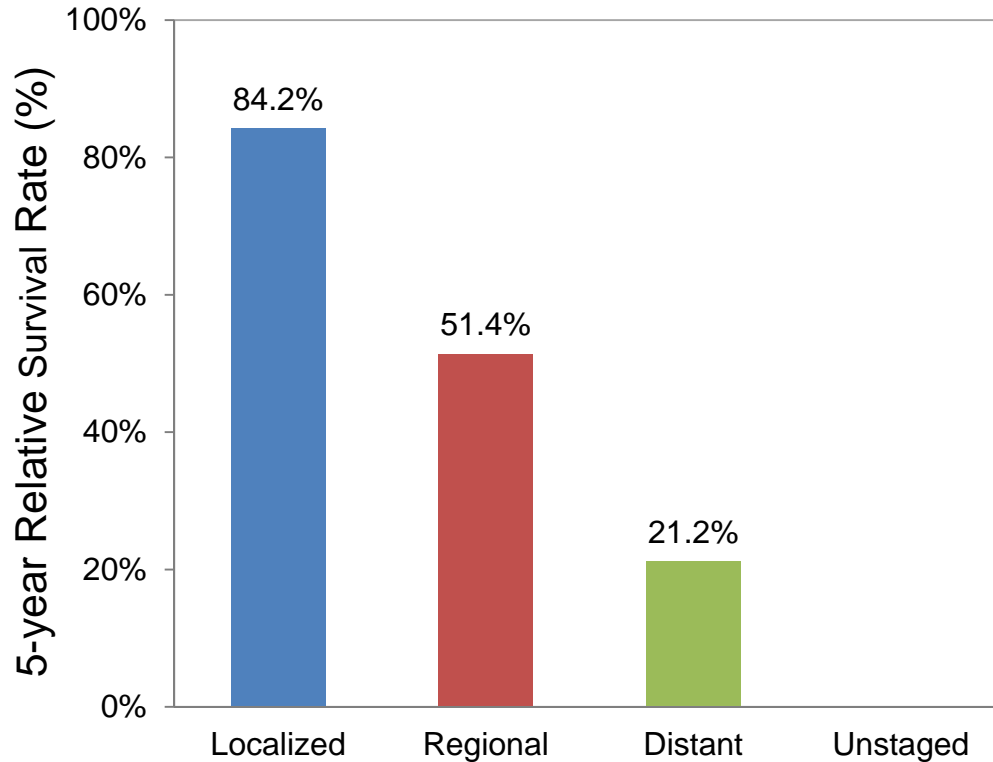
5-Year Relative Survival by Stage¹, Whites, 2006-2012



¹ The stage distribution is based on Derived Summary Stage 2000.

Ovarian Cancer : Louisiana

5-Year Relative Survival by Stage¹, Blacks, 2006-2012



¹ The stage distribution is based on Derived Summary Stage 2000.
The 5-year Relative Survival rate for Unstaged could not be calculated.

Data Sources

Surveillance, Epidemiology, and End Results (SEER) Program (www.seer.cancer.gov), SEER*Stat Databases, National Cancer Institute, DCCPS, Surveillance Research Program, Surveillance Systems Branch, released April 2016, based on the November 2015 submission.

For Incidence:

- Incidence - SEER 18 Regs Research Data + Hurricane Katrina Impacted Louisiana Cases, Nov 2015 Sub (2000-2013) <Katrina/Rita Population Adjustment>
- SEER*DMS - LTR 1988-2013, June 7, 2016

For Mortality:

- mortality – all COD, aggregated with States, Total U.S. (1969-2013) <Katrina/Rita Population Adjustment>

For Survival:

- Incidence - SEER 18 Regs Research Data + Hurricane Katrina Impacted Louisiana Cases, Nov 2015 Sub (1973-2013 varying)

Acknowledgements

- **Hospital cancer registries** (<http://louisianatumorregistry.lsuhs.edu/>)
- **Louisiana Cancer Registrars' Association** (<http://www.lcra-usa.org/>)
- **Physicians and staff members in:**
 - Medical records offices
 - Pathology laboratories
 - Physician offices and clinics
 - Hospice programs and nursing homes
- **Regional and central offices of the Louisiana Tumor Registry**
(<http://louisianatumorregistry.lsuhs.edu/regionalregistries.html>)
- **School of Public Health, LSU Health Sciences Center–New Orleans**
- **Louisiana Cancer and Lung Trust Fund Board**
- **Coroners' offices**

Sources of LTR Funding

- National Cancer Institute, SEER Program
- National Program of Cancer Registries, CDC
- Louisiana Health Care Services Division

Editors

Yong Yi, PhD, MS

Meichin Hsieh, PhD, MSPH, CTR

Lauren Maniscalco, MPH

Xiaocheng Wu, MD, MPH, CTR

Contributors

Xiangrong Li, MD, MSPH

Brent Mumphrey, BS

Tina Lefante, MPH

Lisa Pareti, BS, RHIT, CTR

Questions?

Contact:

LTR-info@lsuhsc.edu

or

504-568-5757