

Louisiana Cancer Facts & Figures, Oral Cavity and Pharynx Cancer, 2016

Louisiana Tumor Registry

September, 2016

Oral Cavity and Pharynx Cancer*

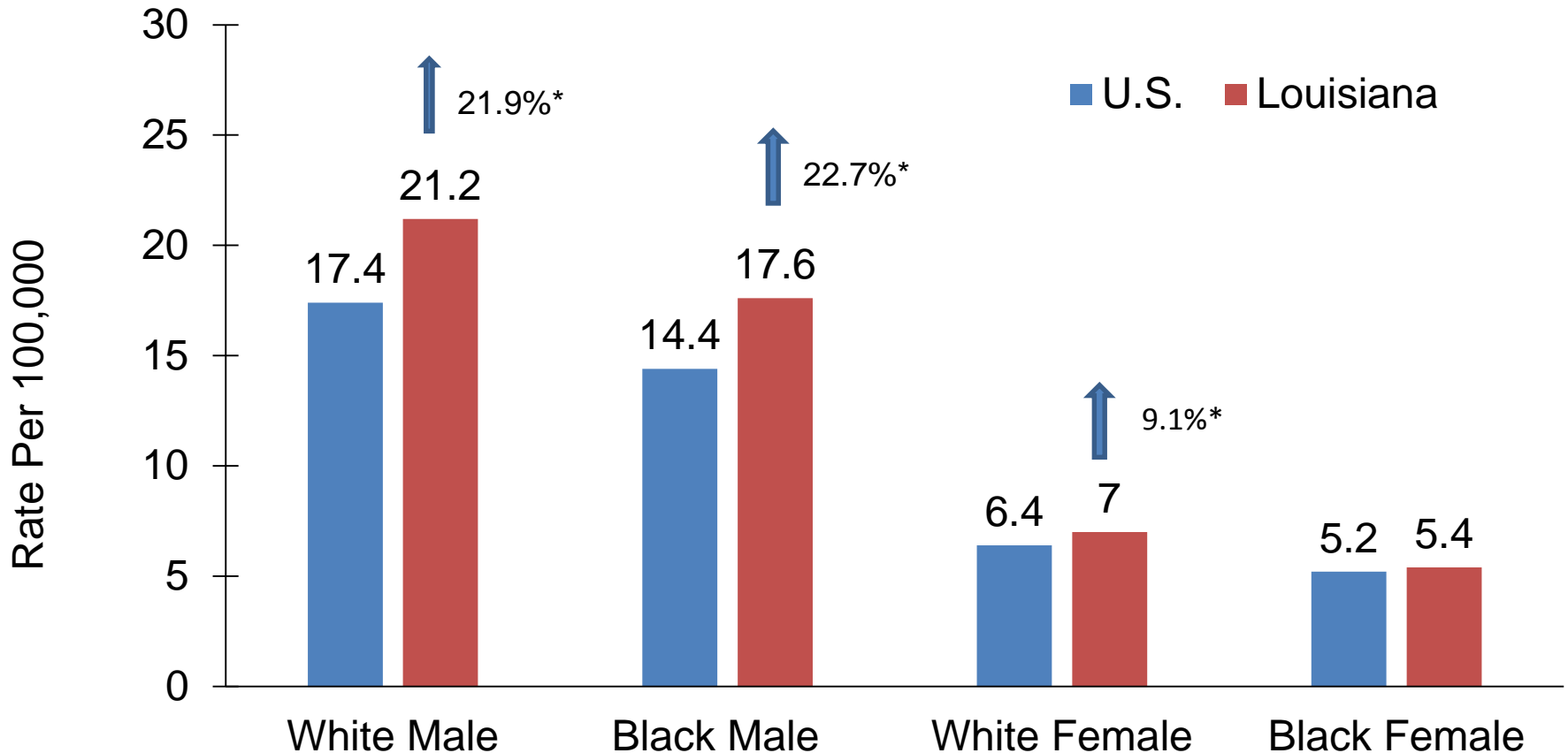
- Oral cavity and pharynx cancer was the 12th most commonly diagnosed cancer in Louisiana and the 14th in U.S.¹
- It was the 17th leading cause of cancer death in Louisiana and the 18th in U.S.¹
- About 730 new oral cavity and pharynx cancer cases are expected to be diagnosed and about 170 persons are expected to die of this cancer in Louisiana in 2016.²

1. Data source: Centers for Disease Control and Prevention

2. Data source: American Cancer Society, Cancer Facts & Figures 2016

* ICD-O-3/WHO 2008 code: C000-C009, C019-C029, C079-C089, C040-C049, C030-C039, C050-C059, C060-C069, C110-C119, C090-C099, C100-C109, C129, C130-C139, C140, C142, C148; excluding ICD-O-3 histology (type): 9050-9055, 9140, 9590-9992

Oral Cavity and Pharynx: Incidence Rates¹, Louisiana vs. US,² 2009-2013

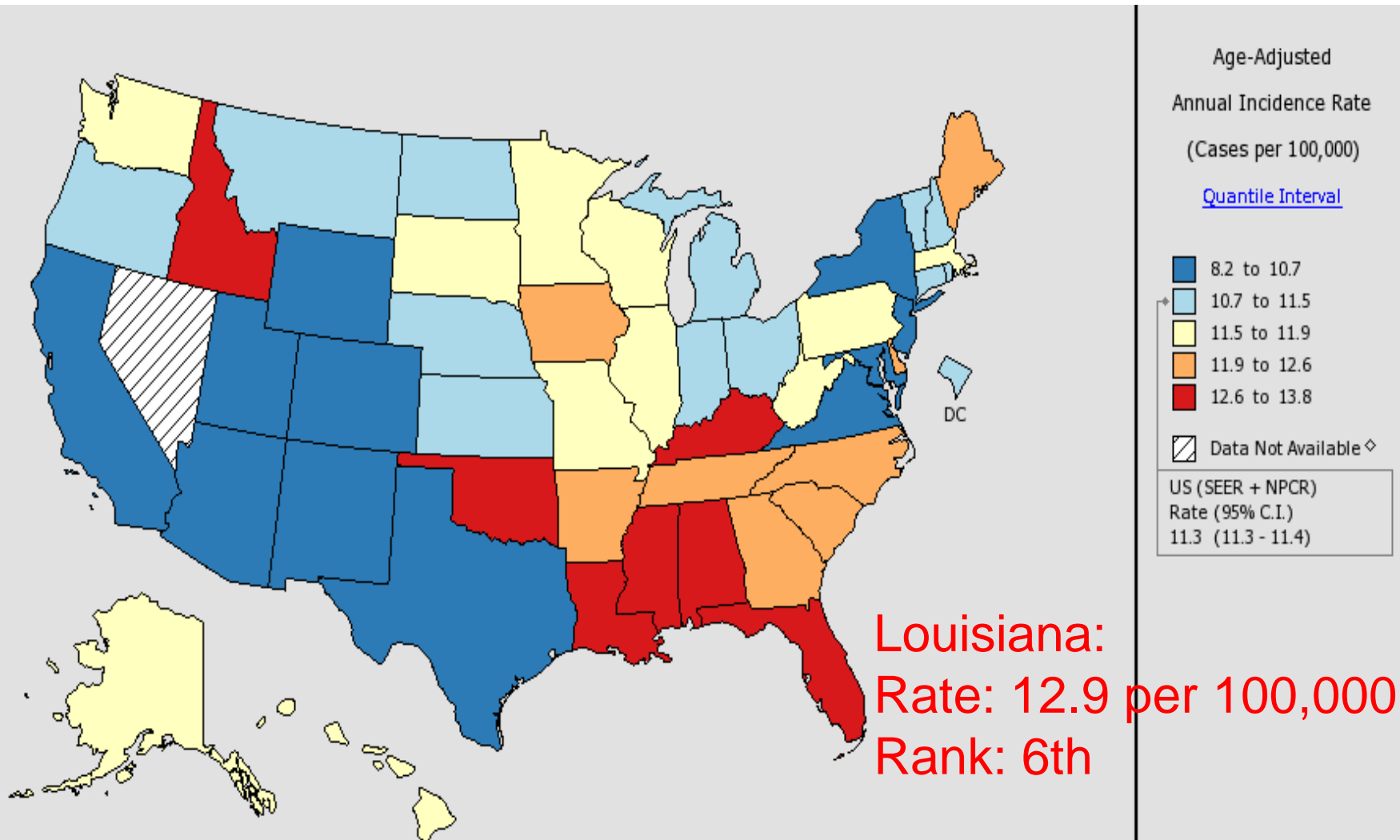


¹ Age-adjusted to the 2000 U.S. standard population.

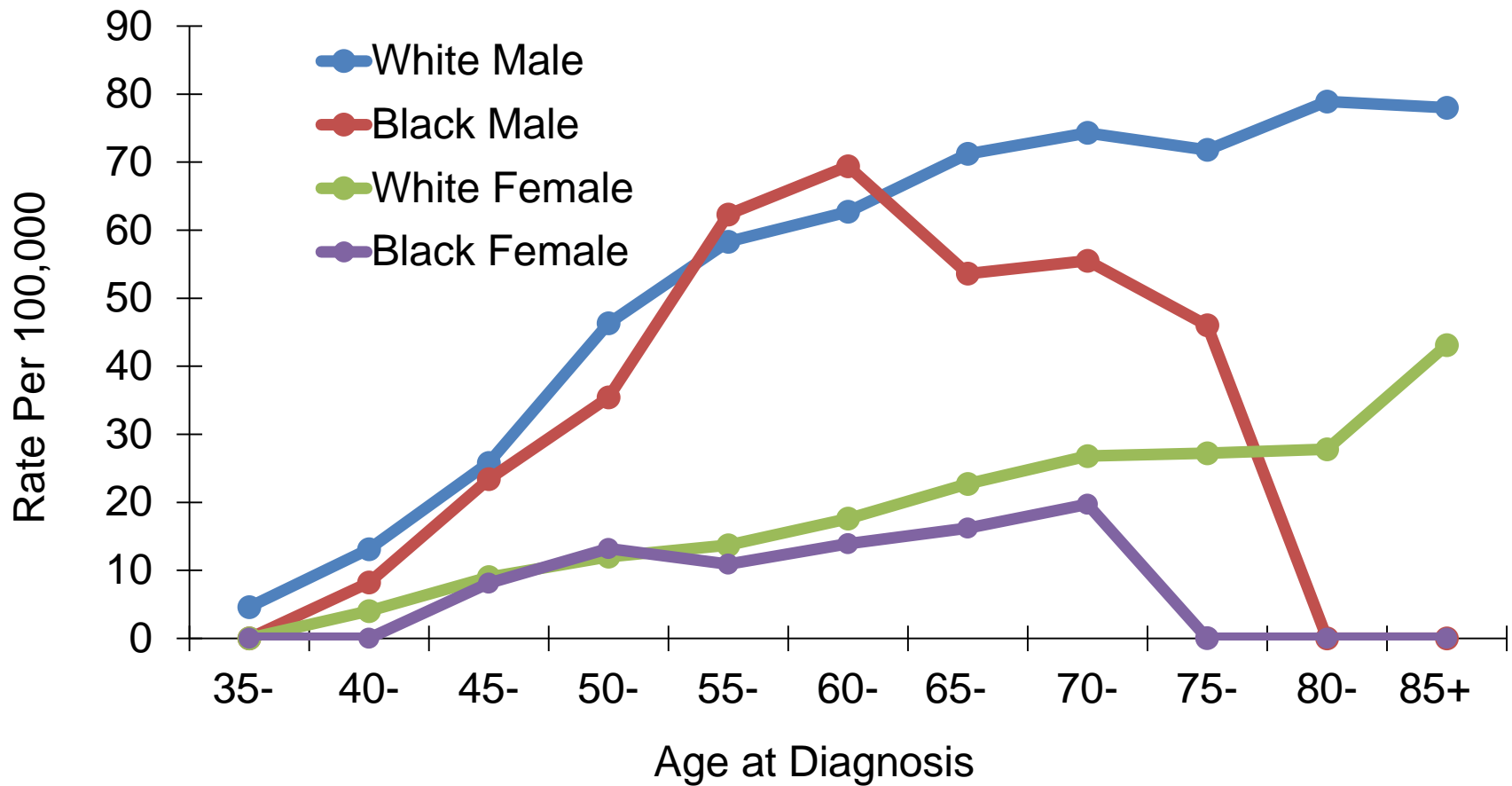
² Incidence data source: 18 SEER registries.

* Incidence rate of Louisiana is significantly different from that of the U.S.

Incidence Rates of Oral Cavity and Pharynx Cancer in the U.S., All Races, Both Sexes, 2009-2013

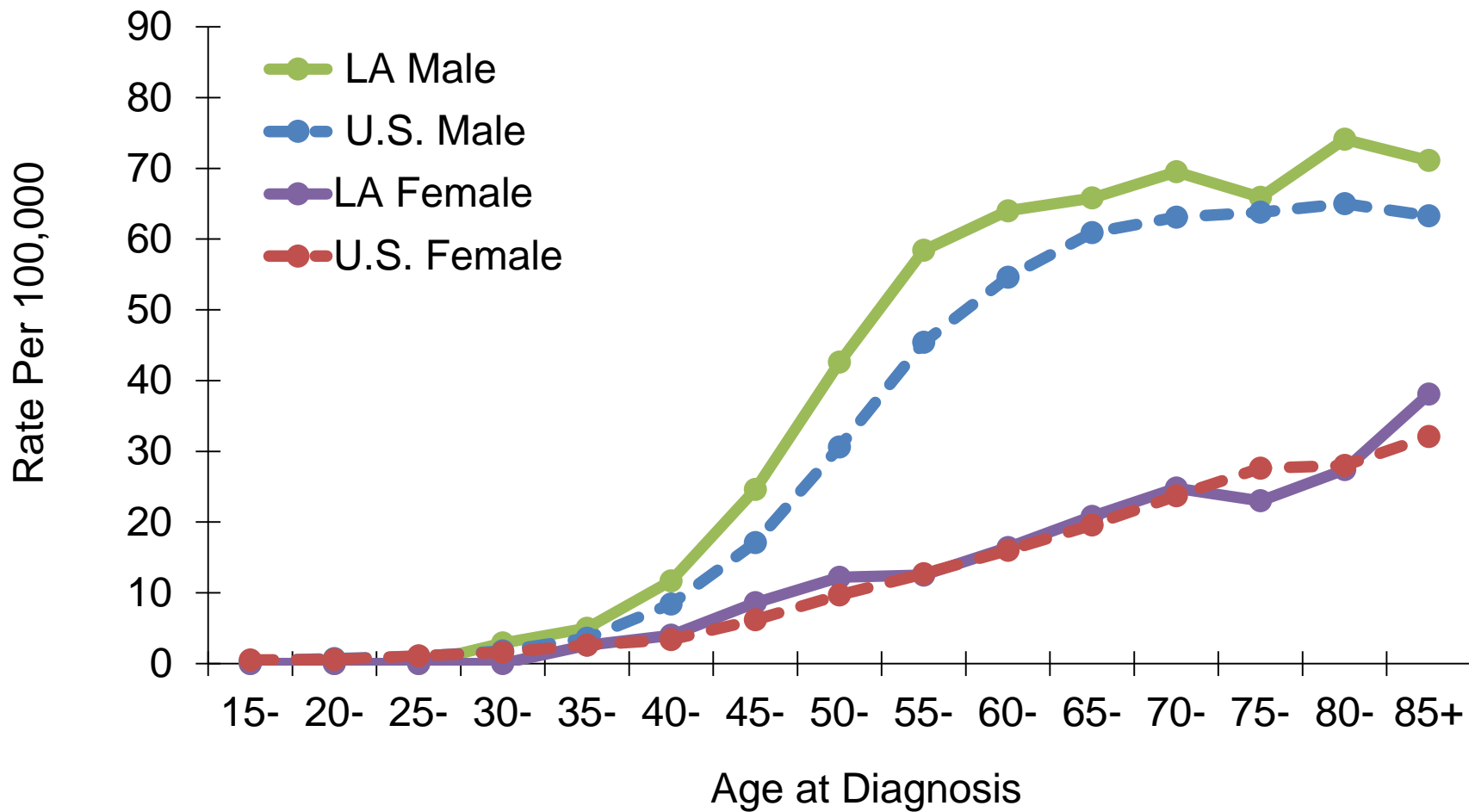


Oral Cavity and Pharynx Cancer: Age-Specific Incidence Rates Louisiana, 2009-2013



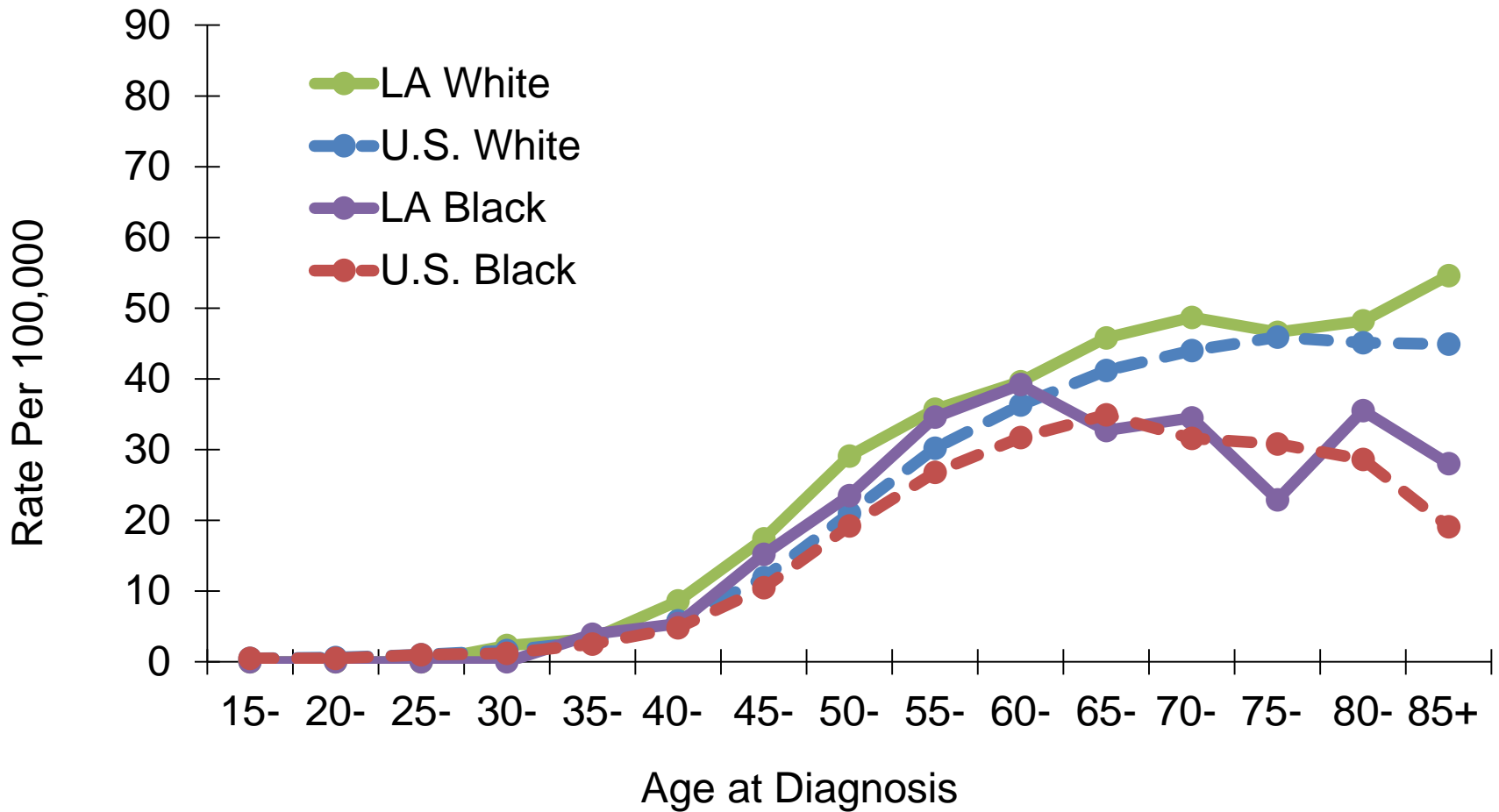
U.S. data source: 18 SEER registries.

Oral Cavity and Pharynx Cancer: Age-Specific Incidence Rates by Gender, 2009-2013



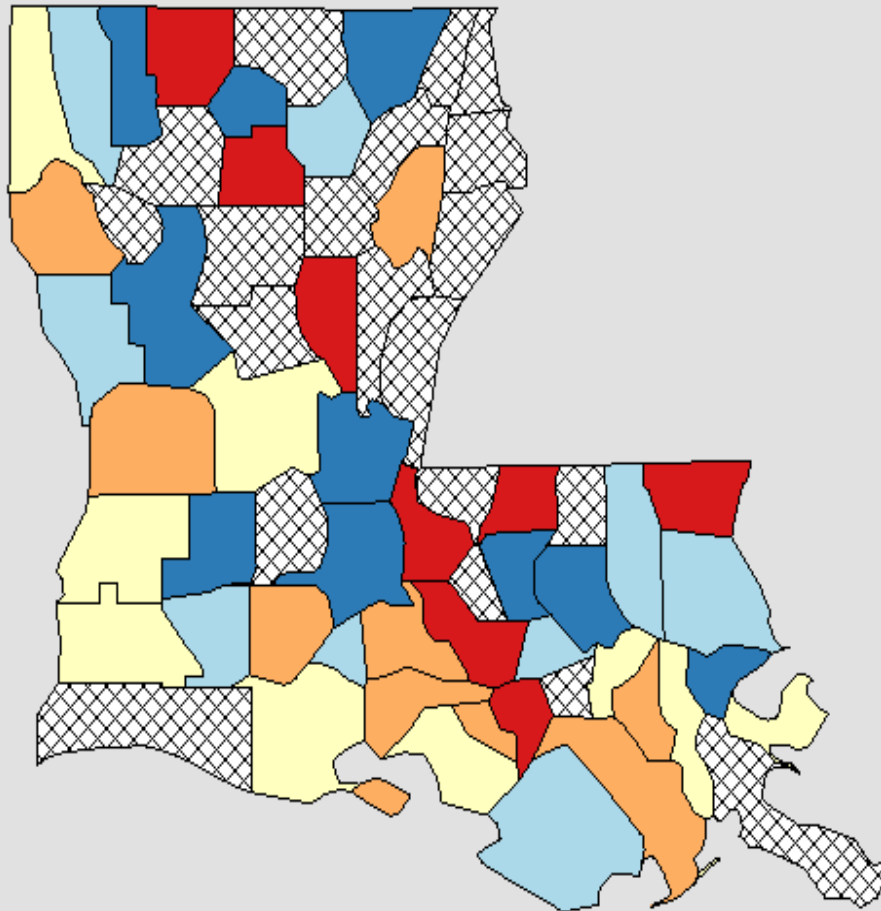
U.S. data source: 18 SEER registries.

Oral Cavity and Pharynx Cancer: Age-Specific Incidence Rates by Race, 2009-2013



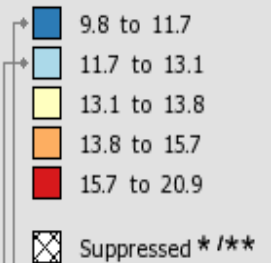
U.S. data source: 18 SEER registries.

Incidence Rates of Oral Cavity and Pharynx Cancer in Louisiana, All Races, Both Sexes, 2009-2013



Age-Adjusted
Annual Incidence Rate
(Cases per 100,000)

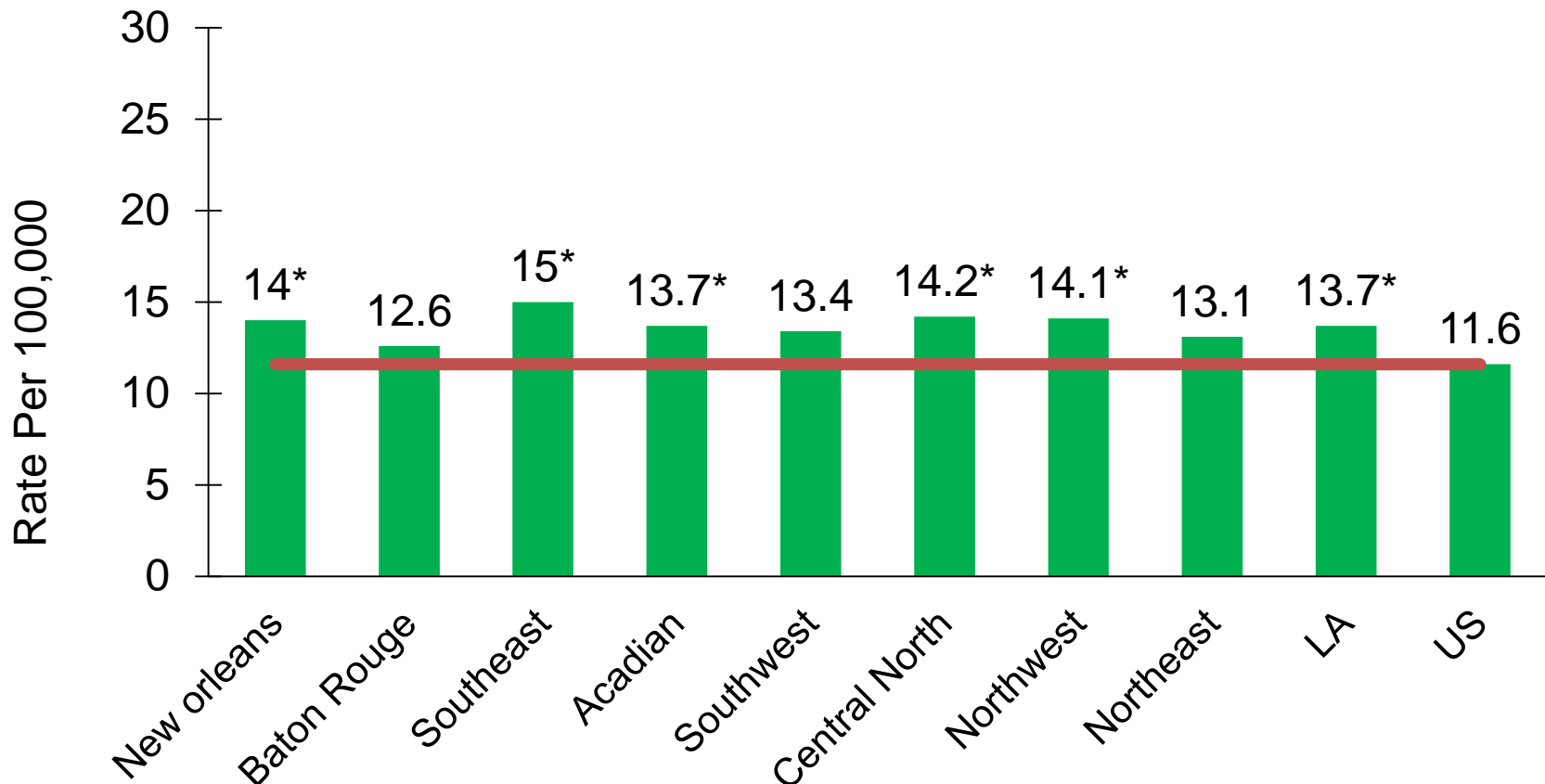
[Quantile Interval](#)



US (SEER + NPCR)
Rate (95% C.I.)
11.3 (11.3 - 11.4)

Louisiana
Rate (95% C.I.)
12.9 (12.5 - 13.4)

Oral Cavity and Pharynx Cancer Incidence Rates^{1,2} by Region: Louisiana, Whites, 2009-2013

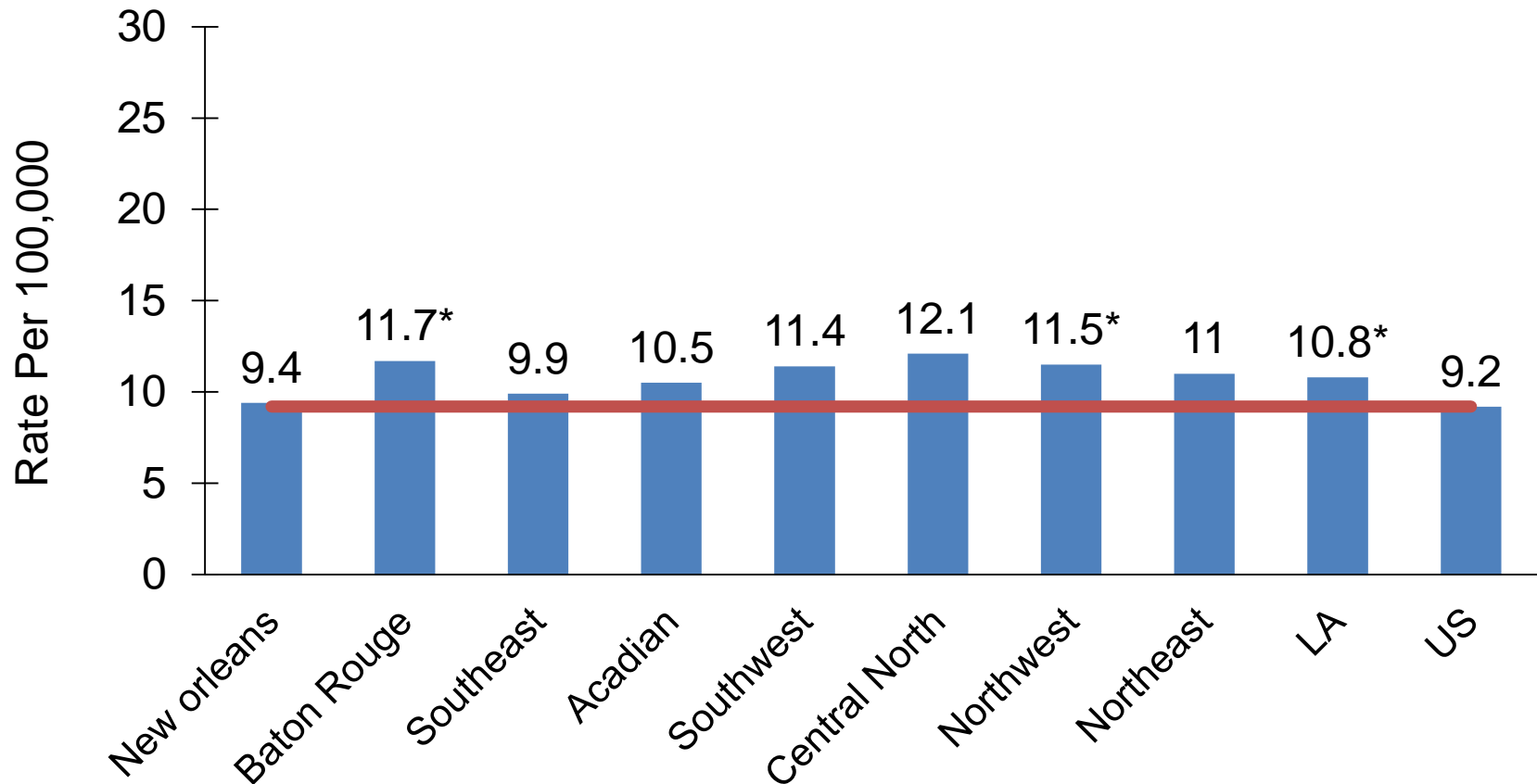


¹ Age-adjusted to the 2000 U.S. standard population.

² Data source for U.S. was the 18 SEER registries.

* Incidence rate of regions/Louisiana is significantly different from that of the US.

Oral Cavity and Pharynx Cancer Incidence Rates^{1,2} by Region, Louisiana, Blacks, 2009-2013

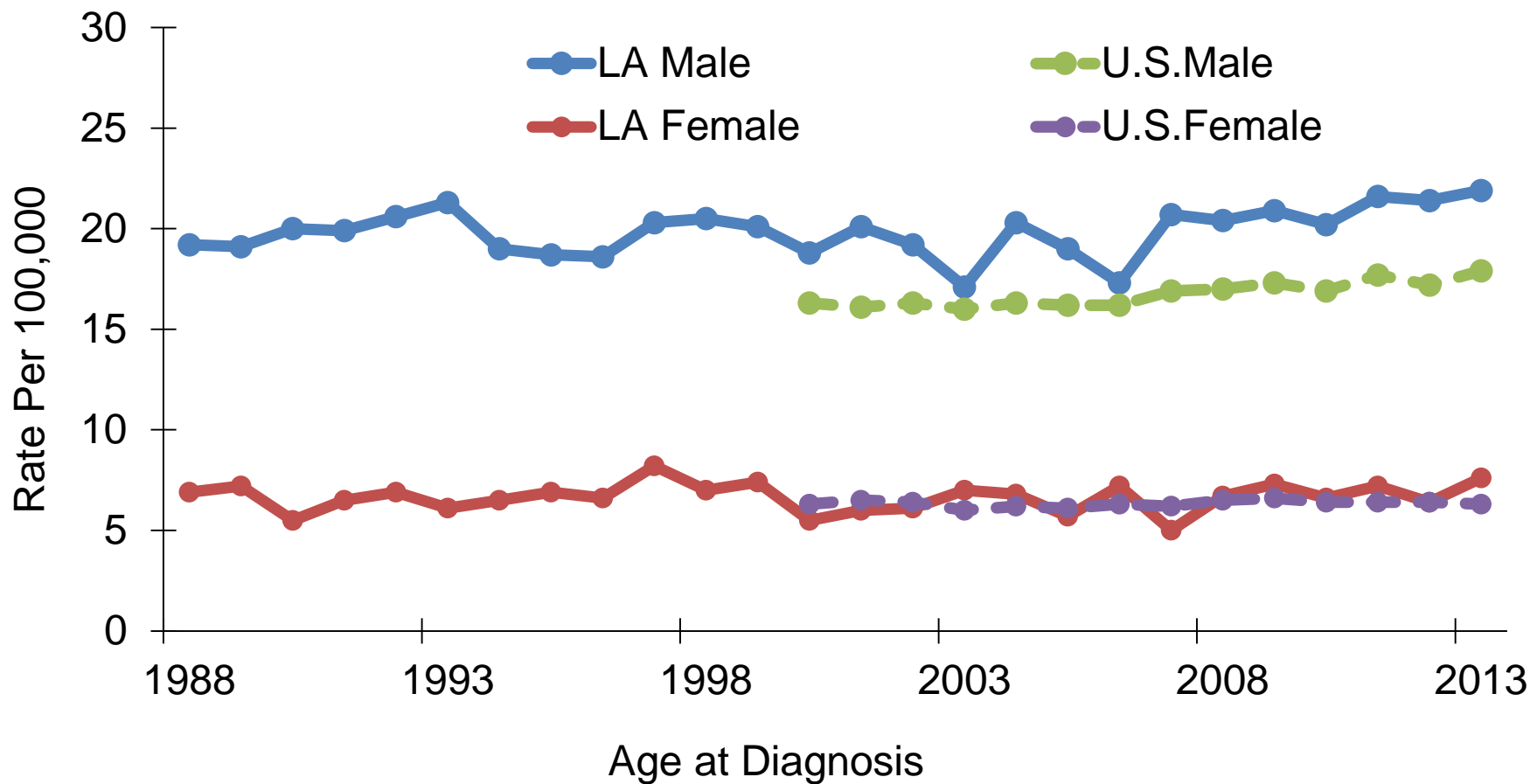


¹ Age-adjusted to the 2000 U.S. standard population.

² Data source for U.S. was the 18 SEER registries.

* Incidence rate of regions/Louisiana is significantly different from that of the U.S.

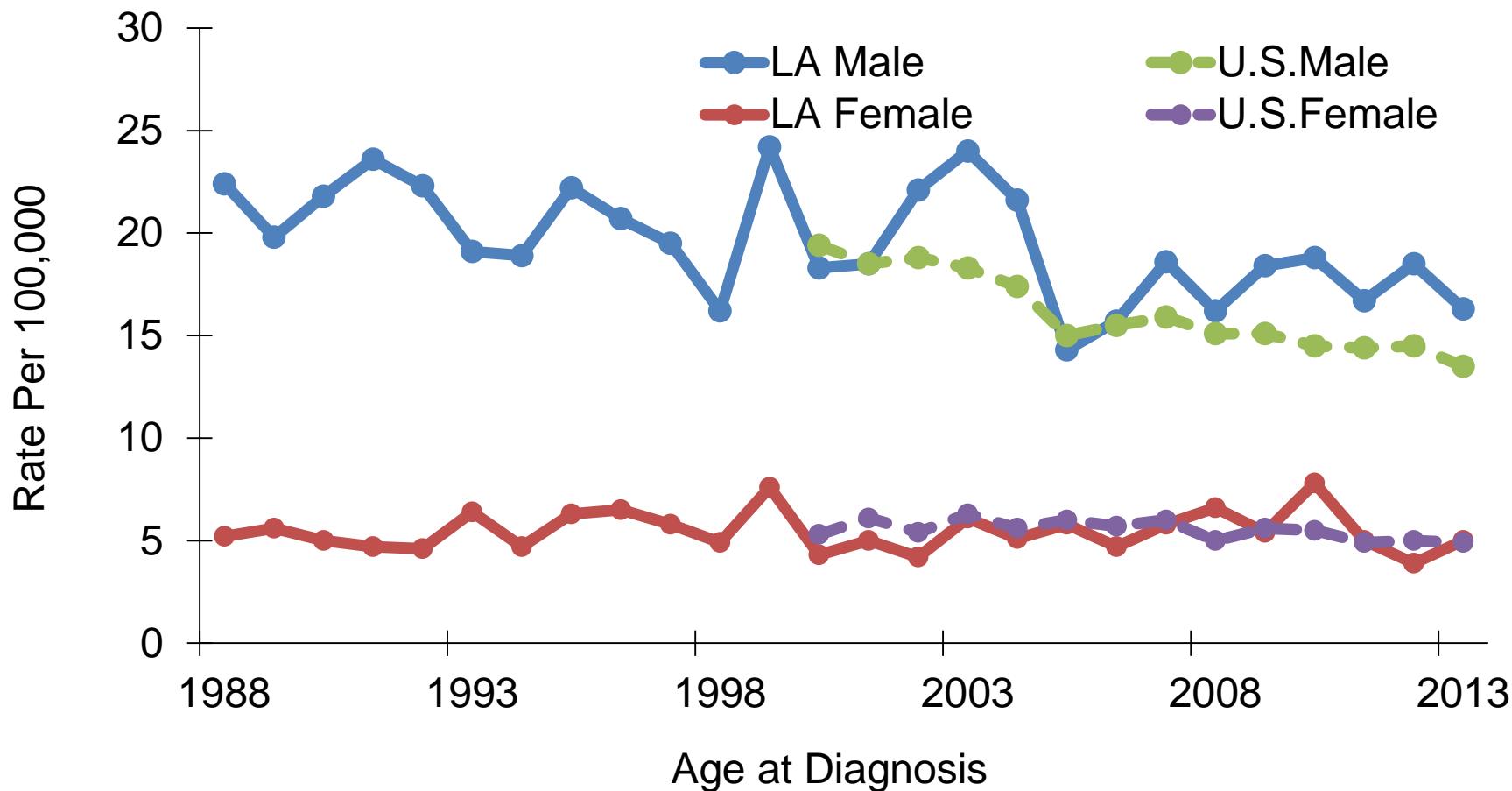
Oral Cavity and Pharynx Cancer: Trends of Incidence Rates^{1,2}, Whites, 1988-2013



¹ Age-adjusted to the 2000 U.S. standard population.

² U.S. data source: 18 SEER registries.

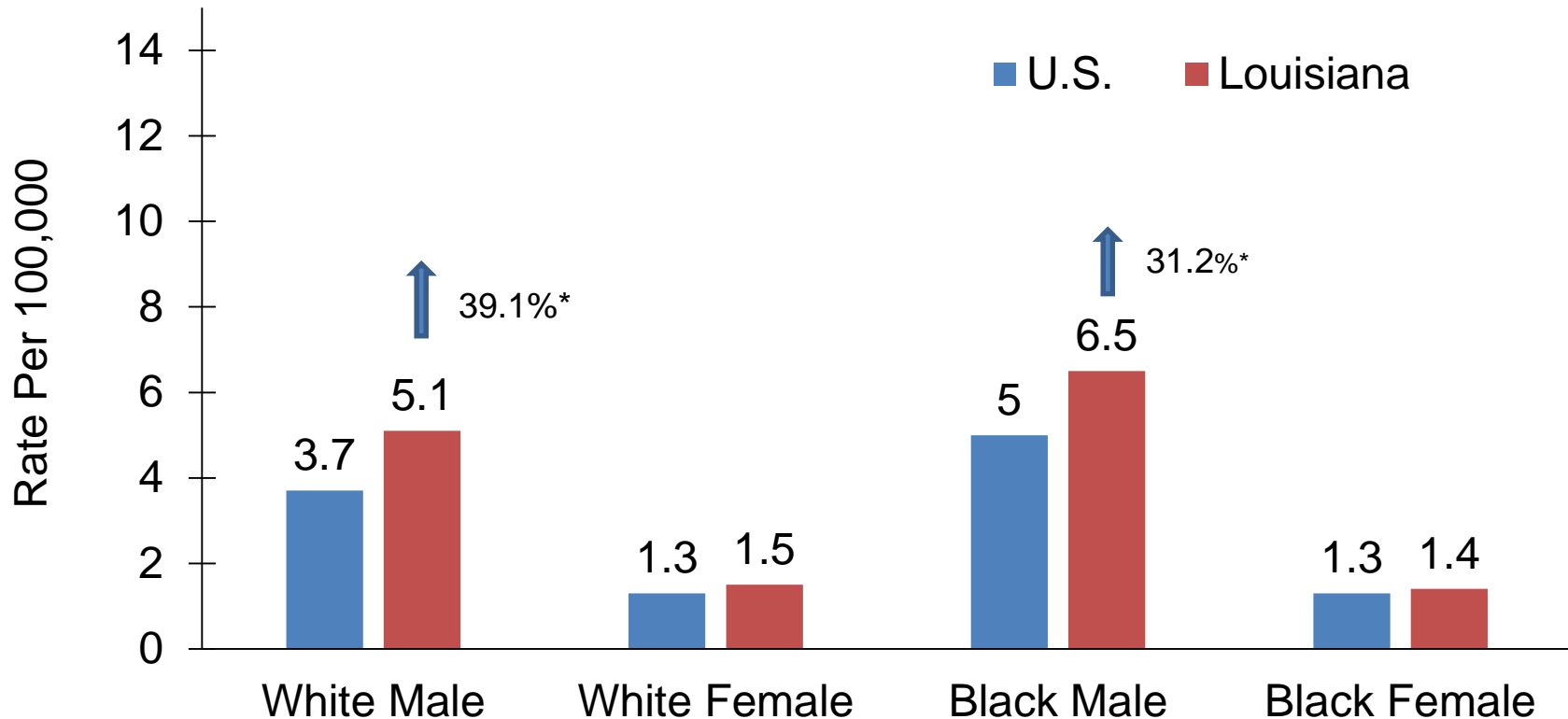
Oral Cavity and Pharynx Cancer: Trends of Incidence Rates^{1,2}, Blacks, 1988-2013



¹ Age-adjusted to the 2000 U.S. standard population.

² U.S. data source: 18 SEER registries.

Oral Cavity and Pharynx Cancer: Mortality Rates¹, Louisiana vs. US², 2009-2013

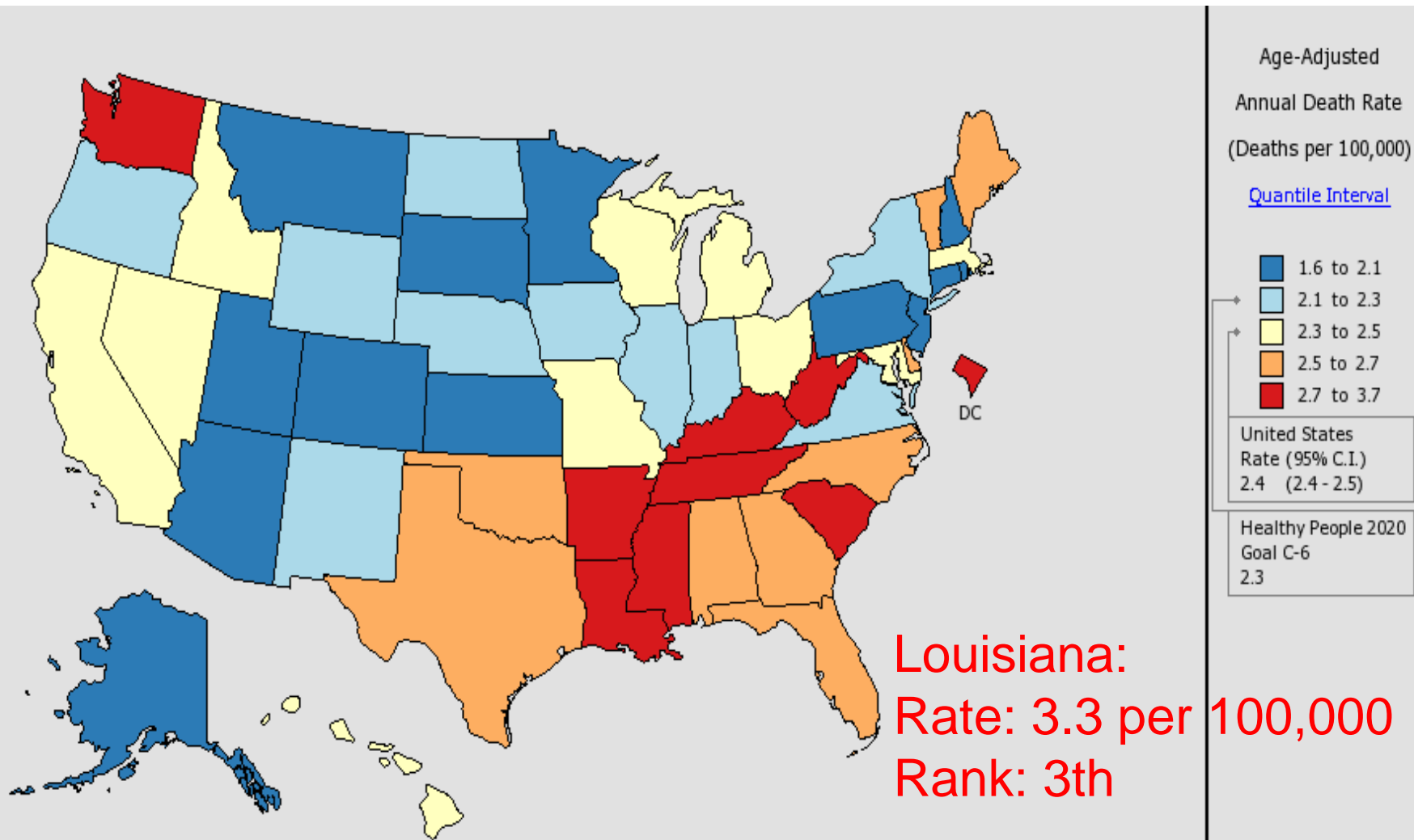


¹ Age-adjusted to the 2000 U.S. standard population.

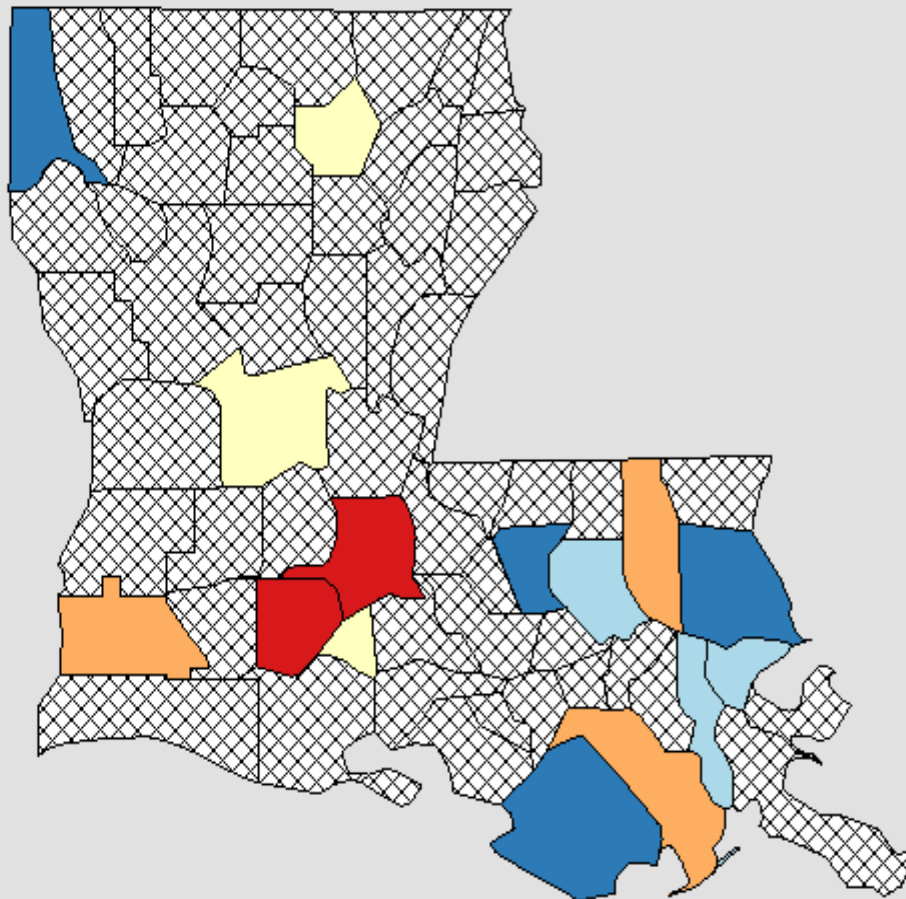
² Data source: National Center of Health Statistics (NCHS).

* The rate of Louisiana is significantly different from that of the U.S.

Mortality Rates of Oral Cavity and Pharynx Cancer in the U.S., All Races, Both Sexes, 2009-2013



Mortality Rates of Oral Cavity and Pharynx Cancer in Louisiana, All Races, Both Sexes, 2009-2013



Age-Adjusted
Annual Death Rate
(Deaths per 100,000)

[Quantile Interval](#)

- 2.5 to 2.8
- 2.8 to 3.1
- 3.1 to 3.9
- 3.9 to 4.7
- 4.7 to 5.6

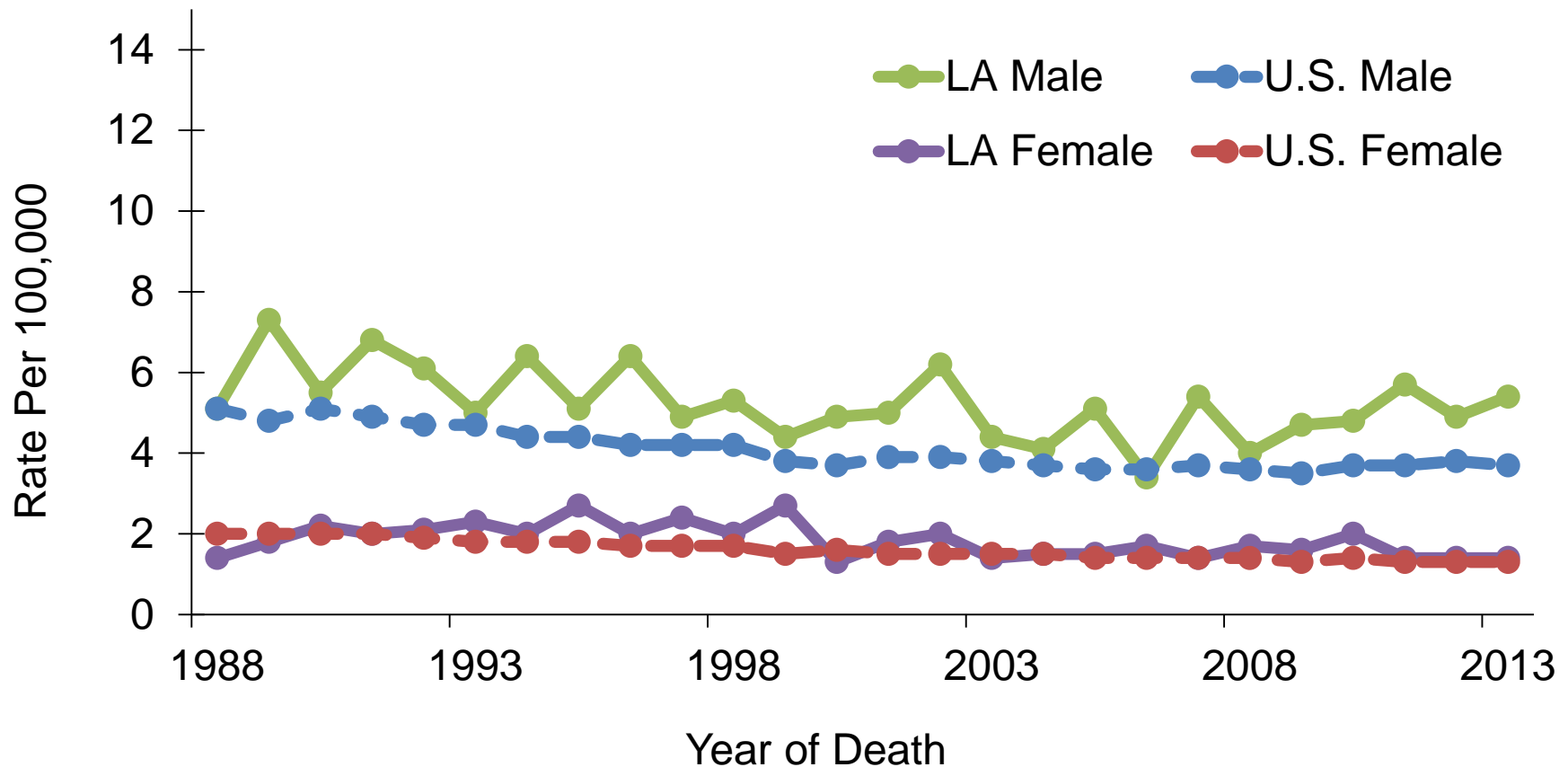
Suppressed*

United States
Rate (95% C.I.)
2.4 (2.4 - 2.5)

Louisiana
Rate (95% C.I.)
3.3 (3.0 - 3.5)

Healthy People 2020
Goal C-6
2.3

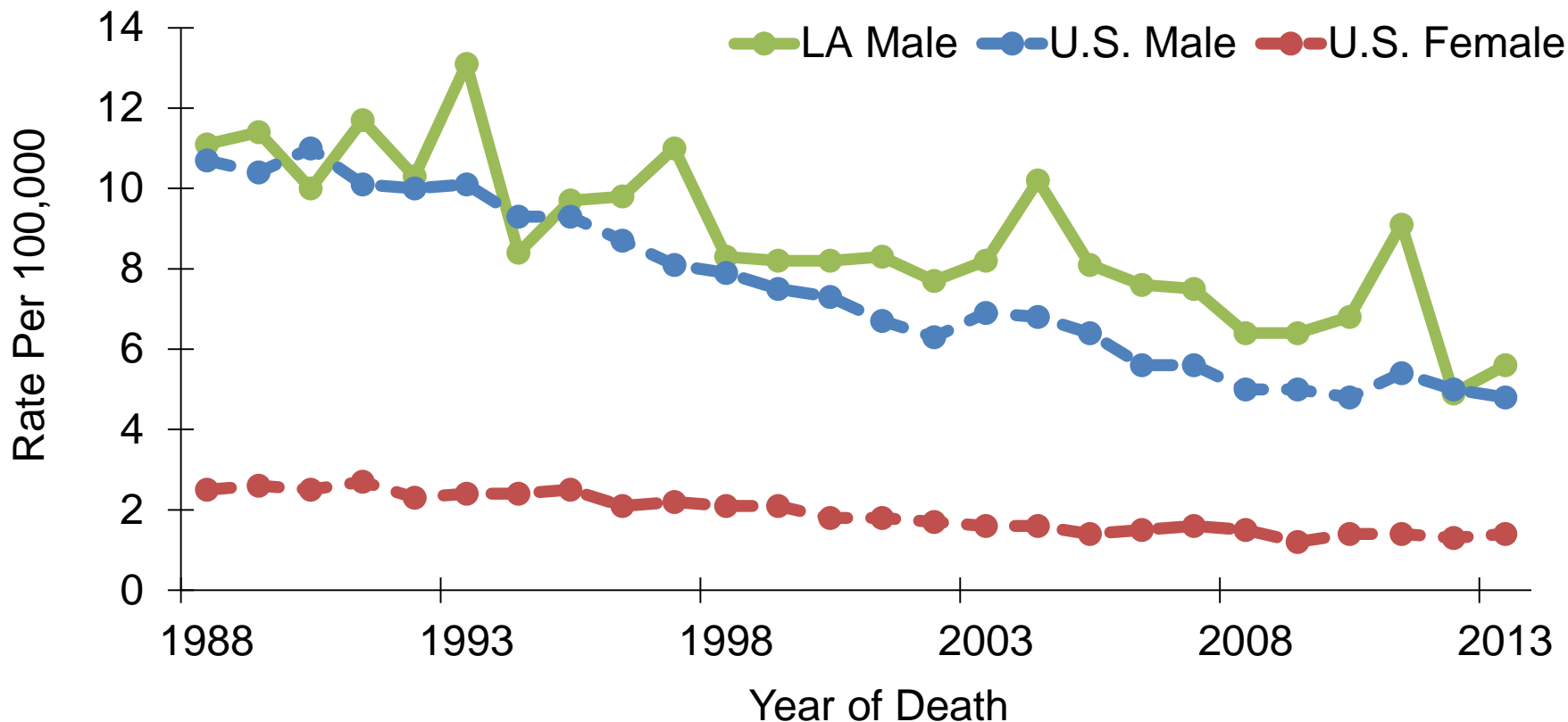
Oral Cavity and Pharynx Cancer : Trends of Mortality Rates^{1,2}, Whites, 1988-2013



¹ Adjusted to the 2000 U.S. standard population.

² Data source: National Center of Health Statistics (NCHS).

Oral Cavity and Pharynx Cancer: Trends of Mortality Rates^{1,2,3}, Blacks, 1988-2013



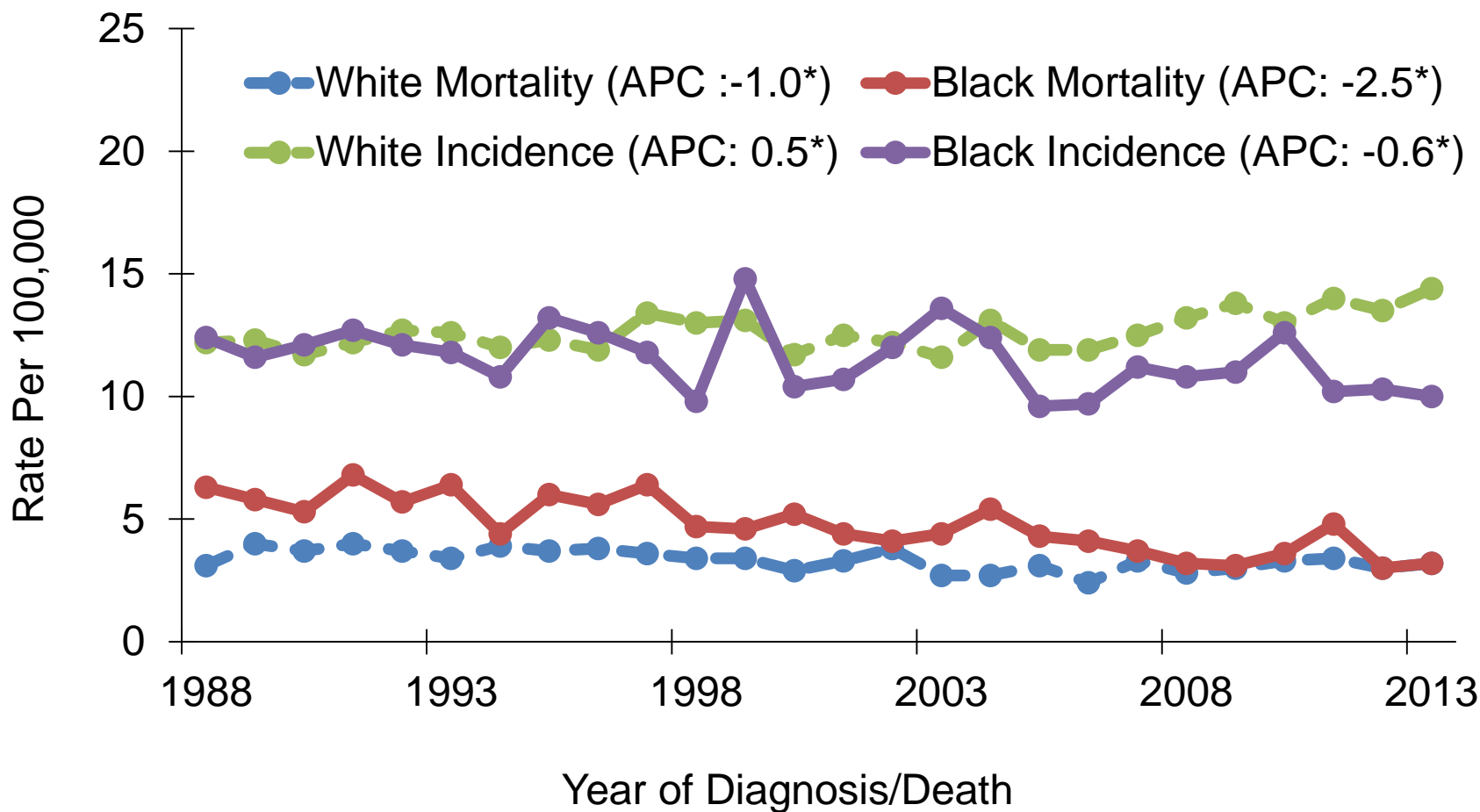
¹ Age-adjusted to the 2000 U.S. standard population.

² Data source: National Center of Health Statistics (NCHS).

³ Louisiana female mortality rate trends could not be calculated due to small case counts.

Oral Cavity and Pharynx Cancer: Louisiana

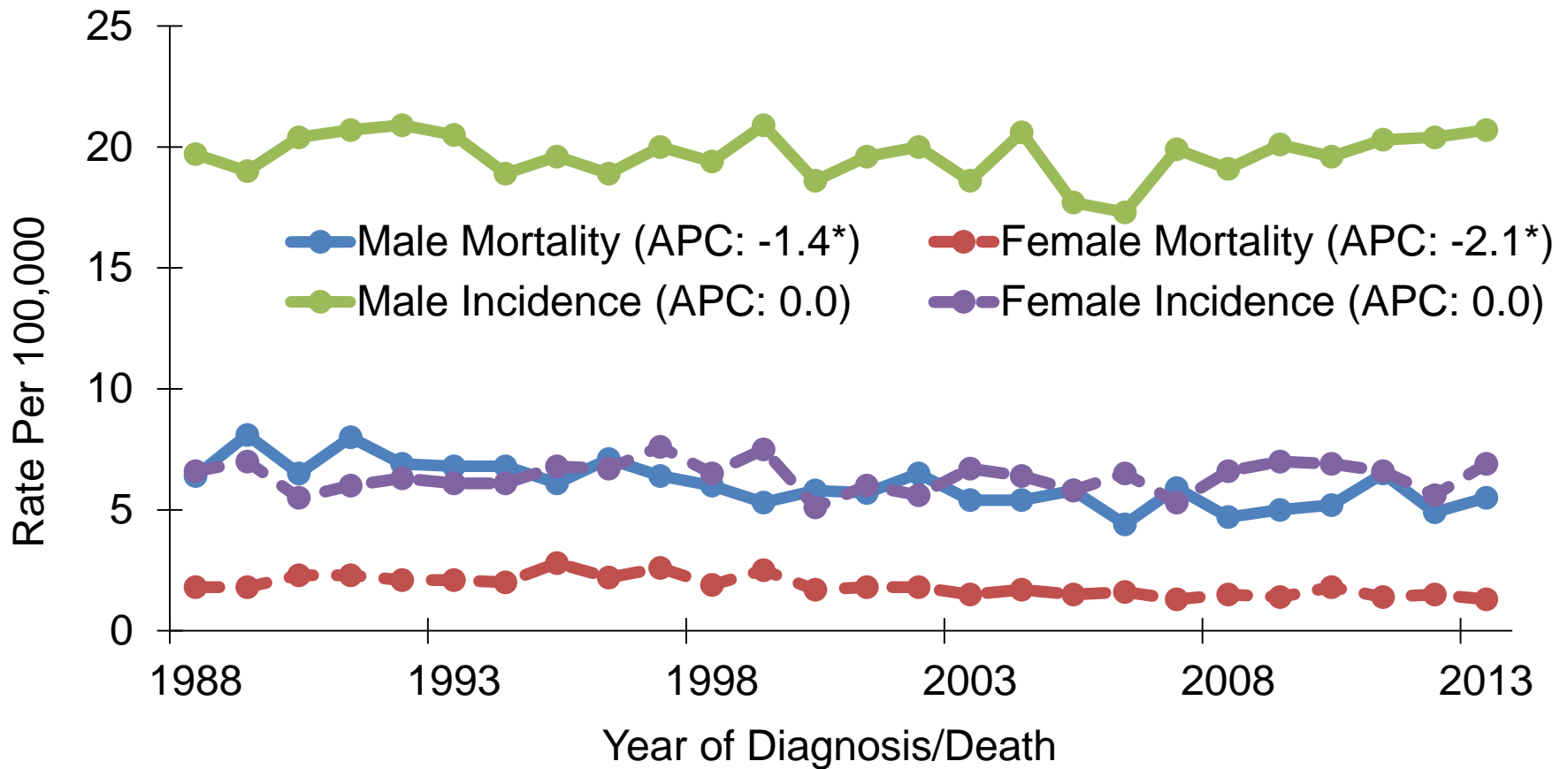
Trends of Incidence and Mortality Rates by Race, 1988-2013



*APCs were calculated using weighted least squares method

Oral Cavity and Pharynx Cancer: Louisiana

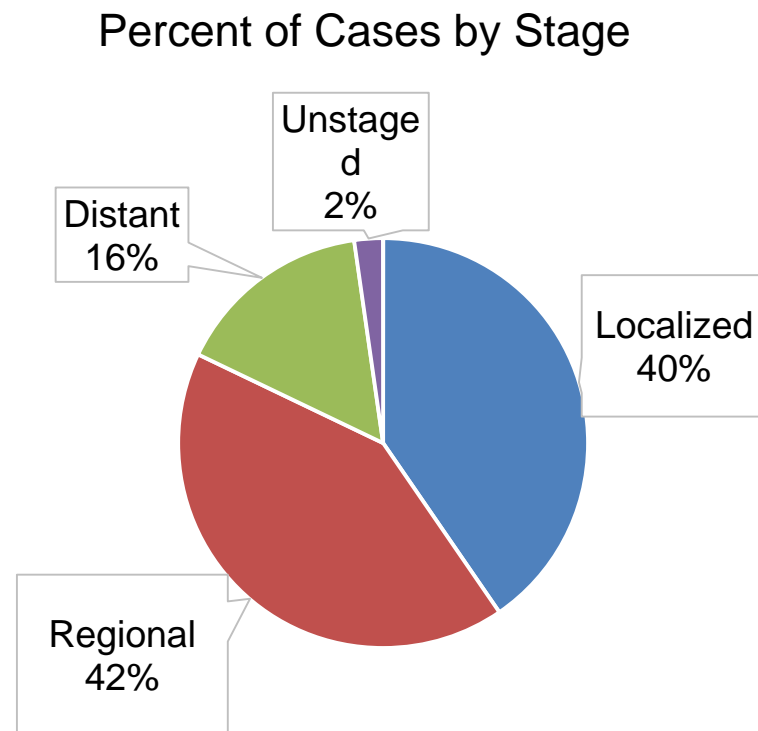
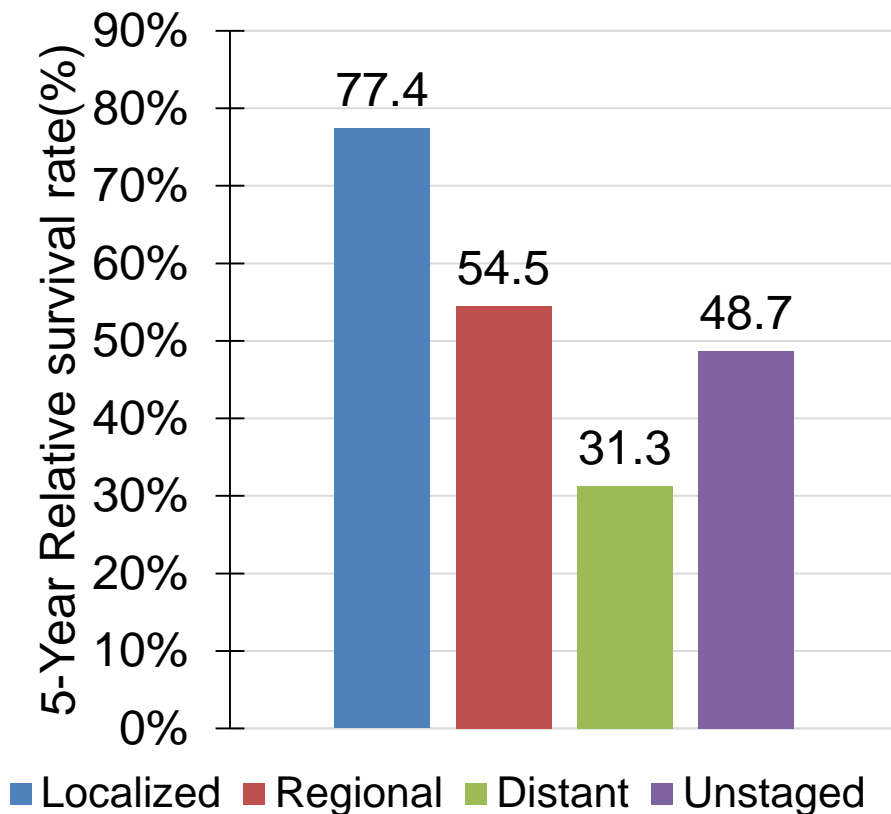
Trends of Incidence and Mortality Rates by Gender, 1988-2013



APCs were calculated using weighted least squares method

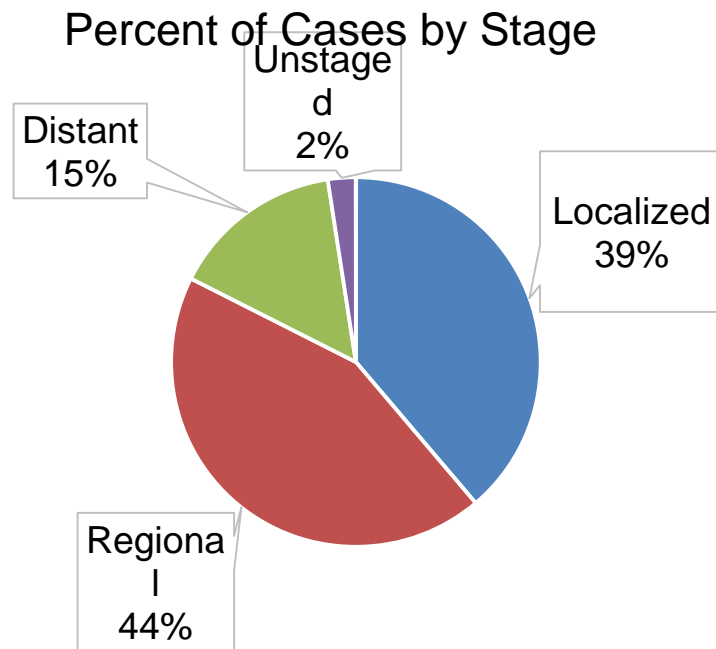
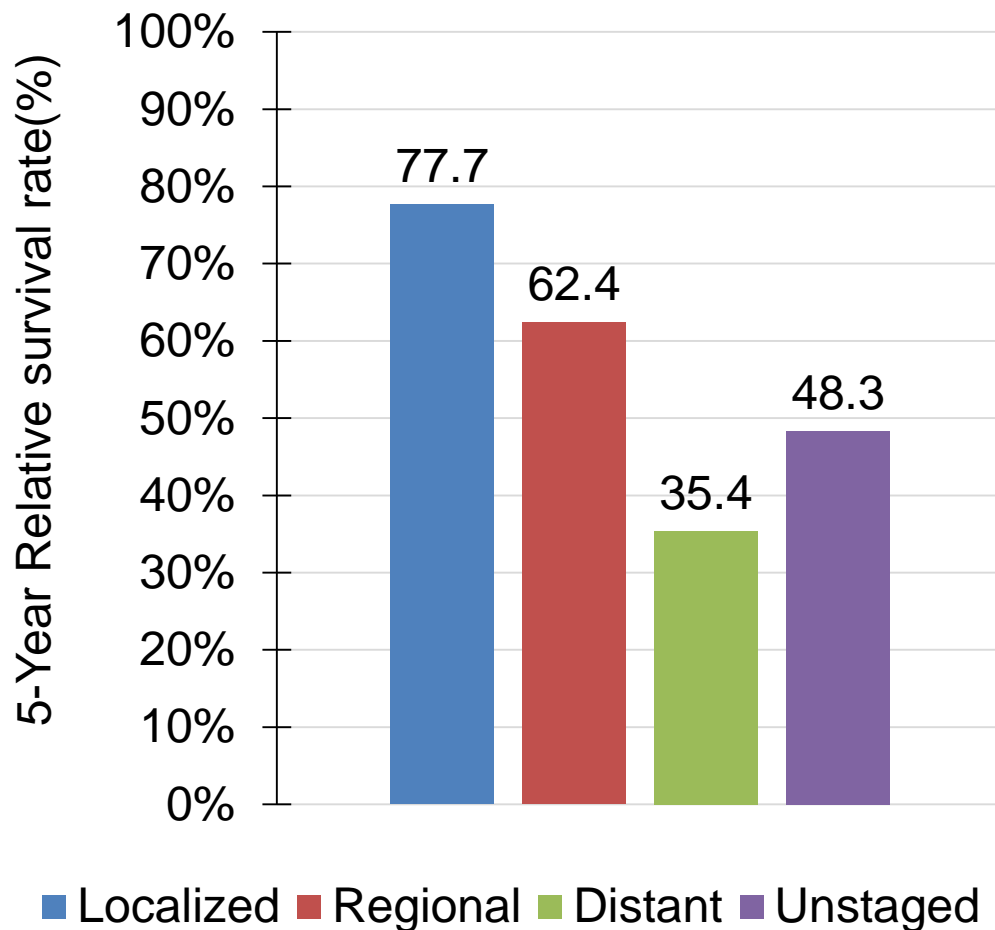
Oral Cavity and Pharynx Cancer: Louisiana

5-Year Relative Survival by Stage¹, All Races, Both Sexes, 2006-2012



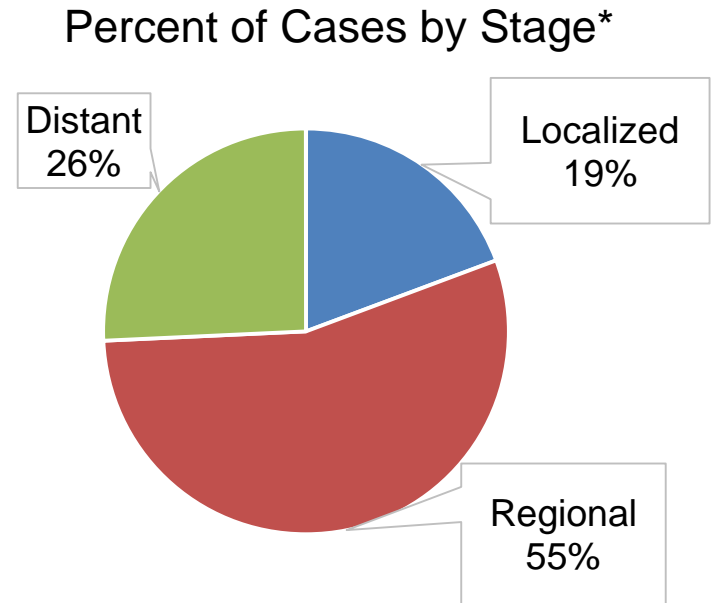
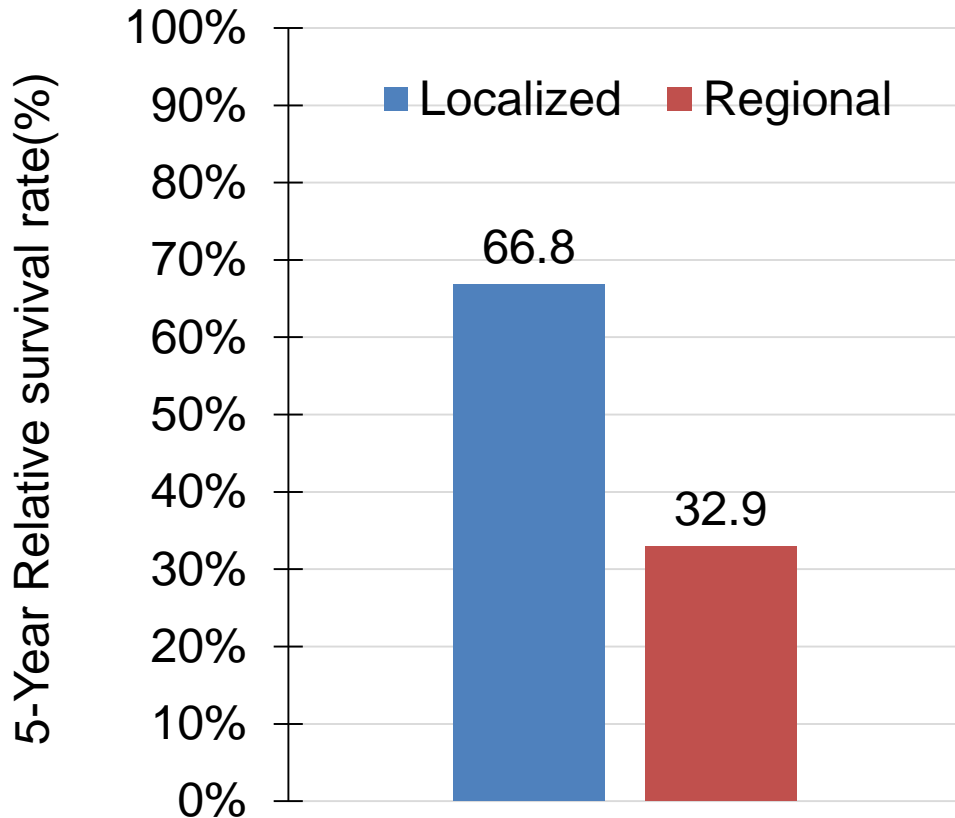
¹ The stage distribution is based on Derived Summary Stage 2000.

Oral Cavity and Pharynx Cancer: Louisiana 5-Year Relative Survival by Stage¹, White Males, 2006-2012



¹ The stage distribution is based on Derived Summary Stage 2000.

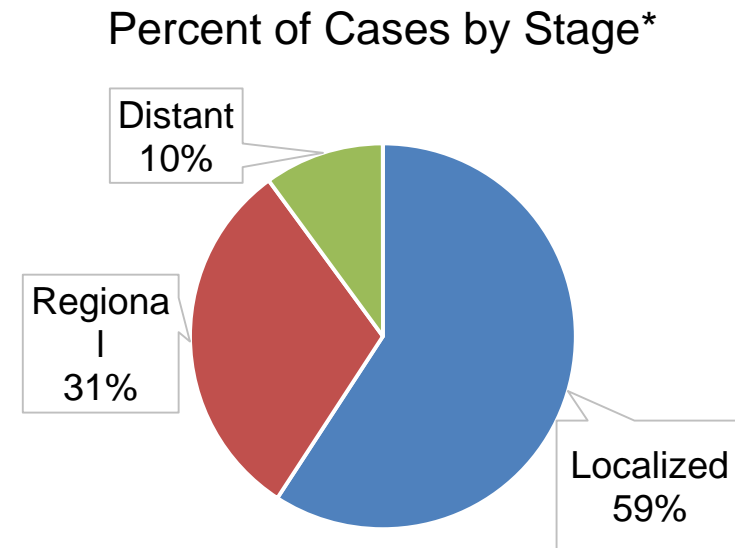
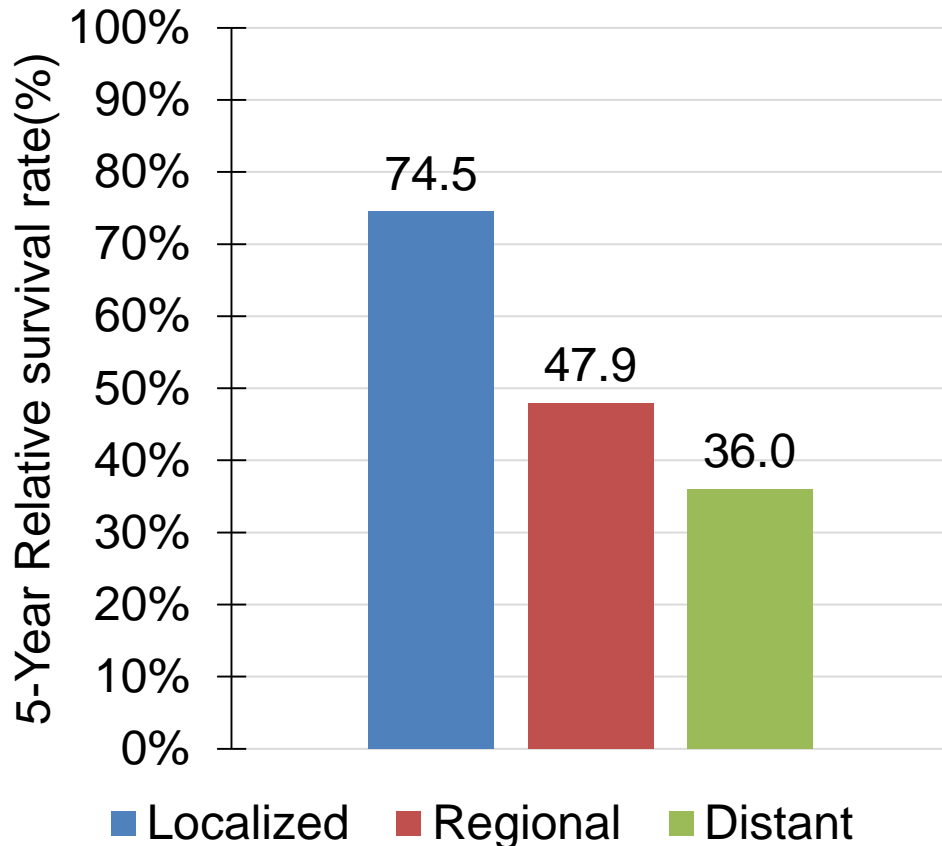
Oral Cavity and Pharynx Cancer: Louisiana 5-Year Relative Survival by Stage¹, Black Males, 2006-2012



¹ The stage distribution is based on Derived Summary Stage 2000.

* The survival rate of those diagnosed at a distant stage could not be calculated due to small case counts.

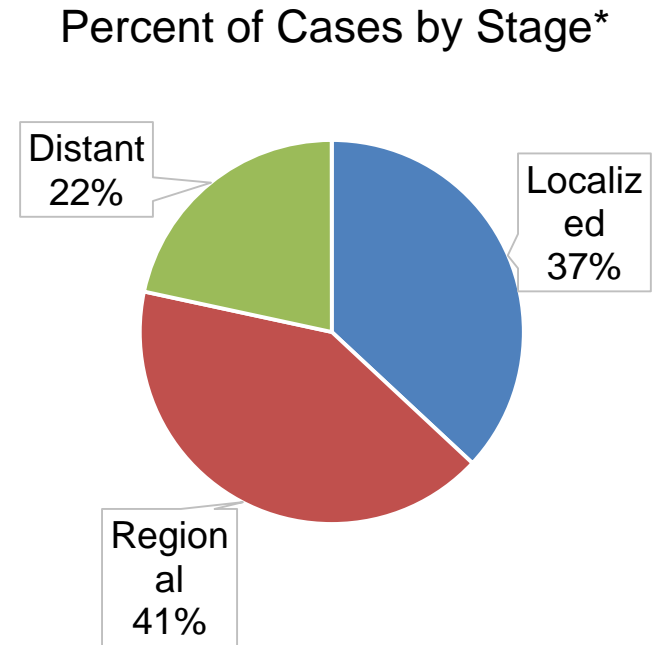
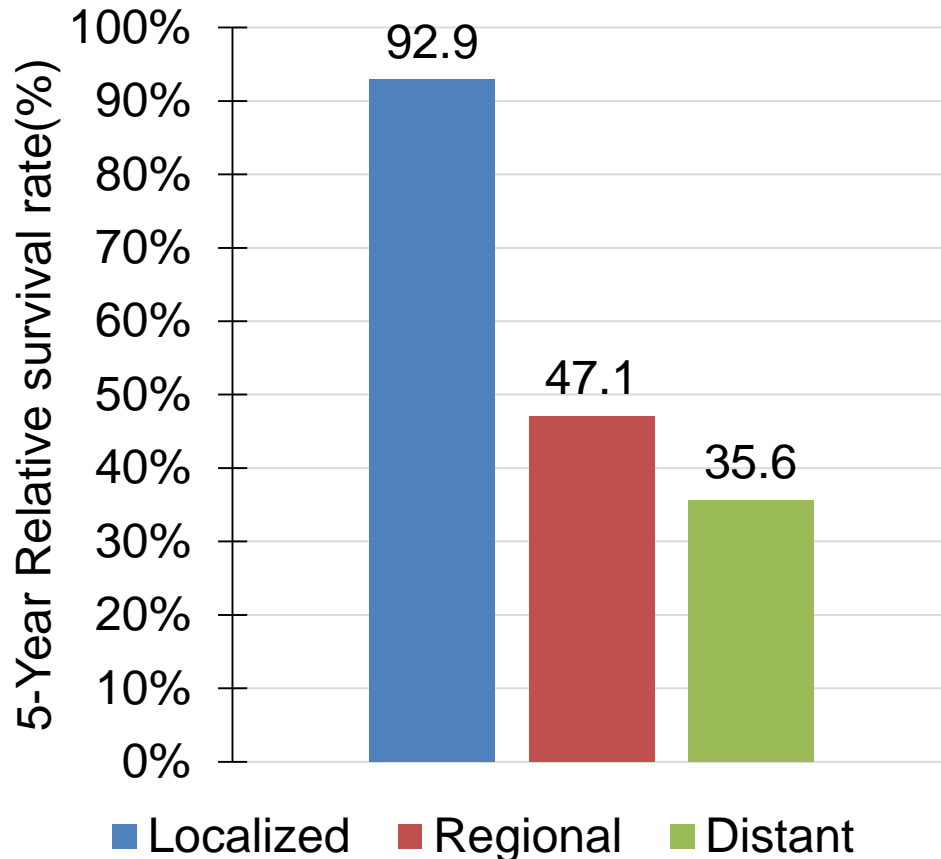
Oral Cavity and Pharynx Cancer: Louisiana 5-Year Relative Survival by Stage¹, White Females, 2006-2012



¹ The stage distribution is based on Derived Summary Stage 2000.

* The survival rate of unstaged cases could not be calculated due to small case counts.

Oral Cavity and Pharynx Cancer: Louisiana 5-Year Relative Survival by Stage¹, Black Females, 2006-2012



¹ The stage distribution is based on Derived Summary Stage 2000.

* The survival rate of unstaged cases could not be calculated due to small case counts.

Data Sources

Surveillance, Epidemiology, and End Results (SEER) Program (www.seer.cancer.gov) SEER*Stat Databases, National Cancer Institute, DCCPS, Surveillance Research Program, Surveillance Systems Branch, released April 2016, based on the November 2015 submission.

For Incidence:

- Incidence - SEER 18 Regs Research Data + Hurricane Katrina Impacted Louisiana Cases, Nov 2015 Sub (2000-2013) <Katrina/Rita Population Adjustment>
- SEER*DMS - LTR 1988-2013, June 7, 2016

For Mortality:

- mortality – all COD, aggregated with States, Total U.S. (1969-2013) <Katrina/Rita Population Adjustment>

For Survival:

- Incidence - SEER 18 Regs Research Data + Hurricane Katrina Impacted Louisiana Cases, Nov 2015 Sub (1973-2013 varying)

Acknowledgements

- **Hospital cancer registries** (<http://louisianatumorregistry.lsuhs.edu/>)
- **Louisiana Cancer Registrars' Association** (<http://www.lcra-usa.org/>)
- **Physicians and staff members in:**
 - Medical records offices
 - Pathology laboratories
 - Physician offices and clinics
 - Hospice programs and nursing homes
- **Regional and central offices of the Louisiana Tumor Registry**
(<http://louisianatumorregistry.lsuhs.edu/regionalregistries.html>)
- **School of Public Health, LSU Health Sciences Center–New Orleans**
- **Louisiana Cancer and Lung Trust Fund Board**
- **Coroners' offices**

Sources of LTR Funding

- National Cancer Institute, SEER Program
- National Program of Cancer Registries, CDC
- Louisiana Health Care Services Division

Editors

Shuang Yang, MPH

Meichin Hsieh, PhD, MSPH, CTR

Lauren Maniscalco, MPH

Xiaocheng Wu, MD, MPH, CTR

Contributors

Xiangrong Li, MD, MSPH

Brent Mumphrey, BS

Tina Lefante, MPH

Lisa Pareti, BS, RHIT, CTR

Yong Yi, PhD, MS

Questions?

Contact:

LTR-info@lsuhsc.edu

or

504/568-5757