

Louisiana Cancer Facts & Figures, Non-Hodgkin Lymphoma, 2016

Louisiana Tumor Registry

September, 2016

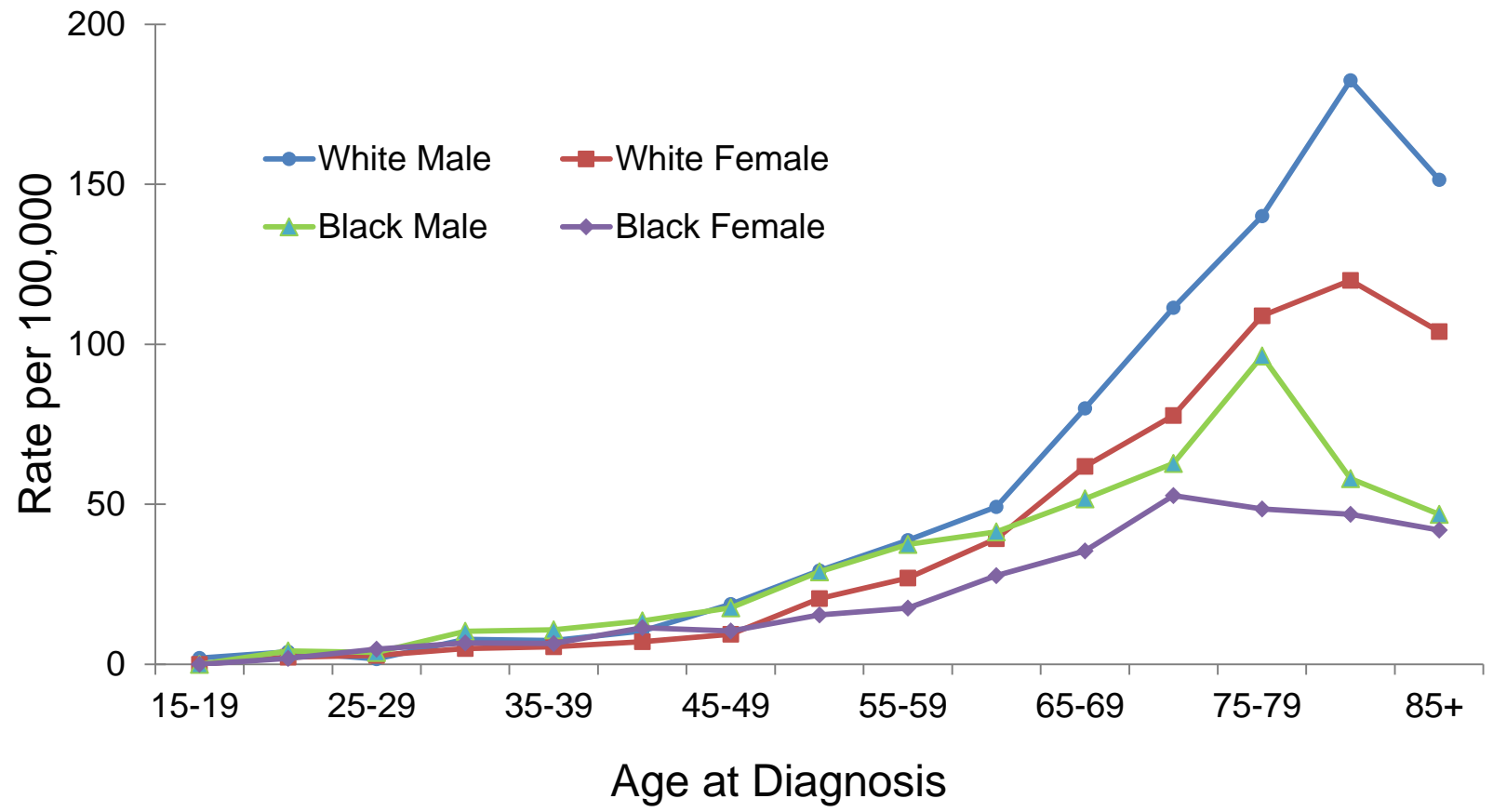
Non-Hodgkin Lymphoma

- Non-Hodgkin lymphoma was the 6th most common cancer in Louisiana, and the 8th most common cancer in the U.S.¹ from 2009 to 2013.
- Between 2009 and 2013, Non-Hodgkin lymphoma was the 8th leading cause of cancer deaths in both Louisiana and the U.S.¹
- About 1,090 new Non-Hodgkin Lymphoma cases are expected to be diagnosed and about 280 persons are expected to die of Non-Hodgkin Lymphoma in Louisiana in 2016².

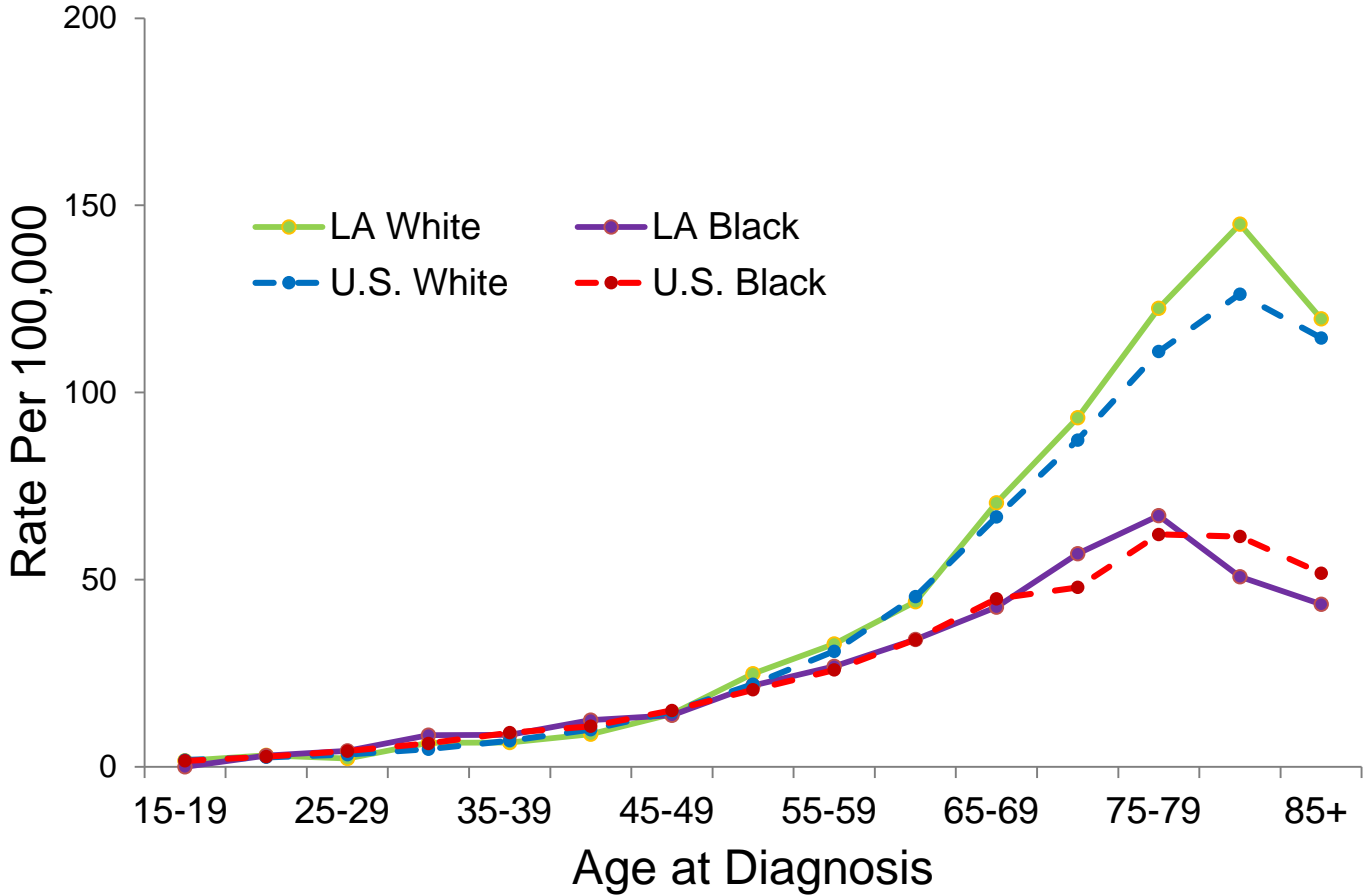
1. Data source: NCI state cancer profile.

2. Data source: American Cancer Society, Cancer Facts & Figures 2016

Non-Hodgkin Lymphoma: Age-Specific Incidence Rates Louisiana, 2009-2013

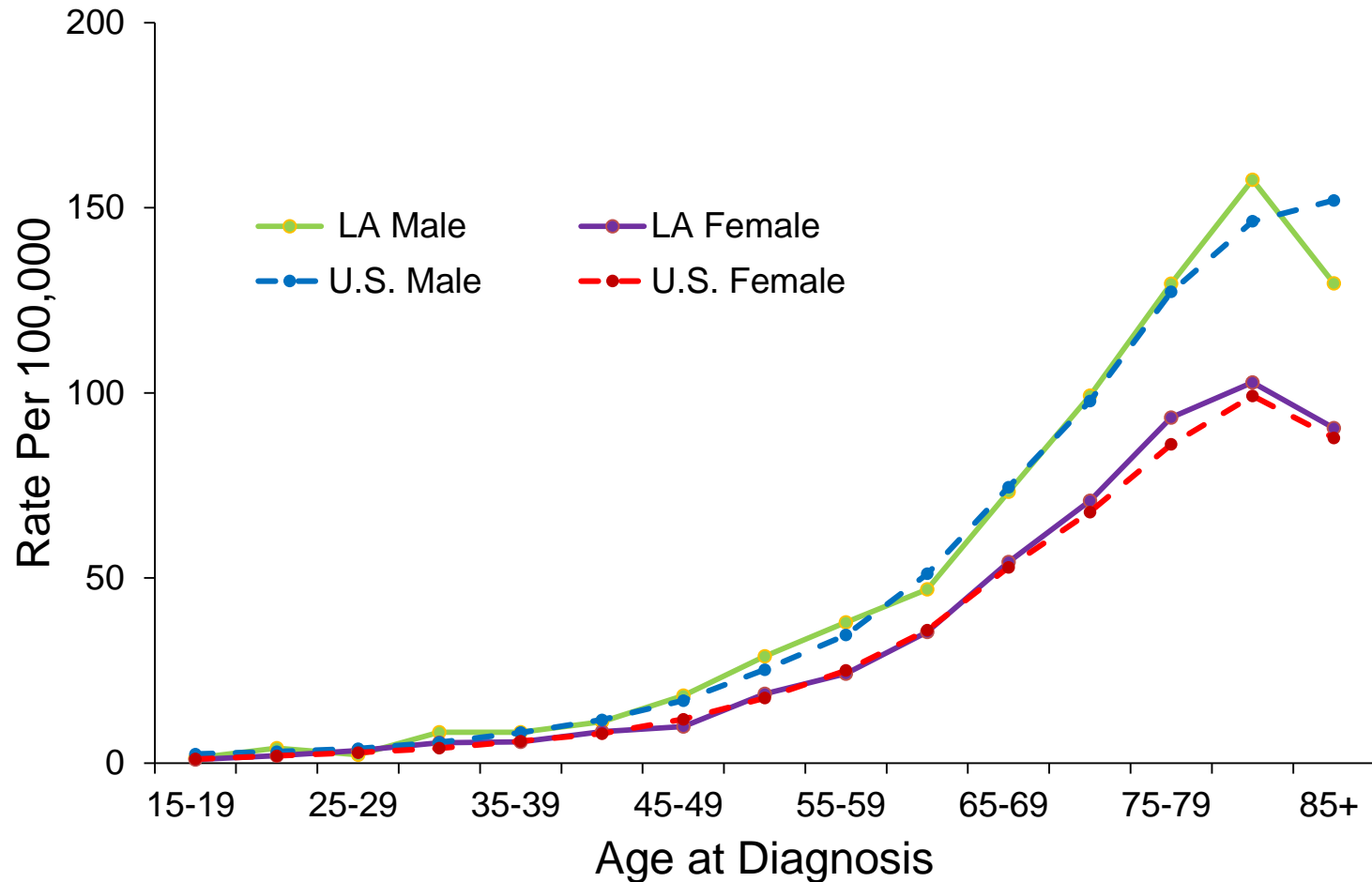


Non-Hodgkin Lymphoma: Age-Specific Incidence Rates by Race, Louisiana and the U.S., 2009-2013



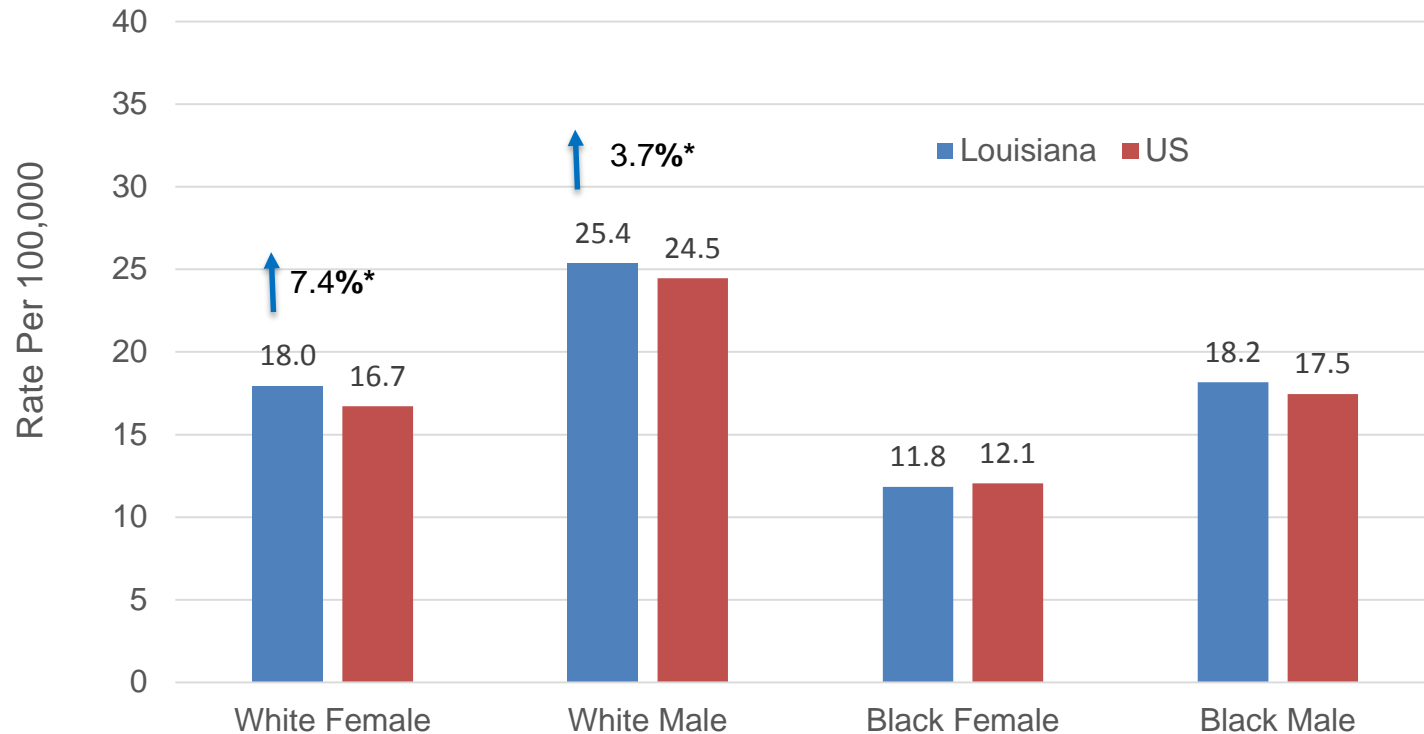
U.S. data source: 18 SEER registries.

Non-Hodgkin Lymphoma: Age-Specific Incidence Rates by Gender, Louisiana and the U.S., 2009-2013



U.S. data source: 18 SEER registries.

Non-Hodgkin Lymphoma: Incidence Rates¹, Louisiana vs. U.S.,² 2009-2013

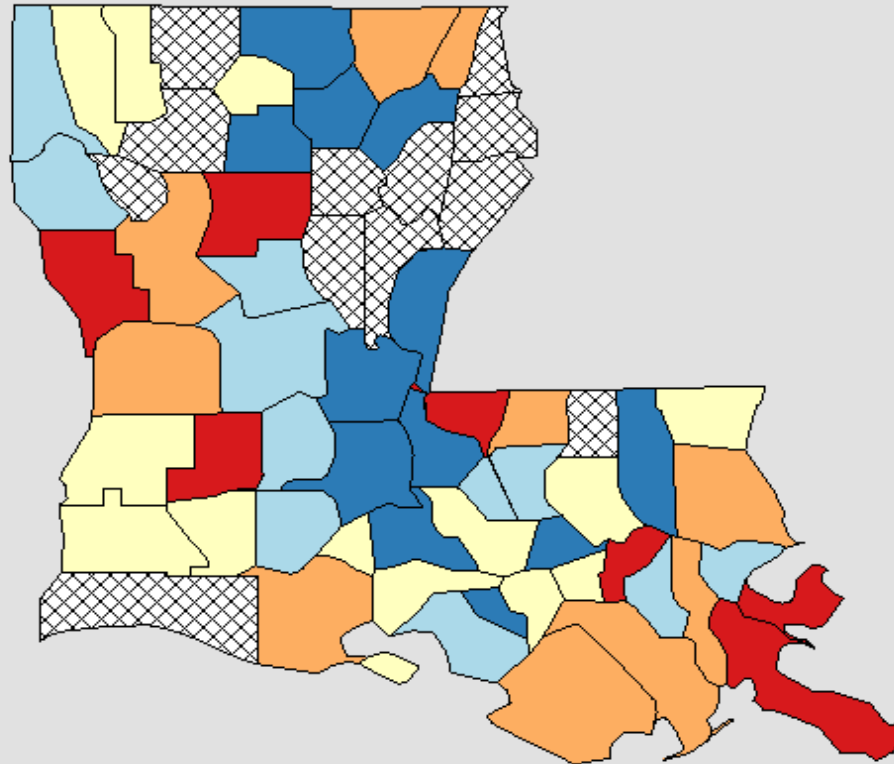


¹ Age-adjusted to the 2000 U.S. standard population.

² Incidence data source: 18 SEER registries.

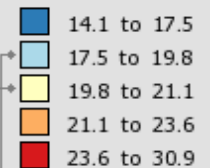
* Incidence rate of Louisiana is significantly different from that of the U.S.

Incidence Rates[†] for Louisiana
Non-Hodgkin Lymphoma, 2009 - 2013
All Races (includes Hispanic), Both Sexes, All Ages



Age-Adjusted
Annual Incidence Rate
(Cases per 100,000)

[Quantile Interval](#)



Suppressed * / **

US (SEER + NPCR)
Rate (95% C.I.)
19.1 (19.0 - 19.1)

Louisiana
Rate (95% C.I.)
19.9 (19.3 - 20.4)

Notes:

Created by statecancerprofiles.cancer.gov on 09/22/2016 4:49 pm.

[State Cancer Registries](#) may provide more current or more local data.

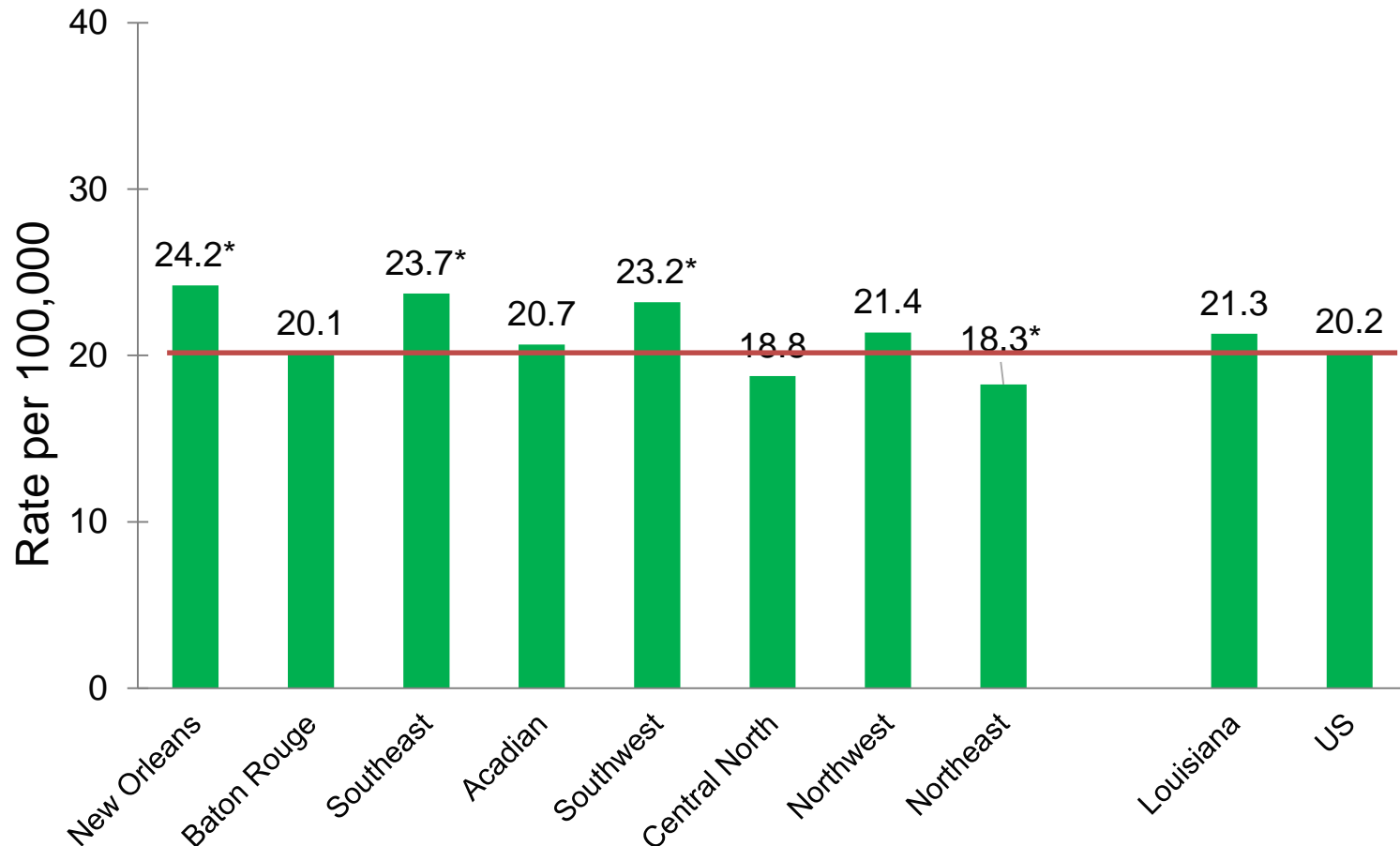
Data presented on the State Cancer Profiles Web Site may differ from statistics reported by the State Cancer Registries ([for more information](#)).

[†] Incidence rates (cases per 100,000 population per year) are age-adjusted to the [2000 US standard population](#) (19 age groups: <1, 1-4, 5-9, ... , 80-84, 85+). Rates are for invasive cancer only (except for bladder which is invasive and in situ) or unless otherwise specified. Rates calculated using SEER*Stat. Population counts for denominators are based on Census populations as modified by NCI. The [1969-2014 US Population Data](#) File is used for SEER and NPCR incidence rates.

* Data have been [suppressed](#) to ensure confidentiality and stability of rate estimates. Data is currently being suppressed if there are fewer than 16 counts for the time period.

** Data have been [suppressed](#) for states with a population below 50,000 per sex combination for American Indian/Alaska Native or Asian/Pacific Islanders because of concerns regarding the relatively small size of these populations in some states.

Non-Hodgkin Lymphoma Incidence Rates^{1,2} by Region Louisiana, Whites, 2009-2013

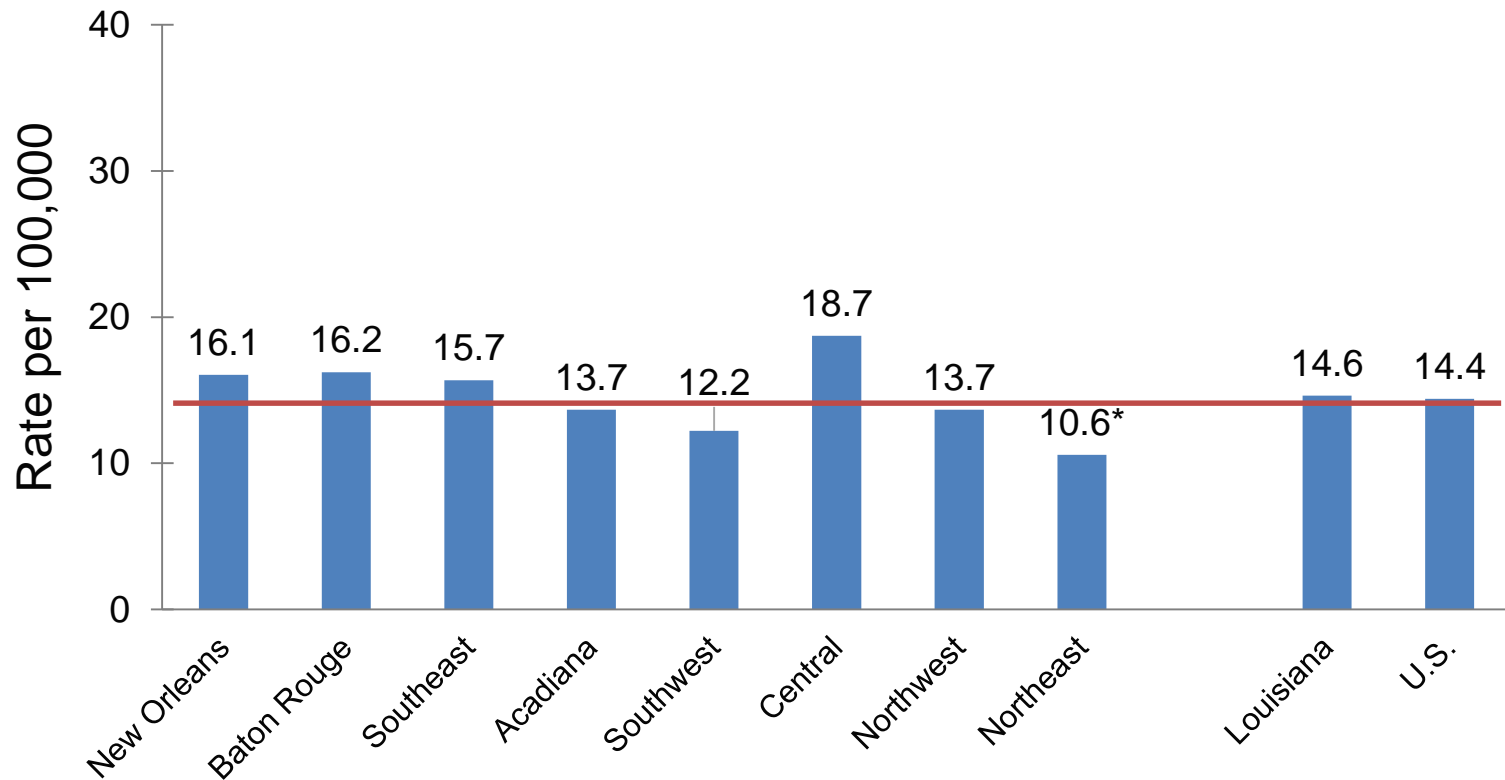


¹ Age-adjusted to the 2000 U.S. standard population.

² Data source for U.S. was the 18 SEER registries.

* Incidence rate of regions/Louisiana is significantly different from that of U.S.

Non-Hodgkin Lymphoma Incidence Rates^{1,2} by Region Louisiana, Blacks, 2009-2013

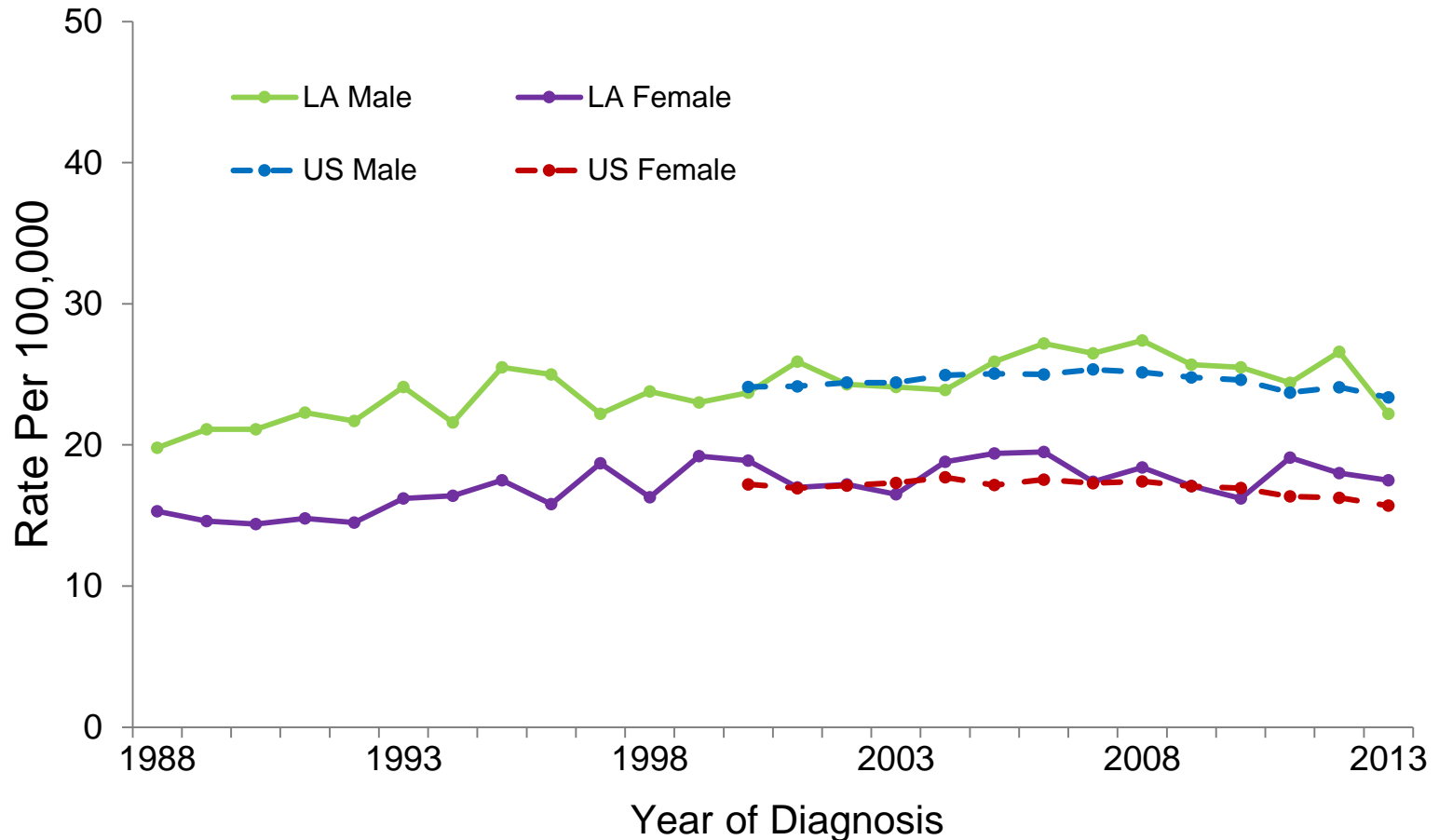


¹ Age-adjusted to the 2000 U.S. standard population.

² Data source for U.S. was the 18 SEER registries.

* Incidence rate of regions/Louisiana is significantly different from that of U.S.

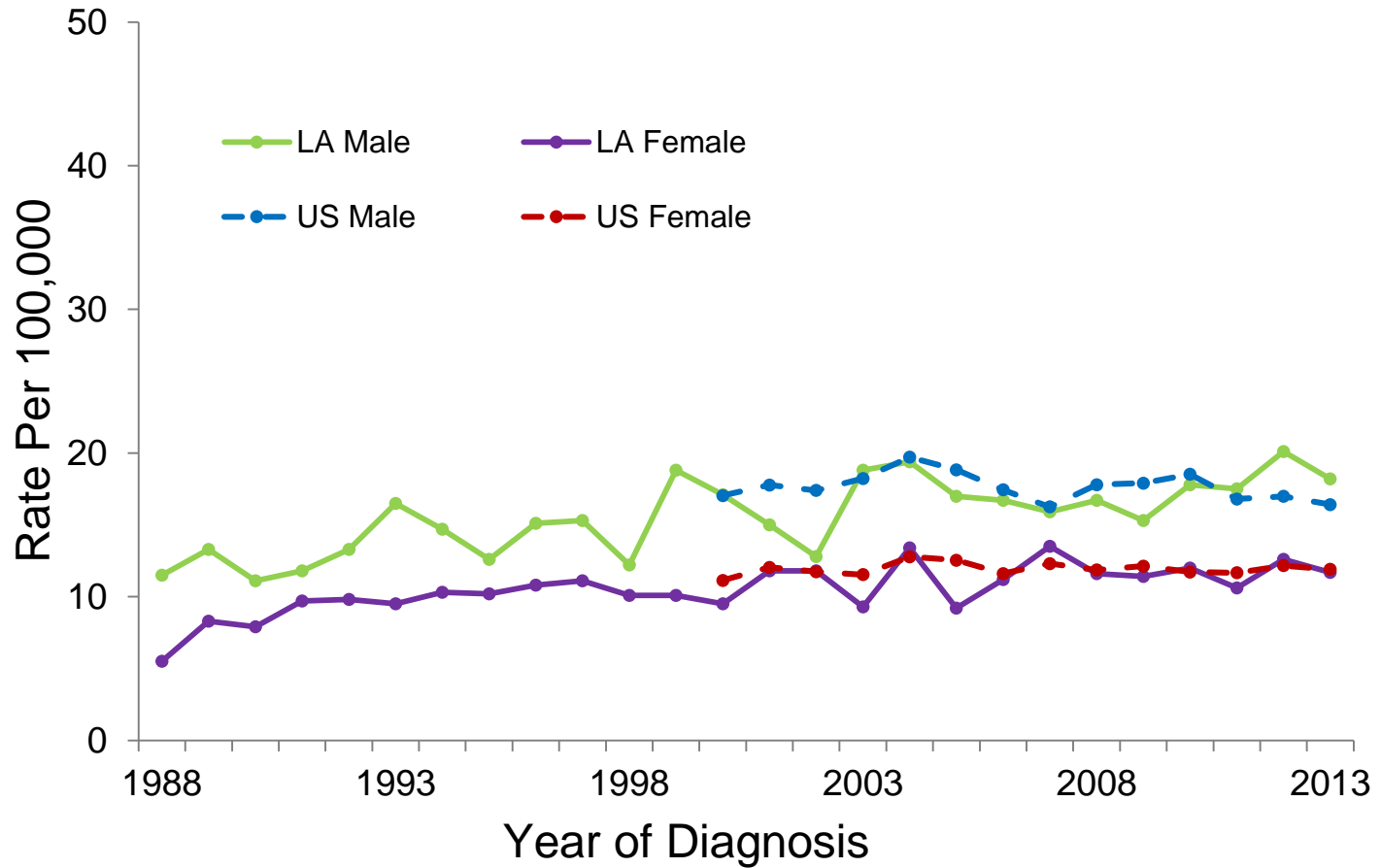
Non-Hodgkin Lymphoma: Trends of Incidence Rates^{1,2} Whites, Louisiana and the U.S., 1988-2013



¹ Age-adjusted to the 2000 U.S. standard population.

² U.S. incidence data source: 18 SEER registries.

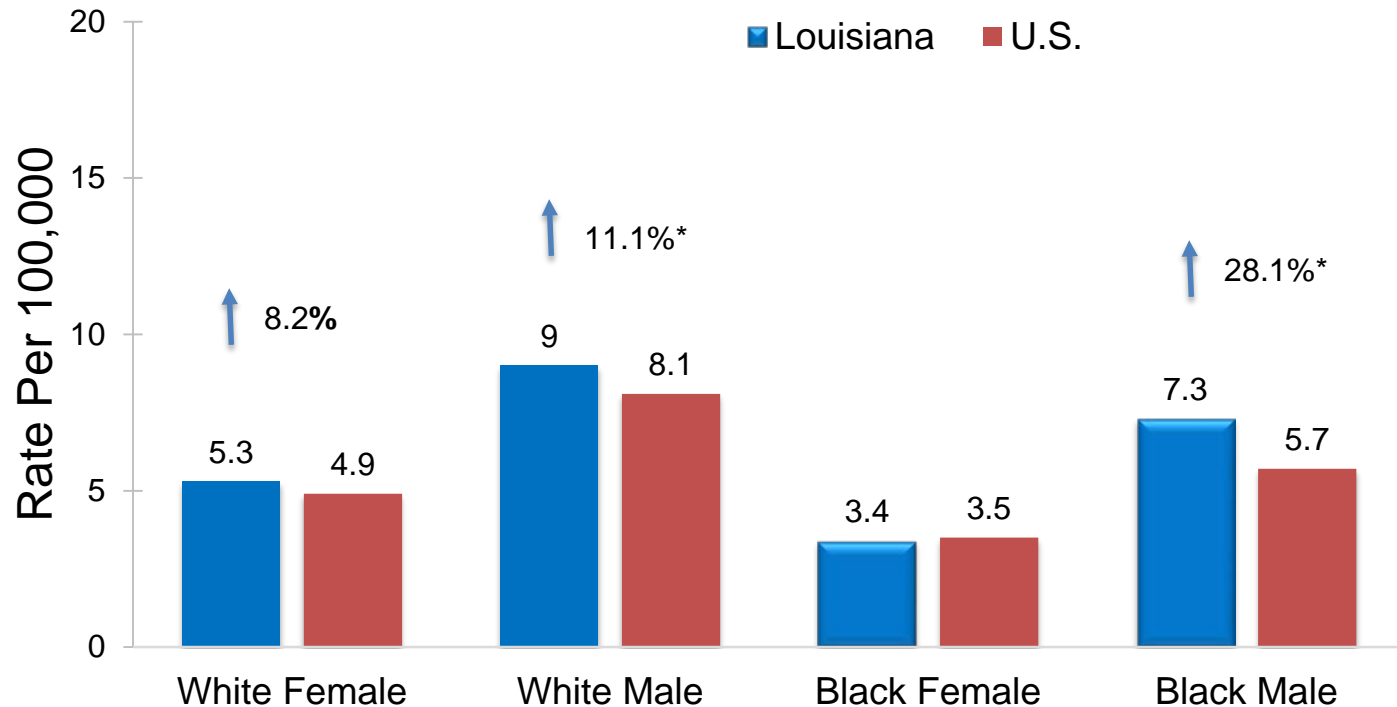
Non-Hodgkin Lymphoma: Trends of Incidence Rates^{1,2} Blacks, Louisiana and the U.S., 1988-2013



¹ Age-adjusted to the 2000 U.S. standard population.

² U.S. data source: 18 SEER registries.

Non-Hodgkin Lymphoma Mortality Rates¹ Louisiana vs. U.S.², 2009-2013



¹ Age-adjusted to the 2000 U.S. standard population.

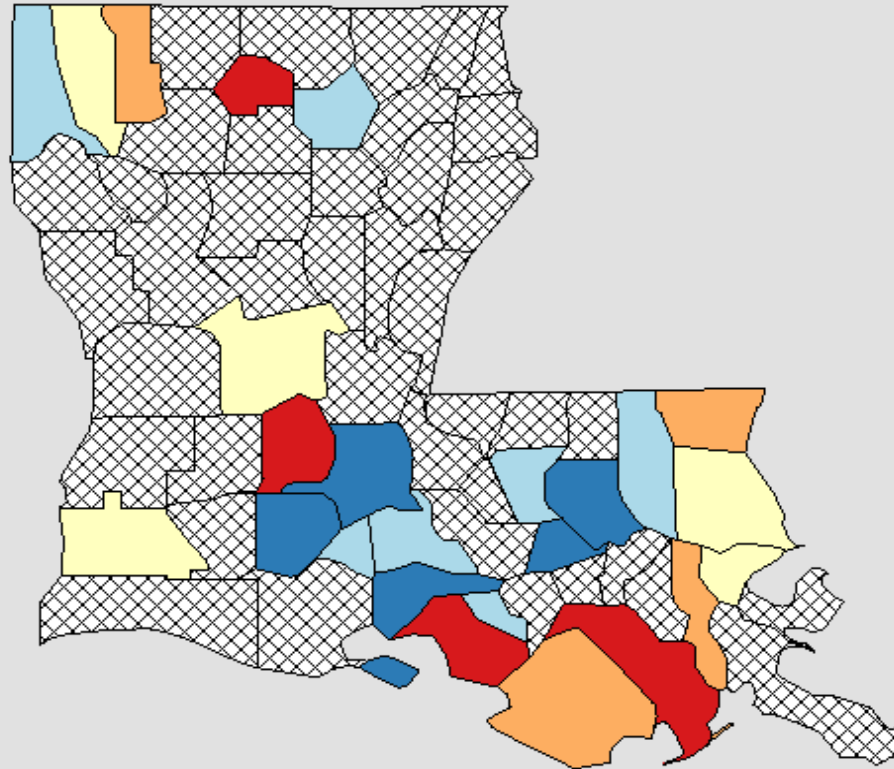
² Mortality Data source: National Center of Health Statistics (NCHS).

* The rate of Louisiana is significantly different from that of the U.S.

Death Rates for Louisiana

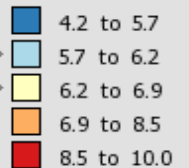
Non-Hodgkin Lymphoma, 2009 - 2013

All Races (includes Hispanic), Both Sexes, All Ages



Age-Adjusted
Annual Death Rate
(Deaths per 100,000)

[Quantile Interval](#)



Suppressed*

United States
Rate (95% C.I.)
6.0 (6.0 - 6.0)

Louisiana
Rate (95% C.I.)
6.6 (6.2 - 6.9)

Notes:

Created by statecancerprofiles.cancer.gov on 09/22/2016 4:47 pm.

[State Cancer Registries](#) may provide more current or more local data.

Data presented on the State Cancer Profiles Web Site may differ from statistics reported by the State Cancer Registries ([for more information](#)).

Source: Death data provided by the [National Vital Statistics System](#) public use data file. Death rates calculated by the National Cancer Institute using

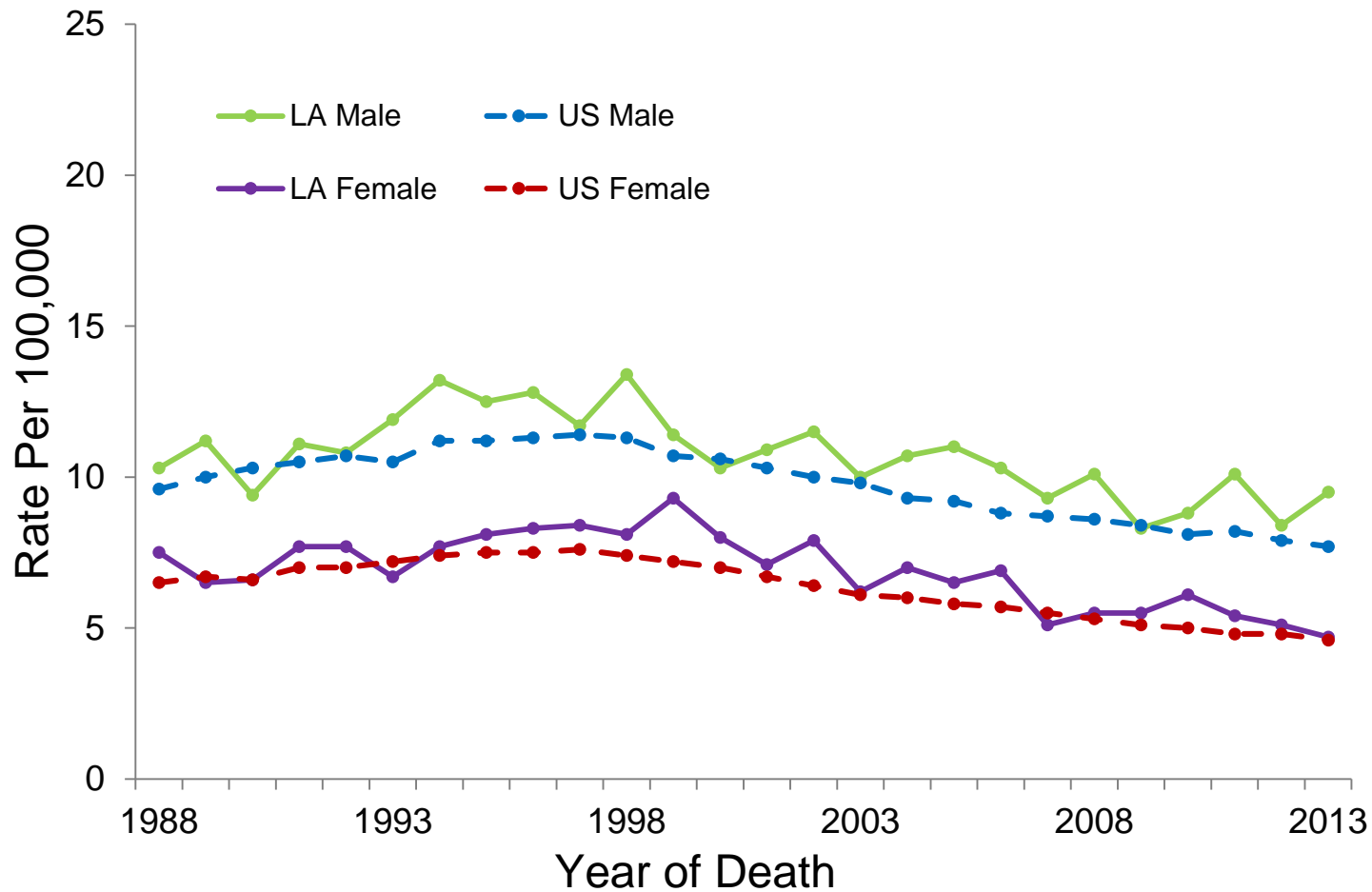
[SEER*Stat](#). Death rates (deaths per 100,000 population per year) are age-adjusted to the [2000 US standard population](#) (19 age groups: <1, 1-4, 5-9, ... , 80-84, 85+). The Healthy People 2020 goals are based on rates adjusted using different methods but the differences should be minimal.

Population counts for denominators are based on the Census [1969-2014 US Population Data](#) File as modified by NCI.

* Data have been [suppressed](#) to ensure confidentiality and stability of rate estimates. Data is currently being suppressed if there are fewer than 16 counts for the time period.

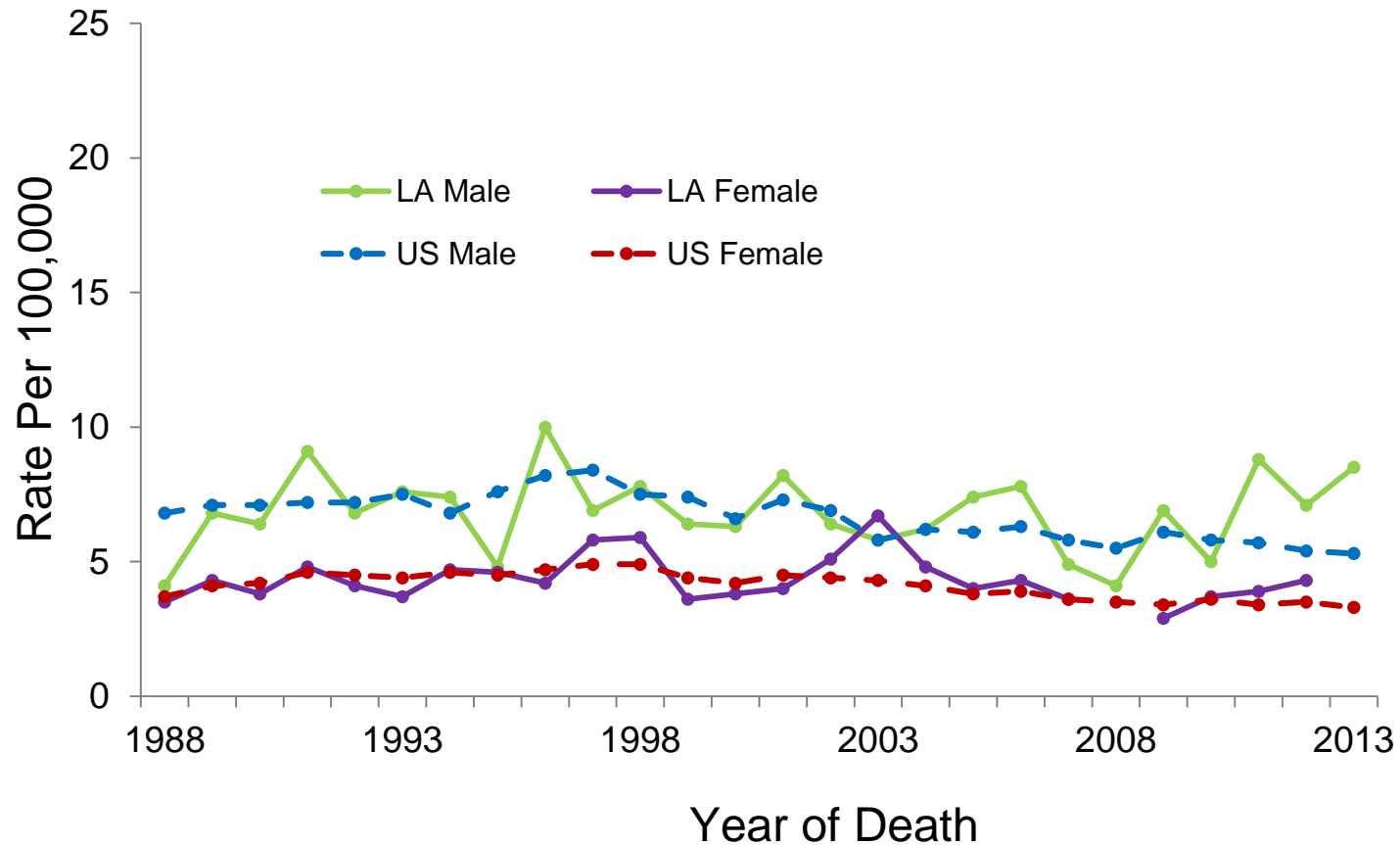
** Data have been [suppressed](#) for states with a population below 50,000 per sex combination for American Indian/Alaska Native or Asian/Pacific Islanders because of concerns regarding the relatively small size of these populations in some states.

Non-Hodgkin Lymphoma: Trends of Mortality Rates^{1,2}, Louisiana and the U.S., Whites, 1988-2013



¹ Adjusted to the 2000 U.S. standard population.
² Data source: National Center of Health Statistics (NCHS).

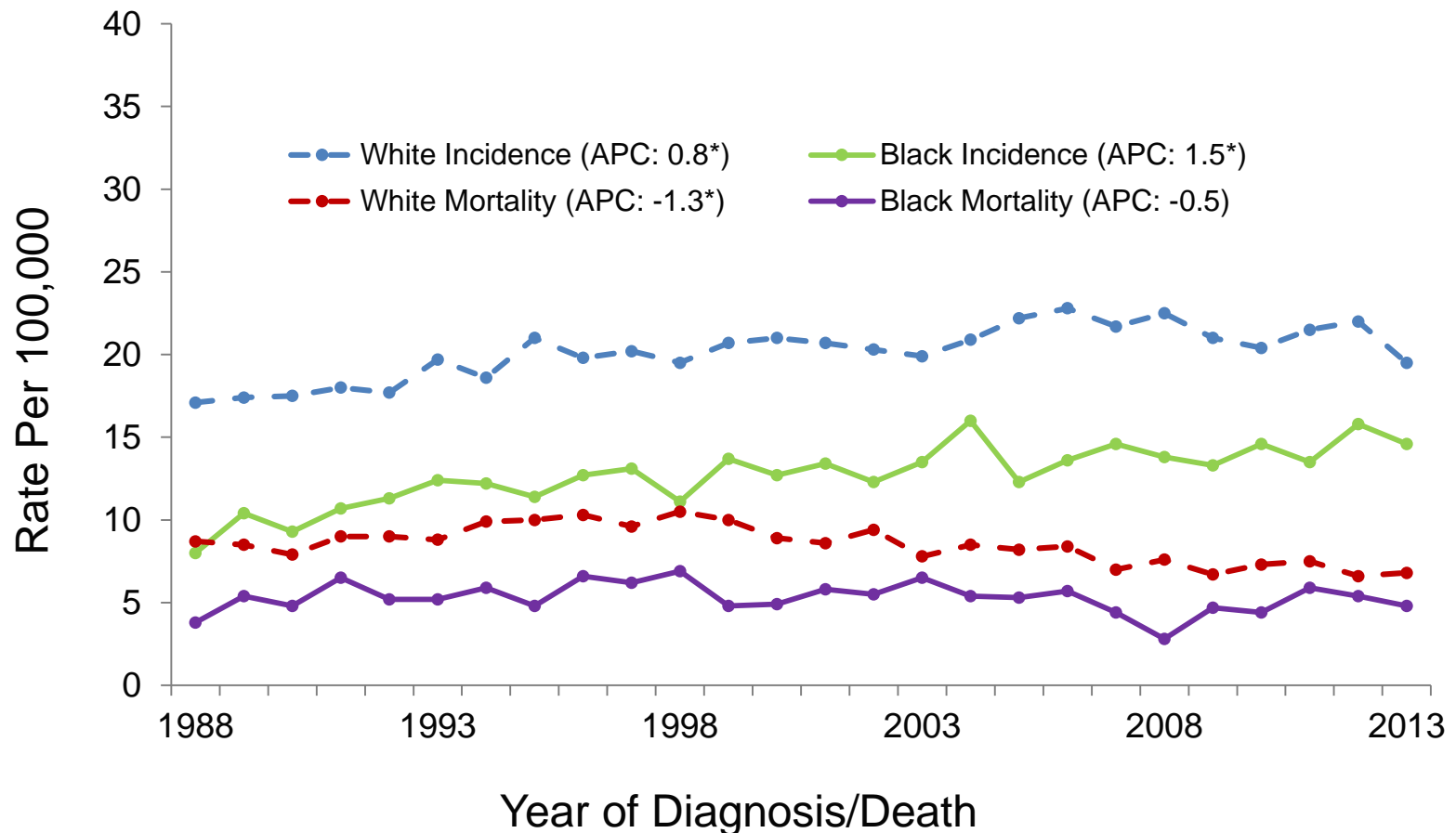
Non-Hodgkin Lymphoma: Trends of Mortality Rates^{1,2}, Louisiana and the U.S., Blacks, 1988-2013



¹ Age-adjusted to the 2000 U.S. standard population.

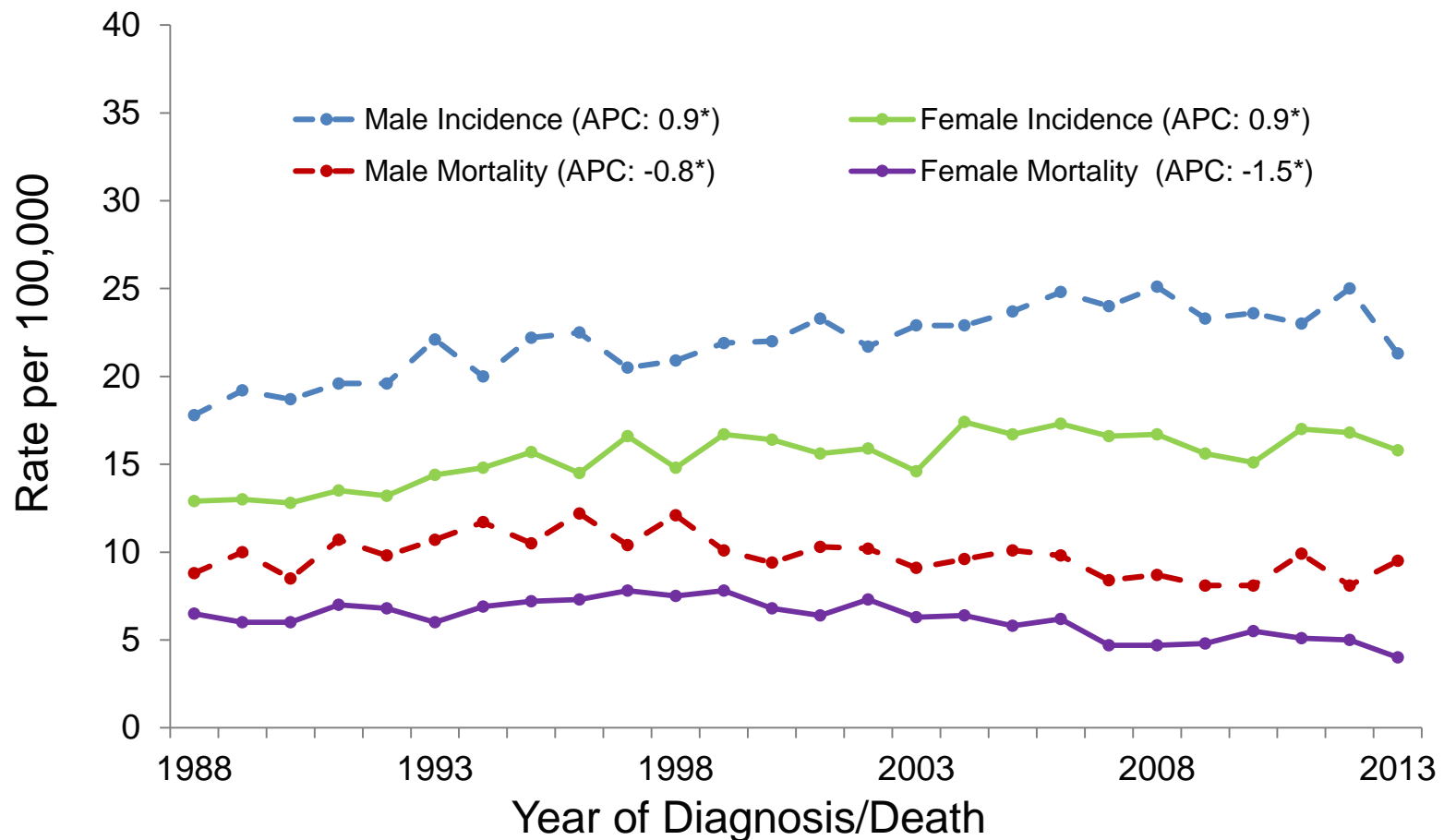
² Data source: National Center of Health Statistics (NCHS).

Non-Hodgkin Lymphoma: Trends of Incidence and Mortality Rates, by Race, Louisiana, 1988-2013



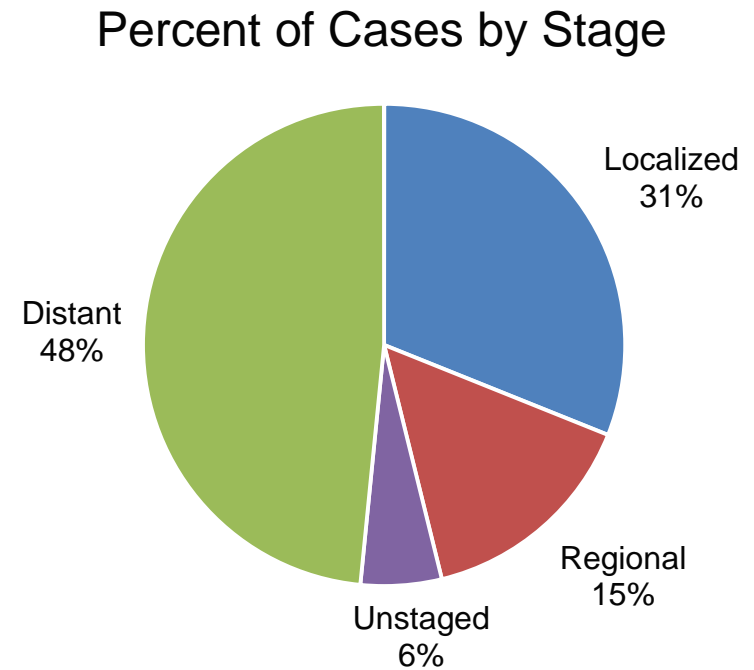
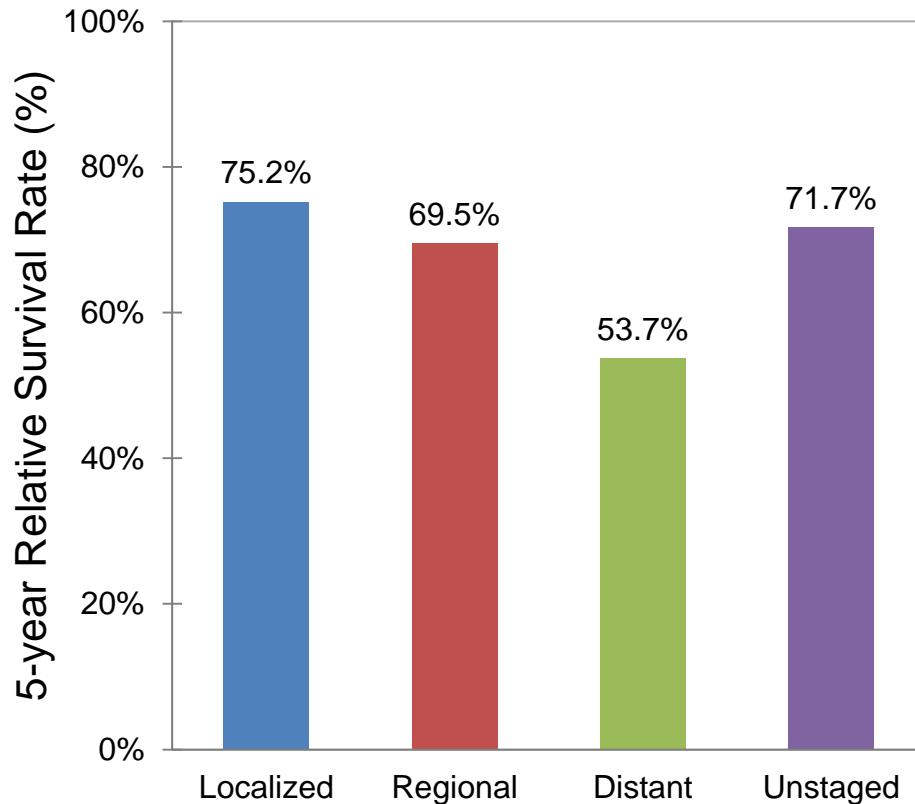
APCs were calculated using weighted least squares method

Non-Hodgkin Lymphoma: Trends of Incidence and Mortality Rates, by Gender, Louisiana, 1988-2013



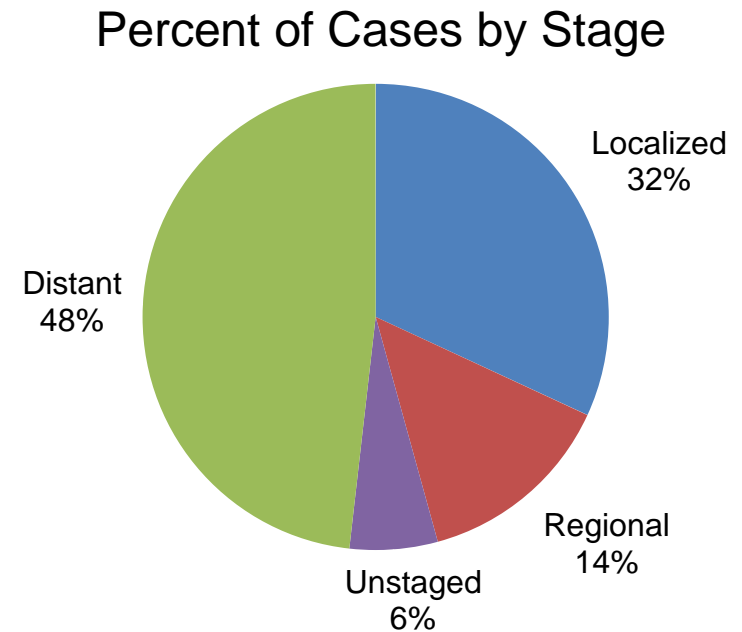
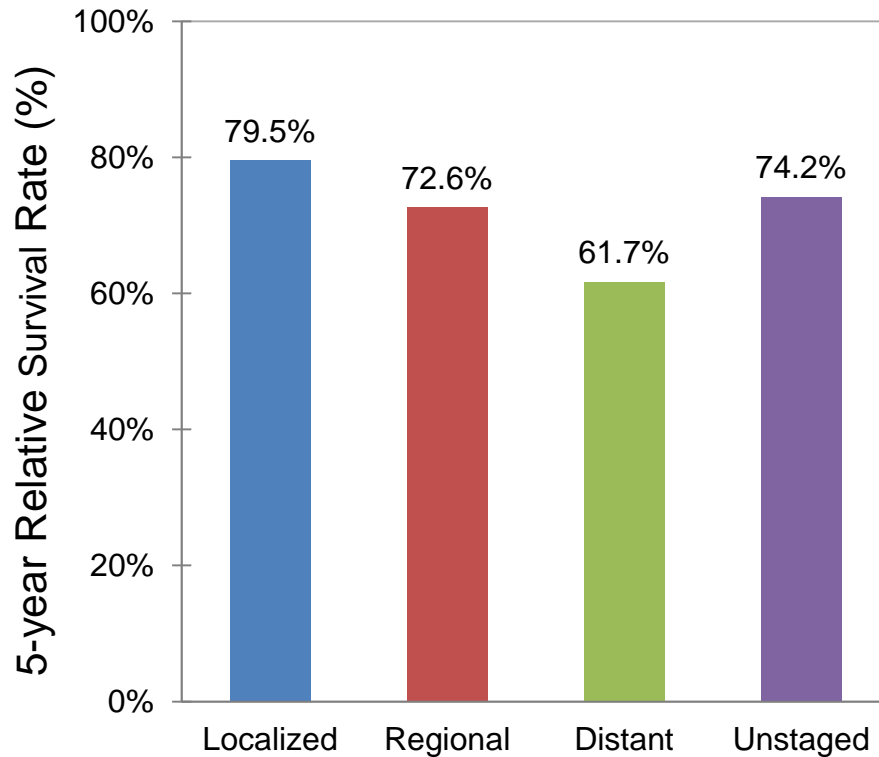
APCs were calculated using weighted least squares method

Non-Hodgkin Lymphoma: Louisiana 5-Year Relative Survival by Stage¹, White Males, 2006-2012



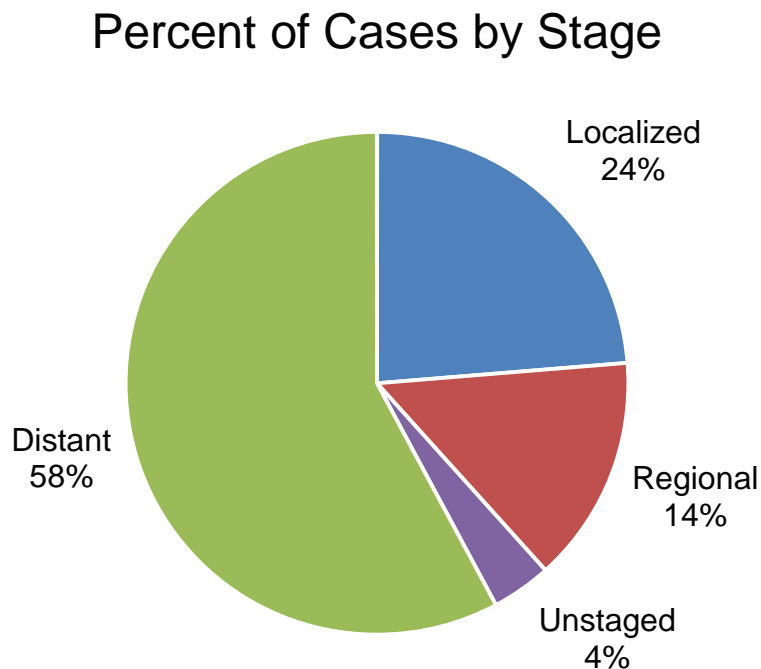
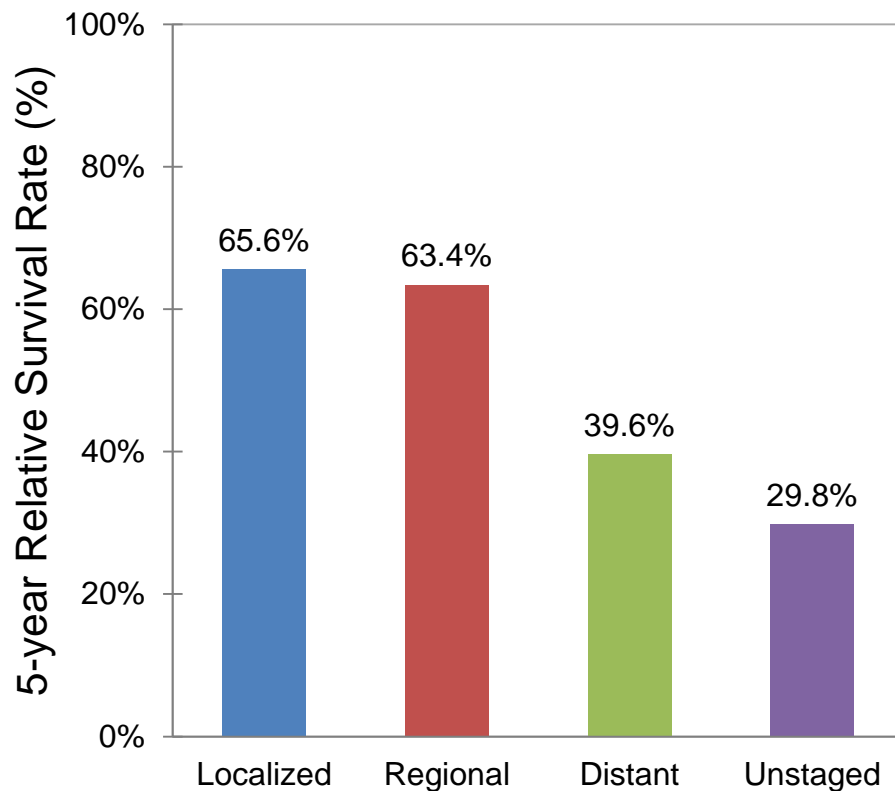
¹ The stage distribution is based on Derived Summary Stage 2000.

Non-Hodgkin Lymphoma: Louisiana 5-Year Relative Survival by Stage¹, White Females, 2006-2012



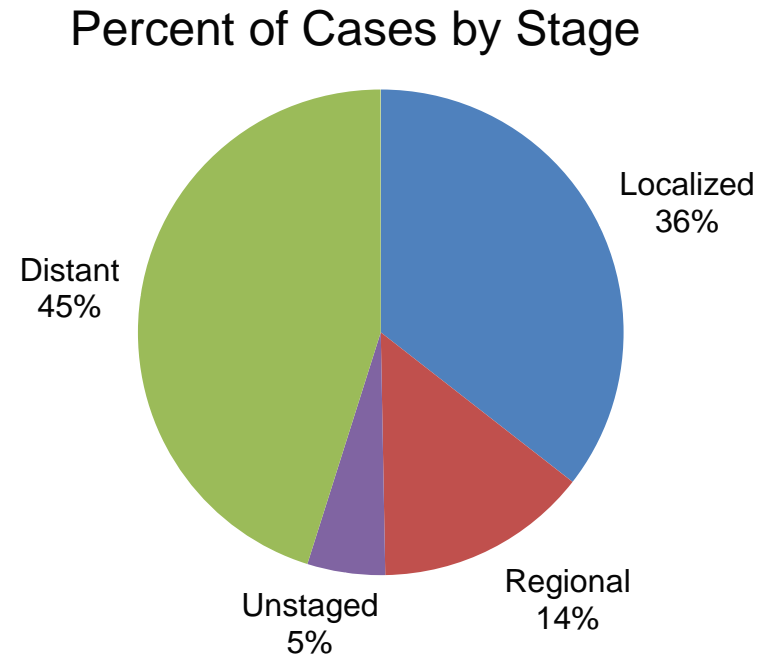
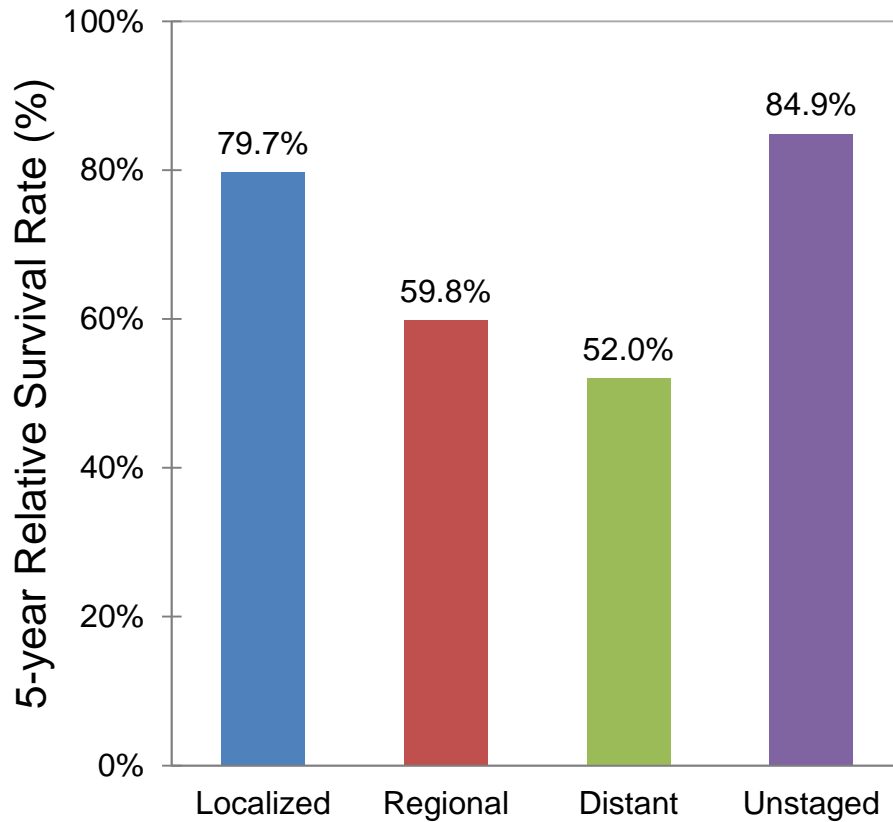
¹ The stage distribution is based on Derived Summary Stage 2000.

Non-Hodgkin Lymphoma: Louisiana 5-Year Relative Survival by Stage¹, Black Males, 2006-2012



¹ The stage distribution is based on Derived Summary Stage 2000.

Non-Hodgkin Lymphoma: Louisiana 5-Year Relative Survival by Stage¹, White Females, 2006-2012



¹ The stage distribution is based on Derived Summary Stage 2000.

Data Sources

Surveillance, Epidemiology, and End Results (SEER) Program (www.seer.cancer.gov) SEER*Stat Databases, National Cancer Institute, DCCPS, Surveillance Research Program, Surveillance Systems Branch, released April 2016, based on the November 2015 submission.

For Incidence:

- Incidence - SEER 18 Regs Research Data + Hurricane Katrina Impacted Louisiana Cases, Nov 2015 Sub (2000-2013) <Katrina/Rita Population Adjustment>
- SEER*DMS - LTR 1988-2013, June 7, 2016

For Mortality:

- mortality – all COD, aggregated with States, Total U.S. (1969-2013) <Katrina/Rita Population Adjustment>

For Survival:

- Incidence - SEER 18 Regs Research Data + Hurricane Katrina Impacted Louisiana Cases, Nov 2015 Sub (1973-2013 varying)

Acknowledgements

- **Hospital cancer registries** (<http://louisianatumorregistry.lsuhs.edu/>)
- **Louisiana Cancer Registrars' Association** (<http://www.lcra-usa.org/>)
- **Physicians and staff members in:**
 - Medical records offices
 - Pathology laboratories
 - Physician offices and clinics
 - Hospice programs and nursing homes
- **Regional and central offices of the Louisiana Tumor Registry**
(<http://louisianatumorregistry.lsuhs.edu/regionalregistries.html>)
- **School of Public Health, LSU Health Sciences Center–New Orleans**
- **Louisiana Cancer and Lung Trust Fund Board**
- **Coroners' offices**

Sources of LTR Funding

- National Cancer Institute, SEER Program
- National Program of Cancer Registries, CDC
- Louisiana Health Care Services Division

Editors

Yong Yi, PhD, MS

Meichin Hsieh, PhD, MSPH, CTR

Lauren Maniscalco, MPH

Xiaocheng Wu, MD, MPH, CTR

Contributors

Xiangrong Li, MD, MSPH

Brent Mumphrey, BS

Tina Lefante, MPH

Lisa Pareti, BS, RHIT, CTR

Questions?

Contact:

LTR-info@lsuhsc.edu

or

504/568-5757