

# Louisiana Cancer Facts & Figures, Melanoma of the Skin

Louisiana Tumor Registry

January 5, 2016

# Melanoma of the Skin\*

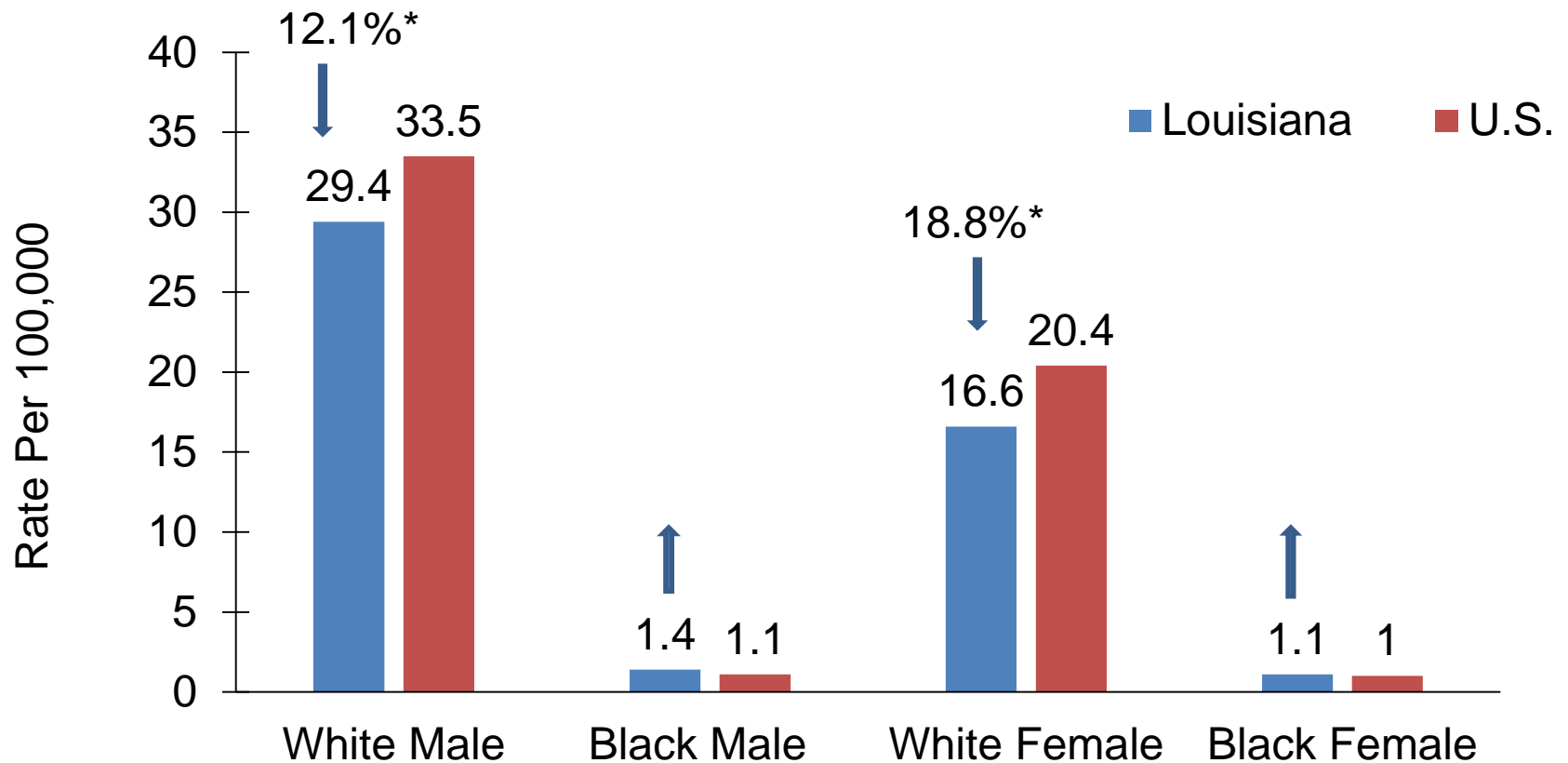
- Melanoma of the skin was the 9<sup>th</sup> most commonly diagnosed cancer in Louisiana and the 7<sup>th</sup> in the U.S.
- It was the 19<sup>th</sup> leading cause of cancer death in Louisiana and the 17<sup>th</sup> in U.S.<sup>1</sup>
- About 960 new melanoma of the skin cases are expected to be diagnosed and about 110 persons are expected to die of this cancer in Louisiana in 2017.<sup>2</sup>

<sup>1</sup> Data source: Centers for Disease Control and Prevention

<sup>2</sup> Data source: American Cancer Society, Cancer Facts & Figures 2016

\*ICD\_O\_3/WHO 2008 code:C440-449; excluding ICD-O-3 histology (type): 8720-8790

# Melanoma of the Skin Incidence Rates<sup>1</sup> Louisiana vs. US,<sup>2</sup> 2009-2013

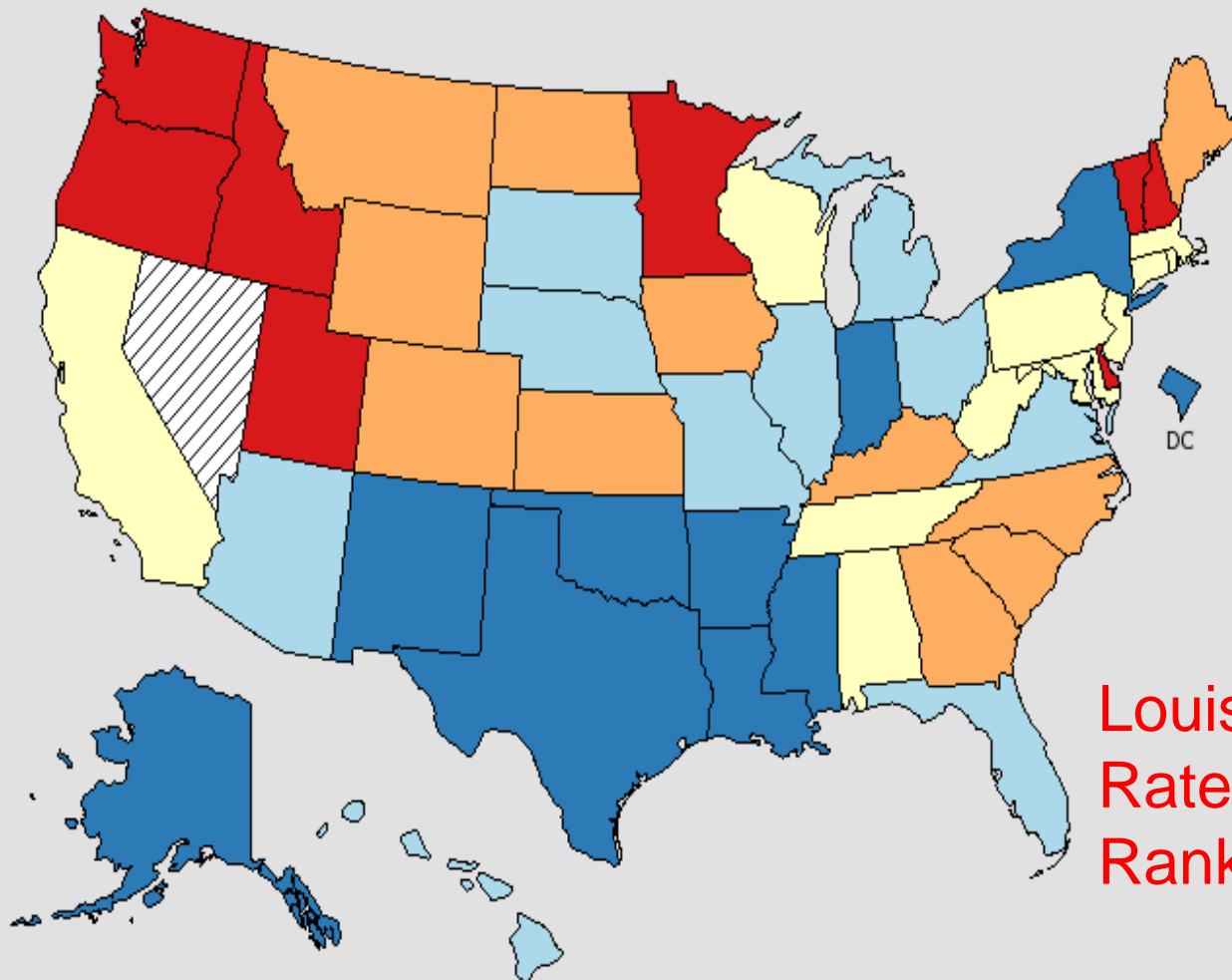


1 Age-adjusted to the 2000 U.S. standard population.

2 Incidence data source: 18 SEER registries.

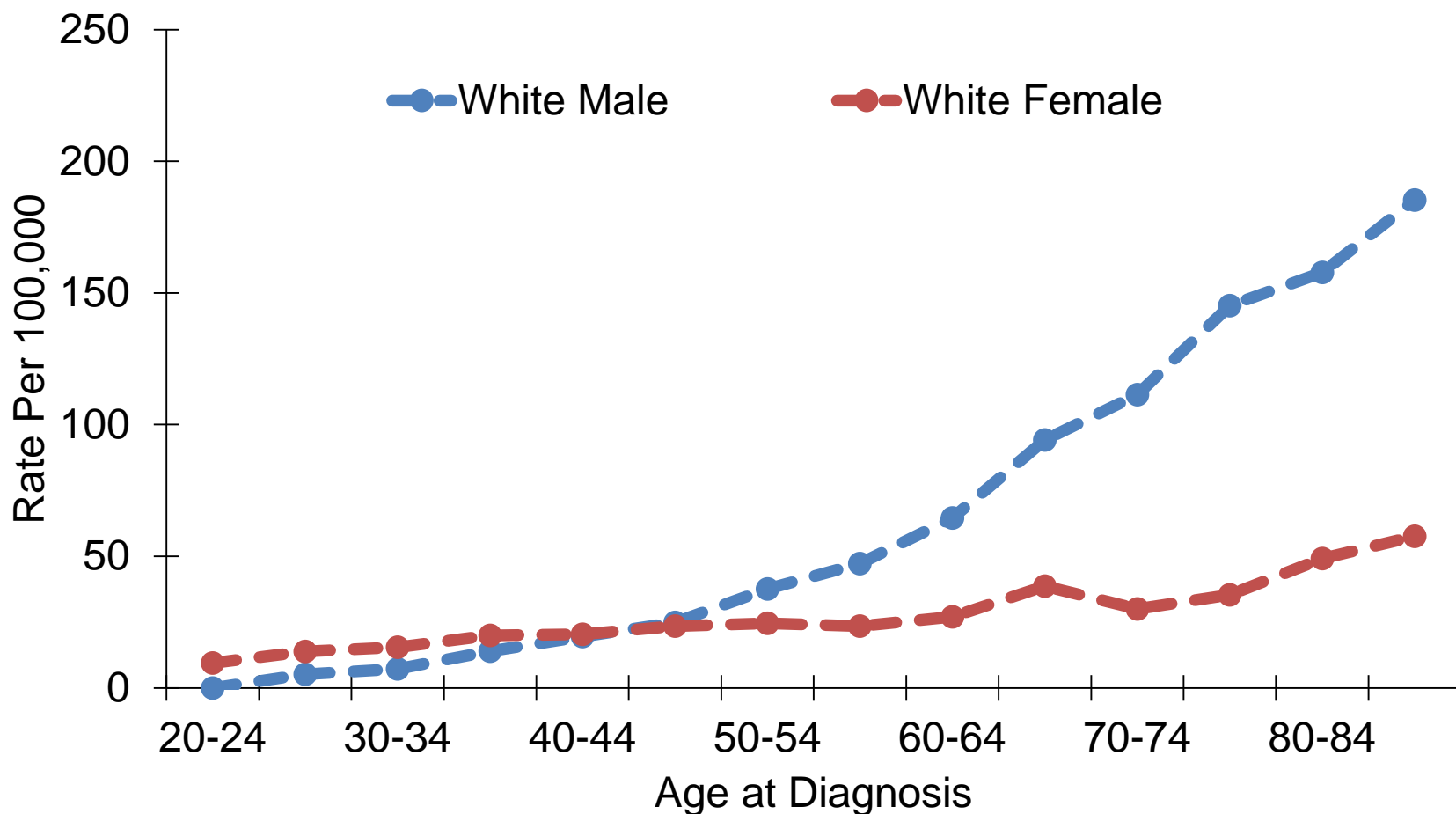
\* Incidence rate of Louisiana is significantly different from that of the U.S.

# Incidence Rates of Melanoma of the Skin in the U.S., All Races, Both Sexes, 2009-2013



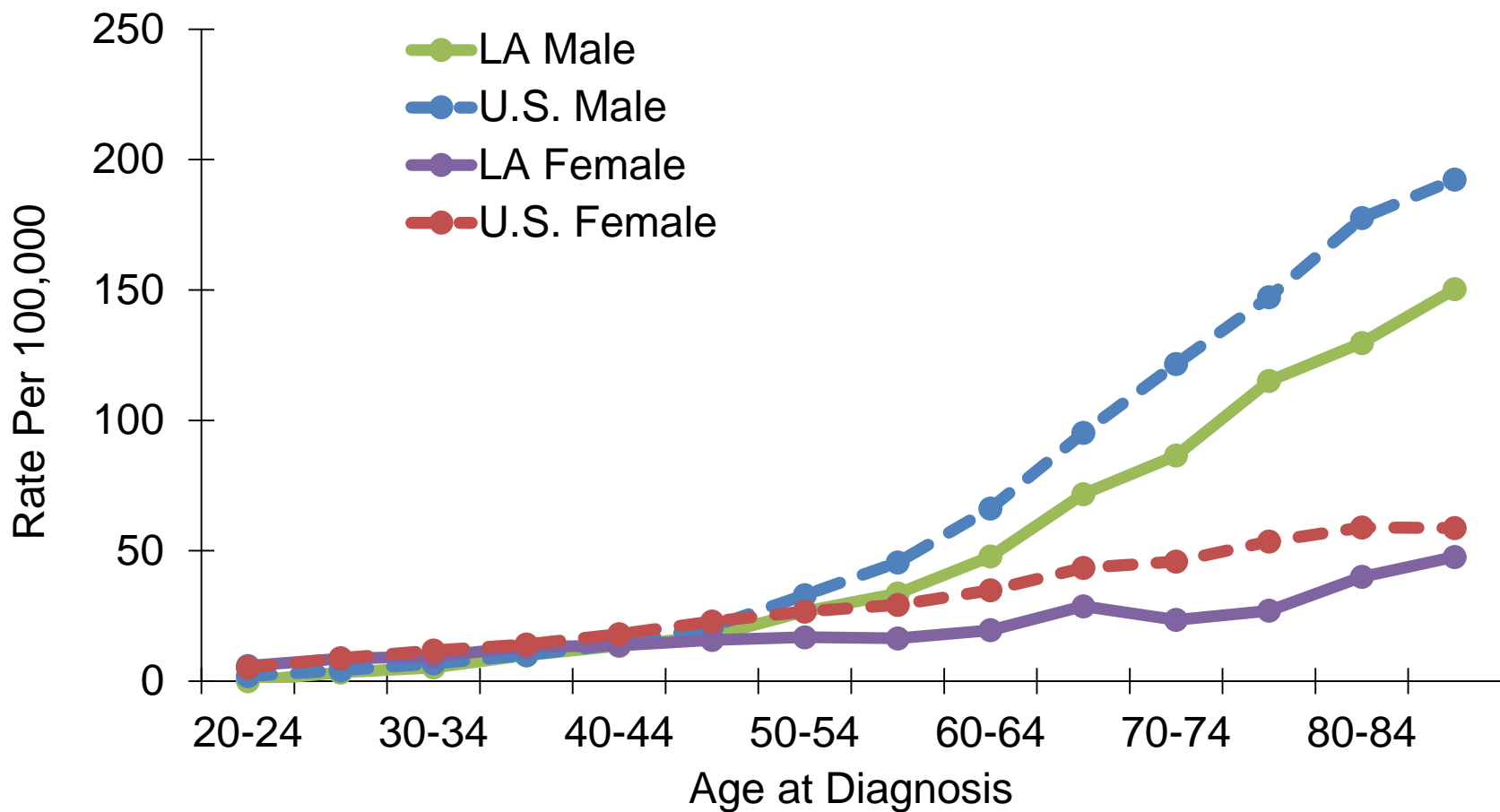
Louisiana:  
Rate: 16.0 per 100,000  
Rank: 47th

# Melanoma of the Skin: Age-Specific Incidence Rates in Louisiana by Race\*, 2009-2013



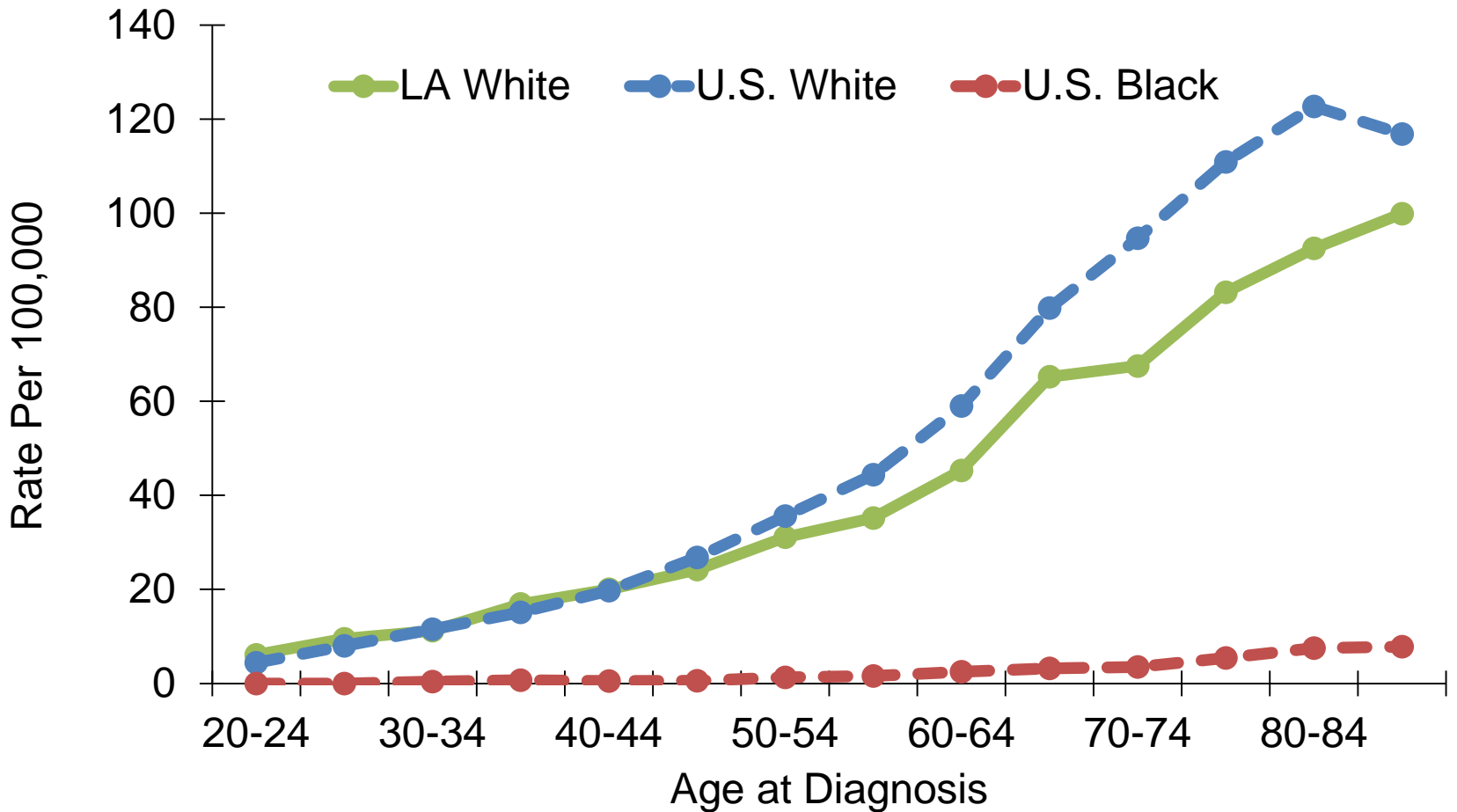
\*Age-specific incidence rates of LA black males and females could not be displayed due to small case counts.

# Melanoma of the Skin: Age-Specific Incidence Rates by Gender, 2009-2013



U.S. data source: 18 SEER registries.

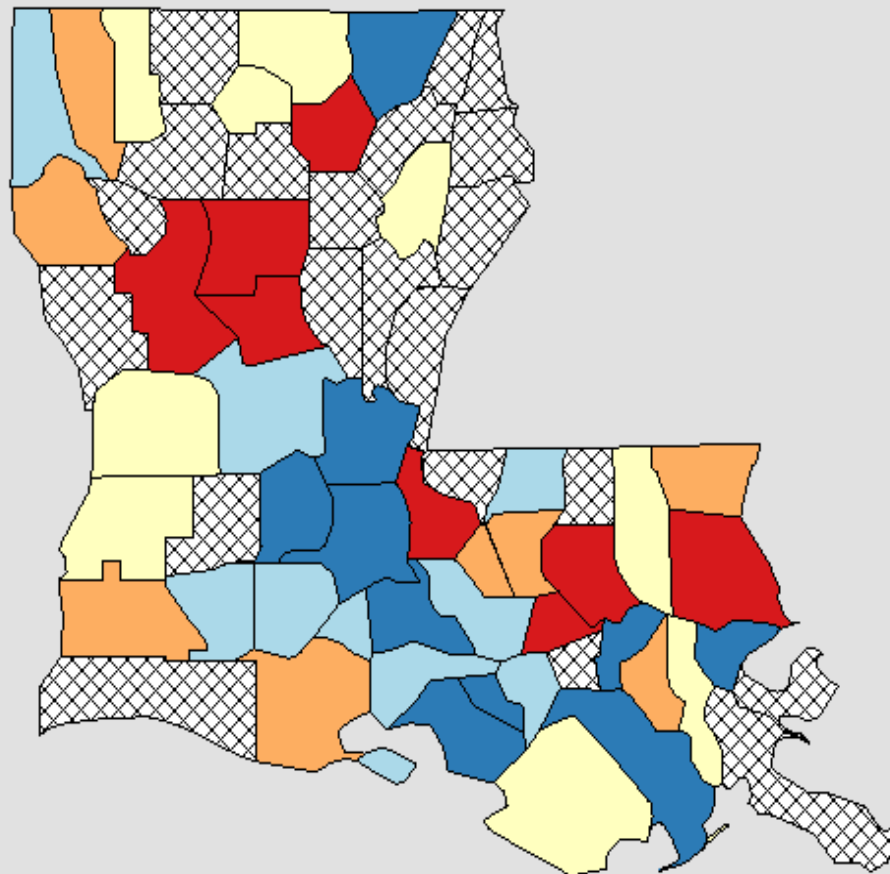
# Melanoma of the Skin: Age-Specific Incidence Rates by Race\*, 2009-2013



U.S. data source: 18 SEER registries.

\*Age-specific incidence rates for Louisiana blacks could not be displayed due to small case counts.

# Incidence Rates of Melanoma of the Skin in Louisiana, All Races, Both Sexes, 2009-2013



Age-Adjusted  
Annual Incidence Rate  
(Cases per 100,000)

Quantile Interval

- 10.3 to 12.0
- 12.0 to 15.5
- 15.5 to 17.0
- 17.0 to 19.1
- 19.1 to 26.9

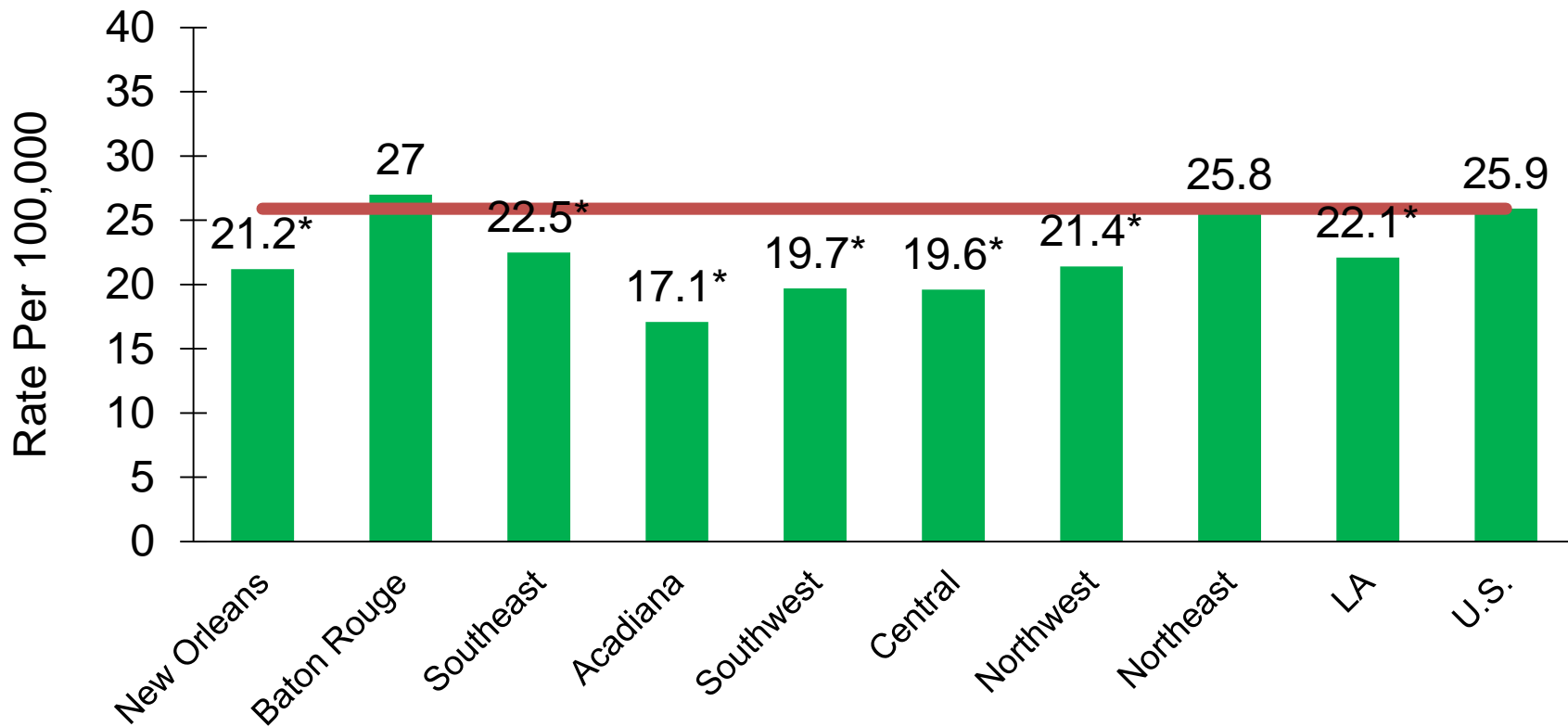
Suppressed \* / \*\*

US (SEER + NPCR)  
Rate (95% C.I.)  
20.3 (20.2 - 20.3)

Louisiana  
Rate (95% C.I.)  
16.0 (15.5 - 16.6)



# Melanoma of the Skin Incidence<sup>1,2</sup> by Region: Louisiana, Whites, 2009-2013

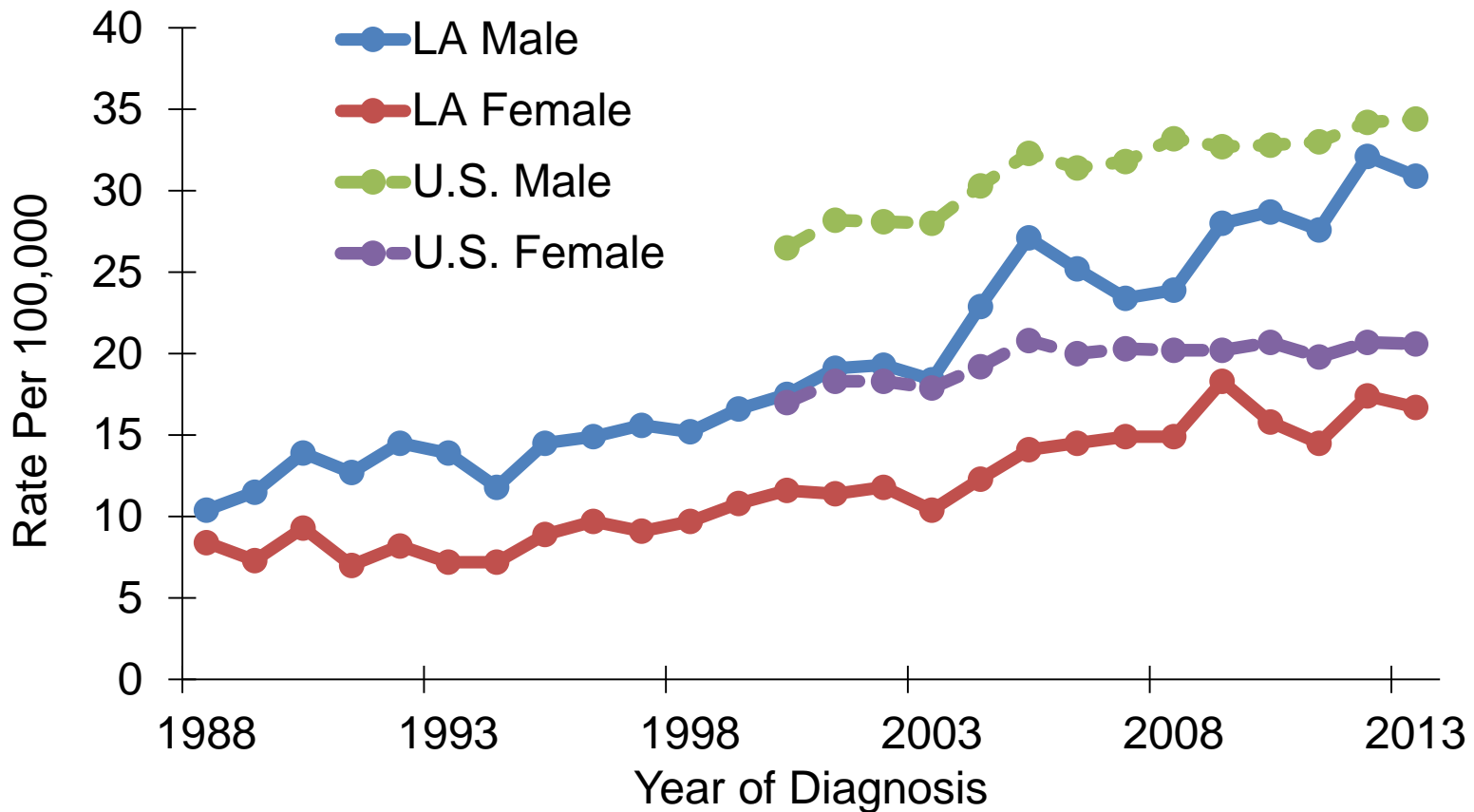


<sup>1</sup> Age-adjusted to the 2000 US standard population.

<sup>2</sup> Data source for U.S. was the 18 SEER registries.

\* Incidence rate of regions/Louisiana is significantly different from that of the U.S.

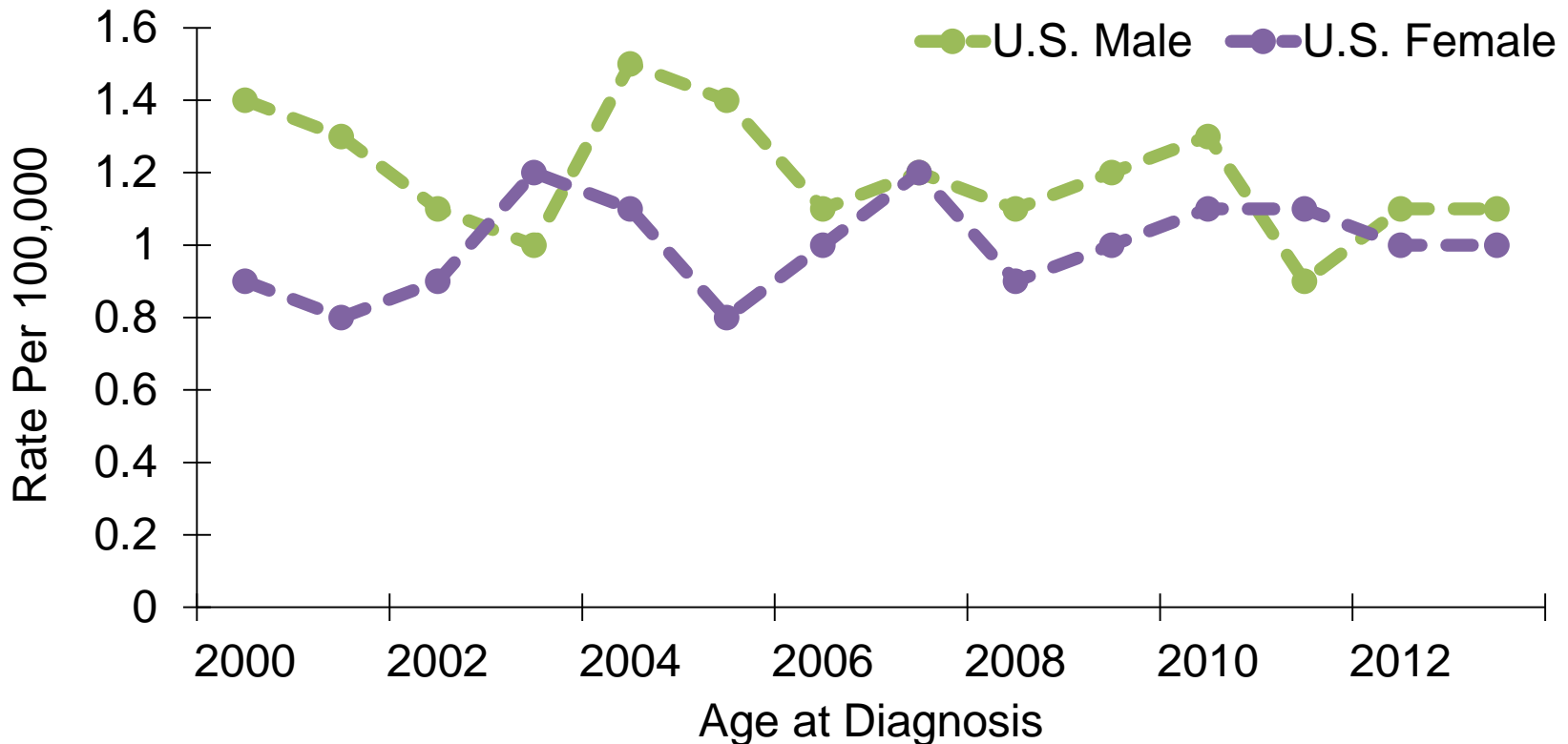
# Melanoma of the Skin: Trends of Incidence Rates<sup>1,2</sup>, Whites, 1988-2013



<sup>1</sup> Age-adjusted to the 2000 U.S. standard population.

<sup>2</sup> U.S. data source: 18 SEER registries.

# Melanoma of the Skin: Trend of Incidence Rates<sup>1,2</sup>, Blacks, 2000-2013

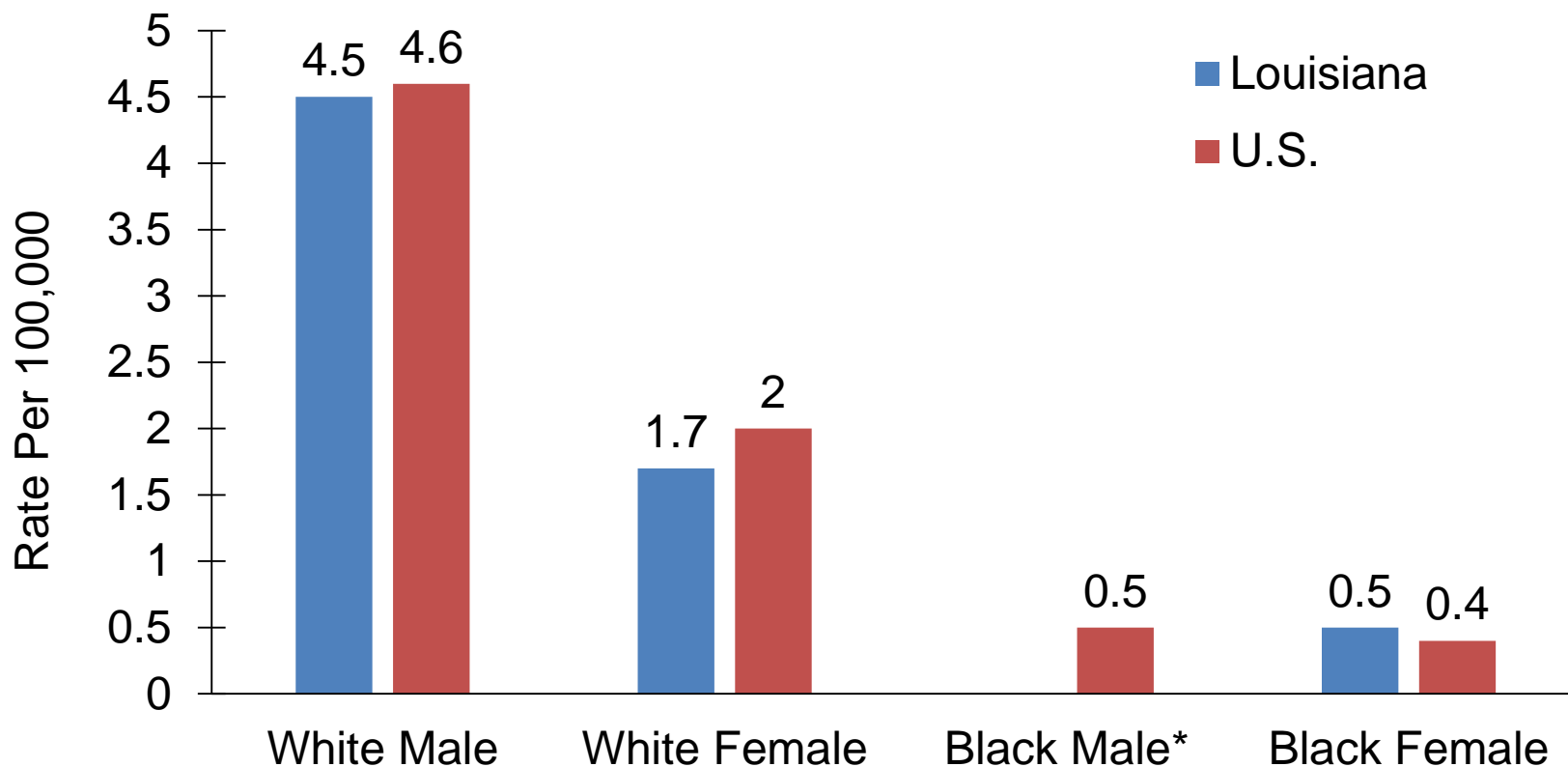


<sup>1</sup> Age-adjusted to the 2000 US standard population.

<sup>2</sup> U.S. data source: 18 SEER registries.

Trend of incidence rates for LA blacks could not be displayed due to small case counts.

# Melanoma of the Skin: Mortality Rates<sup>1,2</sup>, 2009-2013

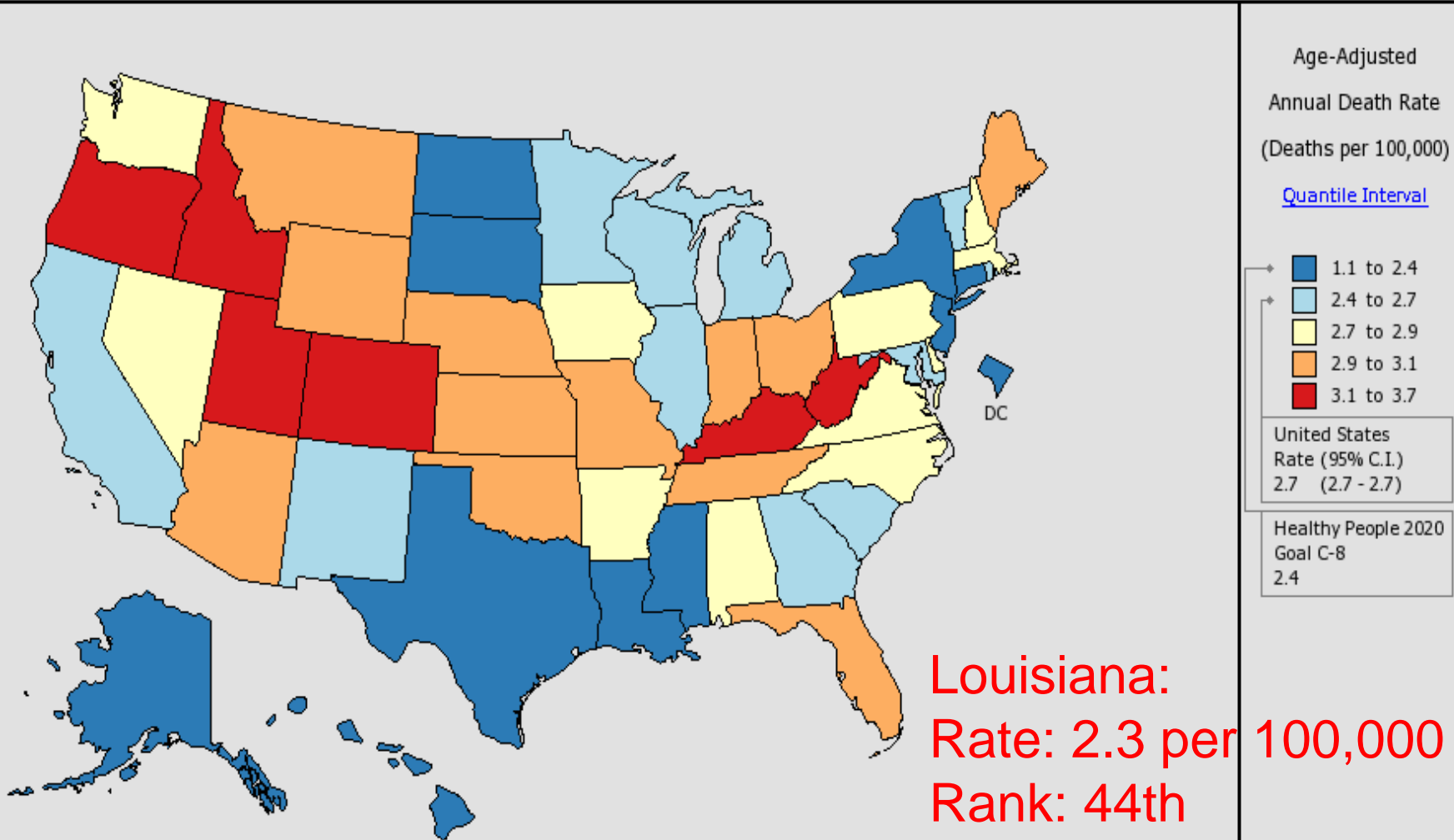


<sup>1</sup> Age-adjusted to the 2000 U.S. standard population.

<sup>2</sup> Data source: National Center of Health Statistics (NCHS).

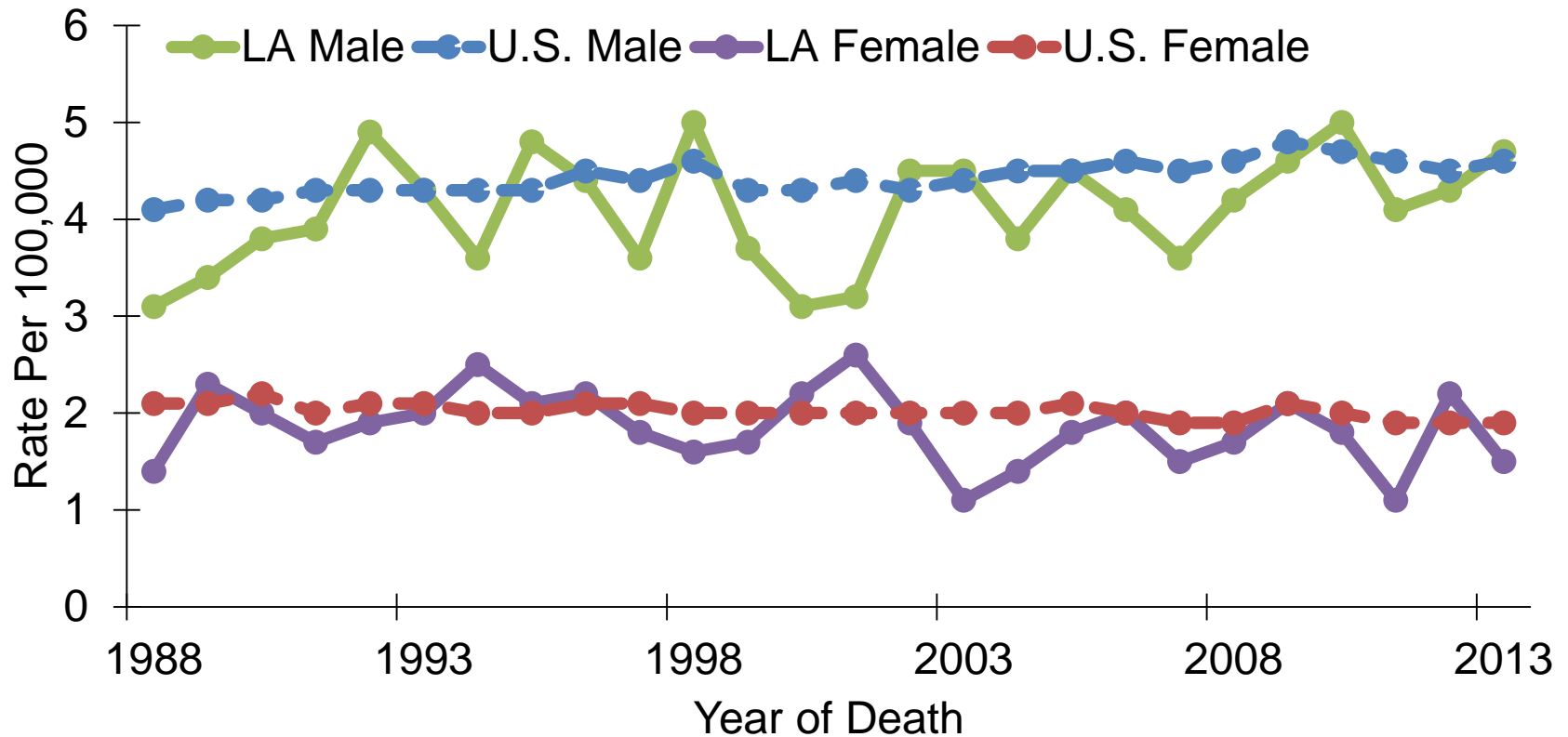
\* Mortality rate of LA black males could not be displayed due to small case counts.

# Mortality Rates of Melanoma of the Skin in the U.S., All Races, Both Sexes, 2009-2013





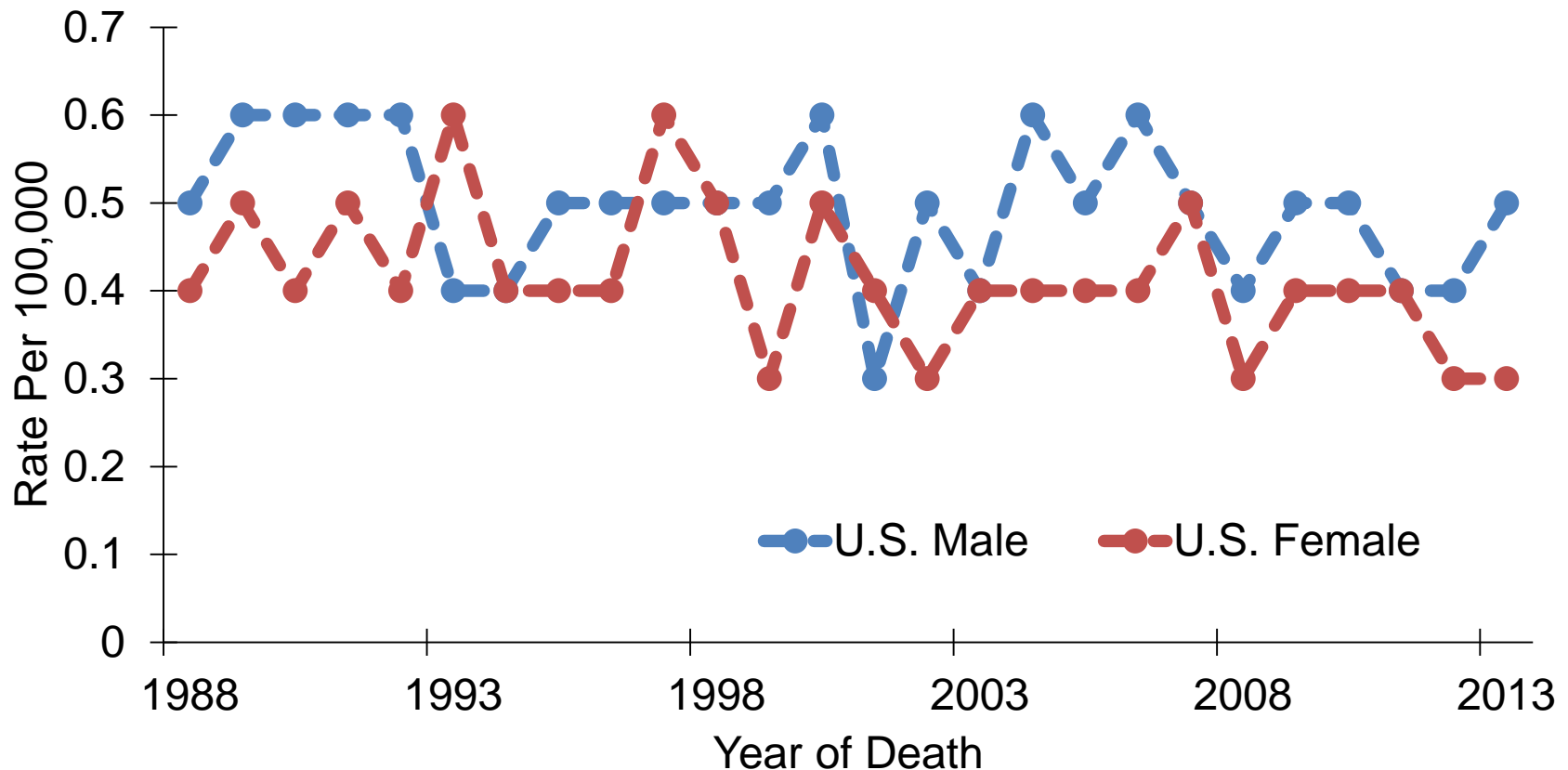
# Melanoma of the Skin: Trends of Mortality Rates<sup>1,2</sup>, Whites, 1988-2013



<sup>1</sup> Adjusted to the 2000 U.S. standard population.

<sup>2</sup> Data source: National Center of Health Statistics (NCHS).

# Melanoma of the Skin: Trends of Mortality Rates<sup>1,2,3</sup>, Blacks, 1988-2013



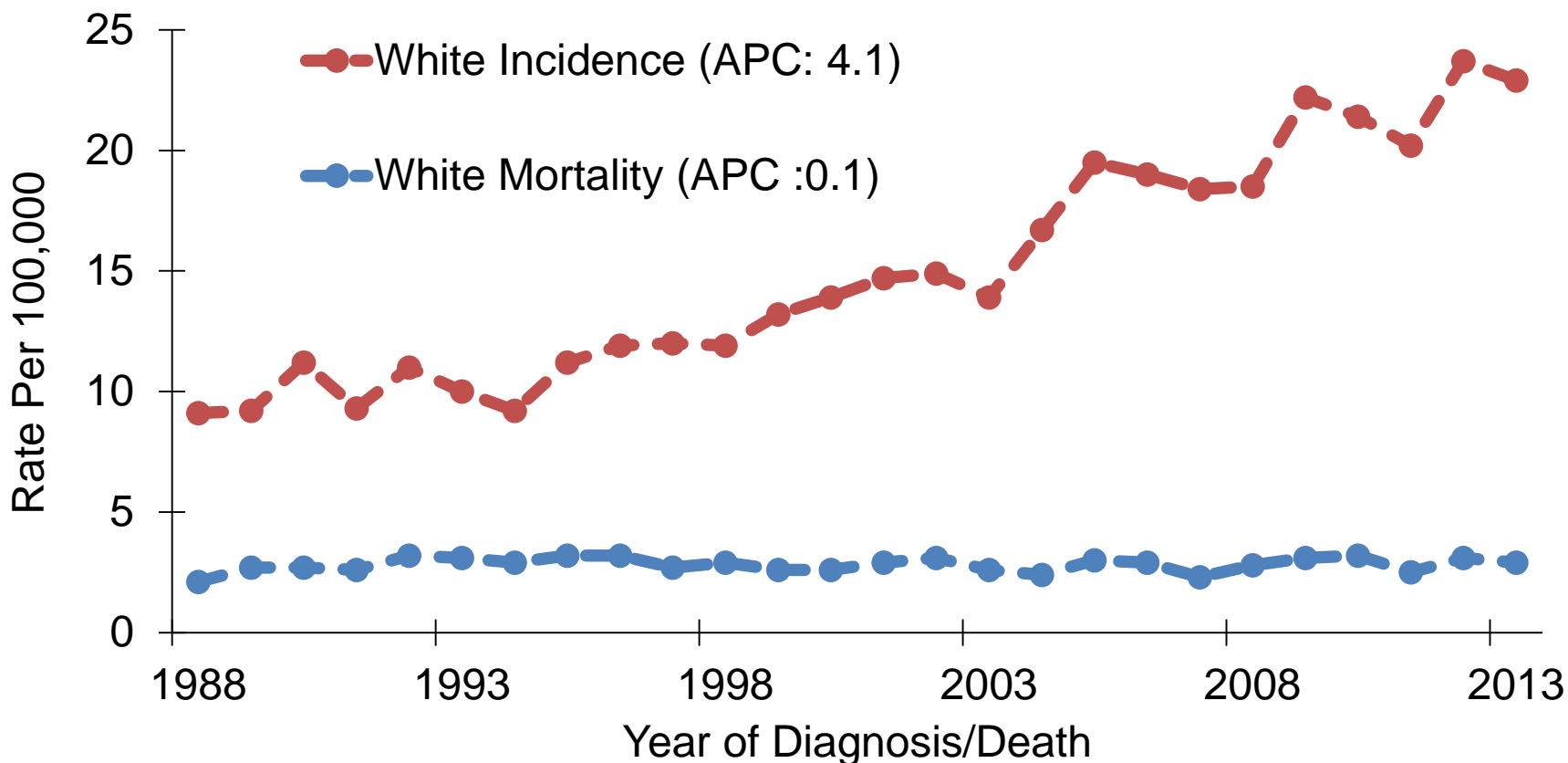
<sup>1</sup> Age-adjusted to the 2000 U.S. standard population.

<sup>2</sup> Data source: National Center of Health Statistics (NCHS).

<sup>3</sup> Trends of mortality rates for black LA males and females could not be displayed due to small case counts.



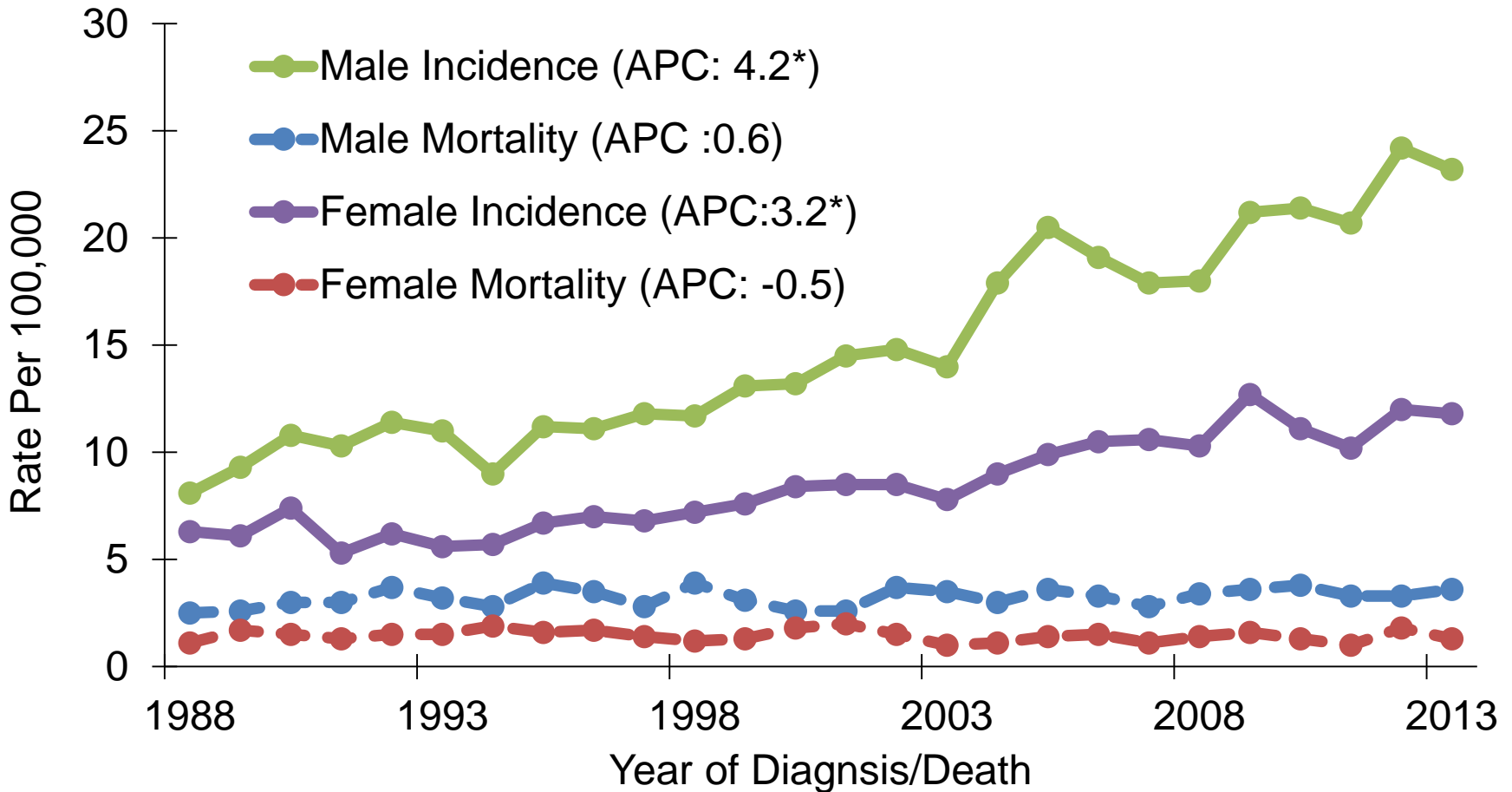
# Melanoma of the Skin: Trends of Incidence and Mortality Rates, by Race, Louisiana<sup>1</sup>, 1988-2013



APCs were calculated using weighted least squares method.

<sup>1</sup> Trends of incidence and mortality rates for black males and females in Louisiana could not be displayed due to small case counts.

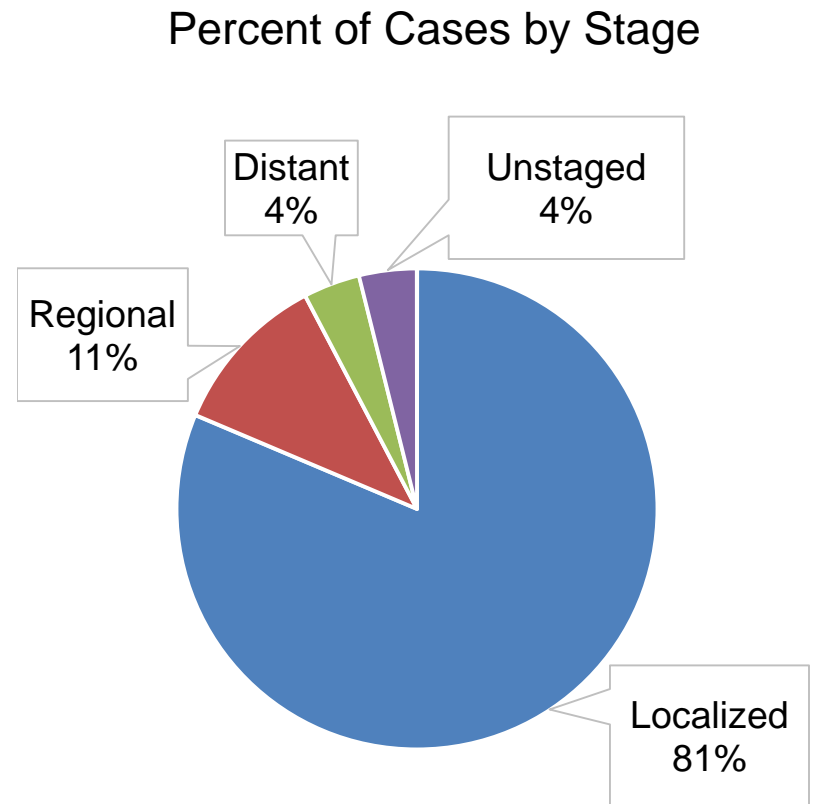
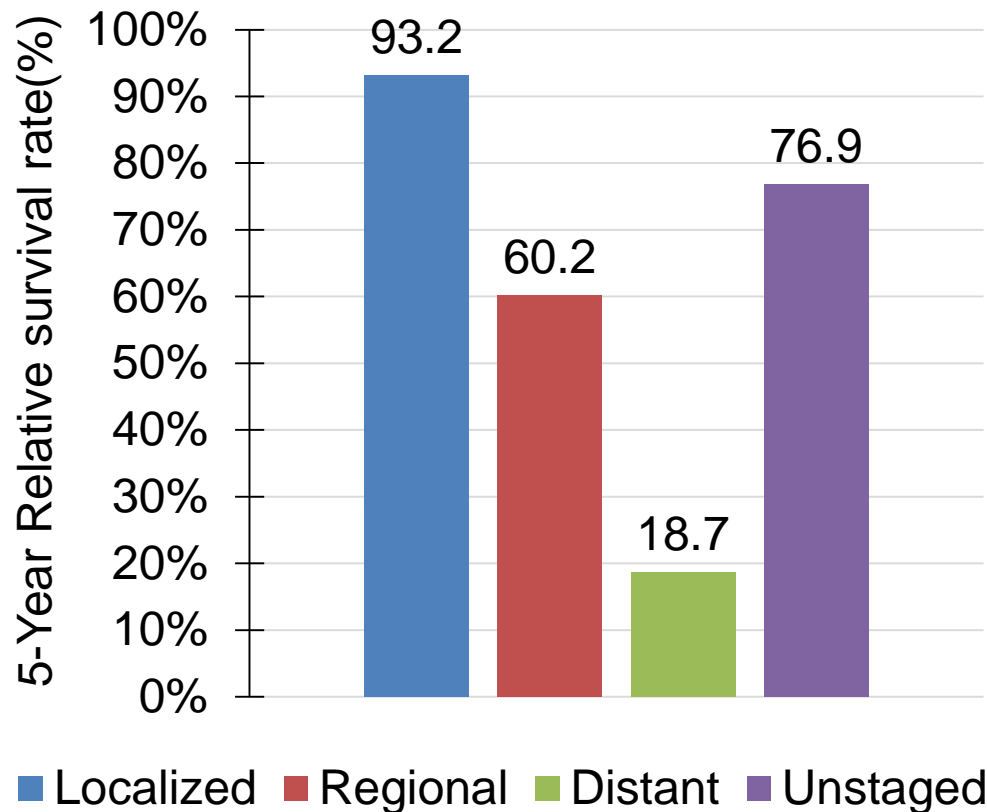
# Melanoma of the Skin: Trends of Incidence and Mortality Rates, by Gender, Louisiana, 1988-2013



\*APCs were calculated using weighted least squares method

# Melanoma of the Skin: Louisiana

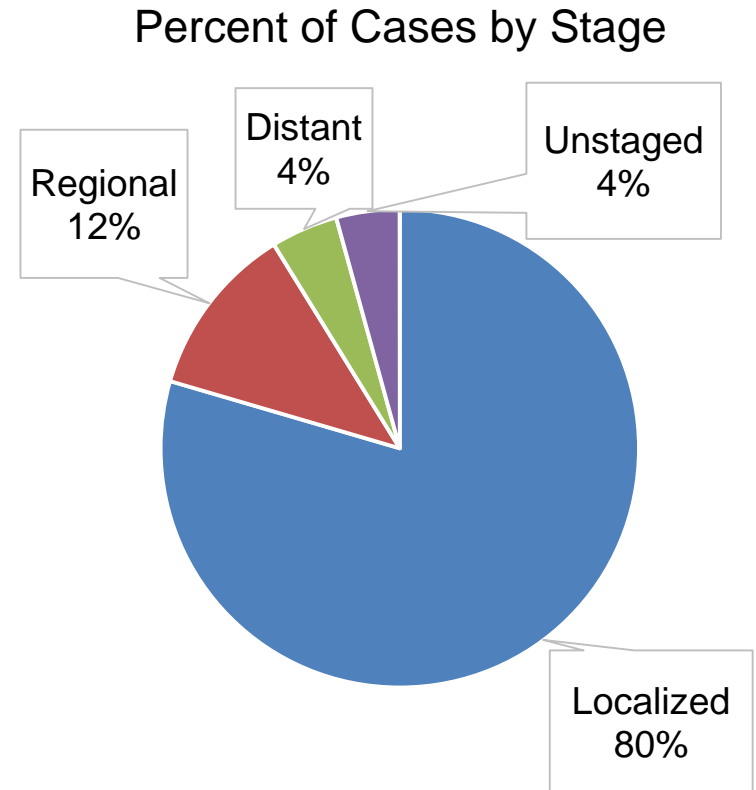
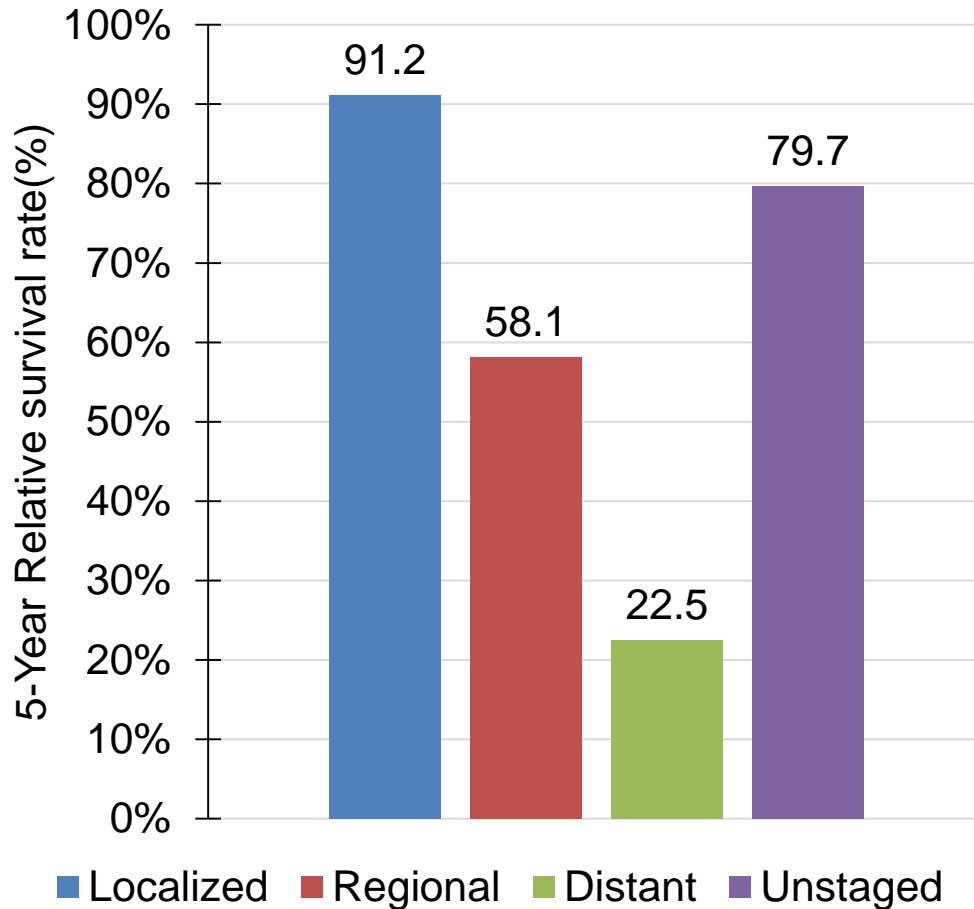
## 5-Year Relative Survival by Stage<sup>1</sup>, All Races, Both Sexes, 2006-2012



<sup>1</sup> The stage distribution is based on Derived Summary Stage 2000.

# Melanoma of the Skin: Louisiana

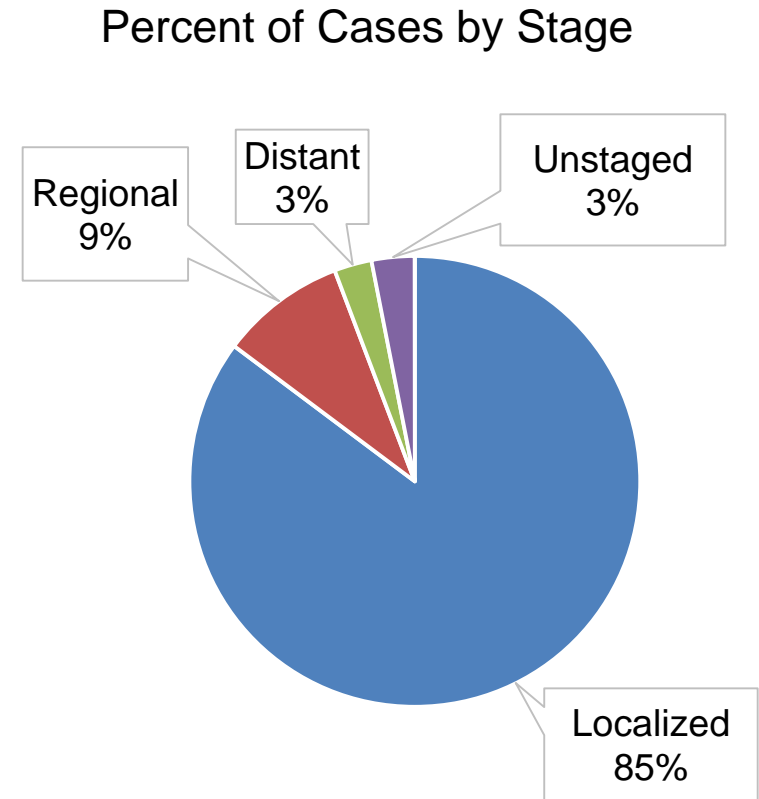
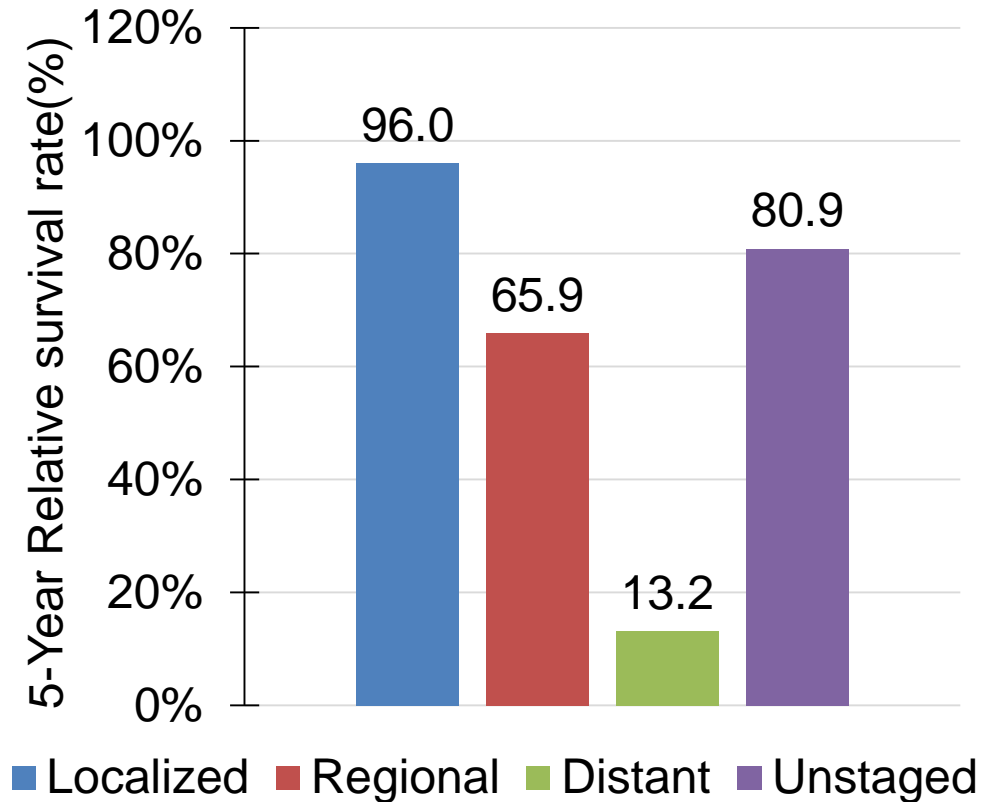
## 5-Year Relative Survival by Stage<sup>1</sup>, White Males, 2006-2012



<sup>1</sup> The stage distribution is based on Derived Summary Stage 2000.

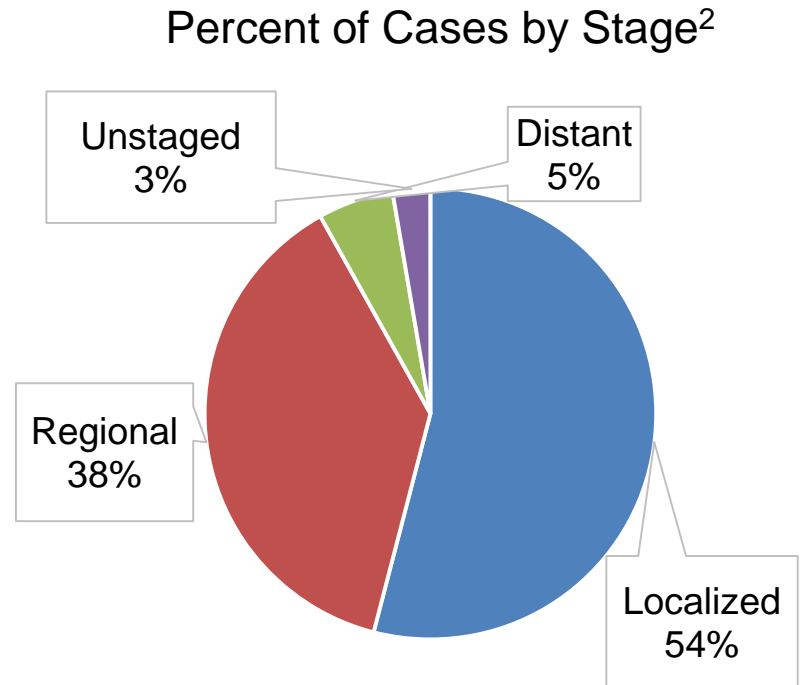
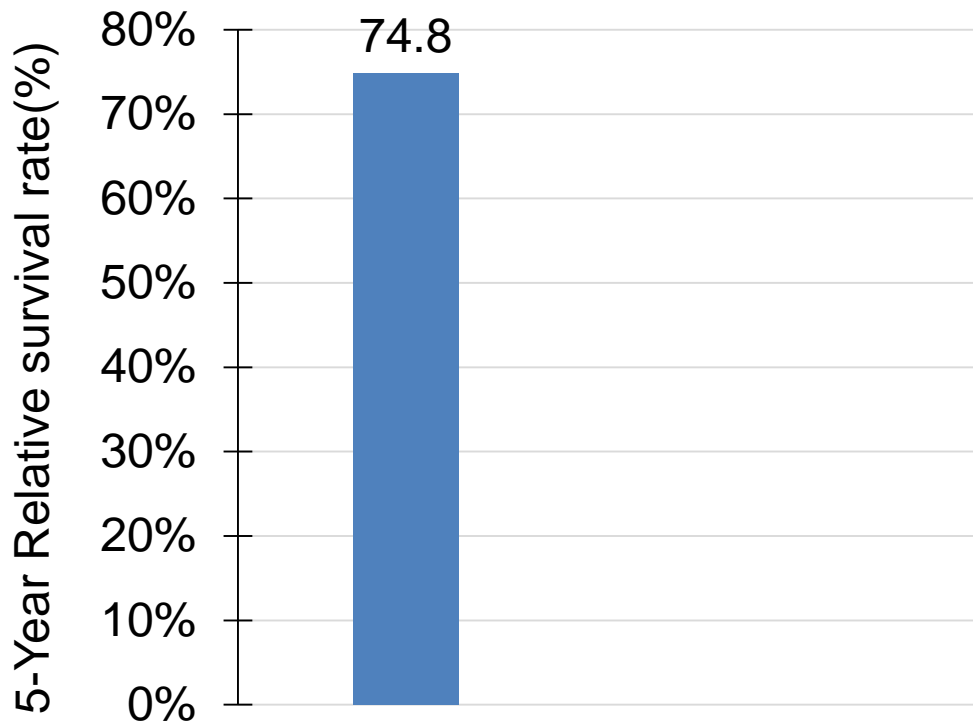
# Melanoma of the Skin: Louisiana

## 5-Year Relative Survival by Stage<sup>1</sup>, White Females, 2006-2012



<sup>1</sup> The stage distribution is based on Derived Summary Stage 2000.

# Melanoma of the Skin: Louisiana 5-Year Relative Survival by Stage<sup>1</sup>, Black Females, 2006-2012



■ Localized ■ Regional ■ Distant ■ Unstaged

<sup>1</sup> The stage distribution is based on Derived Summary Stage 2000.

<sup>2</sup> The 5-year relative survival rate for regional, distant and unstaged could not be displayed due to small case counts.

# Data Sources

**Surveillance, Epidemiology, and End Results (SEER) Program** ([www.seer.cancer.gov](http://www.seer.cancer.gov)) SEER\*Stat Databases, National Cancer Institute, DCCPS, Surveillance Research Program, Surveillance Systems Branch, released April 2016, based on the November 2015 submission.

## **For Incidence:**

- Incidence - SEER 18 Regs Research Data + Hurricane Katrina Impacted Louisiana Cases, Nov 2015 Sub (2000-2013) <Katrina/Rita Population Adjustment>
- SEER\*DMS - LTR 1988-2013, June 7, 2016

## **For Mortality:**

- mortality – all COD, aggregated with States, Total U.S. (1969-2013) <Katrina/Rita Population Adjustment>

## **For Survival:**

- Incidence - SEER 18 Regs Research Data + Hurricane Katrina Impacted Louisiana Cases, Nov 2015 Sub (1973-2013 varying)

# Acknowledgements

- **Hospital cancer registries** (<http://louisianatumorregistry.lsuhs.edu/>)
- **Louisiana Cancer Registrars' Association** (<http://www.lcra-usa.org/>)
- **Physicians and staff members in:**
  - Medical records offices
  - Pathology laboratories
  - Physician offices and clinics
  - Hospice programs and nursing homes
- **Regional and central offices of the Louisiana Tumor Registry**  
(<http://louisianatumorregistry.lsuhs.edu/regionalregistries.html>)
- **School of Public Health, LSU Health Sciences Center–New Orleans**
- **Louisiana Cancer and Lung Trust Fund Board**
- **Coroners' offices**



# Sources of LTR Funding

- National Cancer Institute, SEER Program
- National Program of Cancer Registries, CDC
- Louisiana Health Care Services Division

# Editors

Shuang Yang, MPH

Meichin Hsieh, PhD, MSPH, CTR

Lauren Maniscalco, MPH

Xiaocheng Wu, MD, MPH, CTR

# Contributors

Xiangrong Li, MD, MSPH

Brent Mumphrey, BS

Tina Lefante, MPH

Lisa Pareti, BS, RHIT, CTR

Yong Yi, PhD, MS

# Questions?

Contact:

[LTR-info@lsuhsc.edu](mailto:LTR-info@lsuhsc.edu)

or

504-568-5757