

Louisiana Cancer Facts & Figures, Lung & Bronchus Cancer, 2016

Louisiana Tumor Registry

February, 2017

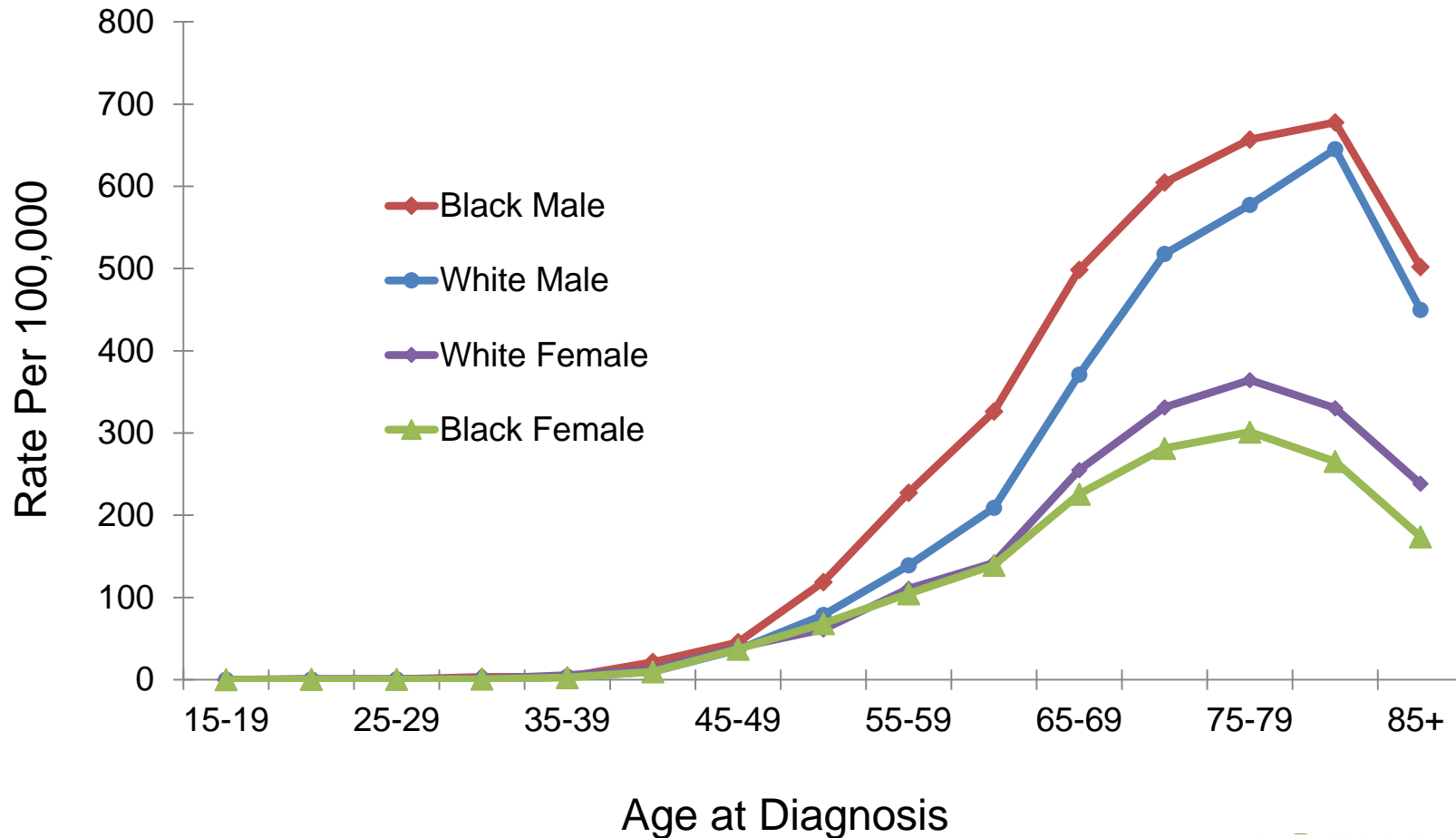
Lung & Bronchus Cancer

- Lung cancer was the 2nd most common cancer and the leading cause of cancer deaths in Louisiana from 2009 to 2013.¹
- Between 2009 and 2013, the Louisiana incidence rate for lung cancer ranked 9th and the mortality rate ranked 8th in the nation.¹
- About 3,730 new lung cancers are expected to be diagnosed and about 2,620 patients are expected to die of lung cancer in 2016 in Louisiana.²

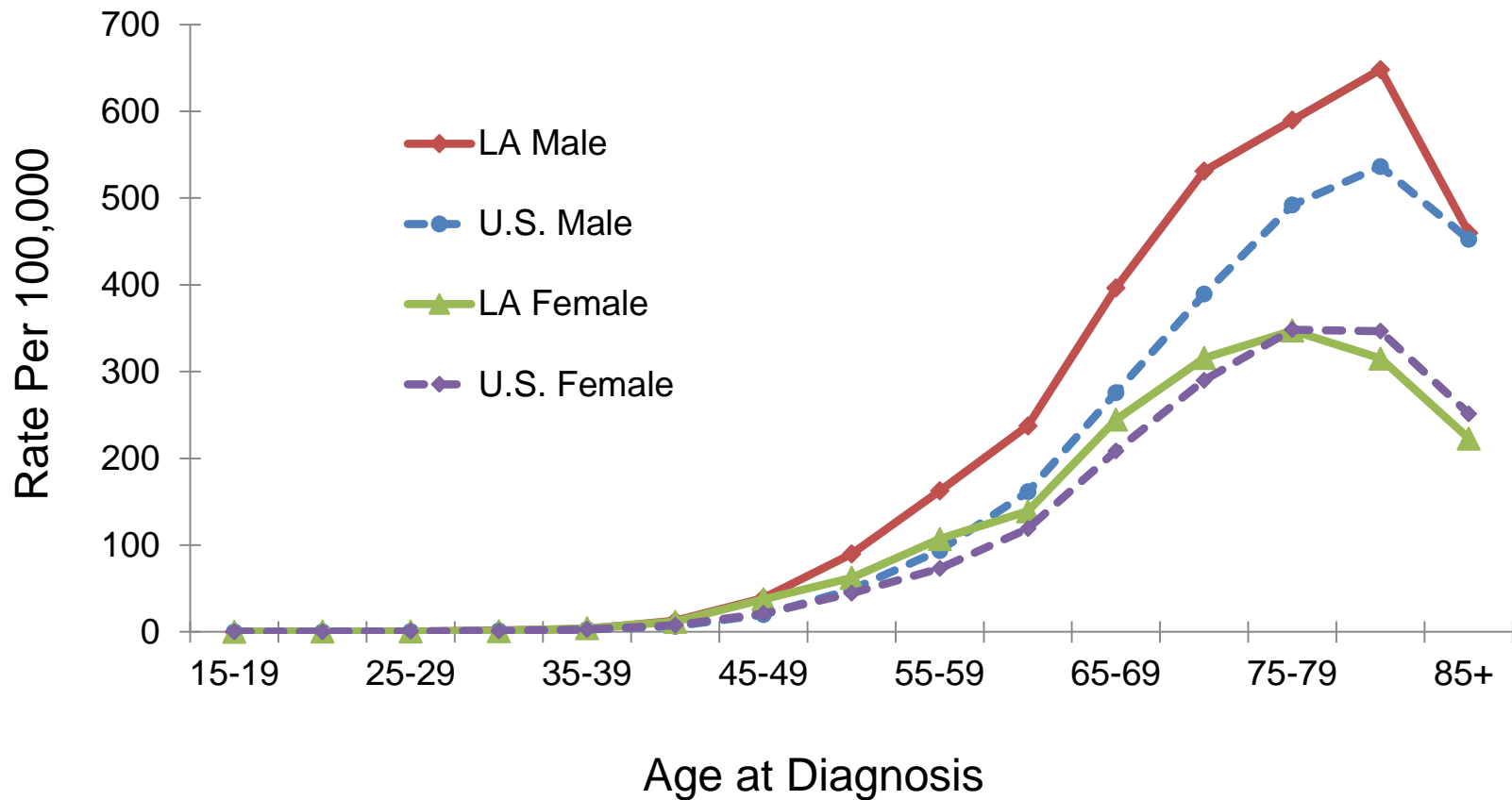
1. Data source: NCI state cancer profile.

2. Data source: American Cancer Society, Cancer Facts & Figures 2016

Lung & Bronchus Cancer: Age-Specific Incidence Rates, Louisiana, 2009-2013

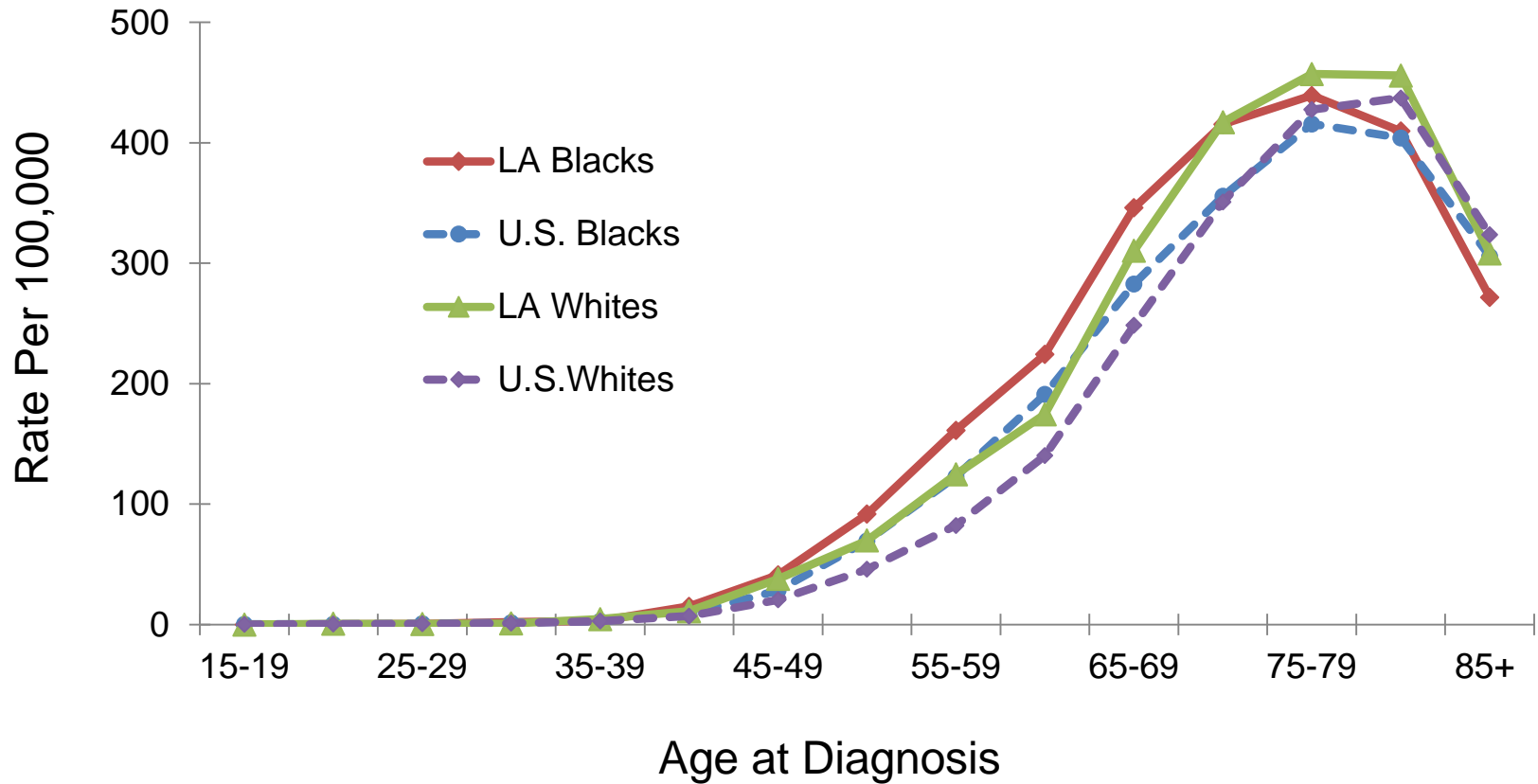


Lung & Bronchus Cancer: Age-Specific Incidence Rates by Gender, 2009-2013



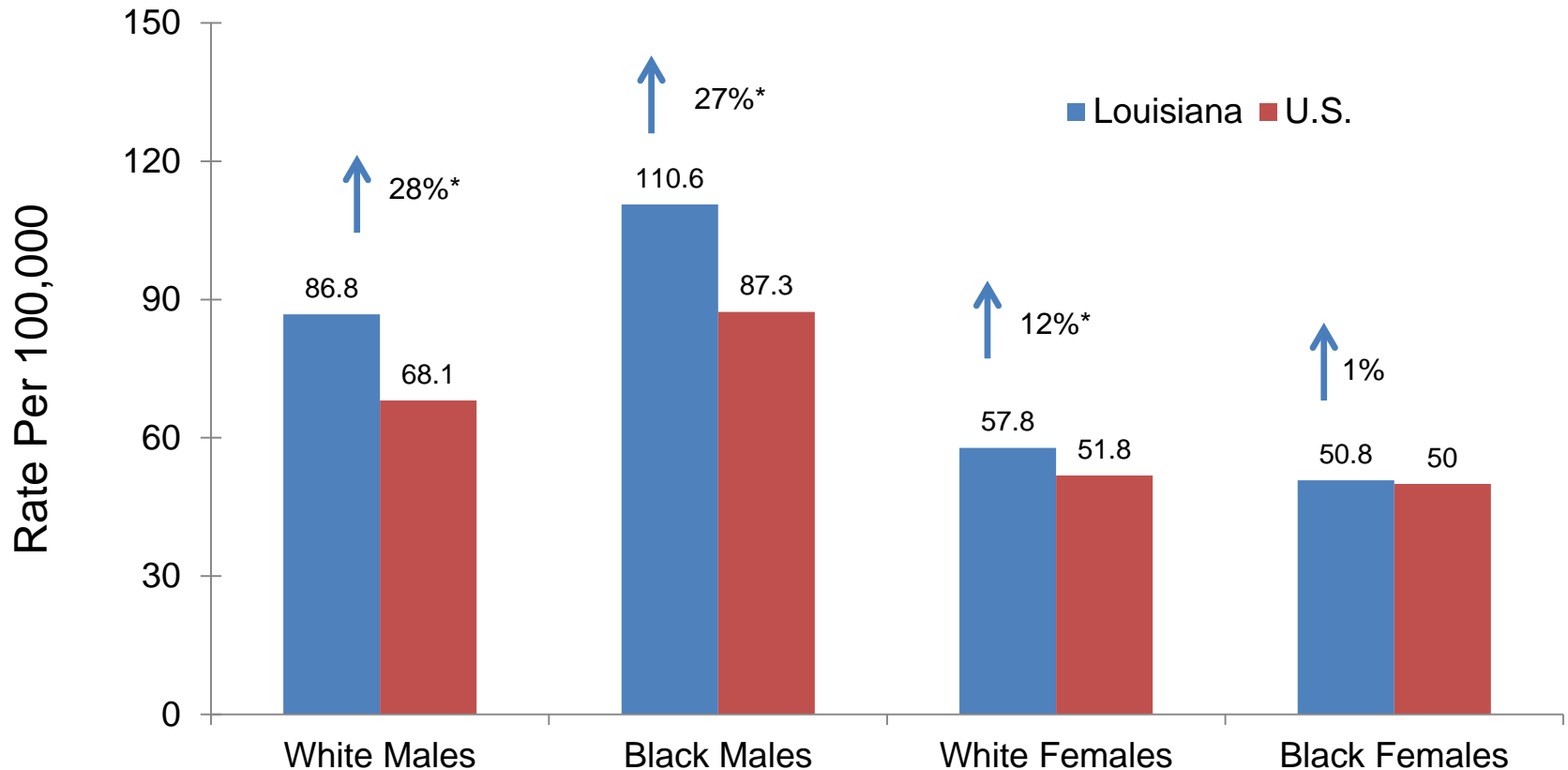
U.S. data source: 18 SEER registries.

Lung & Bronchus Cancer: Age-Specific Incidence Rates by Race, 2009-2013



U.S. data source: 18 SEER registries.

Lung & Bronchus Cancer: Incidence Rates¹, Louisiana vs. U.S.,² 2009-2013

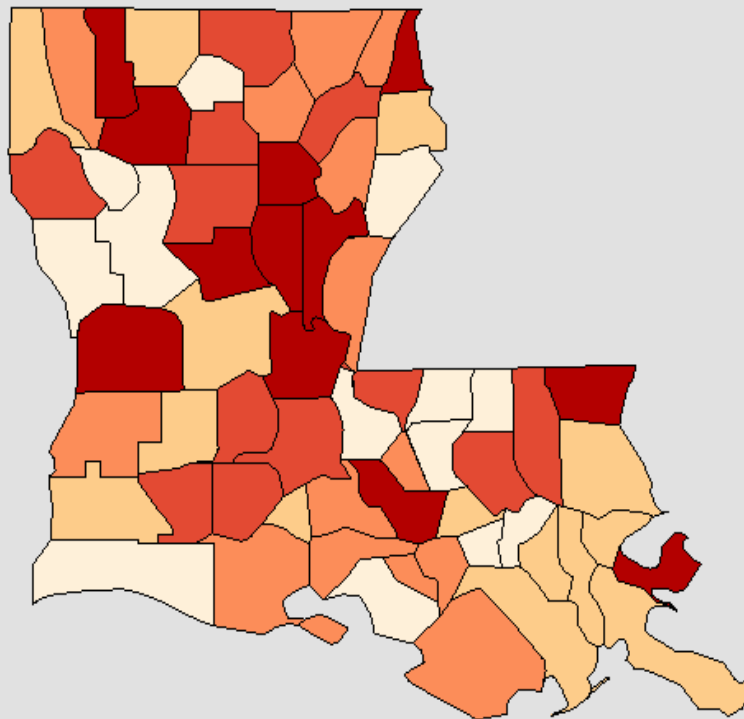


¹ Age-adjusted to the 2000 U.S. standard population.

² Incidence data source: 18 SEER registries.

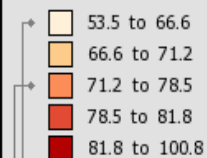
* Incidence rate of Louisiana is significantly different from that of the U.S.

**Incidence Rates[†] for Louisiana
Lung & Bronchus, 2009 - 2013
All Races (includes Hispanic), Both Sexes, All Ages**



Age-Adjusted
Annual Incidence Rate
(Cases per 100,000)

[Quantile Interval](#)



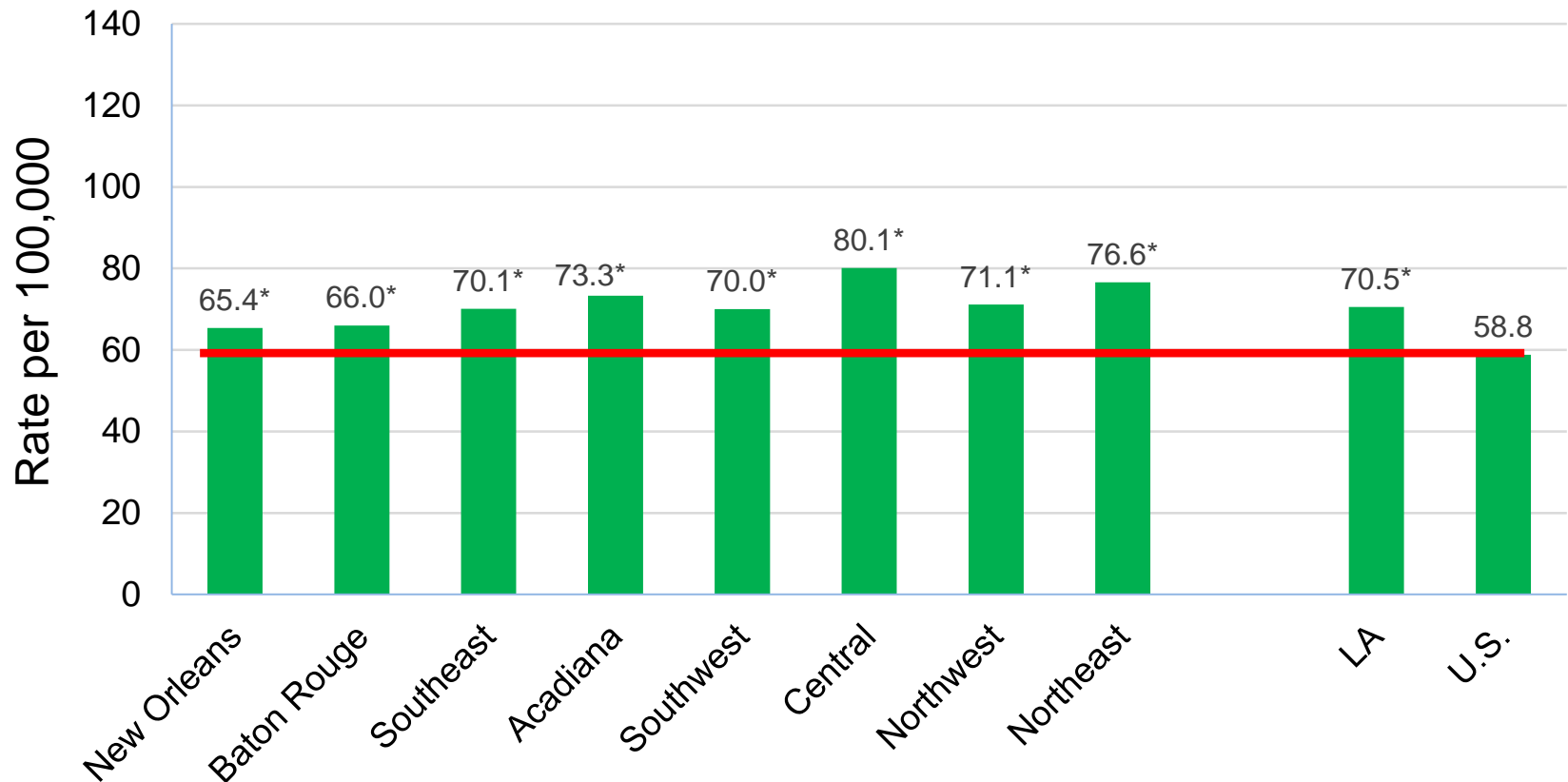
US (SEER + NPCR)
Rate (95% C.I.)
62.4 (62.3 - 62.6)

Louisiana
Rate (95% C.I.)
71.4 (70.3 - 72.5)

Notes:

Created by statecancerprofiles.cancer.gov on 10/06/2016 4:30 pm.

Lung & Bronchus Cancer Incidence^{1,2} by Louisiana Region: Whites, 2009-2013

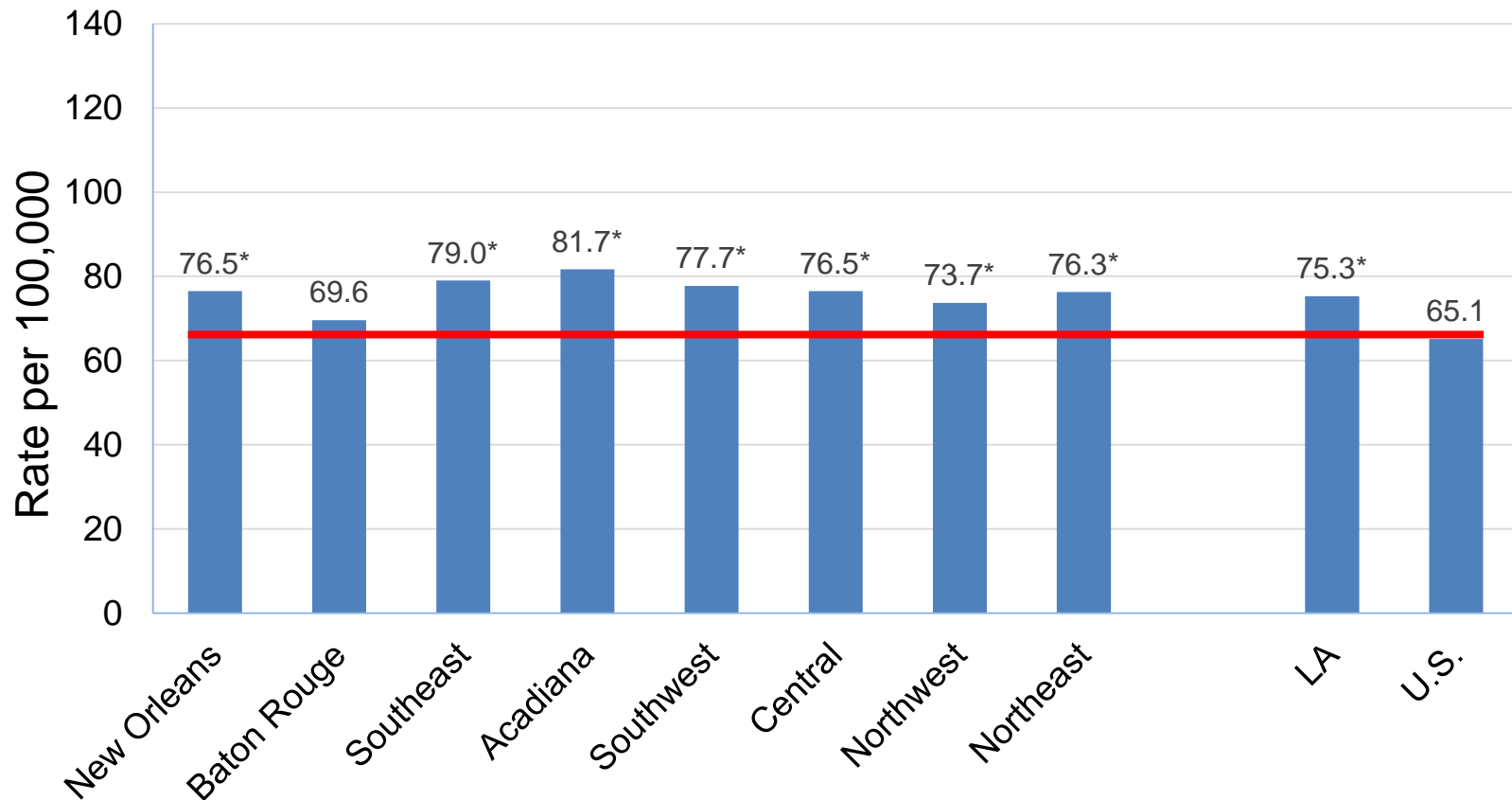


¹ Age-adjusted to the 2000 U.S. standard population.

² Data source for U.S. was the 18 SEER registries.

* Incidence rate of regions/Louisiana is significantly different from that of the U.S.

Lung & Bronchus Cancer Incidence¹ by Louisiana Region: Blacks, 2009-2013

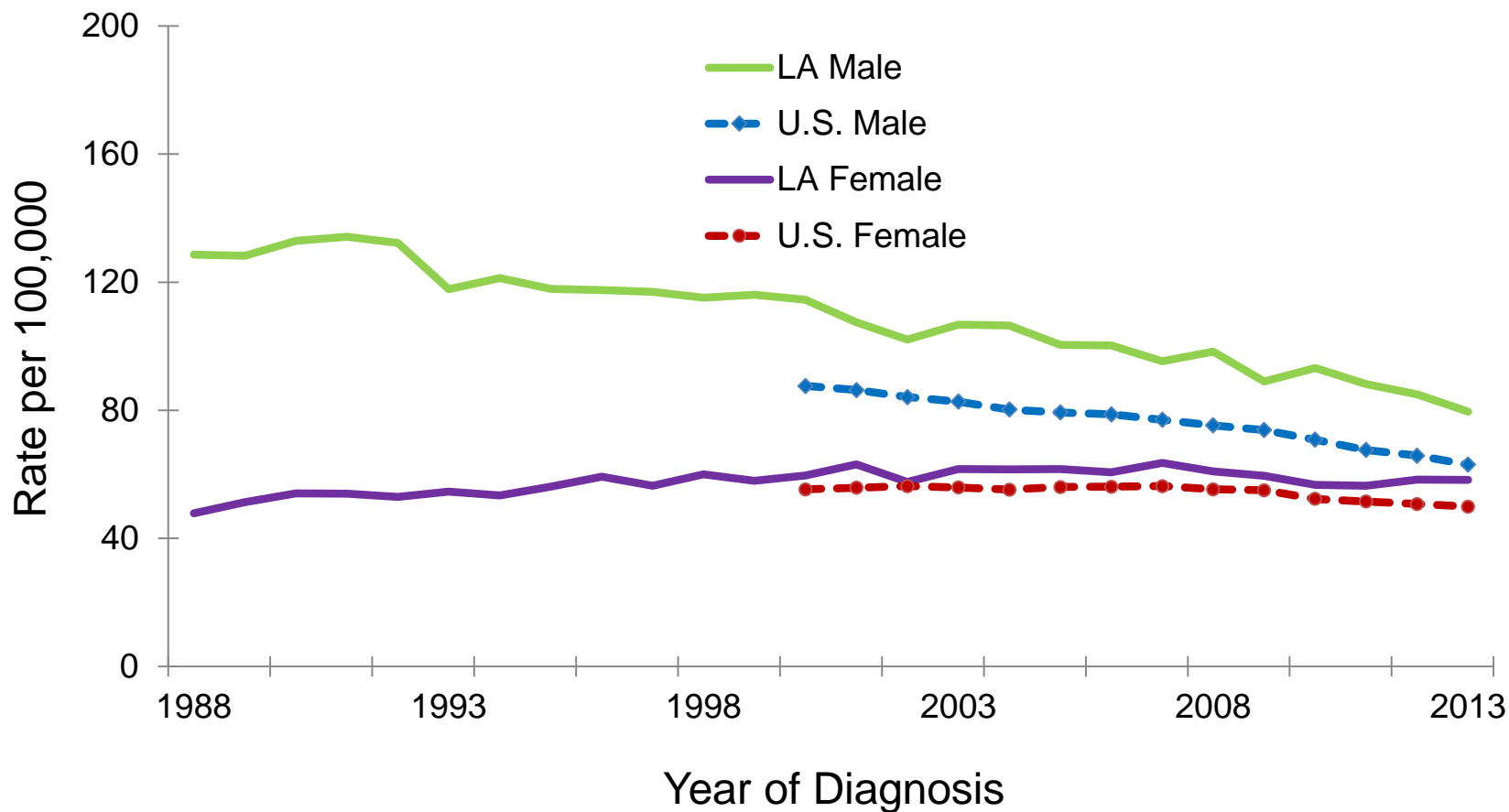


¹ Age-adjusted to the 2000 U.S. standard population.

² Data source for U.S. was the 18 SEER registries.

* Incidence rate of regions/Louisiana is significantly different from that of the U.S.

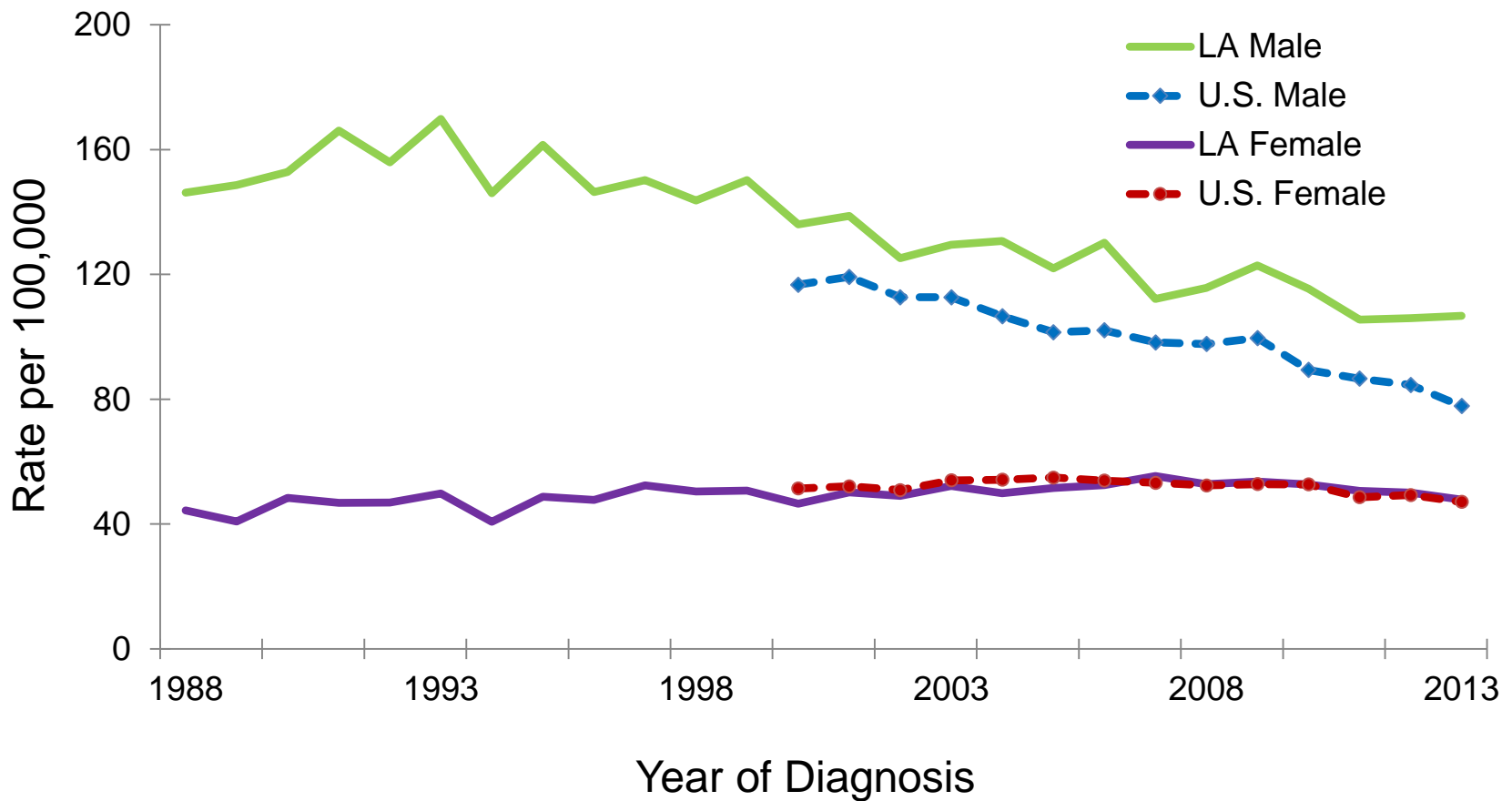
Lung & Bronchus Cancer: Trend of Incidence Rates^{1,2}, Whites 1988-2013



¹ Age-adjusted to the 2000 U.S. standard population.

² U.S. data source: 18 SEER registries.

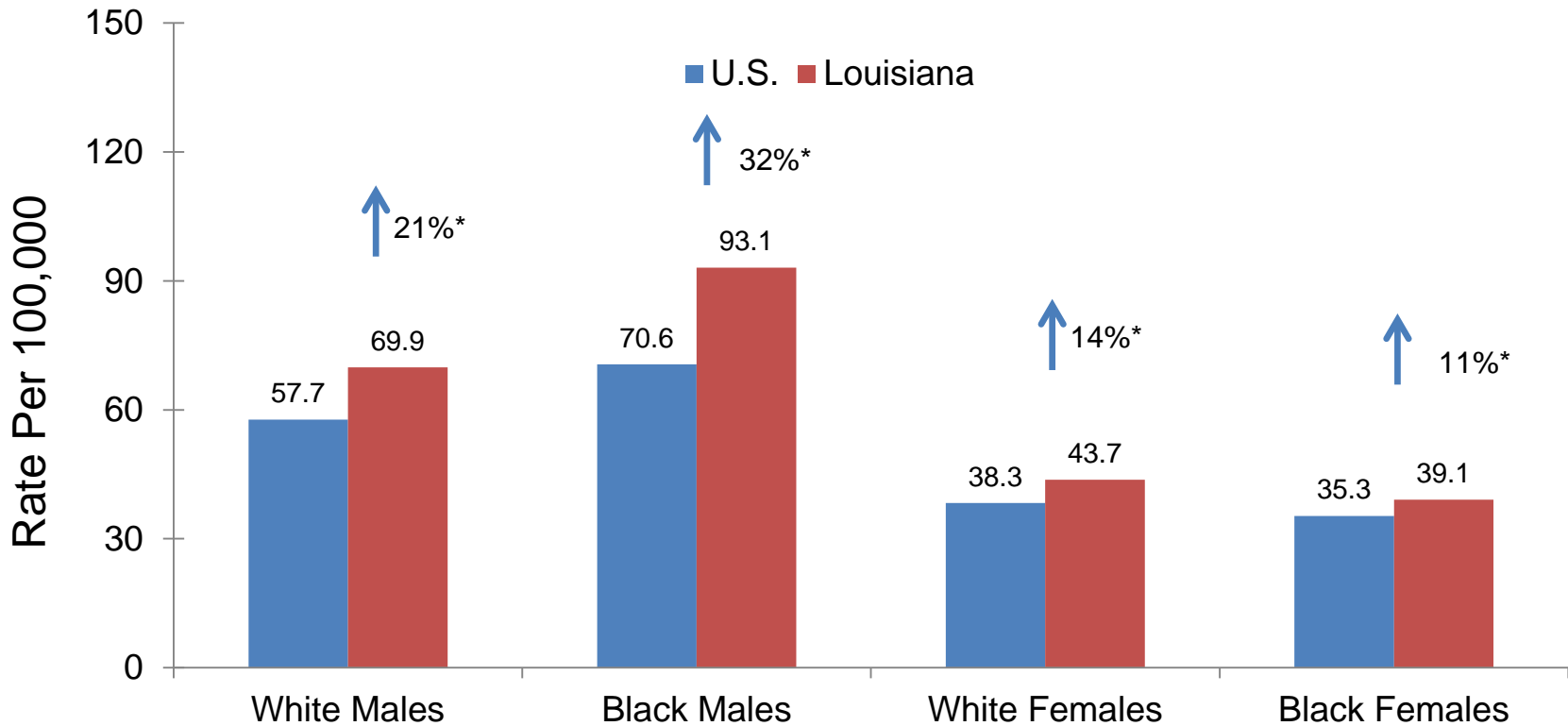
Lung & Bronchus Cancer: Trend of Incidence Rates^{1,2}, Blacks 1988-2013



¹ Age-adjusted to the 2000 U.S. standard population.

² U.S. data source: 18 SEER registries.

Lung & Bronchus Cancer: Mortality Rates¹, Louisiana vs. U.S.,² 2009-2013

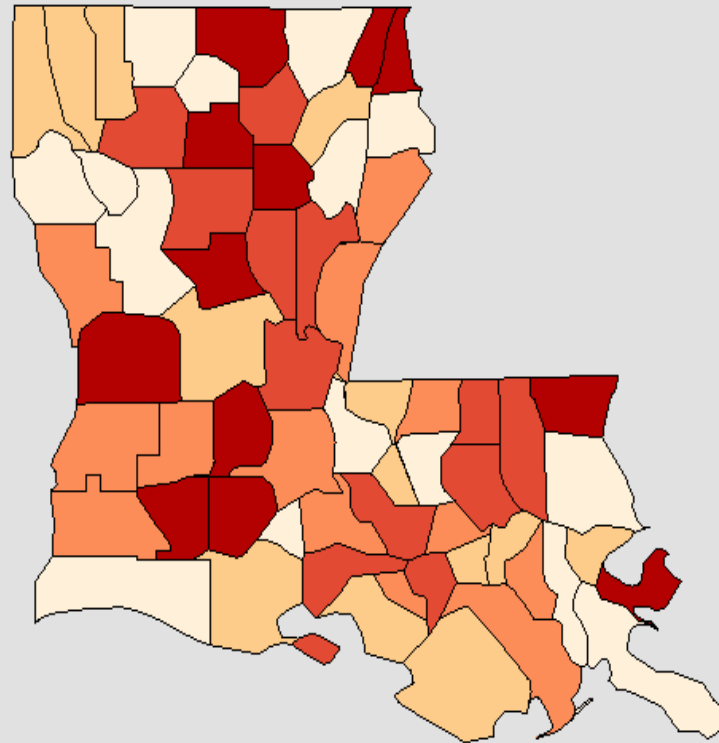


¹ Age-adjusted to the 2000 U.S. standard population.

² Mortality data source: National Center of Health Statistics (NCHS).

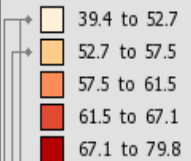
* Mortality rate of Louisiana is significantly different from that of the U.S.

**Death Rates for Louisiana
Lung & Bronchus, 2009 - 2013
All Races (includes Hispanic), Both Sexes, All Ages**



Age-Adjusted
Annual Death Rate
(Deaths per 100,000)

[Quantile Interval](#)



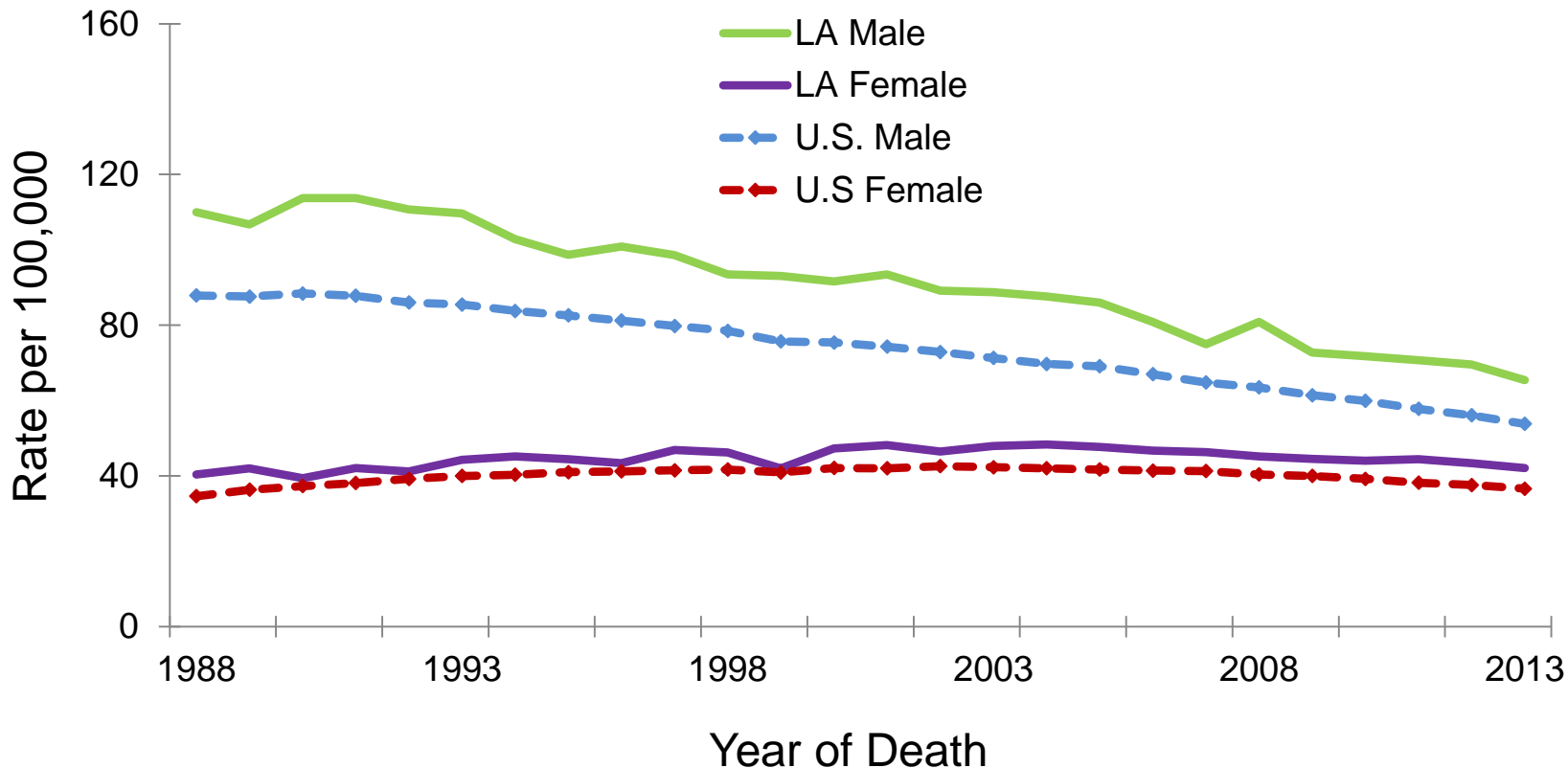
United States
Rate (95% C.I.)
46.0 (45.9 - 46.1)

Louisiana
Rate (95% C.I.)
56.4 (55.4 - 57.3)

Healthy People 2020
Goal C-2
45.5

Notes:
Created by statecancerprofiles.cancer.gov on 10/07/2016 3:22 pm.

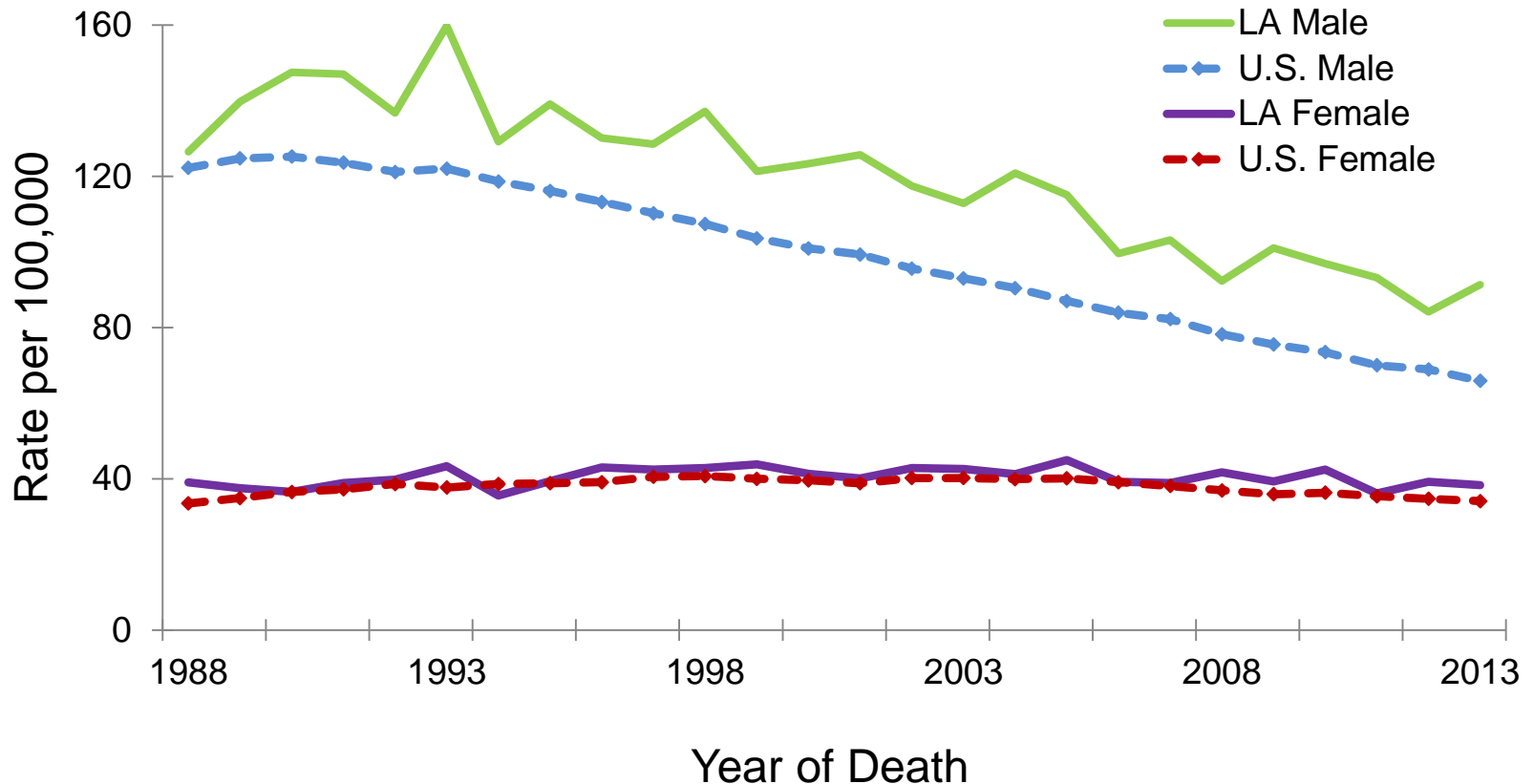
Lung & Bronchus Cancer: Trends of Mortality Rates^{1,2}, Whites, 1988-2013



¹ Age-adjusted to the 2000 U.S. standard population.

² Data source: National Center of Health Statistics (NCHS).

Lung & Bronchus Cancer: Trends of Mortality Rates^{1,2}, Blacks, 1988-2013

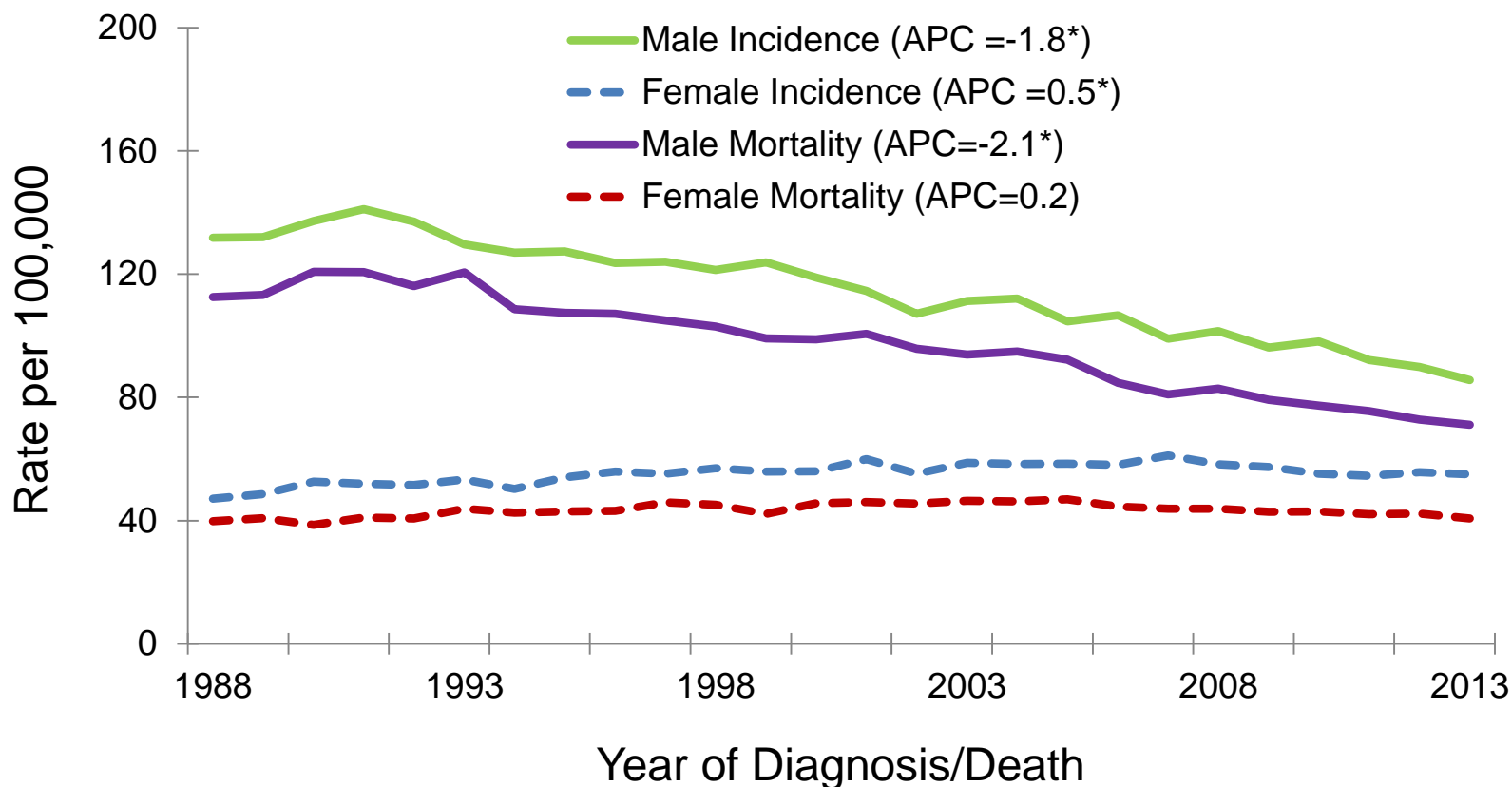


¹ Age-adjusted to the 2000 U.S. standard population.

² Data source: National Center of Health Statistics (NCHS).

Lung and Bronchus: Louisiana, 1988-2013

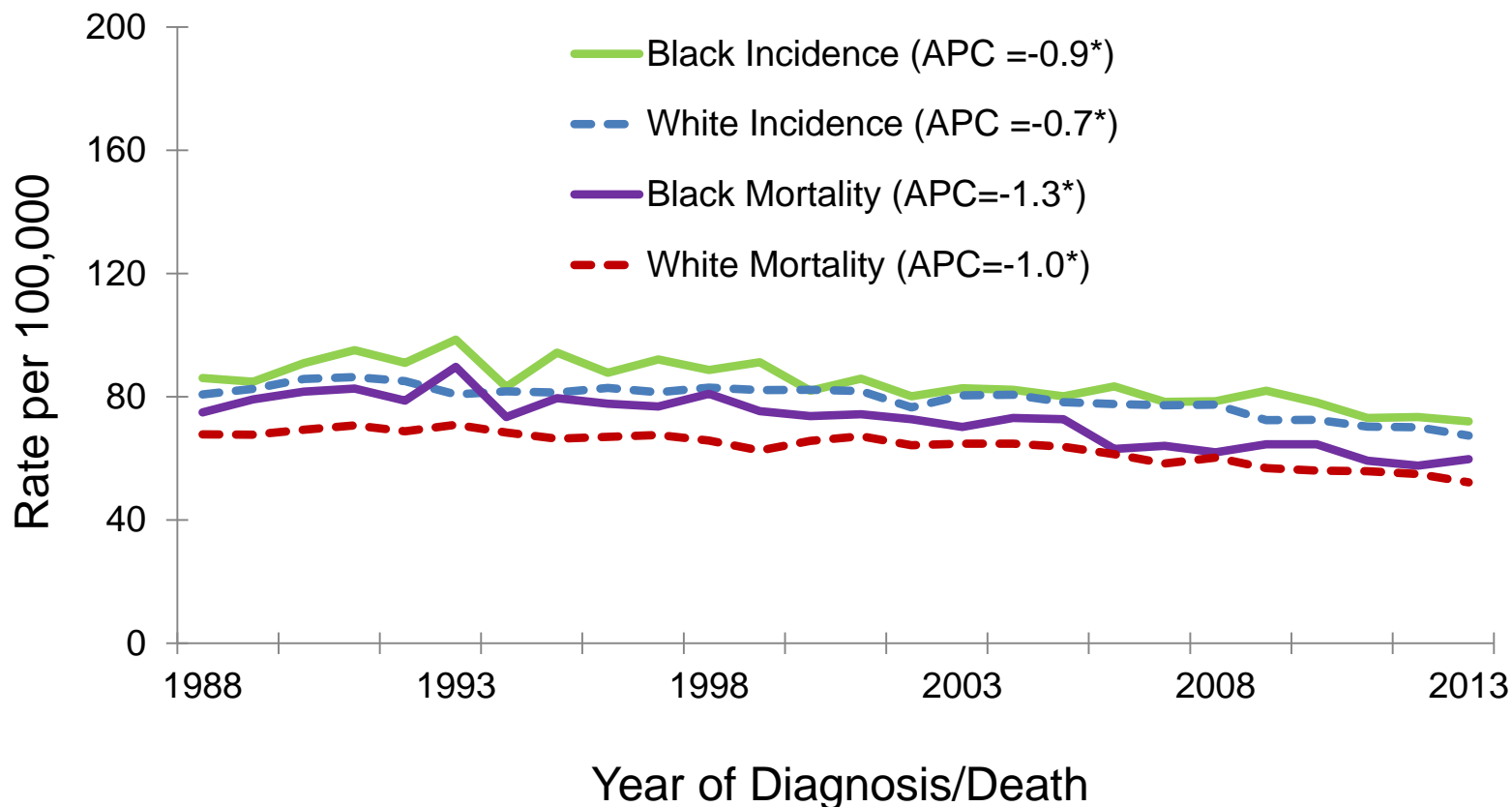
Trends of Incidence and Mortality Rates by Gender



*APCs were calculated using weighted least squares method

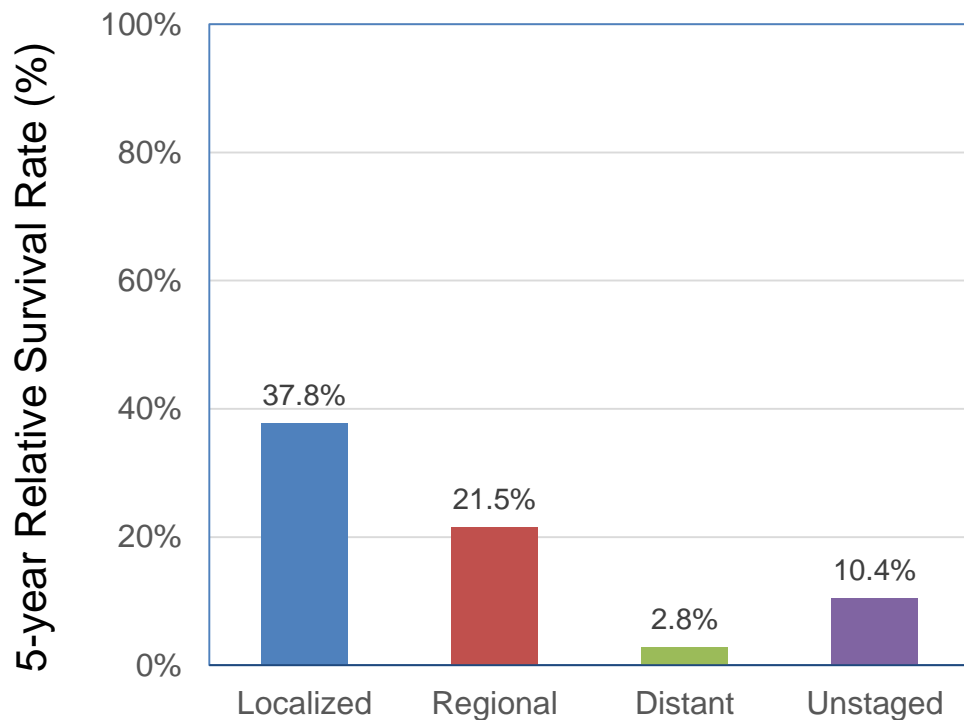
Lung and Bronchus: Louisiana, 1988-2013

Trends of Incidence and Mortality Rates by Race

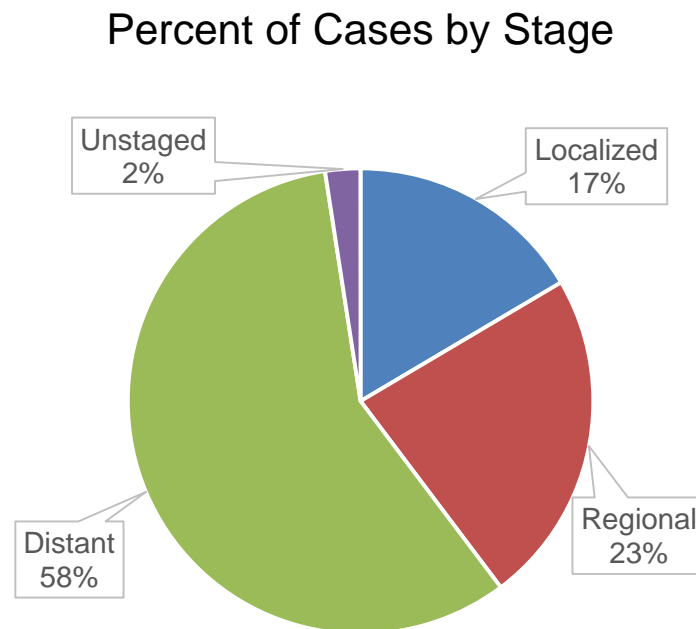


*APCs were calculated using weighted least squares method

Lung and Bronchus Cancer¹: Louisiana 5-Year Relative Survival by Stage², White Males, 2006-2012



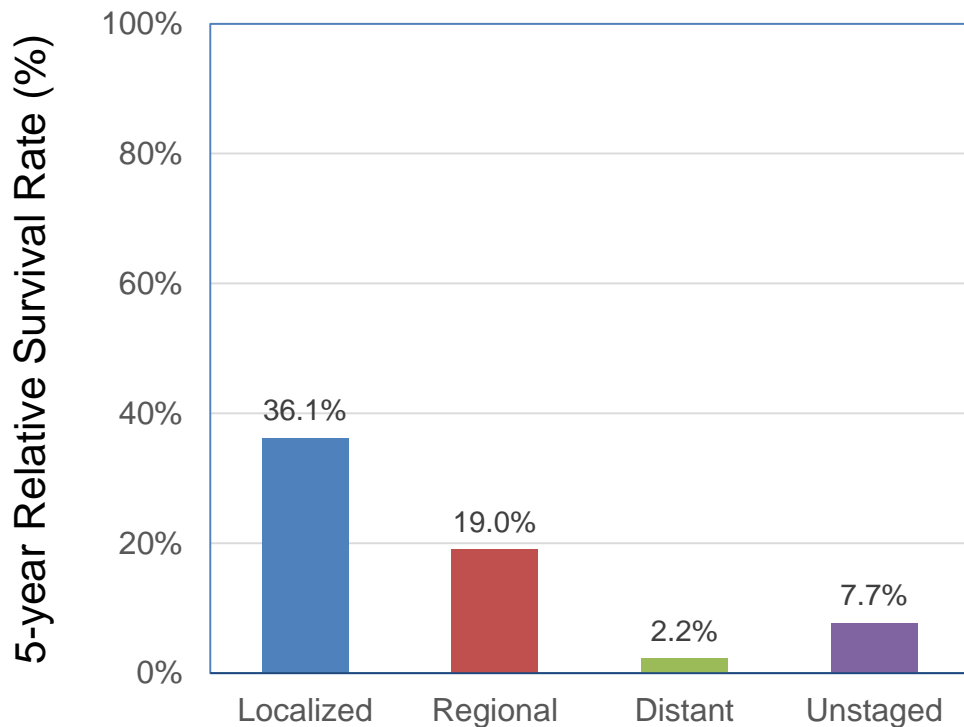
Stage Distribution (%) 2006-2012



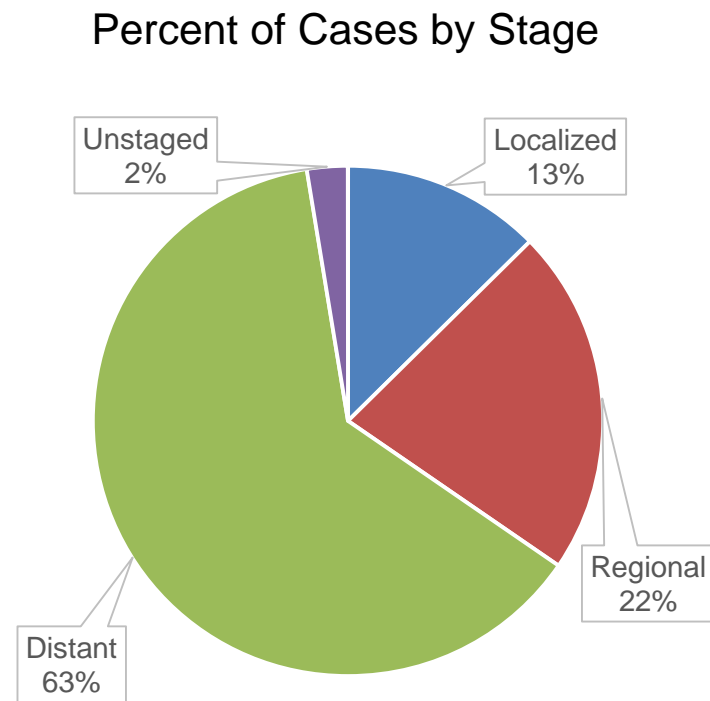
¹ Lung and Bronchus cancer includes first primary only (sequence number 0 or 1).

² The stage distribution is based on Summary Stage 2000.

Lung and Bronchus Cancer¹: Louisiana 5-Year Relative Survival by Stage², Black Males, 2006-2012



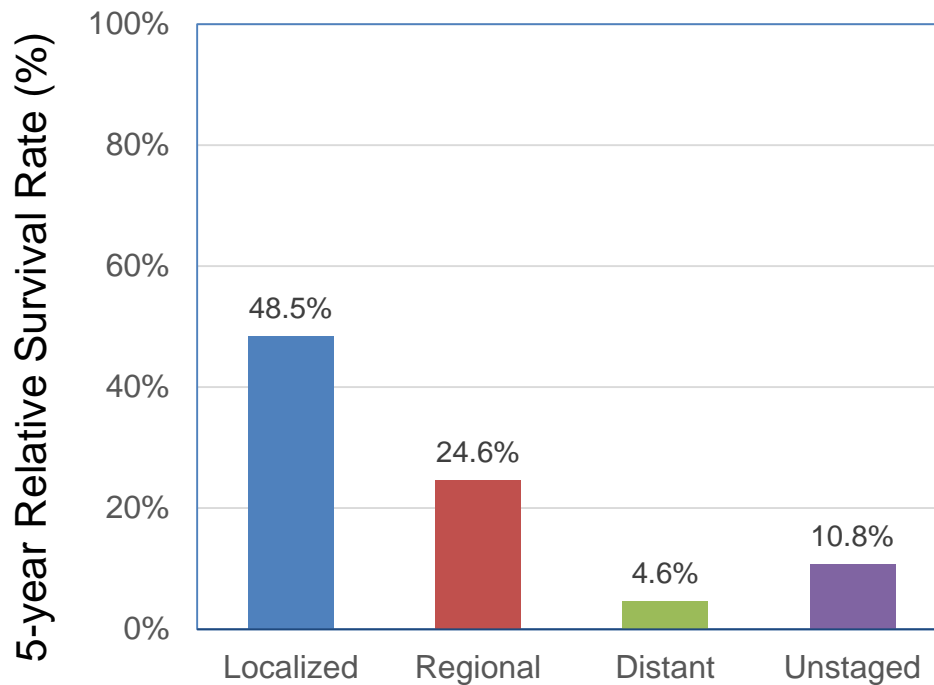
Stage Distribution (%) 2006-2012



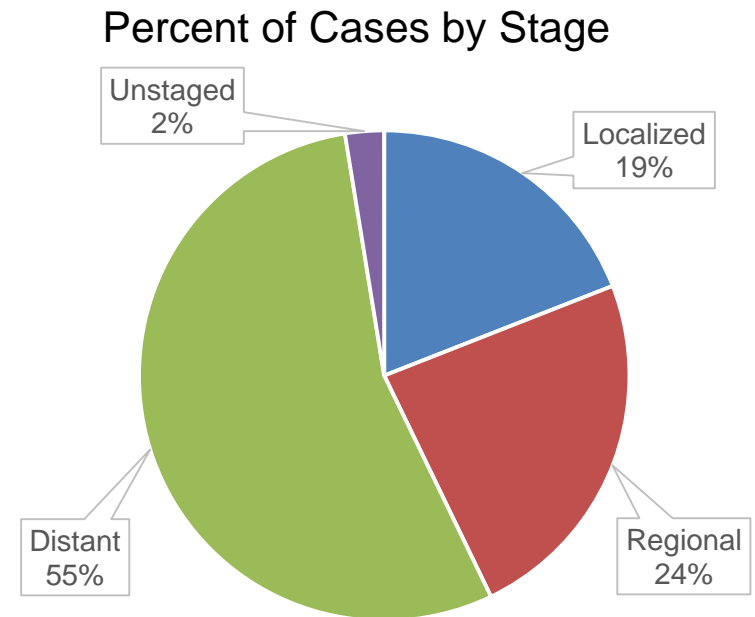
¹ Lung and Bronchus cancer includes first primary only (sequence number 0 or 1).

² The stage distribution is based on Summary Stage 2000.

Lung and Bronchus Cancer¹: Louisiana 5-Year Relative Survival by Stage², White Females, 2006-2012



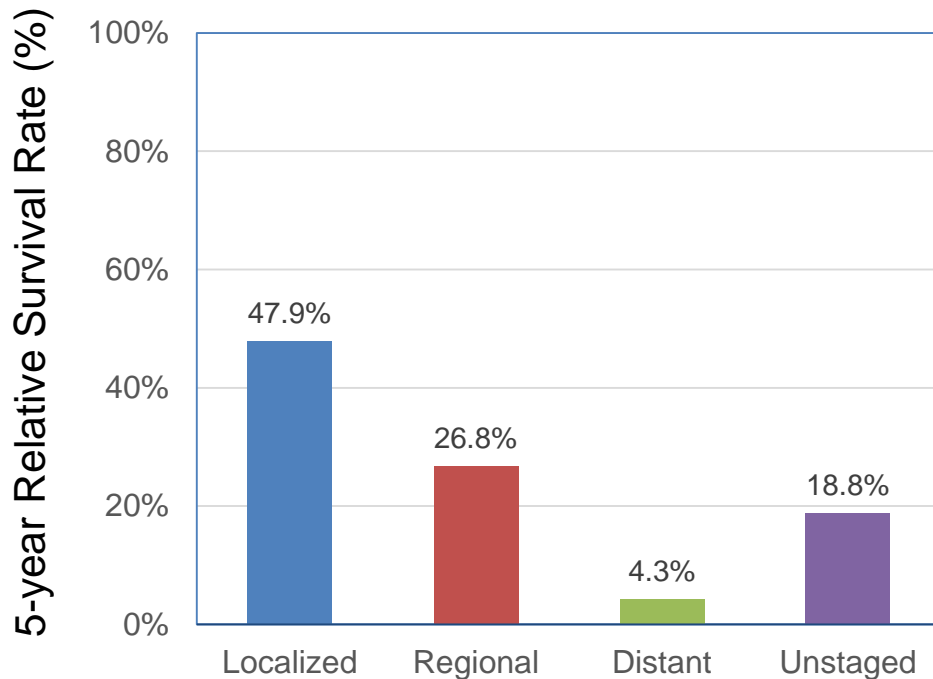
Stage Distribution (%) 2006-2012



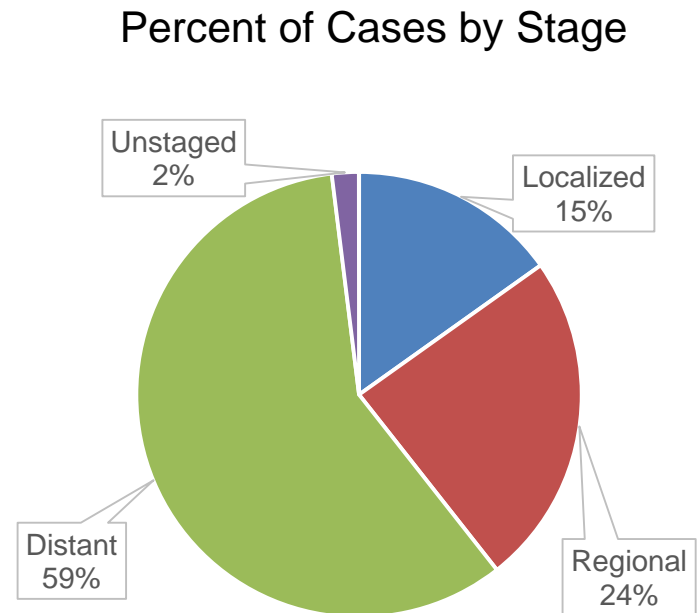
¹ Lung and Bronchus cancer includes first primary only (sequence number 0 or 1).

² The stage distribution is based on Summary Stage 2000.

Lung and Bronchus Cancer¹: Louisiana 5-Year Relative Survival by Stage², Black Females, 2006-2012



Stage Distribution (%) 2006-2012



¹ Lung and Bronchus cancer includes first primary only (sequence number 0 or 1).

² The stage distribution is based on Summary Stage 2000.

Data Sources

Surveillance, Epidemiology, and End Results (SEER) Program (www.seer.cancer.gov), SEER*Stat Databases, National Cancer Institute, DCCPS, Surveillance Research Program, Surveillance Systems Branch, released April 2016, based on the November 2015 submission.

For Incidence:

- Incidence - SEER 18 Regs Research Data + Hurricane Katrina Impacted Louisiana Cases, Nov 2015 Sub (2000-2013) <Katrina/Rita Population Adjustment>
- SEER*DMS - LTR 1988-2013, June 7, 2016

For Mortality:

- Mortality – all COD, aggregated with States, Total U.S. (1969-2013) <Katrina/Rita Population Adjustment>

For Survival:

- Incidence - SEER 18 Regs Research Data + Hurricane Katrina Impacted Louisiana Cases, Nov 2015 Sub (1973-2013 varying)

Acknowledgements

Hospital cancer registries (<http://louisianatumorregistry.lsuhs.edu/>)

Louisiana Cancer Registrars' Association (<http://www.lcra-usa.org/>)

Physicians and staff members in:

- Medical records offices
- Pathology laboratories
- Physician offices and clinics
- Hospice programs and nursing homes

Regional and central offices of the Louisiana Tumor Registry
(<http://louisianatumorregistry.lsuhs.edu/regionalregistries.html>)

School of Public Health, LSU Health Sciences Center–New Orleans

Louisiana Cancer and Lung Trust Fund Board

Coroners' offices

Sources of LTR Funding

- National Cancer Institute, SEER Program
- National Program of Cancer Registries, CDC
- Louisiana Health Care Services Division

Editors

Xiangrong Li, MD, MSPH

Meichin Hsieh, PhD, MSPH, CTR

Lauren Maniscalco, MPH

Xiaocheng Wu, MD, MPH, CTR

Contributors

Brent Mumphrey, BS

Tina Lefante, MPH

Lisa Pareti, BS, RHIT, CTR

Yong Yi, PhD, MS

Questions?

Contact:

LTR-info@lsuhsc.edu

or

504-568-5757