

Louisiana Cancer Facts & Figures, Liver and Intrahepatic Bile Duct Cancer, 2016

Louisiana Tumor Registry

March, 2017

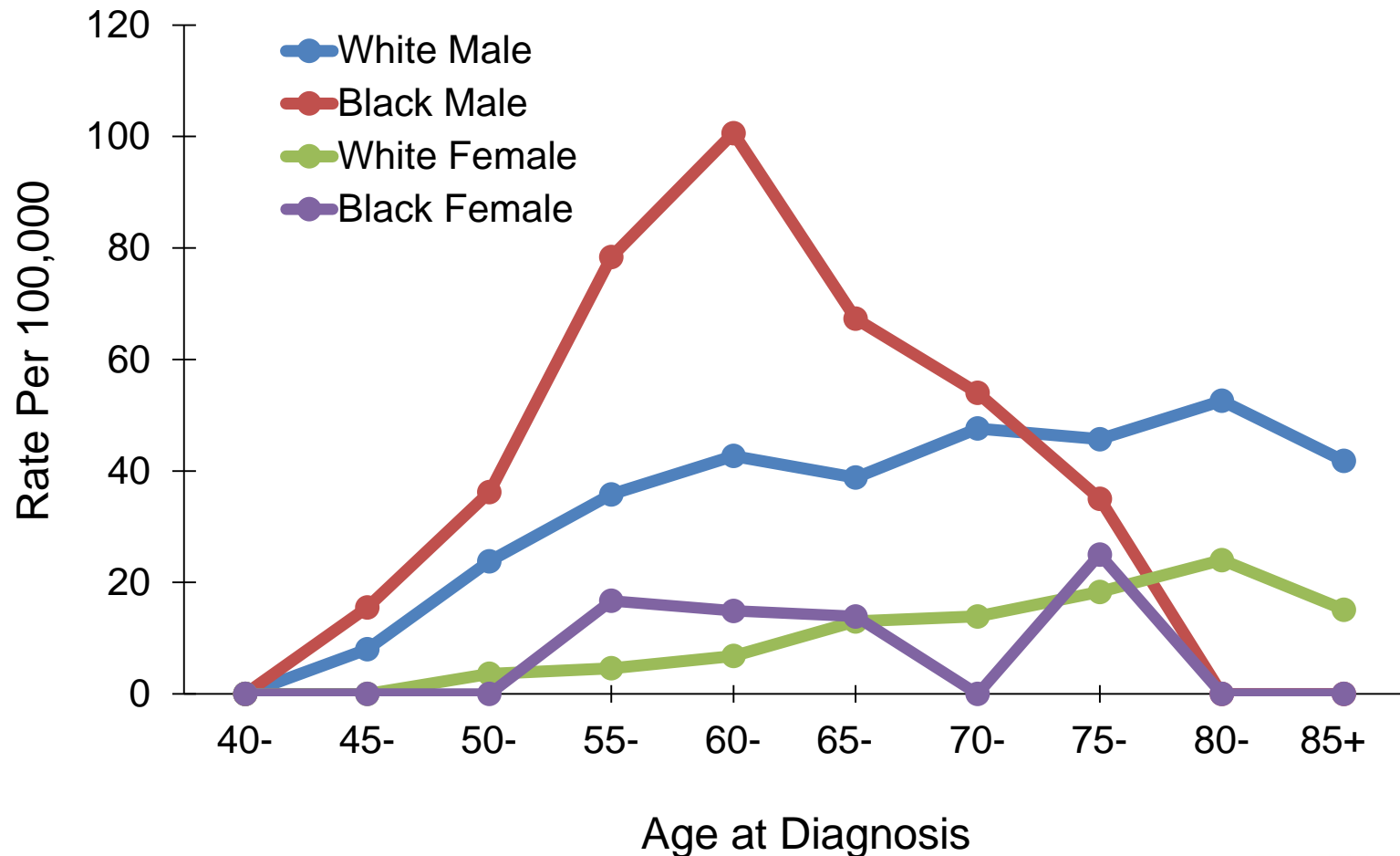
Liver and Intrahepatic Bile Duct Cancer

- Liver and intrahepatic bile duct cancer was the 4th most common cancer and the 2nd leading cause of cancer death in Louisiana from 2009 to 2013.¹
- Between 2009 and 2013, the average annual incidence rate of Liver and Intrahepatic Bile Duct Cancer was 8.2 per 100,000 population in Louisiana and 7.6 per 100,000 population in the U.S.²
- Between 2009 and 2013, the average annual mortality rate of Liver and Intrahepatic Bile Duct Cancer was 7.9 per 100,000 population in Louisiana and 6.1 per 100,000 population in the U.S.²

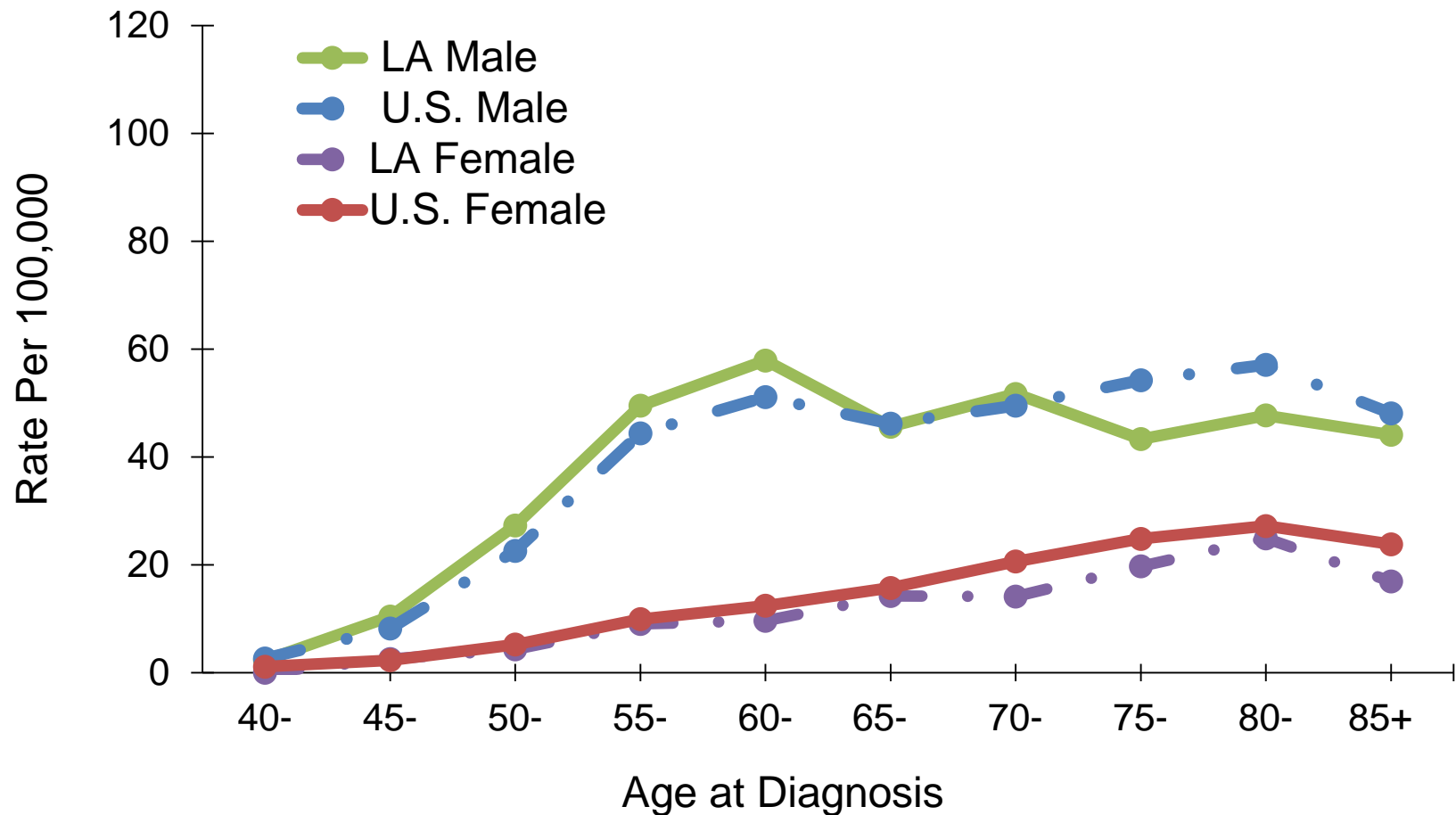
1. Data source: NCI state cancer profile.

2. Data source: National Cancer Institute, State Cancer Profiles.

Liver and Intrahepatic Bile Duct Cancer: Age-Specific Incidence Rates, Louisiana, 2009-2013

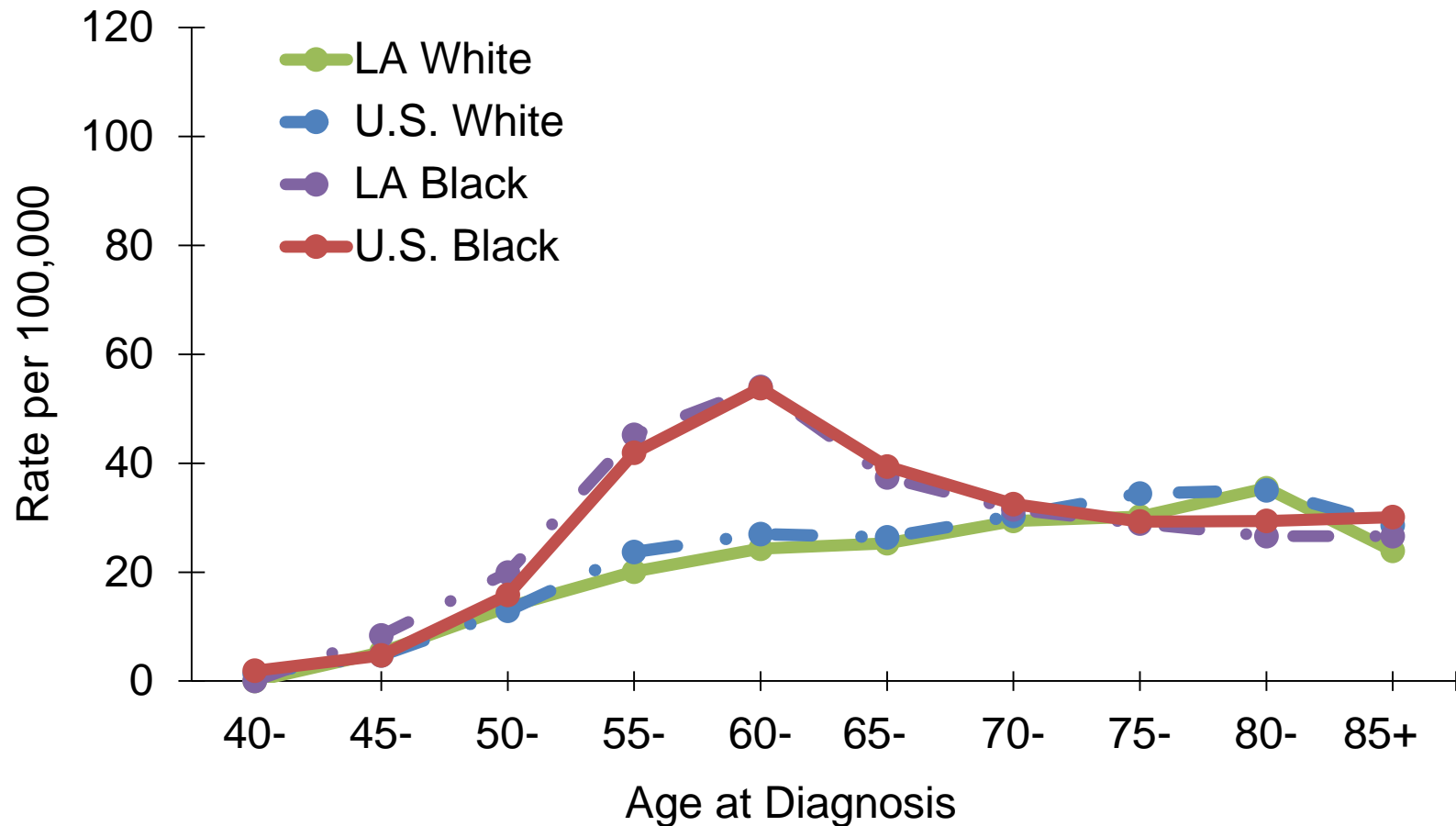


Liver and Intrahepatic Bile Duct Cancer: Age-Specific Incidence Rates by Gender, 2009-2013



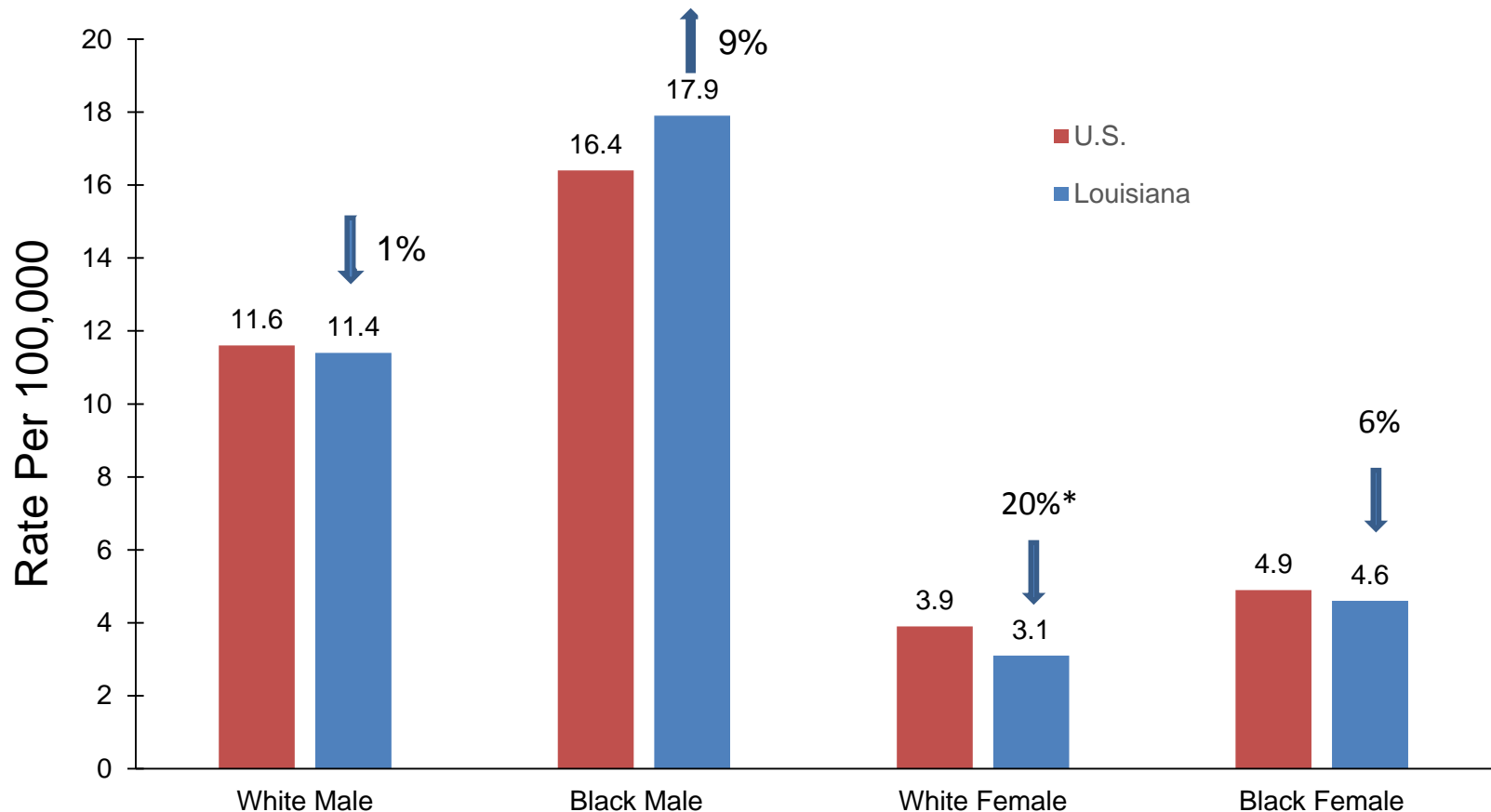
U.S. data source: 18 SEER registries.

Liver and Intrahepatic Bile Duct Cancer: Age-Specific Incidence Rates by Race, 2009-2013



U.S. data source: 18 SEER registries.

Liver and Intrahepatic Bile Duct Cancer: Incidence Rates^{1,2}, 2009-2013

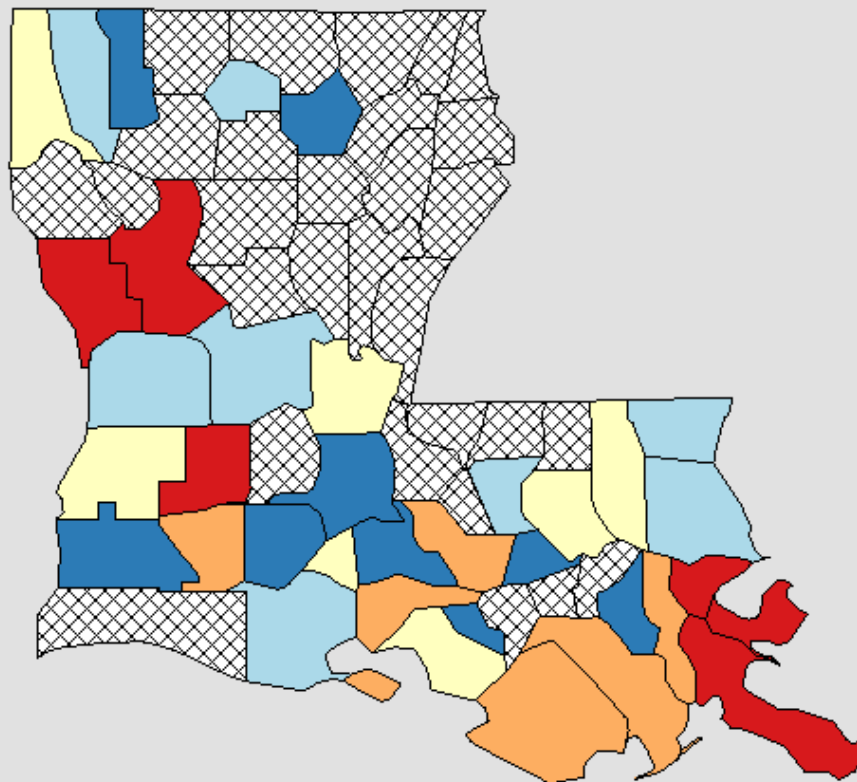


¹ Age-adjusted to the 2000 U.S. standard population.

² U.S. Incidence data source: 18 SEER registries.

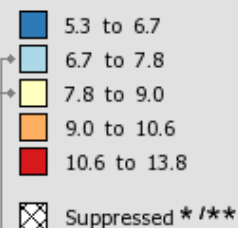
* Incidence rate of Louisiana is significantly different from that of the U.S.

Incidence Rates[†] for Louisiana
Liver & Bile Duct, 2009 - 2013
All Races (includes Hispanic), Both Sexes, All Ages



Age-Adjusted
Annual Incidence Rate
(Cases per 100,000)

[Quantile Interval](#)



US (SEER + NPCR)
Rate (95% C.I.)
7.6 (7.6 - 7.6)

Louisiana
Rate (95% C.I.)
8.2 (7.9 - 8.6)

Notes:

Created by statecancerprofiles.cancer.gov on 03/31/2017 2:14 pm.

[State Cancer Registries](#) may provide more current or more local data.

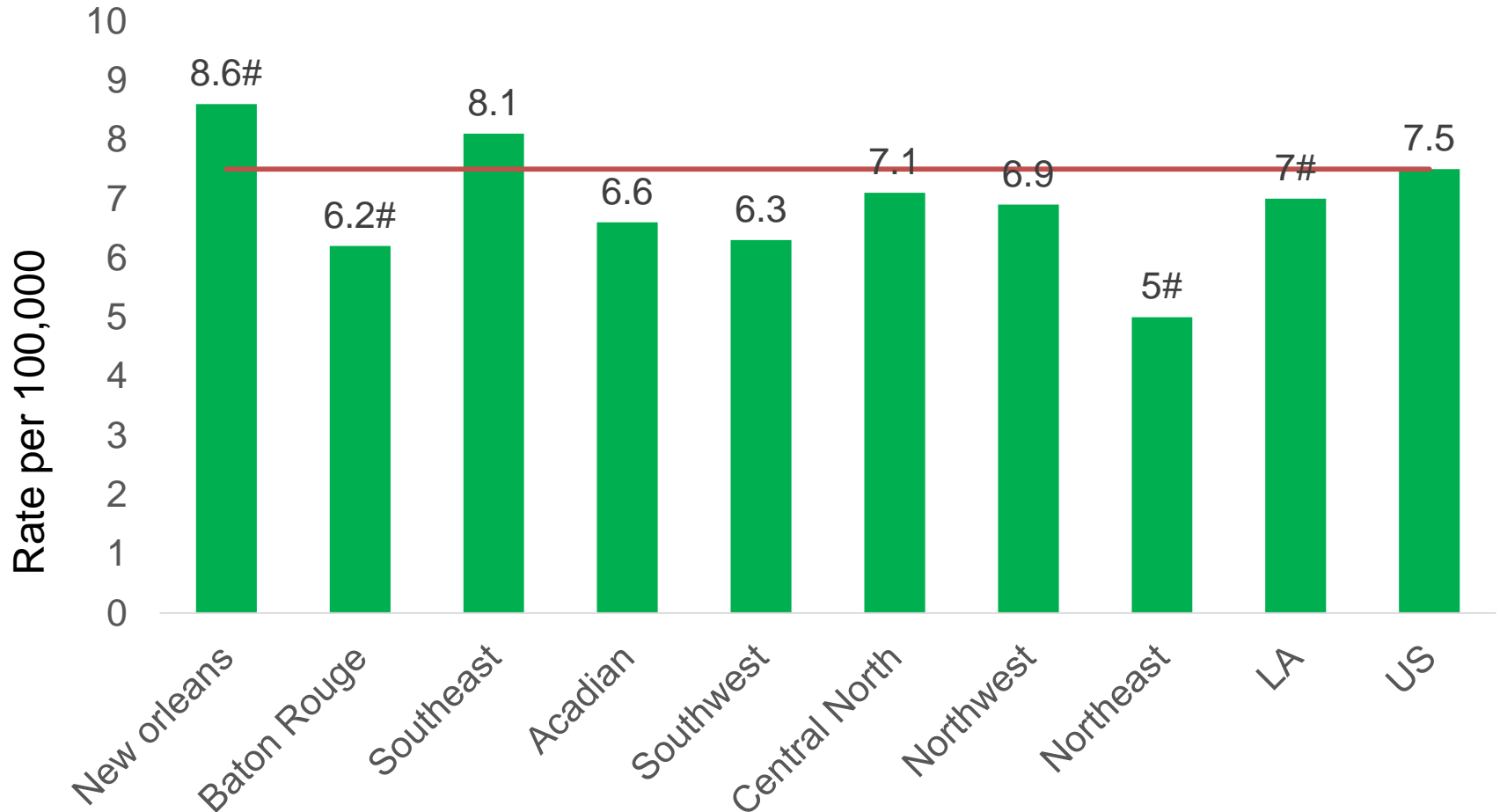
Data presented on the State Cancer Profiles Web Site may differ from statistics reported by the State Cancer Registries ([for more information](#)).

[†] Incidence rates (cases per 100,000 population per year) are age-adjusted to the [2000 US standard population](#) (19 age groups: <1, 1-4, 5-9, ... , 80-84, 85+). Rates are for invasive cancer only (except for bladder which is invasive and in situ) or unless otherwise specified. Rates calculated using SEER*Stat. Population counts for denominators are based on Census populations as modified by NCI. The [1969-2014 US Population Data](#) File is used for SEER and NPCR incidence rates.

* Data have been [suppressed](#) to ensure confidentiality and stability of rate estimates. Data is currently being suppressed if there are fewer than 16 counts for the time period.

** Data have been [suppressed](#) for states with a population below 50,000 per sex combination for American Indian/Alaska Native or Asian/Pacific Islanders because of concerns regarding the relatively small size of these populations in some states.

Liver and Intrahepatic Bile Duct Cancer Incidence Rates^{1,2} by Region: Louisiana, Whites, 2009-2013

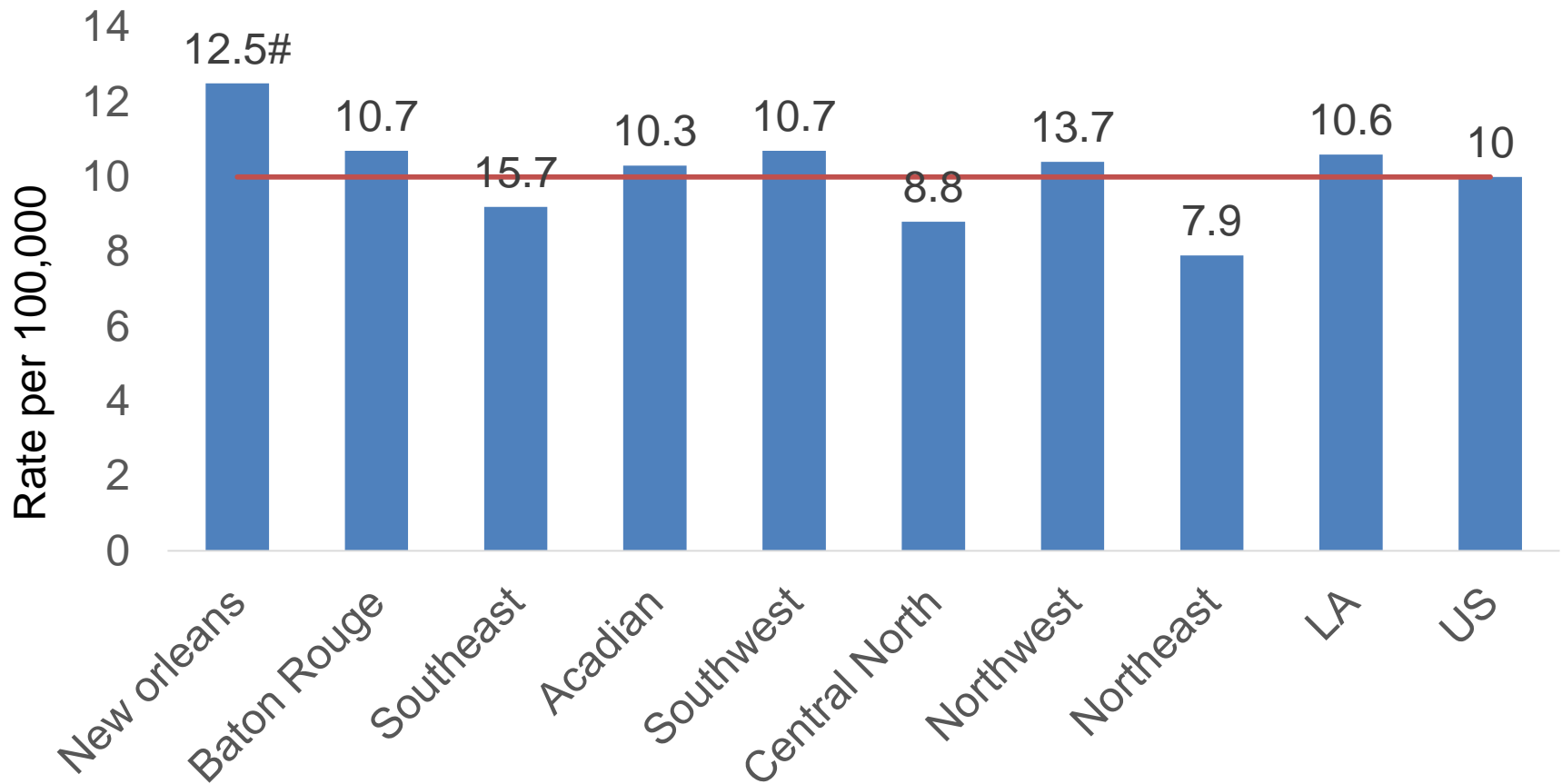


¹ Age-adjusted to the 2000 U.S. standard population.

² Data source for the U.S. was the 18 SEER registries.

* Incidence rate of regions/Louisiana is significantly different from that of the U.S.

Liver and Intrahepatic Bile Duct Cancer Incidence^{1,2} by Region: Louisiana, Blacks, 2009-2013

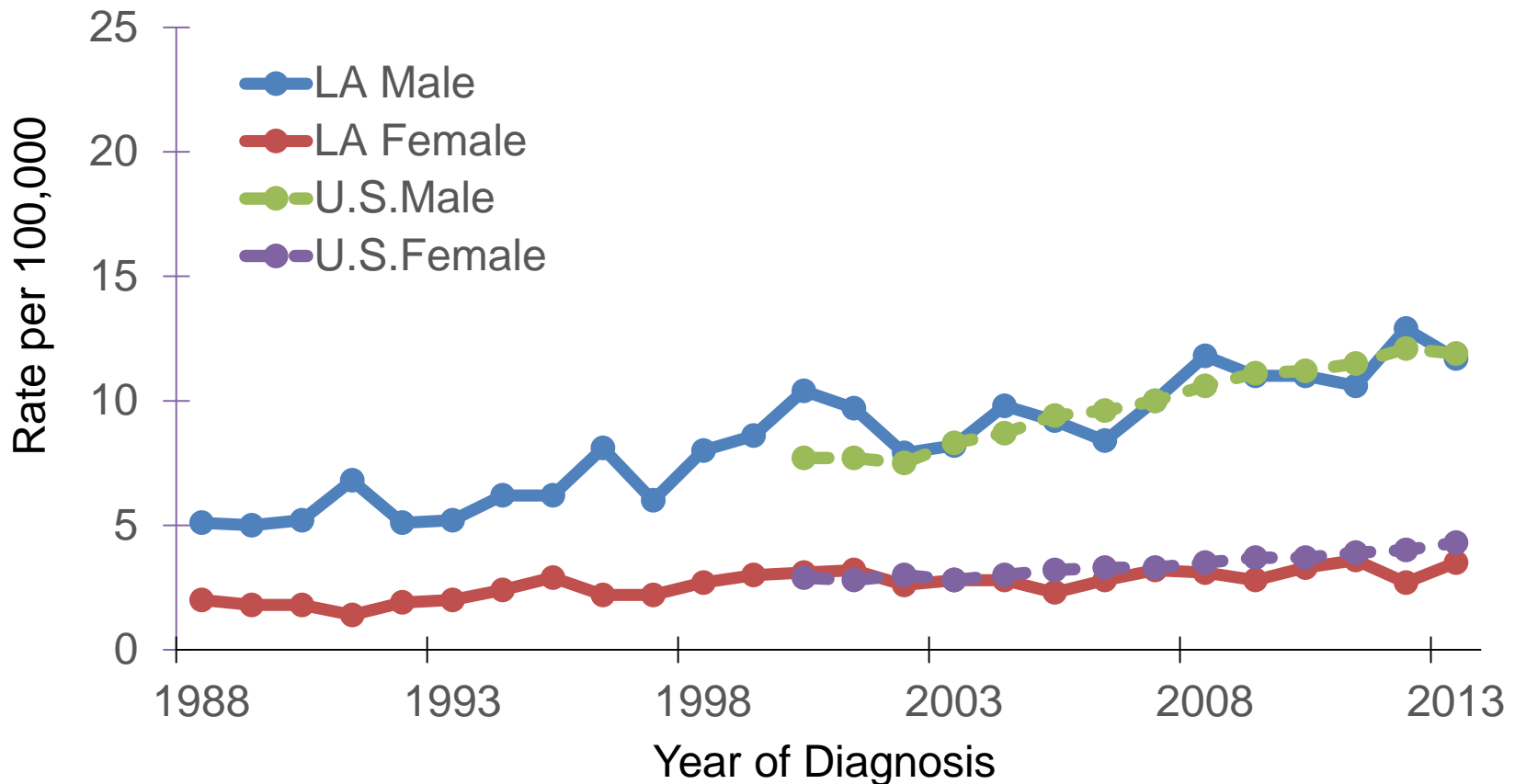


¹ Age-adjusted to the 2000 U.S. standard population.

² Data source for the U.S. was the 18 SEER registries.

* Incidence rate of regions/Louisiana is significantly different from that of the U.S.

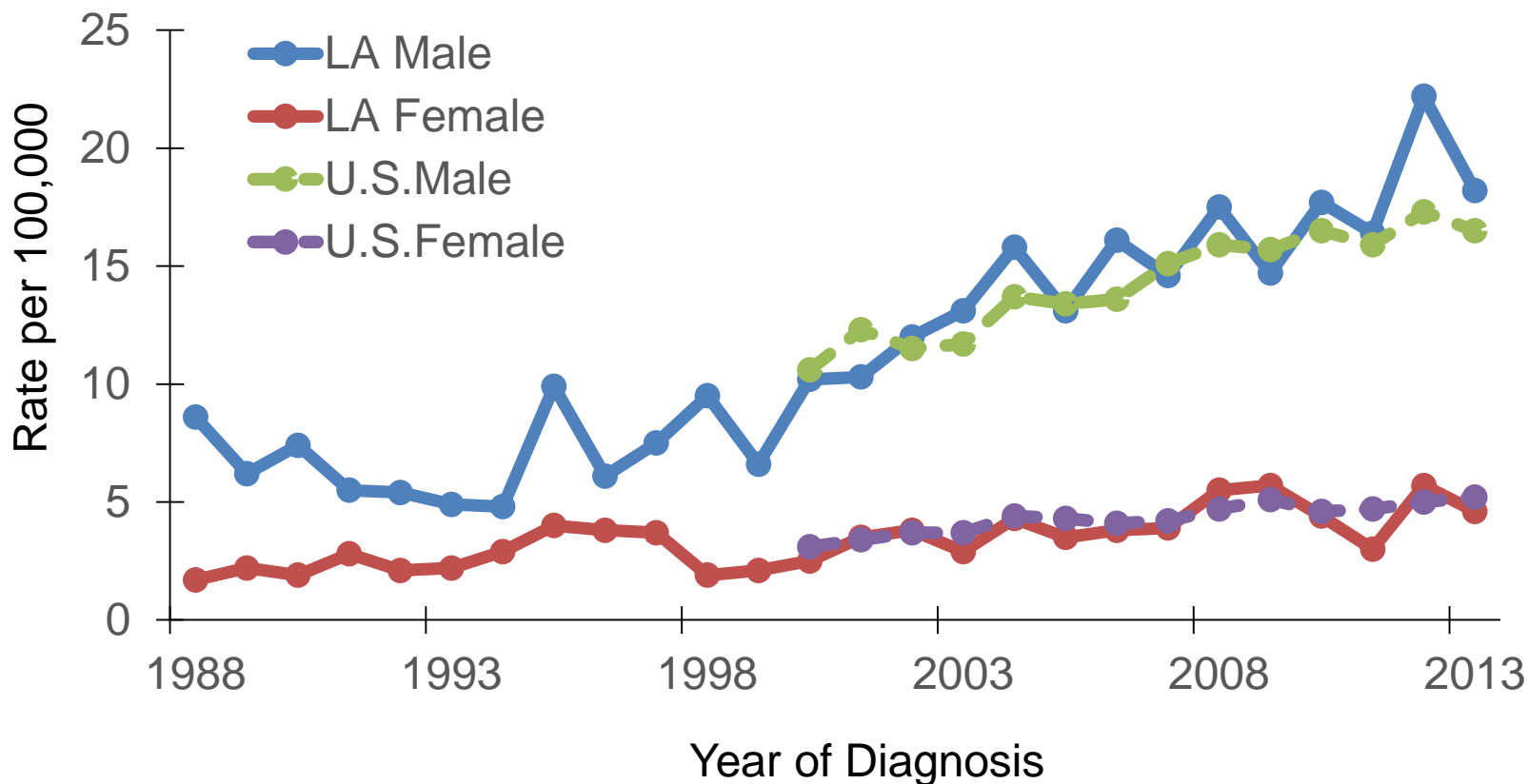
Liver and Intrahepatic Bile Duct Cancer: Trends of Incidence Rates^{1,2}, Whites, 1988-2013



¹ Age-adjusted to the 2000 U.S. standard population.

² U.S. data source: 18 SEER registries.

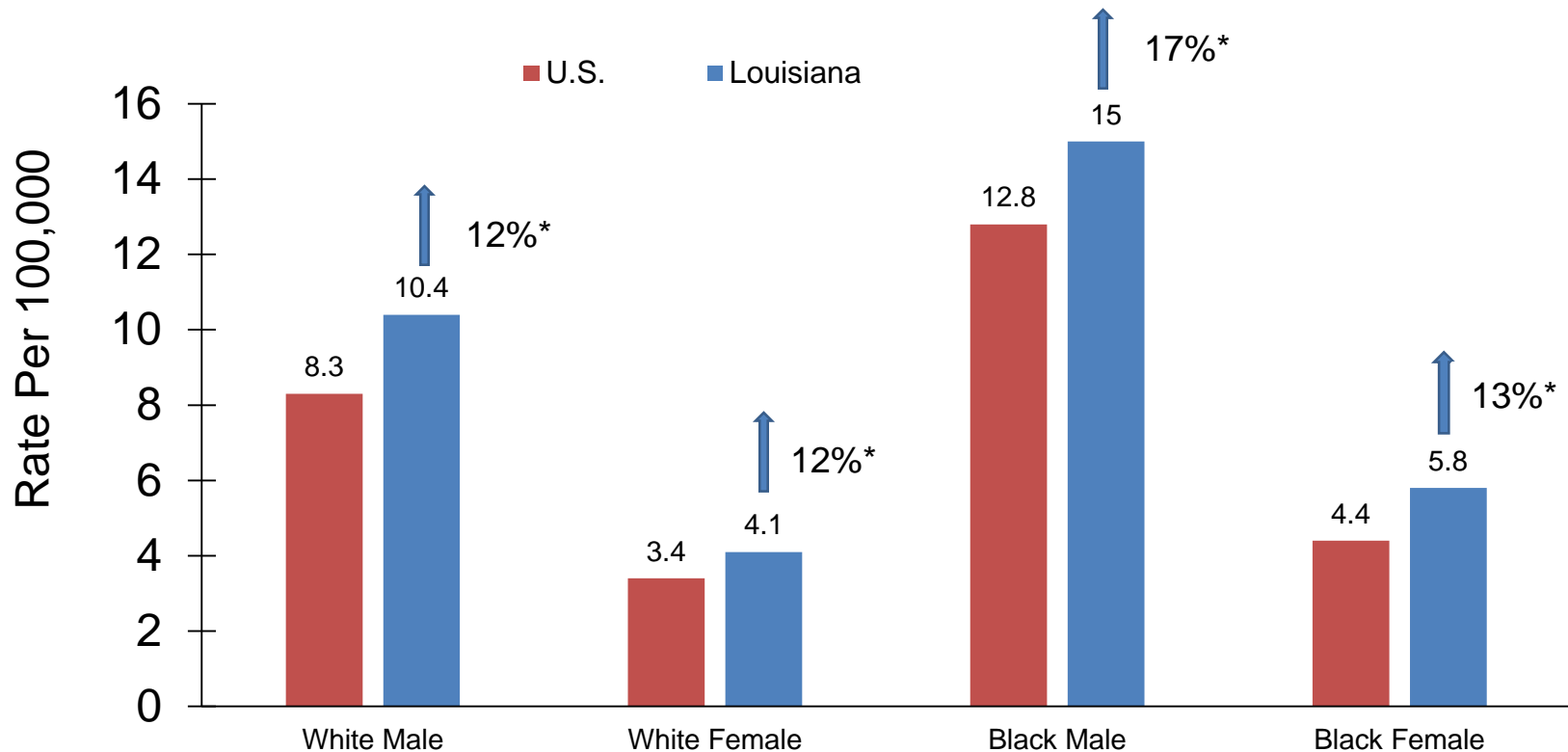
Liver and Intrahepatic Bile Duct Cancer: Trend of Incidence Rates^{1,2}, Blacks 1988-2013



¹ Age-adjusted to the 2000 U.S. standard population.

² U.S. data source: 18 SEER registries.

Liver and Intrahepatic Bile Duct Cancer: Mortality Rates¹ Louisiana vs. U.S.,² 2009-2013



¹ Age-adjusted to the 2000 U.S. standard population.

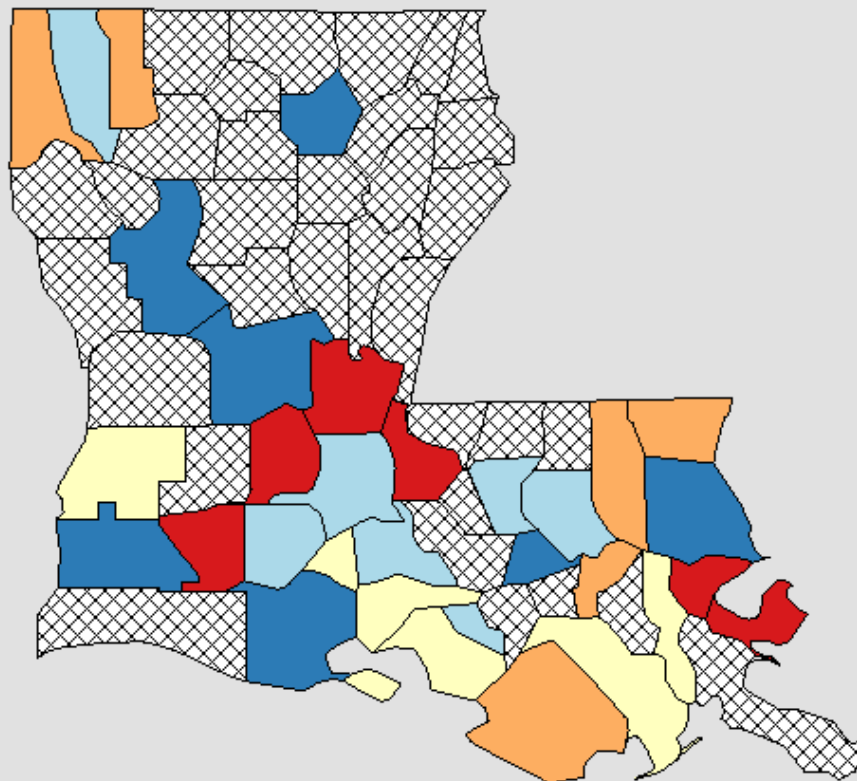
² Mortality data source was the National Center of Health Statistics (NCHS).

* Mortality rate of Louisiana is significantly different from that of the U.S.

Death Rates for Louisiana

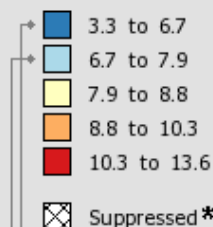
Liver & Bile Duct, 2009 - 2013

All Races (includes Hispanic), Both Sexes, All Ages



Age-Adjusted
Annual Death Rate
(Deaths per 100,000)

[Quantile Interval](#)



United States Rate (95% C.I.) 6.1 (6.1 - 6.2)

Louisiana Rate (95% C.I.) 7.9 (7.5 - 8.2)

Notes:

Created by statecancerprofiles.cancer.gov on 03/31/2017 2:18 pm.

[State Cancer Registries](#) may provide more current or more local data.

Data presented on the State Cancer Profiles Web Site may differ from statistics reported by the State Cancer Registries ([for more information](#)).

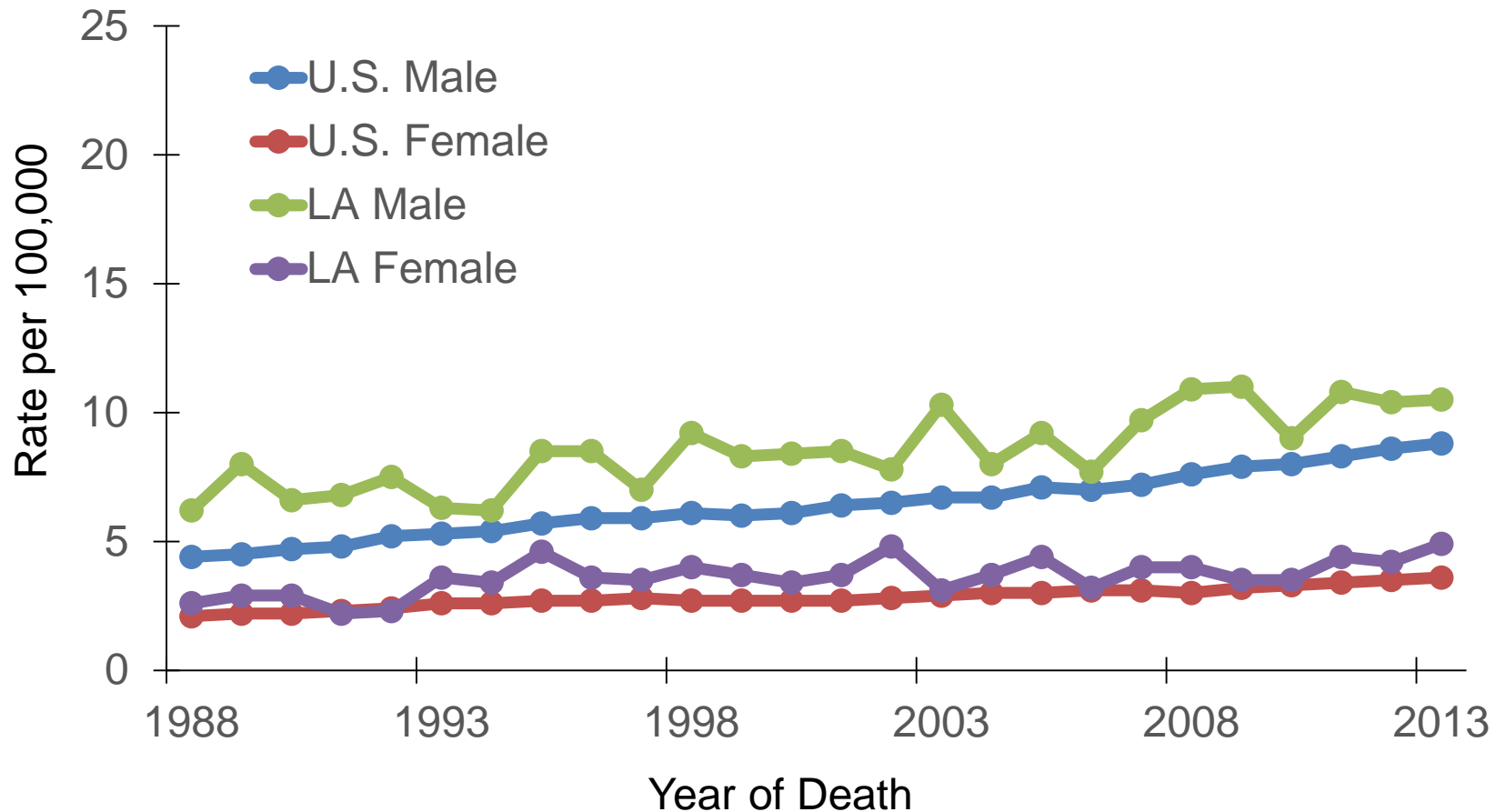
Source: Death data provided by the [National Vital Statistics System](#) public use data file. Death rates calculated by the National Cancer Institute using [SEER*Stat](#). Death rates (deaths per 100,000 population per year) are age-adjusted to the [2000 US standard population](#) (19 age groups: <1, 1-4, 5-9, ..., 80-84, 85+). The Healthy People 2020 goals are based on rates adjusted using different methods but the differences should be minimal.

Population counts for denominators are based on the Census [1969-2014 US Population Data](#) File as modified by NCI.

* Data have been [suppressed](#) to ensure confidentiality and stability of rate estimates. Data is currently being suppressed if there are fewer than 16 counts for the time period.

** Data have been [suppressed](#) for states with a population below 50,000 per sex combination for American Indian/Alaska Native or Asian/Pacific Islanders because of concerns regarding the relatively small size of these populations in some states.

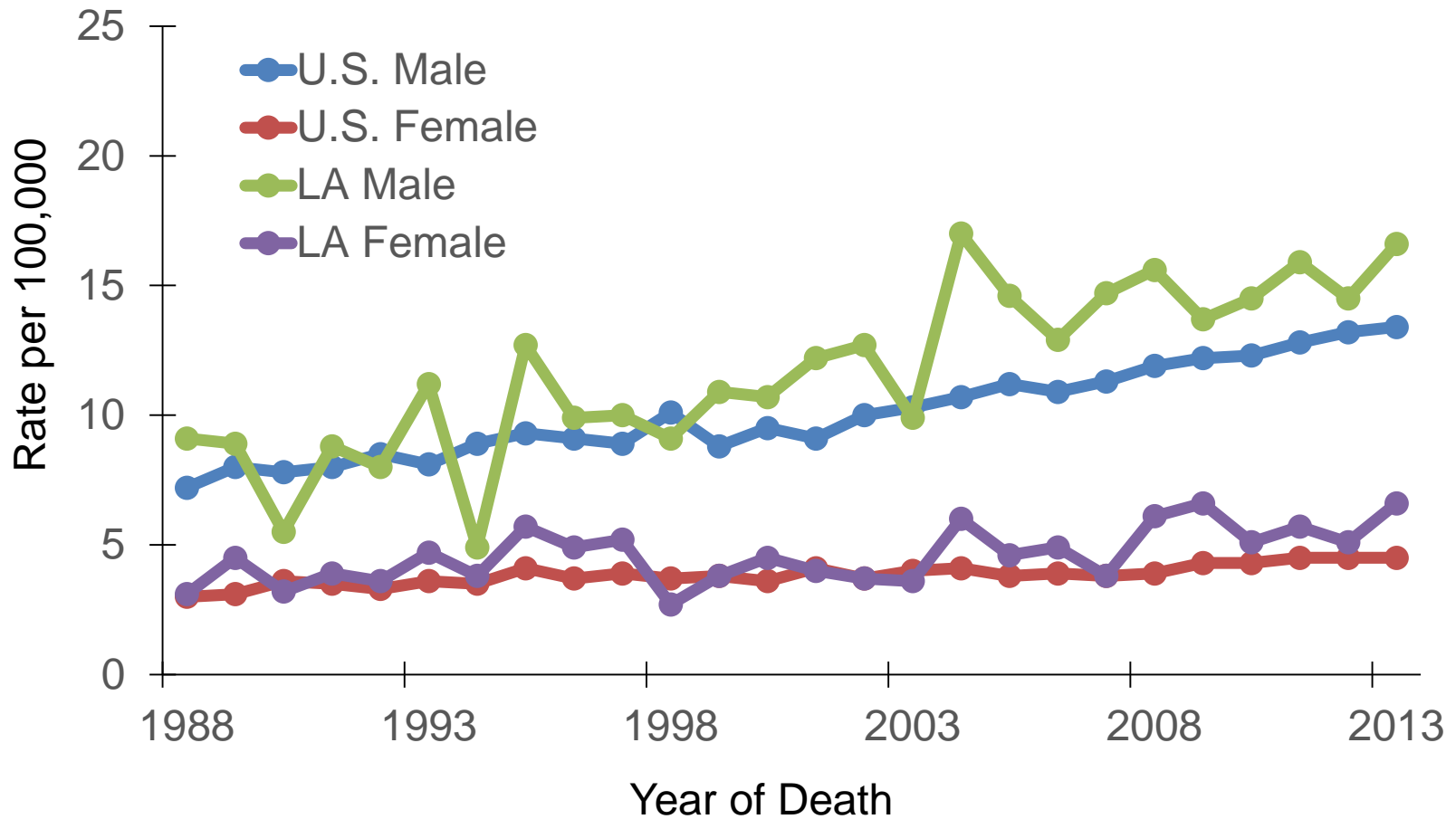
Liver and Intrahepatic Bile Duct Cancer: Trends of Mortality Rates^{1,2}, Whites, 1988-2013



¹ Age-adjusted to the 2000 U.S. standard population.

² Data source: National Center of Health Statistics (NCHS).

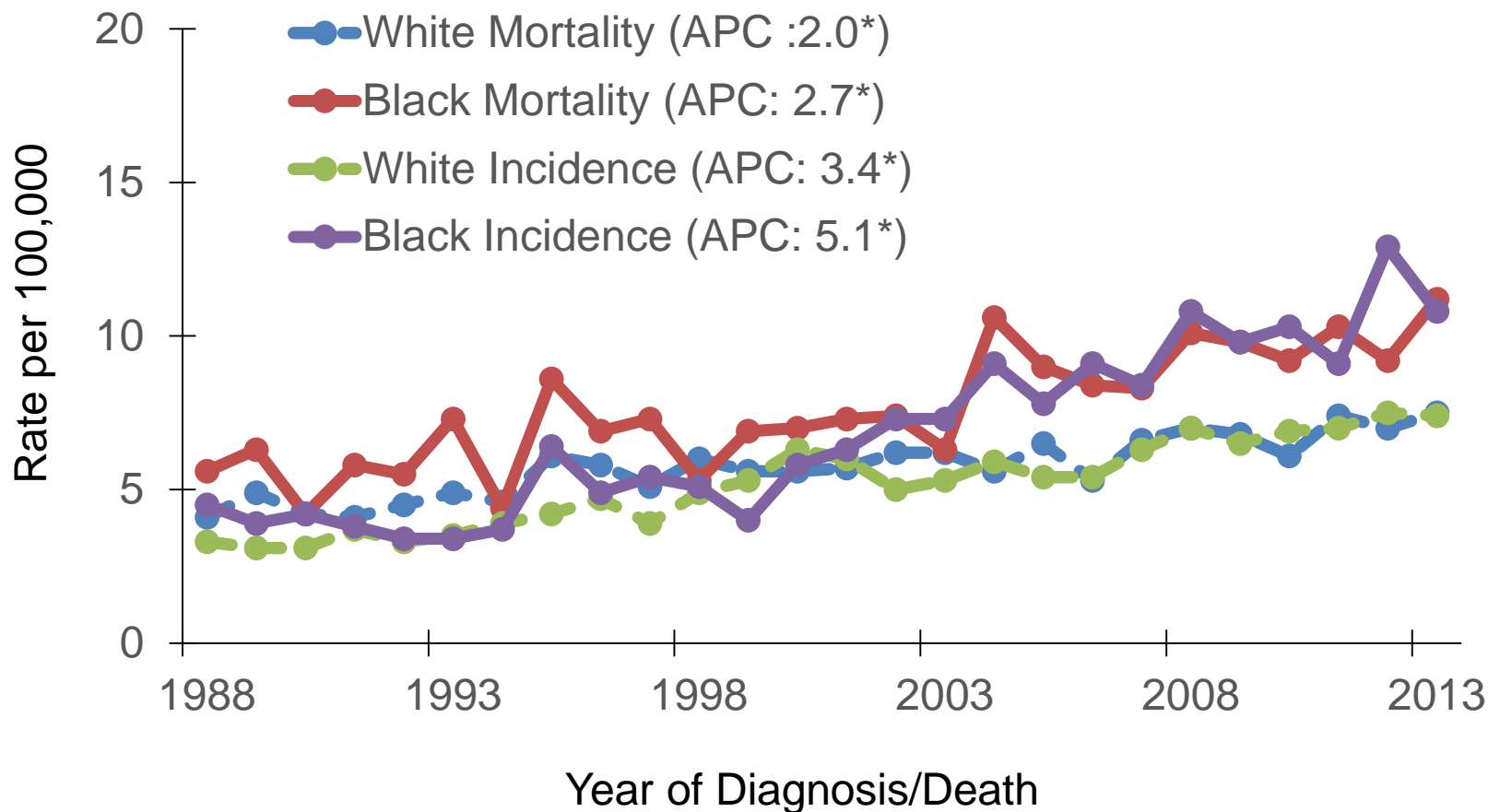
Liver and Intrahepatic Bile Duct Cancer: Trends of Mortality Rates^{1,2}, Blacks, 1988-2013



¹ Age-adjusted to the 2000 U.S. standard population.

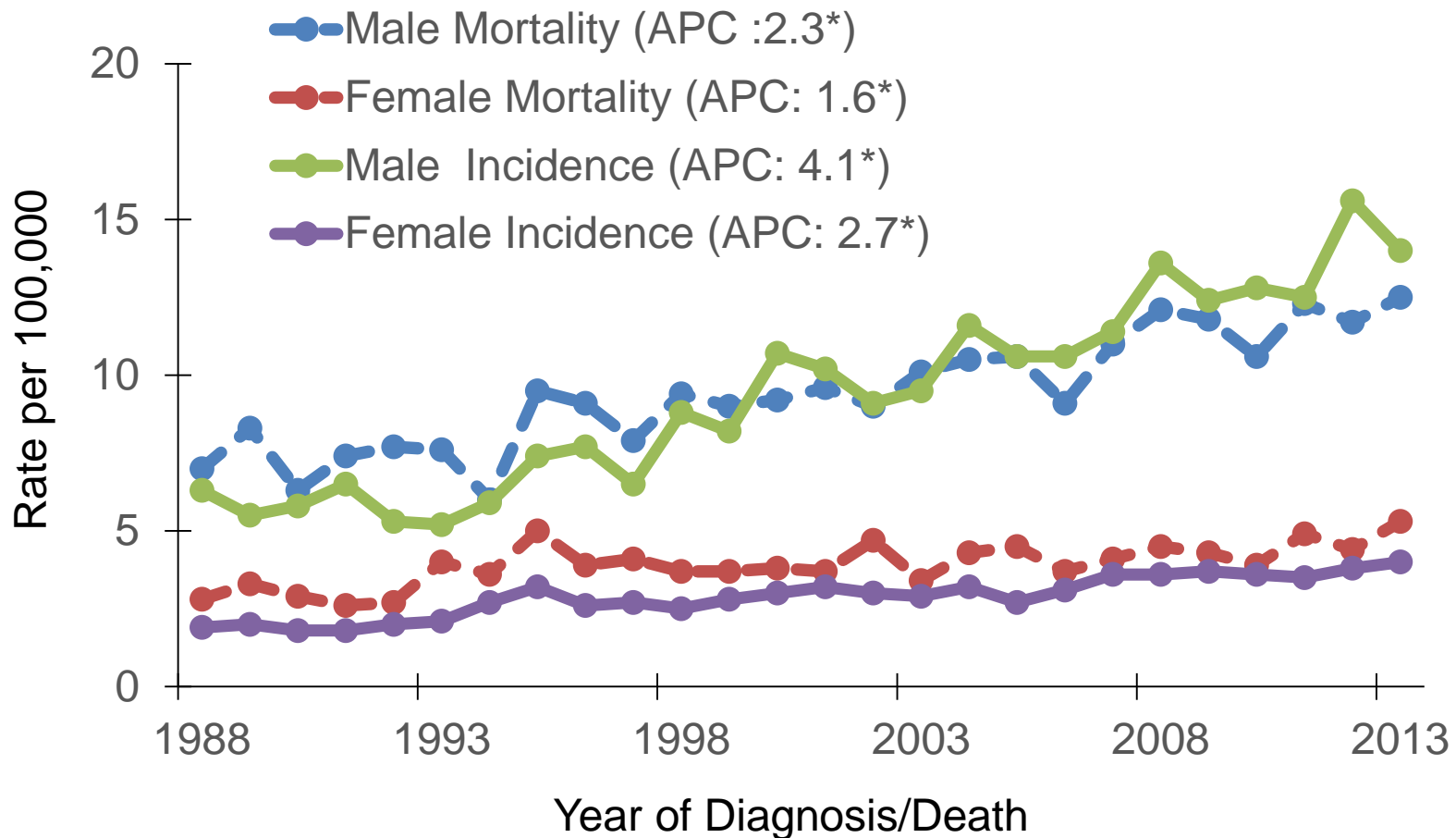
² Data source: National Center of Health Statistics (NCHS).

Liver and Intrahepatic Bile Duct: Trends of Incidence and Mortality Rates by Race, Louisiana, 1988-2013



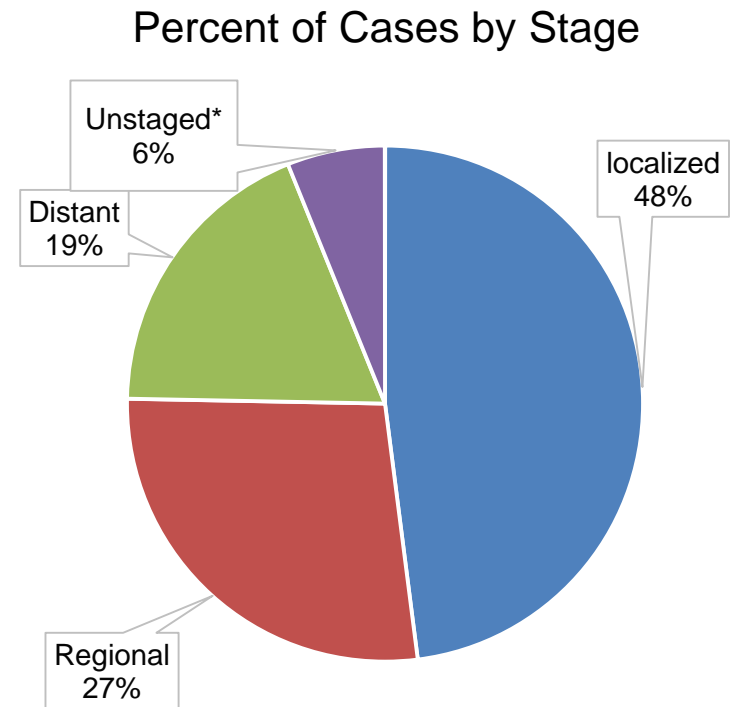
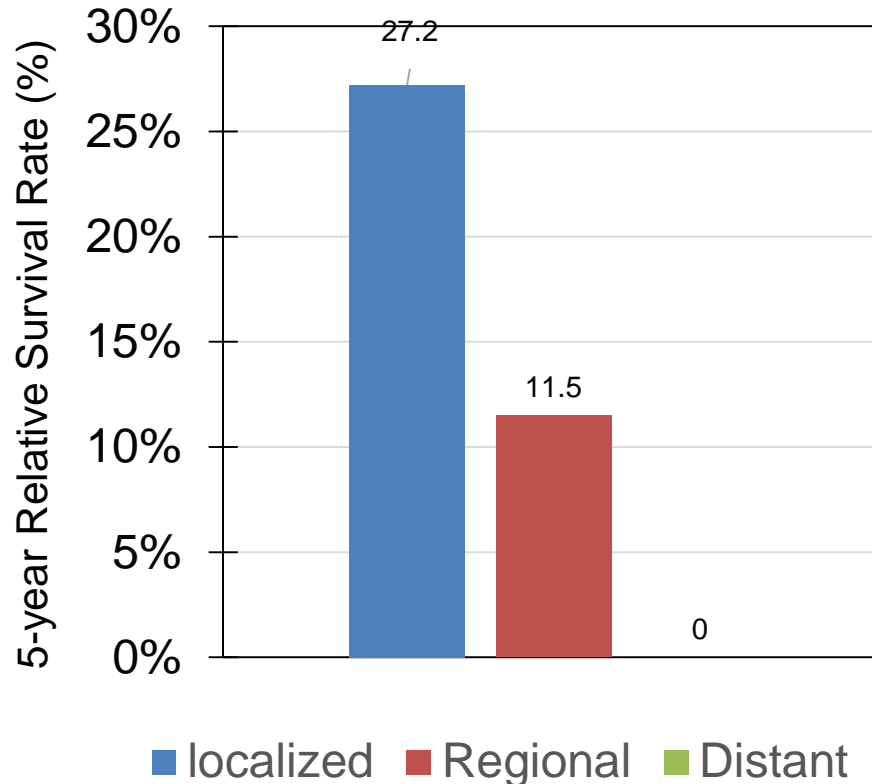
*APCs were calculated using weighted least squares method

Liver and Intrahepatic Bile Duct: Trends of Incidence and Mortality Rates by Gender, Louisiana, 1988-2013



*APCs were calculated using weighted least squares method

Liver and Intrahepatic Bile Duct Cancer¹: Louisiana 5-Year Relative Survival by Stage², White Males, 2007-2013

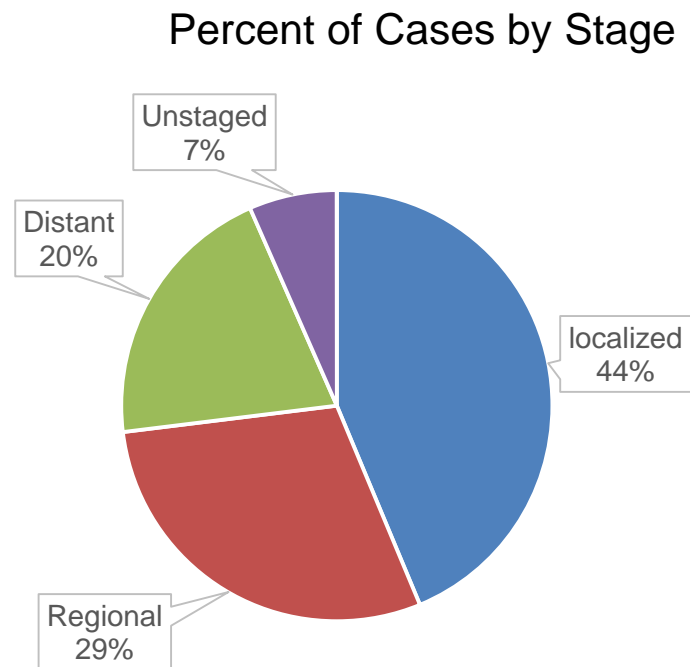
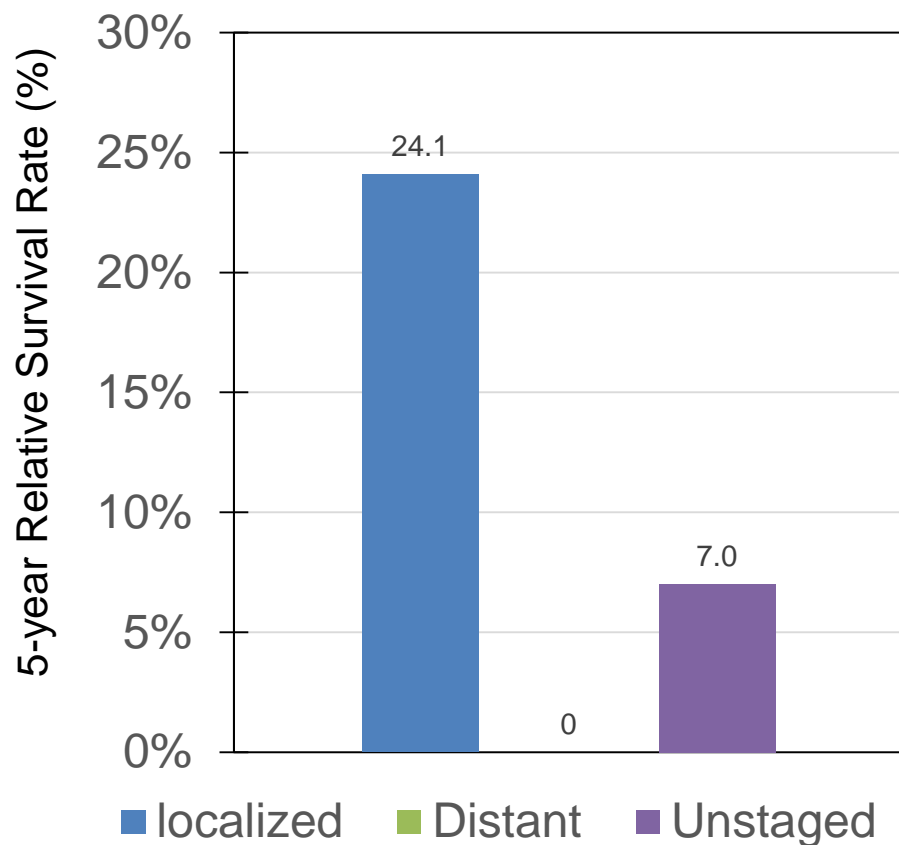


¹ Liver and intrahepatic bile duct cancer includes first primary only (sequence number 0 or 1).

² The stage distribution is based on Summary Stage 2000.

* The survival rate for unstaged cases could not be calculated.

Liver and Intrahepatic Bile Duct Cancer¹: Louisiana 5-Year Relative Survival by Stage², Black Males, 2007-2013

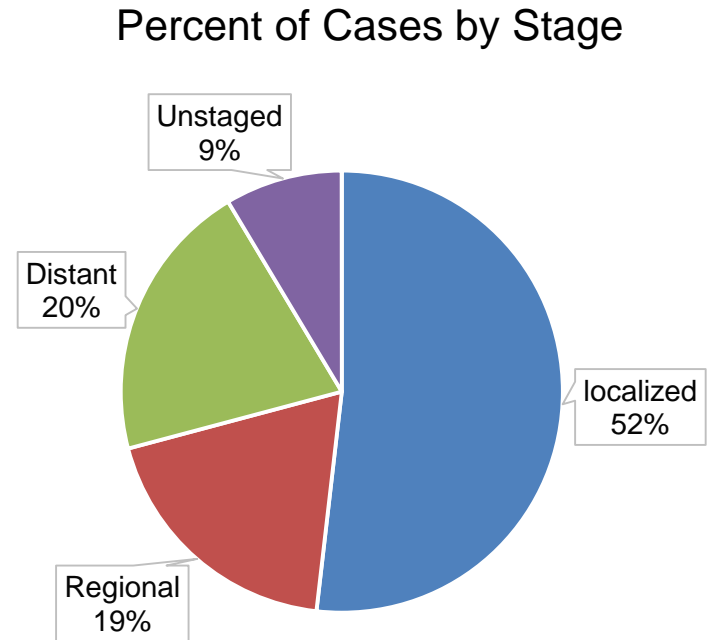
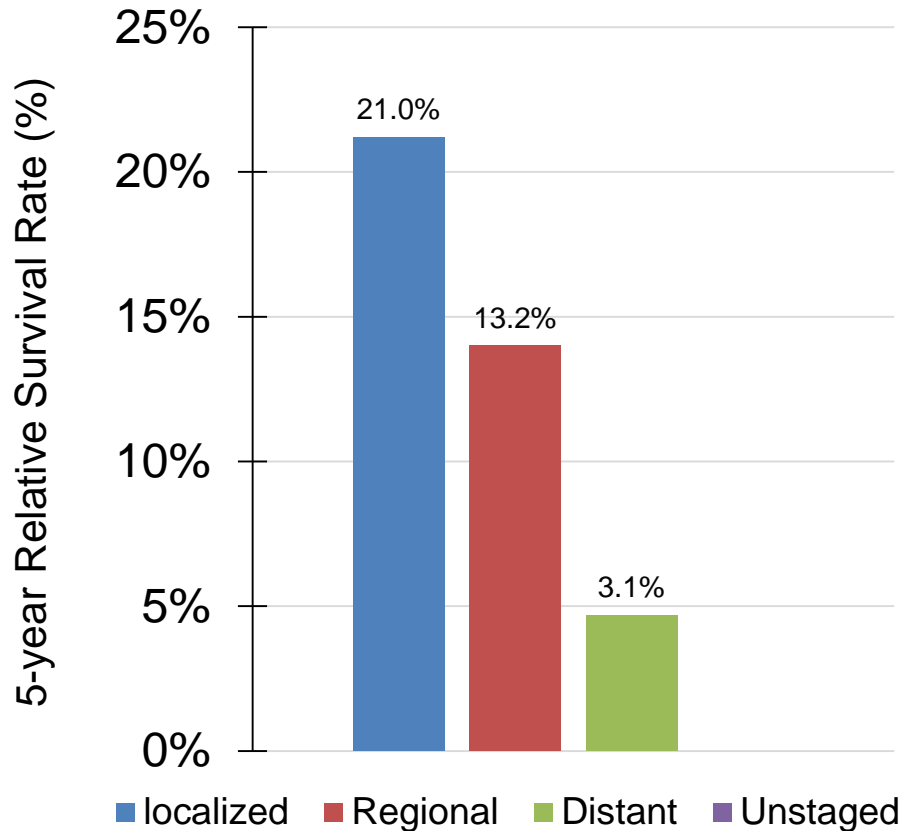


¹ Liver and intrahepatic bile duct cancer includes first primary only (sequence number 0 or 1).

² The stage distribution is based on Summary Stage 2000.

* The survival rate for cases diagnosed at a regional stage could not be calculated.

Liver and Intrahepatic Bile Duct Cancer¹: Louisiana 5-Year Relative Survival by Stage², White Females, 2007-2013

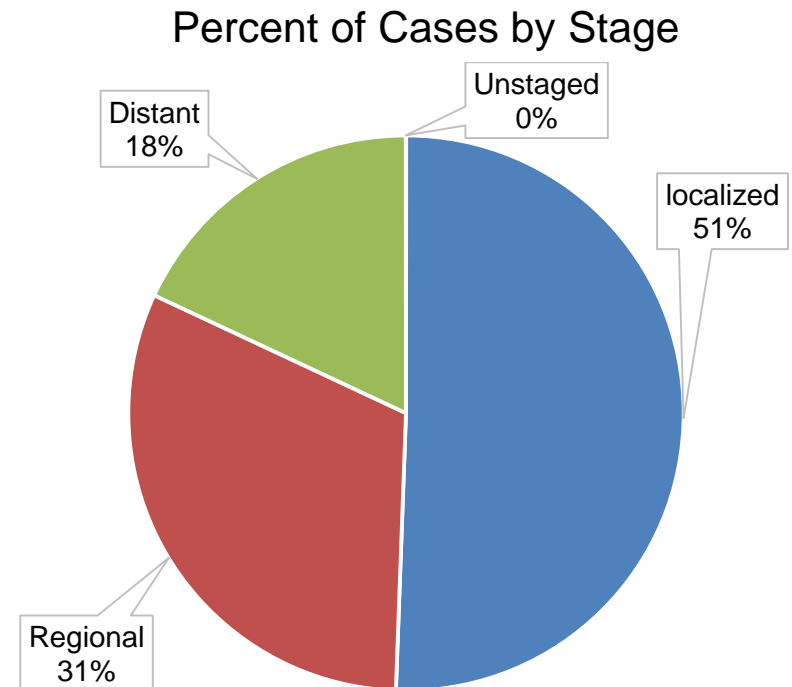
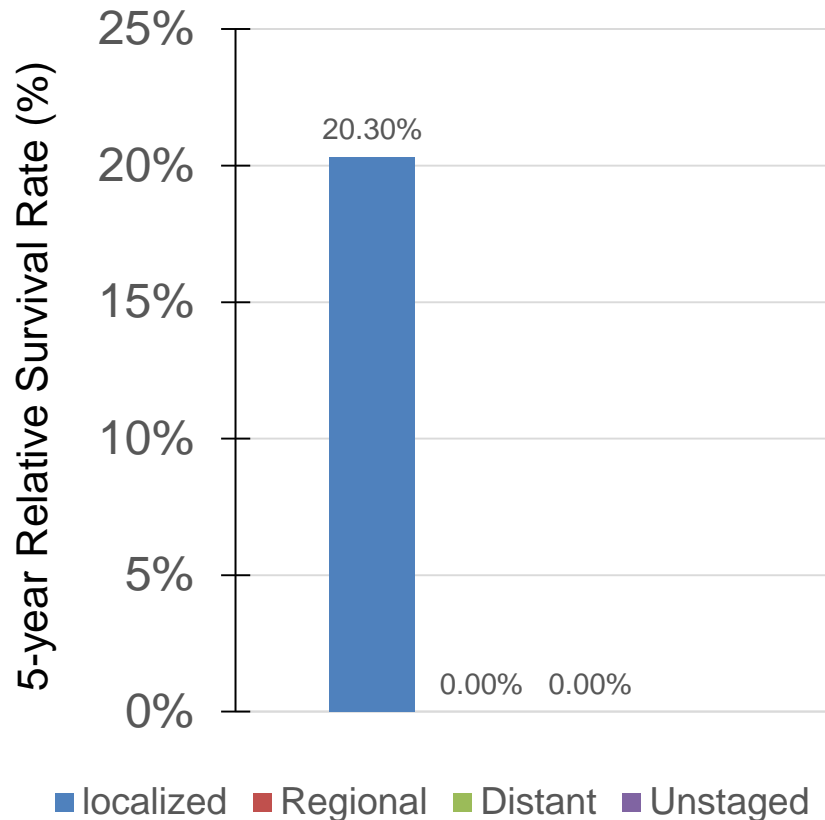


¹ Liver and intrahepatic bile duct cancer includes first primary only (sequence number 0 or 1).

² The stage distribution is based on Summary Stage 2000.

* The survival for unstaged cases not be calculated.

Liver and Intrahepatic Bile Duct Cancer¹: Louisiana 5-Year Relative Survival by Stage², Black Females, 2007-2013



¹ Liver and intrahepatic bile duct cancer includes first primary only (sequence number 0 or 1).

² The stage distribution is based on Summary Stage 2000.

* The survival rate for unstaged cases could not be displayed due to fewer than 16 cases.

Data Sources

Surveillance, Epidemiology, and End Results (SEER) Program (www.seer.cancer.gov), SEER*Stat Databases, National Cancer Institute, DCCPS, Surveillance Research Program, Surveillance Systems Branch, released April 2016, based on the November 2015 submission.

For Incidence:

- Incidence - SEER 18 Regs Research Data + Hurricane Katrina Impacted Louisiana Cases, Nov 2015 Sub (2000-2013) <Katrina/Rita Population Adjustment>
- SEER*DMS - LTR 1988-2013, June 7, 2016

For Mortality:

- Mortality – all COD, aggregated with States, Total U.S. (1969-2013) <Katrina/Rita Population Adjustment>

For Survival:

- Incidence - SEER 18 Regs Research Data + Hurricane Katrina Impacted Louisiana Cases, Nov 2015 Sub (1973-2013 varying)

Acknowledgements

Hospital cancer registries (<http://louisianatumorregistry.lsuhs.edu/>)

Louisiana Cancer Registrars' Association (<http://www.lcra-usa.org/>)

Physicians and staff members in:

- Medical records offices
- Pathology laboratories
- Physician offices and clinics
- Hospice programs and nursing homes

Regional and central offices of the Louisiana Tumor Registry
(<http://louisianatumorregistry.lsuhs.edu/regionalregistries.html>)

School of Public Health, LSU Health Sciences Center–New Orleans

Louisiana Cancer and Lung Trust Fund Board

Coroners' offices

Sources of LTR Funding

- National Cancer Institute, SEER Program
- National Program of Cancer Registries, CDC
- Louisiana Health Care Services Division

Editors

Xiangrong Li, MD, MSPH

Meichin Hsieh, PhD, MSPH, CTR

Lauren Maniscalco, MPH

Xiaocheng Wu, MD, MPH, CTR

Contributors

Brent Mumphrey, BS

Tina Lefante, MPH

Lisa Pareti, BS, RHIT, CTR

Yong Yi, PhD, MS

Questions?

Contact:

LTR-info@lsuhsc.edu

or

504-568-5757