

Louisiana Cancer Facts & Figures, Kidney and Renal Pelvis Cancer, 2016

Louisiana Tumor Registry

December 5, 2016

Kidney and Renal Pelvis Cancer

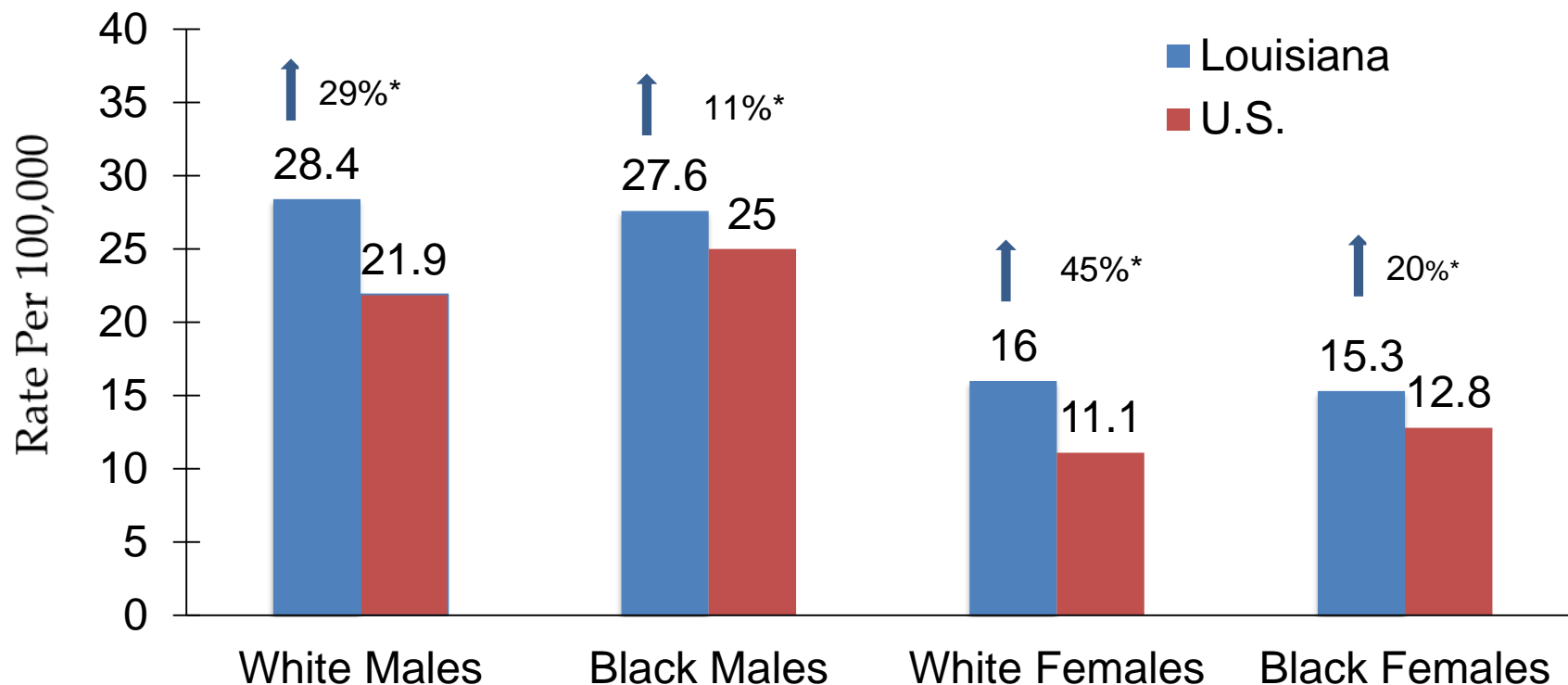
- From 2009 to 2013, Louisiana had the highest incidence rate for kidney and renal pelvis cancer, and the 2nd highest mortality rate of any state in the nation (all races and sexes combined).¹
- About 1,140 new kidney and renal pelvis cancers are expected to be diagnosed and about 260 people are expected to die of kidney and renal pelvis cancers in Louisiana in 2016.^{2,3}

¹ Data source: NCI state cancer profile.

² Data source: American Cancer Society, Cancer Facts & Figures 2016

³ ICD-O-3/WHO 2008 code: C649, C659; excluding ICD-O-3 histology (type): 9050-9055, 9140, 9590-9992

Kidney and Renal Pelvis Cancer: Incidence Rates^{1,2}, 2009-2013

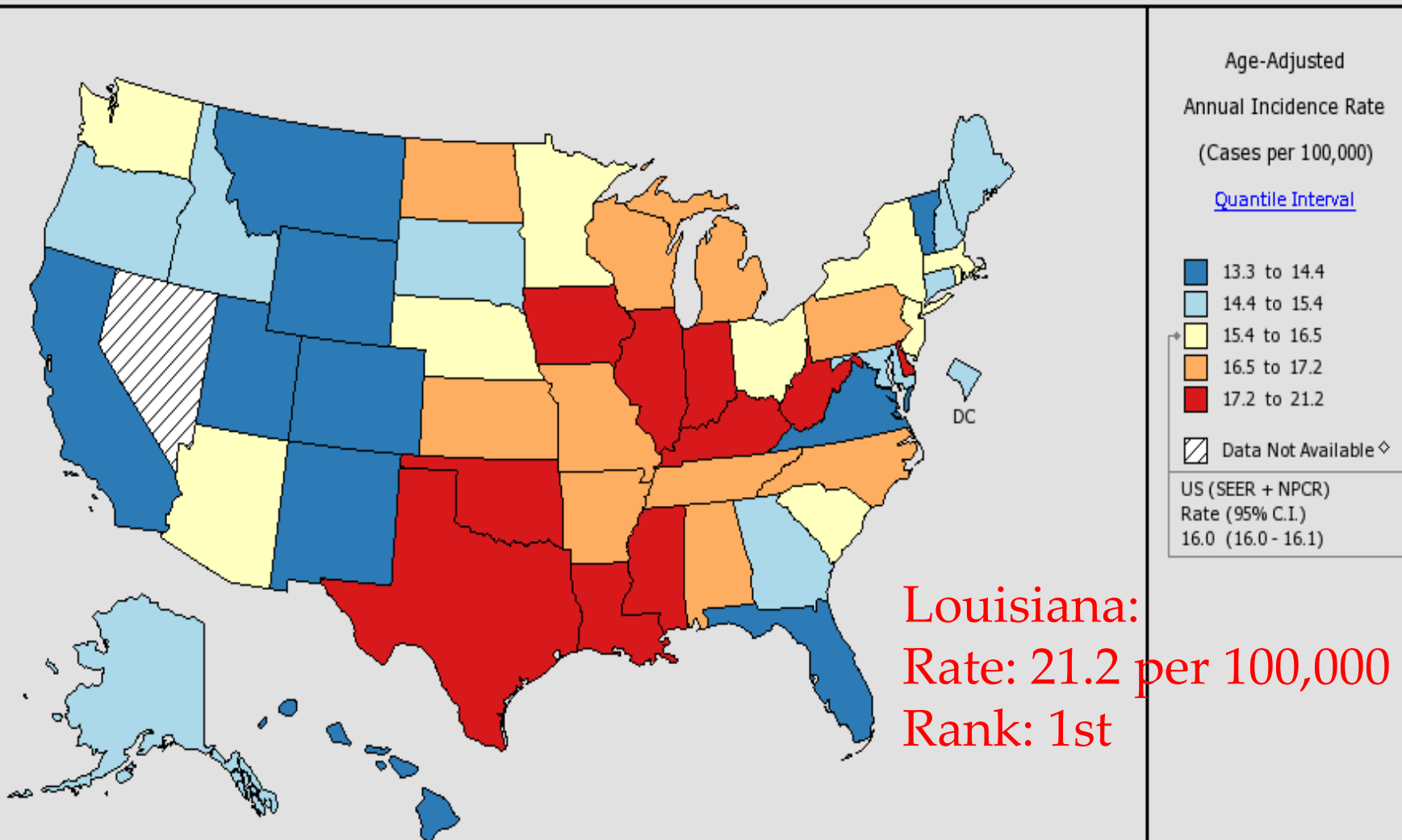


1 Age-adjusted to the 2000 U.S. standard population.

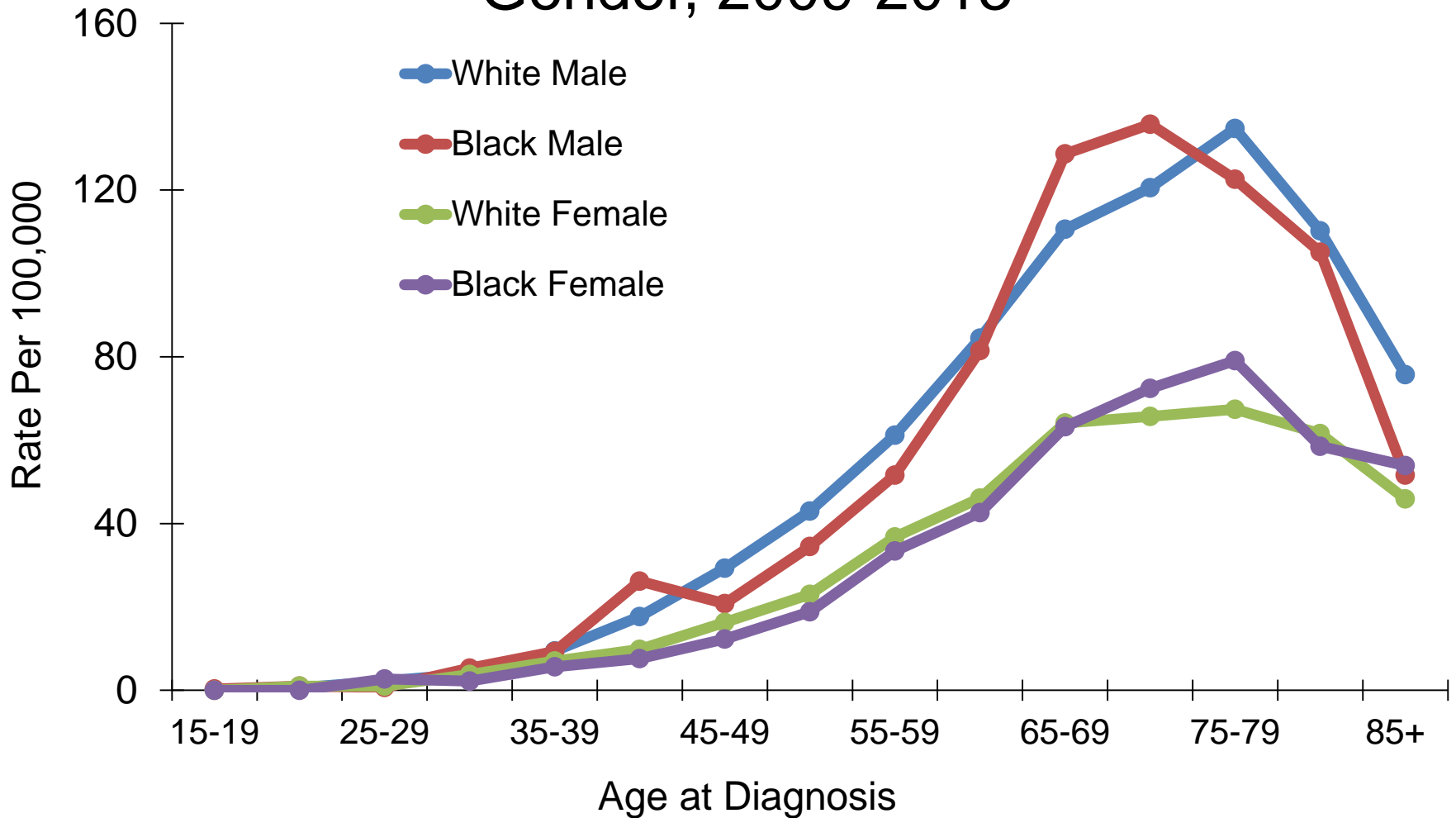
2 U.S. Incidence data source: 18 SEER registries.

* Incidence rate of Louisiana is significantly different from that of the U.S.

Incidence Rates of Kidney and Renal Pelvis Cancer in the U.S., All Races, Both Sexes, 2009-2013

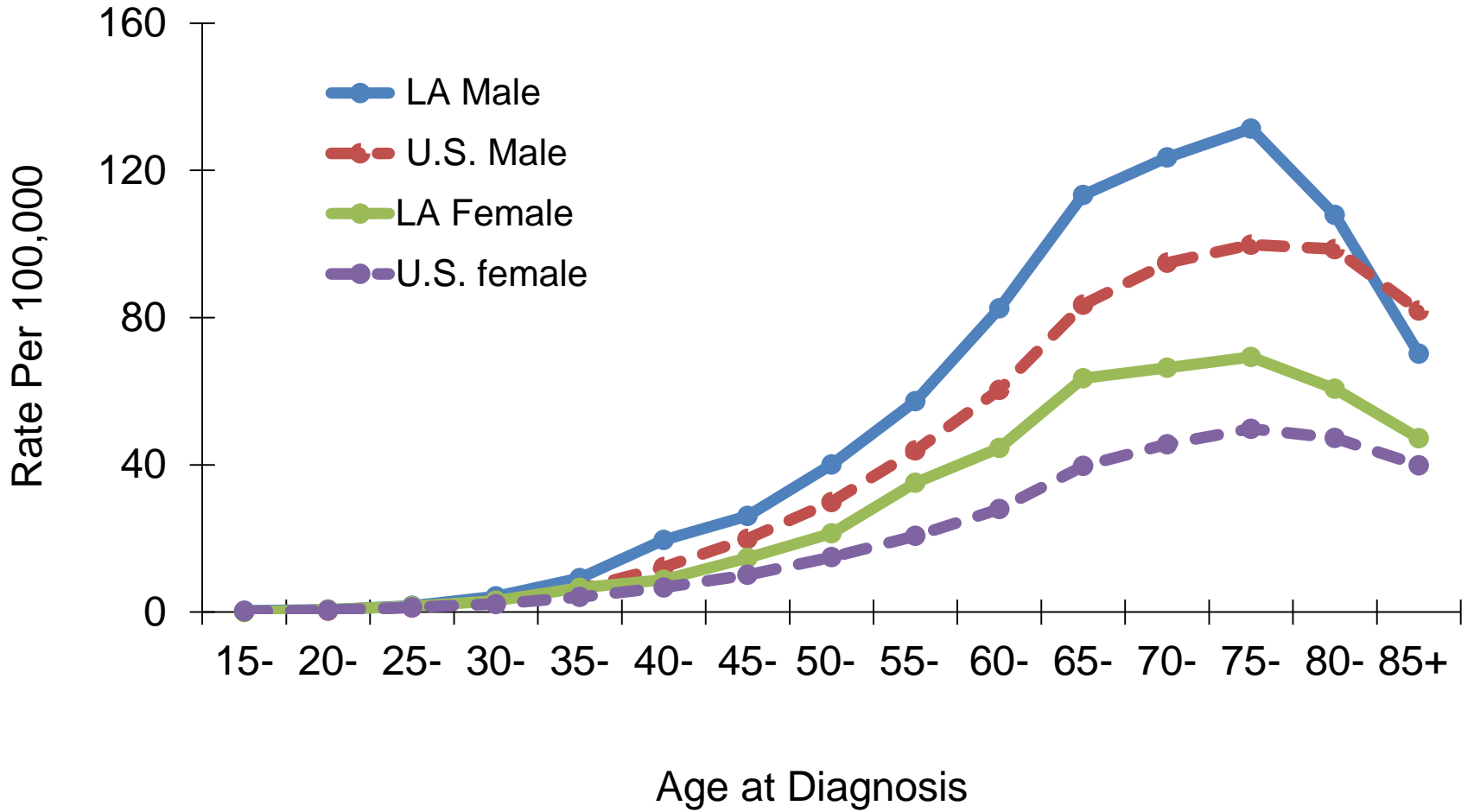


Kidney and Renal Pelvis Cancer: Age-Specific Incidence Rates in Louisiana by Race and Gender, 2009-2013



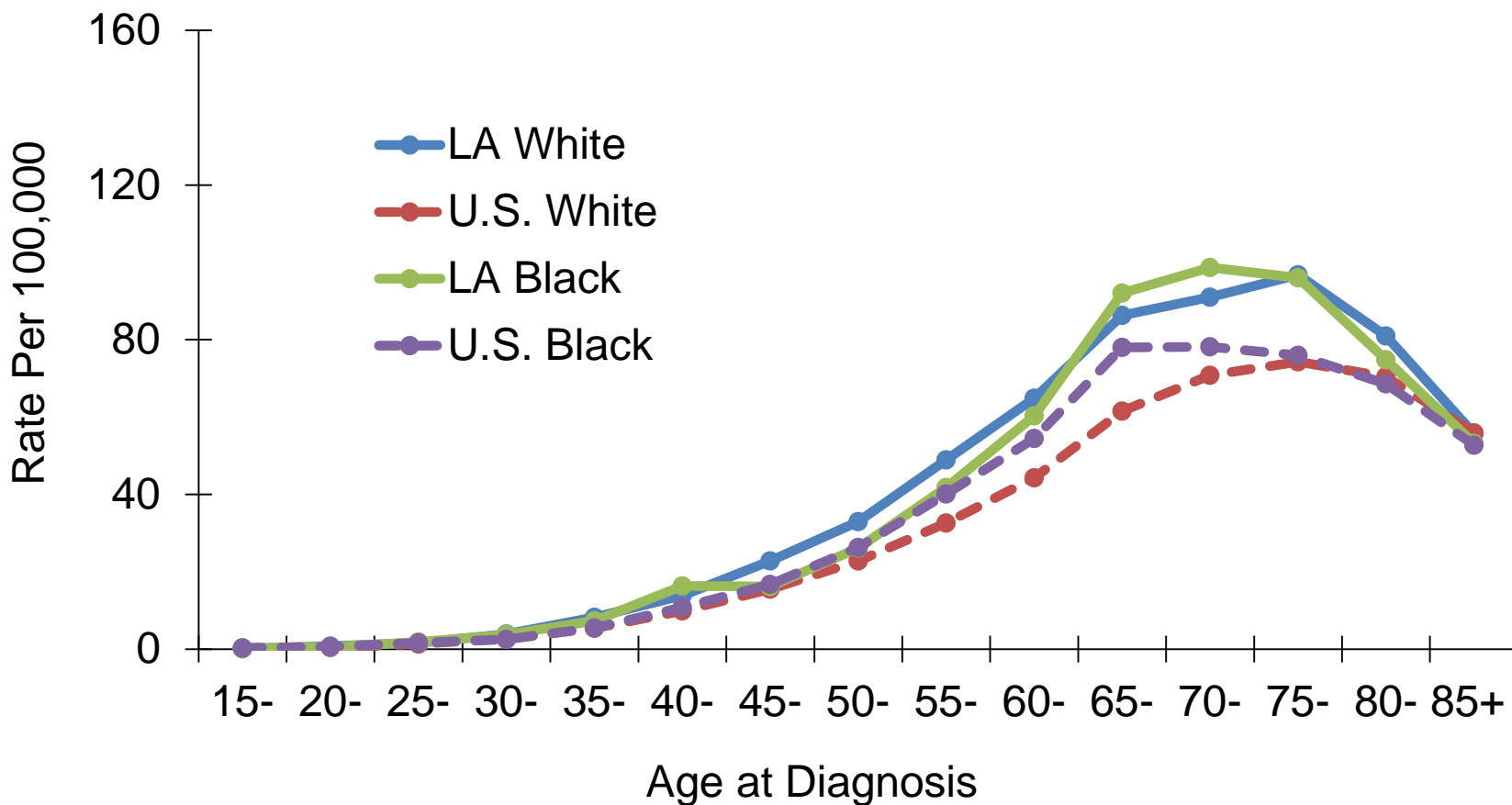
U.S. data source: 18 SEER registries.

Kidney and Renal Pelvis Cancer: Age-Specific Incidence Rates by Gender, 2009-2013



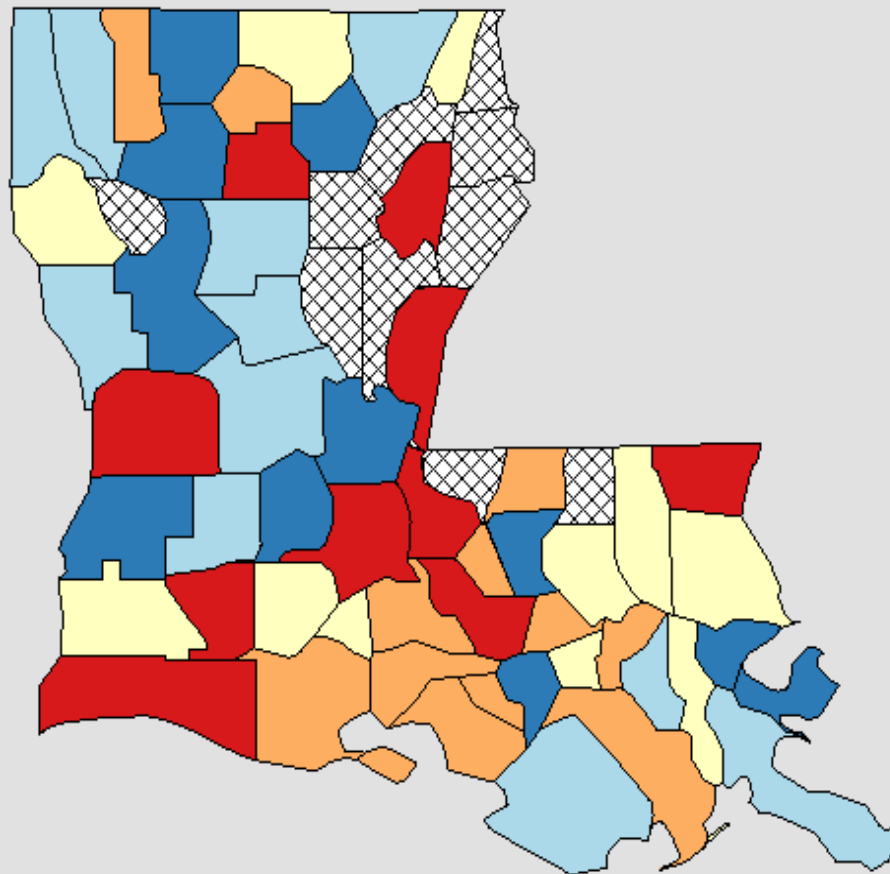
U.S. data source: 18 SEER registries.

Kidney and Renal Pelvis Cancer: Age-Specific Incidence Rates by Race, 2009-2013



U.S. data source: 18 SEER registries.

Incidence Rates of Kidney and Renal Pelvis Cancer in the Louisiana, All Races, Both Sexes, 2009-2013



Age-Adjusted
Annual Incidence Rate
(Cases per 100,000)

[Quantile Interval](#)

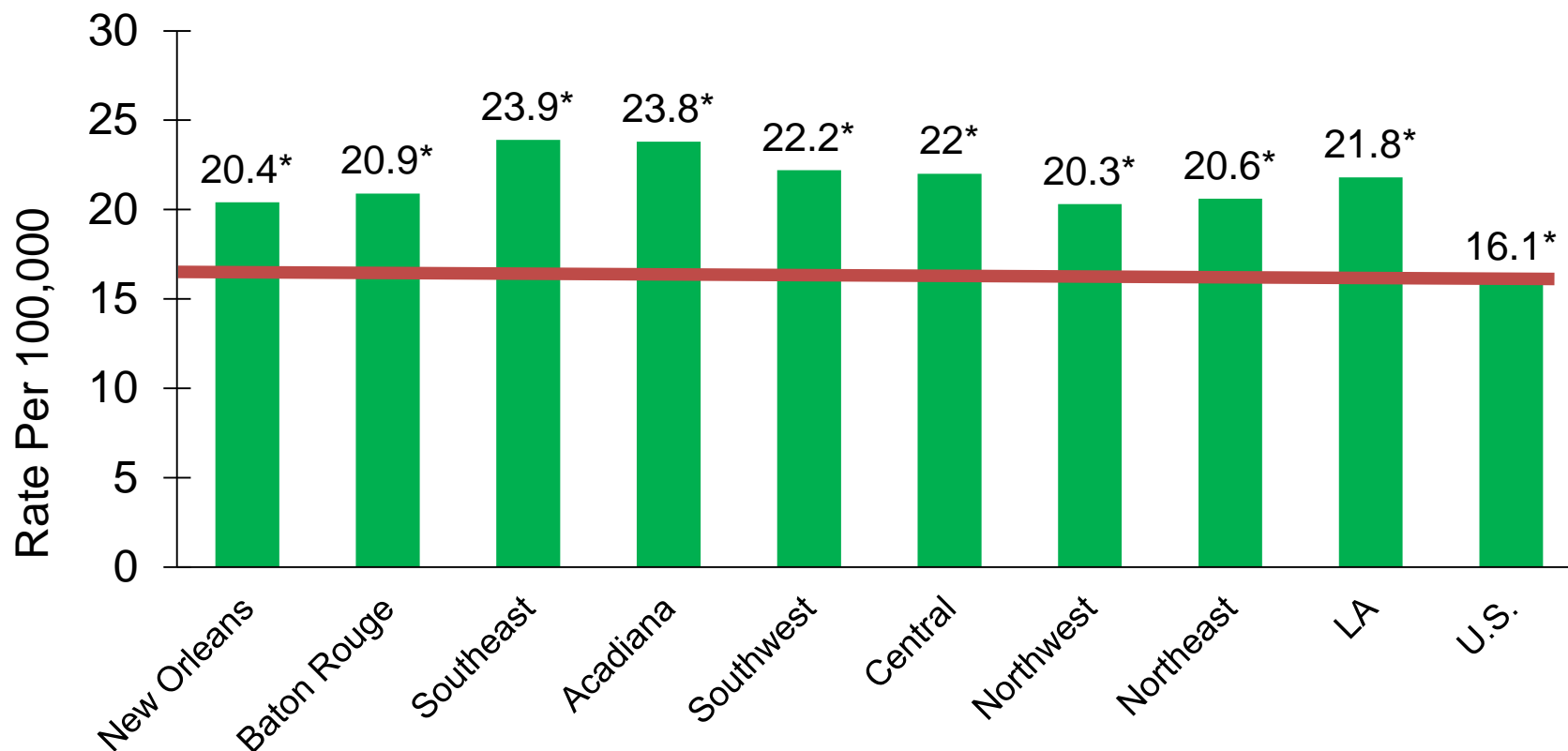
- 12.8 to 18.7
- 18.7 to 21.6
- 21.6 to 23.4
- 23.4 to 26.1
- 26.1 to 42.5

Suppressed * / **

US (SEER + NPCR)
Rate (95% C.I.)
16.0 (16.0 - 16.1)

Louisiana
Rate (95% C.I.)
21.2 (20.6 - 21.8)

Kidney and Renal Pelvis Cancer Incidence^{1,2} by Region: Louisiana, Whites, 2009-2013

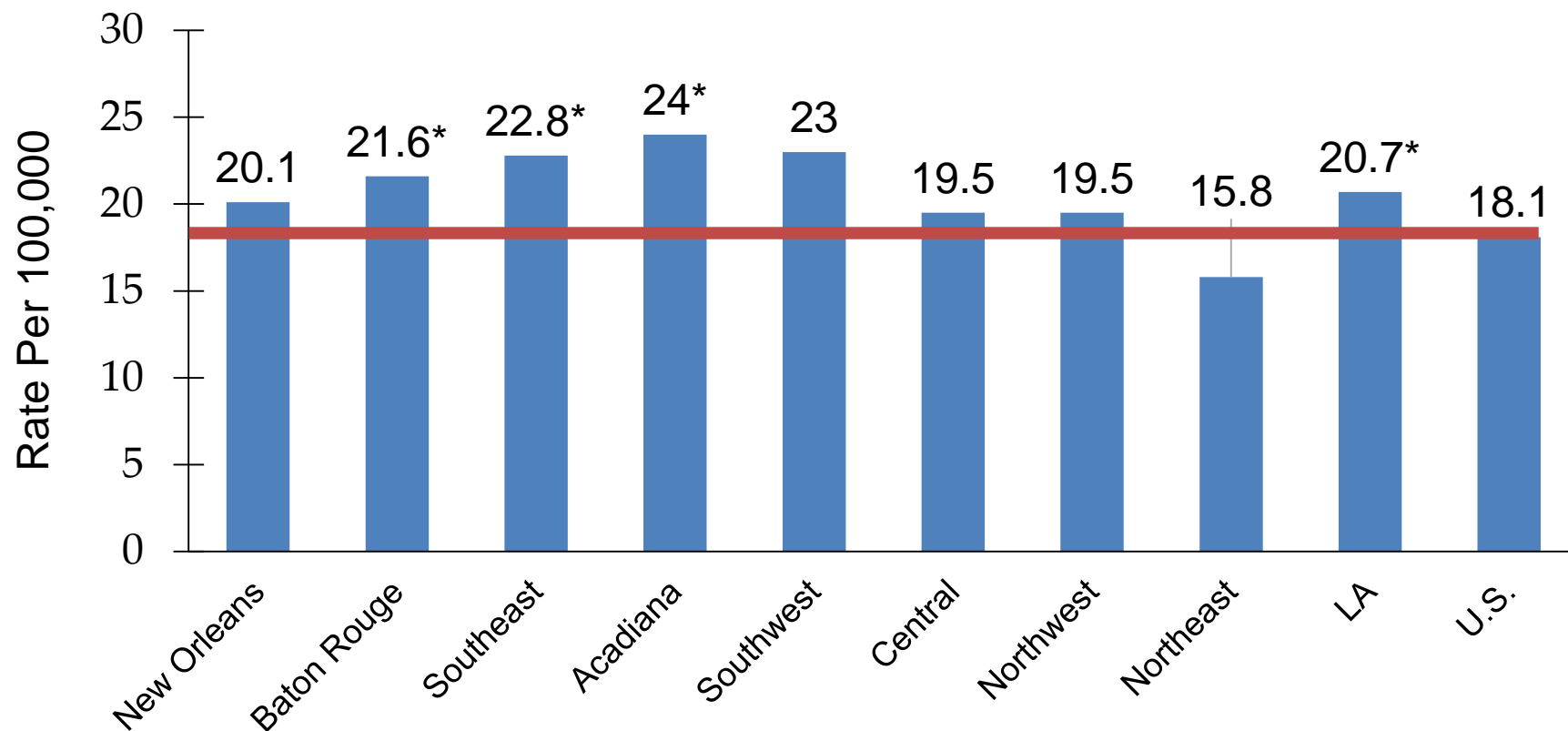


¹ Age-adjusted to the 2000 U.S. standard population.

² Data source for U.S. was the 18 SEER registries.

* Incidence rate of regions/Louisiana is significantly different from that of the U.S.

Kidney and Renal Pelvis Cancer Incidence^{1,2} by Region: Louisiana, Blacks, 2009-2013

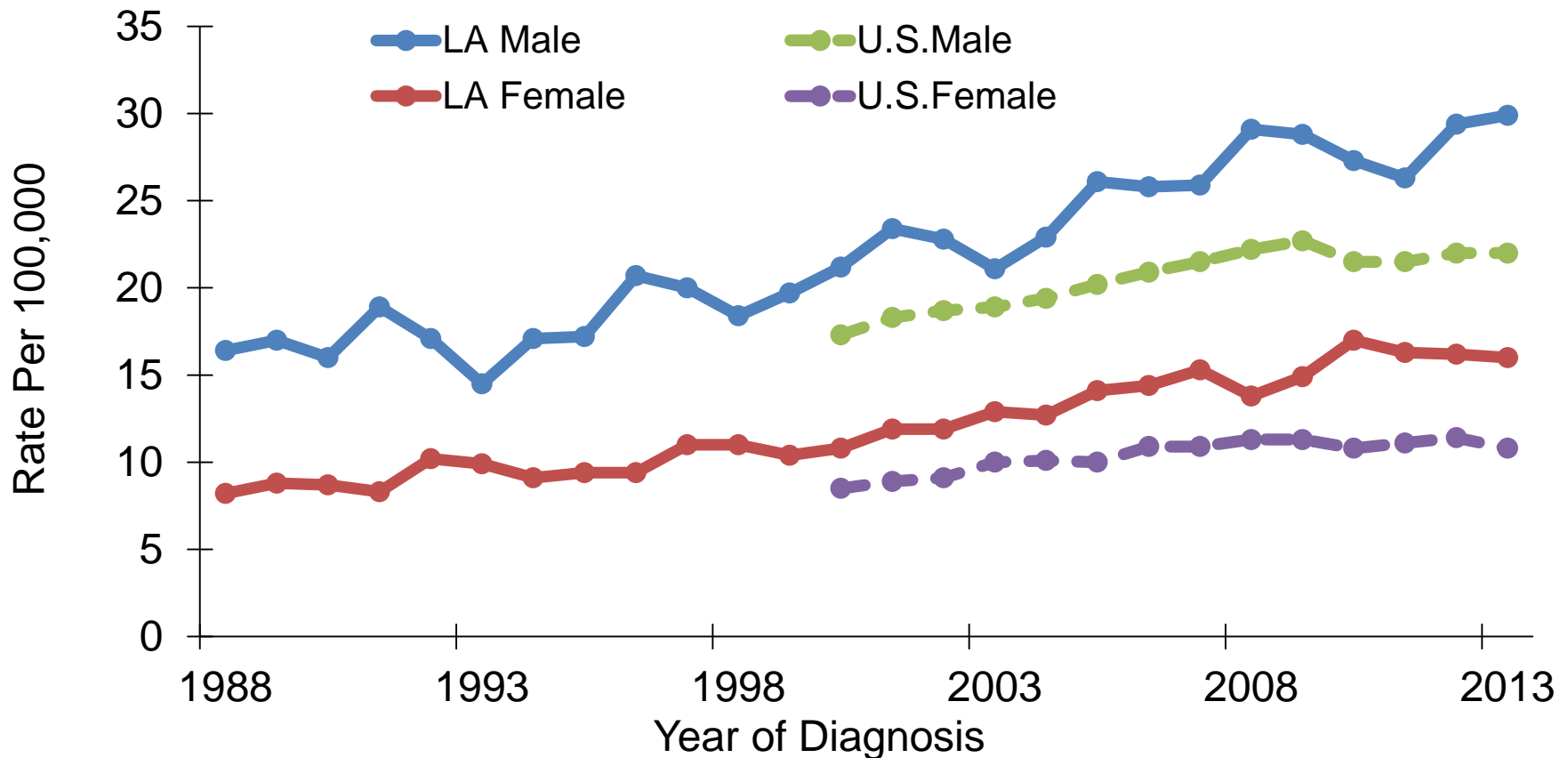


¹ Age-adjusted to the 2000 U.S. standard population.

² Data source for U.S. was the 18 SEER registries.

* Incidence rate of regions/Louisiana is significantly different from that of U.S.

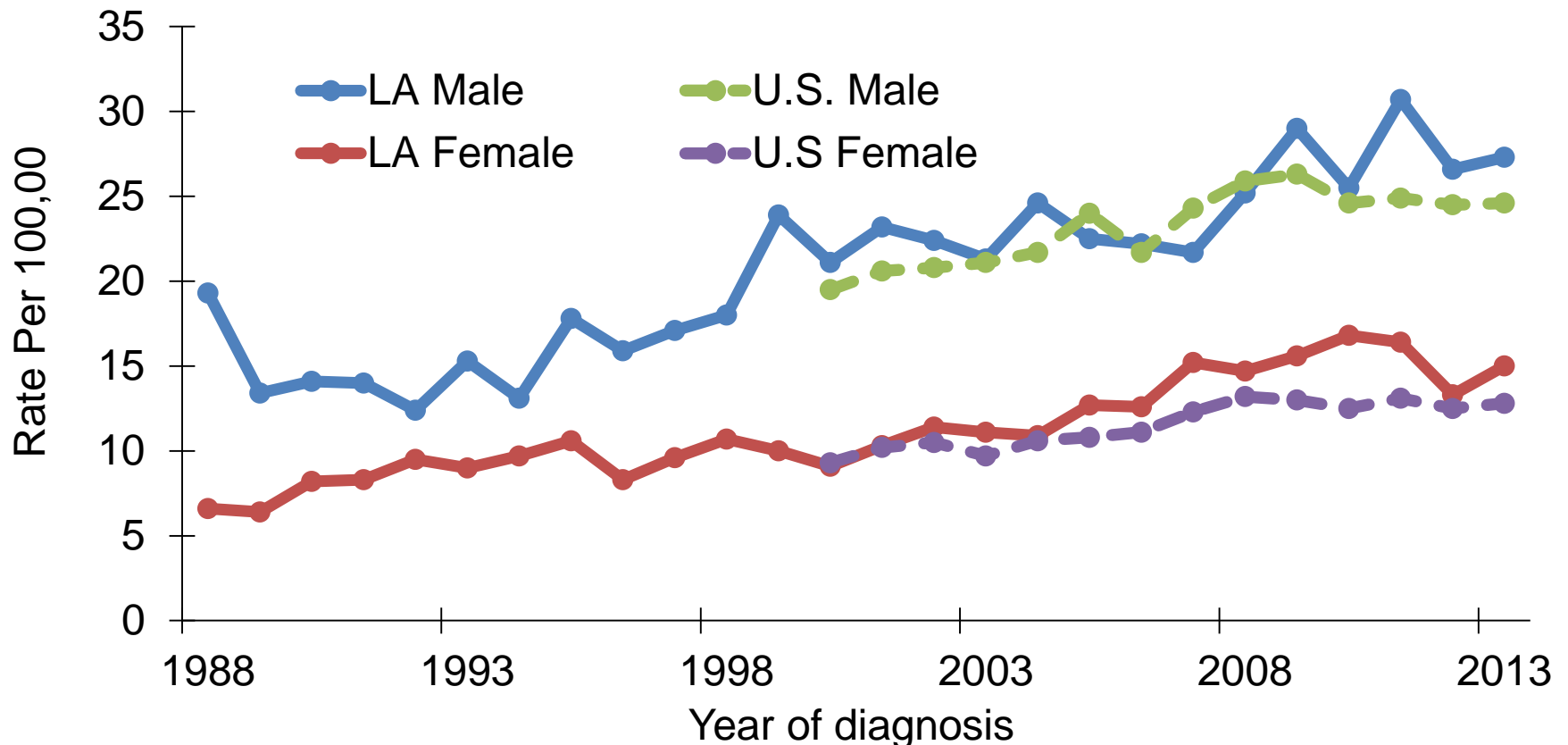
Kidney and Renal Pelvis Cancer: Trends of Incidence Rates^{1,2}, Whites, 1988-2013



¹ Age-adjusted to the 2000 U.S. standard population.

² US data source: 18 SEER registries.

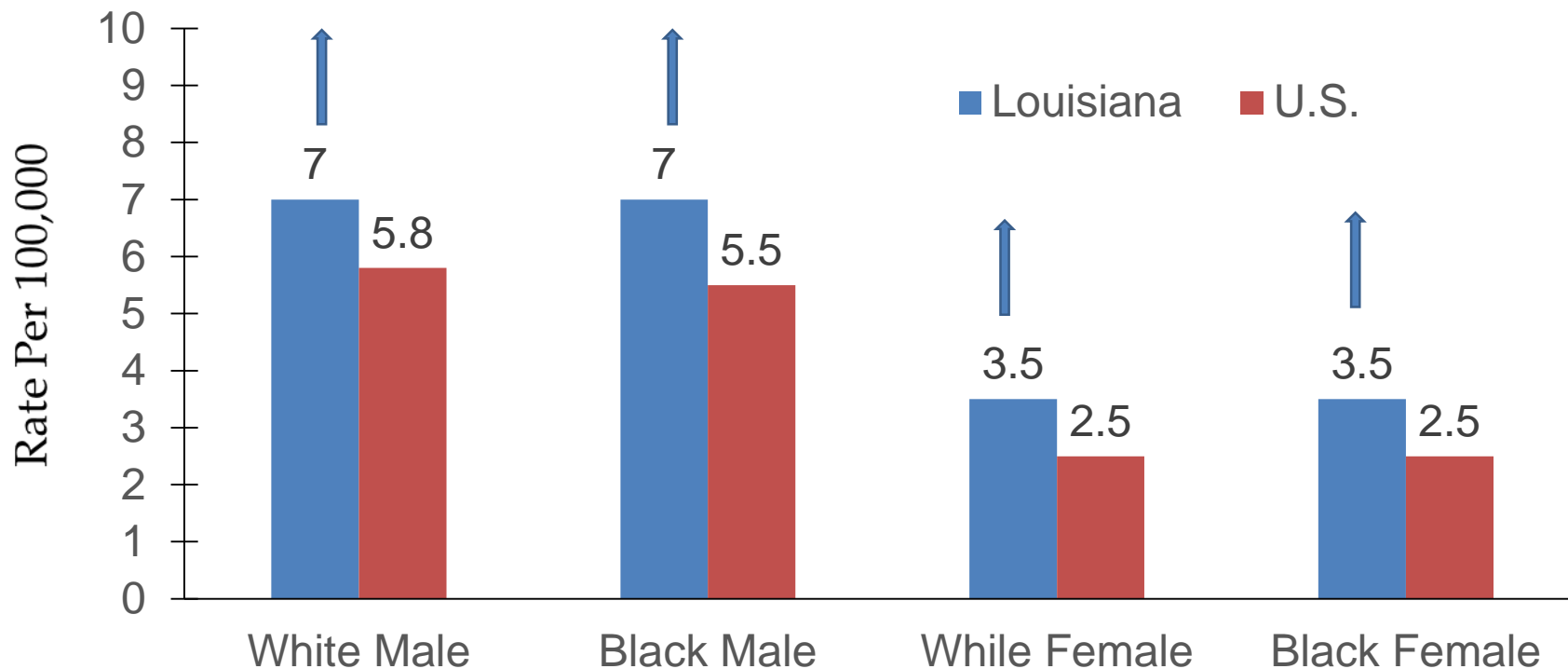
Kidney and Renal Pelvis Cancer: Trends of Incidence Rates^{1,2}, Blacks, 1988-2013



¹ Age-adjusted to the 2000 U.S. standard population.

² U.S. data source: 18 SEER registries.

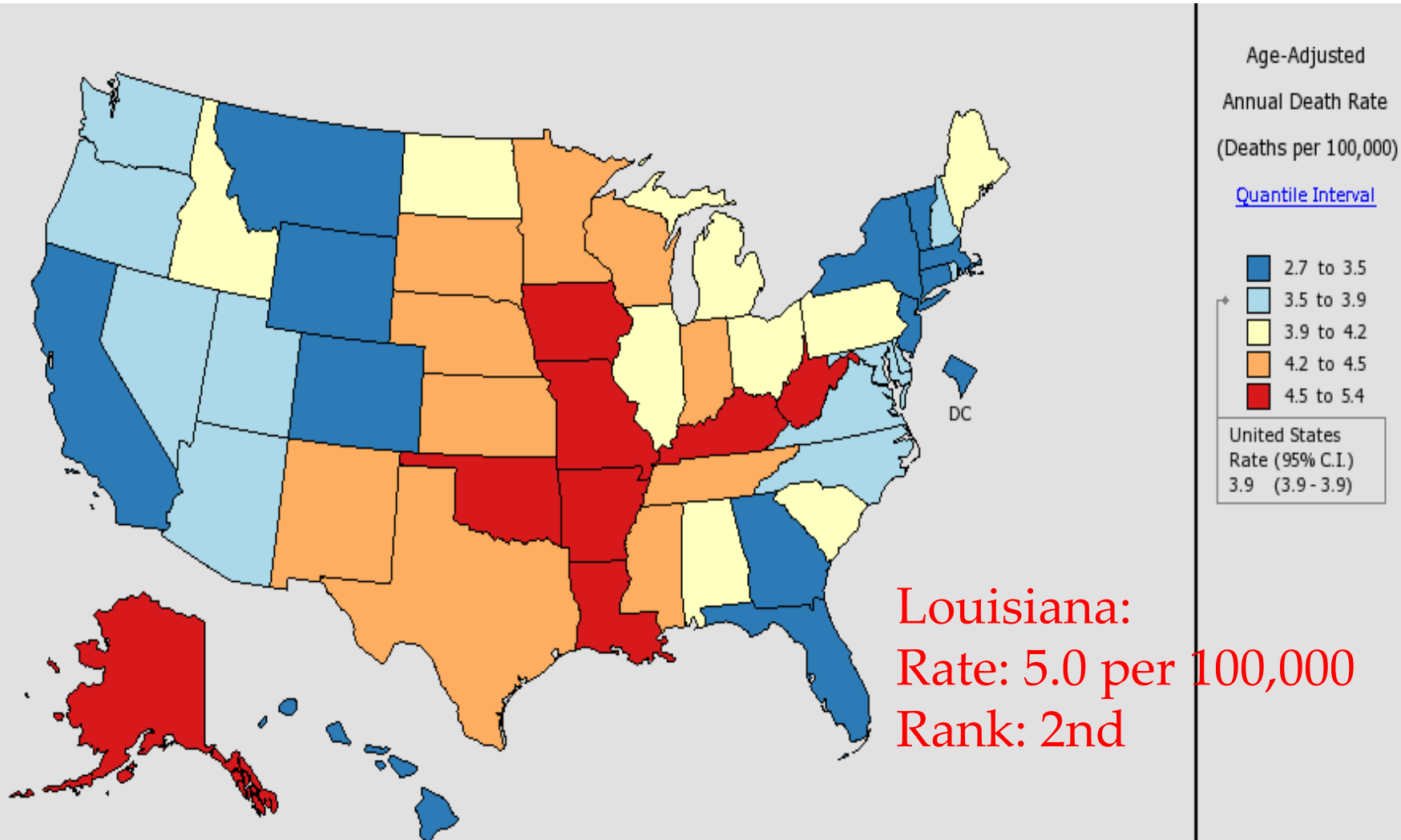
Kidney and Renal Pelvis Cancer Mortality Rates¹ Louisiana vs. US², 2009-2013



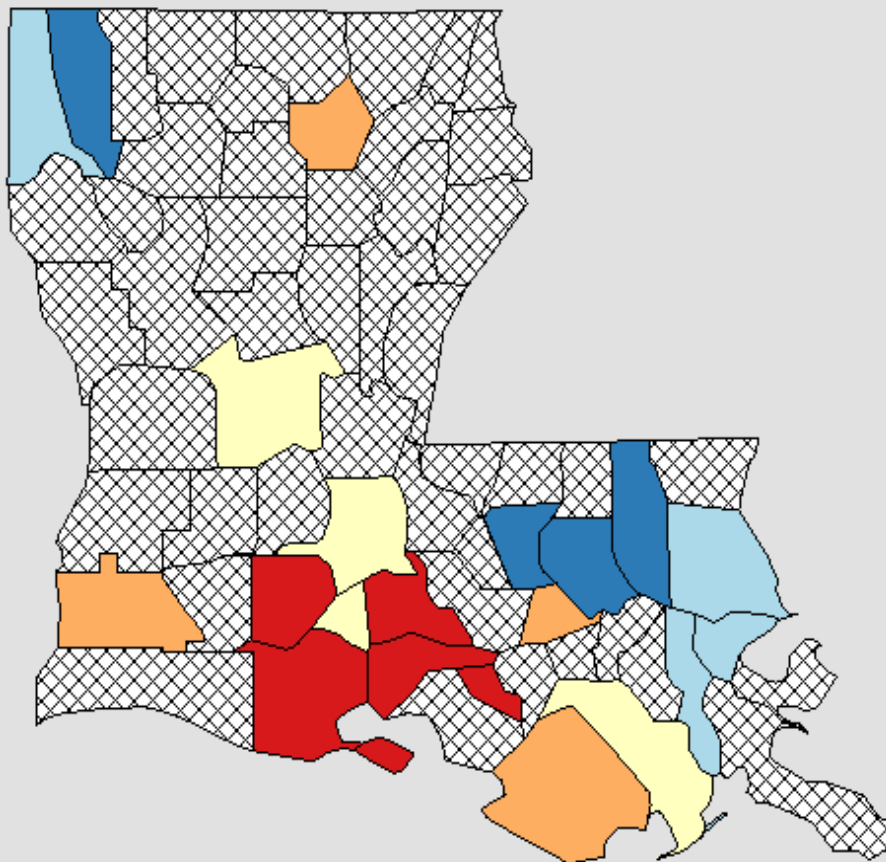
¹ Age-adjusted to the 2000 U.S. standard population.

² Data source: National Center of Health Statistics (NCHS).

Mortality Rates of Kidney and Renal Pelvis Cancer in the U.S., All Races, Both Sexes, 2009-2013



Mortality Rates of Kidney and Renal Pelvis Cancer in the Louisiana , All Races, Both Sexes, 2009-2013



Age-Adjusted
Annual Death Rate
(Deaths per 100,000)

[Quantile Interval](#)

- 3.5 to 4.3
- 4.3 to 4.8
- 4.8 to 5.3
- 5.3 to 6.4
- 6.4 to 8.5

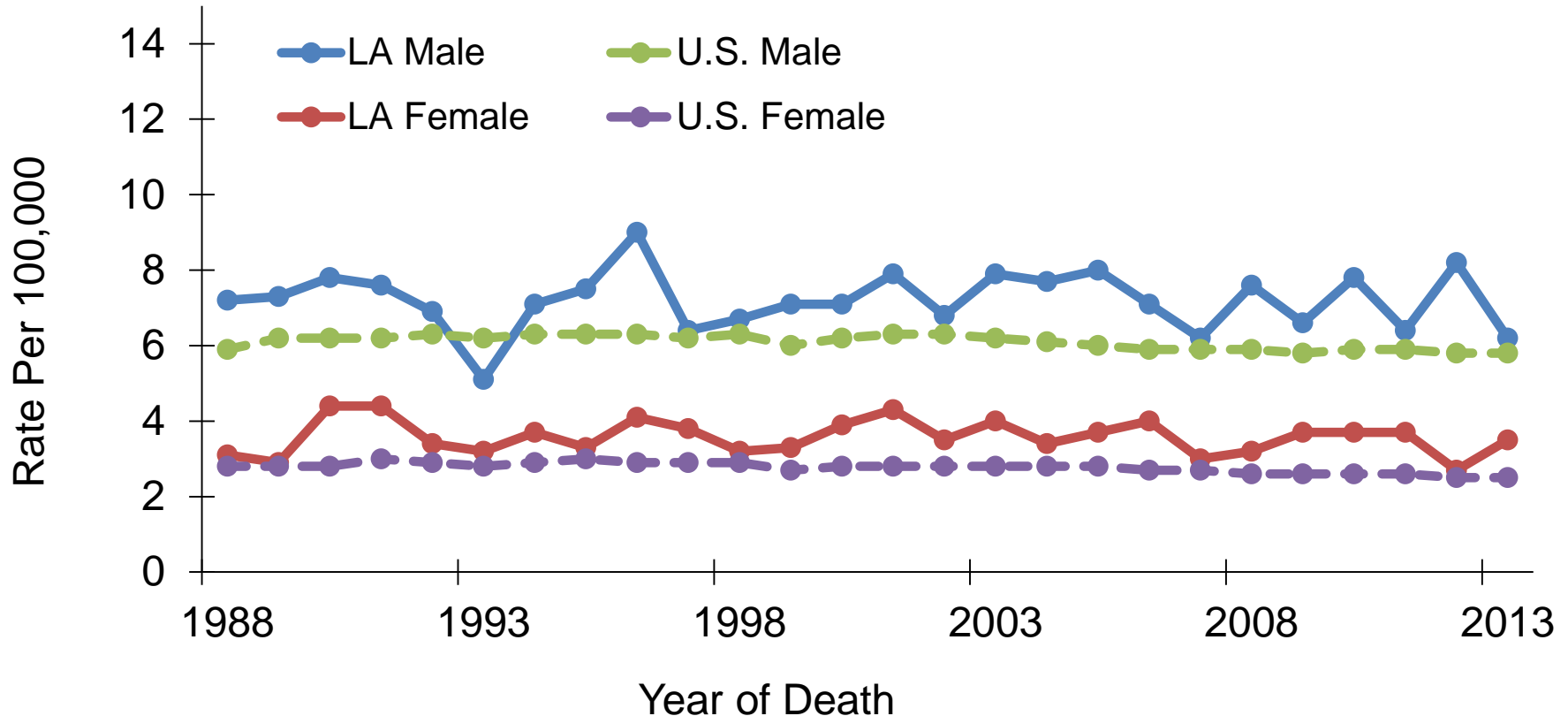
Suppressed*

United States
Rate (95% C.I.)
3.9 (3.9 - 3.9)

Louisiana
Rate (95% C.I.)
5.0 (4.7 - 5.3)

* Suppressed due to fewer than 16 cases.

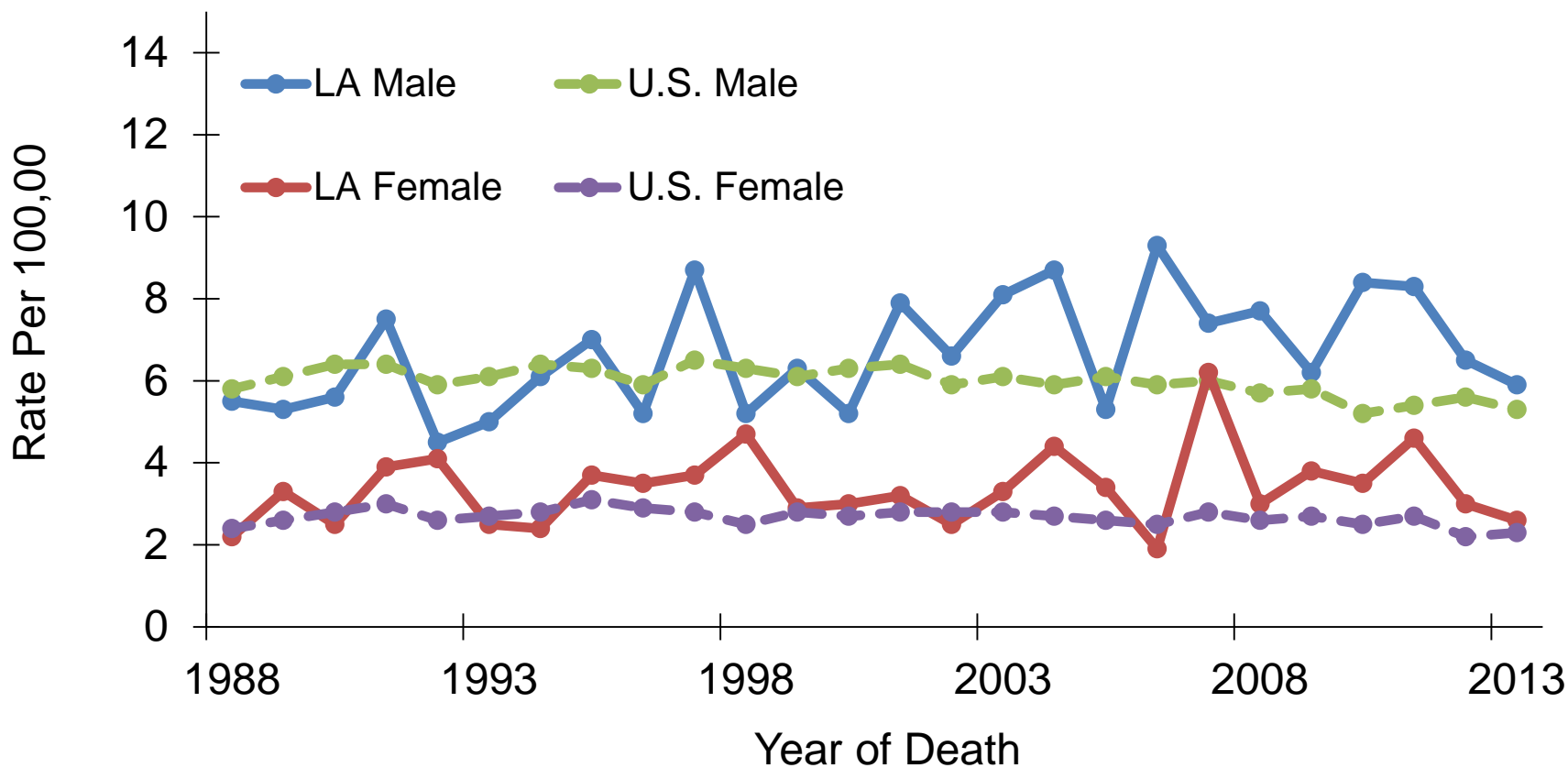
Kidney and Renal Pelvis Cancer: Trends of Mortality Rates^{1,2}, Whites, 1988-2013



¹ Age-adjusted to the 2000 U.S. standard population.

² Data source: National Center of Health Statistics (NCHS).

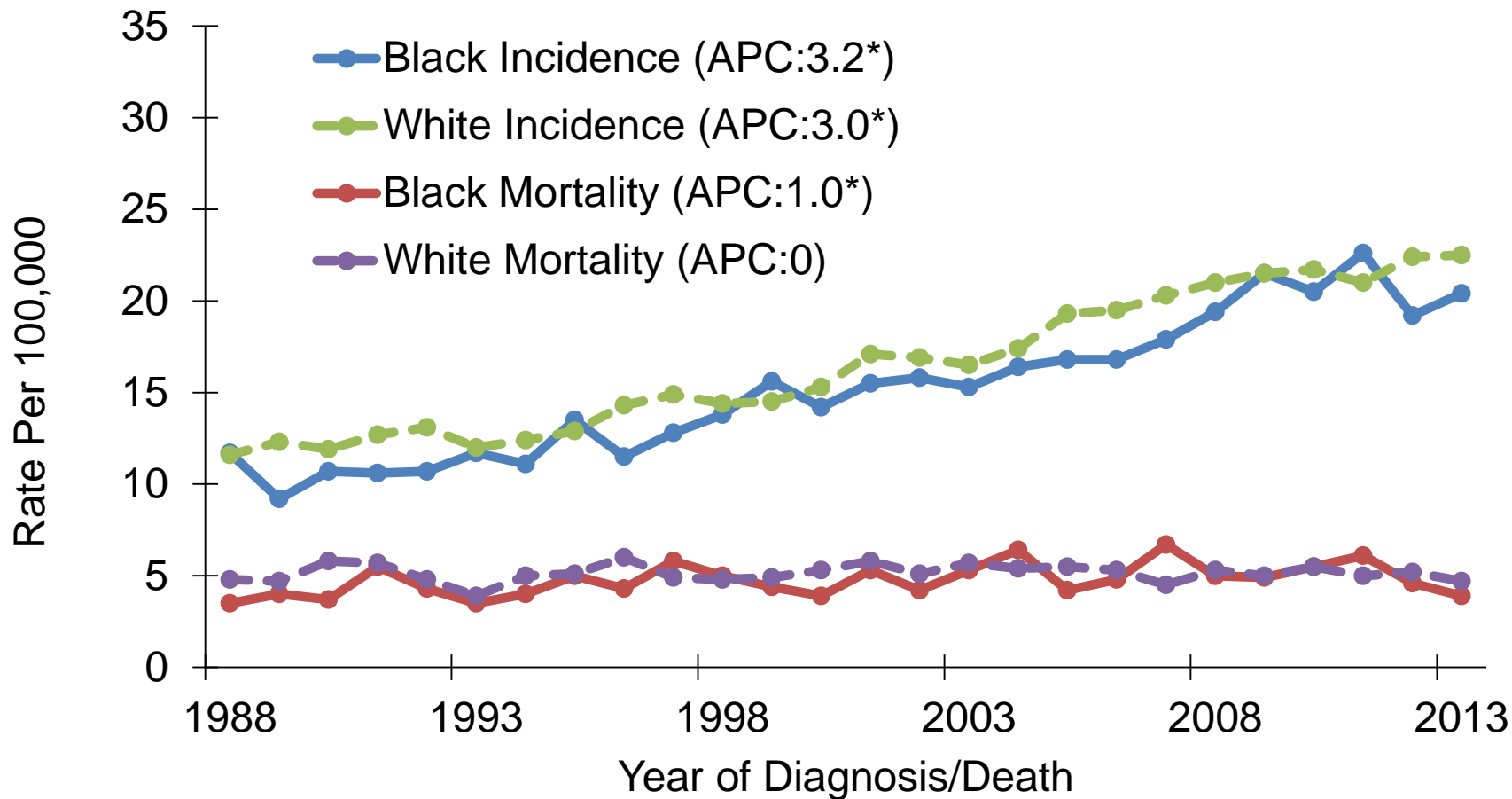
Kidney and Renal Pelvis Cancer: Trends of Mortality Rates^{1,2}, Blacks, 1988-2013



¹ Age-adjusted to the 2000 U.S. standard population.

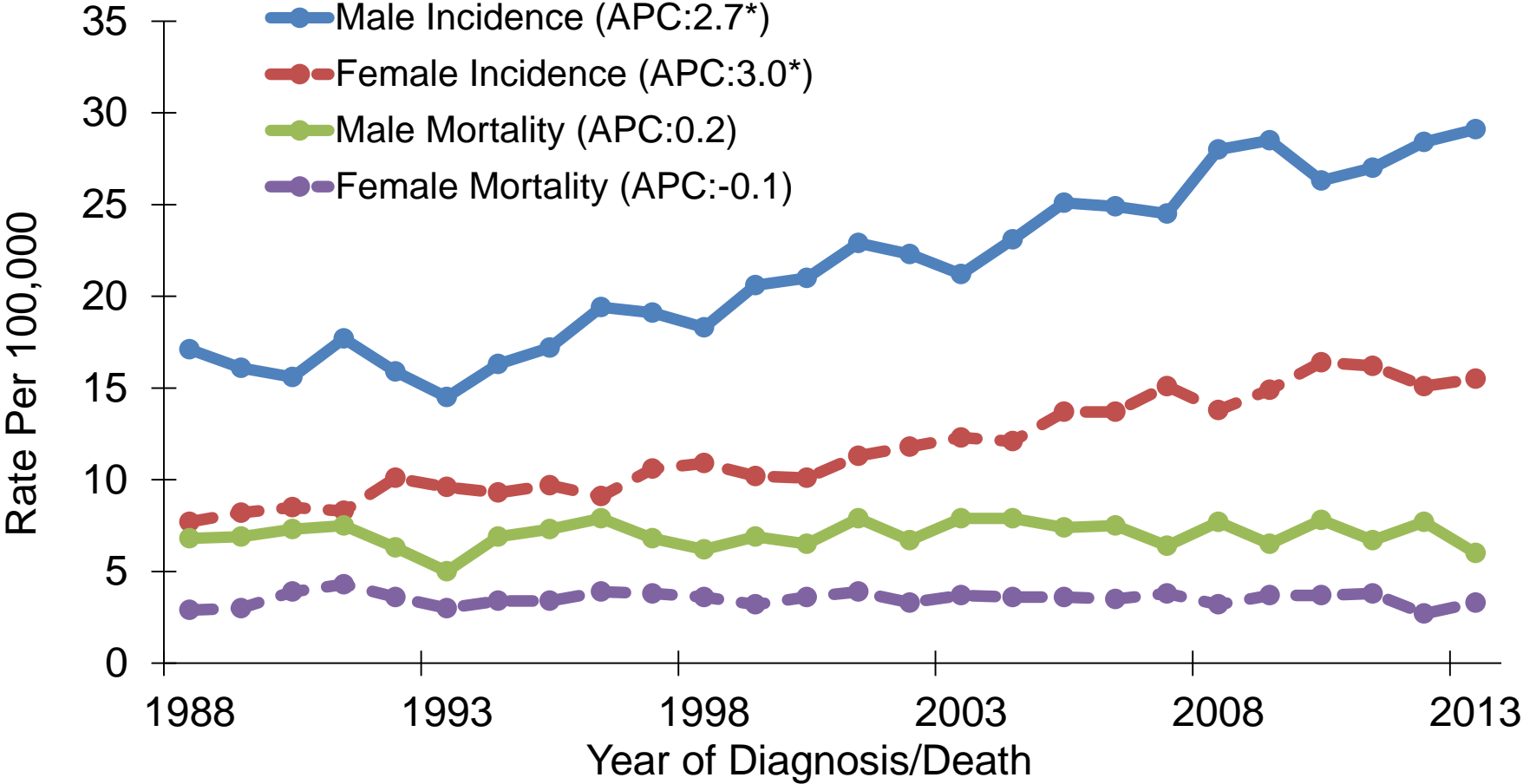
² Data source: National Center of Health Statistics (NCHS).

Kidney and Renal Pelvis Cancer: Trends of Incidence and Mortality Rates, by Race, Louisiana, 1988-2013



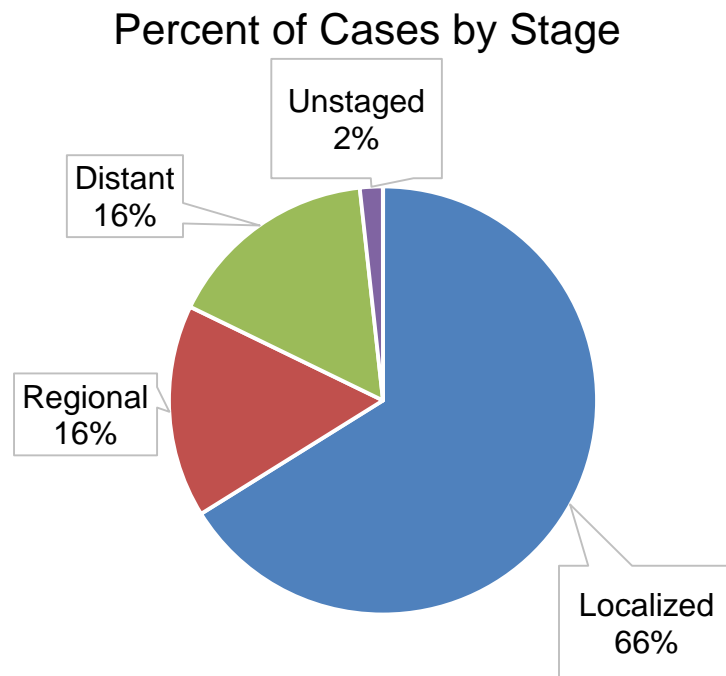
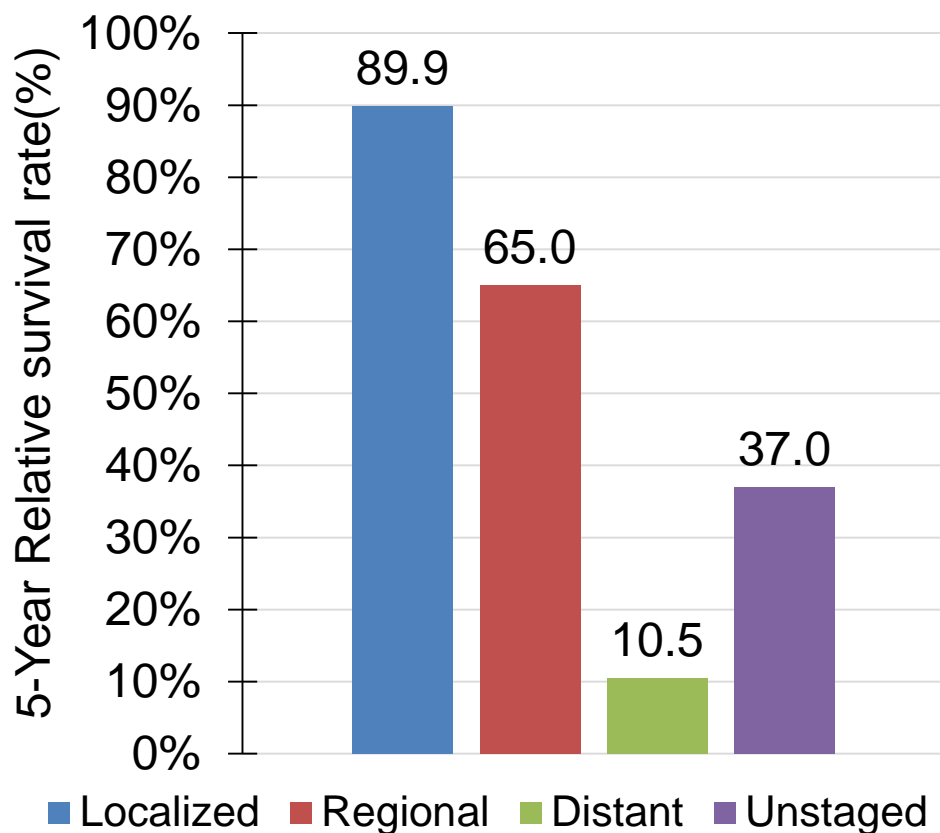
*APCs were calculated using weighted least squares method

Kidney and Renal Pelvis Cancer: Trends of Incidence and Mortality Rates, by Gender, Louisiana, 1988-2013



*APCs were calculated using weighted least squares method

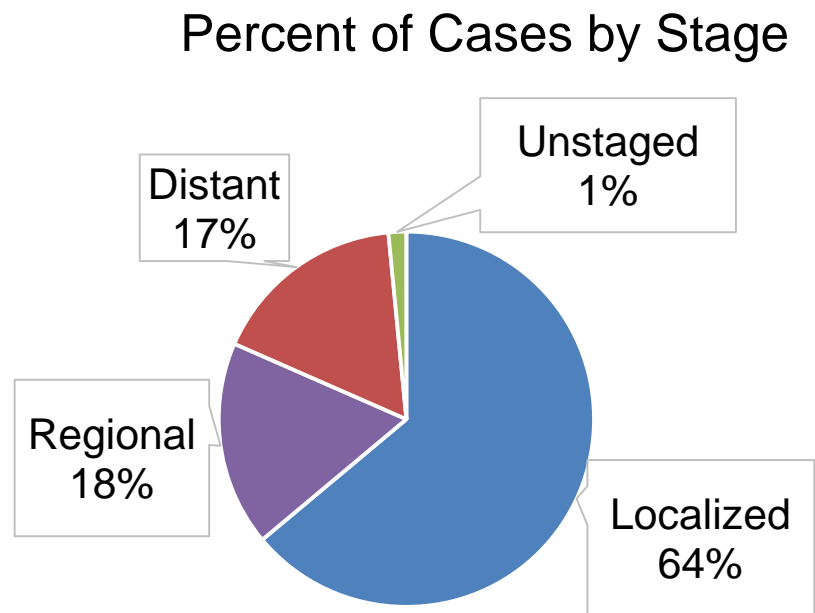
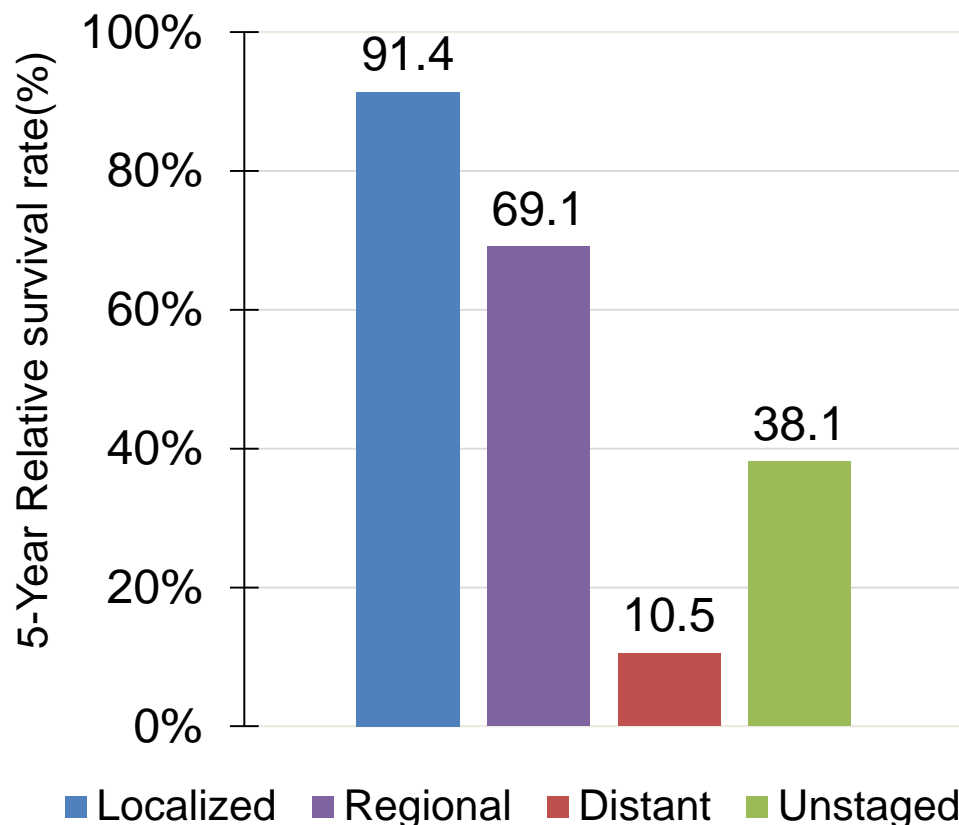
Kidney and Renal Pelvis Cancer: Louisiana 5-Year Relative Survival by Stage¹, Both Sexes, All Races, 2006-2012



¹ The stage distribution is based on Summary Stage 2000.

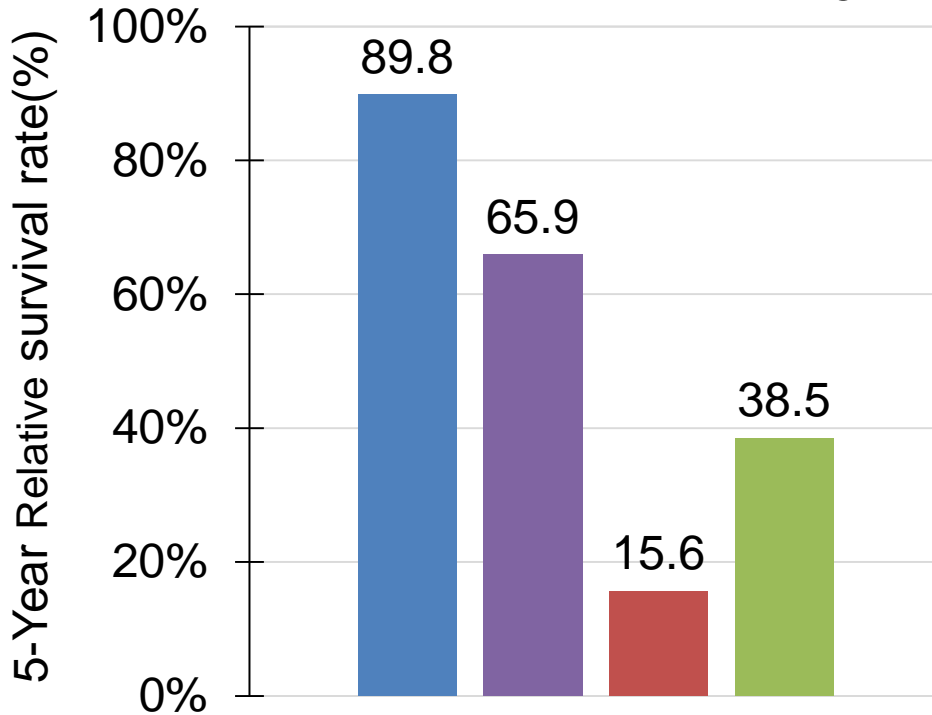
Kidney and Renal Pelvis Cancer: Louisiana

5-Year Relative Survival by Stage¹, White Males, 2006-2012

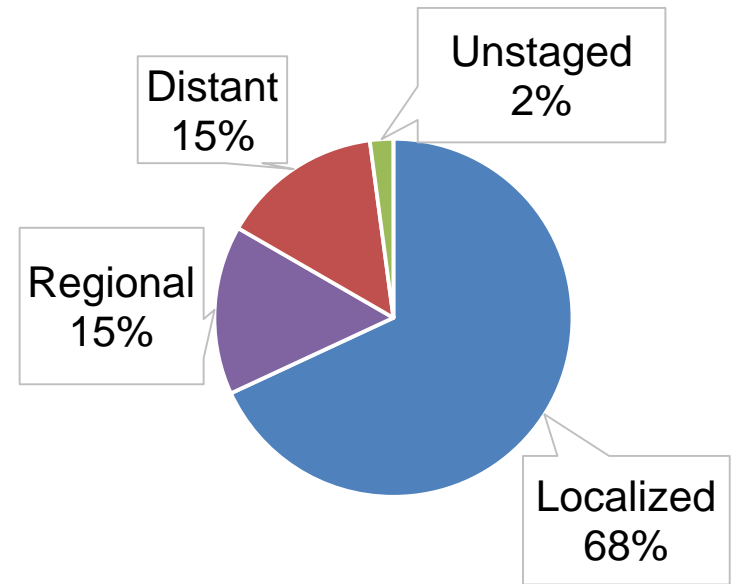


¹ The stage distribution is based on Summary Stage 2000.

Kidney and Renal Pelvis Cancer: Louisiana 5-Year Relative Survival by Stage¹, White Females, 2006-2012



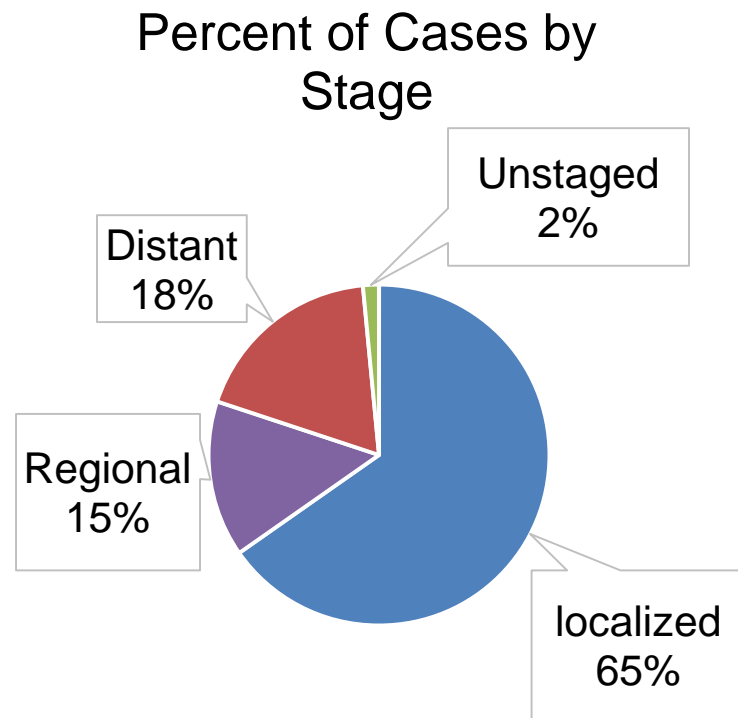
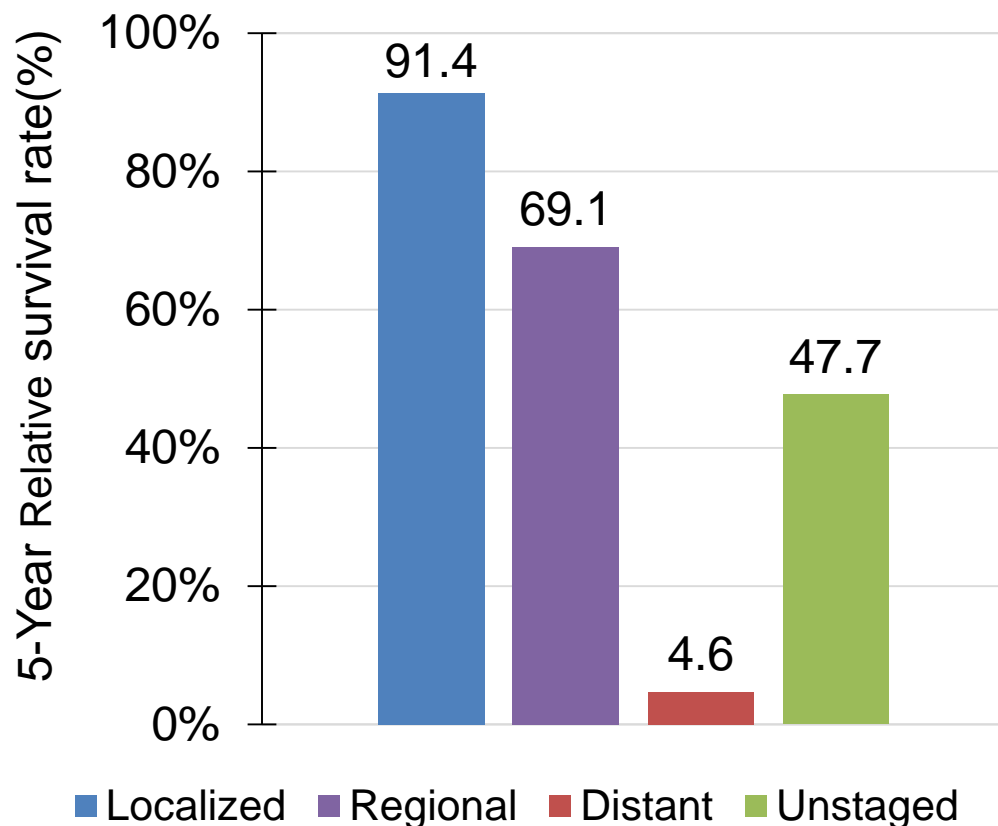
Percent of Cases by Stage



■ Localized ■ Regional ■ Distant ■ Unstaged

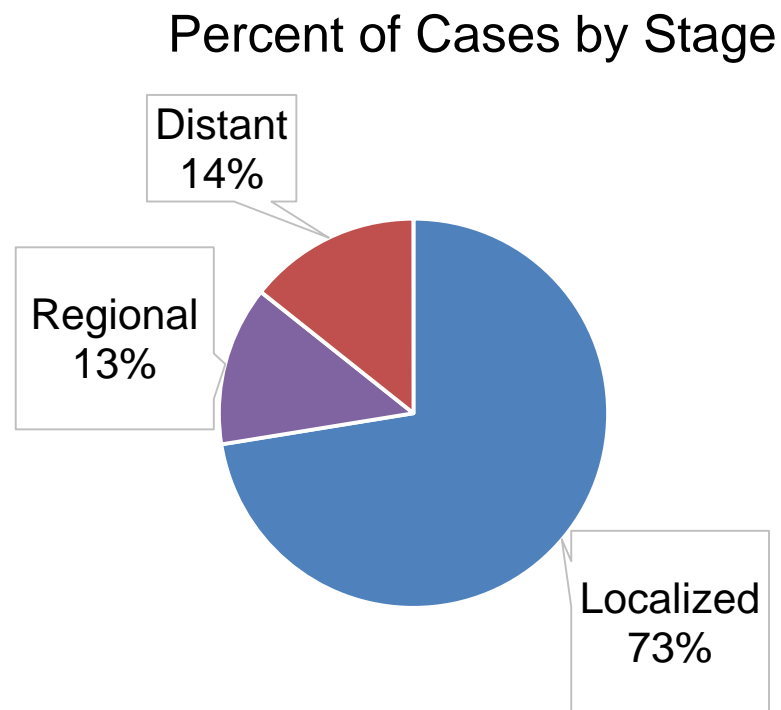
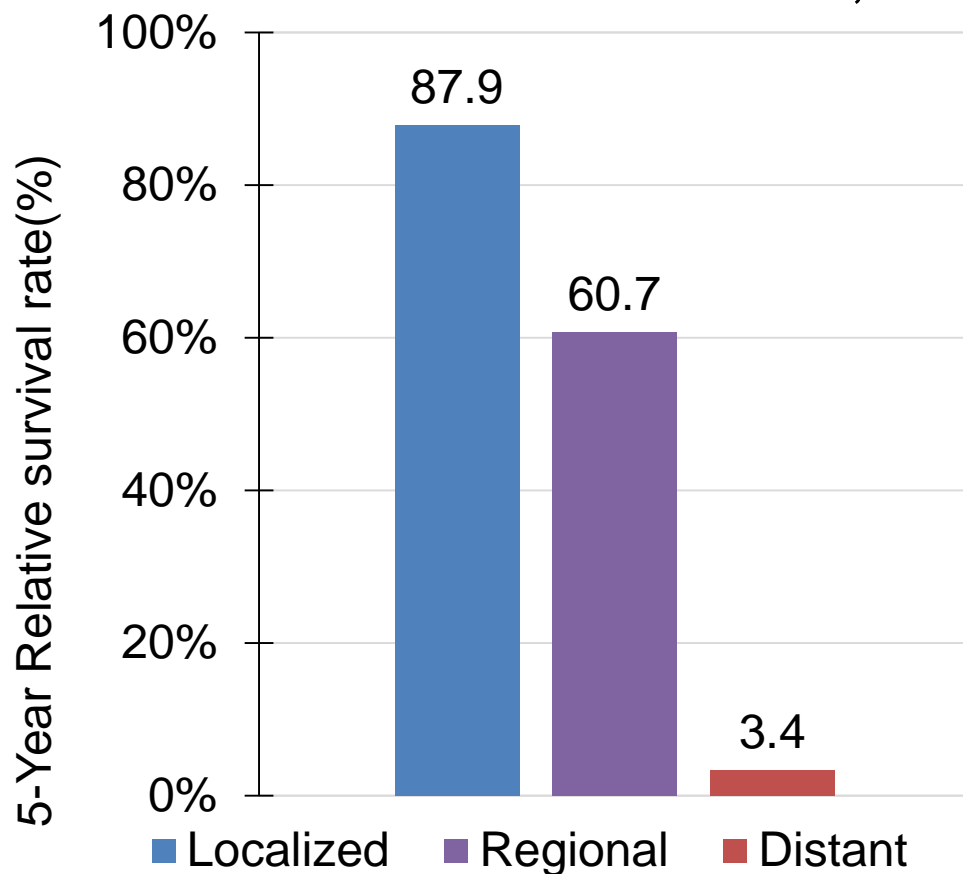
¹ The stage distribution is based on Summary Stage 2000.

Kidney and Renal Pelvis Cancer: Louisiana 5-Year Relative Survival by Stage¹, Black Males, 2006-2012



¹ The stage distribution is based on Summary Stage 2000.

Kidney and Renal Pelvis Cancer: Louisiana 5-Year Relative Survival by Stage¹, Black Females, Louisiana, 2006-2012



¹ The stage distribution is based on Derived Summary Stage 2000.

* The Unstaged 5-year relative survival could not be calculated due to lack of cases.

Data Sources

Surveillance, Epidemiology, and End Results (SEER) Program (www.seer.cancer.gov) SEER*Stat Databases, National Cancer Institute, DCCPS, Surveillance Research Program, Surveillance Systems Branch, released April 2016, based on the November 2015 submission.

For Incidence:

- Incidence - SEER 18 Regs Research Data + Hurricane Katrina Impacted Louisiana Cases, Nov 2015 Sub (2000-2013) <Katrina/Rita Population Adjustment>
- SEER*DMS - LTR 1988-2013, June 7, 2016

For Mortality:

- mortality – all COD, aggregated with States, Total U.S. (1969-2013) <Katrina/Rita Population Adjustment>

For Survival:

- Incidence - SEER 18 Regs Research Data + Hurricane Katrina Impacted Louisiana Cases, Nov 2015 Sub (1973-2013 varying)

Acknowledgements

- **Hospital cancer registries** (<http://louisianatumorregistry.lsuhs.edu/>)
- **Louisiana Cancer Registrars' Association** (<http://www.lcra-usa.org/>)
- **Physicians and staff members in:**
 - Medical records offices
 - Pathology laboratories
 - Physician offices and clinics
 - Hospice programs and nursing homes
- **Regional and central offices of the Louisiana Tumor Registry**
(<http://louisianatumorregistry.lsuhs.edu/regionalregistries.html>)
- **School of Public Health, LSU Health Sciences Center–New Orleans**
- **Louisiana Cancer and Lung Trust Fund Board**
- **Coroners' offices**

Sources of LTR Funding

- National Cancer Institute, SEER Program
- National Program of Cancer Registries, CDC
- Louisiana Health Care Services Division

Editors

Shuang Yang, MPH

Meichin Hsieh, PhD, MSPH, CTR

Lauren Maniscalco, MPH

Xiaocheng Wu, MD, MPH, CTR

Contributors

Xiangrong Li, MD, MSPH

Brent Mumphrey, BS

Tina Lefante, MPH

Lisa Pareti, BS, RHIT, CTR

Yong Yi, PhD, MS

Questions?

Contact:

LTR-info@lsuhsc.edu

or

504/568-5757