

Louisiana Cancer Facts & Figures, Colon and Rectum Cancer, 2016

Louisiana Tumor Registry

February, 2017

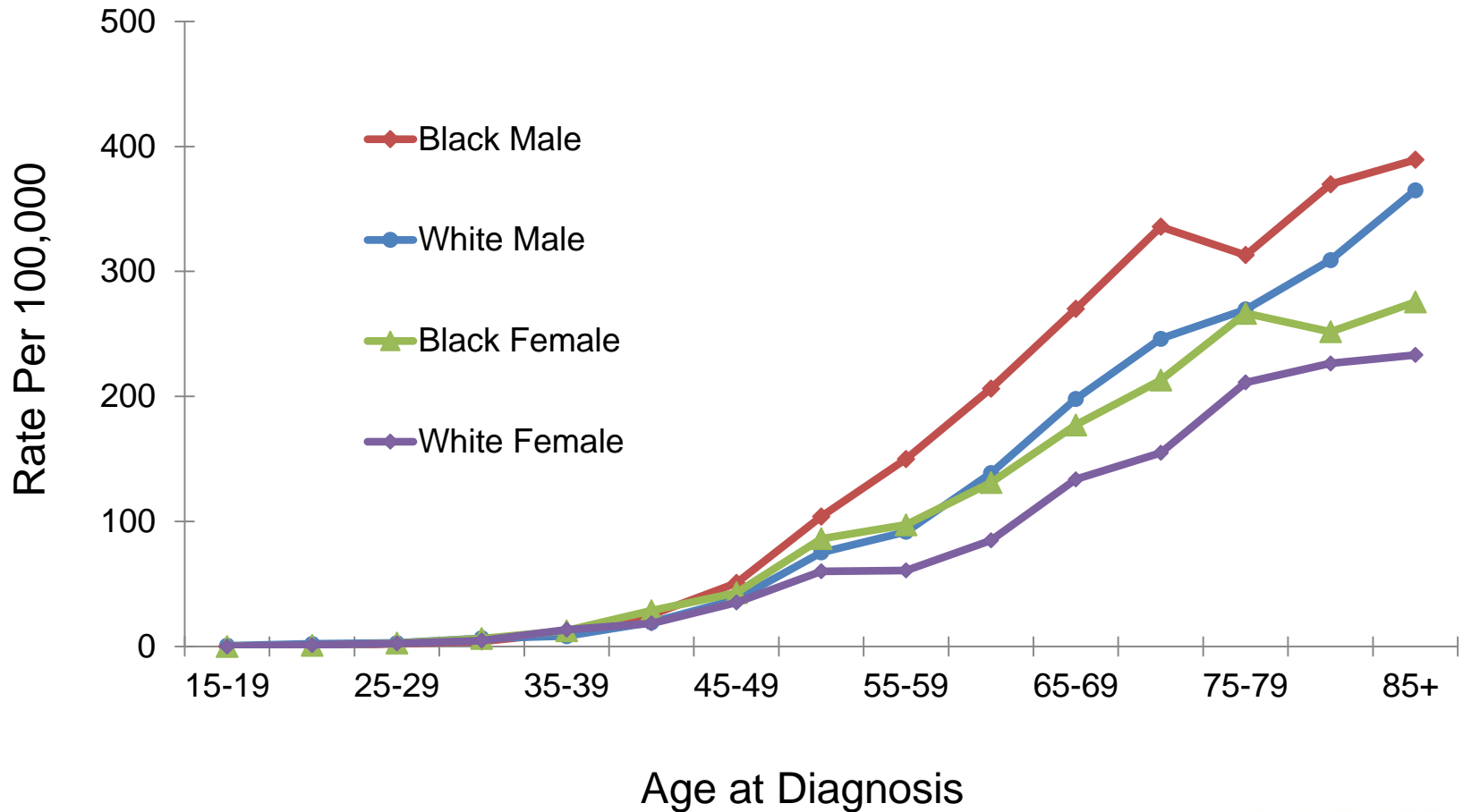
Colon and Rectum Cancer

- Colon and rectum cancer was the 4th most common cancer and the 2nd leading cause of cancer death in Louisiana from 2009 to 2013.¹
- Between 2009 and 2013, the average annual incidence rate of colon and rectum cancer in Louisiana was the 3rd highest and the mortality rate was the 4th highest in the U.S.¹
- About 2,170 new colon and rectum cancers are expected to be diagnosed and about 790 patients are expected to die of colon and rectum cancer in Louisiana in 2016 ².

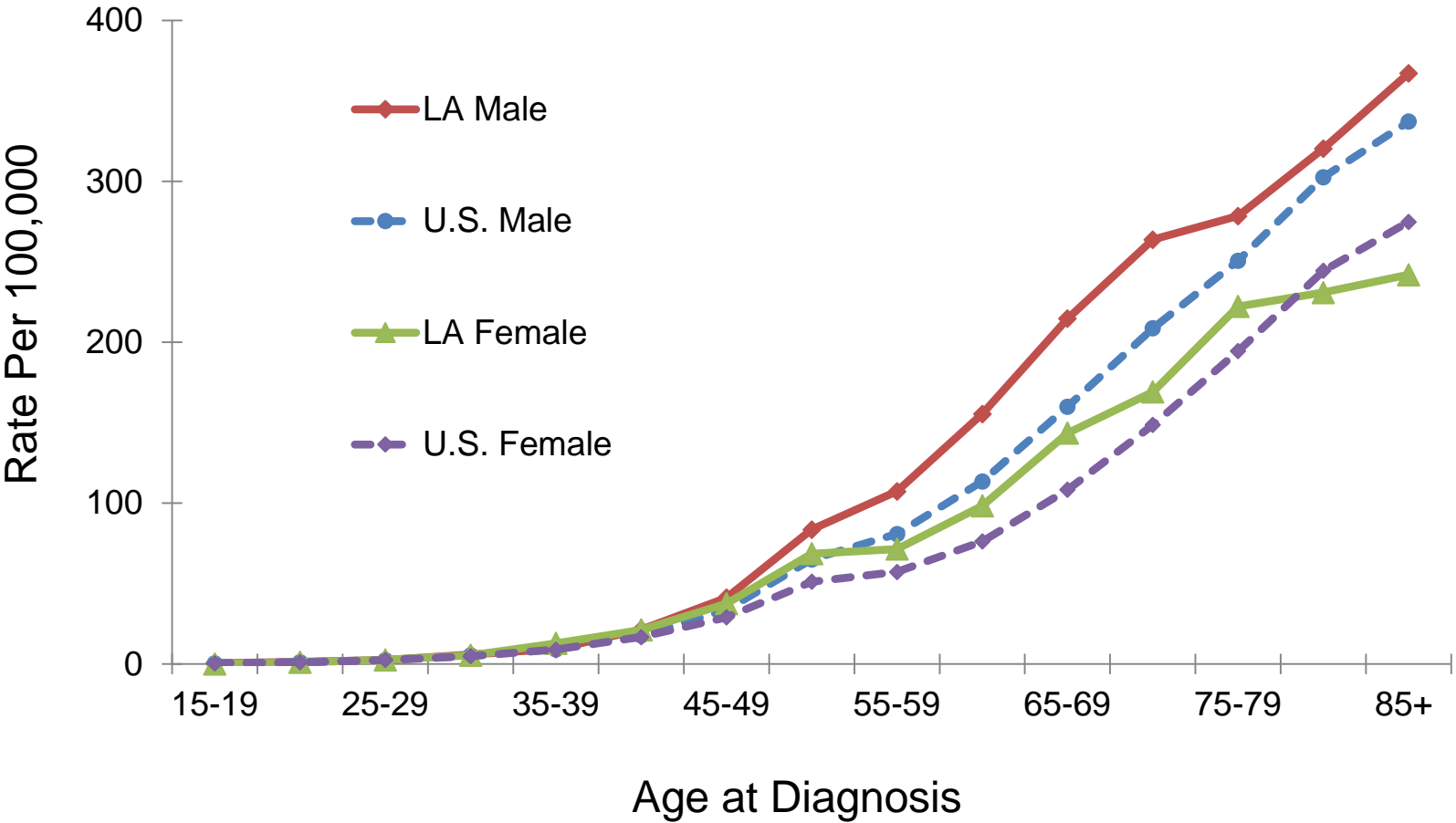
1. Data source: NCI state cancer profile.

2. Data source: American Cancer Society, Cancer Facts & Figures 2016.

Colon and Rectum Cancer: Age-Specific Incidence Rates, Louisiana, 2009-2013

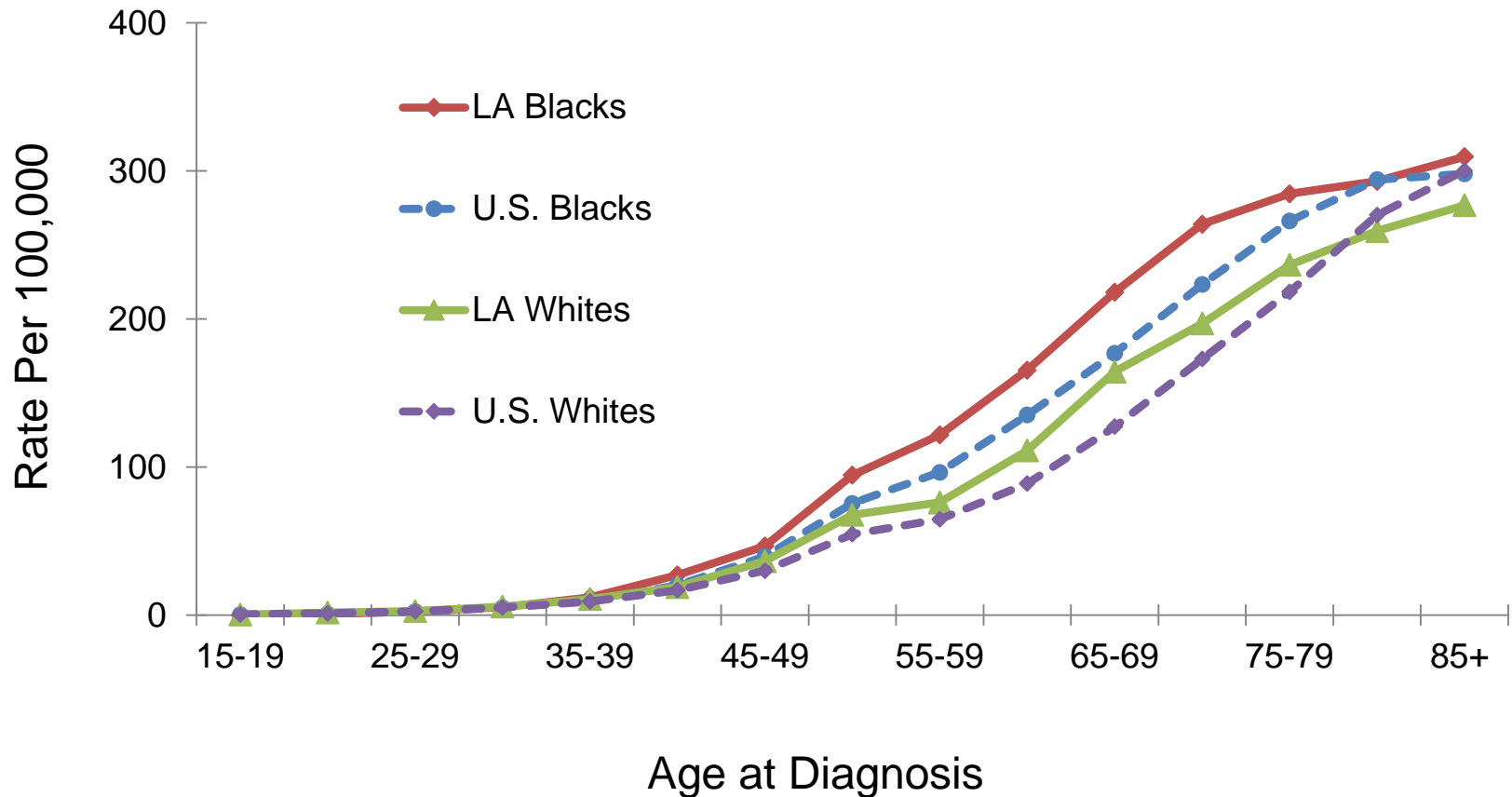


Colon and Rectum Cancer: Age-Specific Incidence Rates by Gender, 2009-2013



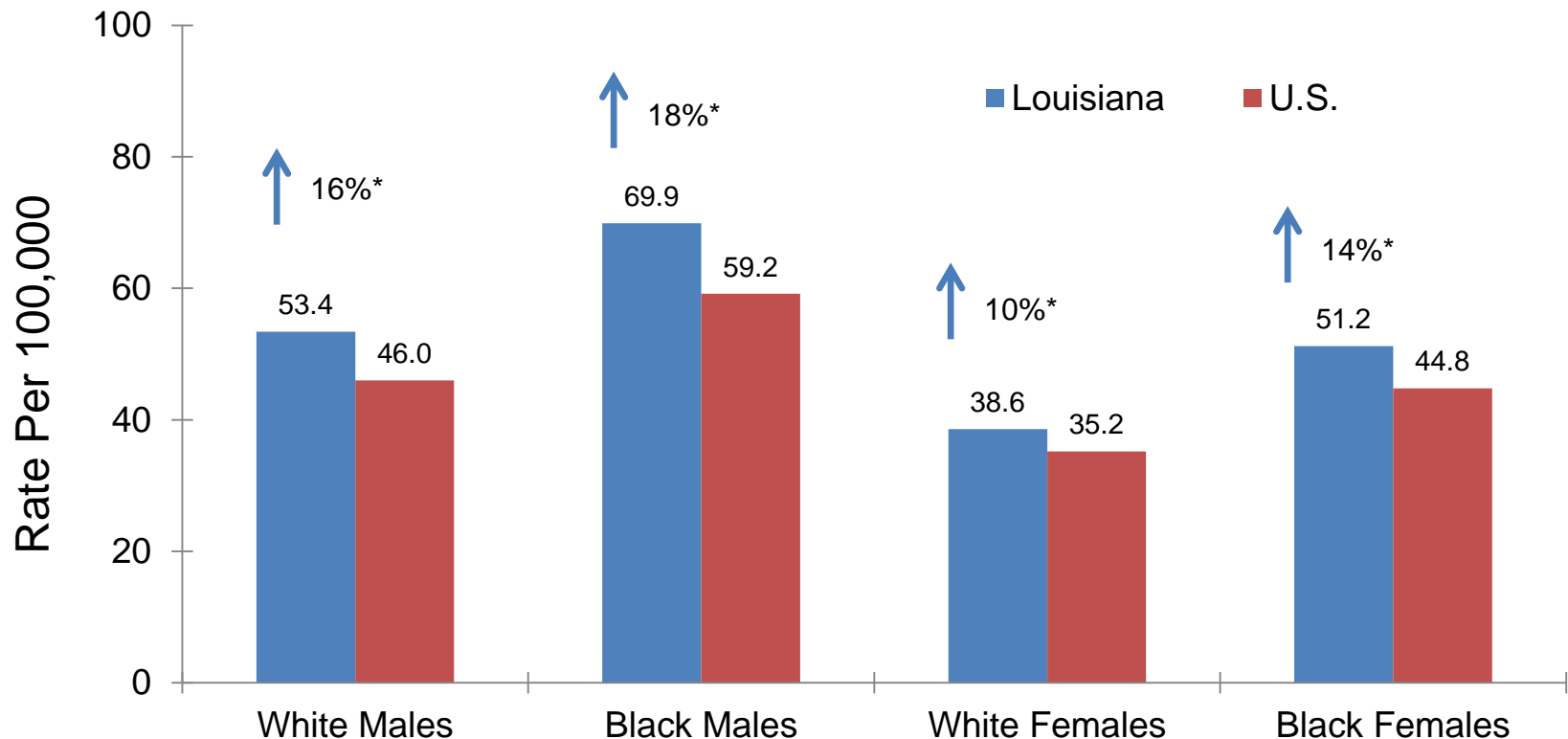
U.S. data source: 18 SEER registries.

Colon and Rectum Cancer: Age-Specific Incidence Rates by Race, 2009-2013



U.S. data source: 18 SEER registries.

Colon and Rectum Cancer: Incidence Rates^{1,2} 2009-2013

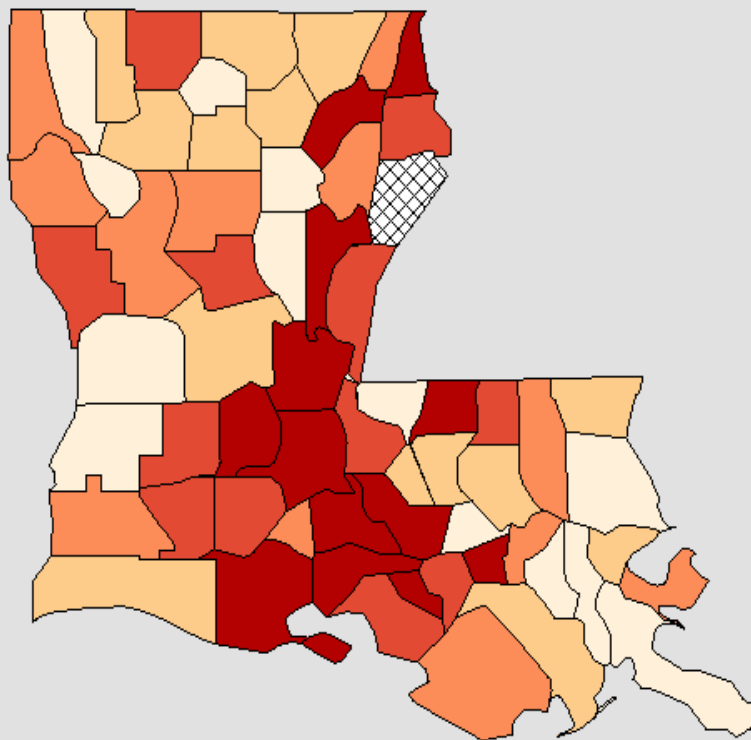


¹ Age-adjusted to the 2000 U.S. standard population.

² U.S. Incidence data source: 18 SEER registries.

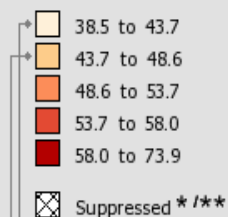
* Incidence rate of Louisiana is significantly different from that of the U.S.

Incidence Rates[†] for Louisiana
Colon & Rectum, 2009 - 2013
All Races (includes Hispanic), Both Sexes, All Ages



Age-Adjusted
 Annual Incidence Rate
 (Cases per 100,000)

[Quantile Interval](#)

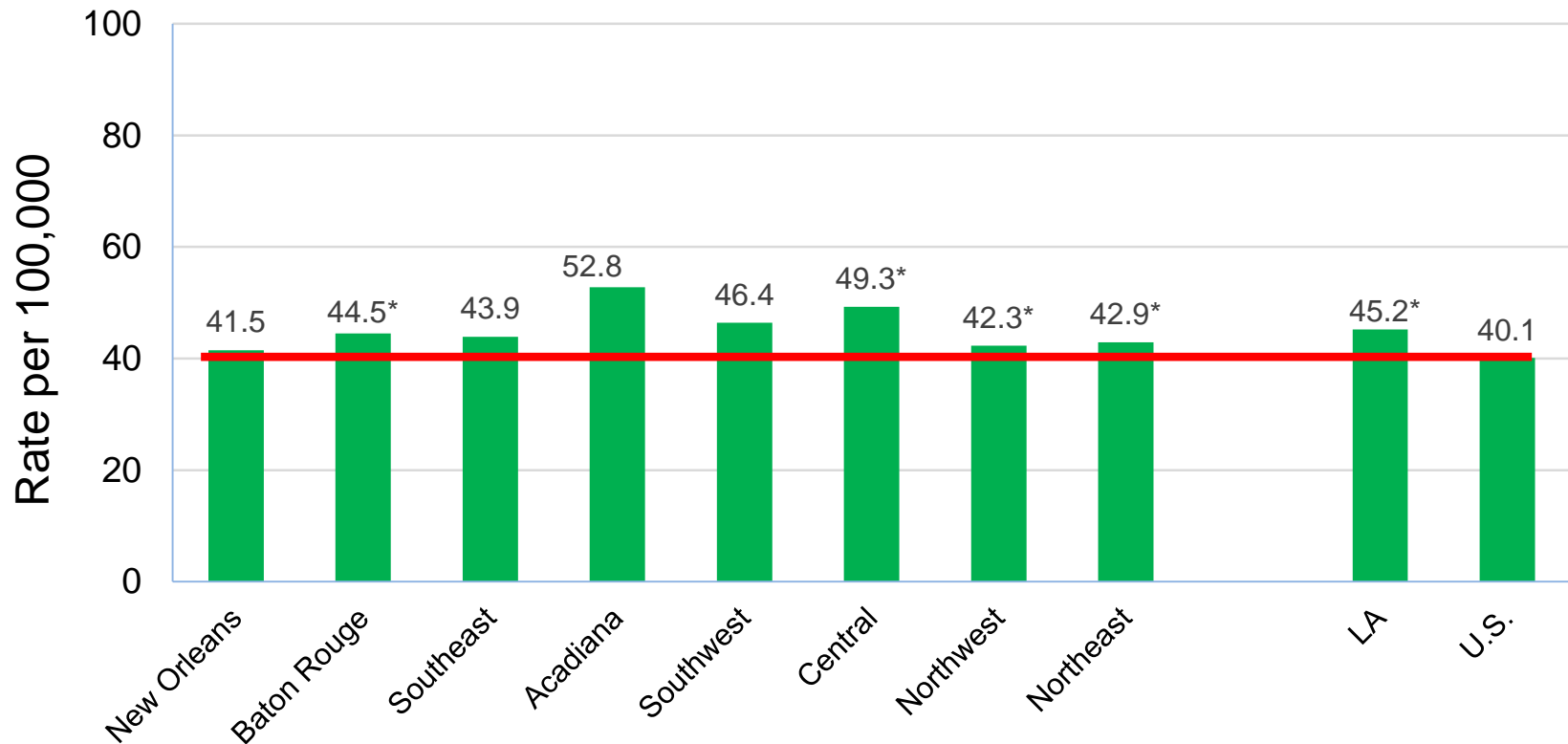


US (SEER + NPCR)
 Rate (95% C.I.)
 40.6 (40.5 - 40.7)

Louisiana
 Rate (95% C.I.)
 48.6 (47.7 - 49.5)

Notes:
 Created by statecancerprofiles.cancer.gov on 09/21/2016 5:07 pm.

Colon and Rectum Cancer Incidence^{1,2} by Region: Louisiana, Whites, 2009-2013

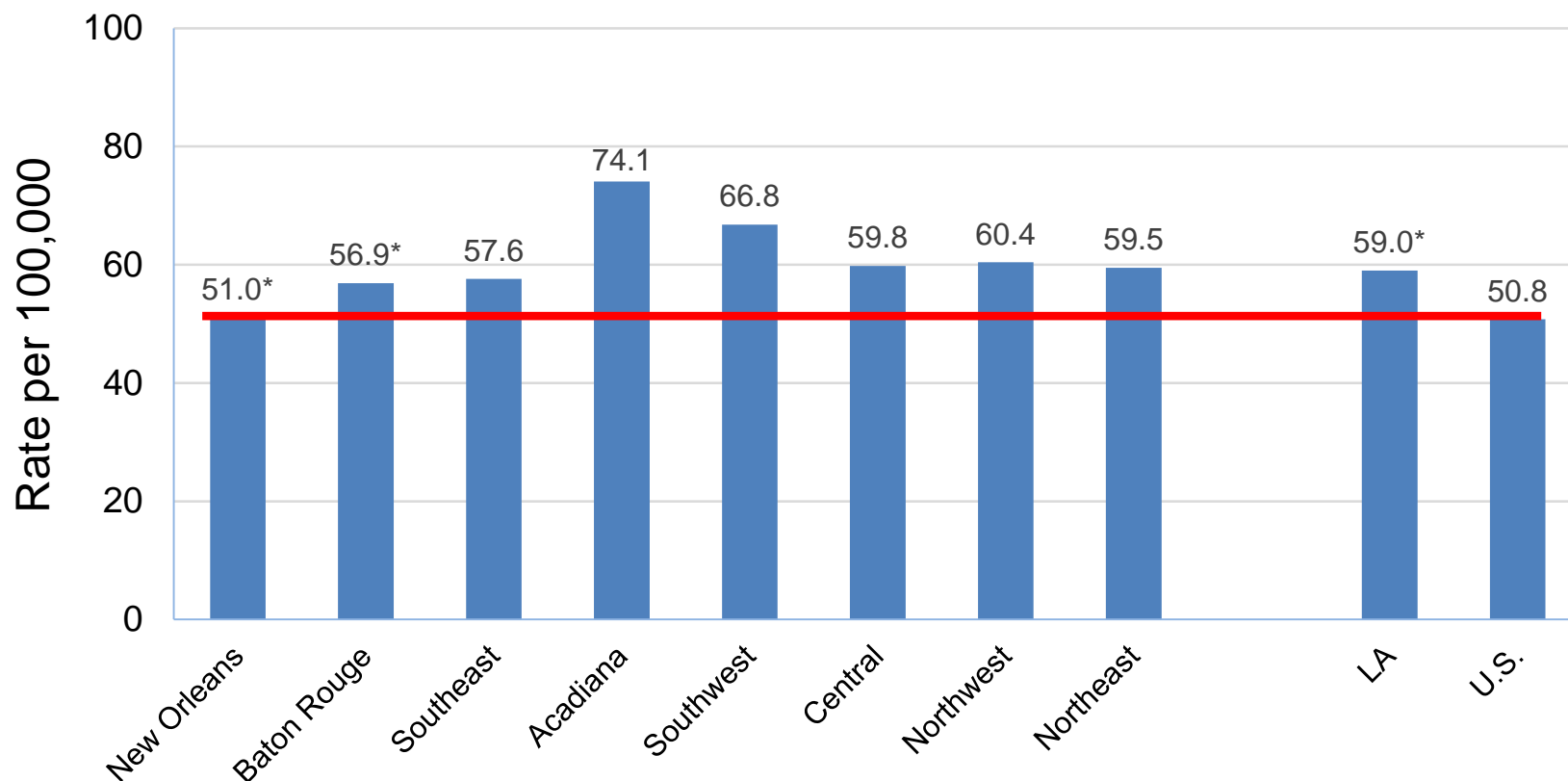


¹ Age-adjusted to the 2000 U.S. standard population.

² Data source for U.S. was the 18 SEER registries.

* Incidence rate of regions/Louisiana is significantly different from that of the U.S.

Colon and Rectum Cancer Incidence^{1,2} by Region: Louisiana, Blacks, 2009-2013

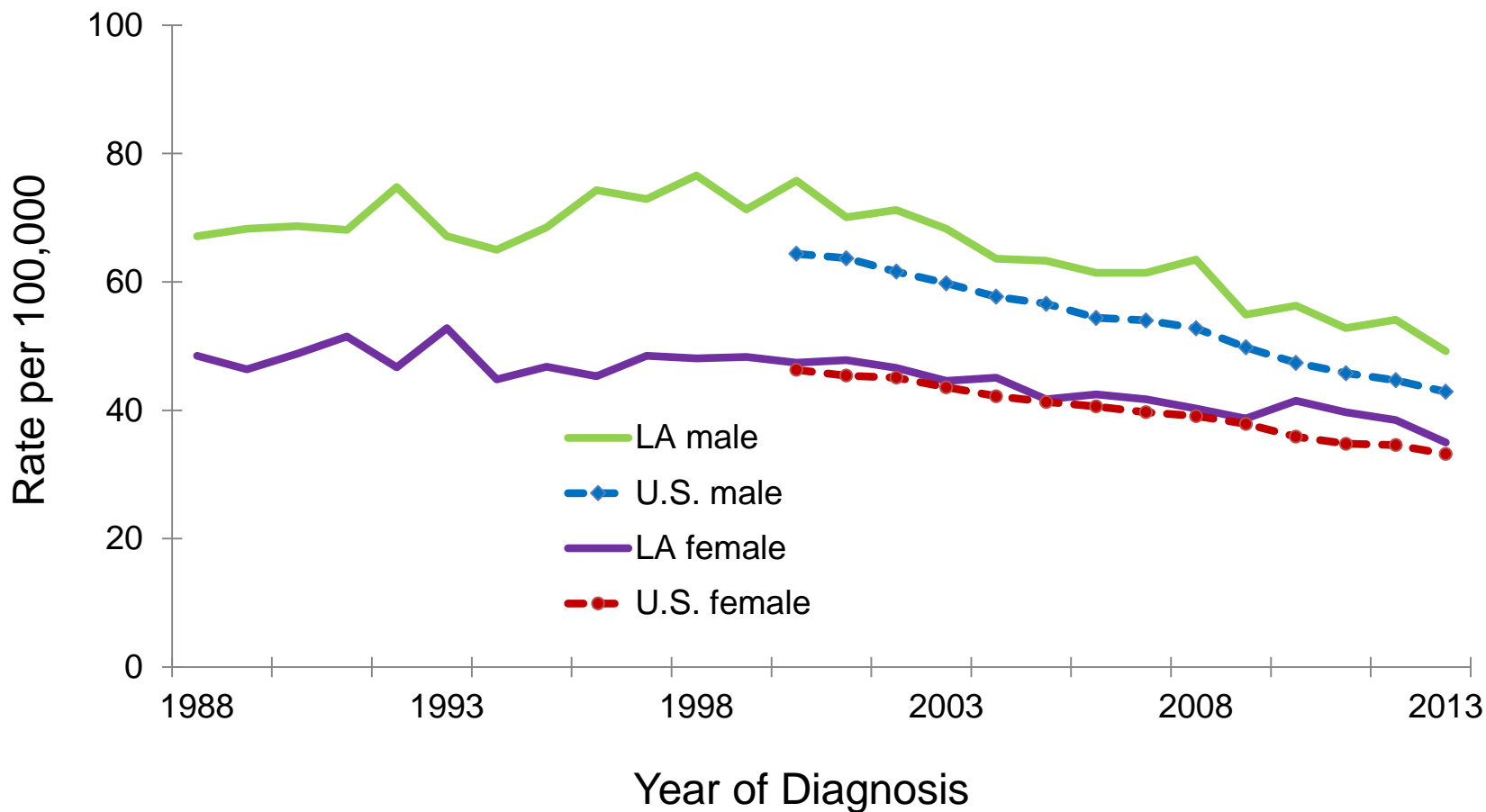


¹ Age-adjusted to the 2000 U.S. standard population.

² Data source for U.S. was the 18 SEER registries.

* Incidence rate of regions/Louisiana is significantly different from that of U.S.

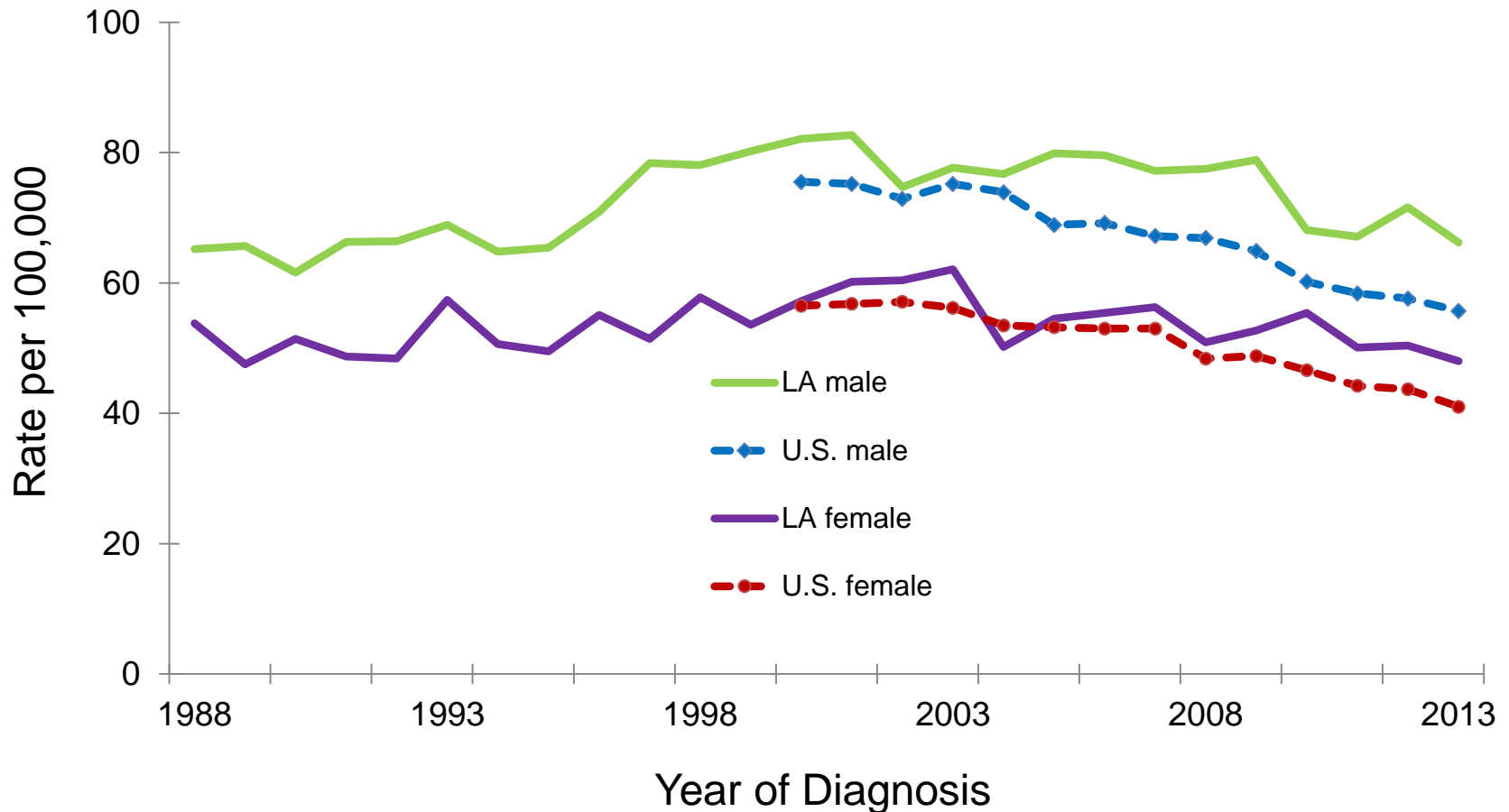
Colon and Rectum Cancer: Trends of Incidence Rates^{1,2}, Whites, 1988-2013



¹ Age-adjusted to the 2000 U.S. standard population.

² U.S. data source: 18 SEER registries.

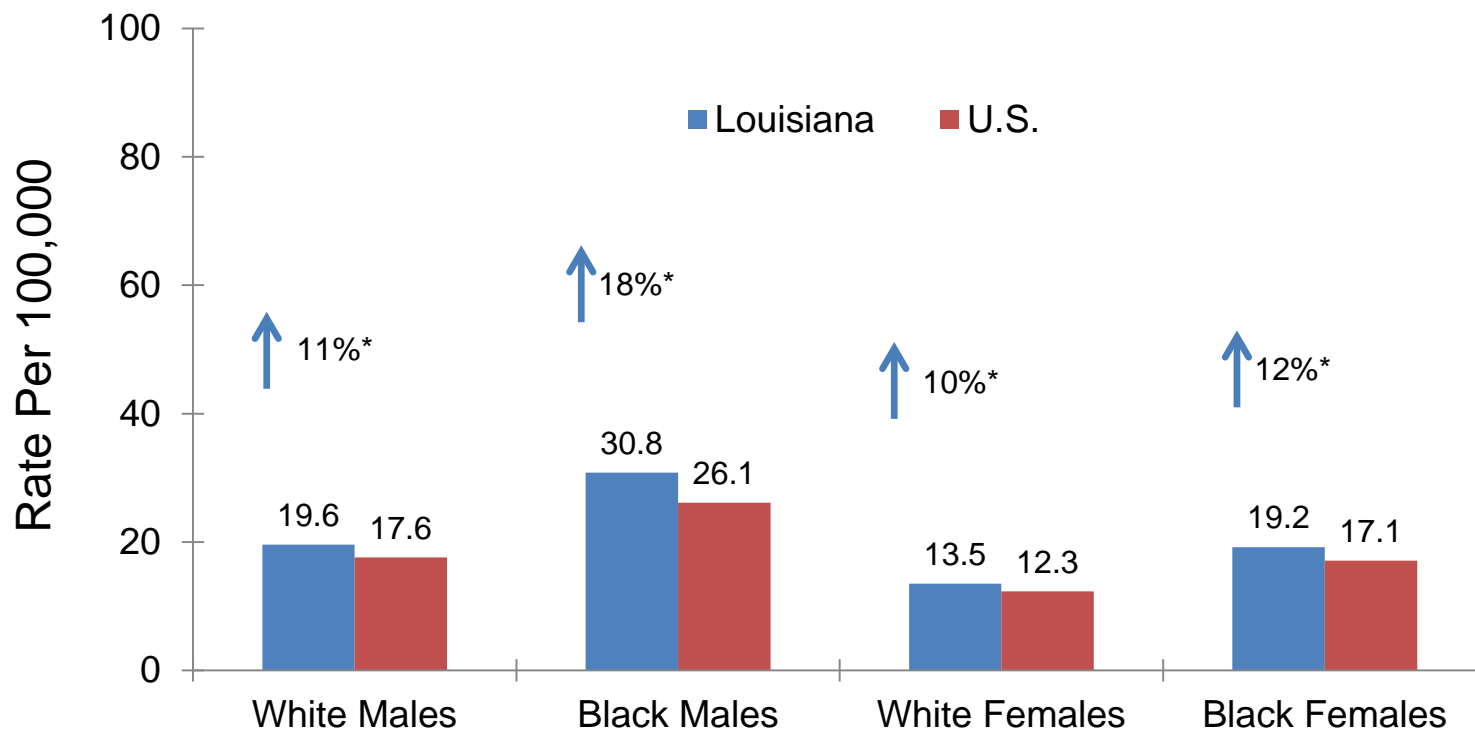
Colon and Rectum Cancer: Trend of Incidence Rates^{1,2}, Blacks 1988-2013



¹ Age-adjusted to the 2000 U.S. standard population.

² U.S. data source: 18 SEER registries.

Colon and Rectum Cancer: Mortality Rates¹ Louisiana vs. U.S.,² 2009-2013

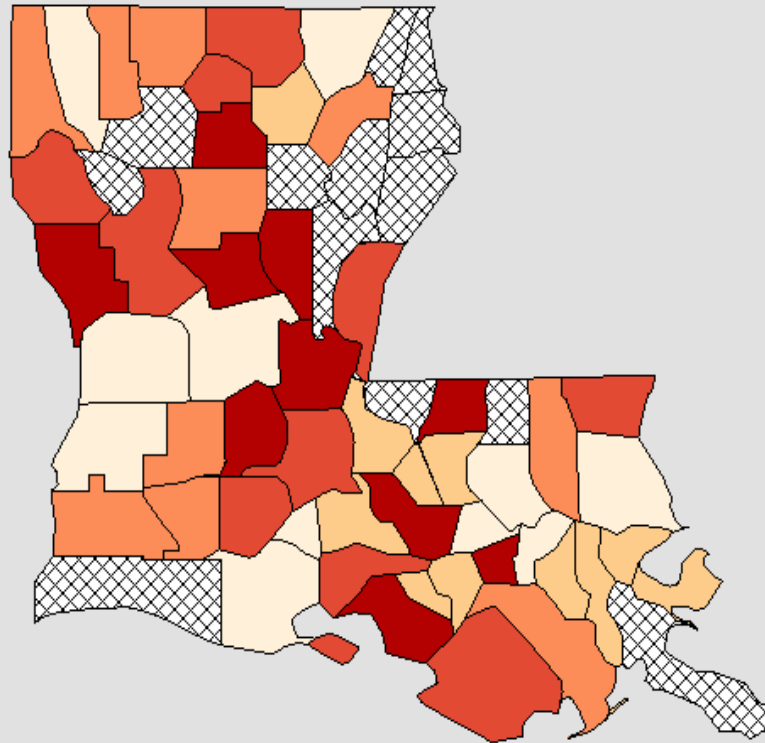


¹ Age-adjusted to the 2000 U.S. standard population.

² Mortality data source was National Center of Health Statistics (NCHS).

* Mortality rate of Louisiana is significantly different from that of the U.S.

Death Rates for Louisiana
Colon & Rectum, 2009 - 2013
All Races (includes Hispanic), Both Sexes, All Ages



Age-Adjusted
 Annual Death Rate
 (Deaths per 100,000)

[Quantile Interval](#)

- 14.1 to 16.0
- 16.0 to 18.4
- 18.4 to 21.1
- 21.1 to 22.6
- 22.6 to 32.2

Suppressed*

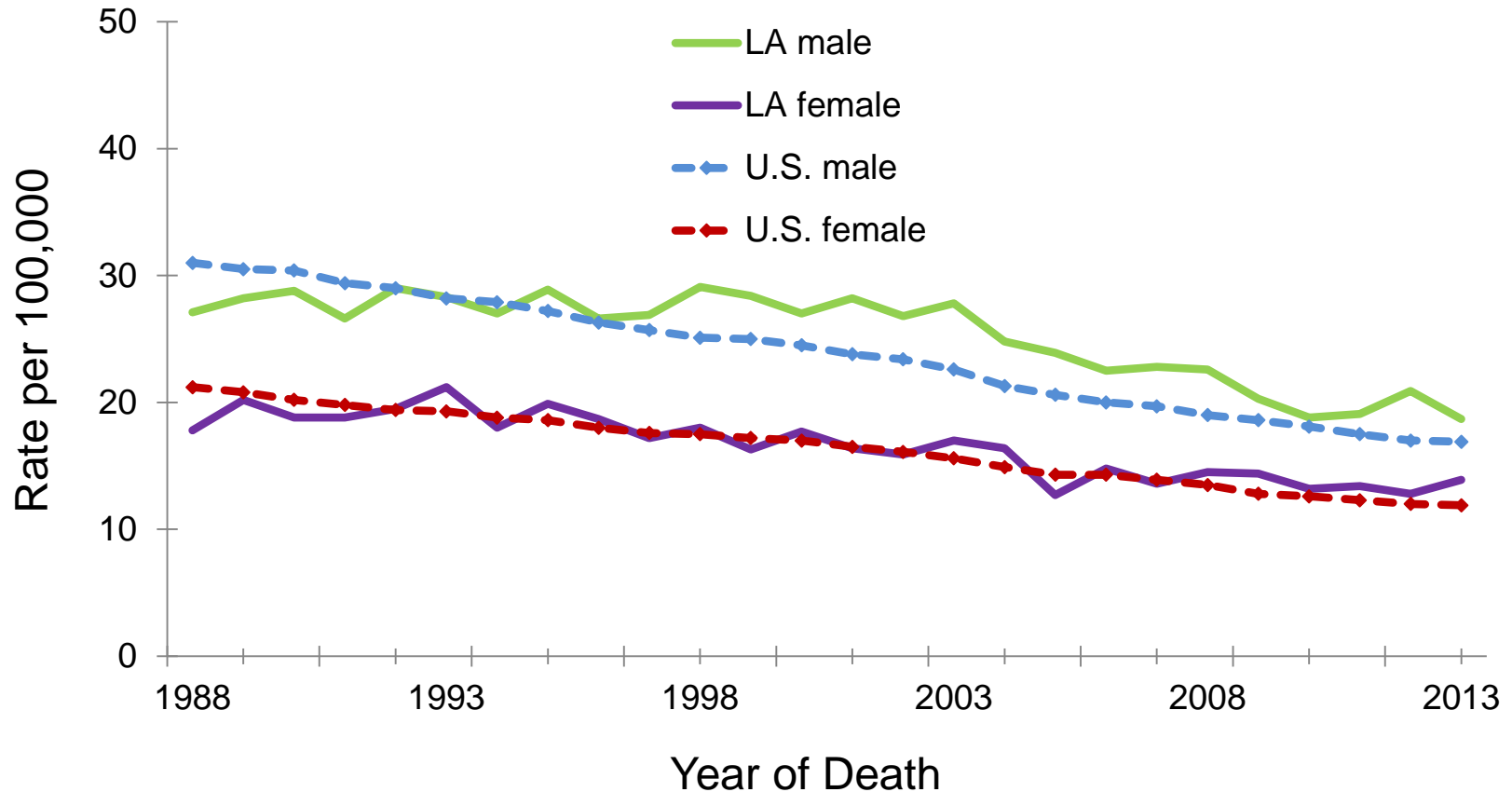
United States
 Rate (95% C.I.)
 15.1 (15.0 - 15.2)

Louisiana
 Rate (95% C.I.)
 18.1 (17.5 - 18.6)

Healthy People 2020
 Goal C-5
 14.5

Notes:
 Created by statecancerprofiles.cancer.gov on 09/21/2016 5:09 pm.

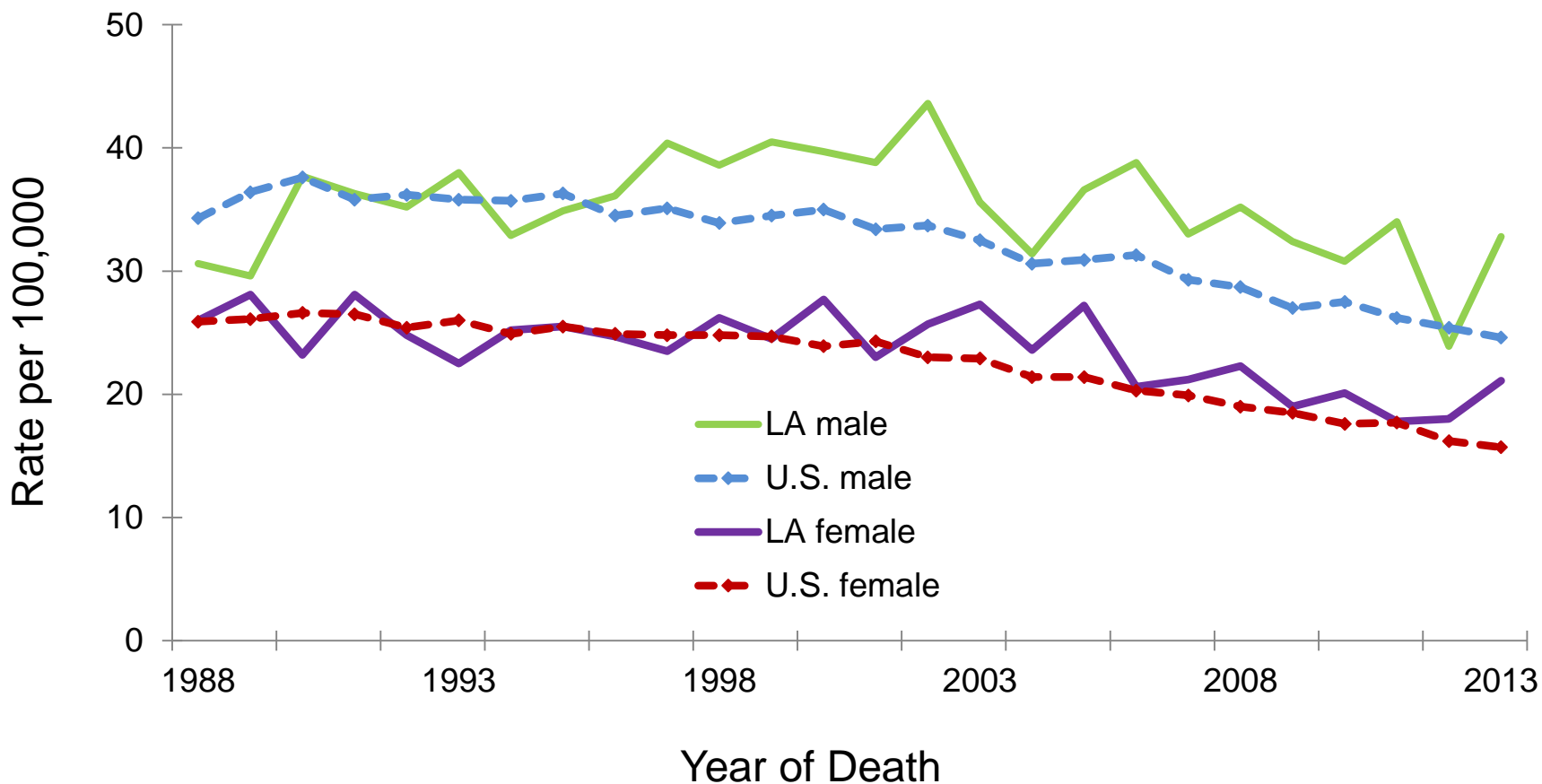
Colon and Rectum Cancer: Trends of Mortality Rates^{1,2}, Whites, 1988-2013



¹ Age-adjusted to the 2000 U.S. standard population.

² Data source: National Center of Health Statistics (NCHS).

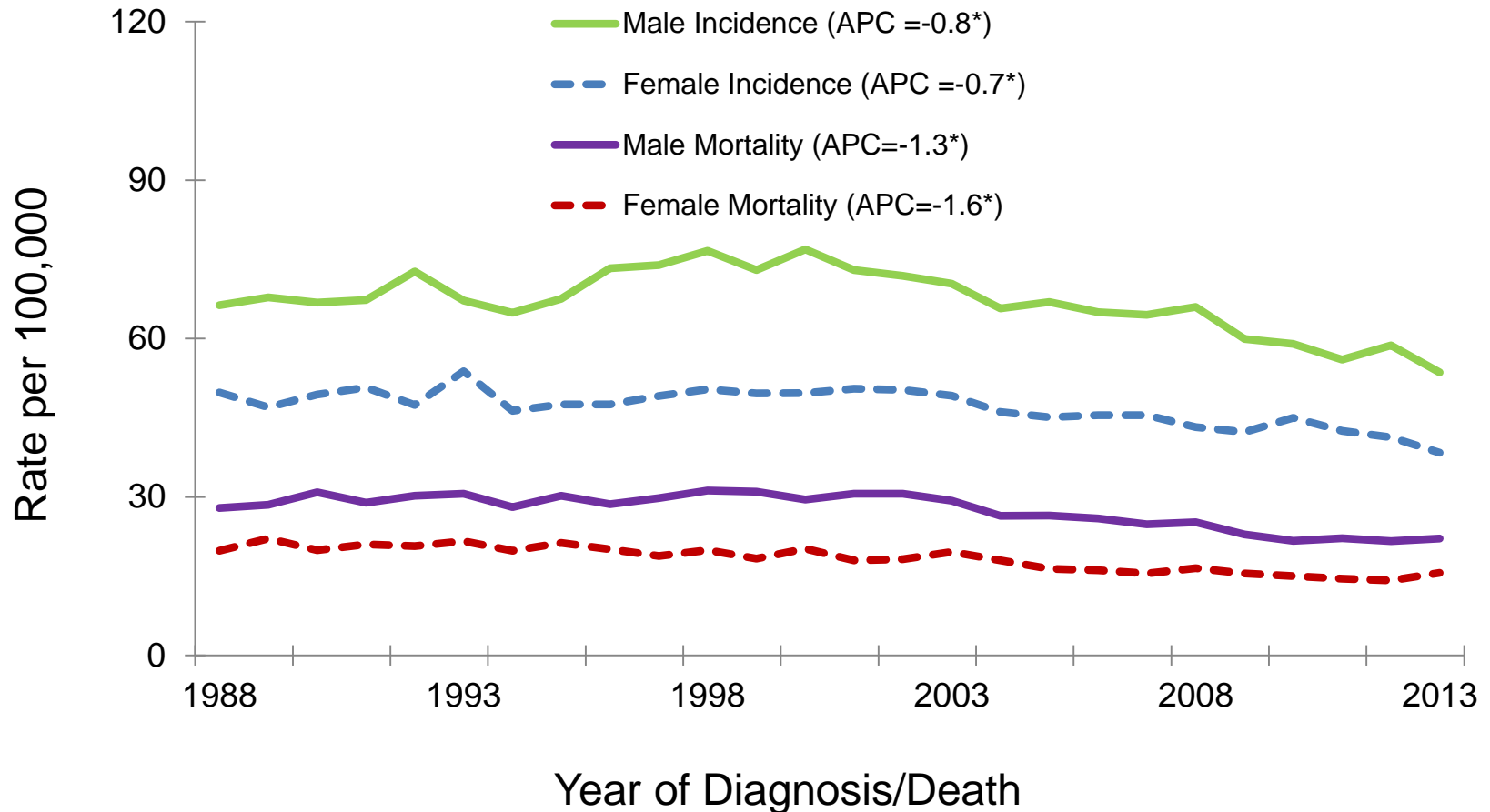
Colon and Rectum Cancer: Trends of Mortality Rates^{1,2}, Blacks, 1988-2013



¹ Age-adjusted to the 2000 U.S. standard population.

² Data source: National Center of Health Statistics (NCHS).

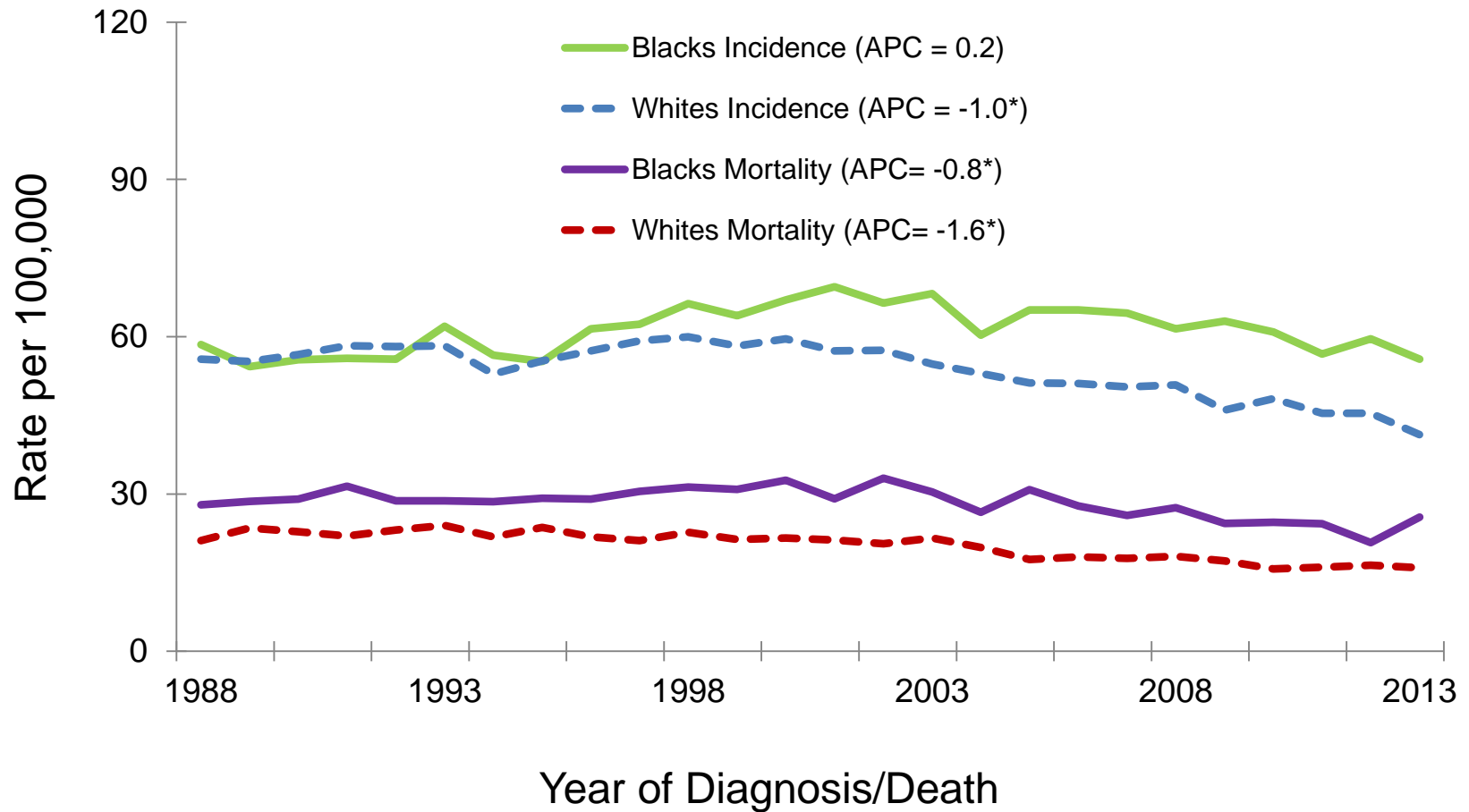
Colon and Rectum: Louisiana 1988-2013: Trends of Incidence and Mortality Rates by Gender



*APCs were calculated using weighted least squares method

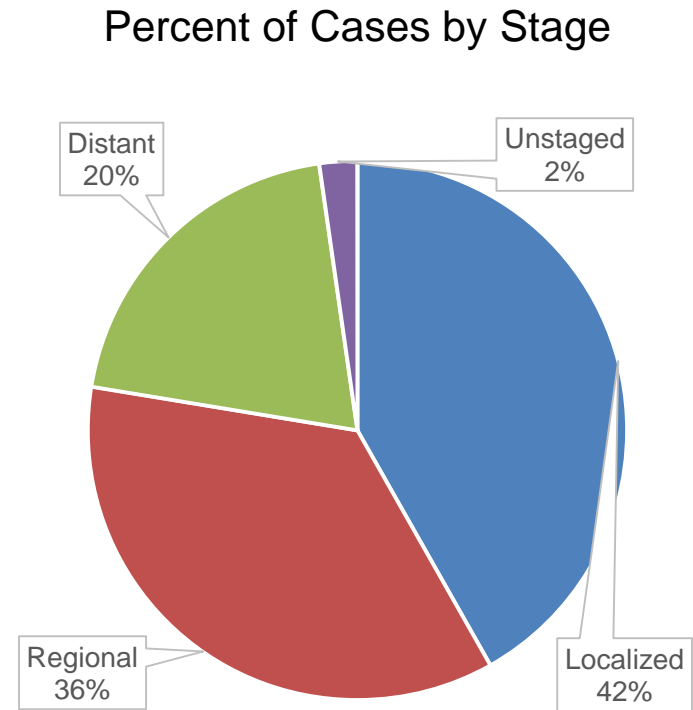
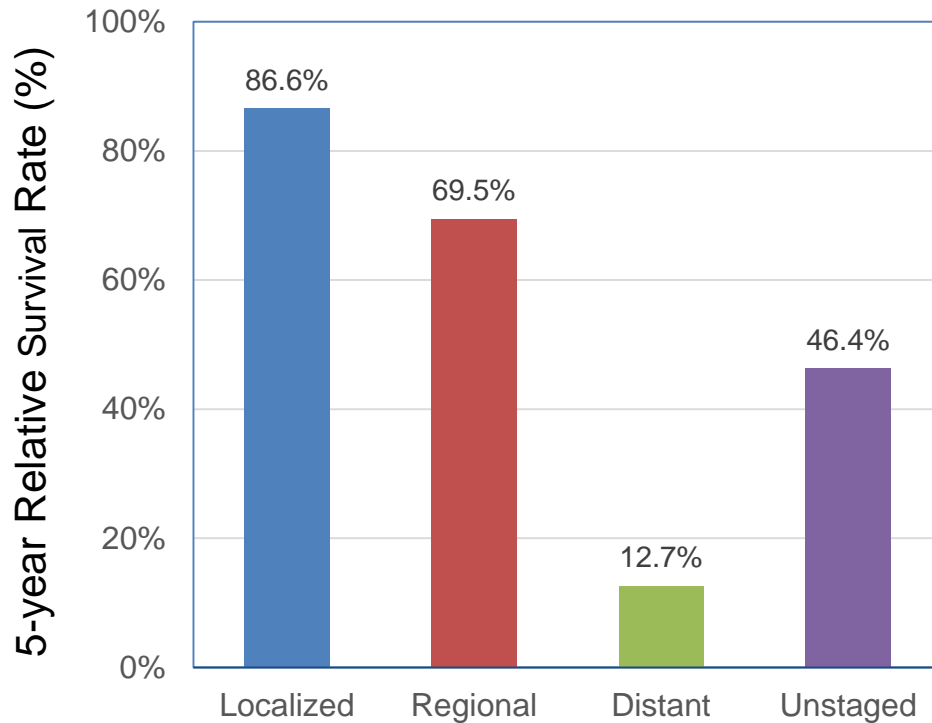
Colon and Rectum: Louisiana 1988-2013

Trends of Incidence and Mortality Rates by Race



*APCs were calculated using weighted least squares method

Colon and Rectum Cancer¹: Louisiana 5-Year Relative Survival by Stage², White Males, 2006-2012

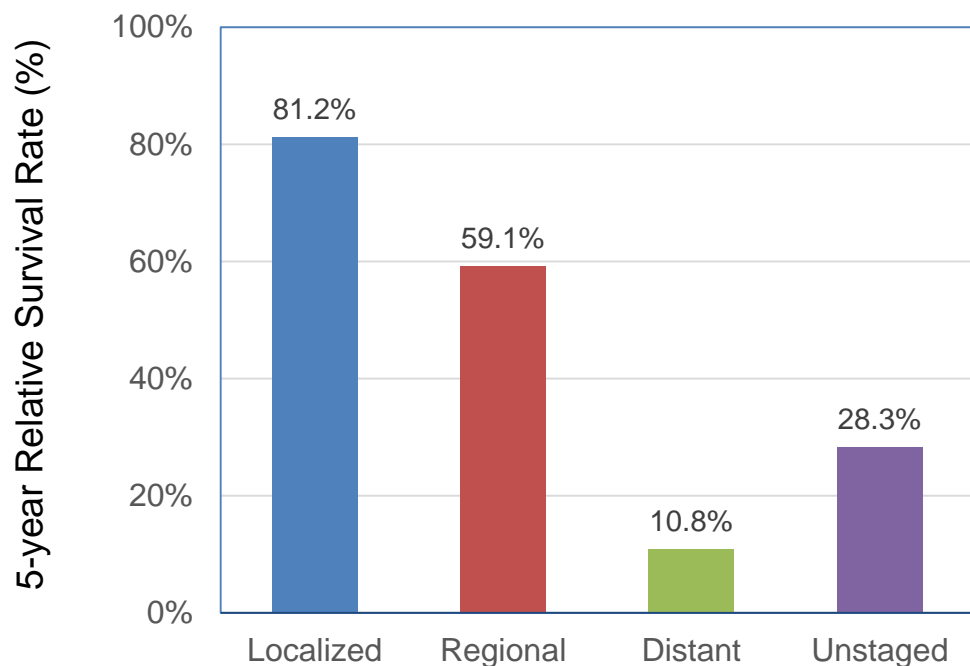


¹ Colon and rectum cancer includes first primary only (sequence number 0 or 1).

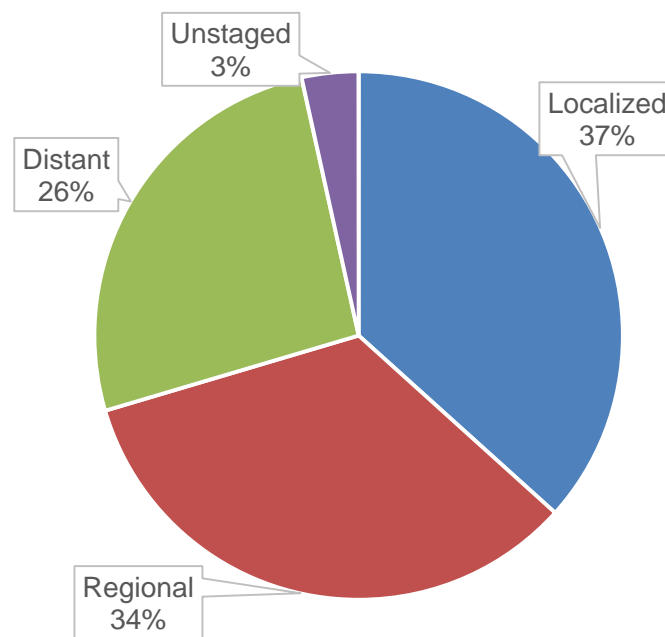
² The stage distribution is based on Summary Stage 2000.

Colon and Rectum Cancer¹: Louisiana

5-Year Relative Survival by Stage², Black Males, 2006-2012



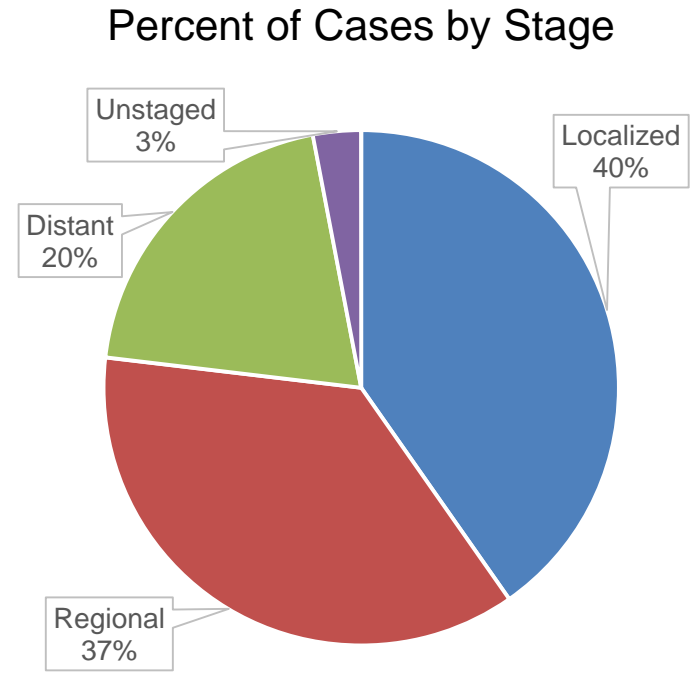
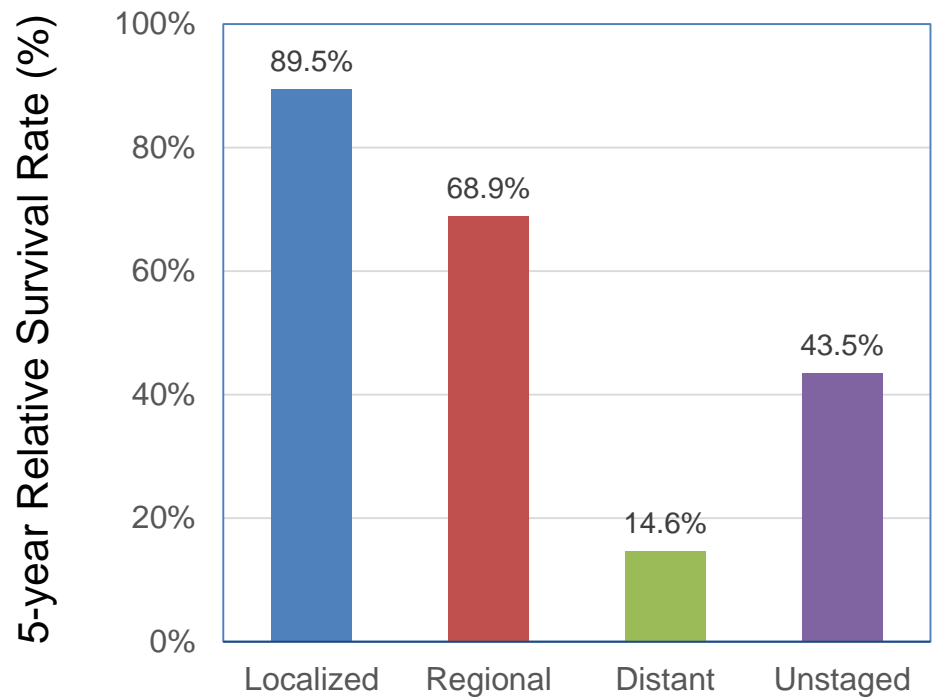
Percent of Cases by Stage



¹ Colorectal cancer includes first primary only (sequence number 0 or 1).

² The stage distribution is based on Summary Stage 2000.

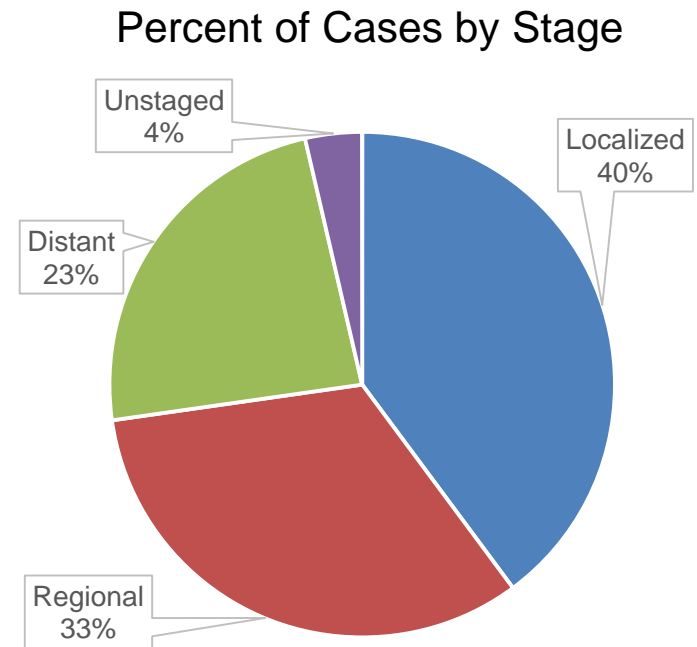
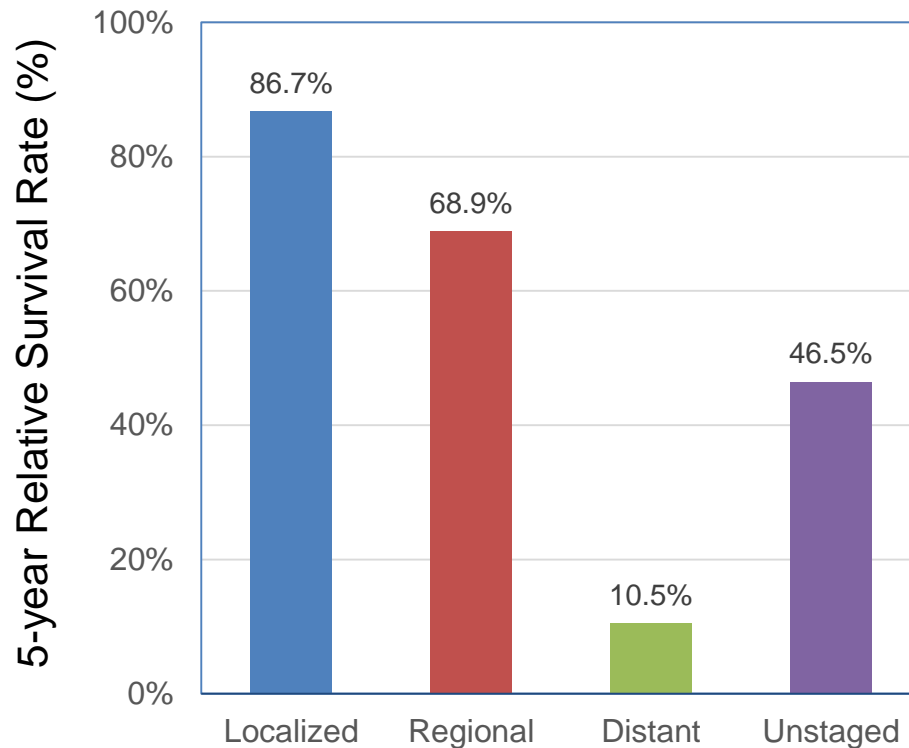
Colon and Rectum Cancer¹: Louisiana 5-Year Relative Survival by Stage², White Females, 2006-2012



¹ Colorectal cancer includes first primary only (sequence number 0 or 1).

² The stage distribution is based on Summary Stage 2000.

Colon and Rectum Cancer¹: Louisiana 5-Year Relative Survival by Stage², Black Females, 2006-2012



¹ Colorectal cancer includes first primary only (sequence number 0 or 1).

² The stage distribution is based on Summary Stage 2000.

Data Sources

Surveillance, Epidemiology, and End Results (SEER) Program (www.seer.cancer.gov), SEER*Stat Databases, National Cancer Institute, DCCPS, Surveillance Research Program, Surveillance Systems Branch, released April 2016, based on the November 2015 submission.

For Incidence:

- Incidence - SEER 18 Regs Research Data + Hurricane Katrina Impacted Louisiana Cases, Nov 2015 Sub (2000-2013) <Katrina/Rita Population Adjustment>
- SEER*DMS - LTR 1988-2013, June 7, 2016

For Mortality:

- Mortality – all COD, aggregated with States, Total U.S. (1969-2013) <Katrina/Rita Population Adjustment>

For Survival:

- Incidence - SEER 18 Regs Research Data + Hurricane Katrina Impacted Louisiana Cases, Nov 2015 Sub (1973-2013 varying)

Acknowledgements

Hospital cancer registries (<http://louisianatumorregistry.lsuhs.edu/>)

Louisiana Cancer Registrars' Association (<http://www.lcra-usa.org/>)

Physicians and staff members in:

- Medical records offices
- Pathology laboratories
- Physician offices and clinics
- Hospice programs and nursing homes

Regional and central offices of the Louisiana Tumor Registry
(<http://louisianatumorregistry.lsuhs.edu/regionalregistries.html>)

School of Public Health, LSU Health Sciences Center–New Orleans

Louisiana Cancer and Lung Trust Fund Board

Coroners' offices

Sources of LTR Funding

- National Cancer Institute, SEER Program
- National Program of Cancer Registries, CDC
- Louisiana Health Care Services Division

Editors

Xiangrong Li, MD, MSPH

Meichin Hsieh, PhD, MSPH, CTR

Lauren Maniscalco, MPH

Xiaocheng Wu, MD, MPH, CTR

Contributors

Brent Mumphrey, BS

Tina Lefante, MPH

Lisa Pareti, BS, RHIT, CTR

Yong Yi, PhD, MS

Questions?

Contact:

LTR-info@lsuhsc.edu

or

504-568-5757