

Louisiana Cancer Facts & Figures, Cervical Cancer, 2016

Louisiana Tumor Registry

September, 2016

Cervical Cancer*

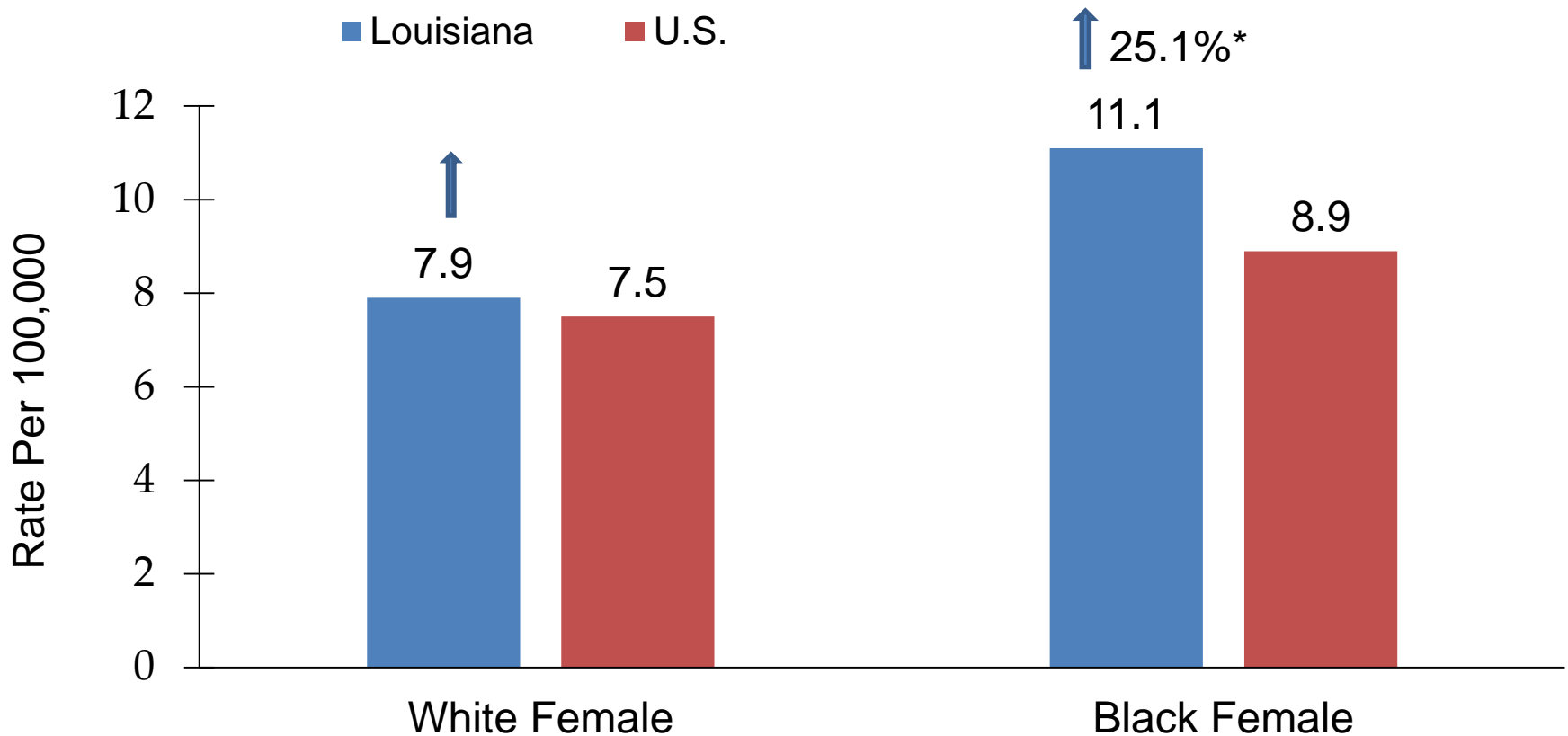
- Cervical cancer was the 15th most commonly diagnosed cancer in Louisiana, and 16th in the U.S.¹
- It was the 18th leading cause of cancer death in Louisiana and the 19th in the U.S.¹
- About 230 new cervical cancer cases are expected to be diagnosed and about 80 persons are expected to die of this cancer in Louisiana in 2017.²

¹ Data source: Centers for Disease Control and Prevention

² Data source: American Cancer Society, Cancer Facts & Figures 2017

* ICD_O_3/WHO 2008 code: C530-C539; excluding ICD-O-3 histology (type): 9050-9055, 9140, 9590-9992

Cervical Cancer: Incidence Rates ^{1,2}, 2009-2013

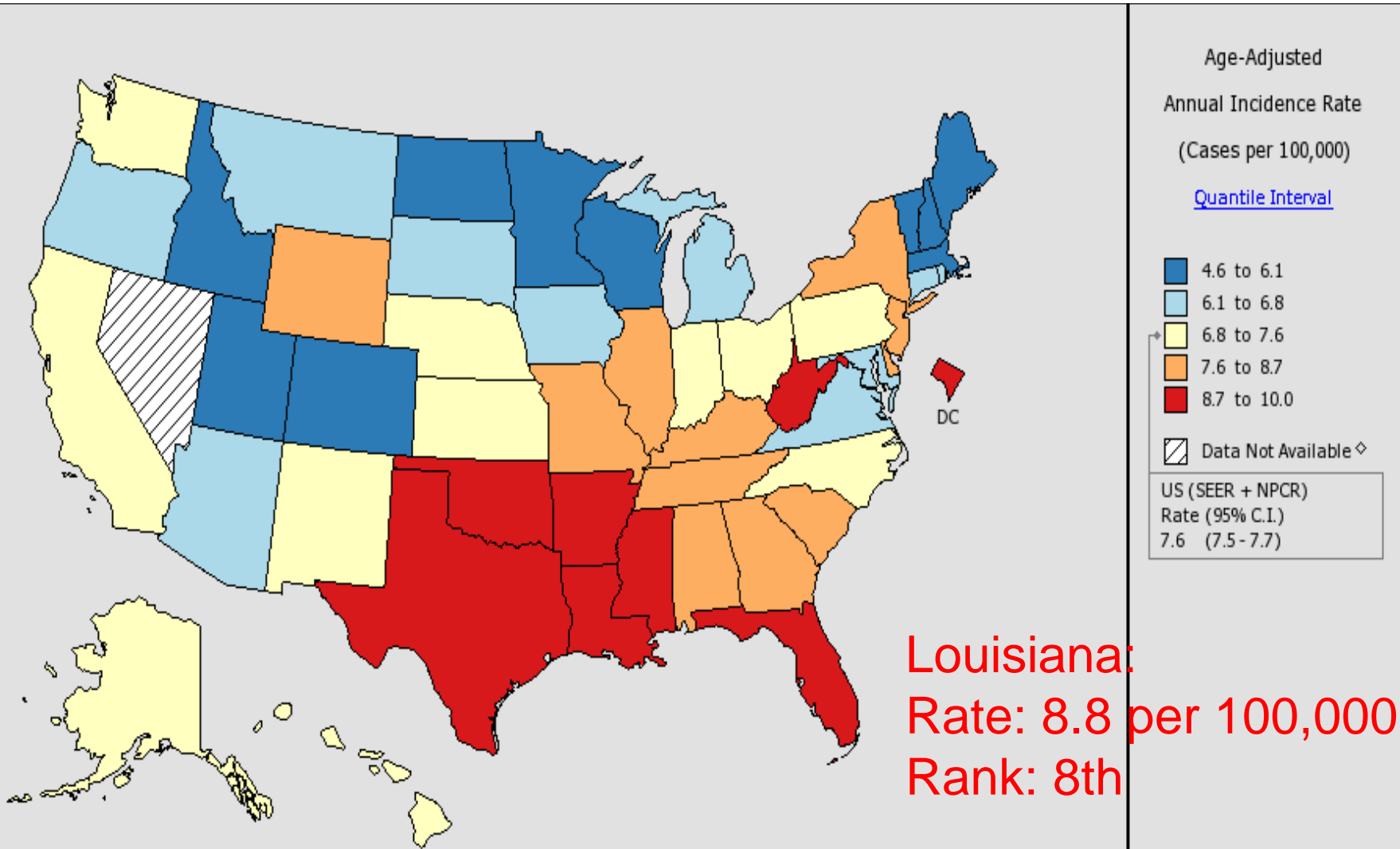


¹ Age-adjusted to the 2000 U.S. standard population.

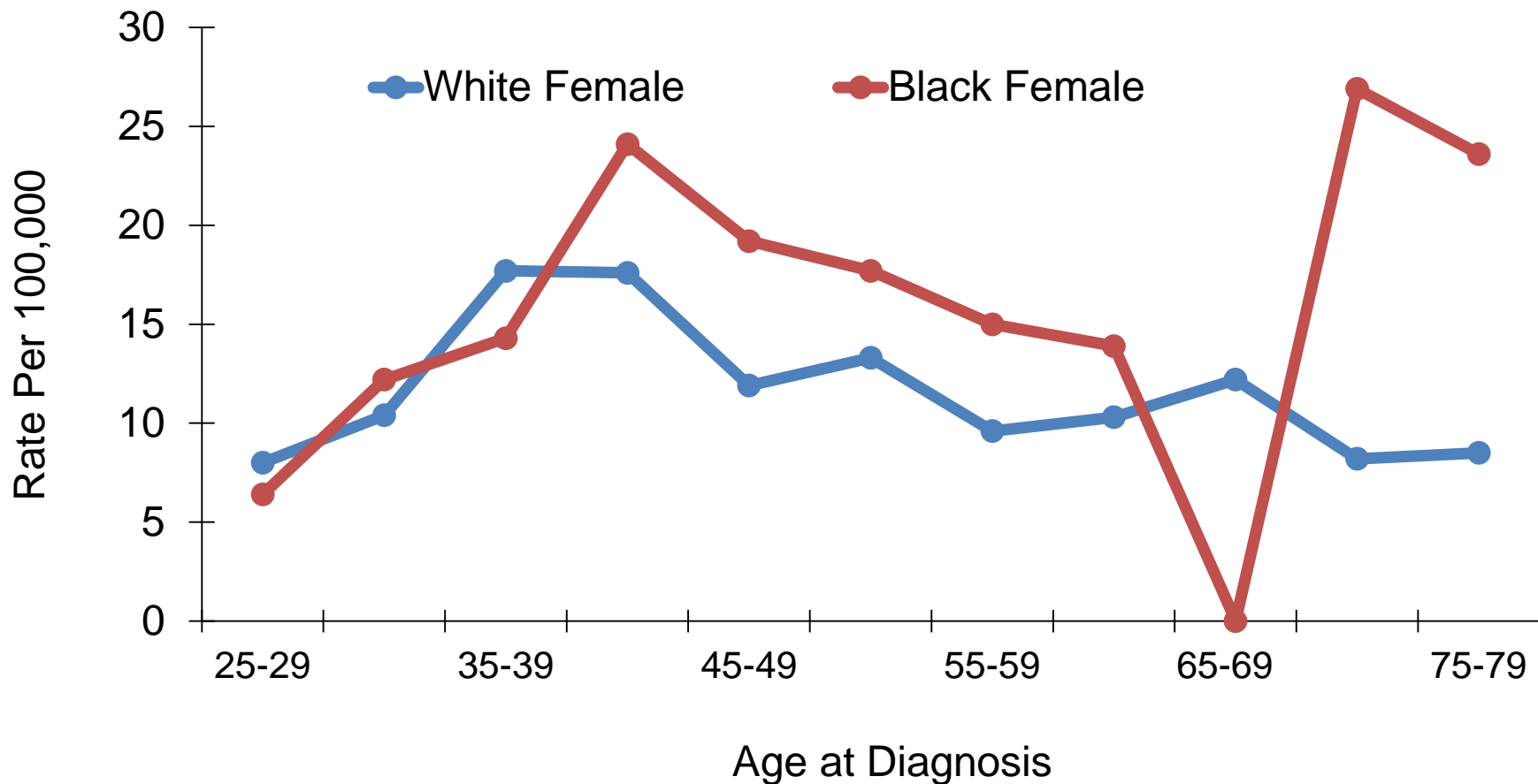
² U.S. incidence data source: 18 SEER registries.

* Incidence rate of Louisiana is significantly different from that of U.S.

Incidence Rates of Cervical Cancer in the U.S. All Races, Females, 2009-2013

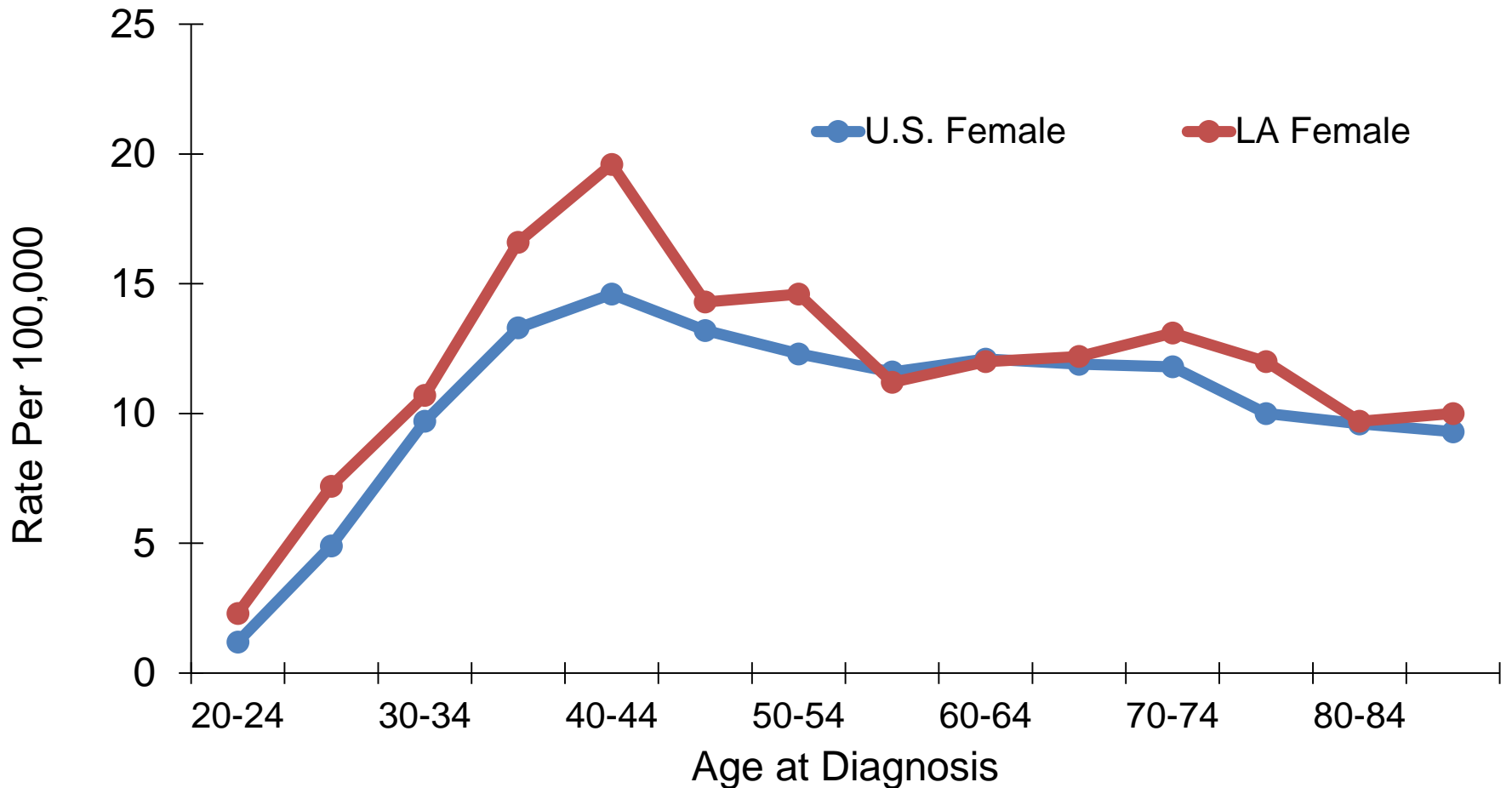


Cervical Cancer: Age-Specific Incidence Rates Louisiana, 2009-2013



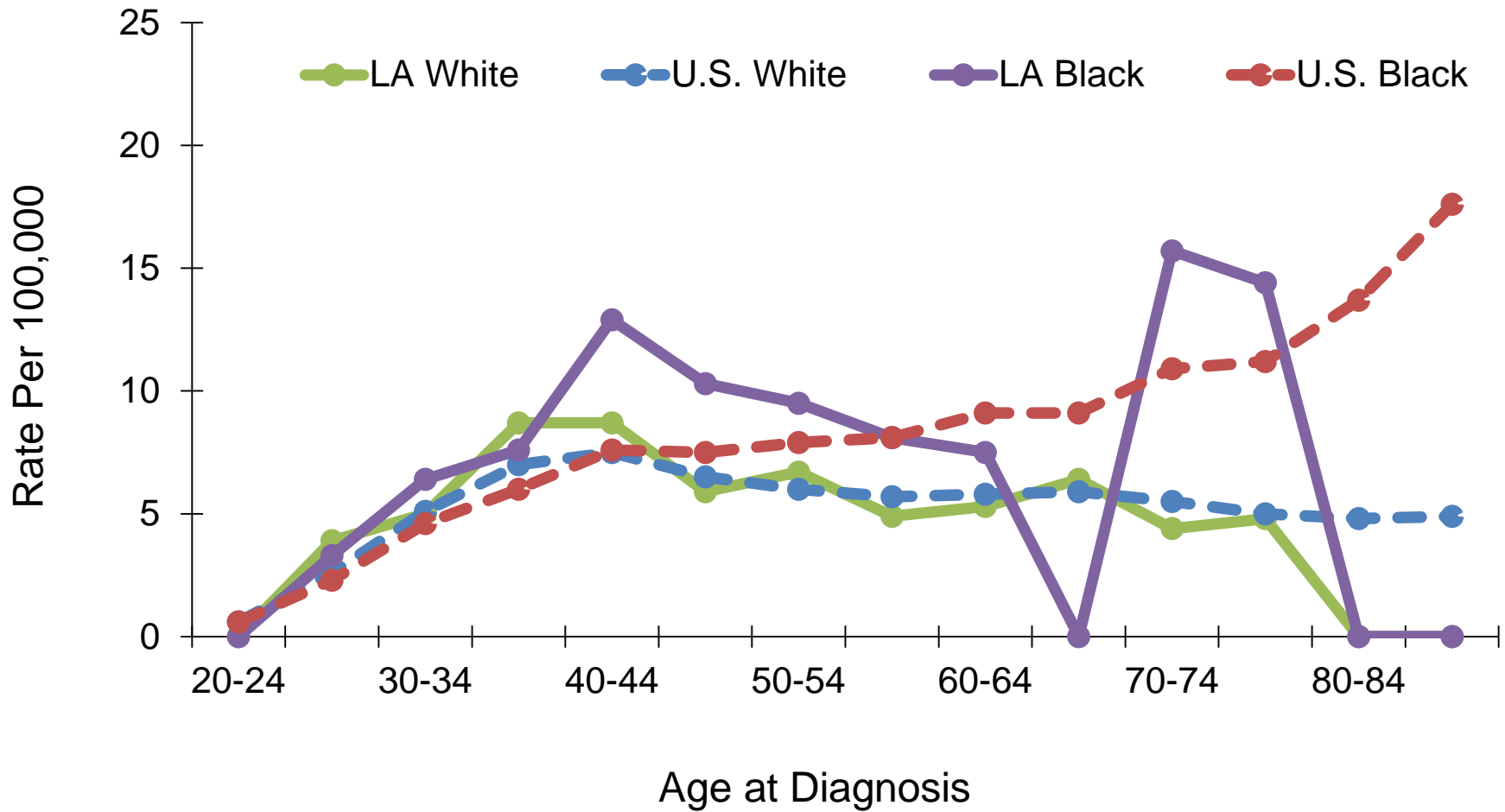
U.S. data source: 18 SEER registries.

Cervical Cancer : Age-Specific Incidence Rates by Gender, 2009-2013



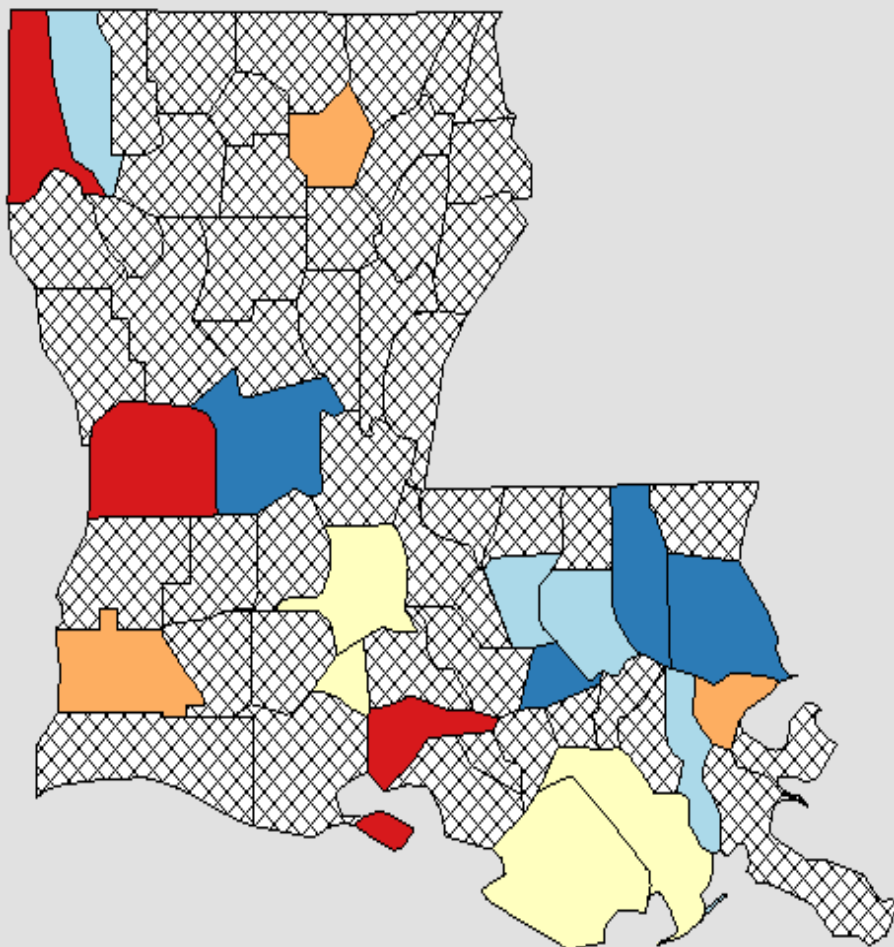
U.S. data source: 18 SEER registries.

Cervical Cancer : Age-Specific Incidence Rates by Race, 2009-2013



U.S. data source: 18 SEER registries.

Incidence Rates of Cervical Cancer in Louisiana, All Races, Females, 2009-2013



Age-Adjusted
Annual Incidence Rate
(Cases per 100,000)

[Quantile Interval](#)

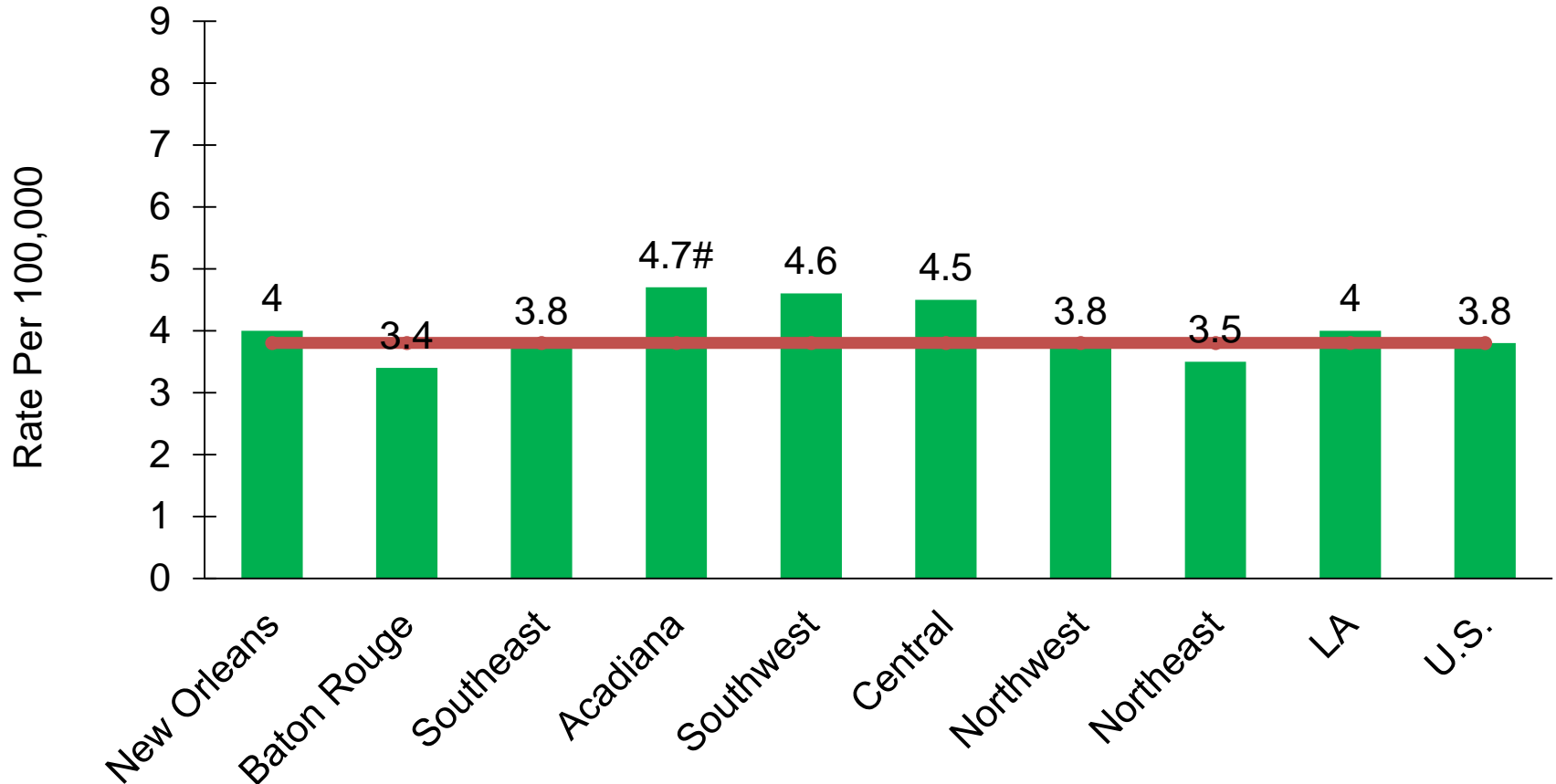
- 5.8 to 7.0
- 7.0 to 8.2
- 8.2 to 9.4
- 9.4 to 9.8
- 9.8 to 14.0

Suppressed * / **

US (SEER + NPCR)
Rate (95% C.I.)
7.6 (7.5 - 7.7)

Louisiana
Rate (95% C.I.)
8.8 (8.2 - 9.3)

Cervical Cancer Incidence Rates^{1,2} by Region: Louisiana, Whites, 2009-2013

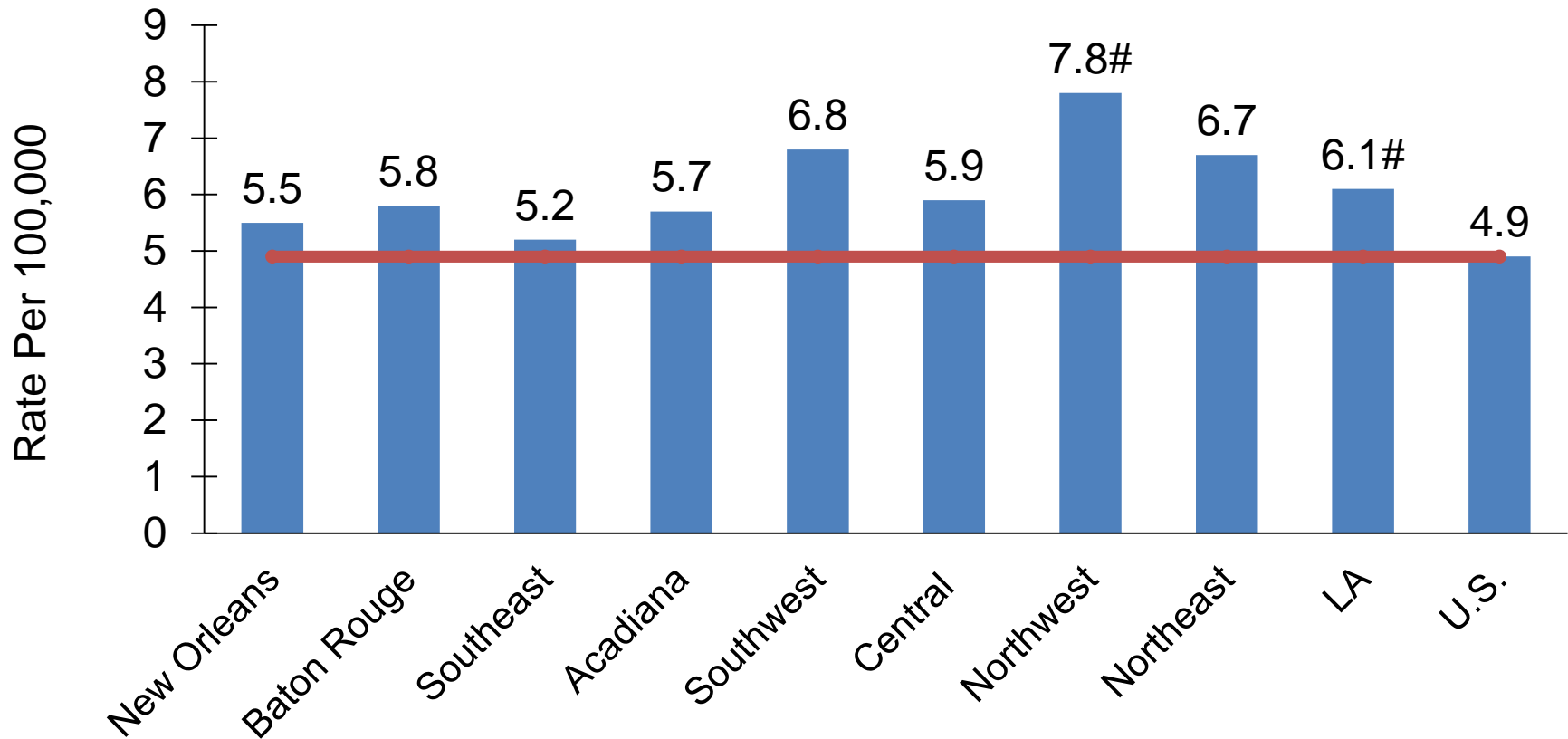


¹ Age-adjusted to the 2000 U.S. standard population.

² Data source for U.S. was the 18 SEER registries.

Incidence rate of regions/Louisiana is significantly different from that of US.

Cervical Cancer Incidence Rates^{1,2} by Region: Louisiana, Blacks, 2009-2013

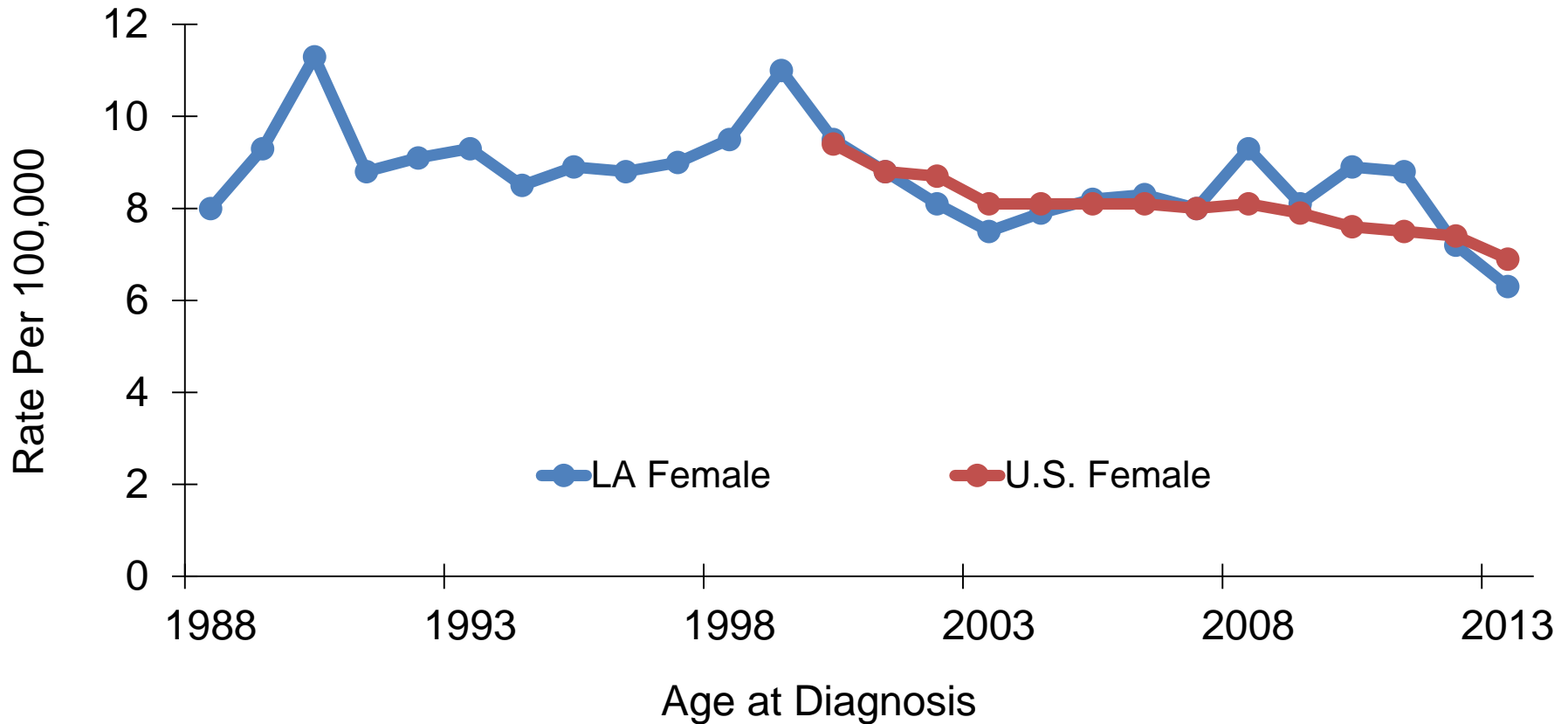


¹ Age-adjusted to the 2000 U.S. standard population.

² Data source for U.S. was the 18 SEER registries.

Incidence rate of regions/Louisiana is significantly different from that of U.S.

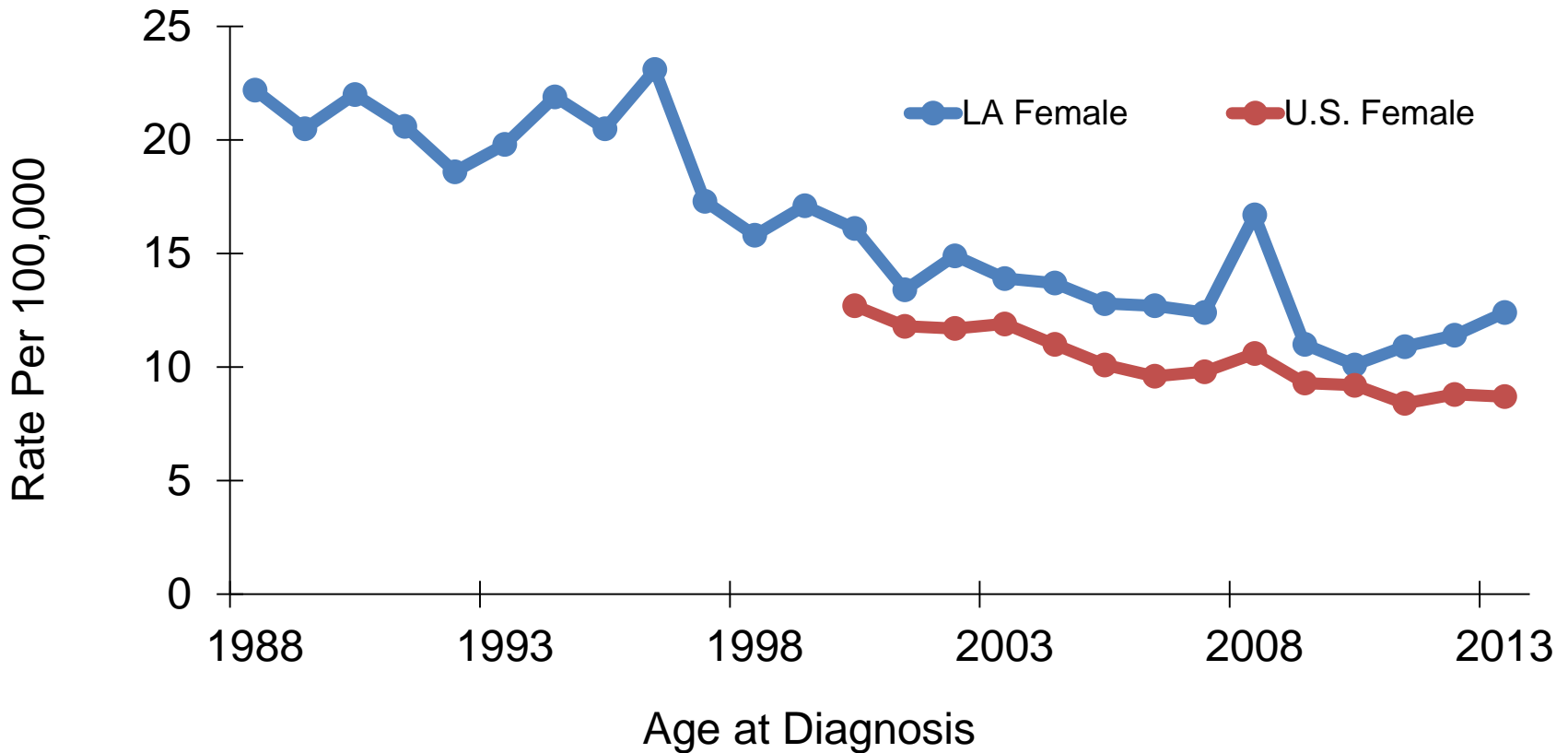
Cervical Cancer: Trends of Incidence Rates^{1,2} Whites, 1988-2013



¹ Age-adjusted to the 2000 U.S. standard population.

² U.S. data source: 18 SEER registries.

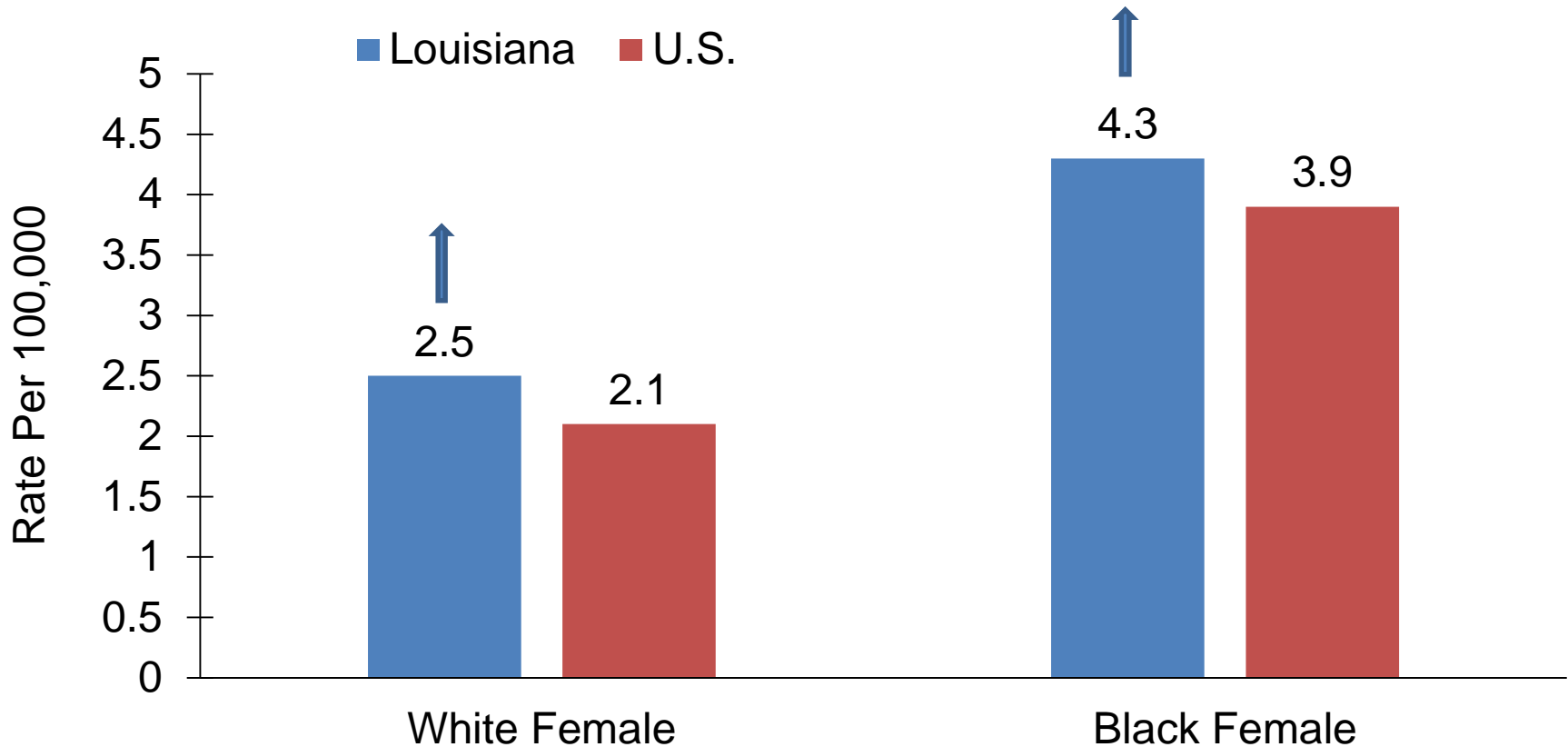
Cervical Cancer: Trends of Incidence Rates^{1,2} Blacks, 1988-2013



¹ Age-adjusted to the 2000 U.S. standard population.

² U.S. data source: 18 SEER registries.

Cervical Cancer: Mortality Rates^{1,2}, 2009-2013

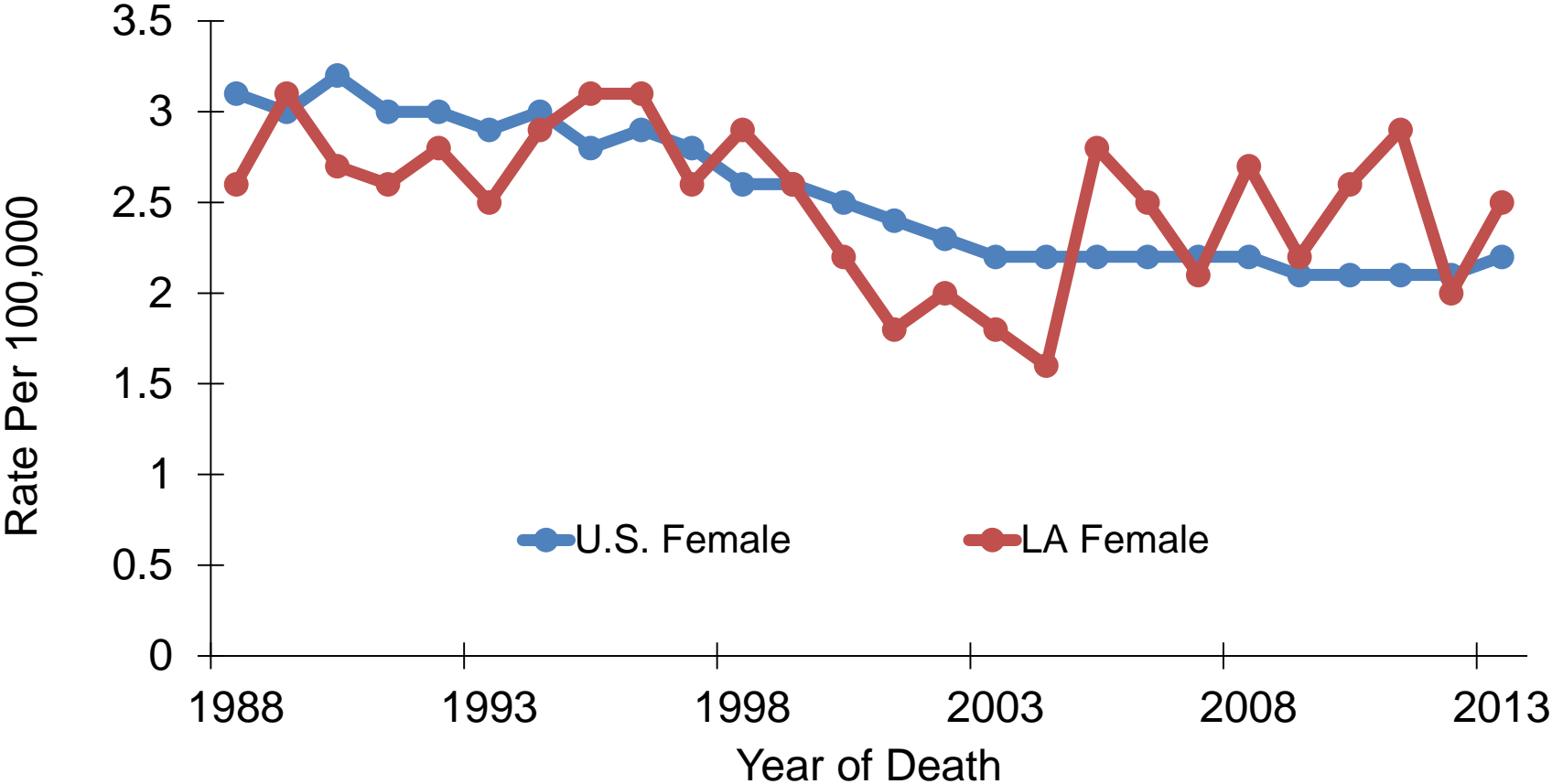


¹ Age-adjusted to the 2000 U.S. standard population.

² Data source: National Center of Health Statistics (NCHS).

* The rate of Louisiana is significantly different from that of U.S.

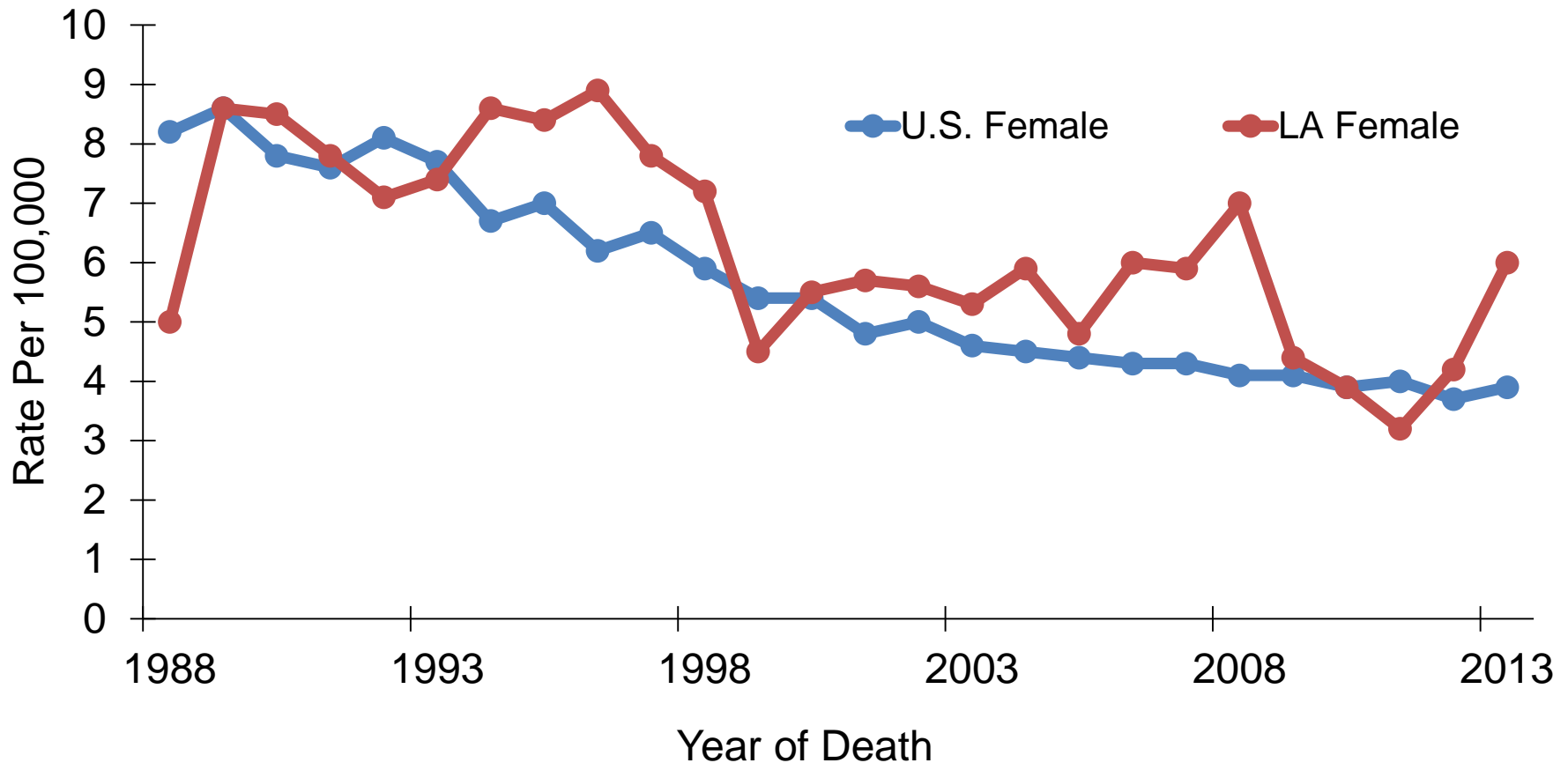
Cervical Cancer: Trends of Mortality Rates^{1,2}, Whites, 1988-2013



¹ Adjusted to the 2000 U.S. standard population.

² Data source: National Center of Health Statistics (NCHS).

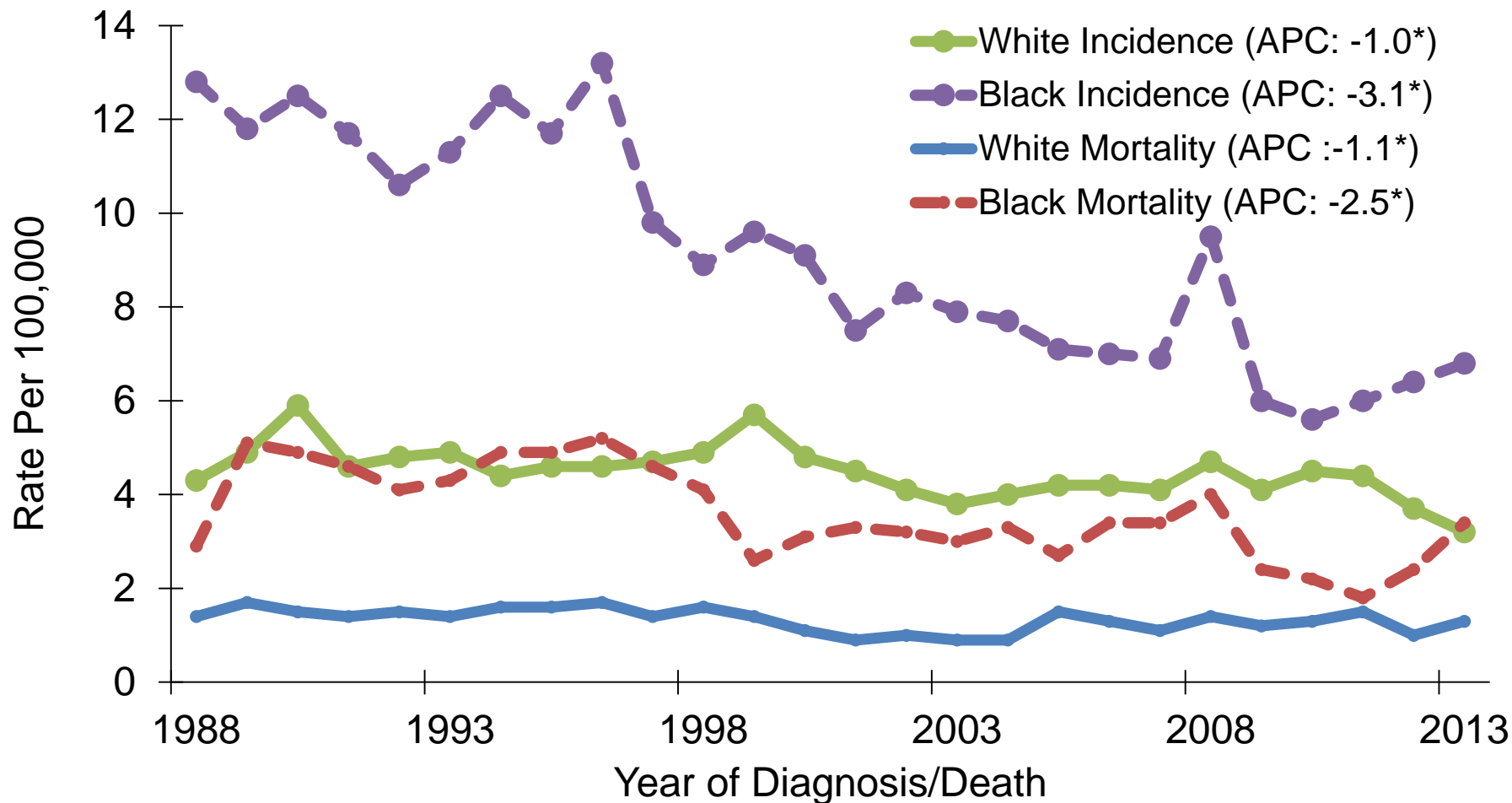
Cervical Cancer: Trends of Mortality Rates^{1,2}, Blacks, 1988-2013



¹ Age-adjusted to the 2000 U.S. standard population.

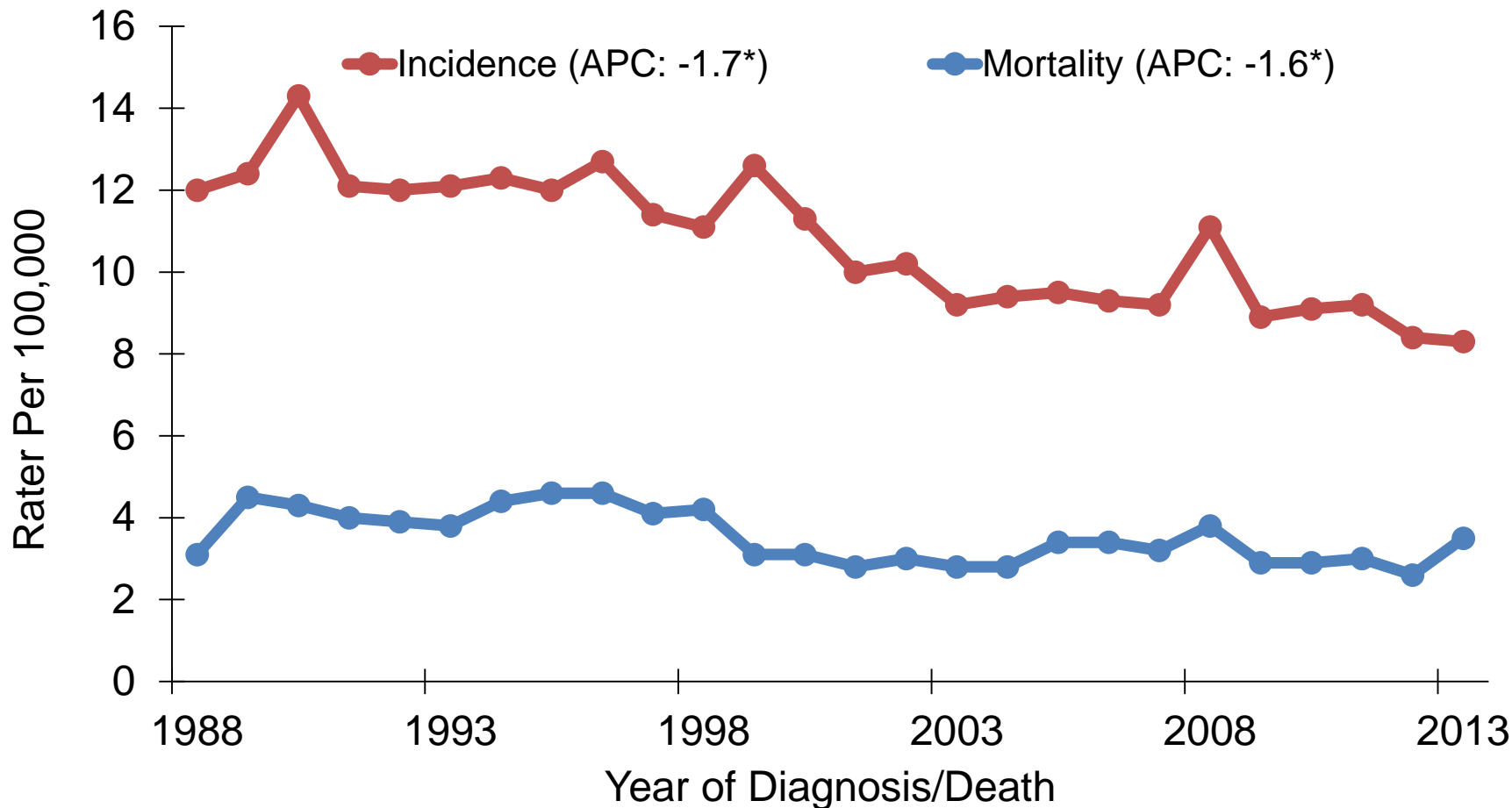
² Data source: National Center of Health Statistics (NCHS).

Cervical Cancer: Trends of Incidence and Mortality Rates, by Race, Louisiana, 1988-2013



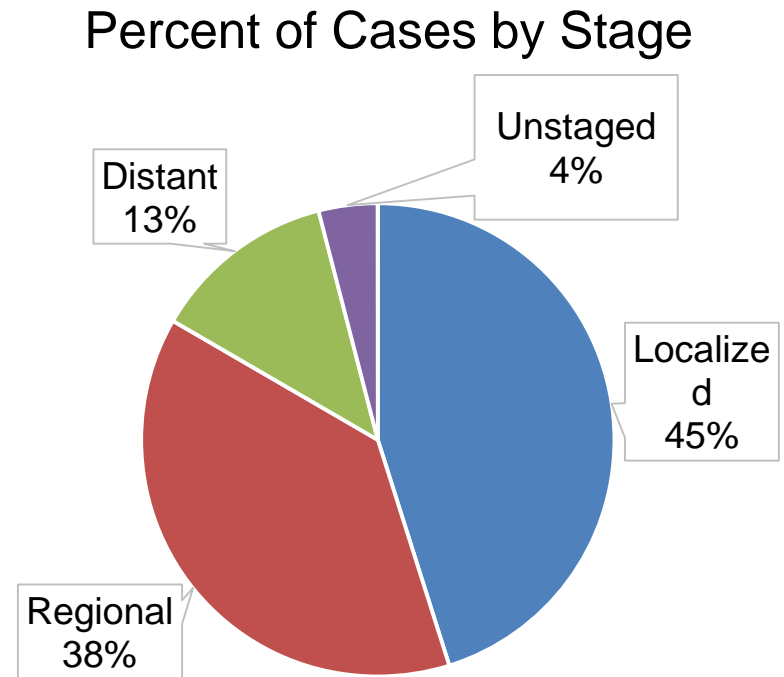
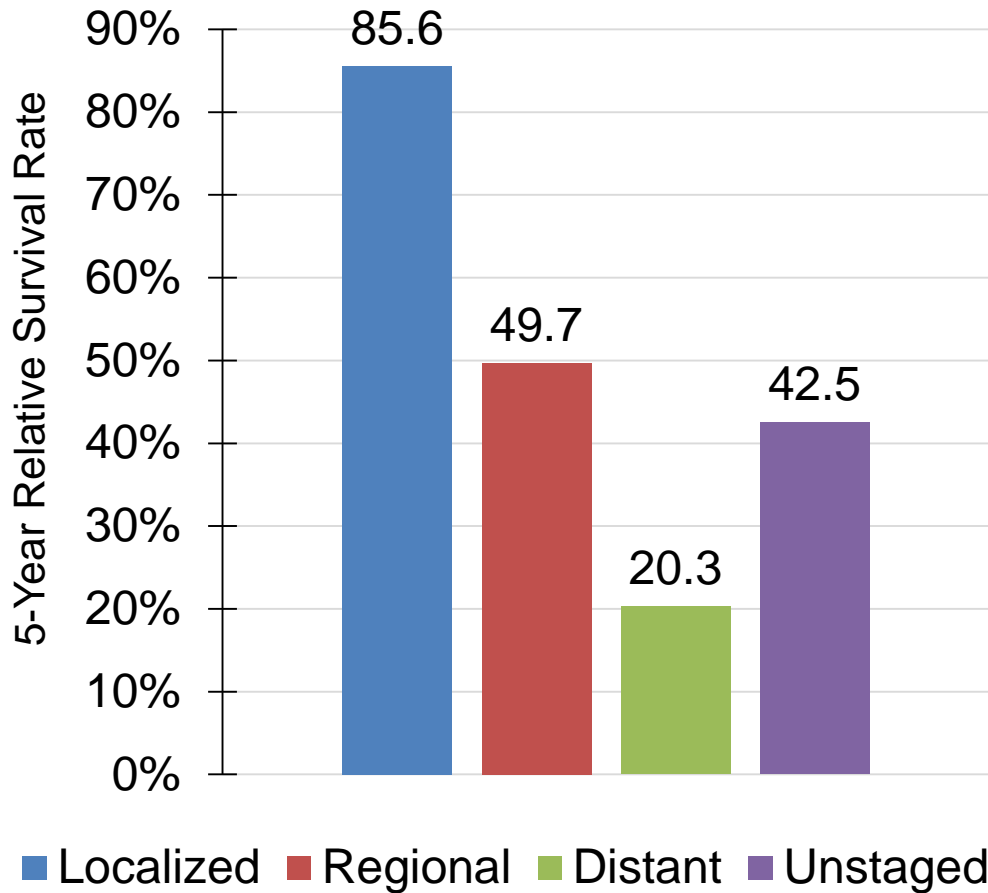
*APCs were calculated using weighted least squares method

Cervix Uteri Cancer: Trends of Incidence and Mortality Rates, Louisiana, 1988-2013



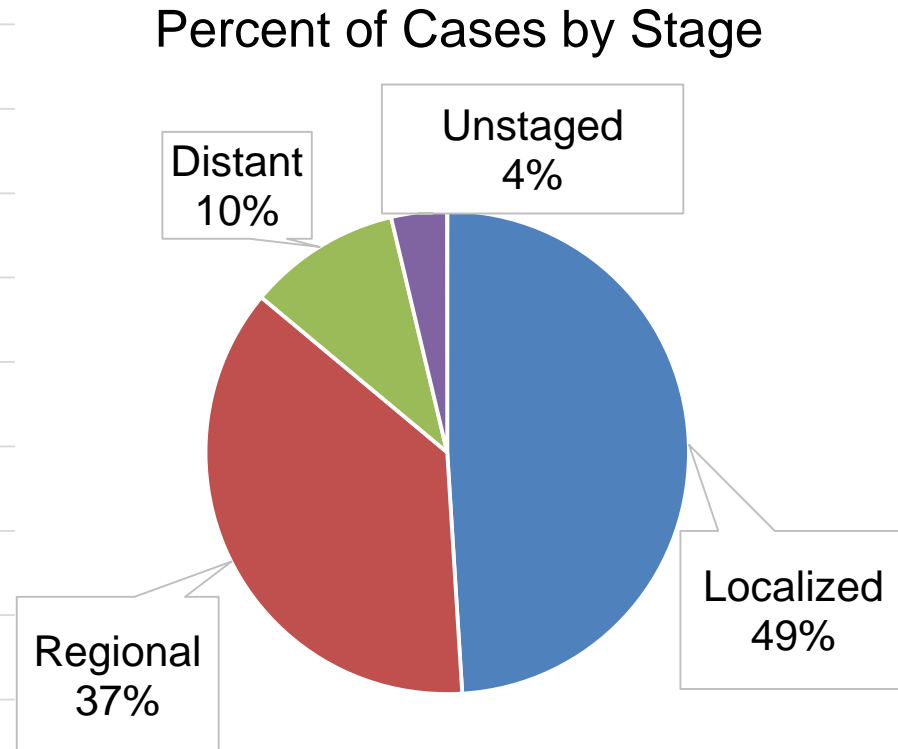
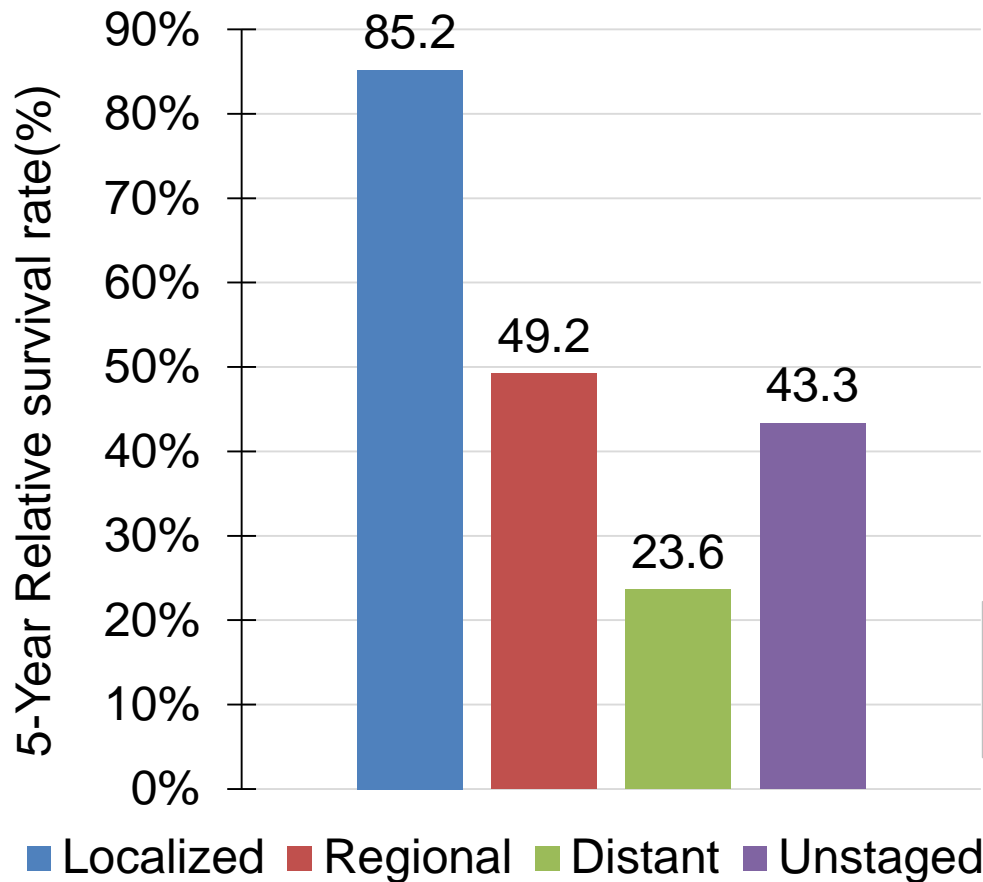
*APCs were calculated using weighted least squares method

Cervix Uteri Cancer¹, All Races, Females, Louisiana, 2006-2012



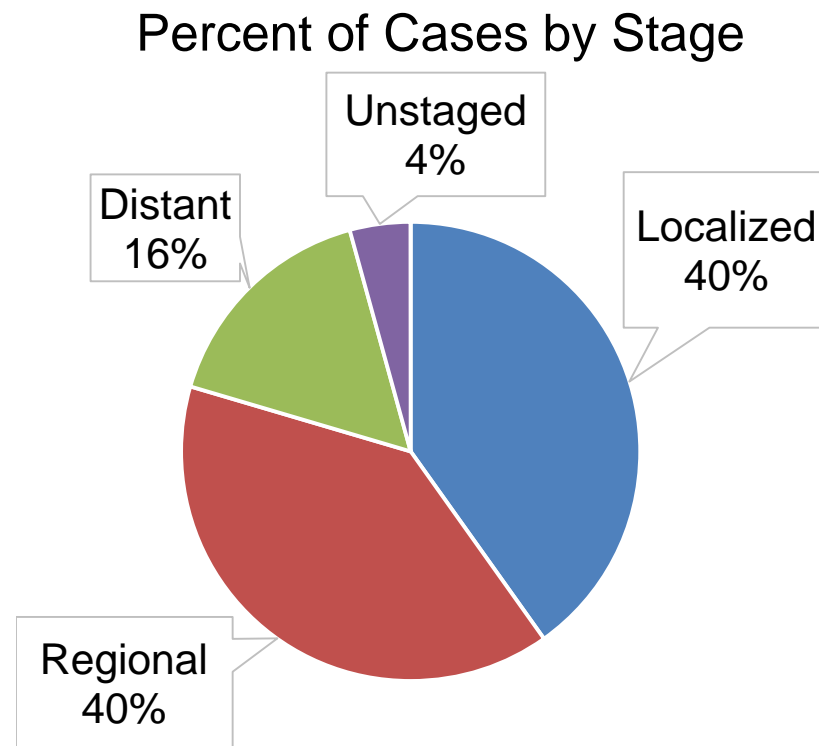
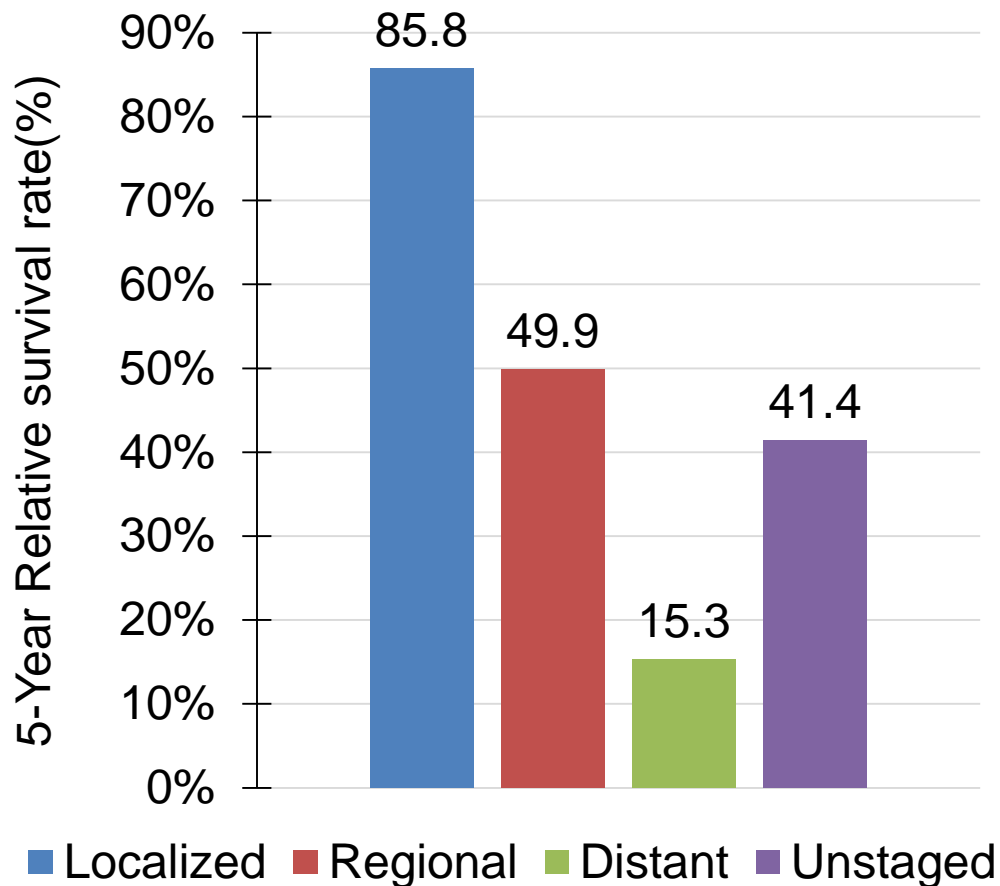
¹ The stage distribution is based on Summary Stage 2000.

Cervical Cancer¹, White Female, Louisiana, 2006-2012



¹ The stage is based on Derived Summary Stage 2000.

Cervical Cancer¹, Black Females, Louisiana, 2006-2012



¹ The stage is based on Derived Summary Stage 2000.

Data Sources

Surveillance, Epidemiology, and End Results (SEER) Program (www.seer.cancer.gov) SEER*Stat Databases, National Cancer Institute, DCCPS, Surveillance Research Program, Surveillance Systems Branch, released April 2016, based on the November 2015 submission.

For Incidence:

- Incidence - SEER 18 Regs Research Data + Hurricane Katrina Impacted Louisiana Cases, Nov 2015 Sub (2000-2013) <Katrina/Rita Population Adjustment>
- SEER*DMS - LTR 1988-2013, June 7, 2016

For Mortality:

- mortality – all COD, aggregated with States, Total U.S. (1969-2013) <Katrina/Rita Population Adjustment>

For Survival:

- Incidence - SEER 18 Regs Research Data + Hurricane Katrina Impacted Louisiana Cases, Nov 2015 Sub (1973-2013 varying)

Acknowledgements

- **Hospital cancer registries** (<http://louisianatumorregistry.lsuhs.edu/>)
- **Louisiana Cancer Registrars' Association** (<http://www.lcra-usa.org/>)
- **Physicians and staff members in:**
 - Medical records offices
 - Pathology laboratories
 - Physician offices and clinics
 - Hospice programs and nursing homes
- **Regional and central offices of the Louisiana Tumor Registry**
(<http://louisianatumorregistry.lsuhs.edu/regionalregistries.html>)
- **School of Public Health, LSU Health Sciences Center–New Orleans**
- **Louisiana Cancer and Lung Trust Fund Board**
- **Coroners' offices**

Sources of LTR Funding

- National Cancer Institute, SEER Program
- National Program of Cancer Registries, CDC
- Louisiana Health Care Services Division

Editors

Shuang Yang, MPH

Meichin Hsieh, PhD, MSPH, CTR

Lauren Maniscalco, MPH

Xiaocheng Wu, MD, MPH, CTR

Contributors

Xiangrong Li, MD, MSPH

Brent Mumphrey, BS

Tina Lefante, MPH

Lisa Pareti, BS, RHIT, CTR

Yong Yi, PhD, MS

Questions?

Contact:

LTR-info@lsuhsc.edu

or

504-568-5757