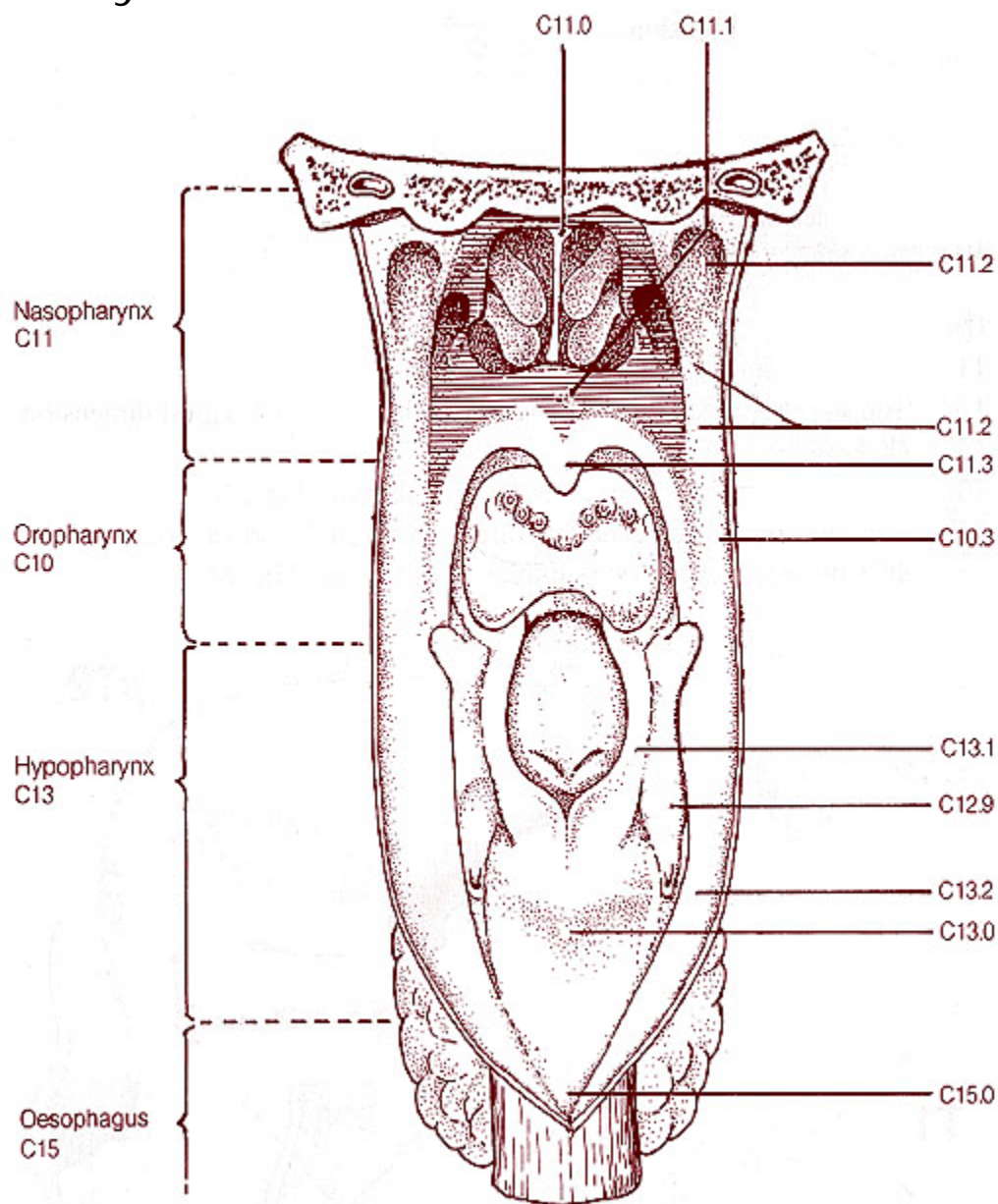


Pharynx



ICD-O Code	Term
C10.3	Posterior wall of oropharynx
C11.0	Superior wall of nasopharynx
C11.1	Posterior wall of nasopharynx
C11.2	Lateral wall of nasopharynx
C11.3	Anterior wall of nasopharynx
C11.8	Overlapping lesion of nasopharynx
C11.9	Nasopharynx, NOS
C12.9	Pyriform sinus
C13.0	Postcricoid region
C13.1	Hypopharyngeal aspect of aryepiglottic fold
C13.2	Posterior wall of hypopharynx