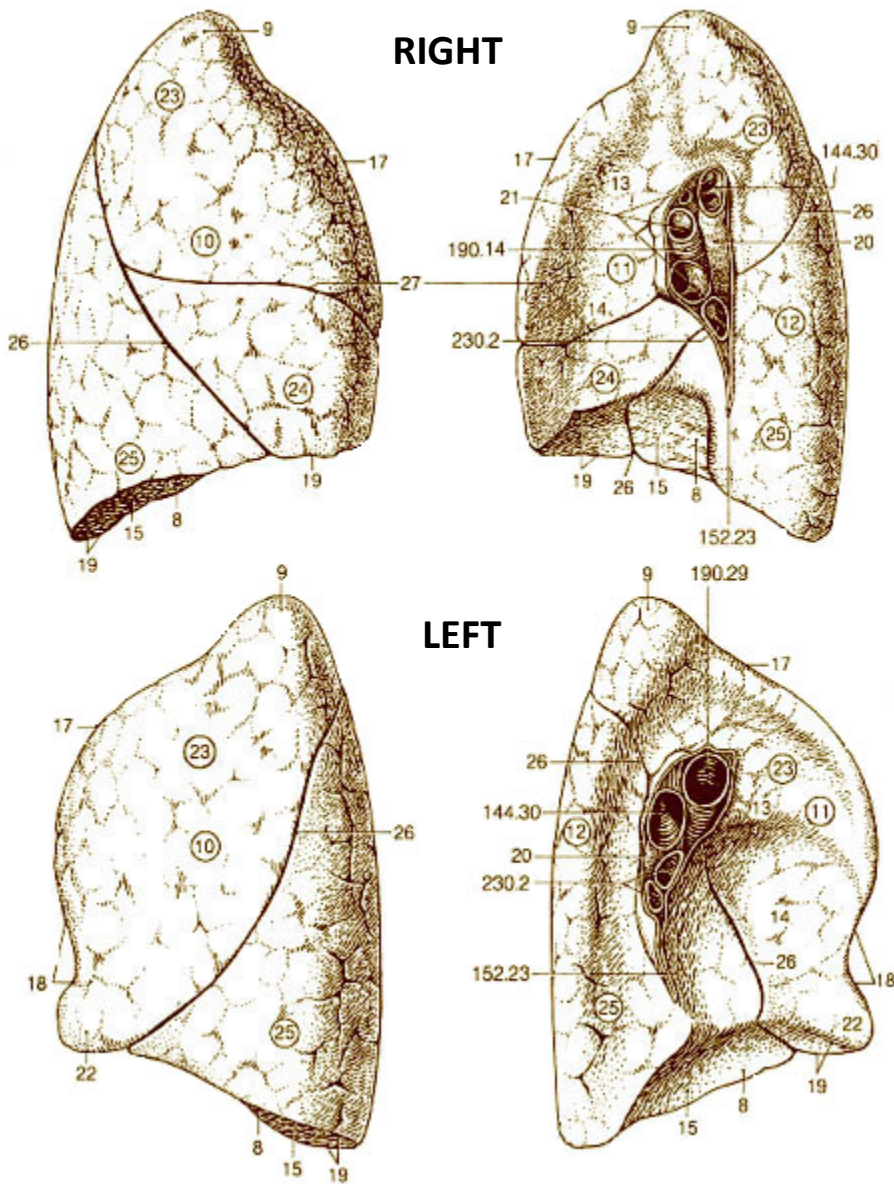


# Illustration of the Lung



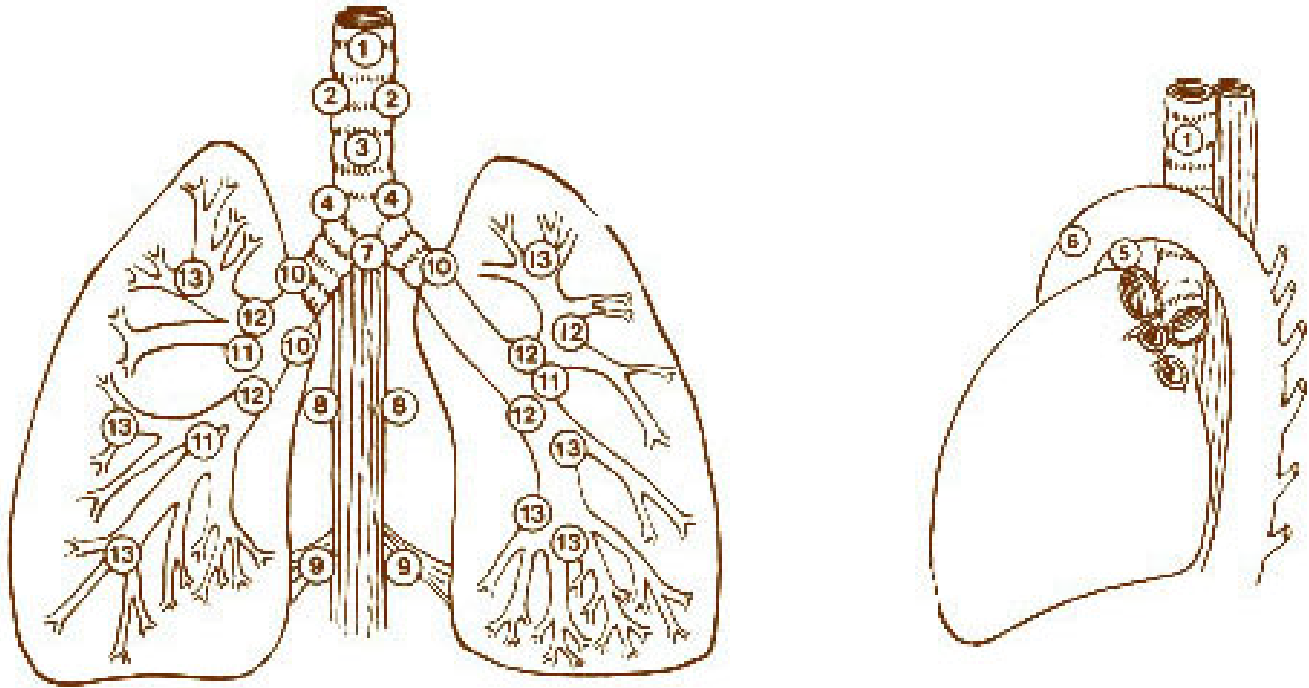
**RIGHT**

**LEFT**

- 8. Base of lung
- 9. Apex of lung
- 10. Costal surface  
Facing ribs
- 11. Medial surface  
Facing mediastinum
- 12. Vertebral part  
Facing vertebral column
- 13. Mediastinal part
- 14. Cardiac impression
- 15. Diaphragmatic surface
  
- 17. Anterior border
- 18. Cardiac notch
- 19. Inferior border
  
- 20. Hilum of lung
- 21. Root of lung
- 22. Lingula of left lung
- 23. Superior lobe (upper lobe)
- 24. Middle lobe (only on right)
- 25. Inferior lobe (lower lobe)
- 26. Oblique fissure
- 27. Horizontal fissure of right lung
  
- 144.30 Main bronchus
  
- 152.23 Pulmonary ligament
  
- 190.14 Right pulmonary artery
  
- 190.29 Left pulmonary artery
  
- 230.2 Pulmonary veins

Source: Pocket Atlas of Human Anatomy, 3rd edition. H. Feneis. Georg Thieme Verlag, New York. 1994.

# Lymph Nodes of Lungs & Mediastinum and a Sagittal View of Heart



Intrathoracic (showing AJCC Node category)

## Pulmonary

- 12. N1 Peribronchial
- 11. N1 Intrapulmonic (interlobar)
- 10. N1 Hilar
- 13. N1 Segmental

## Superior mediastinal

- 1. N2-3 Superior mediastinal
- 3. N2-3 Pretracheal, retrotracheal
- 2. N2-3 Paratracheal
- 4. N2-3 Lower paratracheal
- 4. N2-3 Azygos

## Aortic

- 5. N2-3 Subaortic (aortic window)
- 6. N2-3 Para-aortic (ascending aorta or phrenic)

## Inferior mediastinal

- 7. N2 Carinal
- 7. N2 Subcarinal
- 8. N2-3 Paraesophageal
- 9. N2-3 Pulmonary ligament

## Extrathoracic

### • **N3 Scalene**

Along scalenus muscles in the base of the neck. The individual scalene muscles are the scalenus anterior, posterior, medius, and minimus.