

Louisiana Cancer Facts & Figures, Prostate Cancer, 2013

Louisiana Tumor Registry

Xiang-Rong Li, MD, MSPH

October, 2013

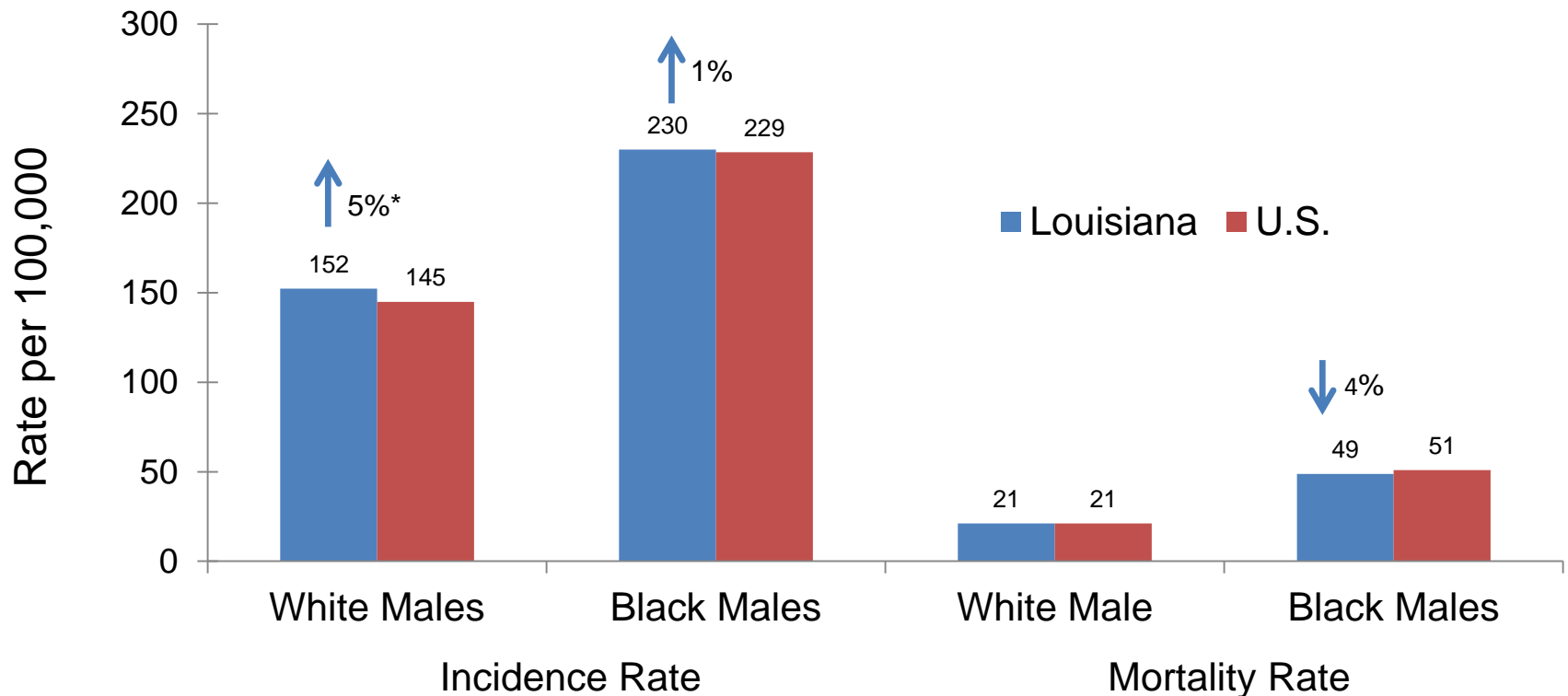
Prostate Cancer

Prostate Cancer was the first most common cancer and the second leading cause of cancer death in Louisiana men.

About 4,040 new prostate cancers are expected to be diagnosed and about 420 male are expected to die of prostate cancer in Louisiana 2013¹.

¹: Data source: American Cancer Society, Cancer Facts & Figures 2013

Incidence and Mortality Rates¹ of Prostate Cancer, Louisiana vs. US ², 2006-2010

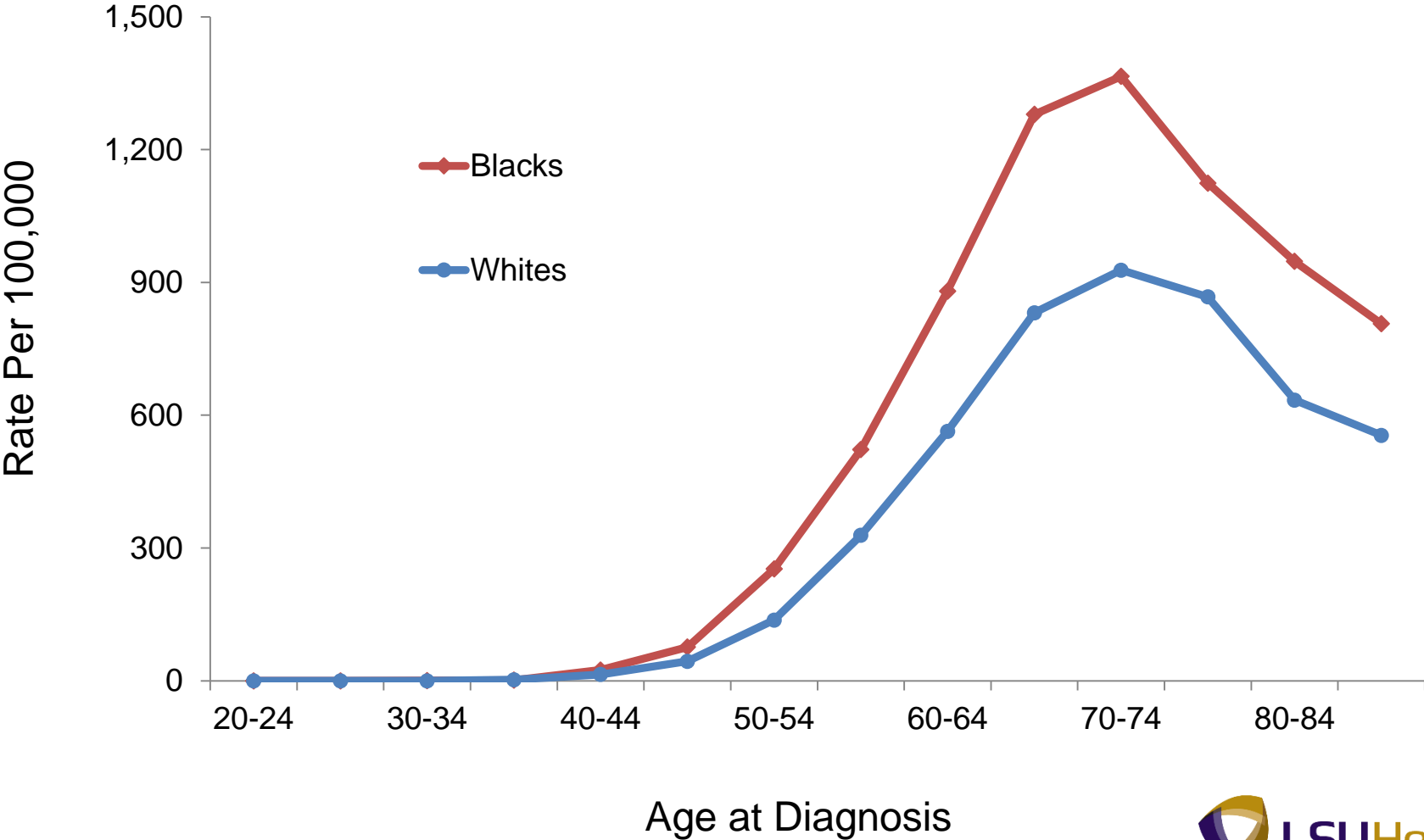


1. Age-adjusted to the 2000 US standard population;

2. Incidence data source: SEER 18 registries; Mortality data source: National Center for Health Statistics (NCHS).

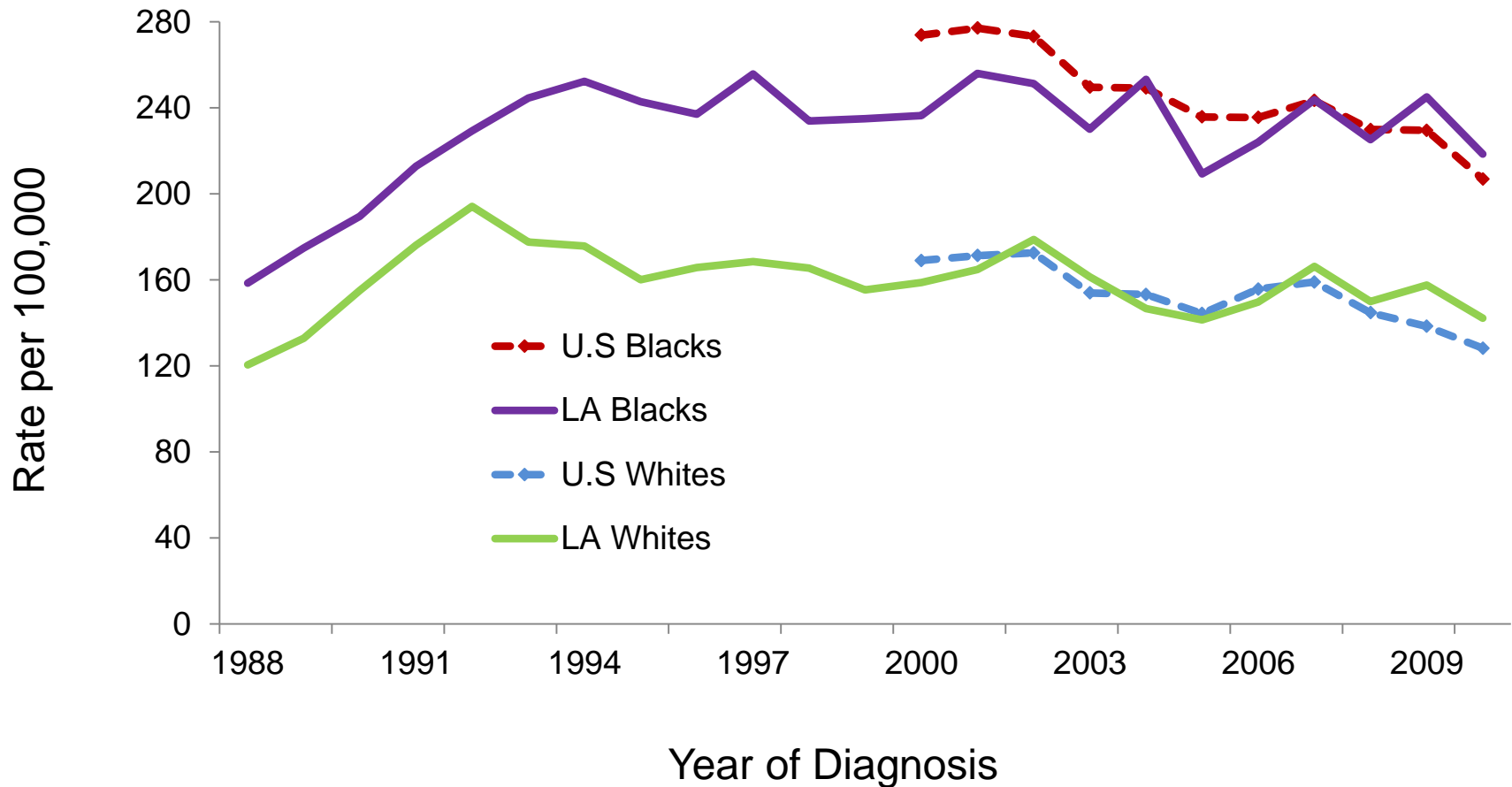
* Rate of Louisiana is significantly different from that of US.

Age-Specific Cancer Incidence Rates of Prostate Cancer, Louisiana, 2006-2010



Trends of Cancer Incidence Rate^{1,2}

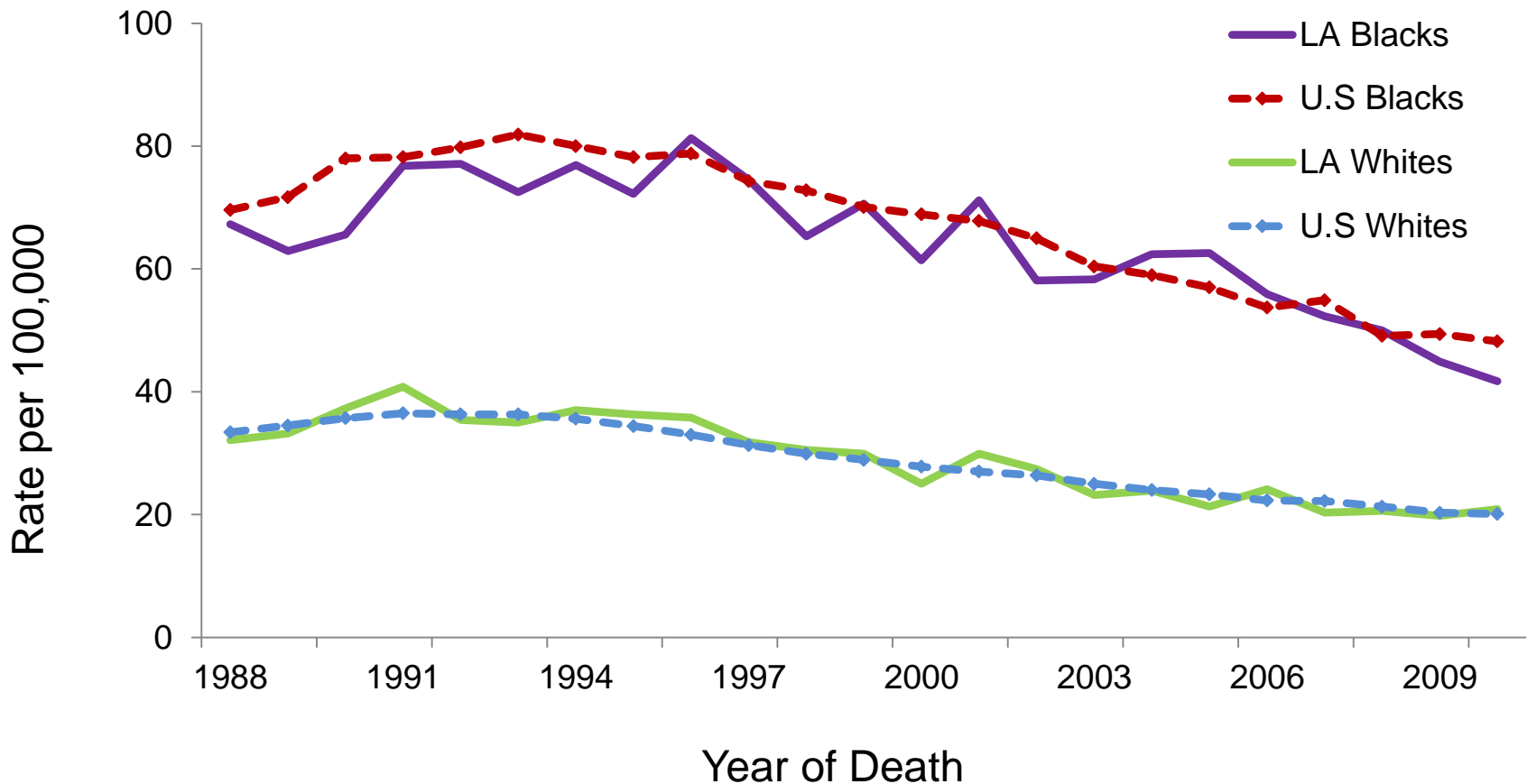
Prostate Cancer, 1988-2010



¹ Age-adjusted to the 2000 US standard population.

² US incidence data source: 18 SEER registries.

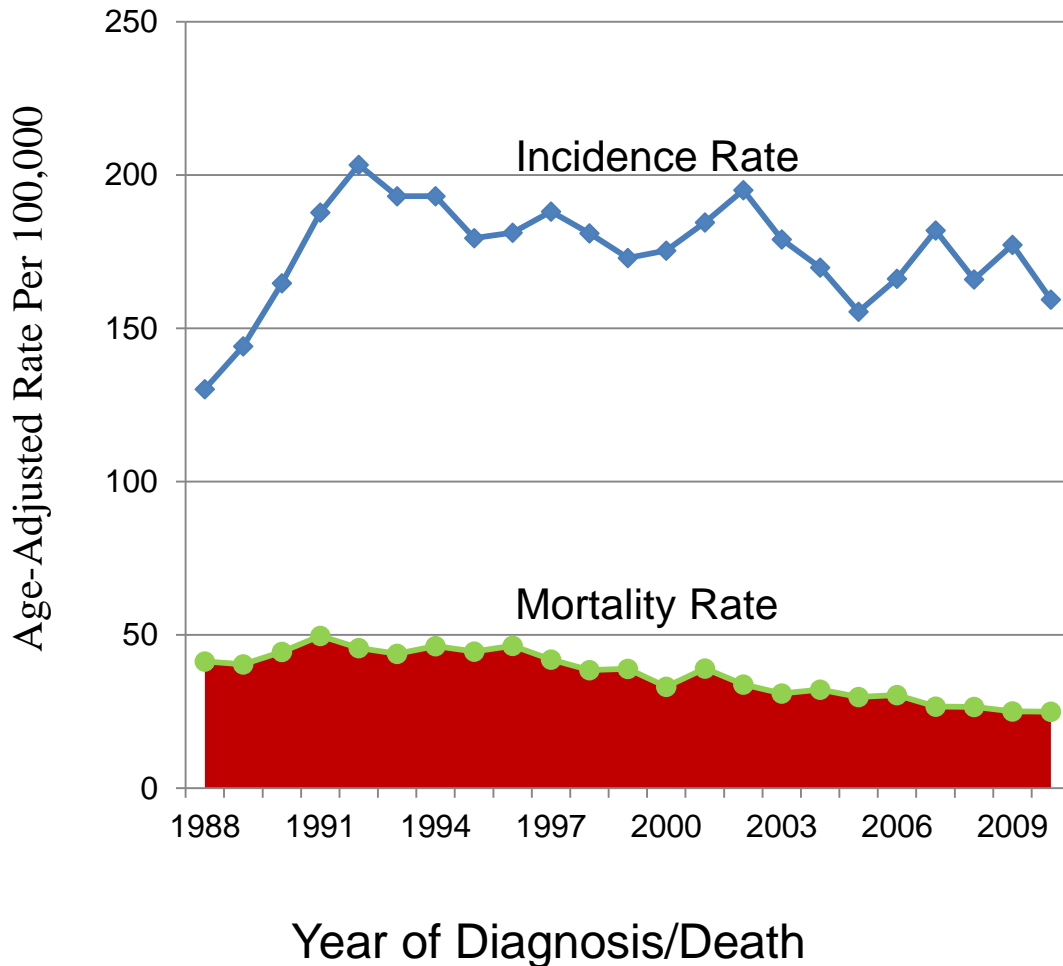
Trends of Cancer Mortality Rates^{1,2}: Prostate Cancer, 1988-2010



¹ Age-adjusted to the 2000 US standard population. ² US Mortality data source was National Center of Health Statistics (NHCS).

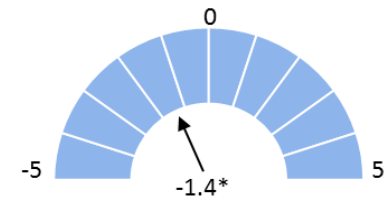
Prostate Cancer: Louisiana

Trends of Incidence and Mortality Rates; 1988-2010

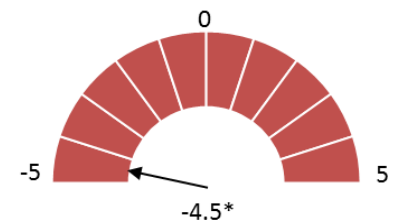


2001-2010

APC for 10-Years Age-Adjusted Incidence Trend



APC for 10-Years Age-Adjusted Mortality Trend

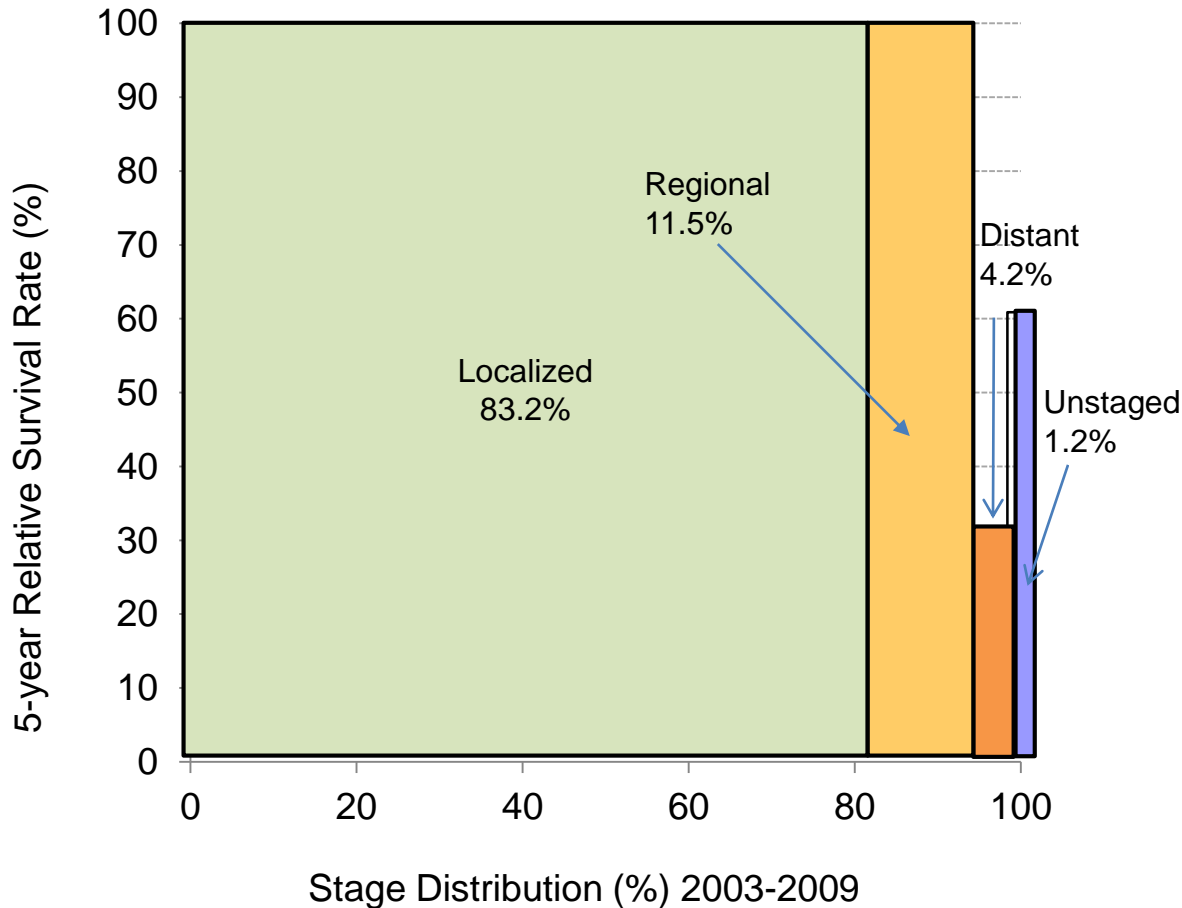


* The APC is statistically significant from 0 ($P < 0.5$)

*APCs were calculated using weighted least squares method

Prostate Cancer¹: Louisiana

5-Year Relative Survival by Stage²; 2003-2009



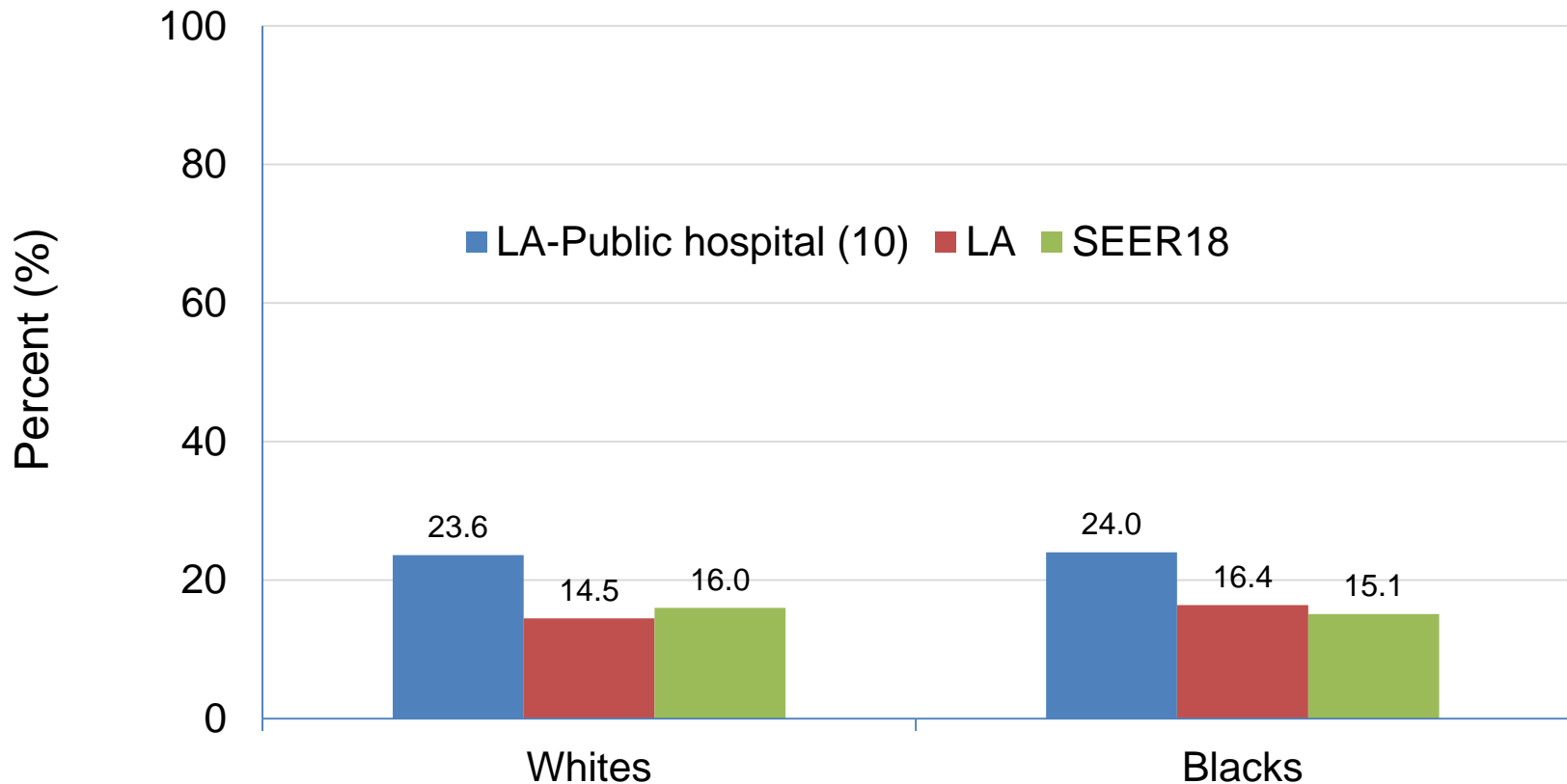
5-year relative survival

- All races: 97.0%
- Whites: 98.5%
- Blacks: 93.9%

¹ Prostate Cancer includes first primary only (sequence number 0 or 1).

² The stage distribution is based on Summary Stage 2000

Percent of Cases Diagnosed with Late Stage¹ Prostate Cancer¹ 2006-2010



¹. Late stage include regional and distant.

Editors

- Patricia A. Andrews, MPH, CTR
- Mei-Chin Hsieh, MSPH, CTR
- Brent A. Mumphrey, BS
- Beth Schmidt, MSPH
- Vivien W. Chen, PhD
- Xiang-Cheng Wu, MD, MPH, CTR

Acknowledgements

- **Hospital cancer registries** (<http://louisianatumorregistry.lsuhs.edu/>)
- **Louisiana Cancer Registrars' Association** (<http://www.lcra-usa.org/>)
- **Physicians and staff members in:**
 - Medical records offices
 - Pathology laboratories
 - Physician offices and clinics
 - Hospice programs and nursing homes
- **Regional and central offices of the Louisiana Tumor Registry**
(<http://louisianatumorregistry.lsuhs.edu/regionalregistries.html>)
- **School of Public Health, LSU Health Sciences Center–New Orleans**
- **Louisiana Cancer and Lung Trust Fund Board**
- **Coroners' offices**

Sources of LTR Funding

- National Cancer Institute, SEER Program
- National Program of Cancer Registries, CDC
- Louisiana Health Care Services Division

Questions?

- Contact:
 - LTR-info@lsuhsc.edu
 - or
 - 504/568-5757