

# Louisiana Cancer Facts & Figures, Lung & Bronchus Cancer, 2013

Louisiana Tumor Registry

Xiang-Rong Li, MD, MSPH

October, 2013

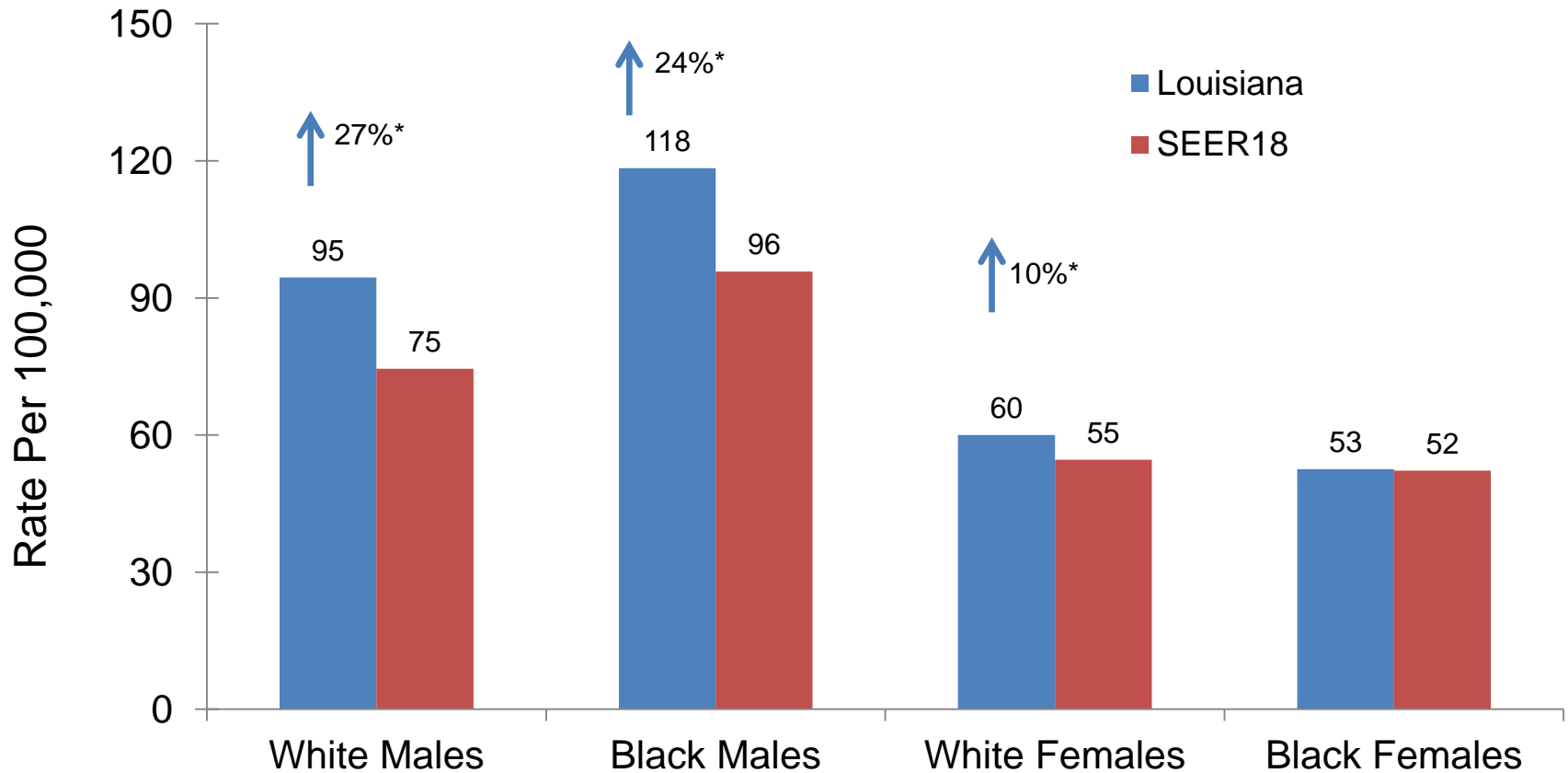
# Lung and Bronchus Cancer

Lung Cancer was the second most common cancer and the first leading cause of cancer death in Louisiana.

About 3,740 new lung cancers are expected to be diagnosed and about 2,670 patients are expected to die of lung cancer in 2013 in Louisiana<sup>1</sup>.

<sup>1</sup>. Data source: American Cancer Society, Cancer Facts & Figures 2013

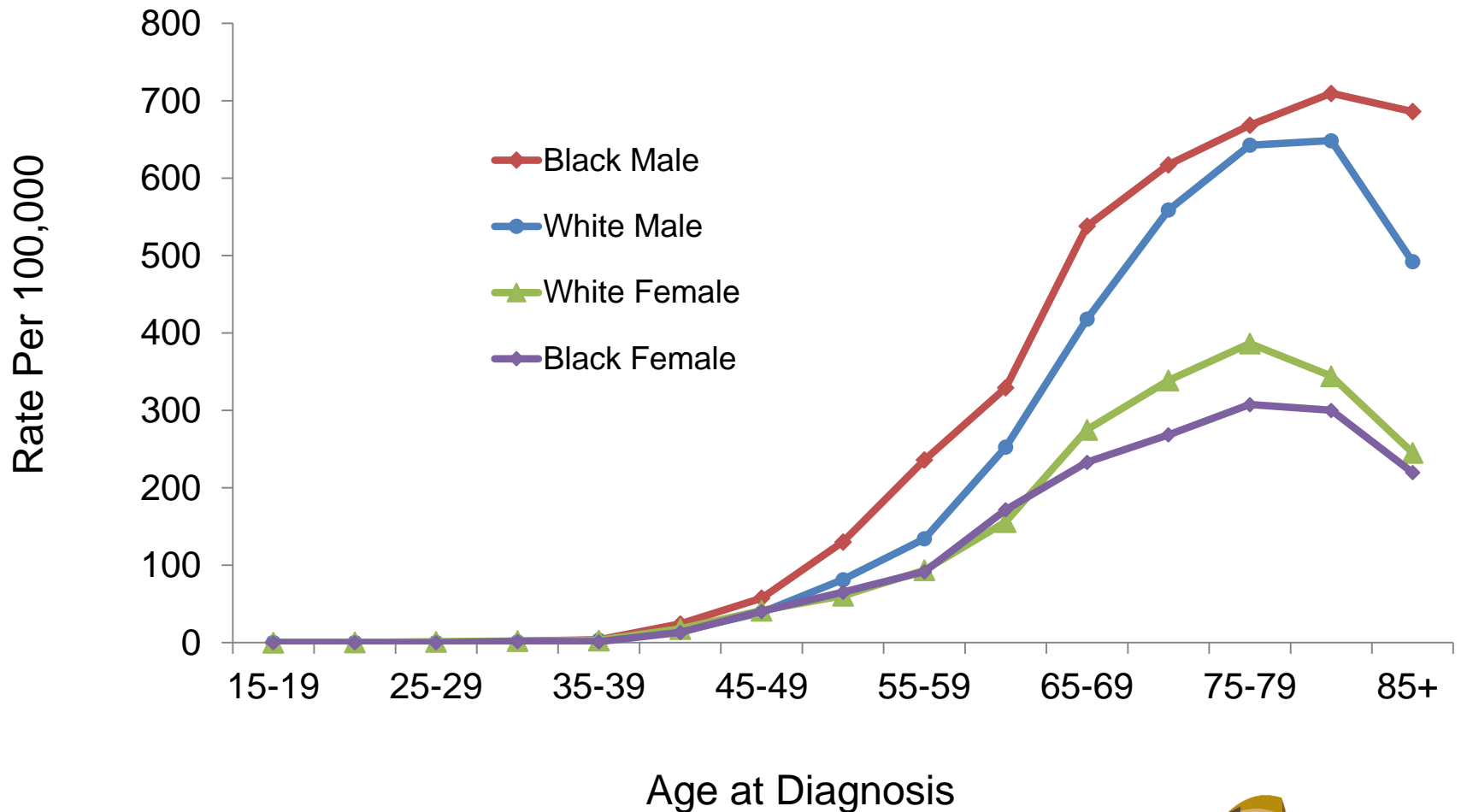
# Incidence Rates<sup>1</sup> of Lung & Bronchus, Louisiana vs. US,<sup>2</sup> 2006-2010



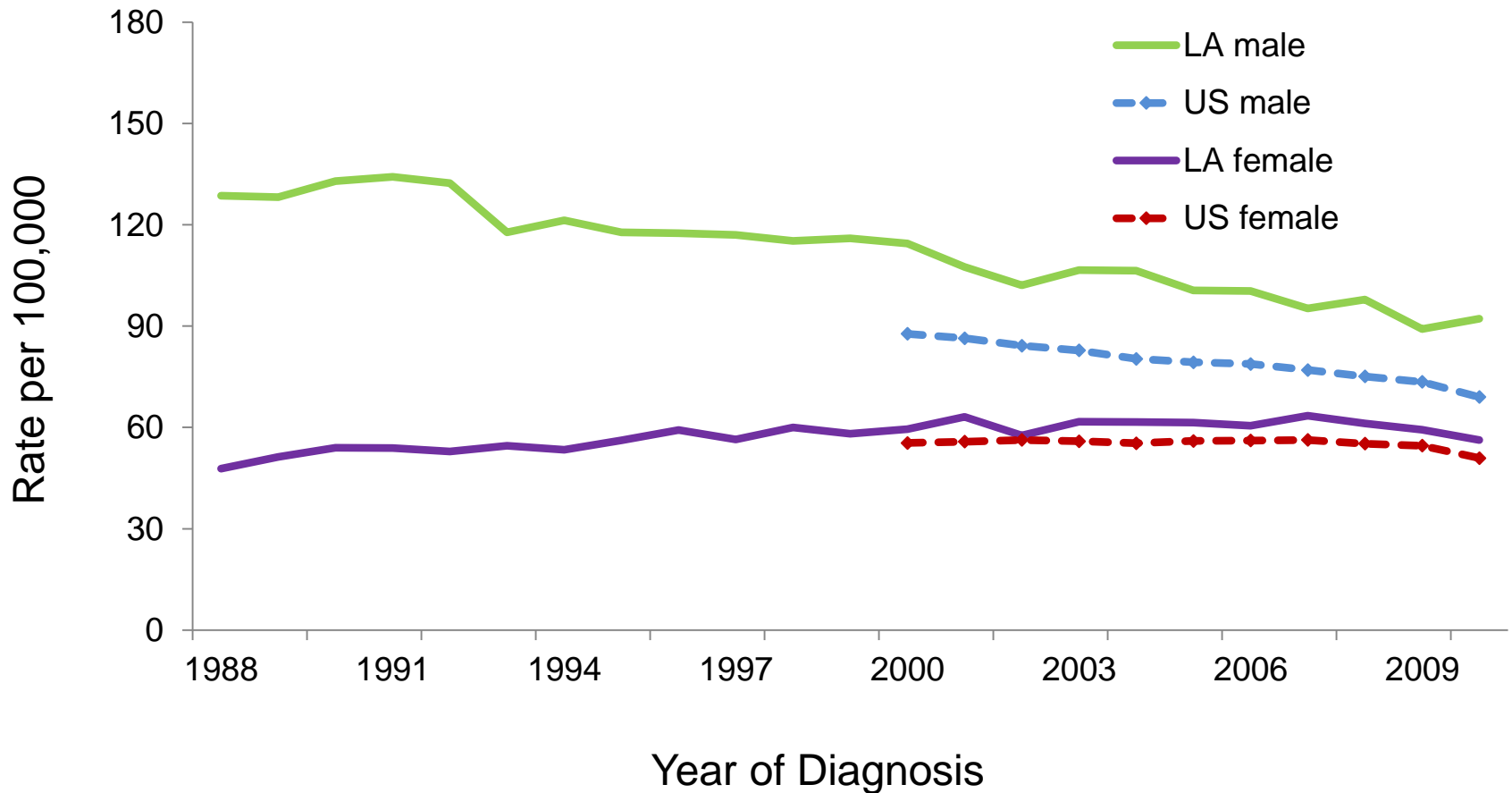
<sup>1</sup> Age-adjusted to the 2000 US standard population. <sup>2</sup> US data source was the 18 SEER registries.

\* Incidence rate of Louisiana is significantly different from that of US.

# Age-Specific Cancer Incidence Rates of Lung & Bronchus, Louisiana, 2006-2010

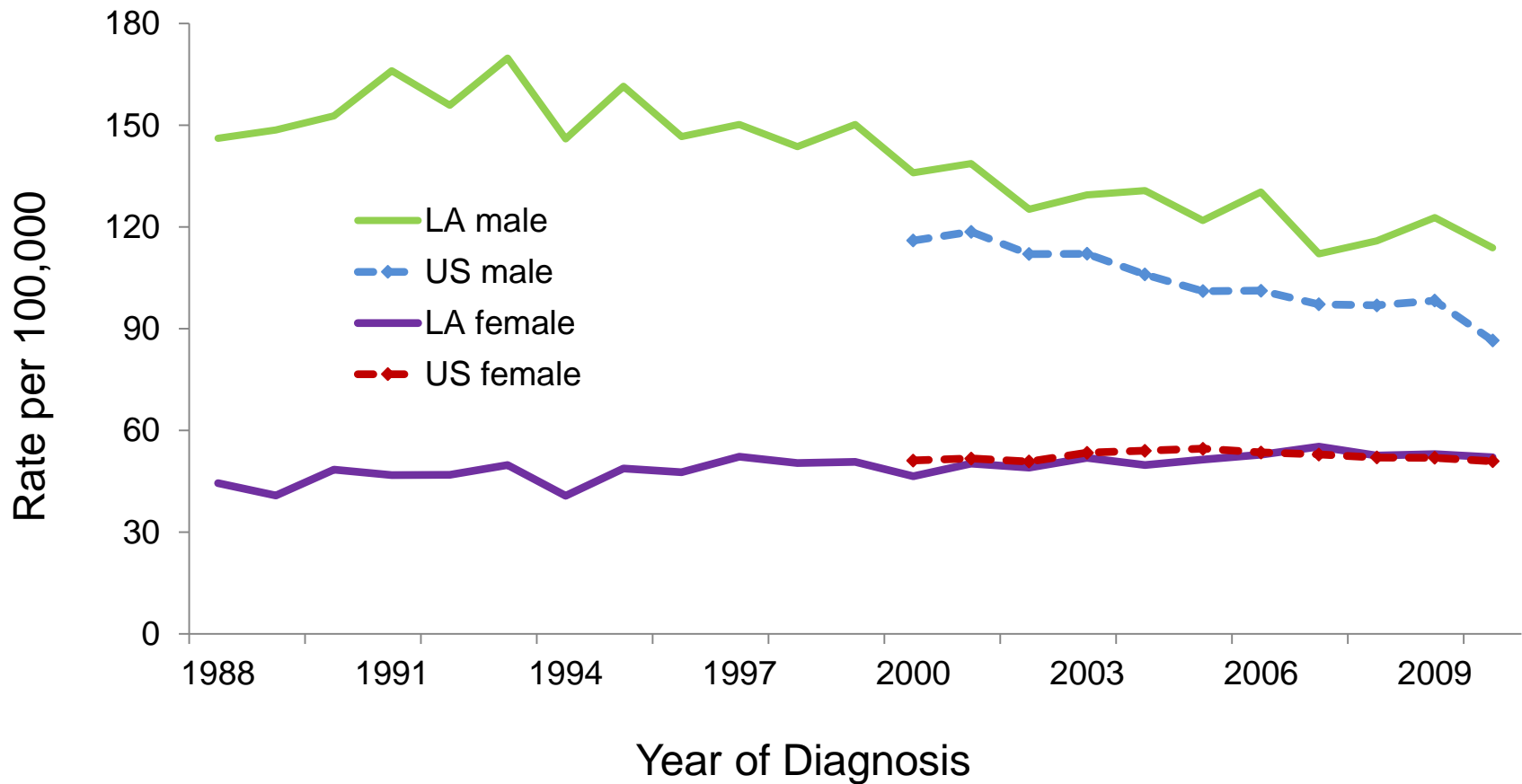


# Trend of Cancer Incidence Rate<sup>1,2</sup> Lung & Bronchus, Whites 1988-2010



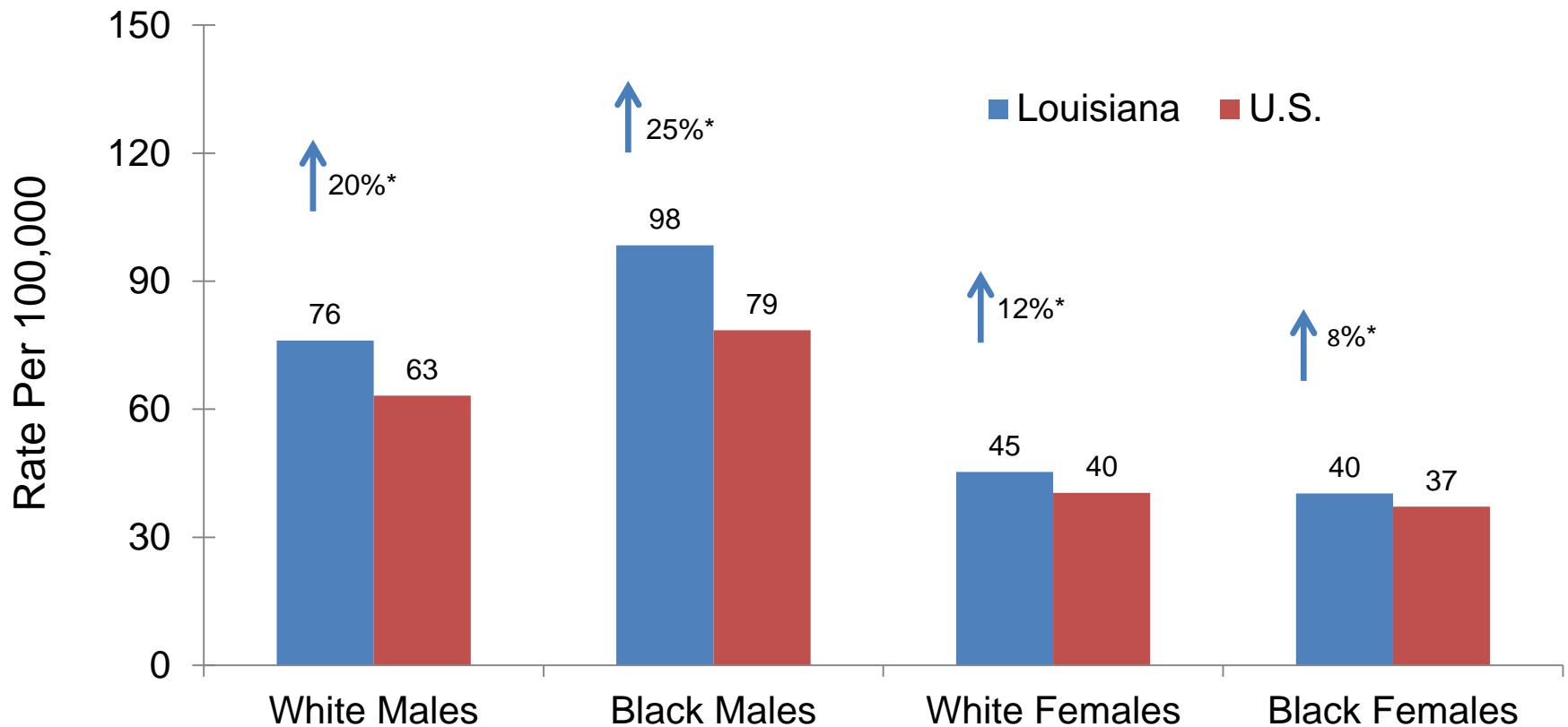
<sup>1</sup> Age-adjusted to the 2000 US standard population. <sup>2</sup> US data source was 18 SEER registries.

# Trend of Cancer Incidence Rate<sup>1,2</sup> Lung & Bronchus, Blacks 1988-2010



<sup>1</sup> Age-adjusted to the 2000 US standard population. <sup>2</sup> US data source: 18 SEER registries.

# Mortality Rates<sup>1</sup>:Lung & Bronchus Cancer, Louisiana vs. US,<sup>2</sup> 2006-2010

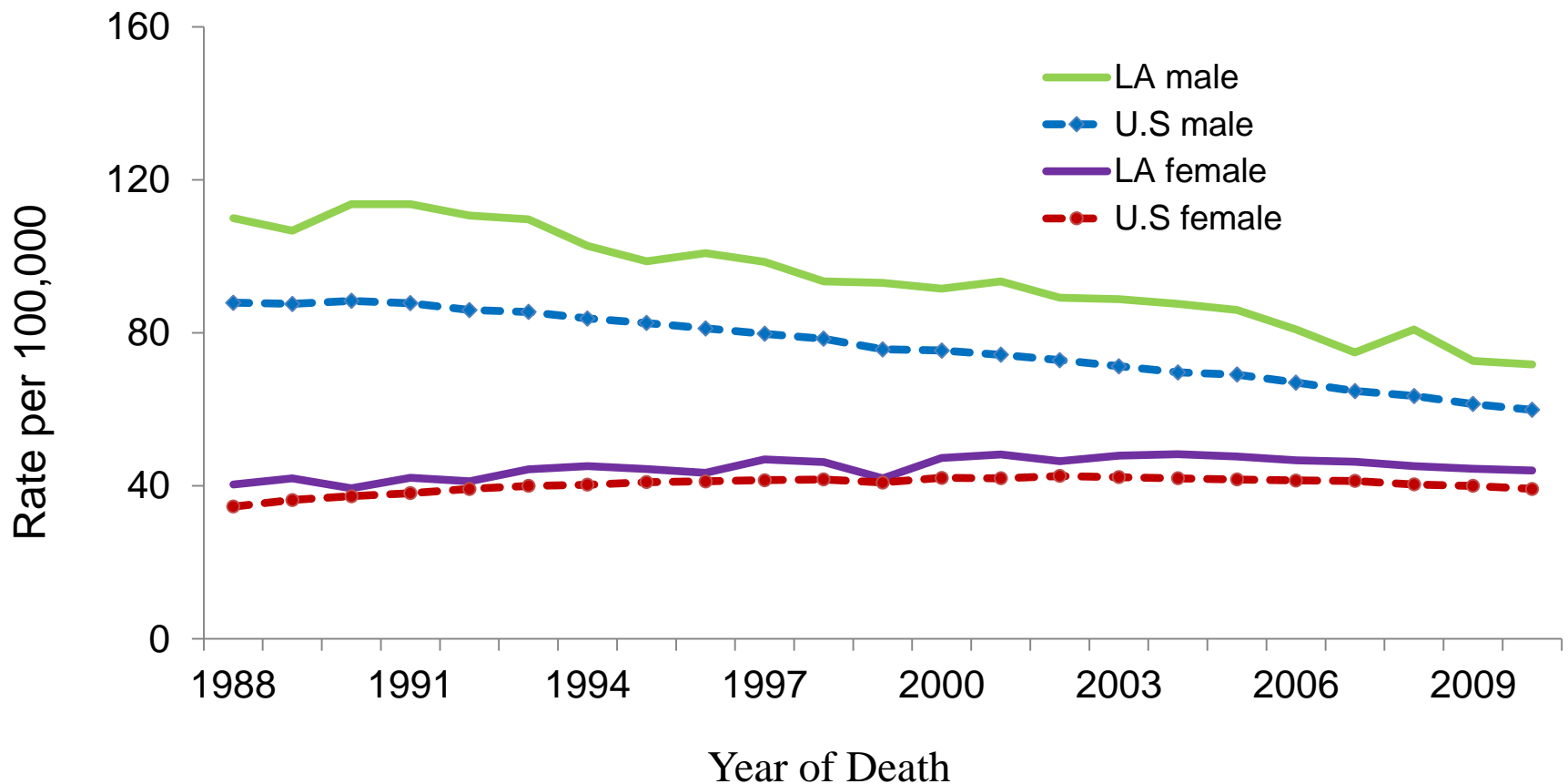


<sup>1</sup> Age-adjusted to the 2000 US standard population.

<sup>2</sup> Mortality data source was National Center of Health Statistics (NCHS).

\* Incidence rate of Louisiana is significantly different from that of US.

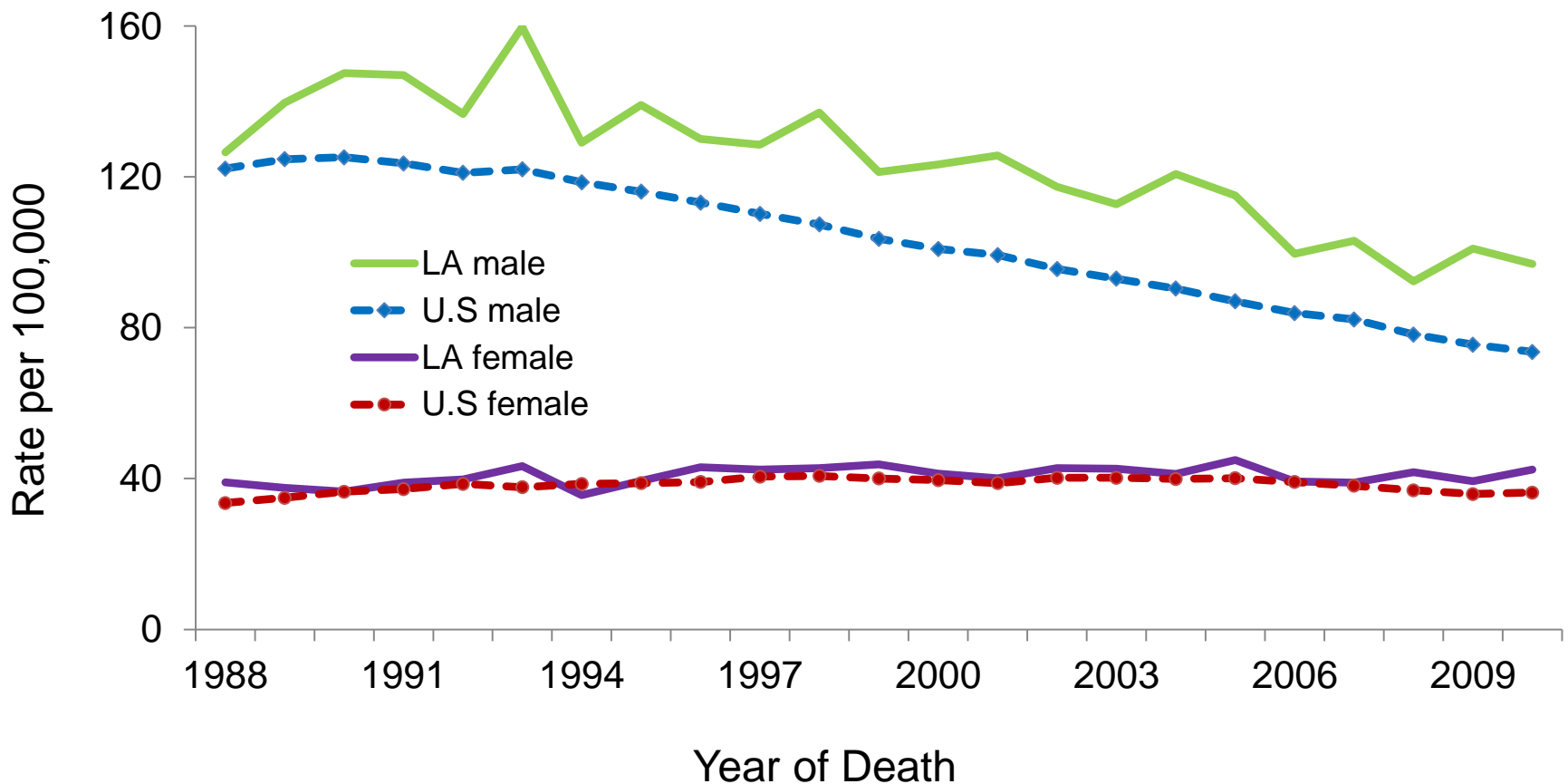
# Trends of Cancer Mortality Rates<sup>1,2</sup> Lung & Bronchus, Whites, 1988-2010



<sup>1</sup> Age-adjusted to the 2000 US standard population. <sup>2</sup> Data source: National Center of Health Statistics (NCHS).

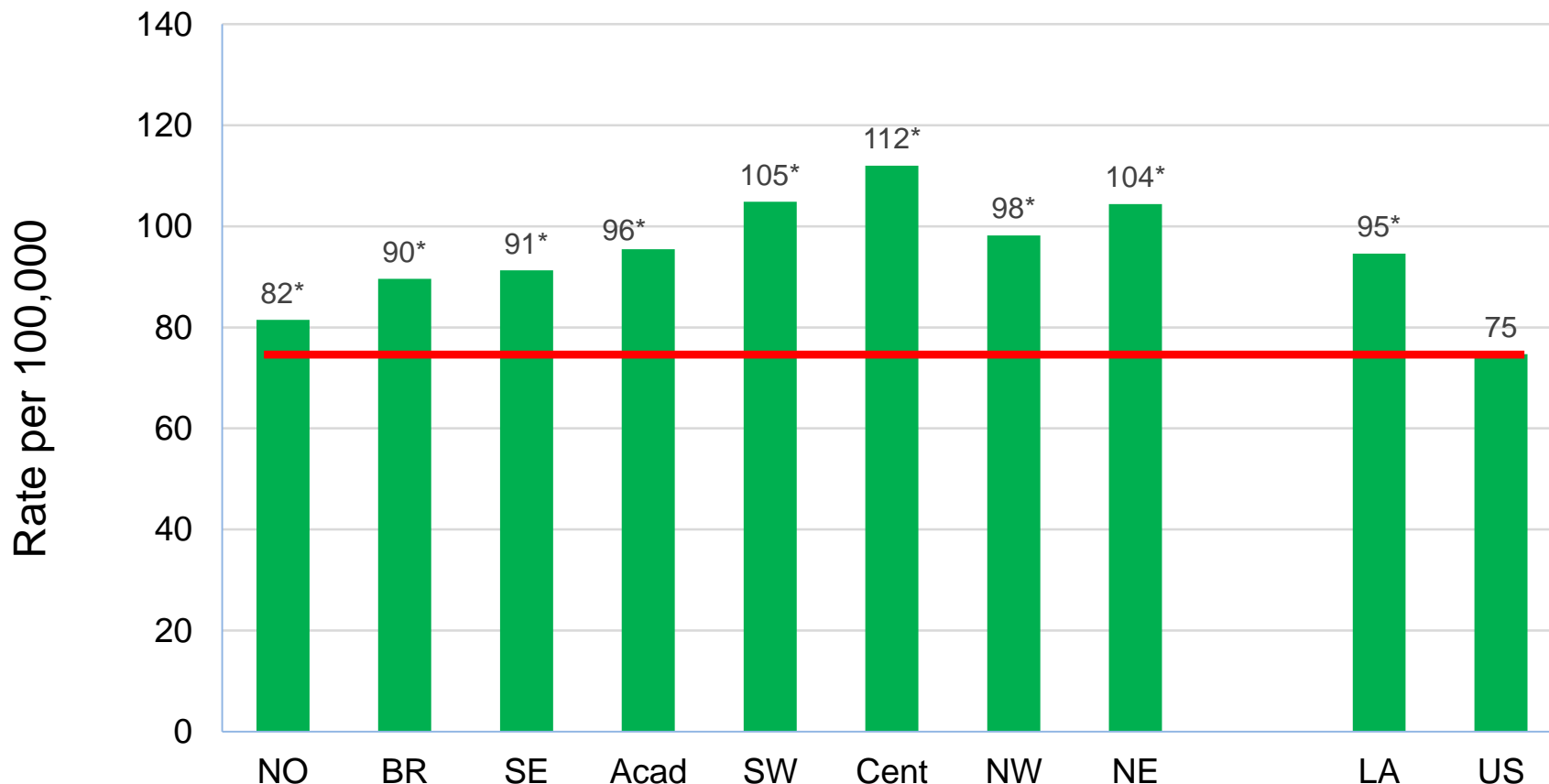


# Trends of Cancer Mortality Rates<sup>1,2</sup> Lung & Bronchus, Blacks, 1988-2010



<sup>1</sup> Age-adjusted to the 2000 US standard population. <sup>2</sup> Data source: National Center of Health Statistics (NCHS).

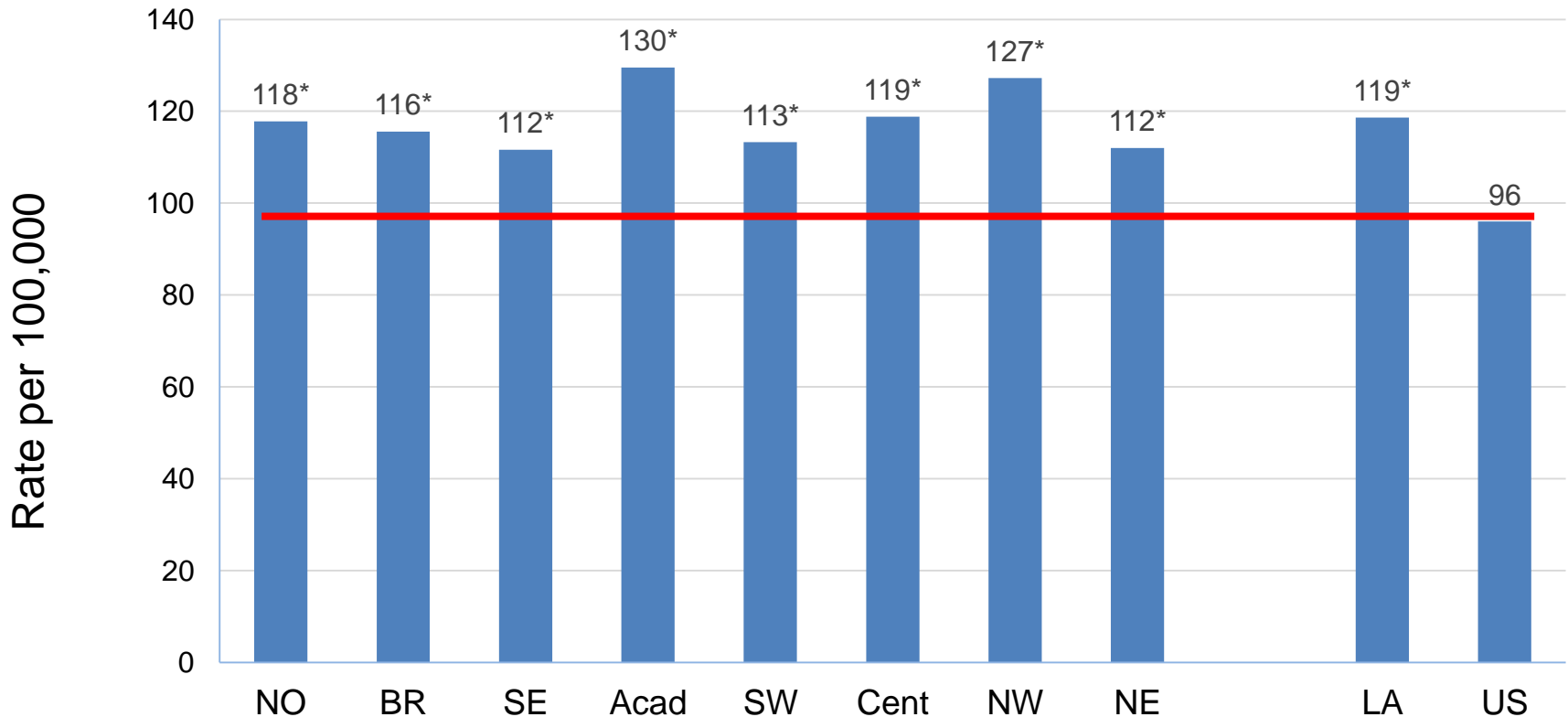
# Lung Cancer Incidence<sup>1,2</sup> by Louisiana Region: White Males, 2006-2010



<sup>1</sup> Age-adjusted to the 2000 US standard population. <sup>2</sup> Data source for US was the 18 SEER registries.

\* Incidence rate of regions/Louisiana is significantly different from that of US.

# Lung Cancer Incidence<sup>1</sup> by Louisiana Region: Black Males, 2006-2010

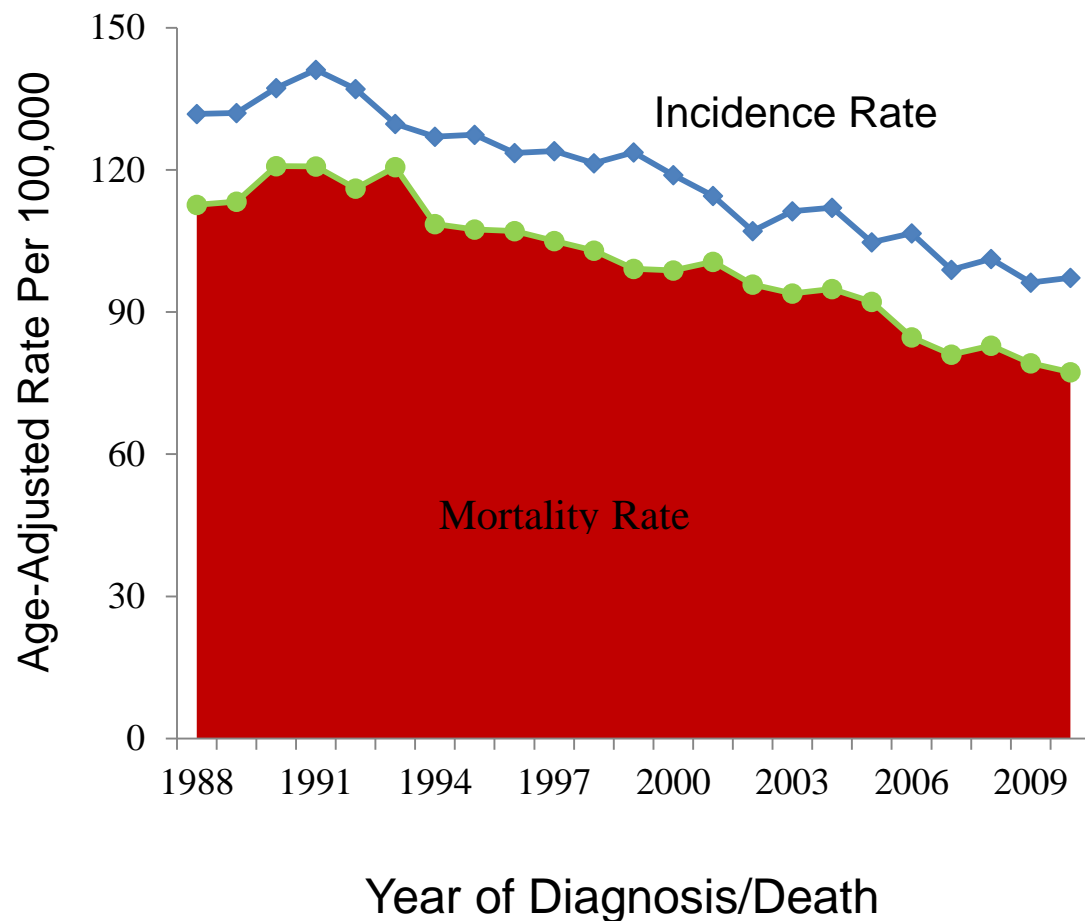


<sup>1</sup> Age-adjusted to the 2000 US standard population. <sup>2</sup> Data source for US was the 18 SEER registries.

\* Incidence rate of regions/Louisiana is significantly different from that of US.

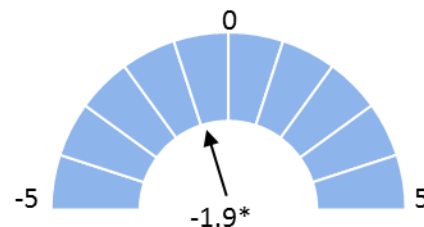
# Lung and Bronchus: Louisiana Males

## Trends of Incidence and Mortality Rates; 1988-2010

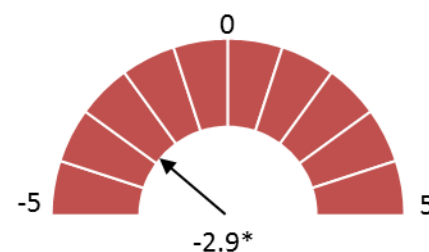


2001-2010

APC for 10-Years Age-Adjusted Incidence Trend



APC for 10-Years Age-Adjusted Mortality Trend

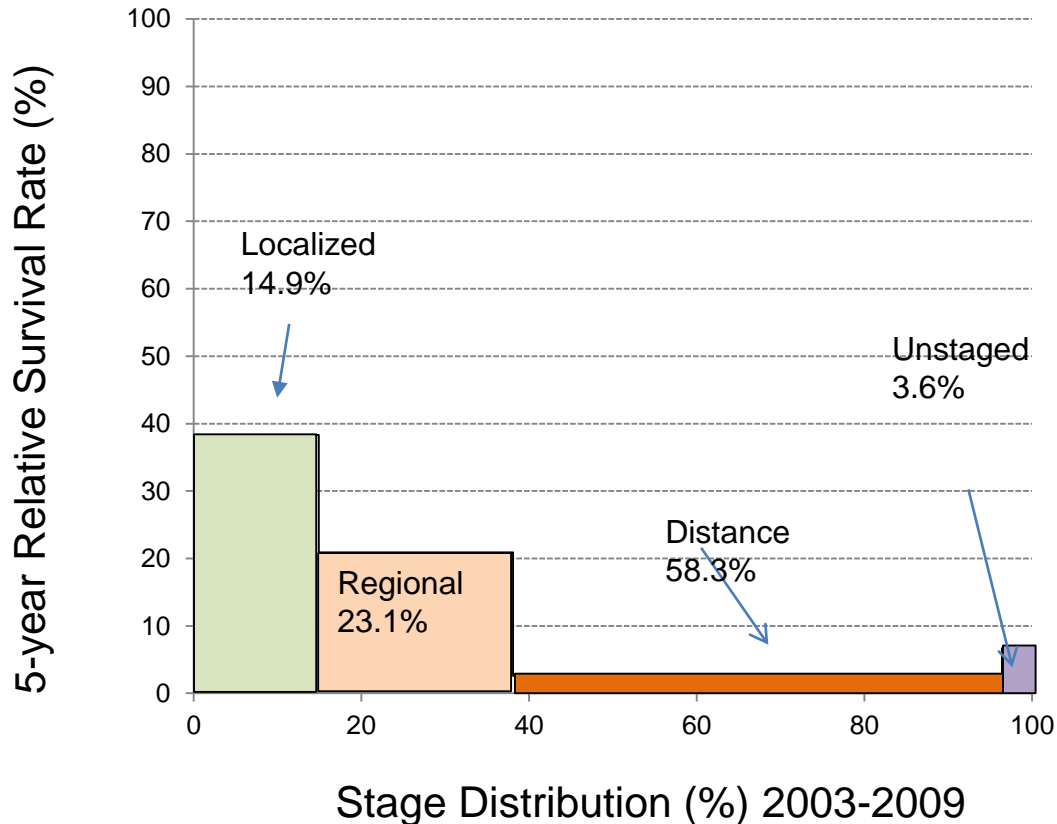


\* The APC is statistically significant from 0 (P<0.5)

APC: Average Annual Percent Change

# Lung and Bronchus<sup>1</sup>: Louisiana Males

## 5-Year Relative Survival by Stage<sup>2</sup>; 2003-2009



### 5-year relative survival

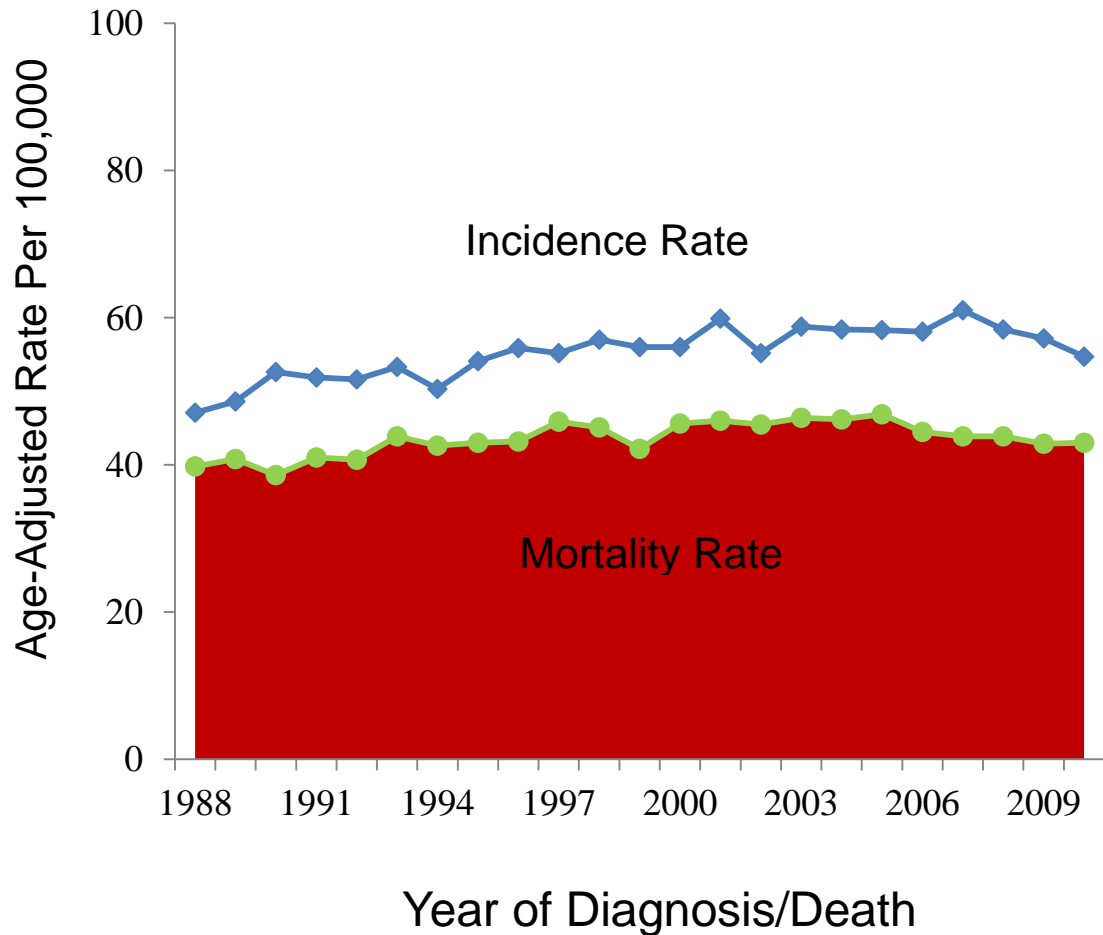
- All races: 12.2%
- Whites: 13.0%
- Blacks: 10.4%

<sup>1</sup> Lung and Bronchus cancer includes first primary only (sequence number 0 or 1).

<sup>2</sup> The stage distribution is based on Summary Stage 2000

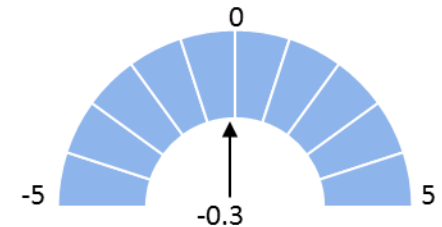
# Lung and Bronchus: Louisiana Females

## Trends of Incidence and Mortality Rates; 1988-2010

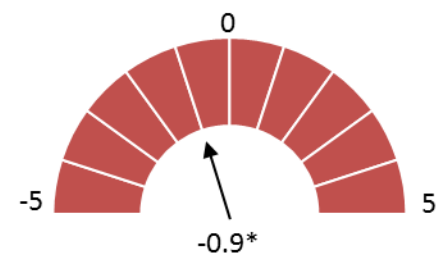


2001-2010

APC for 10-Years Age-Adjusted Incidence Trend



APC for 10-Years Age-Adjusted Mortality Trend

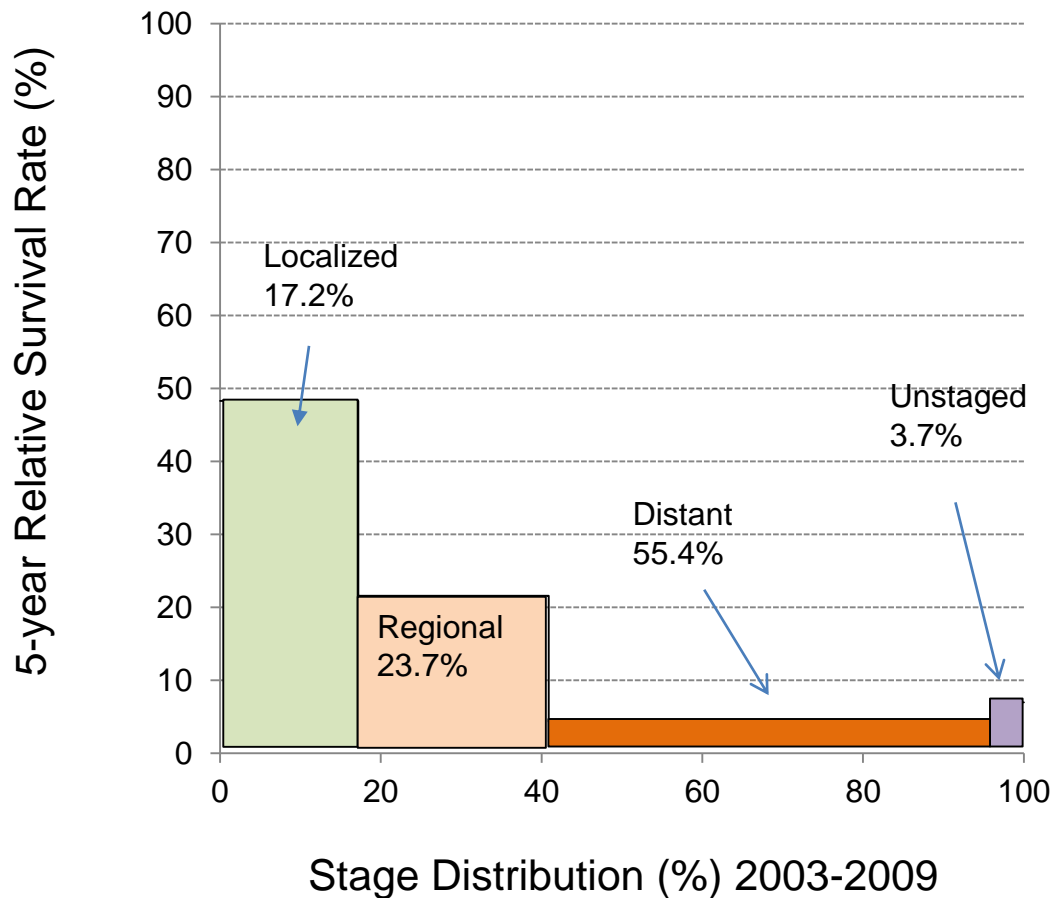


\* The APC is statistically significant from 0 ( $P < 0.5$ )

APC: Average Annual Percent Change

# Lung and Bronchus<sup>1</sup>: Louisiana Females

## 5-Year Relative Survival by Stage<sup>2</sup>; 2003-2009



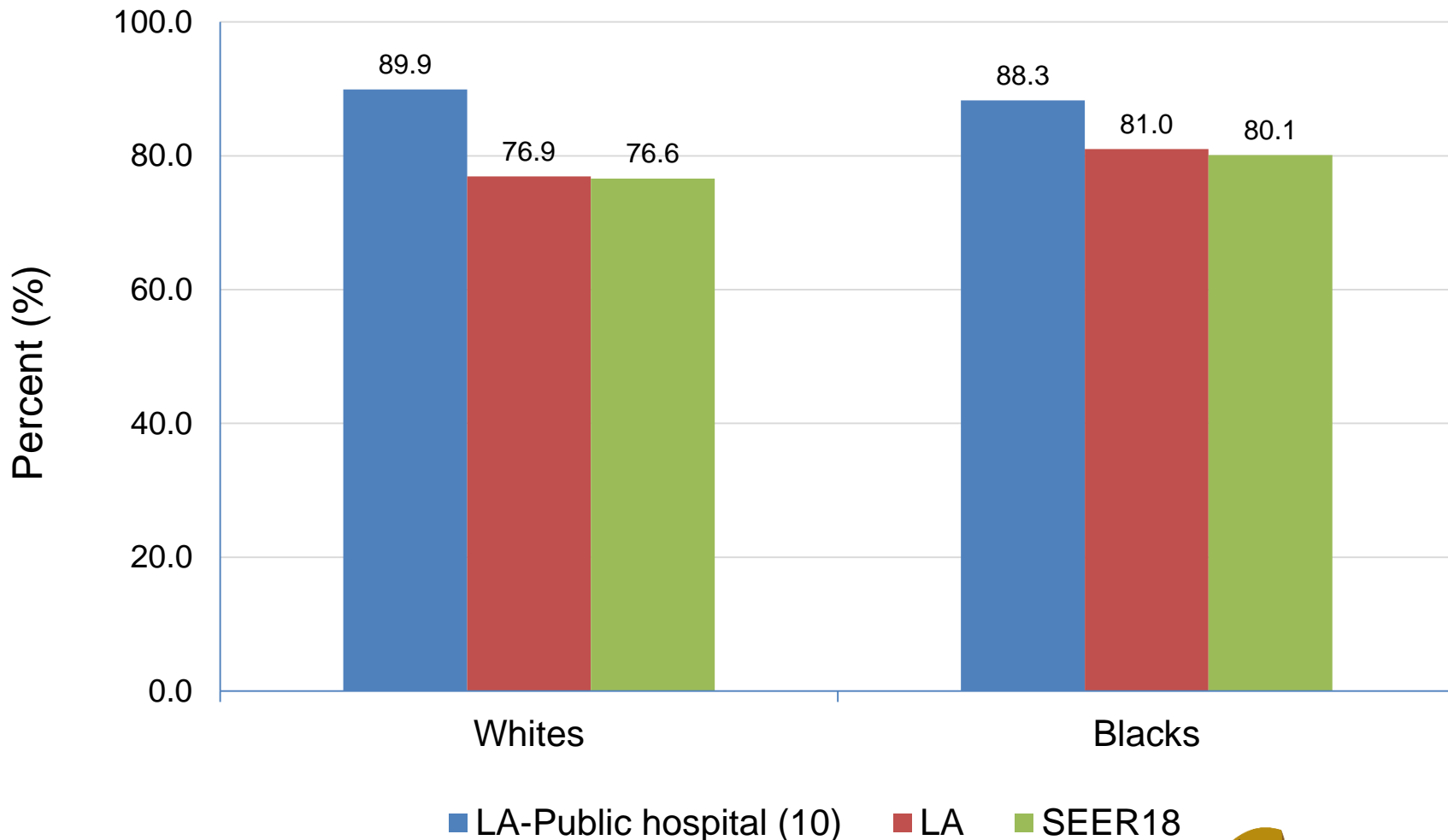
### 5-year relative survival

- All races: 16.0%
- Whites: 16.9%
- Blacks: 12.7%

<sup>1</sup> Lung and Bronchus cancer includes first primary only (sequence number 0 or 1).

<sup>2</sup> The stage distribution is based on Summary Stage 2000

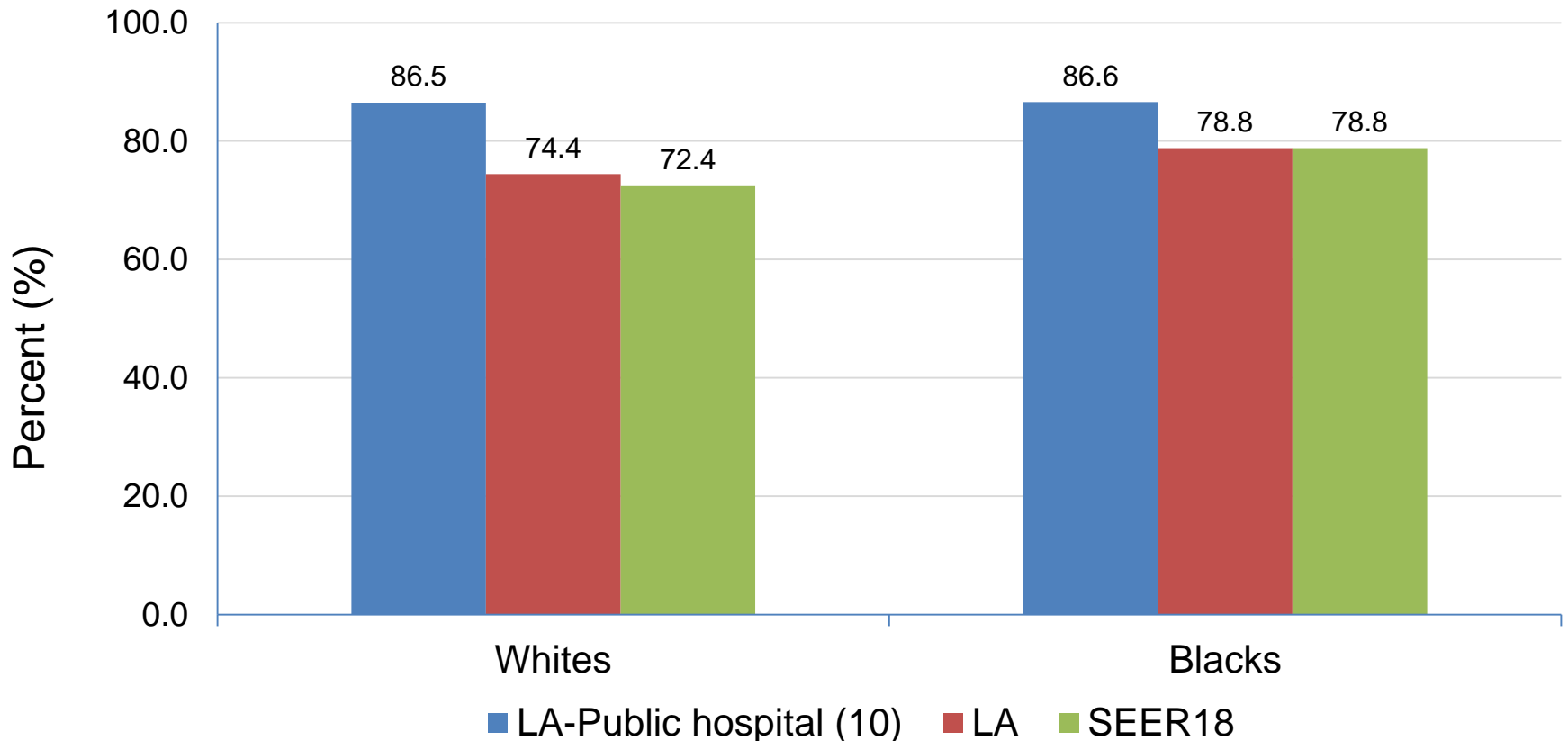
# Percent of Cases Diagnosed at Late Stage<sup>1</sup>, Lung & Bronchus Cancer, Males, 2006-2010



<sup>1</sup>. Late stage included regional and distant diseases.



# Percent of Cases Diagnosed with Late Stage<sup>1</sup>, Lung & Bronchus, Females 2006-2010



<sup>1</sup>. Late stage included regional and distant diseases.

# Editors

- Patricia A. Andrews, MPH, CTR
- Mei-Chin Hsieh, MSPH, CTR
- Brent A. Mumphrey, BS
- Beth Schmidt, MSPH
- Vivien W. Chen, PhD
- Xiang-Cheng Wu, MD, MPH, CTR

# Acknowledgements

- **Hospital cancer registries** (<http://louisianatumorregistry.lsuhs.edu/>)
- **Louisiana Cancer Registrars' Association** (<http://www.lcra-usa.org/>)
- **Physicians and staff members in:**
  - Medical records offices
  - Pathology laboratories
  - Physician offices and clinics
  - Hospice programs and nursing homes
- **Regional and central offices of the Louisiana Tumor Registry**  
(<http://louisianatumorregistry.lsuhs.edu/regionalregistries.html>)
- **School of Public Health, LSU Health Sciences Center–New Orleans**
- **Louisiana Cancer and Lung Trust Fund Board**
- **Coroners' offices**

# Sources of LTR Funding

- National Cancer Institute, SEER Program
- National Program of Cancer Registries, CDC
- Louisiana Health Care Services Division

# Questions?

- Contact:
  - [LTR-info@lsuhsc.edu](mailto:LTR-info@lsuhsc.edu)
    - or
    - 504/568-5757