

Louisiana Cancer Facts & Figures, Colon and Rectum Cancer, 2013

Louisiana Tumor Registry

Xiang-Rong Li, MD, MSPH

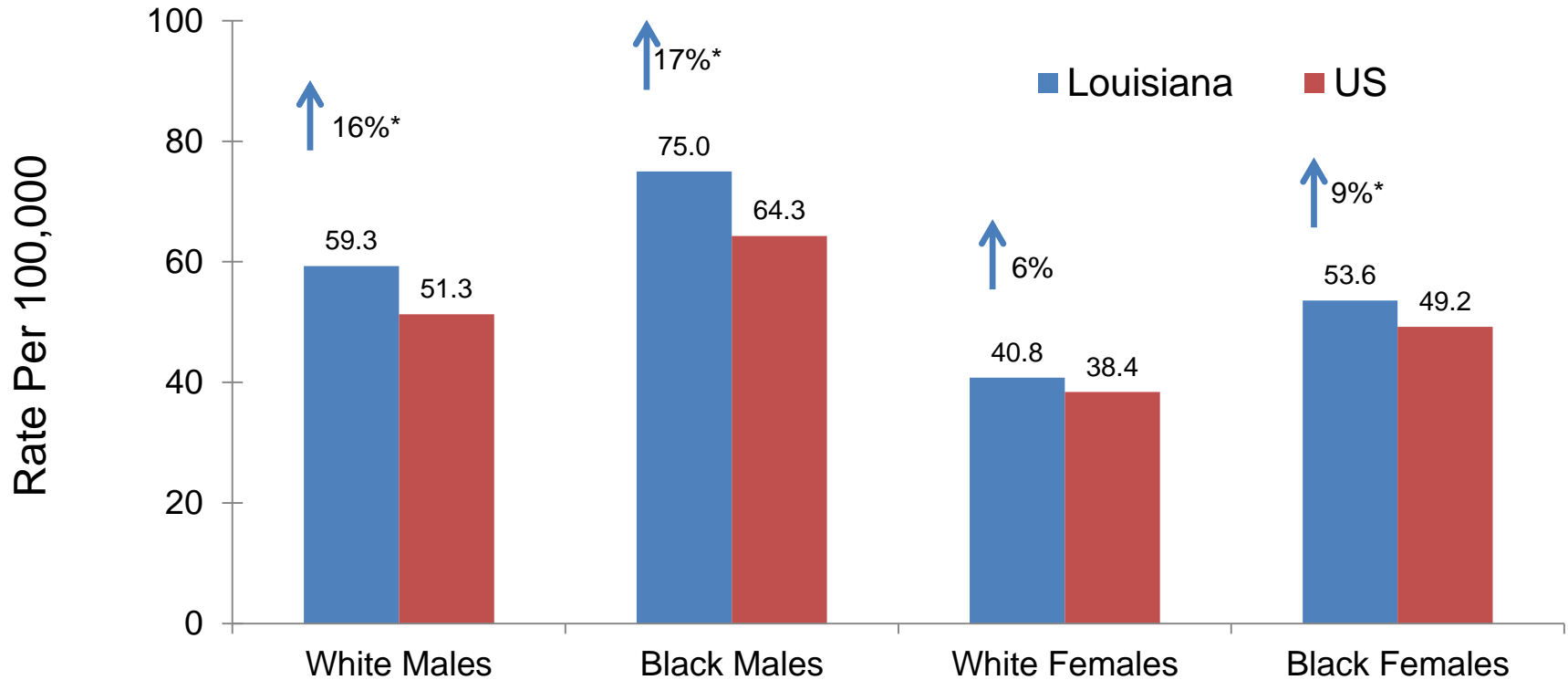
October, 2013

Colon and Rectum Cancer

- Colon and rectum cancer was the fourth most common cancer and the second leading cause of cancer death in Louisiana.
- About 2,400 new colon and rectum cancers are expected to be diagnosed and about 860 patients are expected to die of colon and rectum cancer in Louisiana in 2013¹.

¹. Data source: American Cancer Society, Cancer Facts & Figures 2013

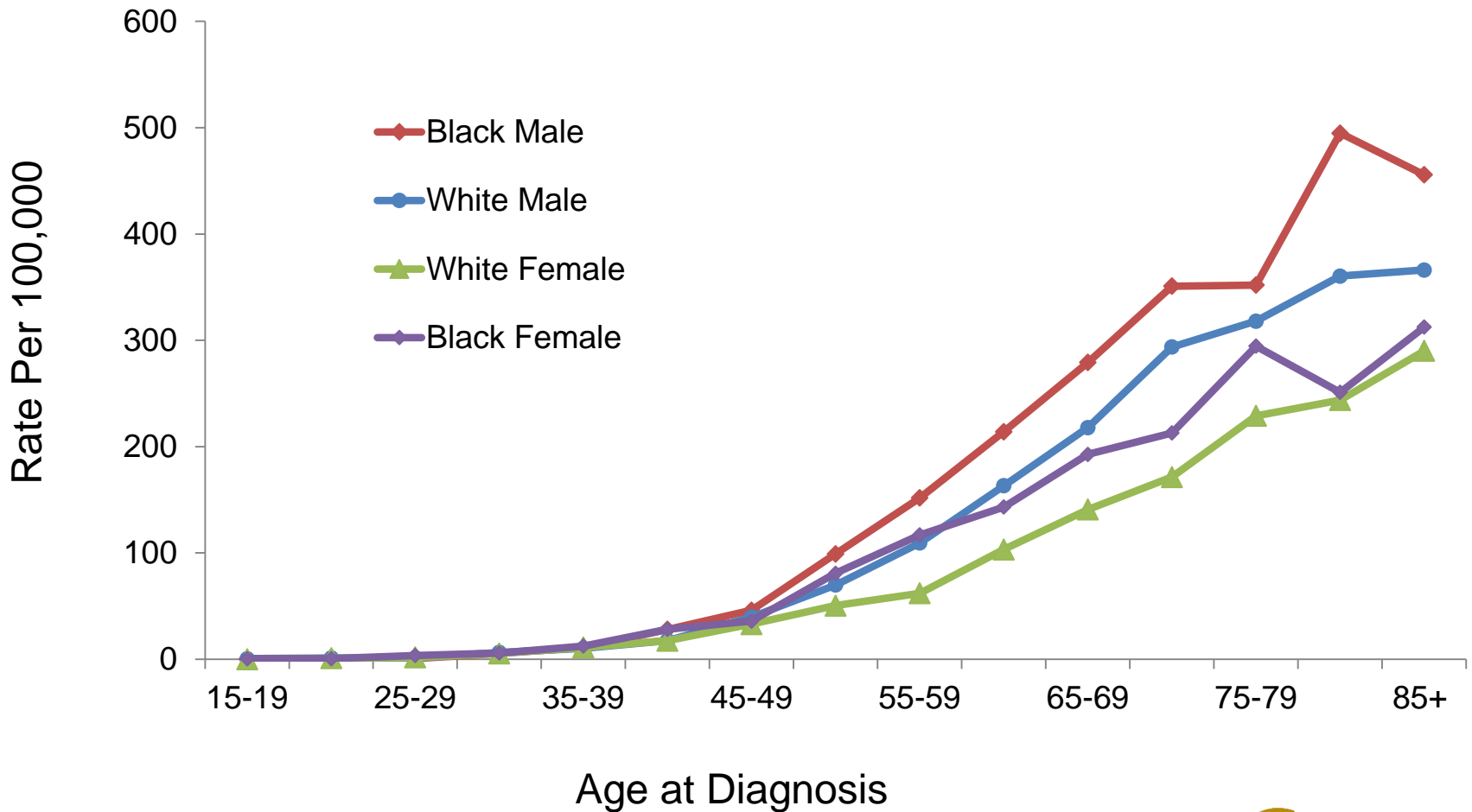
Incidence Rates¹ of Colon and Rectum, Louisiana vs. US,² 2006-2010



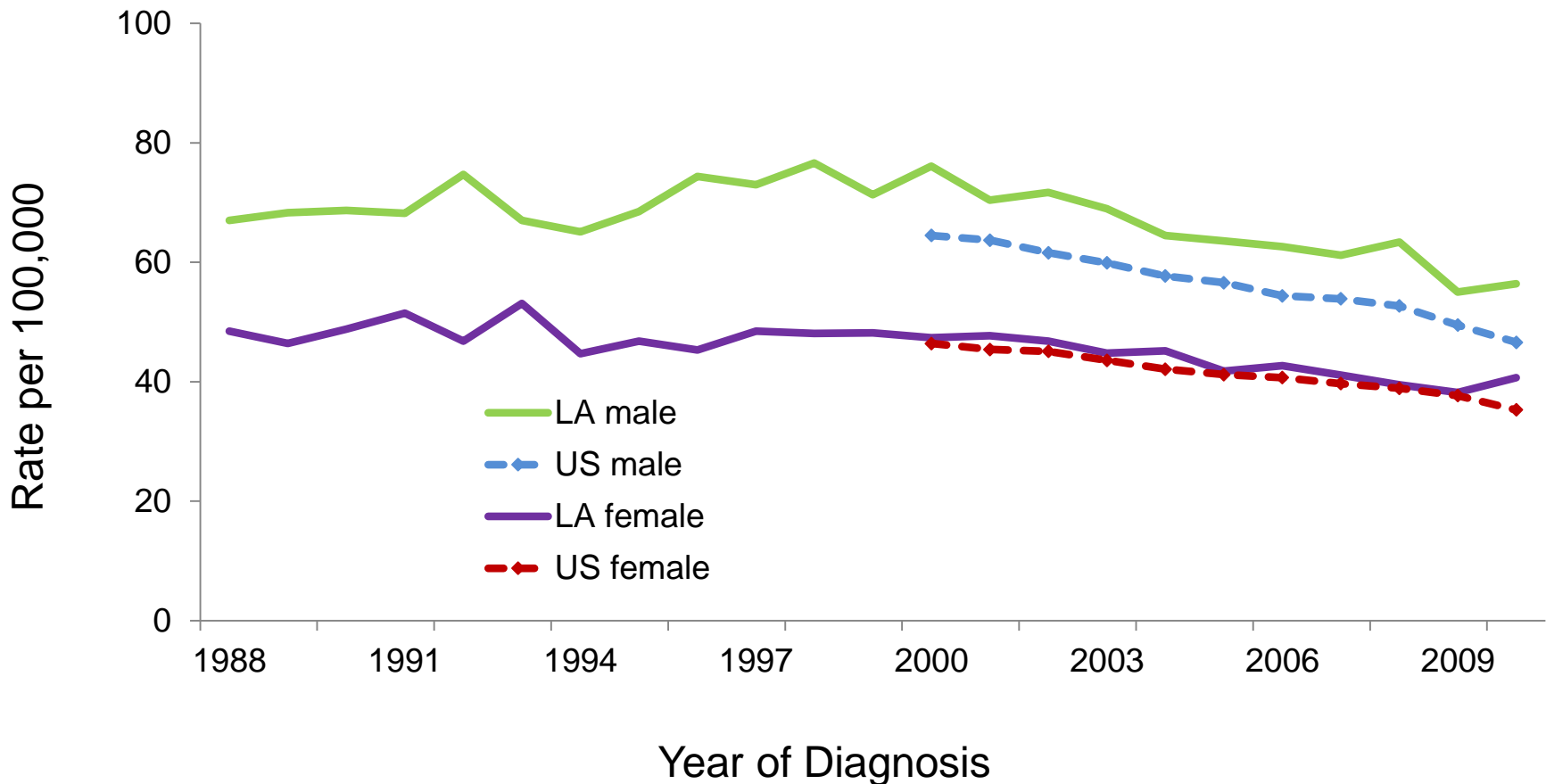
¹ Age-adjusted to the 2000 US standard population. ² Data source: 18 SEER registries.

* Incidence rate of Louisiana is significantly different from that of US.

Age-Specific Cancer Incidence Rates of Colon and Rectum, Louisiana, 2006-2010

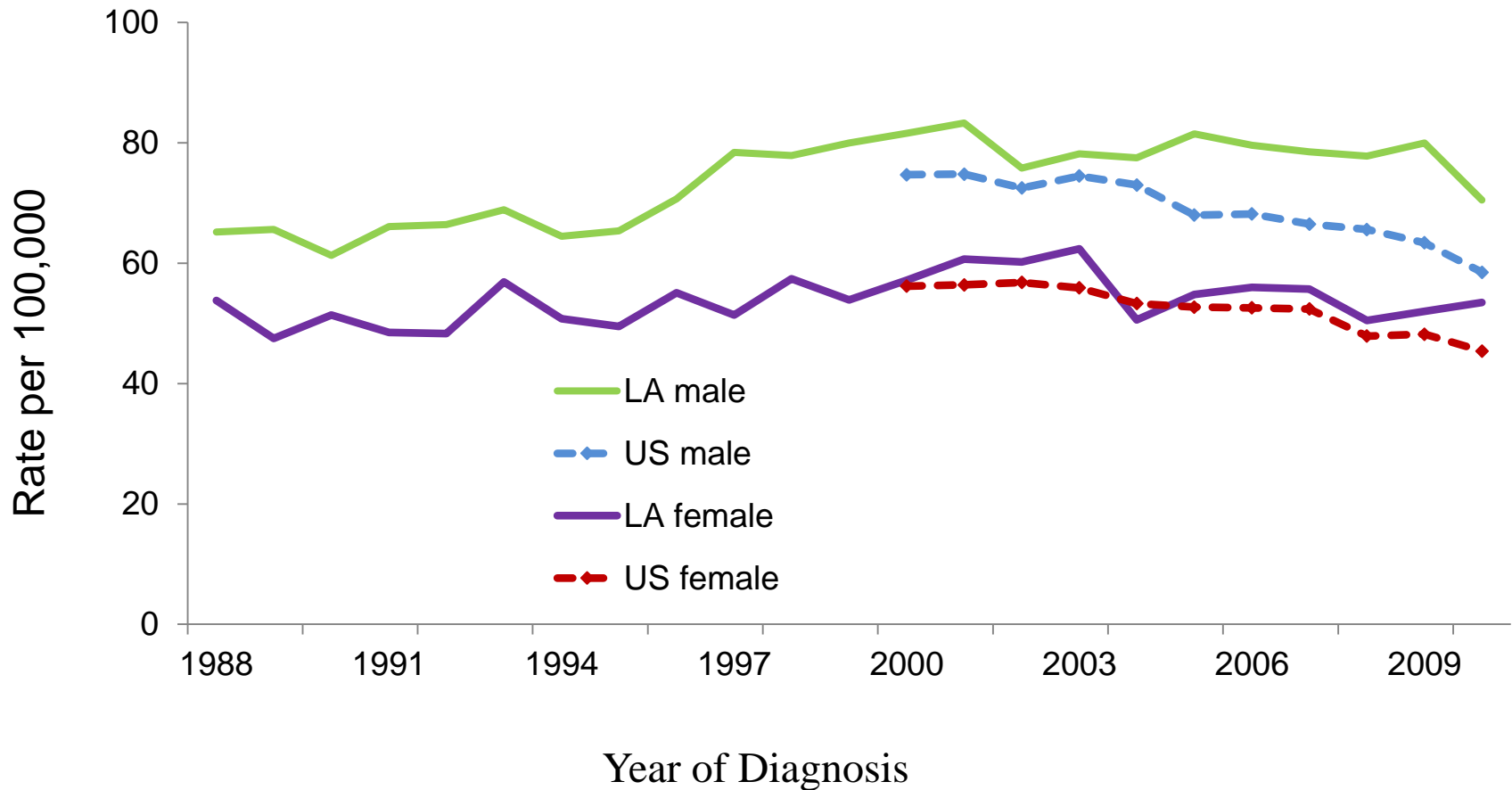


Trends of Cancer Incidence Rates^{1,2} Colon and Rectum, Whites, 1988-2010



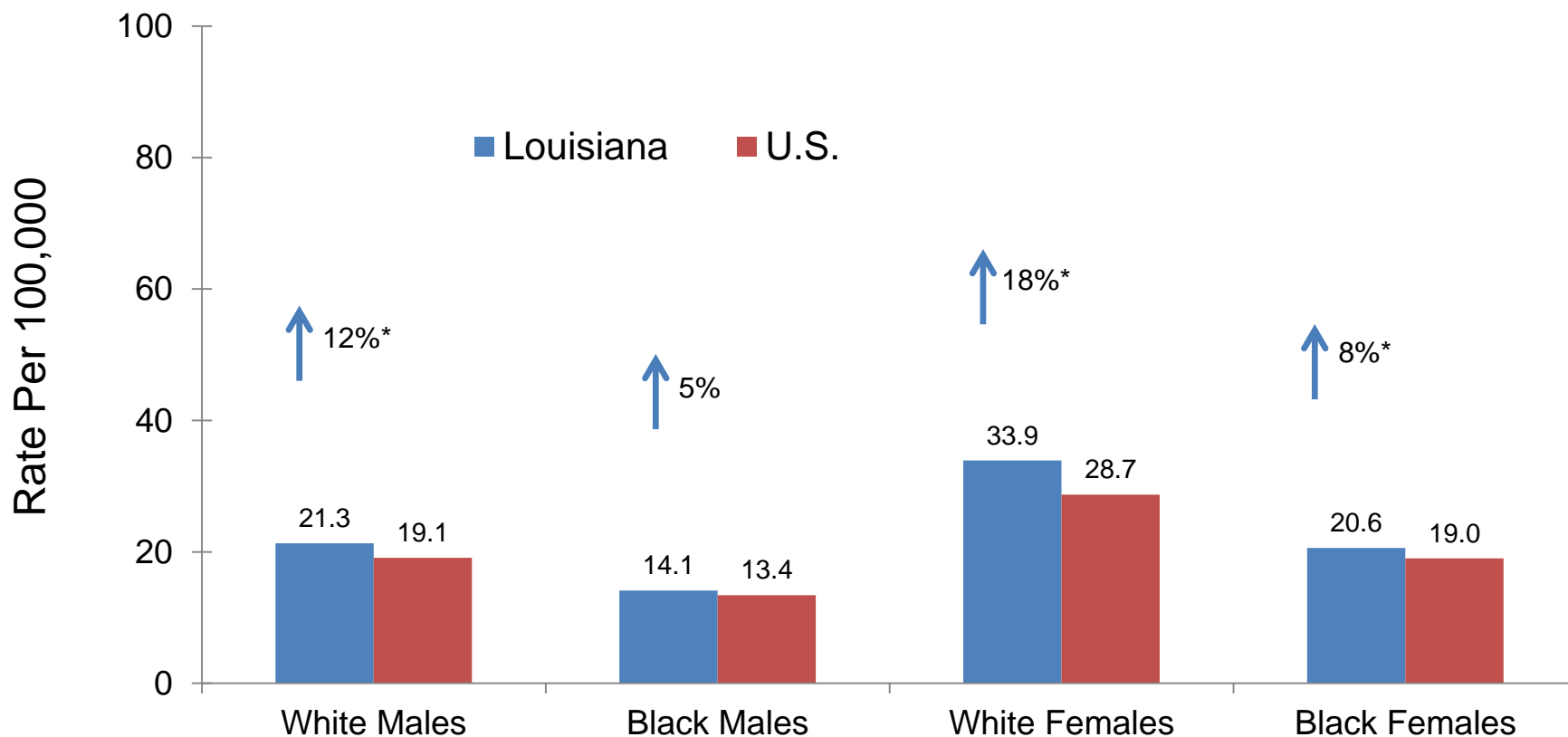
¹ Age-adjusted to the 2000 US standard population. ² US data source: 18 SEER registries.

Trend of Incidence Rate^{1,2} Colon and Rectum Cancer, Blacks 1988-2010



¹ Age-adjusted to the 2000 US standard population. ² US data source: 18 SEER registries.

Mortality Rates¹: Colon and Rectum Cancer Louisiana vs. US,² 2006-2010



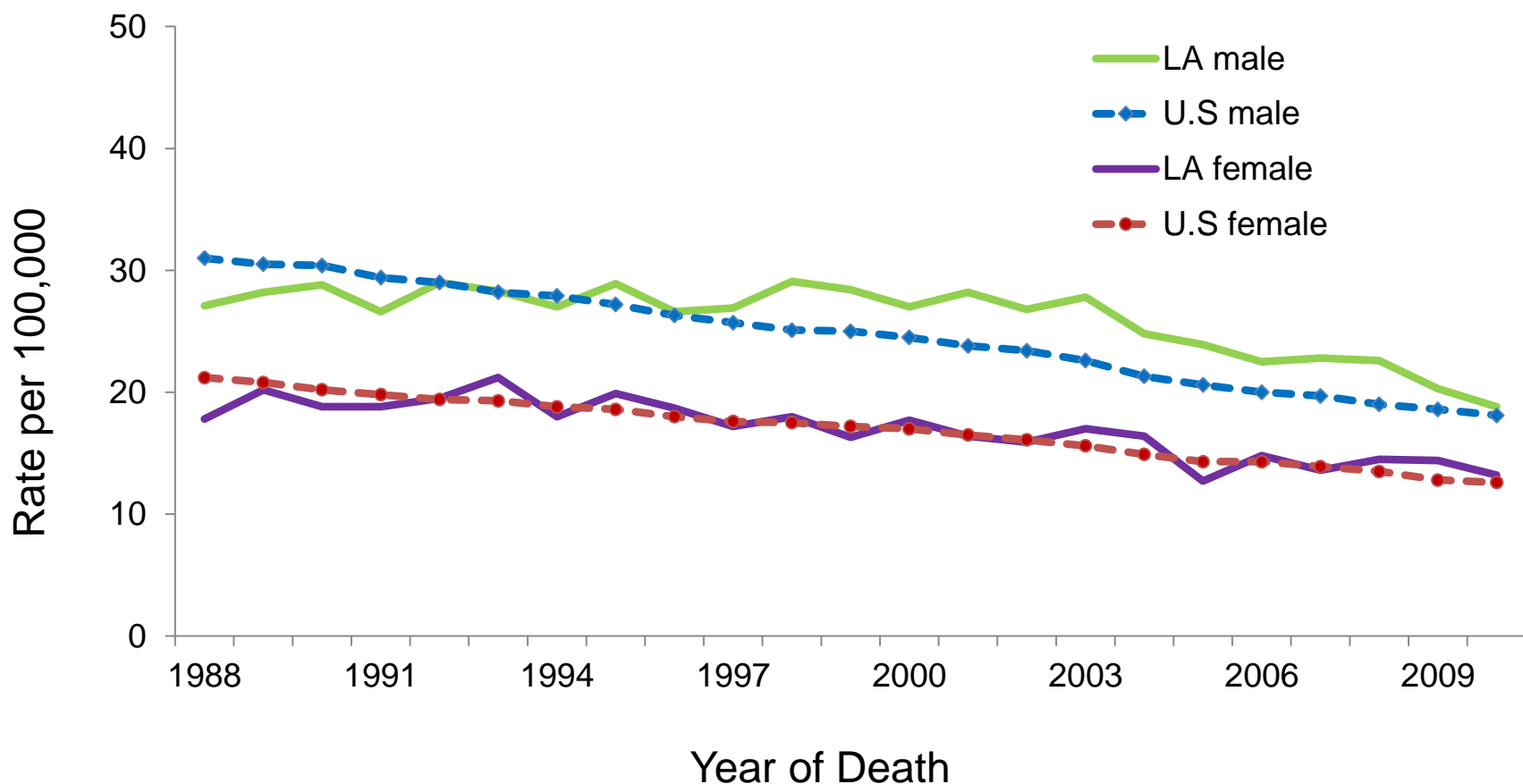
¹ Age-adjusted to the 2000 US standard population.

² Mortality data source was National Center of Health Statistics (NCHS).

* Incidence rate of Louisiana is significantly different from that of US.

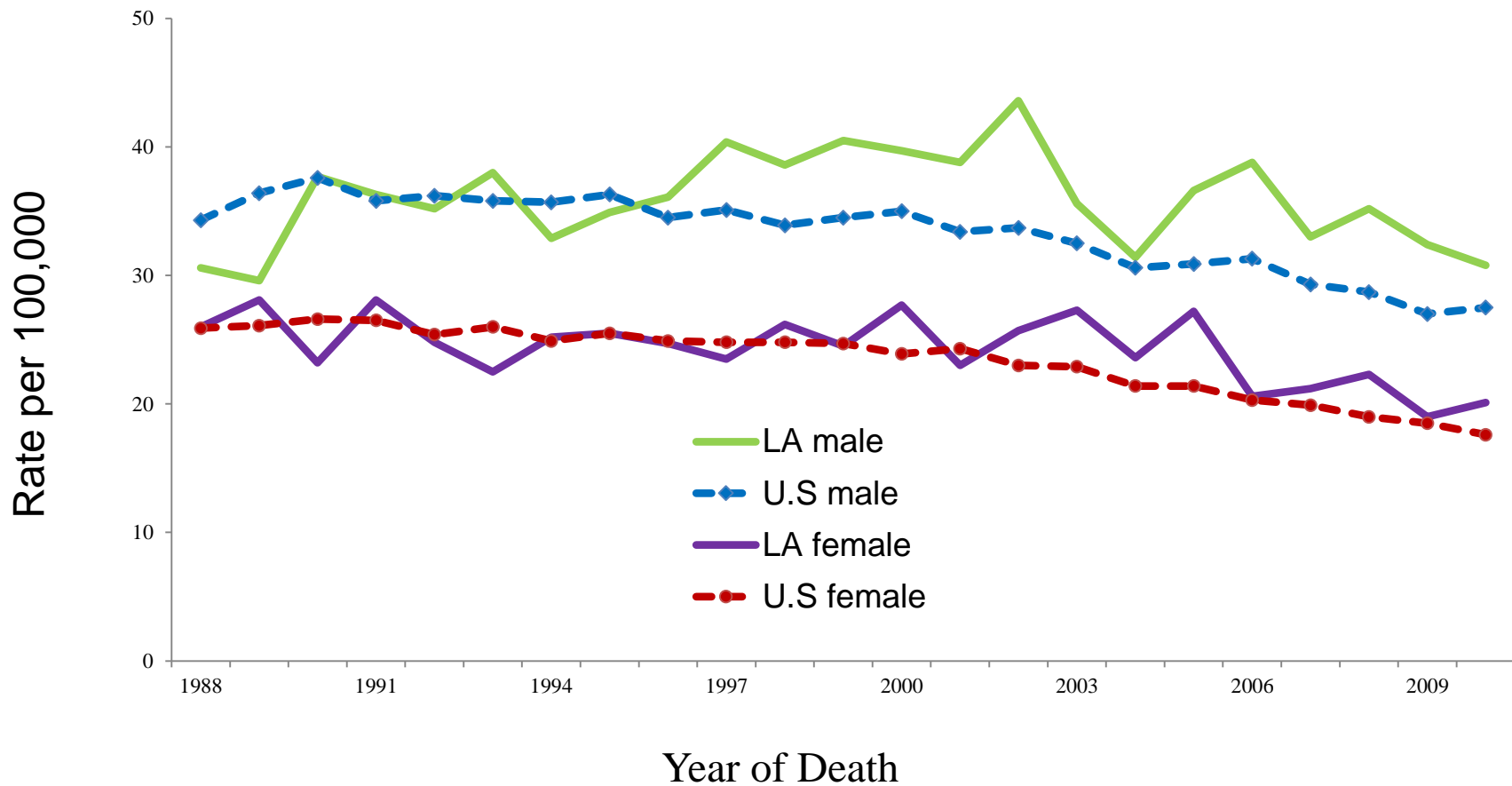
Trends of Cancer Mortality Rates^{1,2}

Colon and Rectum, Whites, 1988-2010



¹ Age-adjusted to the 2000 US standard population. ² Data source: National Center of Health Statistics (NCHS).

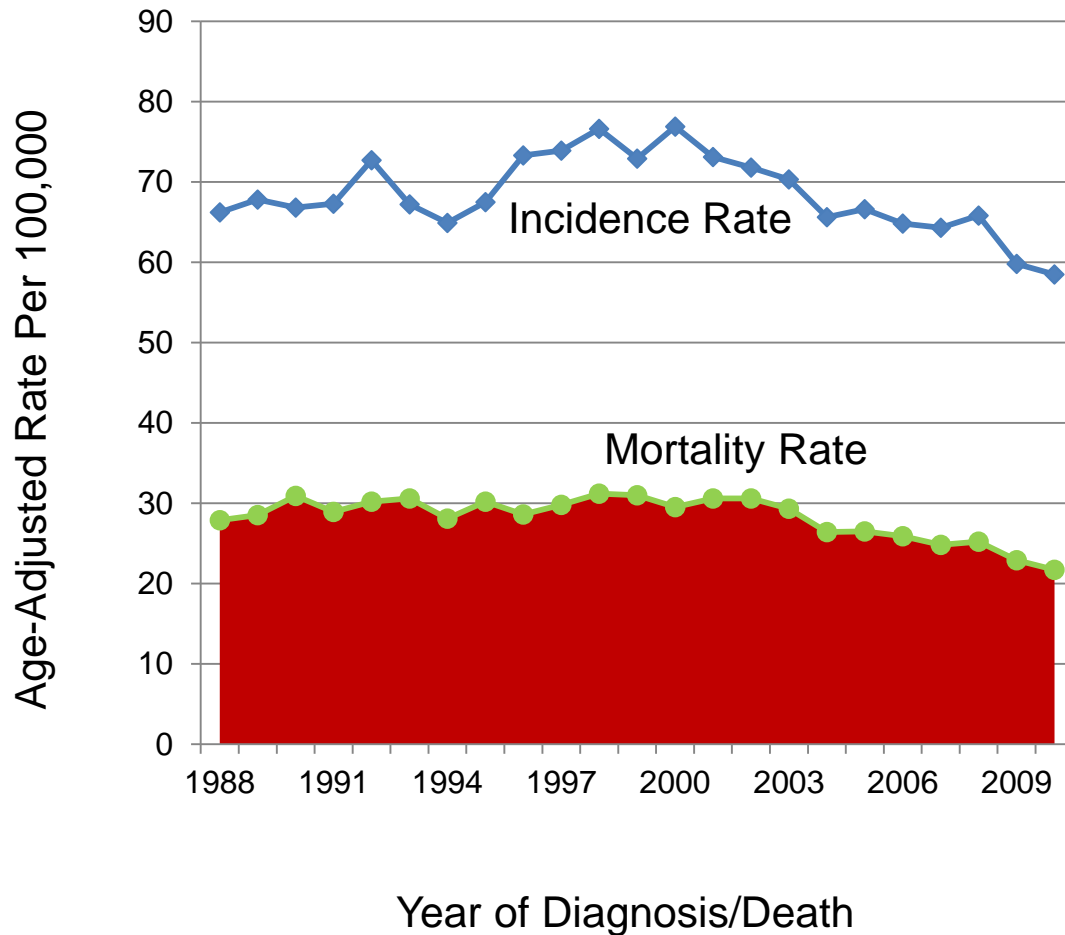
Trends of Cancer Mortality Rates^{1,2} Colon and Rectum, Blacks, 1988-2010



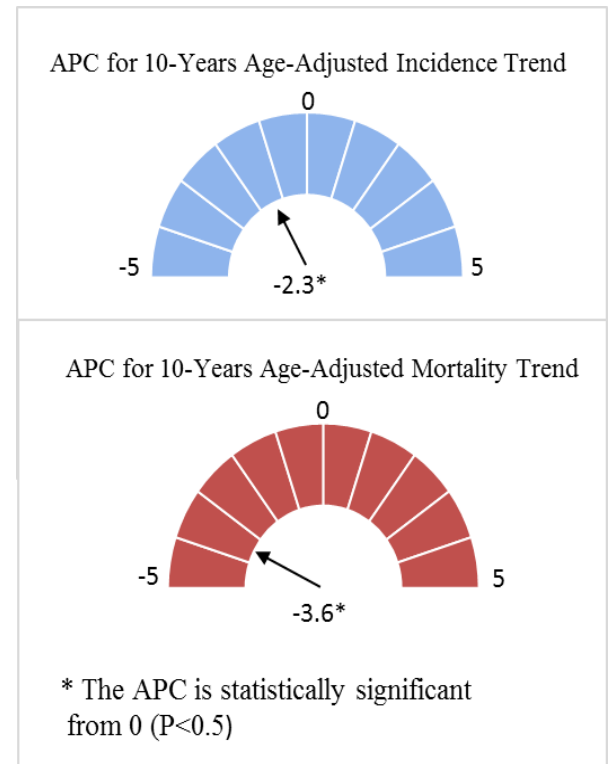
¹ Age-adjusted to the 2000 US standard population. ² Data source: National Center of Health Statistics (NCHS).

Colon and Rectum: Louisiana Males

Trends of Incidence and Mortality Rates; 1988-2010



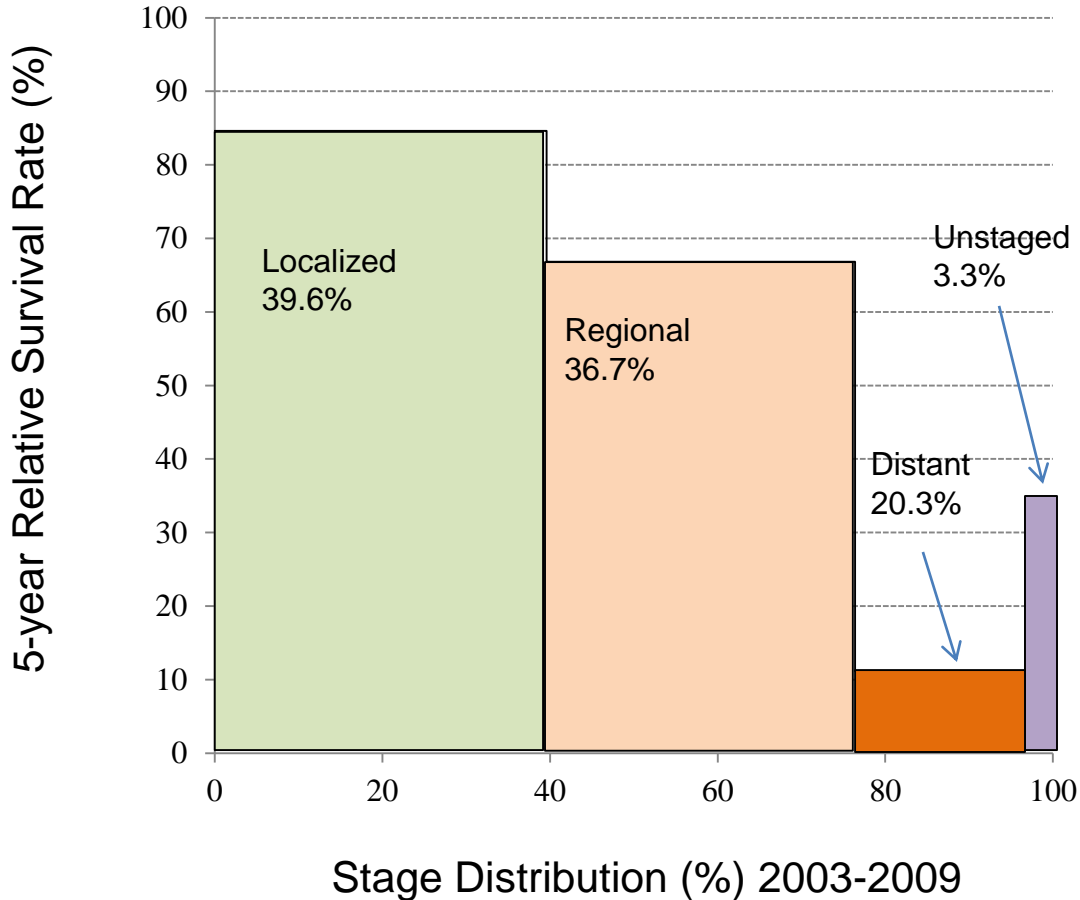
2001-2010



*APCs were calculated using weighted least squares method

Colorectal Cancer¹: Louisiana Males

5-Year Relative Survival by Stage²; 2003-2009



5-year relative survival

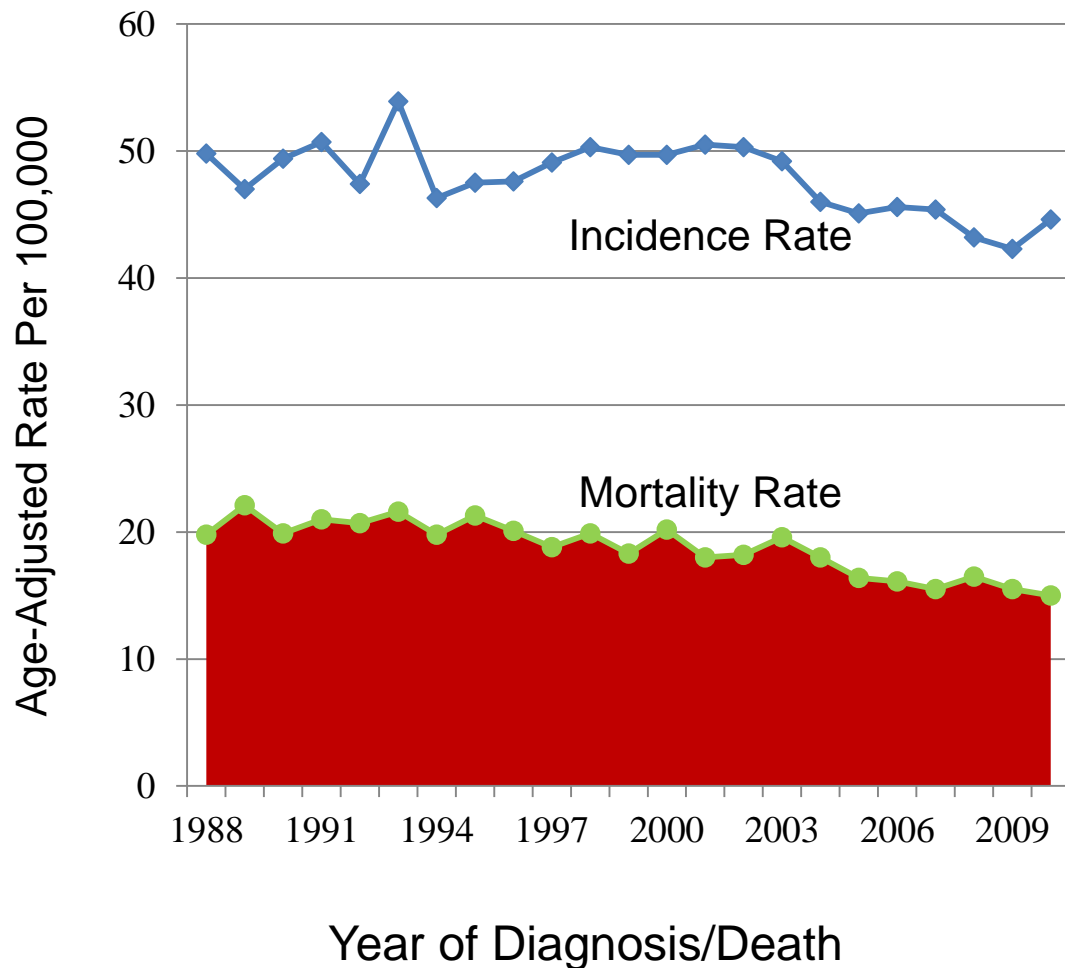
- All races: 61.4%
- Whites: 65.4%
- Blacks: 51.0%

¹ Colorectal cancer includes first primary only (sequence number 0 or 1).

² The stage distribution is based on Summary Stage 2000

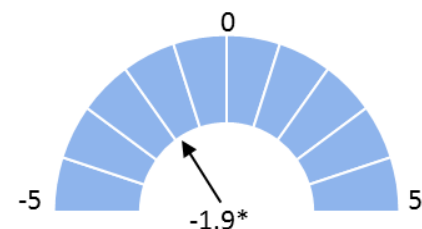
Colon and Rectum: Louisiana Females

Trends of Incidence and Mortality Rates; 1988-2010

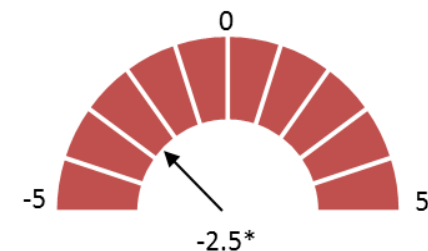


2001-2010

APC for 10-Years Age-Adjusted Incidence Trend



APC for 10-Years Age-Adjusted Mortality Trend

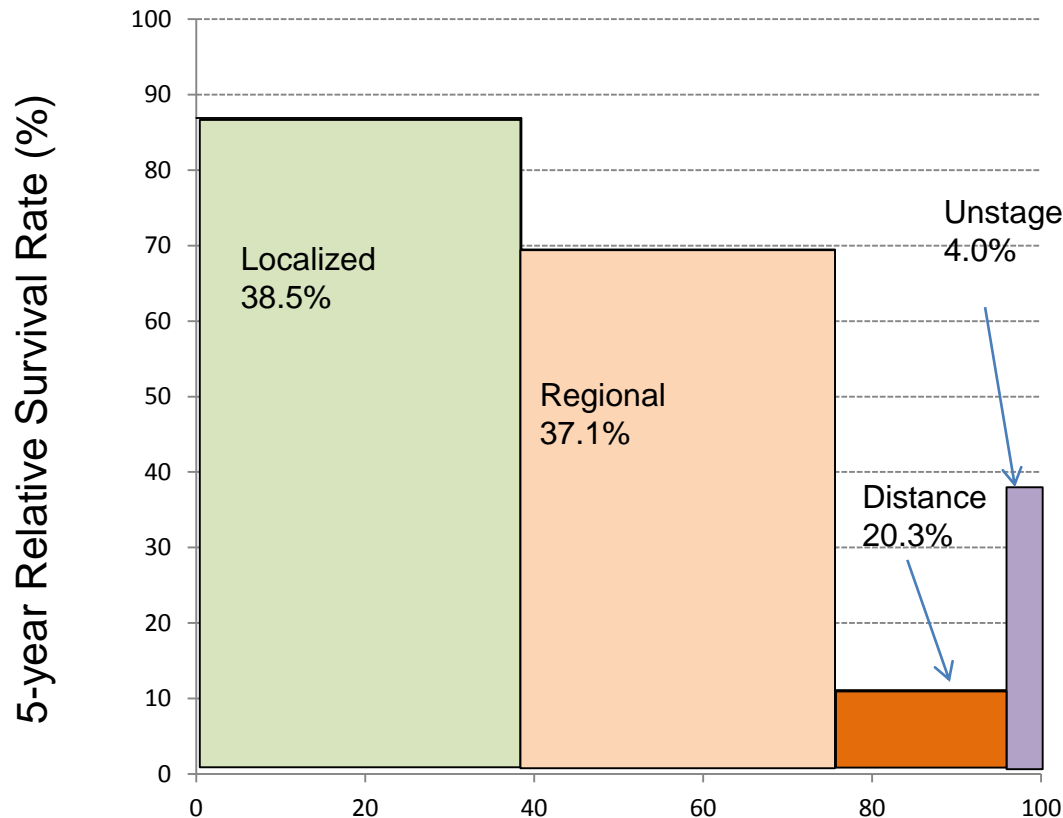


* The APC is statistically significant from 0 ($P < 0.5$)

*APCs were calculated using weighted least squares method

Colorectal Cancer¹: Louisiana Females

5-Year Relative Survival by Stage²; 2003-2009



Stage Distribution (%) 2003-2009

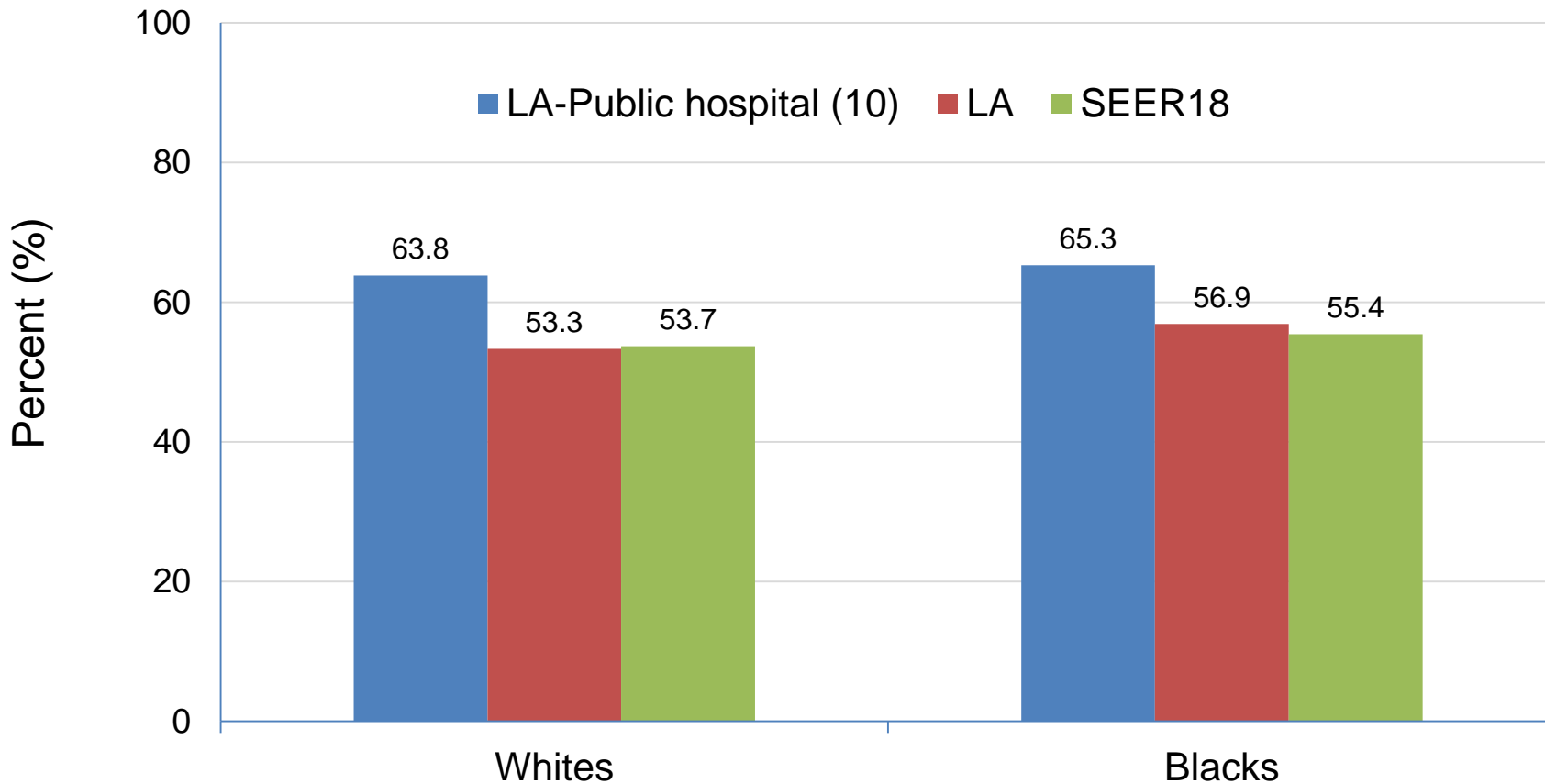
5-year relative survival

- All races: 62.8%
- Whites: 65.4%
- Blacks: 57.1%

¹ Colorectal cancer includes first primary only (sequence number 0 or 1).

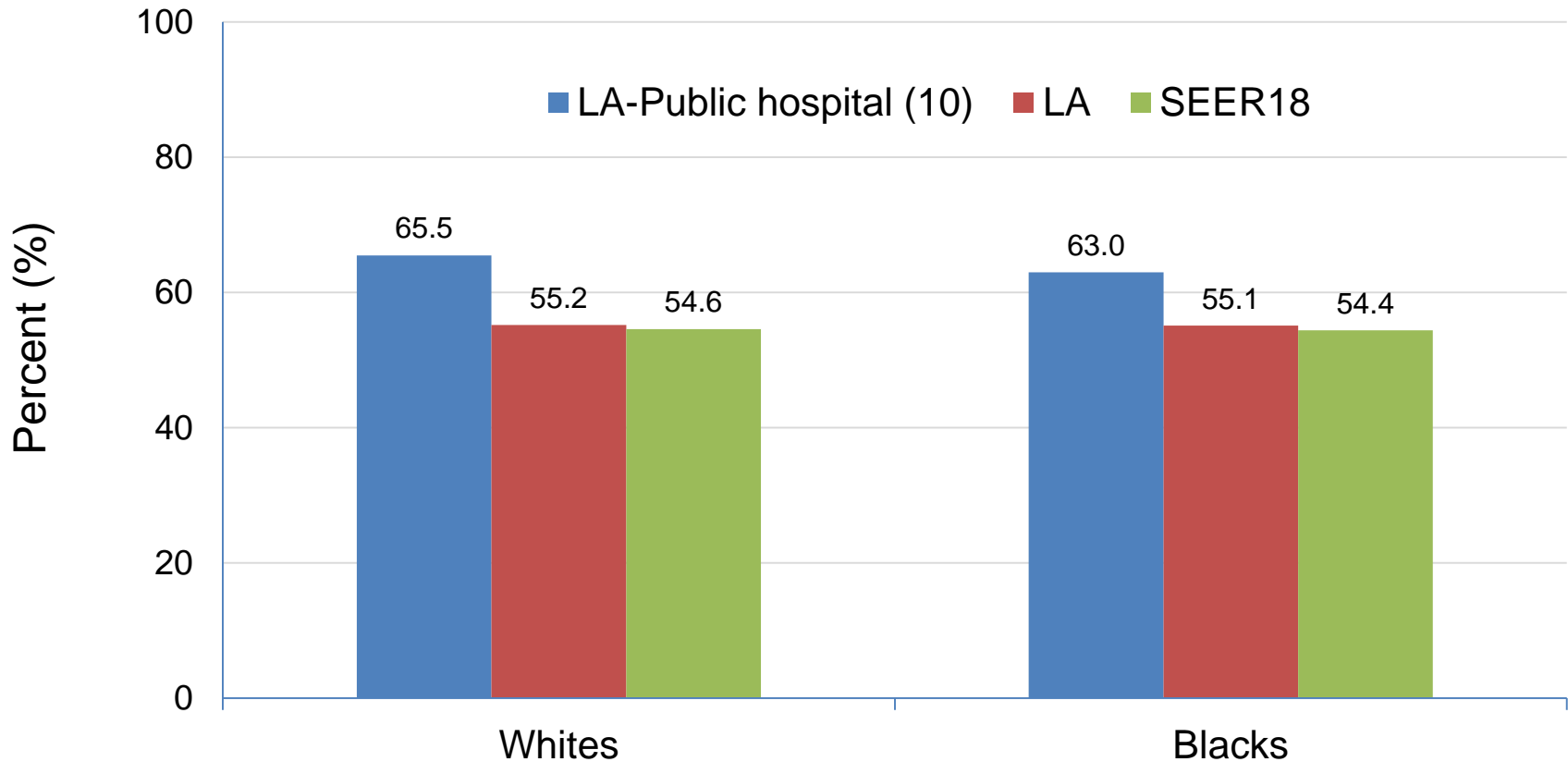
² The stage distribution is based on Summary Stage 2000

Percent of Cases Diagnosed at Late Stage¹, Colon and Rectum Cancer, Males, 2006-2010



¹. Late stage included regional and distant diseases.

Percent of Cases Diagnosed at Late Stage¹, Colon and Rectum Cancer, Females, 2006-2010



¹. Late stage included regional and distant diseases.

Editors

- Patricia A. Andrews, MPH, CTR
- Mei-Chin Hsieh, MSPH, CTR
- Brent A. Mumphrey, BS
- Beth Schmidt, MSPH
- Vivien W. Chen, PhD
- Xiang-Cheng Wu, MD, MPH, CTR

Acknowledgements

- **Hospital cancer registries** (<http://louisianatumorregistry.lsuhs.edu/>)
- **Louisiana Cancer Registrars' Association** (<http://www.lcra-usa.org/>)
- **Physicians and staff members in:**
 - Medical records offices
 - Pathology laboratories
 - Physician offices and clinics
 - Hospice programs and nursing homes
- **Regional and central offices of the Louisiana Tumor Registry**
(<http://louisianatumorregistry.lsuhs.edu/regionalregistries.html>)
- **School of Public Health, LSU Health Sciences Center–New Orleans**
- **Louisiana Cancer and Lung Trust Fund Board**
- **Coroners' offices**

Sources of LTR Funding

- National Cancer Institute, SEER Program
- National Program of Cancer Registries, CDC
- Louisiana Health Care Services Division

Questions?

- Contact:
 - LTR-info@lsuhsc.edu
 - or
 - 504/568-5757