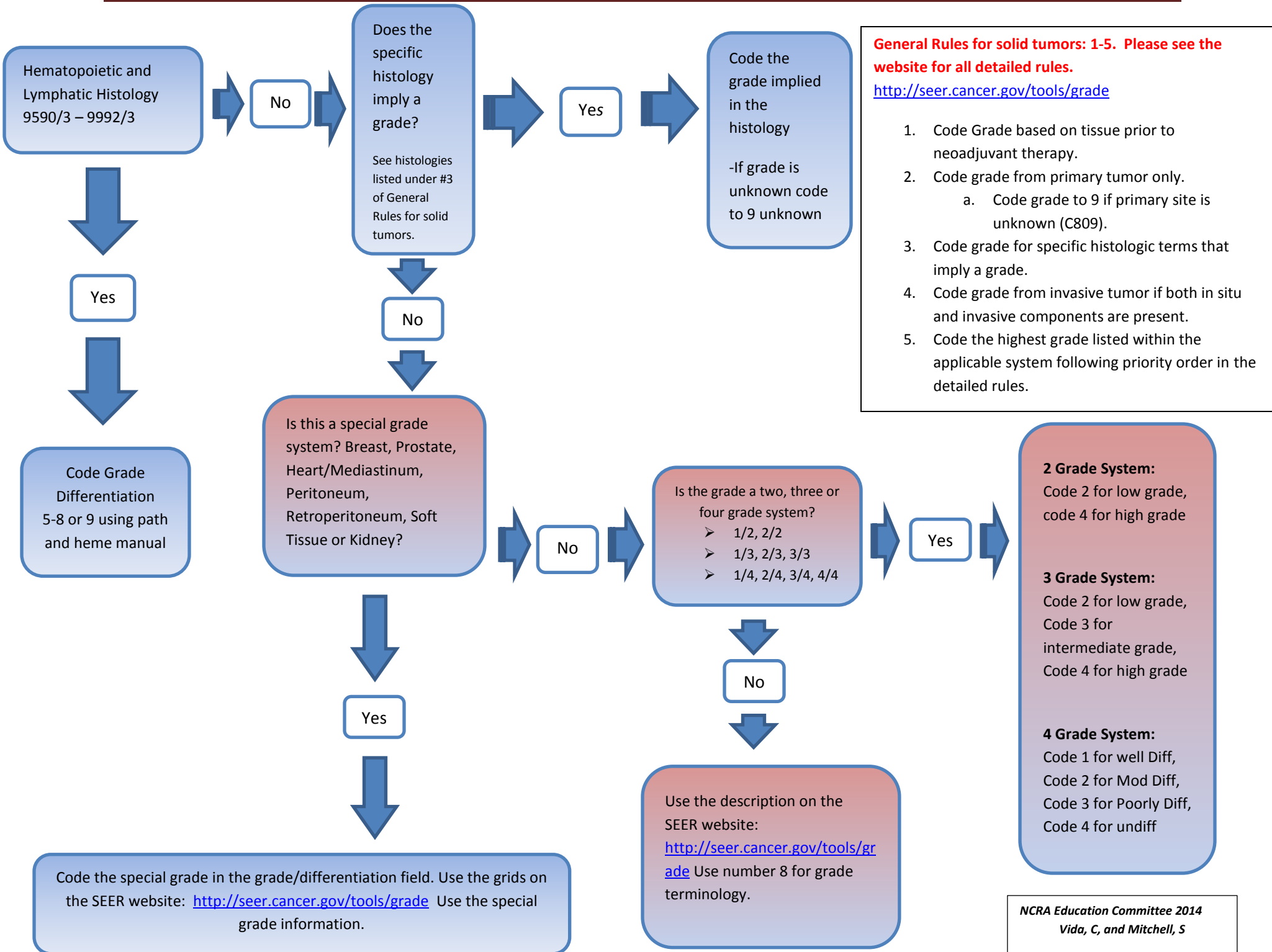


# 2014 + Grade Flowchart



**General Rules for solid tumors: 1-5. Please see the website for all detailed rules.**  
<http://seer.cancer.gov/tools/grade>

- Code Grade based on tissue prior to neoadjuvant therapy.
- Code grade from primary tumor only.
  - Code grade to 9 if primary site is unknown (C809).
- Code grade for specific histologic terms that imply a grade.
- Code grade from invasive tumor if both in situ and invasive components are present.
- Code the highest grade listed within the applicable system following priority order in the detailed rules.

**2 Grade System:**  
Code 2 for low grade, code 4 for high grade

**3 Grade System:**  
Code 2 for low grade, Code 3 for intermediate grade, Code 4 for high grade

**4 Grade System:**  
Code 1 for well Diff, Code 2 for Mod Diff, Code 3 for Poorly Diff, Code 4 for undiff