

Cancer in Louisiana, 2007-2011

Cancer in Louisiana, Volume 29

Editors

Meichin Hsieh, MSPH, CTR
Patricia A. Andrews, MPH, CTR
Lauren S. Maniscalco, MPH
Lisa A. Pareti, BS, RHIT, CTR
Brent A. Mumphrey, BS
Beth A. Schmidt, MSPH
Christina Lefante, MPH
Diane B. Ferguson, MT(ASCP)SBB, MBA
Xiangrong (Sherry) Li, MSPH
Vivien W. Chen, PhD
Ian Landry, MPH
Xiaocheng Wu, MD, MPH, CTR

Louisiana Tumor Registry
Epidemiology Program, School of Public Health
Louisiana State University Health Sciences Center–New Orleans
July 2014

<http://louisianatumorregistry.lsuhs.edu>.
LTR-info@lsuhsc.edu

The work on this monograph was supported in part by:

The LSU Health Sciences Center in New Orleans

Interim LSU Hospital

SEER Contract HHSN261201300161 from the National Cancer Institute

Cooperative Agreement 5U58DP003915
from the Centers for Disease Control and Prevention (CDC).

The contents of the monograph are the responsibility solely of the authors.

All information in this report is in the public domain and may be reproduced or copied without permission. Citation of source, however, is appreciated.

Suggested Citation:

Hsieh M, Andrews PA, Maniscalco LS, Pareti LA, Mumphrey B, Schmidt BA, Lefante C, Ferguson DB, Li X, Landry I, Chen VW, Wu X (eds). Cancer in Louisiana, 2007-2011. New Orleans: Louisiana Tumor Registry, 2014. (Cancer in Louisiana; Vol. 29.)

Table Contents

Summary
Acknowledgements
Introduction
Presentation of the Data
Abbreviations and Symbols
References
Web Addresses for Cancer-Related Organizations
Regions of the Louisiana Tumor Registry and the Louisiana Office of Public Health

Figures: Special Topics

Figure 1. All Cancers Combined
Figure 2. Time Trends
Figure 3. Tobacco-Related Cancers
Figure 4. Lung Cancer
Figure 5. Colorectal Cancer
Figure 6. Female Breast Cancer
Figure 7. Prostate Cancer
Figure 8. Cervical Cancer
Figure 9. Pediatric Cancer
Figure 10. Stage at Diagnosis and Survival

Incidence Tables

Table A1 Average Annual Number of New Cancer Cases, by Race and Sex, 2007–2011

Table A2 Percent Distribution of Cancer Cases, by Race and Sex, 2007-2011

Table B Average Annual Cancer Incidence Rates, by Race and Sex, 2007-2011

Table C Average Annual Incidence Rates for Selected Cancers, by Race and Sex,
2007-2011: U.S., Louisiana, and Industrial Corridor

Table D Average Annual Incidence Rates for Selected Cancers among Asians and Pacific
Islanders, by Sex, 2007-2011: U.S. and Louisiana

Tables E1-E4: Ten Most Commonly Diagnosed Cancers, 2007-2011, by Louisiana Parish

Table E1 White males
Table E2 White females
Table E3 Black males
Table E4 Black females

Tables F1–F4 Ten Most Commonly Diagnosed Cancers, 2007-2011: U.S., Louisiana, and
Louisiana Tumor Registry Regions

Table F1 White males
Table F2 White females
Table F3 Black males
Table F4 Black females

Tables G1–G4 Ten Most Commonly Diagnosed, 2007-2011: U.S., Louisiana, and Louisiana Office of Public Health Regions

Table G1 White males

Table G2 White females

Table G3 Black males

Table G4 Black females

Tables H1–H3 Children and Adolescents Cancers

Table H1 Number of Cancer Cases by Race and Sex, 2007-2011 Combined

Table H2 Percent Distribution of Cancer Cases by Race and Sex, 2007-2011 Combined

Table H3 Average Annual Cancer Incidence Rates by Race and Sex, 2007-2011.

Mortality Tables

Table I1 Average Annual Number of Cancer Deaths, by Race and Sex, 2006-2010

Table I2 Percent Distribution of Cancer Deaths, by Race and Sex, 2006-2010

Table J Average Annual Death Rates, by Race and Sex, 2006-2010

Table K Average Annual Death Rates for Selected Cancers, by Race and Sex, 2006-2010: U.S., Louisiana, and Industrial Corridor

Tables L1–L4 Ten Most Common Cancer Deaths, by Louisiana parish

Table L1 White males

Table L2 White females

Table L3 Black males

Table L4 Black females

Tables M1–M4 Ten Most Common Cancer Deaths: U.S., Louisiana, and Louisiana Tumor Registry Regions

Table M1 White males

Table M2 White females

Table M3 Black males

Table M4 Black females

Tables N1–N4 Ten Most Common Deaths: U.S., Louisiana, and Louisiana Office of Public Health Regions

Table N1 White males

Table N2 White females

Table N3 Black males

Table N4 Black females

Summary

Cancer in Louisiana

Incidence, 2007-2011

1. Number of new cancer cases: During the five-year period 2007–2011, new diagnoses of invasive cancer averaged 22,831 cases per year among Louisiana residents (Table A1).
2. Most frequently diagnosed cancers: For all Louisianans combined, the most frequently diagnosed cancers were prostate (16.2% of all new cases), lung (15.1%), breast (13.5%), and colorectum (10.4%) (Table A2).
3. Highest annual incidence rates per 100,000: The four most common invasive cancers by race/sex group were (Table C):
 - White men: prostate (151.5 cases per 100,000 population), lung (92.3), colorectum (57.6), and bladder (38.4)
 - Black men: prostate (230.7), lung (113.8), colorectum (73.3), and kidney (22.7)
 - White women: breast (120.3), lung (59.1), and colorectal (40.2) cancers, and thyroid (18.4)
 - Black women: breast (126.6), colorectum (52.8), lung (52.7), and uterus (19.4)
4. Louisiana vs. nationwide rates: The incidence rates for cancers of all sites combined among white and black men as well as black women in Louisiana were significantly higher than those for their national counterparts ($p \leq 0.5$). In contrast, the rate for white women in the state was significantly lower than nationwide (Table C). Lung cancer in Louisiana has the highest elevated incidence rates for white and black men, 27.5% and 22.4%, respectively.
5. Industrial Corridor: The Industrial Corridor includes Ascension, East Baton Rouge, Iberville, St. Charles, St. James, St. John the Baptist, and West Baton Rouge parishes. In the Industrial Corridor, the incidence rates for all cancers combined for white men significantly exceeded statewide rate; in contrast, white women had significantly lower rate than statewide rate. Overall rates for the black men and women did not differ significantly from Louisiana rates. (Table C).
6. American Indians/Alaska Natives, Asians and Pacific Islanders (AI/AN and APIs): The incidence rates for cancers of all sites combined among AI/AN and APIs in Louisiana are significantly lower than those of their national counterparts for both men and women. Louisiana AI/AN and APIs also have a significantly lower incidence rate of colorectal cancer among men and women, and significantly lower incidence rates for prostate and Non-Hodgkin Lymphoma among men and breast and thyroid cancers among women (Table D).
7. Cancer among children and adolescents: Louisiana's incidence rates for all invasive cancer combined among children and adolescents (aged 0–19) were lower than U.S. rates for both boys and girls, but only the incidence rate of boys showed statistically significant (Figure 9). The most common invasive cancer among children and adolescents in Louisiana is brain/CNS tumors (Tables H1-H3).

Cancer Deaths, 2007-2011

1. Total cancer deaths: An average of 9,093 deaths were attributed to cancer each year, 2007–2011 (Table I1). Only heart disease caused more deaths (an average of 10,105 per year in Louisiana).
2. Leading causes of cancer death: For all Louisiana residents combined, cancer mortality was highest from cancer of the lung (29.6% of all cancer deaths), colorectum (9.5%), breast (7.2%), and prostate (4.6%) (Table I2).
3. Highest annual mortality rates: The highest rates for cancer death in Louisiana were (Table K):
 - White men: lung (74.1 per 100,000 population), colorectum (20.7), prostate (19.6), and pancreas (14.1)
 - Black men: lung (97.2), prostate (46.8), colorectum (33.1), and pancreas (15.4)
 - White women: lung (44.9), breast (21.8), colorectum (13.8), and pancreas (10.8)
 - Black women: lung (39.7), breast (33.9), colorectum (20.0), and pancreas (13.1)
3. Louisiana vs. nationwide rates: Statewide, each of the four major race/sex groups had a significantly higher death rate for all sites combined than its national counterpart (Table K). Lung cancer mortality rates were higher in Louisiana than in the U.S. among four race-sex groups.
4. Industrial Corridor: Death rates for all cancers combined in the Industrial Corridor were significantly lower than those for Louisiana among whites; blacks in the Industrial Corridor experienced the same mortality rates as their counterparts statewide (Table K).
5. Cancer death among those aged 0-19: In Louisiana's 0–19 age-group, the mortality rates were about the same in Louisiana and the U.S. for both boys and girls (Figure 9).

Note: All incidence and death rates in this volume are average annual rates per 100,000 for the five-year period. They are age adjusted to the U.S. 2000 standard and should **not** be compared with rates that are adjusted to the 1970 population.

Acknowledgements

As with all reports produced by the Louisiana Tumor Registry, much appreciation goes to those whose dedication and hard work provide the foundation for this monograph. The LTR sincerely thanks:

Louisiana Tumor Registry Regional Directors/Managers

Angela Crossgrow, CTR, Manager, Regions 1 & 3
Nicole Magee, CTR, Director, Region 2
Lea G. Guidry, RHIA, CTR, Director, Region 4
Delana Thorn, LPN, CPhT, CTR, Director, Region 5
Nadine S. Johnston, RHIA, CTR, Director, Regions 6–8
Ramona Rachal, CTR, Coordinator, Region 6
Sara Beth Copes, RHIA, CTR, Coordinator, Region 7
Melanie Byargeon, RHIA, CTR, Coordinator, Region 8

Regional registrars and staff members of the Louisiana Tumor Registry

Central office staff members

Arnold Kwanbunbumpen, BS
Betty Gonzales, MBA
Ana Ruiz, BA
Lisa Moses Smith, MS, MPH, LCSW
Mary O’Flarity, MN, RN

Hospital cancer registries

Louisiana Cancer Registrars’ Association

Physicians and staff members in:

Medical records offices
Pathology laboratories
Physician offices and clinics
Freestanding treatment facilities
Hospice programs

School of Public Health, LSU Health Sciences Center–New Orleans

Louisiana Cancer and Lung Trust Fund Board

Surveillance, Epidemiology and End Results (SEER) Program, National Cancer Institute

National Program of Cancer Registries, CDC

Louisiana Health Care Services Division

Coroners' offices

Office of Public Health, Louisiana Department of Health and Hospitals

Introduction

The Louisiana Tumor Registry is pleased to present Volume 29 of its annual Cancer in Louisiana monograph series, documenting cancer incidence 2007-2011 and mortality 2007-2011 in Louisiana and adding information on incidence among American Indian, Alaska Natives, Asians and Pacific Islanders(AI/AN and API).

This volume will be published solely as an online document.

Purpose of the Registry

The Louisiana Tumor Registry (LTR) was created by the state legislature to collect, analyze and disseminate information on cancer in Louisiana.

Cancer is a reportable disease in all states of the U.S. Using the data they compile, statewide population-based registries calculate cancer incidence statistics by age, race, sex, geographic region, and trends over time. With these statistics, data-driven cancer prevention and control programs can be implemented to reduce cancer morbidity and mortality. Registry data provide the foundation for studies evaluating clinical therapies, health care planning, screening and early detection programs, and other cancer prevention and control initiatives. Using registry information, we can work to lessen the burden of cancer in our state.

Historical Background of the LTR

Cancer registration in Louisiana began in 1947 in the Charity Hospital Tumor Registry in New Orleans and was limited to patients in that facility. In 1974, as part of its Surveillance, Epidemiology and End Results (SEER) Program, the National Cancer Institute (NCI) provided funds for a population-based cancer incidence and survival registry. Data from the Louisiana Tumor Registry, which then encompassed only Jefferson, Orleans, and St. Bernard parishes, were included in the

1974–1977 SEER national incidence rates.

In 1979, the LTR was transferred to Louisiana's Office of Public Health (OPH). The catchment area for the LTR was expanded in 1983 to include 35 parishes of South Louisiana (Regions 1–5). In 1988, when the 29 parishes of North Louisiana (Regions 6–8) were added, statewide coverage was achieved. Vivien W. Chen, Ph.D., served as director of the registry from 1991 until 2012. On July 1, 2012, Xiao-Cheng Wu, MD, MPH, assumed the position of director.

Beginning in 1994, the Centers for Disease Control and Prevention (CDC) has provided funds for most states, including Louisiana, to participate in the National Program of Cancer Registries. In 1995, the registry was transferred from the OPH to the LSU Board of Supervisors. Since then, the LSU Health Sciences Center in New Orleans has been responsible for the cancer registry program and has provided state funds for its work.

In 2001, after a competitive application process, the Louisiana Tumor Registry was selected to join the SEER Program of the National Cancer Institute as an expansion registry on a provisional basis. Four years later, it became a full member of SEER. As such, the LTR again receives additional funds from the NCI.

Oversight of the registry has been exercised by the Louisiana Cancer and Lung Trust Fund Board, whose members represent various health institutions throughout the state and are appointed by the governor (see Acknowledgements, below).

Operations of the Registry

The operations of the registry are mandated by public law, R.S. 40:1299.80 et seq., which directs all medical facilities and health care providers to report all cancer cases to the registry. The same rules require strict confidentiality of all data.

Central Office and Regional Registries

The Louisiana Tumor Registry comprises a central office and eight regional registries that collect and process cancer incidence data from geographic areas based on Louisiana's historic

Office of Public Health districts. (See Appendix A.)

Collection of Cancer Incidence Data

Each regional registry is responsible for the complete ascertainment of data on cancer diagnoses and treatment in its region within six months of diagnosis. About one fourth of all hospitals in Louisiana maintain their own cancer registries, and the regional registries are responsible for abstracting cases from the remaining hospitals and other facilities such as freestanding pathology labs, treatment centers, outpatient surgical facilities, and physician offices.

Regional registries monitor the facilities in their area for completeness of case ascertainment, as well as editing case abstracts, consolidating multiple reports on the same case, and assisting in training new hospital registry employees. The central office coordinates regional offices to ensure the quality, completeness and timeliness of reporting. In addition, its research staff prepares publications and participates in research activities.

Unrecorded cancer diagnoses identified among Louisiana residents through death certificates are traced back to hospitals, other facilities or physician offices to be abstracted. If the original diagnostic information cannot be located, the case is considered a “death-certificate-only” case, and the date of death is recorded as the diagnosis date.

Interstate exchange of data with other states began in 1997 in order to ensure a higher level of case ascertainment and data completeness. This permits the LTR to obtain cancer data on residents of Louisiana who have traveled out of state for cancer diagnosis and/or treatment. Louisiana has such agreements with 19 states, including all neighboring states. Strict protocols on patient confidentiality are followed.

Reportable Diagnoses

The Louisiana Tumor Registry complies with national standards in requiring that all in situ and invasive neoplasms (cancers with behavior codes 2 or 3 in the *ICD-O-2*¹ or *ICD-O-3*²) be reported. Cervical intraepithelial neoplasia III (CIN III) have been reportable since 2009. Non-reportable

cancers include other intraepithelial or in situ carcinomas of the cervix, intraepithelial carcinoma of the prostate, and basal cell and squamous cell carcinomas of the skin.

Beginning in 2004, benign and borderline tumors of the brain and central nervous system are also reportable, but rates and counts are not presented here. Pilocytic astrocytomas are classified as benign by the World Health Organization but as malignant in North America.

Data Quality

Quality assurance procedures in the regional registries and central office minimize abstracting and coding errors and evaluate the completeness of case ascertainment.

To enhance the quality of incidence data across the United States, the North American Association of Central Cancer Registries (NAACCR) sets standards for quality, timeliness, and completeness. Data from U.S. registries that meet those standards are used in calculating the “U.S. Combined Cancer Incidence Rates,” which are reported in NAACCR’s annual publication, *Cancer in North America*.³ Louisiana Tumor Registry data have qualified for inclusion every year since the inception of the certification process in 1997 and have been certified at the gold level for the past 17 years.

LTR data are also included in other cancer surveillance publications that accept only high-quality data: *Cancer Incidence in Five Continents*,⁴ published by the World Health Organization’s International Association for Research on Cancer; *United States Cancer Statistics*,⁵ published by the CDC and the NCI; and *SEER Cancer Statistics Review*,⁶ published by the SEER Program.

Confidentiality of Data

Confidentiality is of highest importance in registry operations. Louisiana law mandates strict confidentiality of data about cancers and health care providers and protects participating facilities and physicians from any liability that may arise from reporting to the cancer registry program.

LTR personnel sign an “Agreement to Maintain Confidentiality of Data” and are subject to penalty

if they disclose confidential information. LTR data are published in aggregate form only. Data

released in public presentations or publications are not intended to correspond to individual cases.

Presentation of Data

Volume 29 of *Cancer in Louisiana* presents cancer incidence and mortality information about residents of Louisiana diagnosed with cancer between January 1, 2007, and December 31, 2011. Statistics on incidence are found in Tables A–H, and Tables I–N contain data on mortality.

Incidence and mortality rates are provided for the state, the regions of the LTR, the regions of the Office of Public Health and the Louisiana Comprehensive Cancer Control Partnership, the Industrial Corridor, and individual parishes. Descriptions of the OPH and Cancer Control Partnership regions can be found at <http://www.publichealth.lsuhsu.edu/LCCCCP/LCCP/AreaCoordinators.htm>.

To ensure statistical stability, rates are not calculated for cells smaller than sixteen.

Data Use Standards

Incidence

The LTR follows standard protocols in computing and publishing cancer incidence data so that Louisiana data can be compared with those from other cancer surveillance publications. These conventions include:

- Only primary cancers are included in the LTR database used for calculating incidence counts or rates. Recurrent or metastatic cases are excluded.
- Rules from the SEER Program determine whether multiple primary cancers for a given patient are considered one case or more than one.
- For preparing statistics, anatomic subsites are combined according to code groupings compiled by the SEER Program of the National Cancer Institute (http://seer.cancer.gov/siterecode/icdo3_d01272003/).
- With the exception of bladder cancer, only invasive neoplasms are included in the tables. For cancers of the bladder, both in situ and invasive cases are included. In situ carcinomas of the breast

are listed separately from the invasive cancers and are excluded from the “all sites” totals.

- Neoplasms of the lymphatic, hematopoietic, and reticuloendothelial systems (e.g., lymphomas and leukemias), as well as mesothelioma and Kaposi sarcoma, are grouped by their histologies and not by the anatomical sites where they occur.

Cancer Deaths

Information on residents of Louisiana who died with cancer as the underlying cause of death was compiled by the National Center for Health Statistics, using mortality data from the Louisiana Office of Public Health and its counterparts in other states. Louisiana residents who died out of state are included in Louisiana statistics.

The SEER Program’s detailed anatomical site codes from the *International Classification of Diseases, 10th Revision*⁷ for calculating mortality statistics can be found at its website: http://seer.cancer.gov/codrecode/1969+_d09172004/index.html.

Race

Race for cancer cases is based primarily on information contained in a patient’s medical record, supplemented by information on death certificates. The LTR has made great efforts to resolve discrepancies.

Louisiana cancer incidence and mortality data in this volume include the racial categories of white, black, and all races combined. Other groups were not analyzed separately because of their small numbers. Less than one percent of 2006–2010 cases were of unknown race. Cases with unknown race were included in the calculations of rates for “all races” but not in the race-specific computations.

Population Estimates

Five-year population estimates by race, sex and age for Louisiana and the U.S. were obtained from the National Cancer Institute and are based on the U.S. Census Bureau's estimates of the populations for 2007–2011.

Age Adjustment

Age adjustment allows meaningful comparisons of cancer risk in different populations by controlling for differences in the age distributions of those populations. This is important because cancer is diagnosed more frequently among the elderly. Age-adjusted rates are the weighted average of the age-specific rates, where the weights represent the age distribution of a standard population.

Rates in this monograph are age adjusted to the 2000 U.S. standard population. Rates in earlier publications (with data predating 1999), however, were age adjusted to the 1970 U.S. standard population. Because the U.S. populace was older in 2000 than in 1970, the new standard will cause most rates to appear to rise markedly. Thus, incidence and mortality rates in Volumes 1-16 of this series should not be compared with those in subsequent volumes.

Comparison Groups

Incidence

Estimates of the average annual age-adjusted incidence rates for the U.S. were calculated by the Surveillance, Epidemiology and End Results (SEER) Program of the National Cancer Institute. Data from the SEER Program are recognized for their high quality, and SEER estimates have been traditionally cited as national rates.

The SEER Program estimates in this volume are based on data representing about 28% of the U.S. population. These come from nine state registries (California, Connecticut, Georgia, Hawaii, Iowa, Kentucky, Louisiana, New Jersey, New Mexico and Utah), two metropolitan areas (Detroit and Seattle/Puget Sound), and the American Indian/Alaska Natives of Arizona and Alaska.

Mortality

Mortality statistics for the United States are based on data from the National Center for Health Statistics, to which all states submit death certificate information.

Calculations

The following versions of SEER*Stat, developed by the NCI, were used for all calculations:

Incidence:

Surveillance, Epidemiology, and End Results (SEER) Program (www.seer.cancer.gov)
SEER*Stat Database: Incidence - SEER 18 Regs Research Data + Hurricane Katrina Impacted Louisiana Cases, Nov 2013 Sub (2000-2011) <Katrina/Rita Population Adjustment> - Linked To County Attributes - Total U.S., 1969-2012 Counties, National Cancer Institute, DCCPS, Surveillance Research Program, Surveillance Systems Branch, released April 2014 (updated 5/7/2014), based on the November 2013 submission.

Mortality:

Surveillance, Epidemiology, and End Results (SEER) Program (www.seer.cancer.gov)
SEER*Stat Database: Mortality - All COD, Aggregated With County, Total U.S. (1990-2010) <Katrina/Rita Population Adjustment> - Linked To County Attributes - Total U.S., 1969-2011 Counties, National Cancer Institute, DCCPS, Surveillance Research Program, Surveillance Systems Branch, released April 2013. Underlying mortality data provided by NCHS (www.cdc.gov/nchs).

Cautions in Interpretation

In comparing rates among geographic areas it is important to keep in mind that a variety of factors, in addition to true differences in the risk of developing or dying from cancer, can contribute to variations in cancer rates. Geographic differences should, therefore, be interpreted with

caution and should be used to generate, not test, hypotheses.

Rates based on small numbers may be unstable. For this reason, federal agencies and some states have guidelines for minimum counts. This issue of *Cancer in Louisiana* publishes rates based on

sixteen or more cases for a five-year period, in conformity with the standards of the "Annual Report to the Nation," published by the American Cancer Society, the North American Association of Central Cancer Registries, the CDC, and other surveillance agencies.

Abbreviations and Symbols Used in This Volume

ICD-O-2	<i>International Classification of Diseases for Oncology, 2nd edition</i>
ICD-O-3	<i>International Classification of Diseases for Oncology, 3rd edition</i>
LTR	Louisiana Tumor Registry
NCI	National Cancer Institute
NAACCR	North American Association of Central Cancer Registries
OPH	Louisiana Office of Public Health
SEER	Surveillance, Epidemiology and End Results Program of the National Cancer Institute
--	Not applicable
^	Rate is not calculated for a case count lower than sixteen

References

1. Percy C, Van Holten V, Muir C (eds). *International Classification of Diseases for Oncology*. 2nd edition. Geneva, Switzerland: World Health Organization, 1990.
2. Fritz A, Percy C, Shanmugaratnam K, Sobin L, Parkin DM, Whelan S (es). *International Classification of Diseases for Oncology*. 3rd edition. Geneva: World Health Organization, 2000.
3. Available at <http://www.naaccr.org/DataandPublications/CINAPubs.aspx>.
4. Parkin DM, Whelan SL, Ferlay J, Teppo L, Thomas DB (eds). *Cancer Incidence in Five Continents*, vol. 8. Lyon, France: International Association for Research on Cancer and International Association of Cancer Registries, 2002. (IARC Scientific Pub. No. 155.)
5. Available at <http://apps.nccd.cdc.gov/uscs/>
6. Available at http://seer.cancer.gov/csr/1975_2010/
7. World Health Organization. *International Statistical Classification of Diseases and Related Health Problems, Tenth Revision* (3 vols). Geneva, 1992.

A list of the first 28 volumes of *Cancer in Louisiana* is available at
<http://louisianatumorregistry.lsuhs.edu/pdf/Louisiana%20Tumor%20Registry%20Monograph%20Series.pdf>

Web Addresses for Cancer-Related Organizations

American Cancer Society: <http://www.cancer.org>

Behavioral Risk Factor Surveillance System: www.cdc.gov/brfss

Centers for Disease Control and Prevention: <http://www.cdc.gov/>

Louisiana Breast and Cervical Health Program: <http://louisianacancer.org>

Louisiana Cancer Control Partnership:
<http://www.publichealth.lsuhs.edu/lcccp/lccp/ExecutiveCommittee.htm>

Louisiana Cancer Registrars' Association: <http://www.lcra-usa.org>

Louisiana Office of Public Health: www.oph.dhh.louisiana.gov/

National Cancer Institute: <http://cancer.gov>

North American Association of Central Cancer Registries: www.naaccr.org

SEER Program (NCI): <http://seer.cancer.gov>

State Cancer Profiles: <http://statecancerprofiles.cancer.gov>

Tobacco-Free Louisiana: <http://www.lphi.org/home2/section/3-27/the-louisiana-campaign-for-tobacco-free-living>

United States Cancer Statistics (National Program of Cancer Registries, CDC):
<http://apps.nccd.cdc.gov/uscs>

APPENDIX A

Regions of the Louisiana Tumor Registry and the Louisiana Office of Public Health

Because the Louisiana Tumor Registry was created as an agency of the Louisiana Office of Public Health (OPH), it followed the Department of Health and Hospitals' regional divisions in its publications. Using OPH boundaries enabled state officials to take advantage of the existing public health structure in case alarming cancer incidence patterns emerged.

Later, the OPH revised its health regions to respond to changing population patterns (especially the growth of the area north of Lake Pontchartrain, now Region 9) and to eliminate the geographic isolation of Plaquemines Parish for public health operations. Regions 5-8 did not change.

The Tumor Registry, however, has retained the traditional OPH regional boundaries, in order to monitor historical incidence trends.

Maps of the regions are available at:

OPH: <http://www.dhh.louisiana.gov/assets/images/maps/regionmap.jpg>

LTR: <http://louisianatumorregistry.lsuhs.edu/>

Regions of the Louisiana Tumor Registry

<i>Regional registry</i>	<i>Beginning date of the Registry</i>	<i>Average annual Population 2007–2011</i>	<i>Parishes covered</i>
New Orleans (Region 1)	1974	786,157	Jefferson, Orleans, St. Bernard
Baton Rouge (Region 2)	1983	938,591	Ascension, Assumption, East Baton Rouge, East Feliciana, Iberville, Livingston, Pointe Coupée, St. Helena, Tangipahoa, West Baton Rouge, West Feliciana
Southeast Louisiana (Region 3)	1983	630,022	Lafourche, Plaquemines, St. Charles, St. James, St. John, St. Tammany, Terrebonne, Washington
Acadiana (Region 4)	1983	635,676	Acadia, Evangeline, Iberia, Lafayette, St. Landry, St. Martin, St. Mary, Vermilion
Southwest Louisiana (Region 5)	1983	290,590	Allen, Beauregard, Calcasieu, Cameron, Jefferson Davis
Central Louisiana (Region 6)	1988	306,971	Avoyelles, Catahoula, Concordia, Grant, La Salle, Rapides, Vernon, Winn
Northwest Louisiana (Region 7)	1988	541,691	Bienville, Bossier, Caddo, Claiborne, De Soto, Natchitoches, Red River, Sabine, Webster
Northeast Louisiana (Region 8)	1988	354,643	Caldwell, East Carroll, Franklin, Jackson, Lincoln, Madison, Morehouse, Ouachita, Richland, Tensas, Union, West Carroll
Entire state	1988	4,484,341	

Source: U.S. Bureau of Census and National Cancer Institute, April 2014.

Regions of the Office of Public Health

Region 1: New Orleans Region

Jefferson Parish
Orleans Parish
Plaquemines Parish
St. Bernard Parish

Region 2: Baton Rouge Region

Ascension Parish
East Baton Rouge Parish
East Feliciana Parish
Iberville Parish
Pointe Coupee Parish
West Baton Rouge Parish
West Feliciana Parish

Region 3: Southeast Region

Assumption Parish
Lafourche Parish
St. Charles Parish
St. James Parish
St. John the Baptist Parish
St. Mary Parish
Terrebonne Parish

Region 4: Acadiana Region

Acadia Parish
Evangeline Parish
Iberia Parish
Lafayette Parish
St. Landry Parish
St. Martin Parish
Vermilion Parish

Region 5: Southwest Region

Allen Parish
Beauregard Parish
Calcasieu Parish
Cameron Parish
Jefferson Davis Parish

Region 6: Central Region

Avoyelles Parish
Catahoula Parish
Concordia Parish
Grant Parish
La Salle Parish
Rapides Parish
Vernon Parish
Winn Parish

Region 7: Northwest Region

Bienville Parish
Bossier Parish
Caddo Parish
Claiborne Parish
De Soto Parish
Natchitoches Parish
Red River Parish
Sabine Parish
Webster Parish

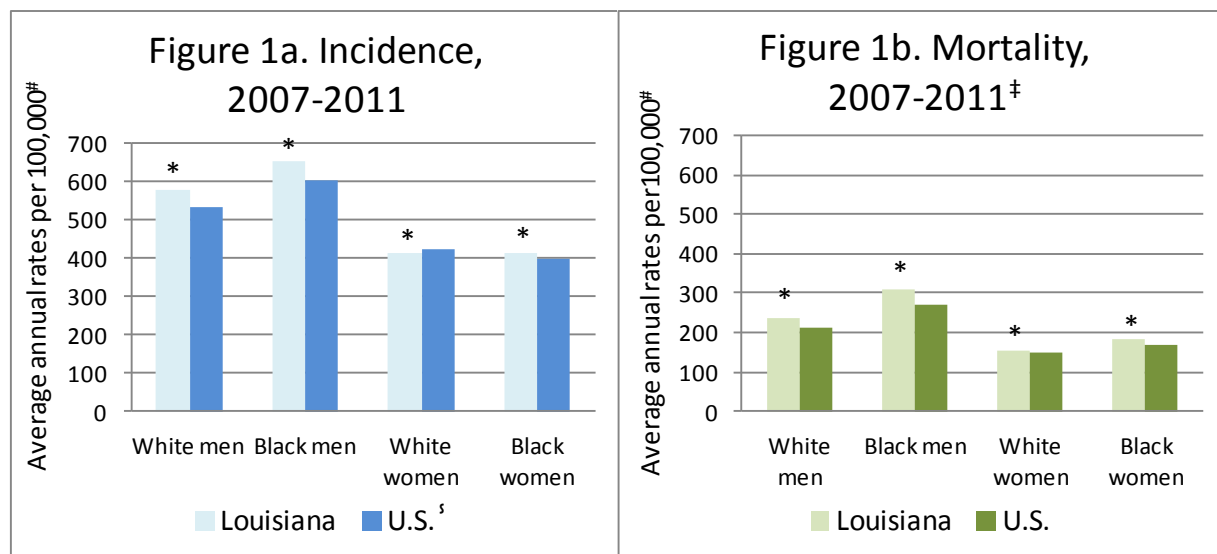
Region 8: Northeast Region

Caldwell Parish
East Carroll Parish
Franklin Parish
Jackson Parish
Lincoln Parish
Madison Parish
Morehouse Parish
Ouachita Parish
Richland Parish
Tensas Parish
Union Parish
West Carroll Parish

Region 9: Northlake Region

Livingston Parish
St. Helena Parish
St. Tammany Parish
Tangipahoa Parish
Washington Parish

Figure 1. All Cancers Combined



Average Annual Age-Adjusted (2000 U.S.) Rates per 100,000.

* The Louisiana rate differs significantly from the U.S. rate ($p < 0.05$).

[§] U.S. incidence rates are from the SEER Program (18 regions) of the National Cancer Institute.

[‡] Mortality data were obtained from the NCHS (National Center for Health Statistics).

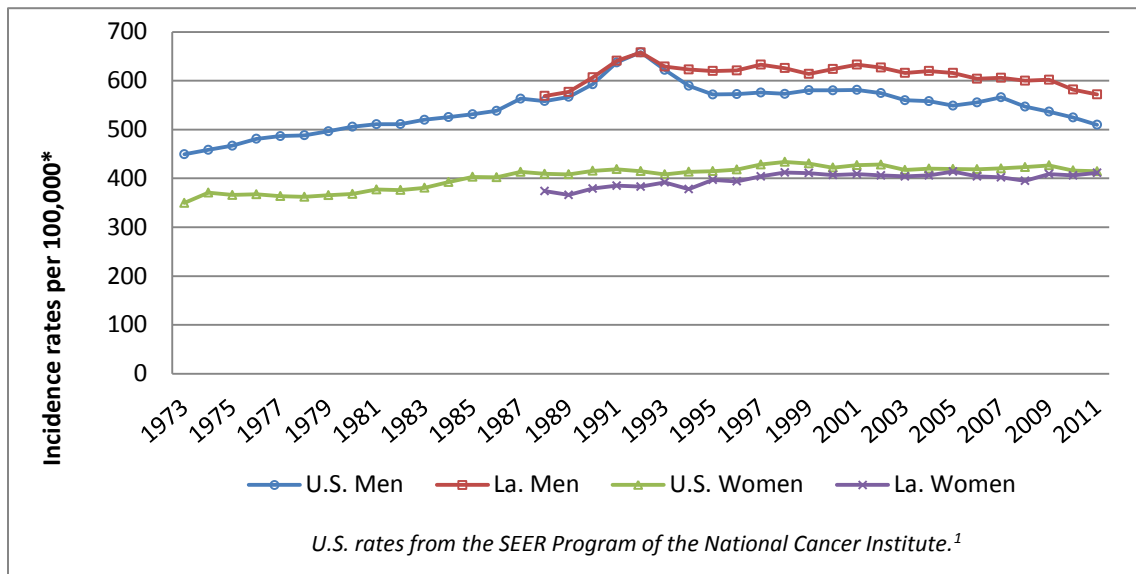
Almost 22,831 new cases of invasive cancer were diagnosed each year, 2007-2011, in Louisiana. If all race/sex groups are combined, cancers of the prostate, lung, breast, and colorectum (in that order) are the most frequently diagnosed cancers in Louisiana (Tables A-B). In the U.S., however, the following is the order of highest rates: prostate, breast, lung, and colorectum. These four cancers account for over half of all new diagnosed invasive cancers for both Louisiana and U.S. (55.3% and 51.8%, respectively).

Cancer caused an average of about 9,093 deaths per year in Louisiana in 2007-2011, stable from 2007-2011. Compared to U.S., Louisiana has significantly higher mortality rates than U.S. among four race/sex groups.

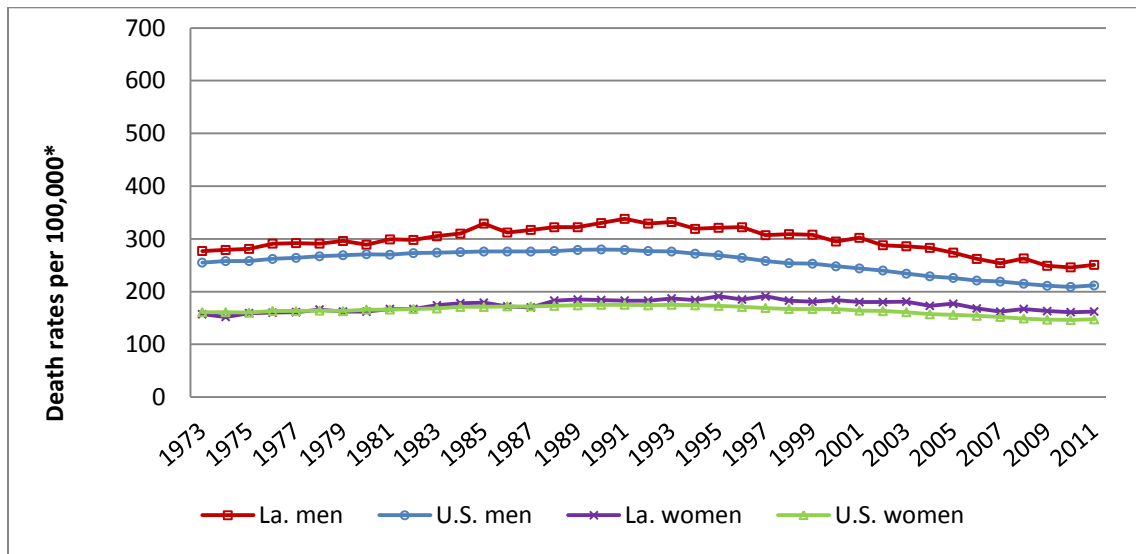
Over half the cancer deaths in both Louisiana and the U.S. were attributed to lung, colorectal, breast, and pancreatic cancers. While cancer mortality rates have been declining in Louisiana and the U.S. since the early 1990s, this decline is more rapid among men than women.

Figure 2. Time Trends: All Cancers Combined

Incidence, 1973-2011



Mortality, 1973-2011²



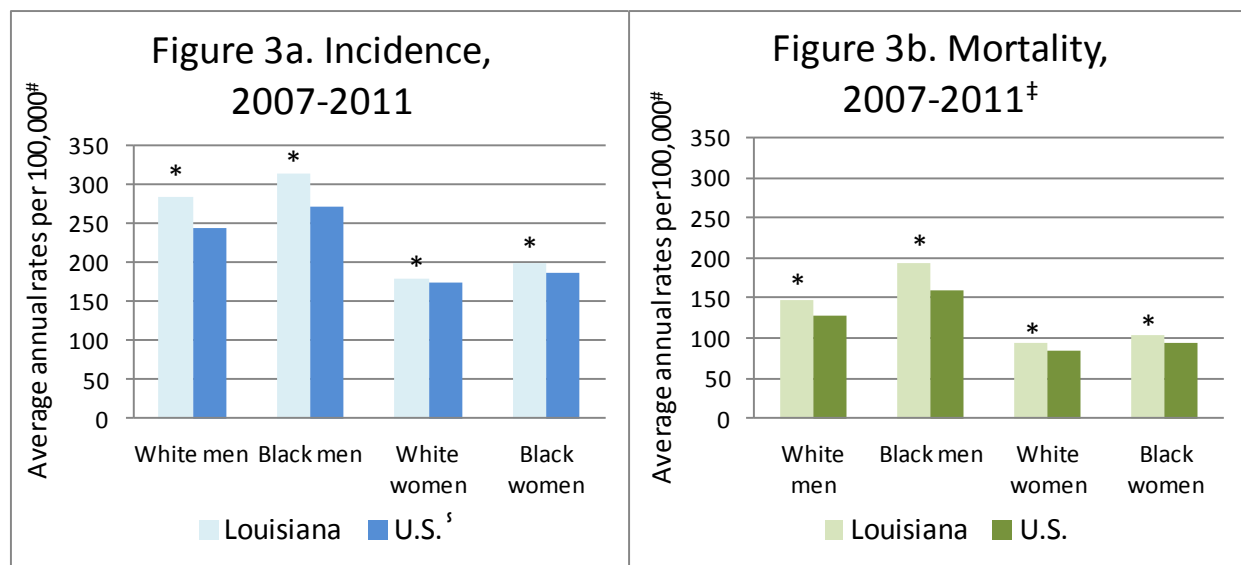
*All rates are age adjusted to the U.S. 2000 standard.

¹Surveillance, Epidemiology, and End Results (SEER) Program (www.seer.cancer.gov) SEER*Stat Database: Incidence - SEER 9 Regs Research Data, Nov 2013 Sub (1973-2011) <Katrina/Rita Population Adjustment> - Linked To County Attributes - Total U.S., 1969-2012 Counties, National Cancer Institute, DCCPS, Surveillance Research Program, Surveillance Systems Branch, released April 2014, based on the November 2013 submission.

² Mortality data were obtained from the NCHS (National Center for Health Statistics).

Cancer incidence and mortality are higher for men in Louisiana than in the U.S. overtime; however, both trends have been declining for men in Louisiana and the U.S.. For women, the declining trend was observed in mortality rate for Louisiana and the U.S..

Figure 3. Tobacco-Related Cancer



Average Annual Age-Adjusted (2000 U.S.) Rates per 100,000.

* The Louisiana rate differs significantly from the U.S. rate (p < 0.05).

[§] U.S. incidence rates are from the SEER Program (18 regions) of the National Cancer Institute.

[‡] Mortality data were obtained from the NCHS (National Center for Health Statistics).

The American Cancer Society reports¹ that tobacco use is a risk factor for cancers of the nasopharynx, nasal cavity and paranasal sinuses, lip, oral cavity, pharynx, larynx, lung, esophagus, stomach, colorectum, pancreas, cervix, uterine, ovary (mucinous), kidney, bladder, and acute myeloid leukemia. Approximately one third of new cancers and almost half of cancer deaths each year in Louisiana and the U.S. are tobacco-related.

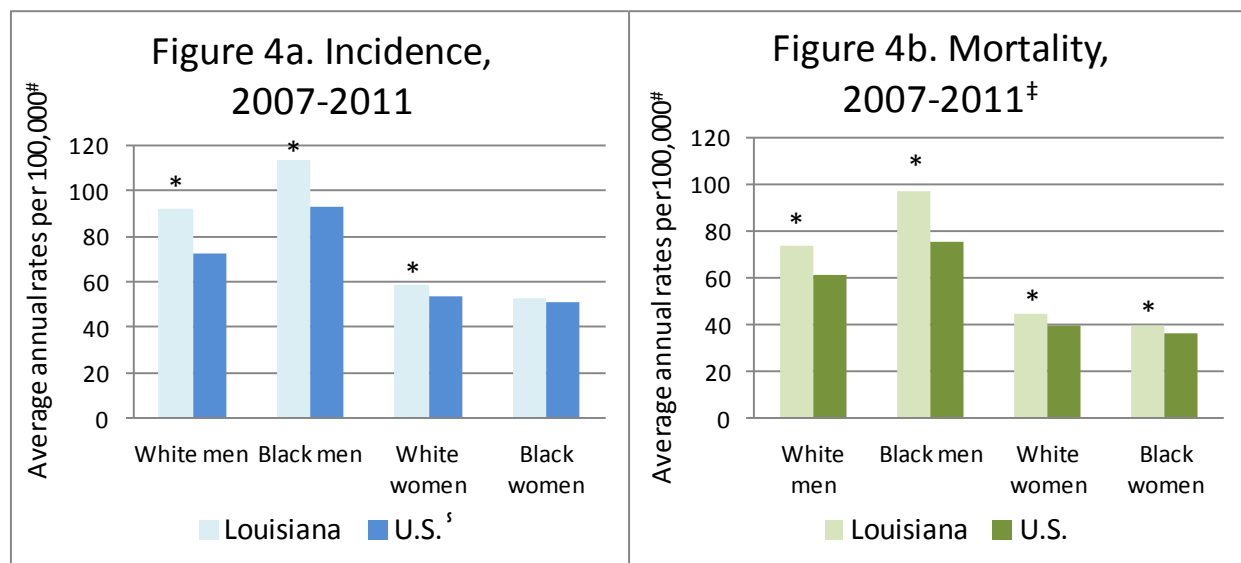
In Louisiana, both the incidence and the mortality rates of tobacco-related cancers are significantly higher than those for the U.S. for the four major race-sex groups. ***Despite this, Louisiana has the third-lowest cigarette taxes in the nation.***

According to the CDC's 2013 Behavioral Risk Factor Surveillance Survey,² Louisiana ranks 7th in the prevalence of smoking. That year, 27.3% of Louisiana men smoked, vs. 21.6% nationwide; 20.0% of Louisiana women smoked, vs. 17.2 % nationally.

¹American Cancer Society. Atlanta, Ga. Available at <http://www.cancer.org>.

²Available at <http://apps.nccd.cdc.gov/brfss/>.

Figure 4. Lung Cancer



Average Annual Age-Adjusted Rates (2000 U.S.) per 100,000.

* The Louisiana rate differs significantly from the U.S. rate ($p < 0.05$).

[§] U.S. incidence rates are from the SEER Program (18 regions) of the National Cancer Institute.

[‡] Mortality data were obtained from the NCHS (National Center for Health Statistics).

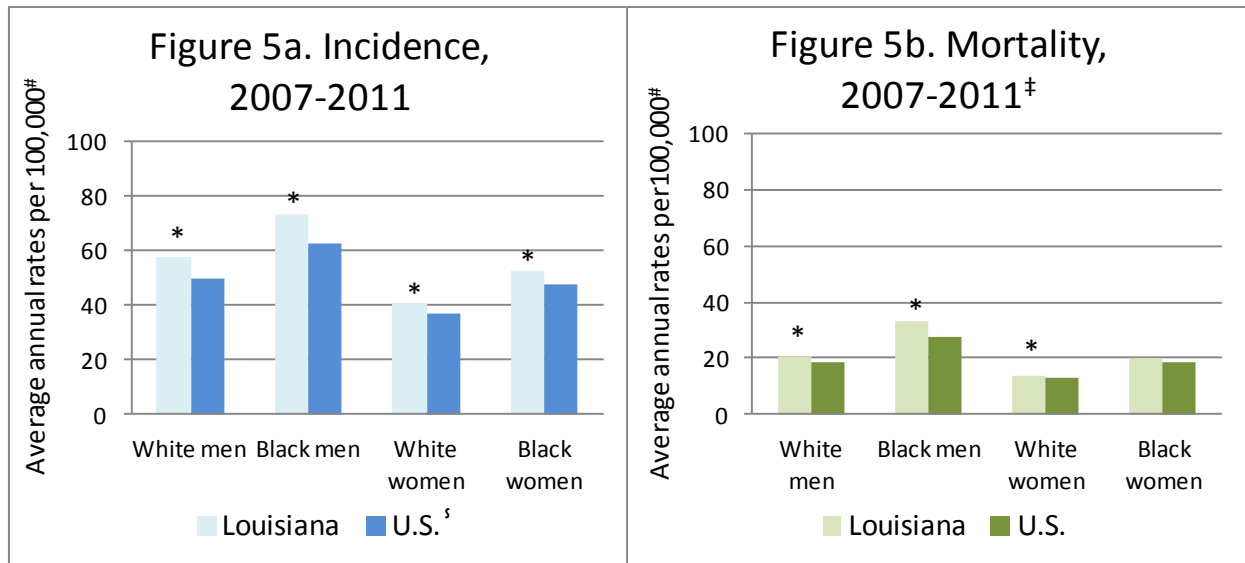
Lung cancer accounted for 14%-15% of all new cancer diagnoses between 2007 and 2011 and 28%-30% cancer deaths between 2007 and 2011, in the U.S. and Louisiana. Lung cancer incidence rates are significantly higher in Louisiana than in the U.S. for men and for white women, and Louisiana mortality exceeds the national levels for all four race-sex groups.

Among men in both Louisiana and the U.S., lung cancer incidence and mortality rates have been trending strongly downward for over 20 years, while for women the rates began tapering off more recently and declining slightly, after a long gradual rise.

Risk factors for lung cancer: The American Cancer Society states that cigarette smoking is the most important risk factor and that the risk increases with the quantity and duration of cigarette use. Other risk factors include cigar and pipe smoking; exposures to secondhand smoke, radon, asbestos (particularly among smokers), certain metals and organic chemicals, radiation, air pollution, diesel exhaust, and paint; family history of lung cancer; and probably a history of tuberculosis.¹

¹ American Cancer Society. Atlanta, Ga. Available at <http://www.cancer.org>.

Figure 5. Colorectal Cancer



Average Annual Age-Adjusted (2000 U.S.) Rates per 100,000.

* The Louisiana rate differs significantly from the U.S. rate ($p < 0.05$).

[§] U.S. incidence rates are from the SEER Program (18 regions) of the National Cancer Institute.

[‡] Mortality data were obtained from the NCHS (National Center for Health Statistics).

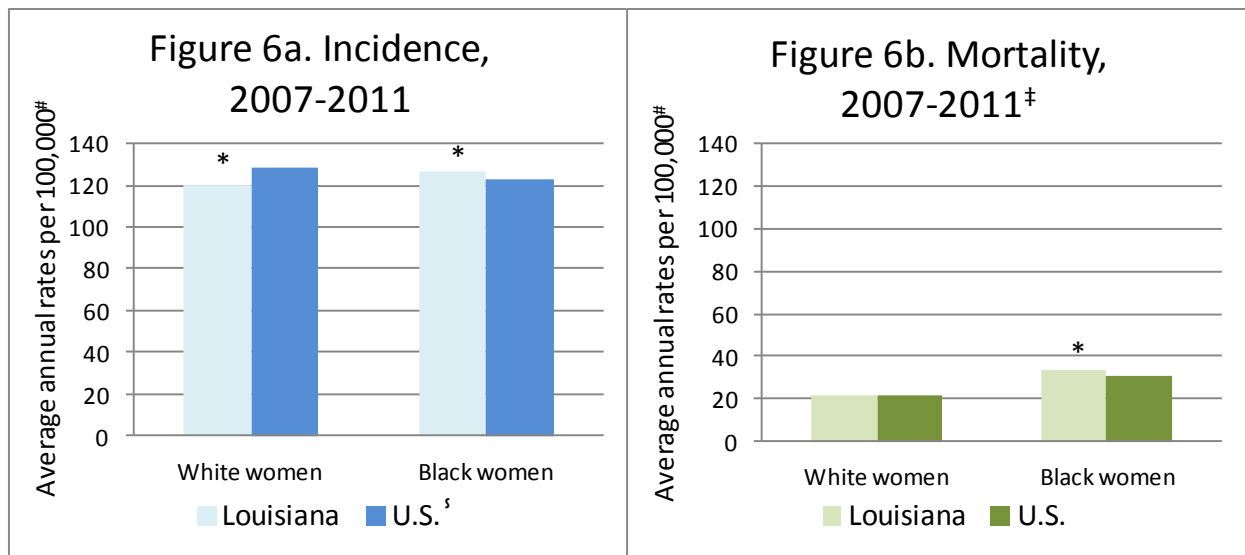
For Louisiana men and white women, colorectal cancer was the third most commonly diagnosed cancer in 2007-2011; for black women it ranked second. Nationwide and in Louisiana, colorectal cancer also is the second most common cause of death for all major race/sex groups combined in 2007-2011. Since 2000, death rates from colorectal cancer have trended downward about 25% in the U.S. and about 26% in Louisiana.

Many cases of colorectal cancer could be prevented--and many deaths could be avoided--through the use of screening options such as fecal occult blood tests and endoscopy. Despite this, over half of the cases are diagnosed after they have spread to other organs.

Risk factors: Risk increases with age. In addition, according to the American Cancer Society, the following factors can increase the likelihood of this diagnosis: obesity, physical inactivity, long-term smoking, alcohol consumption, a diet high in red and/or processed meats, a family history of colon cancer or polyps, certain hereditary colorectal conditions, and possibly low consumption levels of fruits and vegetables.¹

¹American Cancer Society. Atlanta, Ga. Available at <http://www.cancer.org>.

Figure 6. Female Breast Cancer



Average Annual Age-Adjusted (2000 U.S.) Rates per 100,000.

* The Louisiana rate differs significantly from the U.S. rate ($p < 0.05$).

[§] U.S. incidence rates are from the SEER Program (18 regions) of the National Cancer Institute.

[‡] Mortality data were obtained from the NCHS (National Center for Health Statistics).

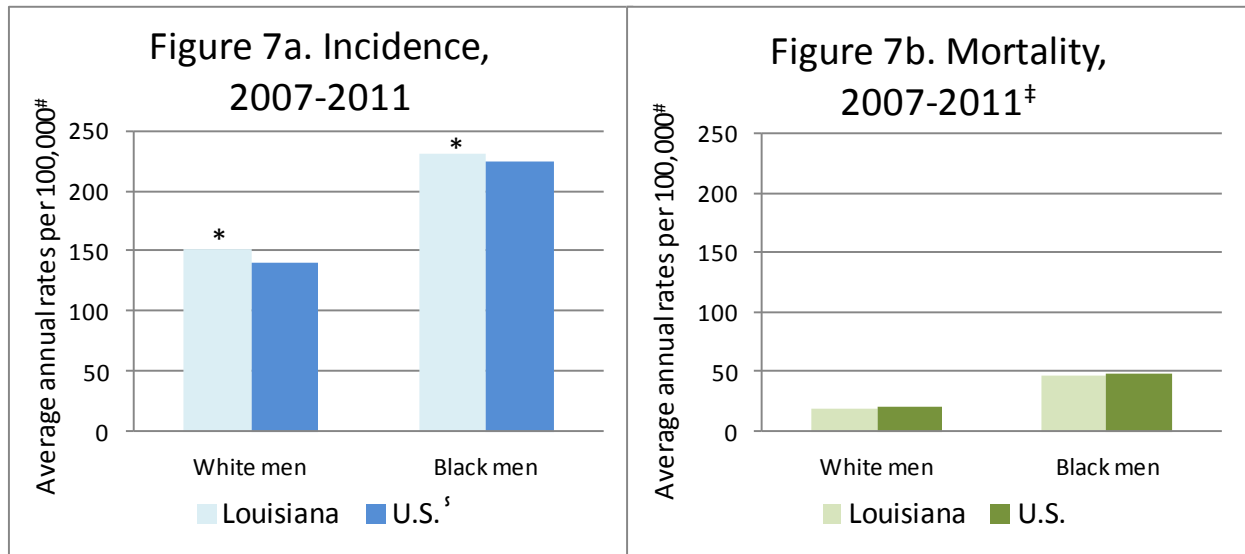
Breast cancer is the most frequently diagnosed cancer among women, both in Louisiana and the U.S. Black women have significantly higher rates than U.S. in both incidence and mortality rates in 2007-2011. Because of early detection and improved treatment, mortality rates have been declining for about 20 years, and since 2000 they have fallen about 18% in the U.S.

According to the American Cancer Society, the most important risk factor for breast cancer is age. Family history, a long menstrual history, never having had children, having a first child after age 30, recent use of oral contraceptives, weight gain after as an adult (age 18), being overweight or obese, high-dose radiation to the chest, use of menopausal hormone therapy (combined estrogen and progestin), physical inactivity, and daily consumption of alcohol also increase the likelihood of developing breast cancer.¹

Continued efforts to expand early detection programs can narrow these gaps. Information about free or reduced cost mammograms is available at 888/599-1073.

¹ American Cancer Society. Atlanta, Ga. Available at <http://www.cancer.org>.

Figure 7. Prostate Cancer



Average Annual Age-Adjusted (2000 U.S.) Rates per 100,000.

* The Louisiana rate differs significantly from the U.S. rate ($p < 0.05$).

[§] U.S. incidence rates are from the SEER Program (18 regions) of the National Cancer Institute.

[‡] Mortality data were obtained from the NCHS (National Center for Health Statistics).

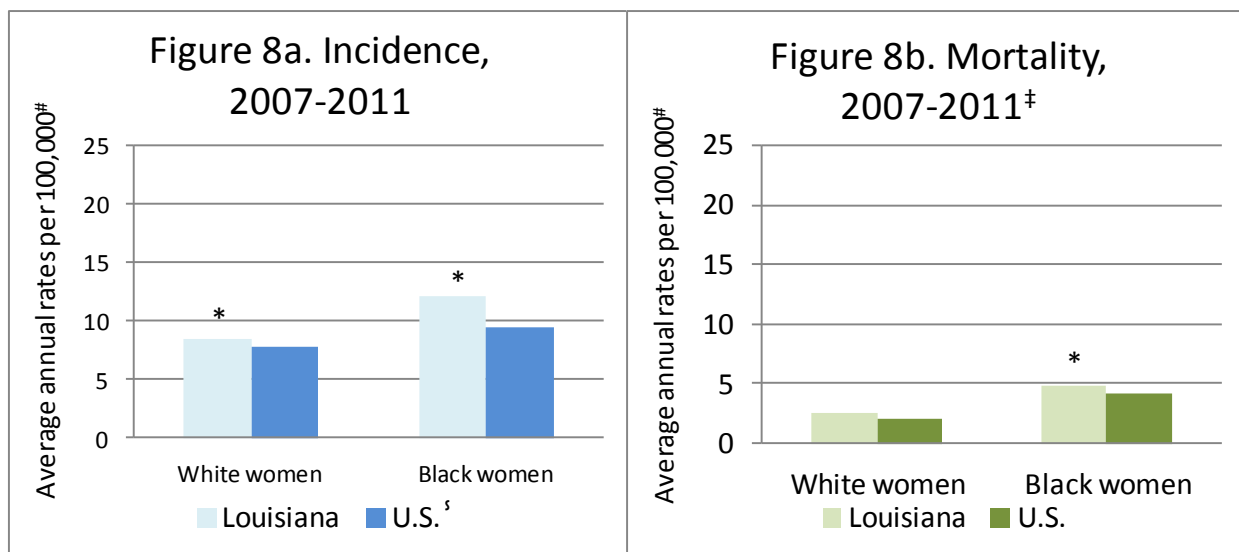
Prostate cancer is the most commonly diagnosed cancer among men, because of its relatively favorable prognosis it is not the most fatal cancer. Prostate cancer incidence and mortality are markedly higher among black men than among white men, but the reasons for these disparities are not fully understood. Prostate incidence rates in Louisiana are significantly higher than in U.S. for both white and black men; however, there are no statistical significant differences in mortality rate between Louisiana and U.S. for these two groups.

The well-established risk factors are age, race, and family history of prostate cancer. “A diet high in processed meats or dairy products may also be a risk factor, and obesity appears to increase risk of aggressive prostate cancer,” the American Cancer Society reports.¹

The PSA test, which measures a prostate-specific antigen in the blood, was introduced in the late 1980s and permits the early detection of prostate cancer, before symptoms are noticeable. Because its effectiveness in improving survival and quality of life is still controversial, major scientific and medical organizations recommend that men discuss the PSA test with their physicians.

¹ American Cancer Society. Atlanta, GA. Available at <http://www.cancer.org>.

Figure 8. Cervical Cancer



Average Annual Age-Adjusted (2000 U.S.) Rates per 100,000.

* The Louisiana rate differs significantly from the U.S. rate ($p < 0.05$).

[§] U.S. incidence rates are from the SEER Program (18 regions) of the National Cancer Institute.

[‡] Mortality data were obtained from the NCHS (National Center for Health Statistics).

Screening programs using Pap tests allow precancerous lesions to be detected and removed before they become invasive and spread. As a result, U.S. deaths from cervical cancer have fallen markedly, from 6.7 per 100,000 in 1969 to 2.1 in 2011 for white women and from 17.8 in 1969 to 4.1 in 2011 for black women. Incidence also continues to fall.

Louisiana rates for white women approximate national rates. Black women, however, experience significantly higher incidence and mortality than their national counterparts. Although they were slightly less likely to have had a Pap test in the preceding three years (2012 data),¹ Black women in Louisiana were less likely to be diagnosed with advanced disease than counterparts nationwide.

Risk factors for cervical cancer, according to the American Cancer Society, include infection with certain types of human papillomavirus (HPV), having sex at an early age or with multiple partners, immunosuppression, having a large number of children, and cigarette smoking.² The U.S. Food and Drug Administration has approved Gardasil[®] and Cervaris[®] vaccines to prevent the most common HPV infections that cause cervical cancer, for use by women aged 9-26. In addition, many medical organizations recommend that women over 30 receive routine screening for HPV.³

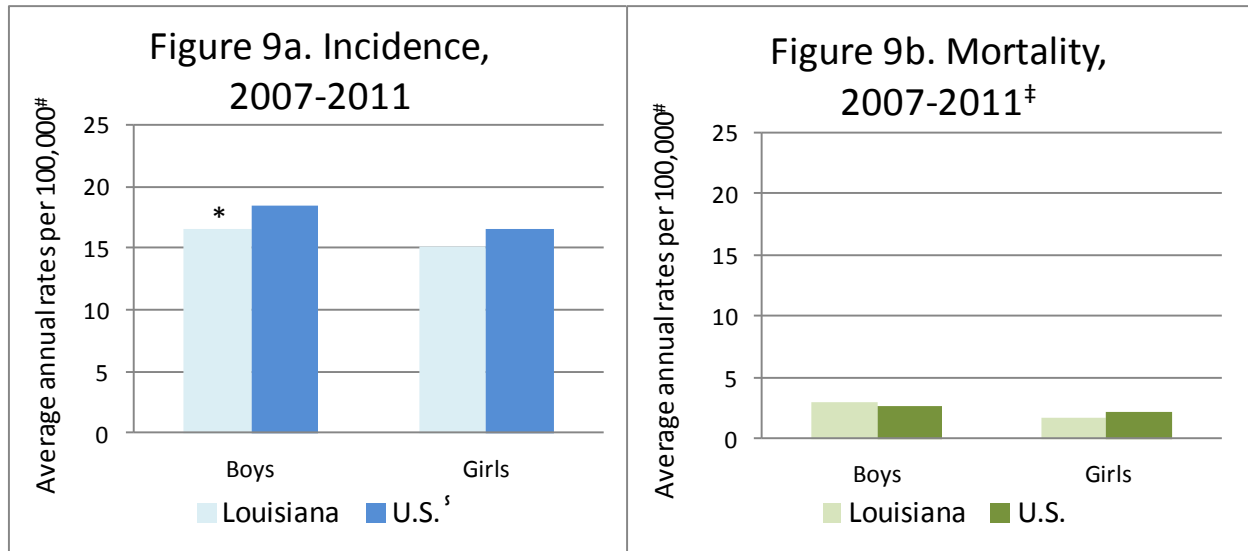
Information about breast and cervical cancer screening programs for uninsured and under-insured women is available by calling 888/599-1073.

¹ CDC, Behavioral Risk Factor Surveillance System: <http://apps.nccd.cdc.gov/brfss/>.

² American Cancer Society. Atlanta, GA. Available at <http://www.cancer.org>.

³ <http://www.cancer.org/Cancer/News/ExpertVoices/post/2012/03/14/Is-a-Pap-test-necessary-every-year.aspx>

Figure 9. Cancer among Children and Adolescents Aged 0-19



[#]Average Annual Age-Adjusted (2000 U.S.) Rates per 100,000.

*The Louisiana rate differs significantly from the U.S. rate ($p < 0.05$).

[§]U.S. incidence rates are from the SEER Program (18 regions) of the National Cancer Institute.

[‡] Mortality data were obtained from the NCHS (National Center for Health Statistics).

Cancer incidence rates among those aged 0-19 boys were significantly lower in Louisiana than in the U.S. from 2007-2011. Louisiana mortality rates for those aged 0-19 were slightly lower than for U.S. children and adolescents (2.3 per 100,000 vs. 2.4 per 100,000) died between 2007 and 2011, but the difference was not significant.

The cancers most commonly diagnosed in Louisiana among the 0-19 age-group continue to be leukemia, malignant brain cancer, and lymphomas.

Advances in treatment have led to a steady decline in cancer deaths for children and adolescents. In 1975, the mortality rate was 5.1 per 100,000 youth, age 0-19, in the US, while in 2011 it dropped to 2.4 per 100,000.

Figure 10. Stage at Diagnosis and Survival

Stage at diagnosis describes whether the cancer has spread and, if so, how far. This information provides important guidance for physicians planning treatment and helps predict survival. The four most common categories are:

In Situ (AJCC Stage 0): Tumor cells have not invaded, or spread, into the surrounding cells.

Localized (AJCC Stage I): The tumor is found only in the area of the body where it began.

Regional (AJCC Stages 2 and 3): The cancer has invaded regional tissue and/or lymph nodes. For breast cancer, this stage also includes tumors at least 2 cm. in diameter, regardless of invasion.

Distant (AJCC Stage 4): The cancer has spread, or metastasized, to distant parts of the body.

Those diagnosed with advanced disease are more likely to undergo more aggressive and expensive treatments, as well as facing worse prognosis.

Diagnosis by Stage, 2007-2011, in Louisiana and the U.S.							
Stage at diagnosis	Female Breast Cancer			Colorectal Cancer			Cervical Cancer
	Louisiana	U.S.		Louisiana	U.S.		Louisiana U.S.
In situ	17.0%	20.2%		4.6%	4.5%		Not available
Localized	49.8%	49.9%		39.3%	38.4%		45.1% 45.8%
Regional	26.6%	23.8%		32.9%	33.0%		37.4% 35.7%
Distant	5.2%	4.5%		19.4%	18.8%		12.4% 13.4%
Unknown	1.3%	1.7%		3.8%	5.3%		5.1% 5.2%
SEER Summary Stage 2000. U.S. data from National Cancer Institute SEER Program (SEER 18 registries).							

The following table shows the effect of stage on survival for three diseases with screening techniques.

5-Year Survival with Cancers That Can Be Detected Early								
Stage at Diagnosis	Female Breast Cancer			Colorectal Cancer			Cervical Cancer	
	Louisiana	U.S.		Louisiana	U.S.		Louisiana	U.S.
<i>In situ</i>	100%	100%		91.5%*	94.7%		Not available	
<i>Localized</i>	95.2%*	98.4%		86.0%*	89.7%		85.7%*	91.0%
<i>Regional</i>	79.0%*	83.9%		66.3%*	69.3%		51.2%*	57.4%
<i>Distant</i>	18.3%*	24.1%		10.7%	11.9%		18.0%	16.6%
Relative survival for cases diagnosed 2000-2010, followed through 2011. Data from National Cancer Institute SEER Program (SEER 18 registries).								
*Louisiana rate differs significantly (p < 0.05) from SEER rate.								

Table A1. Average Annual Number of Cancer Cases, 2007-2011, Louisiana

Primary Site	All Races			Whites			Blacks			AI/AN ¹ & APis ²		
	Total ³	Males	Females	Total ³	Males	Females	Total ³	Males	Females	Total ³	Males	Females
<i>Invasive Cancers⁴</i>												
All Sites Combined	22,831	12,460	10,371	16,371	8,977	7,394	6,259	3,378	2,881	178	91	87
Oral Cavity and Pharynx	607	441	166	455	335	119	146	103	44	6	3	2
Lip	35	29	5	33	28	5	2	1	1	0	0	0
Tongue	171	123	48	136	100	36	34	22	12	1	0	1
Salivary Gland	55	34	21	42	28	14	13	7	7	0	0	0
Floor of Mouth	37	27	10	28	19	9	9	7	1	0	0	0
Gum and Other Mouth	85	49	36	62	36	26	22	12	10	1	1	0
Nasopharynx	32	25	7	17	13	4	12	11	1	2	1	1
Tonsil	107	88	19	83	69	14	23	18	5	1	1	0
Oropharynx	28	22	6	16	12	4	12	10	2	0	0	0
Hypopharynx	45	36	9	28	23	5	17	13	3	0	0	0
Other	13	9	4	10	7	3	3	2	1	0	0	0
Digestive System	4,364	2,438	1,926	2,940	1,674	1,265	1,374	736	638	48	27	21
Esophagus	241	191	51	175	143	32	64	45	19	2	2	0
Stomach	370	224	146	202	130	72	162	91	70	7	3	4
Small Intestine	125	66	59	77	42	35	47	23	24	1	1	0
Colon and Rectum	2,380	1,263	1,118	1,628	884	744	733	369	364	18	10	9
Colon excluding rectum	1,692	860	832	1,151	597	554	528	257	271	13	6	6
Rectum and Rectosigmoid Junction	688	402	286	477	287	190	205	112	93	6	3	2
Anus, Anal Canal and Anorectum	84	35	48	65	26	39	19	9	9	0	0	0
Liver and Intrahepatic Bile Duct	373	280	93	232	173	59	129	98	32	12	9	3
Liver	351	268	84	215	164	52	125	95	30	11	8	3
Intrahepatic Bile Duct	21	12	9	17	10	7	4	2	2	1	0	0
Gallbladder	50	17	33	29	11	19	20	6	14	0	0	0
Other Biliary Tract	76	42	34	58	33	25	16	8	8	1	1	1
Pancreas	613	303	310	433	220	213	173	80	93	6	2	4
Retroperitoneum	17	8	9	13	6	7	4	1	2	0	0	0
Peritoneum, Omentum, Mesentery	21	2	19	18	1	17	3	1	2	0	0	0
Other	15	9	7	10	5	5	5	3	2	0	0	0
Respiratory System	3,762	2,225	1,537	2,722	1,572	1,150	1,013	636	377	27	17	10
Nose, Nasal Cavity and Middle Ear	35	23	12	26	17	8	9	5	3	0	0	0
Larynx	261	206	55	175	137	39	85	69	16	1	1	0
Lung and Bronchus	3,456	1,989	1,467	2,513	1,413	1,100	917	560	357	25	16	10
Pleura	2	1	1	1	0	1	1	0	0	0	0	0
Trachea and Other	10	7	3	7	5	2	2	1	1	0	0	0
Bones and Joints	38	18	20	27	12	15	11	6	5	0	0	0
Soft Tissue (Incl. heart)	169	89	80	114	65	49	52	23	30	3	2	1
Skin (Excl. basal and squamous)	737	449	289	713	436	277	21	11	10	1	1	1
Melanoma of the Skin	666	402	264	652	395	256	12	5	6	1	1	0
Other Non-Epithelial Skin	71	46	25	61	41	21	9	5	4	0	0	0
Breast	3,089	27	3,063	2,162	19	2,144	902	8	894	23	0	23
Female Genital System	1,029	--	1,029	705	--	705	310	--	310	12	--	12
Cervix Uteri	216	--	216	128	--	128	86	--	86	3	--	3
Corpus and Uterus, NOS	453	--	453	312	--	312	136	--	136	5	--	5
Corpus Uteri	436	--	436	303	--	303	128	--	128	5	--	5
Uterus, NOS	17	--	17	9	--	9	8	--	8	0	--	0
Ovary	253	--	253	183	--	183	66	--	66	3	--	3
Vagina	22	--	22	16	--	16	7	--	7	0	--	0
Vulva	65	--	65	52	--	52	13	--	13	1	--	1
Other	20	--	20	15	--	15	4	--	4	0	--	0
Male Genital System	3,808	3,808	--	2,554	2,554	--	1,227	1,227	--	19	19	--
Prostate	3,694	3,694	--	2,458	2,458	--	1,210	1,210	--	18	18	--
Testis	89	89	--	79	79	--	9	9	--	1	1	--
Penis	20	20	--	14	14	--	6	6	--	0	0	--
Other	5	5	--	3	3	--	2	2	--	0	0	--
Urinary System	1,892	1,276	616	1,487	1,030	456	395	239	156	8	6	2
Urinary Bladder (Incl. In Situ)	880	670	210	736	570	166	138	95	43	5	4	1
Kidney and Renal Pelvis	968	578	391	716	436	280	248	139	109	4	2	2
Ureter	30	19	11	26	17	9	4	2	2	0	0	0
Other	14	10	4	9	7	2	6	3	3	0	0	0
Eye and Orbit	30	15	16	27	13	14	3	1	2	0	0	0
Brain and Nervous System	260	140	120	203	111	92	55	27	27	3	2	1
Brain	245	134	111	191	106	84	51	26	25	3	2	1

Cranial Nerves and Other NS	16	6	9	12	5	7	3	1	2	0	0	0
Endocrine System	531	141	390	416	116	300	107	22	85	7	2	5
Thyroid	497	121	376	393	103	290	96	16	80	6	2	5
Thymus and Other Endocrine	35	20	15	23	13	10	11	6	5	0	0	0
Lymphoma	1,050	567	482	820	446	375	219	116	103	9	5	4
Hodgkin Lymphoma	134	72	62	91	49	41	40	21	19	3	2	2
Non-Hodgkin lymphoma	915	495	420	730	397	333	178	95	84	6	3	3
Myeloma	297	164	133	161	93	68	133	69	64	2	1	1
Leukemia	560	317	244	434	251	183	121	63	58	4	3	2
Lymphocytic Leukemia	243	145	99	198	117	81	43	26	17	1	1	0
Acute Lymphocytic Leukemia	61	34	27	46	24	22	14	9	5	1	1	0
Chronic Lymphocytic Leukemia	163	97	65	135	82	54	27	15	11	0	0	0
Other Lymphocytic Leukemia	19	13	6	17	11	6	2	2	0	0	0	0
Myeloid and Monocytic Leukemia	284	155	129	212	122	90	69	32	38	3	2	1
Acute Myeloid Leukemia	173	90	82	128	70	57	43	19	24	2	1	1
Acute Monocytic Leukemia	11	7	4	9	6	3	2	1	1	0	0	0
Chronic Myeloid Leukemia	87	51	37	65	40	25	22	11	11	1	0	0
Other Myeloid/Monocytic Leukemia	13	7	5	10	6	4	3	1	1	0	0	0
Other Leukemia	33	17	16	24	12	12	9	5	4	0	0	0
Other Acute Leukemia	13	7	7	9	4	5	4	3	2	0	0	0
Aleukemic, Subleukemic and NOS	20	10	10	15	8	7	5	2	2	0	0	0
Mesothelioma	62	46	16	51	39	12	11	7	4	0	0	0
Kaposi Sarcoma	21	18	3	13	11	2	7	6	1	0	0	0
Ill-Defined and Unknown Sites	523	280	243	369	200	169	149	77	72	5	3	2

In Situ Cancers (not included above)

Breast In Situ	633	4	629	449	2	447	179	2	177	5	0	5
----------------	-----	---	-----	-----	---	-----	-----	---	-----	---	---	---

¹American Indians/Alaska Natives

²Asians and Pacific Islanders

³The total number for each cancer site may not have the same number as the sum of male and female due to the rounding

⁴Except for urinary bladder (in situ and invasive), only invasive cases are included.

-- Not applicable

Table A2. Percent Distribution of Cancer Cases, 2007-2011, Louisiana

Primary Site	All Races			Whites			Blacks			AI/AN ¹ & APis ²		
	Total	Males	Females	Total	Males	Females	Total	Males	Females	Total	Males	Females
<i>Invasive Cancers³</i>												
All Sites Combined	100.0	100.0	100.0	100.0	100.0	100.0	100.0	100.0	100.0	100.0	100.0	100.0
Oral Cavity and Pharynx	2.7	3.5	1.6	2.8	3.7	1.6	2.3	3.0	1.5	3.3	3.7	2.7
Lip	0.2	0.2	0.1	0.2	0.3	0.1	0.0	0.0	0.0	0.0	0.0	0.0
Tongue	0.7	1.0	0.5	0.8	1.1	0.5	0.5	0.7	0.4	0.6	0.4	0.7
Salivary Gland	0.2	0.3	0.2	0.3	0.3	0.2	0.2	0.2	0.2	0.2	0.2	0.2
Floor of Mouth	0.2	0.2	0.1	0.2	0.2	0.1	0.1	0.2	0.0	0.1	0.2	0.0
Gum and Other Mouth	0.4	0.4	0.3	0.4	0.4	0.3	0.4	0.4	0.4	0.4	0.7	0.2
Nasopharynx	0.1	0.2	0.1	0.1	0.1	0.1	0.2	0.3	0.0	1.2	1.3	1.1
Tonsil	0.5	0.7	0.2	0.5	0.8	0.2	0.4	0.5	0.2	0.4	0.7	0.2
Oropharynx	0.1	0.2	0.1	0.1	0.1	0.1	0.2	0.3	0.1	0.0	0.0	0.0
Hypopharynx	0.2	0.3	0.1	0.2	0.3	0.1	0.3	0.4	0.1	0.2	0.2	0.2
Other	0.1	0.1	0.0	0.1	0.1	0.0	0.0	0.1	0.0	0.0	0.0	0.0
Digestive System	19.1	19.6	18.6	18.0	18.7	17.1	21.9	21.8	22.1	27.2	30.2	24.0
Esophagus	1.1	1.5	0.5	1.1	1.6	0.4	1.0	1.3	0.6	1.0	2.0	0.0
Stomach	1.6	1.8	1.4	1.2	1.4	1.0	2.6	2.7	2.4	3.7	3.3	4.1
Small Intestine	0.5	0.5	0.6	0.5	0.5	0.5	0.7	0.7	0.8	0.7	0.9	0.5
Colon and Rectum	10.4	10.1	10.8	9.9	9.8	10.1	11.7	10.9	12.6	10.3	10.8	9.8
Colon	7.4	6.9	8.0	7.0	6.6	7.5	8.4	7.6	9.4	7.2	7.0	7.3
Rectum and Rectosigmoid Junction	3.0	3.2	2.8	2.9	3.2	2.6	3.3	3.3	3.2	3.1	3.7	2.5
Anus, Anal Canal and Anorectum	0.4	0.3	0.5	0.4	0.3	0.5	0.3	0.3	0.3	0.1	0.0	0.2
Liver and Intrahepatic Bile Duct	1.6	2.2	0.9	1.4	1.9	0.8	2.1	2.9	1.1	6.5	9.7	3.2
Liver	1.5	2.1	0.8	1.3	1.8	0.7	2.0	2.8	1.0	6.2	9.3	3.0
Intrahepatic Bile Duct	0.1	0.1	0.1	0.1	0.1	0.1	0.1	0.1	0.1	0.3	0.4	0.2
Gallbladder	0.2	0.1	0.3	0.2	0.1	0.3	0.3	0.2	0.5	0.2	0.2	0.2
Other Biliary Tract	0.3	0.3	0.3	0.4	0.4	0.3	0.3	0.2	0.3	0.8	0.7	0.9
Pancreas	2.7	2.4	3.0	2.6	2.5	2.9	2.8	2.4	3.2	3.6	2.2	5.0
Retroperitoneum	0.1	0.1	0.1	0.1	0.1	0.1	0.1	0.0	0.1	0.1	0.2	0.0
Peritoneum, Omentum, Mesentery	0.1	0.0	0.2	0.1	0.0	0.2	0.0	0.0	0.1	0.0	0.0	0.0
Other	0.1	0.1	0.1	0.1	0.1	0.1	0.1	0.1	0.1	0.1	0.2	0.0
Respiratory System	16.5	17.9	14.8	16.6	17.5	15.6	16.2	18.8	13.1	15.0	18.7	11.2
Nose, Nasal Cavity and Middle Ear	0.2	0.2	0.1	0.2	0.2	0.1	0.1	0.2	0.1	0.2	0.4	0.0
Larynx	1.1	1.7	0.5	1.1	1.5	0.5	1.4	2.0	0.6	0.3	0.7	0.0
Lung and Bronchus	15.1	16.0	14.1	15.3	15.7	14.9	14.7	16.6	12.4	14.3	17.2	11.2
Pleura	0.0	0.0	0.0	0.0	0.0	0.0	0.0	0.0	0.0	0.0	0.0	0.0
Trachea and Other	0.0	0.1	0.0	0.0	0.1	0.0	0.0	0.0	0.0	0.2	0.4	0.0
Bones and Joints	0.2	0.1	0.2	0.2	0.1	0.2	0.2	0.2	0.2	0.2	0.4	0.0
Soft Tissue (Incl. heart)	0.7	0.7	0.8	0.7	0.7	0.7	0.8	0.7	1.0	1.7	1.8	1.6
Skin (Excl. basal and squamous)	3.2	3.6	2.8	4.4	4.9	3.7	0.3	0.3	0.4	0.8	0.9	0.7
Melanoma of the Skin	2.9	3.2	2.5	4.0	4.4	3.5	0.2	0.2	0.2	0.6	0.7	0.5
Other Non-Epithelial Skin	0.3	0.4	0.2	0.4	0.5	0.3	0.1	0.2	0.1	0.2	0.2	0.2
Breast	13.5	0.2	29.5	13.2	0.2	29.0	14.4	0.2	31.0	13.1	0.0	26.8
Female Genital System	4.5	--	9.9	4.3	--	9.5	5.0	--	10.8	6.5	--	13.3
Cervix Uteri	0.9	--	2.1	0.8	--	1.7	1.4	--	3.0	1.6	--	3.2
Corpus and Uterus, NOS	2.0	--	4.4	1.9	--	4.2	2.2	--	4.7	2.7	--	5.5
Corpus Uteri	1.9	--	4.2	1.8	--	4.1	2.0	--	4.4	2.6	--	5.3
Uterus, NOS	0.1	--	0.2	0.1	--	0.1	0.1	--	0.3	0.1	--	0.2
Ovary	1.1	--	2.4	1.1	--	2.5	1.0	--	2.3	1.8	--	3.7
Vagina	0.1	--	0.2	0.1	--	0.2	0.1	--	0.2	0.0	--	0.0
Vulva	0.3	--	0.6	0.3	--	0.7	0.2	--	0.4	0.3	--	0.7
Other	0.1	--	0.2	0.1	--	0.2	0.1	--	0.2	0.1	--	0.2
Male Genital System	16.7	30.6	--	15.6	28.4	--	19.6	36.3	--	10.4	20.5	--
Prostate	16.2	29.6	--	15.0	27.4	--	19.3	35.8	--	10.0	19.6	--
Testis	0.4	0.7	--	0.5	0.9	--	0.1	0.3	--	0.3	0.7	--
Penis	0.1	0.2	--	0.1	0.2	--	0.1	0.2	--	0.1	0.2	--
Other	0.0	0.0	--	0.0	0.0	--	0.0	0.1	--	0.0	0.0	--
Urinary System	8.3	10.2	5.9	9.1	11.5	6.2	6.3	7.1	5.4	4.7	6.6	2.7
Urinary Bladder (Incl. In Situ)	3.9	5.4	2.0	4.5	6.3	2.2	2.2	2.8	1.5	2.7	4.4	0.9
Kidney and Renal Pelvis	4.2	4.6	3.8	4.4	4.9	3.8	4.0	4.1	3.8	2.0	2.2	1.8
Ureter	0.1	0.2	0.1	0.2	0.2	0.1	0.1	0.1	0.1	0.0	0.0	0.0
Other	0.1	0.1	0.0	0.1	0.1	0.0	0.1	0.1	0.1	0.0	0.0	0.0
Eye and Orbit	0.1	0.1	0.2	0.2	0.1	0.2	0.1	0.0	0.1	0.0	0.0	0.0
Brain and Nervous System	1.1	1.1	1.2	1.2	1.2	1.2	0.9	0.8	0.9	1.6	2.0	1.1
Brain	1.1	1.1	1.1	1.2	1.2	1.1	0.8	0.8	0.9	1.5	1.8	1.1
Cranial Nerves and Other NS	0.1	0.1	0.1	0.1	0.1	0.1	0.1	0.0	0.1	0.1	0.2	0.0

Endocrine System	2.3	1.1	3.8	2.5	1.3	4.1	1.7	0.7	3.0	3.8	2.2	5.5
Thyroid	2.2	1.0	3.6	2.4	1.1	3.9	1.5	0.5	2.8	3.6	1.8	5.5
Thymus and Other Endocrine	0.2	0.2	0.1	0.1	0.1	0.1	0.2	0.2	0.2	0.2	0.4	0.0
Lymphoma	4.6	4.6	4.6	5.0	5.0	5.1	3.5	3.4	3.6	5.3	5.5	5.0
Hodgkin Lymphoma	0.6	0.6	0.6	0.6	0.5	0.6	0.6	0.6	0.7	1.8	1.8	1.8
Non-Hodgkin lymphoma	4.0	4.0	4.0	4.5	4.4	4.5	2.9	2.8	2.9	3.5	3.7	3.2
Myeloma	1.3	1.3	1.3	1.0	1.0	0.9	2.1	2.0	2.2	1.2	1.5	0.9
Leukemia	2.5	2.5	2.3	2.7	2.8	2.5	1.9	1.9	2.0	2.5	2.9	2.1
Lymphocytic Leukemia	1.1	1.2	1.0	1.2	1.3	1.1	0.7	0.8	0.6	0.8	1.1	0.5
Acute Lymphocytic Leukemia	0.3	0.3	0.3	0.3	0.3	0.3	0.2	0.3	0.2	0.7	1.1	0.2
Chronic Lymphocytic Leukemia	0.7	0.8	0.6	0.8	0.9	0.7	0.4	0.4	0.4	0.1	0.0	0.2
Other Lymphocytic Leukemia	0.1	0.1	0.1	0.1	0.1	0.1	0.0	0.1	0.0	0.0	0.0	0.0
Myeloid and Monocytic Leukemia	1.2	1.2	1.2	1.3	1.4	1.2	1.1	0.9	1.3	1.6	1.8	1.4
Acute Myeloid Leukemia	0.8	0.7	0.8	0.8	0.8	0.8	0.7	0.6	0.8	1.2	1.3	1.1
Acute Monocytic Leukemia	0.0	0.1	0.0	0.1	0.1	0.0	0.0	0.0	0.0	0.0	0.0	0.0
Chronic Myeloid Leukemia	0.4	0.4	0.4	0.4	0.4	0.3	0.3	0.3	0.4	0.3	0.4	0.2
Other Myeloid/Monocytic Leukemia	0.1	0.1	0.1	0.1	0.1	0.1	0.0	0.0	0.0	0.0	0.0	0.0
Other Leukemia	0.1	0.1	0.2	0.1	0.1	0.2	0.1	0.1	0.1	0.1	0.0	0.2
Other Acute Leukemia	0.1	0.1	0.1	0.1	0.0	0.1	0.1	0.1	0.1	0.1	0.0	0.2
Aleukemic, Subleukemic and NOS	0.1	0.1	0.1	0.1	0.1	0.1	0.1	0.1	0.1	0.0	0.0	0.0
Mesothelioma	0.3	0.4	0.2	0.3	0.4	0.2	0.2	0.2	0.1	0.0	0.0	0.0
Kaposi Sarcoma	0.1	0.1	0.0	0.1	0.1	0.0	0.1	0.2	0.0	0.1	0.2	0.0
Ill-Defined and Unknown Sites	2.3	2.2	2.3	2.3	2.2	2.3	2.4	2.3	2.5	2.6	2.9	2.3

¹American Indians/Alaska Natives

²Asians and Pacific Islanders

³Except for urinary bladder (in situ and invasive), only invasive cases are included.

-- Not applicable

Table B. Average Annual Cancer Incidence Rates,¹ 2007-2011, Louisiana

Primary Site	All Races			Whites			Blacks		
	Total	Males	Females	Total	Males	Females	Total	Males	Females
<i>Invasive Cancers²</i>									
All Sites Combined	487.3	591.3	410.0	484.1	578.1	413.1	511.3	652.1	415.4
Oral Cavity and Pharynx	12.6	19.7	6.5	13.2	20.6	6.5	11.1	17.7	6.1
Lip	0.7	1.5	0.2	1.0	1.9	0.2	^	^	^
Tongue	3.5	5.4	1.9	3.9	6.0	2.0	2.6	4.0	1.5
Salivary Gland	1.2	1.7	0.8	1.3	1.9	0.8	1.0	1.1	1.0
Floor of Mouth	0.7	1.1	0.4	0.8	1.2	0.5	0.6	1.1	^
Gum and Other Mouth	1.8	2.3	1.4	1.8	2.3	1.4	1.8	2.2	1.5
Nasopharynx	0.7	1.1	0.3	0.5	0.8	0.2	0.9	1.9	^
Tonsil	2.1	3.6	0.7	2.4	4.0	0.8	1.7	2.9	0.7
Oropharynx	0.6	1.0	0.2	0.5	0.7	0.2	0.9	1.8	^
Hypopharynx	0.9	1.6	0.3	0.8	1.3	0.3	1.3	2.4	0.5
Other	0.3	0.4	0.1	0.3	0.4	^	^	^	^
Digestive System	93.4	116.3	75.0	86.5	108.5	68.2	114.3	143.1	93.7
Esophagus	5.0	8.9	2.0	5.1	9.1	1.7	5.1	8.4	2.7
Stomach	8.1	11.0	5.8	6.0	8.6	3.9	14.1	19.0	10.6
Small Intestine	2.7	3.1	2.3	2.2	2.7	1.9	3.9	4.6	3.4
Colon and Rectum	51.0	60.8	43.5	48.0	57.6	40.2	61.0	73.3	52.8
Colon	36.6	42.3	32.3	34.0	39.6	29.6	44.7	52.0	39.9
Rectum and Rectosigmoid Junction	14.4	18.5	11.2	14.0	18.0	10.6	16.3	21.3	12.9
Anus, Anal Canal and Anorectum	1.8	1.6	1.9	1.9	1.6	2.2	1.5	1.5	1.4
Liver and Intrahepatic Bile Duct	7.6	12.4	3.6	6.7	10.8	3.2	9.5	16.0	4.4
Liver	7.1	11.8	3.2	6.2	10.2	2.8	9.2	15.5	4.1
Intrahepatic Bile Duct	0.5	0.6	0.4	0.5	0.6	0.4	0.4	^	^
Gallbladder	1.1	0.9	1.3	0.9	0.7	1.0	1.8	1.5	2.0
Other Biliary Tract	1.7	2.2	1.3	1.7	2.3	1.3	1.5	1.7	1.3
Pancreas	13.3	14.7	12.0	12.8	14.4	11.3	15.1	16.0	14.2
Retroperitoneum	0.4	0.4	0.4	0.4	0.4	0.4	0.3	^	^
Peritoneum, Omentum, Mesentery	0.5	^	0.8	0.5	^	0.9	^	^	^
Other	0.3	0.4	0.3	0.3	0.4	0.3	0.4	0.6	^
Respiratory System	80.5	107.7	59.7	79.6	102.3	61.9	84.9	127.3	55.4
Nose, Nasal Cavity and Middle Ear	0.7	1.1	0.5	0.8	1.1	0.5	0.7	1.0	0.5
Larynx	5.4	9.4	2.1	5.1	8.6	2.1	6.5	12.2	2.2
Lung and Bronchus	74.2	96.9	57.0	73.6	92.3	59.1	77.6	113.8	52.7
Pleura	^	^	^	^	^	^	^	^	^
Trachea and Other	0.2	0.3	^	0.2	0.3	^	^	^	^
Bones and Joints	0.9	0.9	0.9	0.9	0.8	1.0	0.8	0.8	0.7
Soft Tissue (Incl. heart)	3.7	4.2	3.3	3.5	4.3	2.9	4.0	3.8	4.1
Skin (Excl. basal and squamous)	16.1	22.1	11.9	21.9	28.9	16.8	1.8	2.0	1.5
Melanoma of the Skin	14.5	19.7	10.9	20.0	26.1	15.6	1.0	1.1	1.0
Other Non-Epithelial Skin	1.6	2.4	1.0	1.9	2.8	1.2	0.8	1.0	0.6
Breast	66.0	1.3	121.3	64.4	1.2	120.3	72.1	1.6	126.6
Female Genital System	22.1	--	41.1	21.2	--	40.3	25.4	--	44.6
Cervix Uteri	4.9	--	9.4	4.3	--	8.5	6.8	--	12.2
Corpus and Uterus, NOS	9.4	--	17.5	9.0	--	17.1	11.0	--	19.4
Corpus Uteri	9.1	--	16.9	8.8	--	16.6	10.3	--	18.2
Uterus, NOS	0.4	--	0.7	0.3	--	0.5	0.7	--	1.2
Ovary	5.4	--	9.9	5.4	--	10.1	5.6	--	9.6
Vagina	0.5	--	0.8	0.5	--	0.8	0.6	--	1.0
Vulva	1.4	--	2.6	1.6	--	2.9	1.0	--	1.8
Other	0.4	--	0.8	0.4	--	0.8	0.3	--	0.6
Male Genital System	78.4	174.3	--	72.7	158.2	--	98.3	233.8	--

Prostate	75.8	168.9	--	69.3	151.5	--	96.9	230.7	--
Testis	2.1	4.2	--	2.8	5.6	--	0.7	1.5	--
Penis	0.4	1.0	--	0.4	0.9	--	0.5	1.2	--
Other	0.1	0.2	--	^	^	--	^	^	--
Urinary System	40.7	62.5	24.0	43.7	67.5	24.8	33.6	48.7	23.1
Urinary Bladder (Incl. In Situ)	19.2	34.3	8.1	21.7	38.4	8.8	12.5	21.6	6.6
Kidney and Renal Pelvis	20.5	26.6	15.3	21.0	27.4	15.4	20.2	26.0	15.8
Ureter	0.7	1.0	0.4	0.8	1.2	0.4	0.3	^	^
Other	0.3	0.5	0.2	0.3	0.5	^	0.5	^	^
Eye and Orbit	0.7	0.7	0.6	0.8	0.9	0.8	0.2	^	^
Brain and Nervous System	5.7	6.5	4.9	6.4	7.4	5.6	4.0	4.4	3.7
Brain	5.3	6.2	4.5	6.0	7.0	5.1	3.8	4.3	3.4
Cranial Nerves and Other NS	0.3	0.3	0.4	0.4	0.4	0.5	0.2	^	^
Endocrine System	11.6	6.5	16.4	13.3	7.5	19.0	8.0	3.7	11.6
Thyroid	10.8	5.6	15.8	12.5	6.7	18.4	7.2	2.7	10.9
Thymus and Other Endocrine	0.8	0.9	0.6	0.7	0.9	0.6	0.8	1.0	0.7
Lymphoma	23.0	27.6	19.3	24.9	29.8	20.9	17.1	20.3	14.6
Hodgkin Lymphoma	3.0	3.3	2.7	3.0	3.4	2.7	2.8	3.2	2.5
Non-Hodgkin lymphoma	20.0	24.3	16.6	21.9	26.4	18.2	14.4	17.1	12.2
Myeloma	6.4	8.2	5.2	4.8	6.3	3.7	11.5	14.5	9.5
Leukemia	12.4	15.8	9.8	13.4	17.1	10.5	10.0	11.9	8.6
Lymphocytic Leukemia	5.3	7.0	4.0	6.2	7.9	4.8	3.5	4.8	2.5
Acute Lymphocytic Leukemia	1.4	1.6	1.2	1.7	1.8	1.6	0.9	1.2	0.7
Chronic Lymphocytic Leukemia	3.5	4.8	2.6	4.0	5.4	2.9	2.3	3.0	1.8
Other Lymphocytic Leukemia	0.4	0.7	0.2	0.5	0.8	0.3	^	^	^
Myeloid and Monocytic Leukemia	6.3	7.8	5.2	6.5	8.4	5.1	5.7	6.0	5.4
Acute Myeloid Leukemia	3.8	4.6	3.3	3.9	4.9	3.3	3.5	3.5	3.5
Acute Monocytic Leukemia	0.3	0.4	0.2	0.3	0.4	0.2	^	^	^
Chronic Myeloid Leukemia	1.9	2.5	1.4	2.0	2.7	1.4	1.7	2.0	1.6
Other Myeloid/Monocytic Leukemia	0.3	0.4	0.2	0.3	0.4	0.2	^	^	^
Other Leukemia	0.8	0.9	0.6	0.7	0.9	0.6	0.8	1.1	0.6
Other Acute Leukemia	0.3	0.4	0.3	0.3	0.3	0.2	0.4	^	^
Aleukemic, Subleukemic and NOS	0.5	0.6	0.4	0.5	0.6	0.4	0.4	^	^
Mesothelioma	1.4	2.4	0.6	1.5	2.7	0.6	1.0	1.7	0.5
Kaposi Sarcoma	0.5	0.9	^	0.5	0.8	^	0.6	1.1	^
Ill-Defined and Unknown Sites	11.4	13.7	9.5	10.9	13.2	9.0	12.8	15.4	10.7
<i>In Situ Cancers (not included above)</i>									
Breast In Situ	13.3	0.2	24.7	13.2	^	25.1	14.2	^	24.9

¹Rates per 100,000 person-years, age adjusted to the U.S. 2000 standard.

²Except for urinary bladder (in situ and invasive), only invasive cases are included.

^ Rates are not calculated if fewer than 16 cases were diagnosed during these five years.

-- Not applicable

Table C. Average Annual Cancer Incidence Rates,¹ 2007-2011: U.S., Louisiana, and Industrial Corridor²

Primary Site	White Males					White Females					Black Males					Black Females				
Invasive cancers ³	U.S. ⁴	LA		Ind. Corr.		U.S. ⁴	LA		Ind. Corr.		U.S. ⁴	LA		Ind. Corr.		U.S. ⁴	LA		Ind. Corr.	
All Sites Combined	532.1	578.1	↑	595.3	#	424.4	413.1	↓	397.6	*	600.9	652.1	↑	675.2		398.8	415.4	↑	418.6	
Oral Cavity and Pharynx	17.0	20.6	↑	20.3		6.4	6.5		6.6		14.7	17.7	↑	18.1		5.3	6.1		5.7	
Esophagus	8.0	9.1	↑	9.0		1.7	1.7		1.4		7.9	8.4		6.6		2.6	2.7		2.7	
Stomach	9.2	8.6		7.1		4.5	3.9	↓	2.8		15.3	19.0	↑	21.1		8.5	10.6	↑	9.6	
Colon	34.3	39.6	↑	36.5		27.5	29.6	↑	29.3		45.4	52.0	↑	49.4		36.4	39.9	↑	42.0	
Rectum	15.4	18.0	↑	15.9		9.7	10.6	↑	9.1		16.9	21.3	↑	17.9		11.1	12.9	↑	12.8	
Liver and Bile Duct	10.8	10.8		7.3	*	3.6	3.2		3.3		15.6	16.0		17.2		4.6	4.4		4.6	
Pancreas	14.0	14.4		15.0		10.7	11.3		10.1		17.2	16.0		15.2		14.2	14.2		17.8	
Larynx	5.9	8.6	↑	9.3		1.3	2.1	↑	1.8		9.0	12.2	↑	12.8		1.7	2.2		2.3	
Lung and Bronchus	72.4	92.3	↑	78.8	*	53.8	59.1	↑	52.7	*	93.0	113.8	↑	104.0		51.2	52.7		48.3	
Melanoma of the Skin	32.3	26.1	↓	35.2	#	20.0	15.6	↓	17.8		1.0	1.1		^		1.0	1.0		^	
Breast	1.2	1.2		^		128.0	120.3	↓	120.3		1.8	1.6		^		122.8	126.6		133.8	
Cervix	--	--		--		7.8	8.5	↑	7.8		--	--		--		9.4	12.2	↑	10.1	
Uterus	--	--		--		25.4	17.1	↓	15.0		--	--		--		23.2	19.4	↓	19.0	
Ovary	--	--		--		13.0	10.1	↓	10.5		--	--		--		9.8	9.6		9.2	
Prostate	139.8	151.5	↑	190.4	#	--	--		--		223.9	230.7	↑	261.2	#	--	--		--	
Testis	6.6	5.6	↓	6.2		--	--		--		1.4	1.5		^		--	--		--	
Urinary Bladder	39.4	38.4		42.5		9.5	8.8		10.2		21.3	21.6		20.8		6.9	6.6		8.0	
Kidney and Renal Pelvis	21.7	27.4	↑	26.0		11.0	15.4	↑	14.8		24.7	26.0		22.7		12.7	15.8	↑	15.6	
Brain & Other Nervous System	8.4	7.4	↓	7.6		6.0	5.6		5.5		4.7	4.4		4.1		3.6	3.7		3.5	
Thyroid	6.9	6.7		5.2		20.4	18.4	↓	14.5	*	3.3	2.7		2.9		11.3	10.9		8.8	
Hodgkin Lymphoma	3.3	3.4		3.3		2.6	2.7		2.9		3.1	3.2		3.1		2.3	2.5		2.3	
Non-Hodgkin Lymphoma	24.9	26.4	↑	23.3		17.2	18.2	↑	17.9		17.4	17.1		21.9	#	11.9	12.2		11.1	
Myeloma	7.2	6.3	↓	5.2		4.3	3.7	↓	3.2		14.8	14.5		15.2		10.5	9.5		11.9	
Leukemia	17.5	17.1		13.7	*	10.7	10.5		11.2		12.9	11.9		10.6		8.0	8.6		8.0	

¹Rates per 100,000 person-years, age adjusted to the U.S. 2000 standard

²The Industrial Corridor comprises Ascension, East Baton Rouge, Iberville, St. Charles, St. James, St. John the Baptist, and West Baton Rouge parishes.

³Except for urinary bladder (in situ and invasivw), only invasive cases are included.

⁴U.S. incidence rate estimates are from the Surveillance, Epidemiology and end Results (SEER) Program of the National Cancer Institute, 18 regions.

^ Rates are not calculated for cells smaller than 16 cases.

-- Not applicable

↑ or ↓ The Louisiana rate is significantly higher or lower (p < 0.05) than the U.S. rate.

* The regional rate is significantly lower (p < 0.05) than the Louisiana rate.

The regional rate is significantly higher (p < 0.05) than the Louisiana rate.

Table D. Cancer Incidence among AI/AN¹ and API², 2007-2011

Average Annual Rates³ per 100,000

Primary Site Invasive cancers ⁴	Males			Females		
	U.S.	Louisiana		U.S.	Louisiana	
All Sites Combined	324.0	244.2	↓	285.2	193.3	↓
Oral Cavity & Pharynx	10.7	8.6		4.5	^	
Esophagus	3.7	^		1.0	0.0	
Stomach	14.4	^		8.6	8.0	
Colon and Rectum	42.1	24.8	↓	31.4	21.4	↓
Liver and Intrahepatic Bile Duct	20.9	21.2		7.9	^	
Pancreas	10.6	^		8.7	10.8	
Larynx	2.4	^		0.3	0.0	
Lung and Bronchus	48.4	45.3		27.9	23.8	
Melanoma of the Skin	1.8	^		1.3	^	
Breast	0.7	0.0		89.7	50.4	↓
Cervix Uteri	--	--		6.3	^	
Corpus and Uterus, NOS	--	--		18.7	8.9	↓
Ovary	--	--		9.0	6.0	
Prostate	77.1	54.0	↓	--	--	
Testis	2.1	^		--	--	
Urinary Bladder	15.3	13.5		3.7	^	
Kidney and Renal Pelvis	12.1	^		5.9	^	
Brain and Other Nervous System	4.0	^		2.8	^	
Thyroid	5.4	^		17.3	8.3	↓
Hodgkin Lymphoma	1.3	^		1.1	^	
Non-Hodgkin Lymphoma	15.7	9.0	↓	10.9	^	
Myeloma	4.4	^		3.0	^	
Leukemia	9.1	^		6.0	^	

¹American Indians/Alaska Natives

²Asians and Pacific Islanders

³Rates are age adjusted to 2000 U.S. standard.

⁴Except for urinary bladder (in situ and invasive), only invasive cases are included.

^ Rates are not calculated for fewer than 16 cases during the five-year period.

U.S. rates from the SEER Program of the National Cancer Institute.

↑ or ↓: Louisiana rate is significantly higher or lower (p < 0.05) than the U.S. rate.

Table E1. Ten Most Commonly Diagnosed Cancers¹, 2007-2011: White Males
Average Annual Incidence Rates² by Louisiana Parish³

	All Sites	Prostate	Lung	Colon & Rectum	Bladder ²	Kidney	Non-Hodgkin Lymphoma	Melanoma of the Skin	Oral Cavity & Pharynx	Leukemia	Pancreas
Louisiana	578.1	151.5	92.3	57.6	38.4	27.4	26.4	26.1	20.6	17.1	14.4
Acadia	546.3	125.7	99.6	61.5	28.6	27.3	23.7	25.9	20.3	16.9	13.4
Allen	512.0	108.8	110.8	54.8	32.7	^	37.5	^	^	^	^
Ascension	595.5	181.9	95.5	53.7	44.6	30.1	15.2	26.6	21.1	^	10.9
Assumption	535.7	132.3	112.9	58.3	^	^	^	^	^	^	^
Avoyelles	594.7	138.5	127.2	73.5	44.7	22.9	20.8	^	22.1	^	20.5
Beauregard	517.8	122.6	98.4	58.4	40.6	^	20.8	^	^	^	^
Bienville	577.2	180.9	61.6	72.2	^	^	^	^	^	^	^
Bossier	608.8	172.9	99.6	50.5	36.9	28.7	26.6	27.6	21.3	21.5	15.3
Caddo	600.9	164.6	94.8	52.0	43.8	27.3	25.5	29.7	21.2	20.5	11.2
Calcasieu	605.6	166.4	94.7	49.3	37.0	30.9	30.3	27.4	22.7	22.4	11.8
Caldwell	597.0	102.4	95.7	77.2	^	^	^	^	^	^	^
Cameron	609.4	159.2	116.0	^	^	^	^	^	^	^	^
Catahoula	571.6	131.1	105.0	76.4	^	^	^	^	^	^	^
Claiborne	603.9	163.8	99.9	82.6	^	^	^	^	^	^	^
Concordia	533.6	128.6	92.1	81.3	^	^	^	^	^	^	^
De Soto	628.6	147.8	116.6	78.2	^	^	^	^	^	^	^
East Baton Rouge	593.2	203.5	67.9	51.4	42.9	25.4	23.9	40.6	18.3	13.8	13.5
East Carroll	442.5	^	^	^	0.0	^	^	^	^	^	^
East Feliciana	688.3	175.2	85.3	70.8	61.7	^	^	48.6	^	^	^
Evangeline	543.3	115.0	109.6	78.6	52.2	^	^	^	^	^	^
Franklin	601.7	115.1	132.2	70.7	36.7	^	^	^	^	^	^
Grant	533.3	108.4	141.4	55.8	^	^	^	^	^	^	^
Iberia	538.9	125.6	93.9	54.2	45.2	23.2	29.8	11.7	20.8	^	22.1
Iberville	719.6	219.3	99.3	76.9	49.8	31.0	^	33.3	^	^	^
Jackson	626.0	127.0	97.0	56.7	49.4	^	^	^	^	^	^
Jefferson	555.7	132.3	83.3	53.8	39.4	28.1	30.9	23.2	22.3	16.9	14.7
Jefferson Davis	578.9	145.1	112.9	66.9	29.1	26.0	^	^	^	^	^
Lafayette	549.6	155.2	84.5	54.9	34.9	25.6	22.1	21.3	19.3	16.1	14.0
Lafourche	547.2	145.8	84.8	59.9	34.8	31.5	26.3	14.2	20.8	13.4	13.7
La Salle	553.0	157.8	117.3	52.5	^	^	^	^	^	^	^
Lincoln	541.5	112.8	74.2	62.3	37.5	26.3	41.3	33.8	^	^	^

Table E1. Ten Most Commonly Diagnosed Cancers¹, 2007-2011: White Males (2)

	All Sites	Prostate	Lung	Colon & Rectum	Bladder ²	Kidney	Non-Hodgkin Lymphoma	Melanoma of the Skin	Oral Cavity & Pharynx	Leukemia	Pancreas
Livingston	615.9	155.7	115.7	60.2	37.1	31.6	28.4	28.0	18.5	12.5	16.0
Madison	501.6	104.8	^	^	^	^	^	^	^	^	^
Morehouse	548.0	153.7	93.1	39.2	^	^	^	^	^	^	^
Natchitoches	543.8	150.3	78.8	66.8	^	^	28.5	30.6	^	^	^
Orleans	485.7	130.3	56.2	45.5	35.6	19.1	26.5	27.8	20.6	11.8	11.9
Ouachita	578.1	146.4	103.8	53.7	30.3	28.0	31.2	33.5	24.3	15.5	15.3
Plaquemines	507.1	147.0	49.2	39.8	55.3	^	^	^	^	^	^
Pointe Coupee	606.1	174.8	68.6	90.2	38.8	38.5	^	^	^	^	^
Rapides	568.6	139.7	100.8	56.8	38.4	21.7	24.9	20.3	18.7	22.2	16.4
Red River	590.5	185.7	124.0	^	^	^	^	^	^	^	^
Richland	557.8	123.4	125.0	68.5	^	^	^	^	^	^	^
Sabine	642.1	170.5	101.4	71.0	35.5	27.5	^	^	^	^	^
St. Bernard	591.3	115.2	122.6	64.5	50.1	^	42.1	^	20.5	^	^
St. Charles	583.9	146.9	86.1	45.7	51.2	25.9	18.7	28.4	28.2	26.8	22.5
St. Helena	559.1	104.0	84.5	^	^	^	^	^	^	^	^
St. James	599.3	165.1	65.7	75.0	^	^	^	^	^	^	^
St. John the Baptist	524.5	123.0	104.3	52.7	27.5	^	30.0	^	^	^	^
St. Landry	643.4	163.6	88.7	81.0	51.9	45.7	20.0	22.3	16.4	12.7	18.9
St. Martin	585.2	166.0	83.6	78.2	38.6	32.3	19.1	21.9	23.3	18.5	^
St. Mary	575.3	145.2	91.3	70.6	28.3	28.5	30.1	^	21.6	19.9	^
St. Tammany	589.3	155.4	82.3	52.2	43.5	32.8	28.8	33.9	19.1	22.5	11.6
Tangipahoa	600.8	147.9	110.5	70.5	33.9	28.3	23.5	24.9	17.0	17.3	16.9
Tensas	480.3	^	^	^	^	^	^	^	^	^	^
Terrebonne	580.5	126.0	96.5	63.7	43.2	30.1	29.4	18.6	18.0	17.8	14.3
Union	547.1	126.3	104.4	71.2	39.7	^	^	^	^	^	^
Vermilion	632.7	189.2	101.3	69.3	28.5	26.3	23.7	21.3	19.1	21.1	16.3
Vernon	628.3	150.3	119.2	54.8	43.2	29.2	29.4	24.3	31.5	^	^
Washington	632.9	129.5	112.2	52.4	34.4	42.1	27.6	35.9	28.8	^	19.9
Webster	593.2	139.8	105.7	61.2	26.0	24.1	30.6	31.7	27.0	^	^
West Baton Rouge	602.2	202.7	106.2	^	^	^	^	^	^	^	^
West Carroll	541.0	102.7	133.1	62.5	^	^	^	^	^	^	^
West Feliciana	543.3	143.5	122.3	^	^	^	^	^	^	^	^
Winn	638.0	134.9	146.1	63.4	^	^	^	^	^	^	^

¹Except for urinary bladder (in situ and invasivw), only invasive cases are included.

²Rates per 100,000 person years, age adjusted to the U.S. 2000 standard.

³Cases are assigned to the parish of residence, not the parish where diagnosis or treatment took place.

^ Rates are not generated for cells with fewer than 16 cases in five years.

Table E2. Ten Most Commonly Diagnosed Cancers¹, 2007-2011: White Females
Average Annual Incidence Rates² by Louisiana Parish³

	All Sites	Breast	Lung	Colon & Rectum	Thyroid	Non-Hodgkin Lymphoma	Uterus	Melanoma of the Skin	Kidney	Pancreas	Leukemia
Louisiana	413.1	120.3	59.1	40.2	18.4	18.2	17.1	15.6	15.4	11.3	10.5
Acadia	426.7	106.1	64.1	51.8	18.4	16.1	19.1	13.8	15.4	11.9	^
Allen	393.2	96.7	45.9	45.6	^	^	^	^	^	^	^
Ascension	392.2	101.5	69.3	34.1	15.0	17.4	16.7	20.1	16.8	10.5	10.6
Assumption	349.8	118.9	51.4	44.2	^	^	^	^	^	^	^
Avoyelles	392.6	95.7	58.8	48.9	20.7	^	^	^	21.3	26.5	^
Beauregard	436.0	115.1	62.1	37.7	25.1	^	24.6	24.1	^	^	^
Bienville	345.1	80.9	68.8	^	^	^	^	^	^	^	^
Bossier	415.0	106.2	67.2	44.2	19.3	17.0	12.7	23.4	15.5	9.5	9.4
Caddo	398.2	110.6	56.6	33.1	19.9	18.2	18.1	16.3	10.6	13.0	14.7
Calcasieu	423.4	117.4	58.6	40.8	25.2	19.5	19.1	21.8	16.5	14.4	11.1
Caldwell	428.2	125.9	80.8	^	^	^	^	^	^	^	^
Cameron	359.2	104.5	^	^	^	^	^	^	^	^	^
Catahoula	398.7	106.9	63.5	69.5	^	^	^	^	^	^	^
Claiborne	353.9	101.2	44.0	51.2	^	^	^	^	^	^	^
Concordia	407.2	90.7	66.8	49.5	^	^	^	^	^	^	^
De Soto	487.8	167.1	72.3	42.0	^	29.6	^	^	^	^	^
East Baton Rouge	390.0	123.9	47.4	38.5	12.7	17.0	16.1	18.3	12.7	9.0	11.9
East Carroll	507.3	^	^	^	^	^	^	^	^	^	^
East Feliciana	456.0	176.4	60.5	46.9	^	^	^	^	^	^	^
Evangeline	397.2	109.1	51.2	44.7	^	23.4	^	^	^	^	^
Franklin	381.7	117.8	63.7	37.2	^	^	^	^	^	^	^
Grant	482.9	86.4	86.4	50.4	^	^	^	^	^	^	^
Iberia	450.5	136.0	73.3	51.7	22.6	13.5	21.1	^	20.9	14.1	^
Iberville	482.8	144.2	58.8	41.1	^	^	^	^	^	^	^
Jackson	493.2	96.1	84.0	56.4	^	^	41.9	^	^	^	^
Jefferson	423.5	126.3	60.6	39.8	18.1	18.0	18.3	13.9	15.5	9.9	11.2
Jefferson Davis	408.2	138.2	63.4	43.3	^	^	^	^	^	^	^
Lafayette	417.8	140.7	53.3	37.5	15.7	19.7	15.2	11.2	14.3	10.3	9.9
Lafourche	408.0	125.6	56.0	40.2	20.5	21.9	17.5	9.9	15.8	8.3	10.6
La Salle	409.3	102.5	65.2	60.1	^	^	^	^	^	^	^
Lincoln	381.4	133.0	53.9	31.4	^	^	^	^	^	^	^

Table E2. Ten Most Commonly Diagnosed Cancers¹, 2007-2011: White Females (2)

	All Sites	Breast	Lung	Colon & Rectum	Thyroid	Non-Hodgkin Lymphoma	Uterus	Melanoma of the Skin	Kidney	Pancreas	Leukemia
Livingston	414.3	110.1	56.3	48.9	17.6	17.4	14.4	19.9	18.7	11.0	7.3
Madison	360.9	101.5	^	^	^	^	^	^	^	^	^
Morehouse	392.8	110.7	58.3	32.4	^	^	^	^	^	^	^
Natchitoches	426.8	107.1	57.2	52.9	^	23.5	24.5	^	^	^	^
Orleans	389.7	132.9	44.9	36.1	12.9	20.3	21.0	15.6	11.4	10.2	8.9
Ouachita	421.9	123.8	63.5	33.7	27.6	12.6	17.5	28.7	10.3	10.4	9.8
Plaquemines	346.9	118.2	57.5	34.4	^	^	^	^	^	^	^
Pointe Coupee	429.4	136.7	66.8	30.3	^	^	^	^	^	^	^
Rapides	379.7	104.1	49.4	32.4	16.5	15.5	17.0	13.5	16.8	11.2	13.8
Red River	336.1	91.4	^	^	^	^	^	^	^	^	^
Richland	396.4	93.3	49.0	50.2	^	^	^	^	^	^	^
Sabine	438.0	120.3	61.1	49.8	^	29.7	^	^	^	^	^
St. Bernard	481.6	139.7	86.0	53.0	^	28.0	25.6	^	^	^	^
St. Charles	399.3	114.9	63.1	30.2	16.7	21.2	^	16.6	^	^	^
St. Helena	387.2	^	^	^	^	^	^	^	^	^	^
St. James	373.2	113.2	44.8	53.1	^	^	^	^	^	^	^
St. John the Baptist	396.9	112.6	43.9	44.4	^	^	^	^	^	^	^
St. Landry	435.7	125.6	71.7	37.9	30.0	15.3	17.8	^	19.8	16.4	^
St. Martin	442.4	126.3	66.1	54.7	18.4	16.6	19.4	^	17.4	^	^
St. Mary	415.0	114.7	63.1	38.0	24.0	19.0	^	^	^	^	^
St. Tammany	434.2	132.8	59.6	37.3	22.1	19.6	14.3	18.9	15.2	13.6	11.8
Tangipahoa	405.6	115.4	55.0	39.6	16.2	16.1	17.8	13.2	18.1	10.4	12.0
Tensas	294.5	^	^	^	^	^	^	^	^	^	^
Terrebonne	400.7	112.4	59.8	37.0	10.8	18.4	17.4	11.9	15.6	15.6	^
Union	424.7	116.0	68.0	47.2	^	^	^	^	^	^	^
Vermilion	430.6	130.0	62.2	50.3	17.3	15.0	16.1	^	22.9	^	10.5
Vernon	375.2	85.4	82.1	36.5	21.2	^	^	^	17.3	^	^
Washington	482.2	135.7	76.0	42.8	22.6	24.1	19.6	19.0	21.4	^	^
Webster	432.1	107.9	77.7	33.3	^	26.7	26.9	^	^	^	^
West Baton Rouge	442.4	129.0	59.2	41.8	^	^	^	^	^	^	^
West Carroll	410.8	108.5	65.3	44.8	^	^	^	^	^	^	^
West Feliciana	383.9	158.4	^	^	^	^	^	^	^	^	^
Winn	395.7	86.4	82.4	46.9	^	^	^	^	^	^	^

¹only invasive cases are included.

²Rates per 100,000 person years, age adjusted to the U.S. 2000 standard.

³Cases are assigned to the parish of residence, not the parish where diagnosis or treatment took place.

^ Rates are not generated for cells with fewer than 16 cases in five years.

Table E3. Ten Most Commonly Diagnosed Cancers¹, 2007-2011: Black Males
Average Annual Incidence Rates² by Louisiana Parish³

	All Sites	Prostate	Lung	Colon & Rectum	Kidney	Bladder ²	Stomach	Oral Cavity & Pharynx	Non-Hodgkin Lymphoma	Liver & Bile duct	Pancreas
Louisiana	652.1	230.7	113.8	73.3	26.0	21.6	19.0	17.7	17.1	16.0	16.0
Acadia	646.5	172.7	108.0	85.4	^	^	^	^	^	^	^
Allen	454.7	132.4	^	^	^	^	^	^	^	^	^
Ascension	690.0	256.6	116.4	80.2	^	^	^	^	^	^	^
Assumption	619.0	181.6	114.5	^	^	^	^	^	^	^	^
Avoyelles	752.4	213.1	170.0	67.8	^	^	^	^	^	^	^
Beauregard	516.1	183.0	^	^	^	^	^	^	^	^	^
Bienville	656.3	286.6	168.7	^	^	^	^	^	^	^	^
Bossier	647.9	255.5	96.2	58.0	^	^	^	^	^	^	^
Caddo	676.2	249.8	115.1	72.8	32.4	12.2	18.0	19.3	16.7	15.0	19.3
Calcasieu	647.4	232.2	115.8	91.5	29.4	^	^	19.9	^	^	^
Caldwell	472.9	^	^	^	^	^	^	^	^	^	^
Cameron	^	^	^	^	^	^	^	^	^	^	^
Catahoula	573.7	^	^	^	^	^	^	^	^	^	^
Claiborne	691.8	291.5	111.3	^	^	^	^	^	^	^	^
Concordia	801.4	316.0	117.8	110.3	^	^	^	^	^	^	^
De Soto	665.4	278.0	141.8	^	^	^	^	^	^	^	^
East Baton Rouge	678.1	270.8	103.8	65.7	22.9	20.8	19.1	17.0	24.8	18.1	14.5
East Carroll	709.0	^	^	^	^	^	^	^	^	^	^
East Feliciana	726.4	261.0	129.0	118.2	^	^	^	^	^	^	^
Evangeline	601.1	148.0	135.5	^	^	^	^	^	^	^	^
Franklin	709.5	188.8	157.0	^	^	^	^	^	^	^	^
Grant	748.0	^	^	^	^	^	^	^	^	^	^
Iberia	815.7	246.7	137.8	121.9	^	^	^	^	^	^	^
Iberville	721.6	256.8	118.9	67.2	^	^	^	^	^	^	^
Jackson	669.4	232.2	150.8	^	^	^	^	^	^	^	^
Jefferson	640.5	232.1	103.5	76.0	29.6	25.0	15.9	16.4	15.2	16.0	13.2
Jefferson Davis	532.2	146.9	^	^	^	^	^	^	^	^	^
Lafayette	636.1	165.7	131.6	100.9	24.8	29.0	^	16.5	^	23.2	^
Lafourche	593.8	171.8	103.2	84.1	^	^	^	^	^	^	^
La Salle	555.7	^	^	^	^	^	^	^	^	^	^
Lincoln	575.1	182.3	103.3	82.6	^	^	^	^	^	^	^

Table E3. Ten Most Commonly Diagnosed Cancers¹, 2007-2011: Black Males (2)

	All Sites	Prostate	Lung	Colon & Rectum	Kidney	Bladder ²	Stomach	Oral Cavity & Pharynx	Non-Hodgkin Lymphoma	Liver & Bile duct	Pancreas
Livingston	619.6	262.4	^	^	^	^	^	^	^	^	^
Madison	566.2	207.0	^	^	^	^	^	^	^	^	^
Morehouse	565.7	262.6	86.4	^	^	^	^	^	^	^	^
Natchitoches	607.6	160.6	162.1	69.0	^	^	^	^	^	^	^
Orleans	640.9	201.2	120.1	68.7	27.8	29.1	17.0	16.3	21.4	24.1	12.0
Ouachita	614.2	219.1	102.6	73.0	25.4	^	^	17.2	^	^	^
Plaquemines	678.0	^	^	^	^	^	^	^	^	^	^
Pointe Coupee	658.5	289.9	^	94.5	^	^	^	^	^	^	^
Rapides	667.3	277.2	107.9	46.1	21.6	24.9	^	^	^	^	^
Red River	517.7	^	^	^	^	^	^	^	^	^	^
Richland	512.0	169.6	^	^	^	^	^	^	^	^	^
Sabine	633.9	269.1	^	^	^	^	^	^	^	^	^
St. Bernard	642.3	229.4	^	^	^	^	^	^	^	^	^
St. Charles	586.0	233.0	96.7	70.4	^	^	^	^	^	^	^
St. Helena	600.6	255.6	^	^	^	^	^	^	^	^	^
St. James	813.9	244.7	132.7	90.1	^	^	^	^	^	^	^
St. John the Baptist	627.4	221.3	90.6	61.6	^	^	^	^	^	^	^
St. Landry	679.4	218.1	128.6	64.5	25.1	41.1	^	24.7	^	^	^
St. Martin	678.2	219.9	107.6	79.8	^	^	^	^	^	^	^
St. Mary	594.6	215.7	105.2	74.3	^	^	^	^	^	^	^
St. Tammany	579.5	201.8	108.7	48.3	^	^	^	^	^	^	^
Tangipahoa	684.0	278.5	126.8	68.6	^	^	^	^	^	^	^
Tensas	701.7	^	^	^	^	^	^	^	^	^	^
Terrebonne	678.2	233.9	105.1	97.5	^	^	^	^	^	^	^
Union	509.2	139.7	^	^	^	^	^	^	^	^	^
Vermilion	838.8	246.8	209.2	^	^	^	^	^	^	^	^
Vernon	647.1	306.4	^	^	^	^	^	^	^	^	^
Washington	631.8	268.5	109.7	71.9	^	^	^	^	^	^	^
Webster	728.1	242.6	170.4	67.0	^	^	^	^	^	^	^
West Baton Rouge	625.9	297.3	^	^	^	^	^	^	^	^	^
West Carroll	682.9	^	^	^	^	^	^	^	^	^	^
West Feliciana	564.9	197.3	90.5	^	^	^	^	^	^	^	^
Winn	798.2	314.6	^	^	^	^	^	^	^	^	^

¹Except for urinary bladder (in situ and invasive), only invasive cases are included.

²Rates per 100,000 person years, age adjusted to the U.S. 2000 standard.

³Cases are assigned to the parish of residence, not the parish where diagnosis or treatment took place.

^ Rates are not generated for cells with fewer than 16 cases in five years.

Table E4. Ten Most Commonly Diagnosed Cancers¹, 2007-2011: Black Females
Average Annual Incidence Rates² by Louisiana Parish³

	All Sites	Breast	Colon & Rectum	Lung	Uterus	Kidney	Pancreas	Cervix	Non-Hodgkin Lymphoma	Stomach	Ovary
Louisiana	415.4	126.6	52.8	52.7	19.4	15.8	14.2	12.2	12.2	10.6	9.6
Acadia	433.0	134.8	64.2	64.4	^	^	^	^	^	^	^
Allen	276.2	^	^	^	^	^	^	^	^	^	^
Ascension	429.0	139.0	70.9	54.2	^	^	^	^	^	^	^
Assumption	445.2	163.3	^	^	^	^	^	^	^	^	^
Avoyelles	424.3	113.4	52.6	67.5	^	^	^	^	^	^	^
Beauregard	487.0	158.4	^	^	^	^	^	^	^	^	^
Bienville	348.0	97.9	^	^	^	^	^	^	^	^	^
Bossier	367.6	103.8	42.4	36.3	^	^	^	^	^	^	^
Caddo	423.9	124.3	54.1	39.2	29.2	14.9	14.3	16.9	10.5	13.6	10.5
Calcasieu	430.1	119.1	65.4	60.8	14.8	17.2	16.6	16.2	^	^	^
Caldwell	450.6	^	^	^	^	^	^	^	^	^	^
Cameron	^	^	^	^	^	^	^	^	^	^	^
Catahoula	373.0	^	^	^	^	^	^	^	^	^	^
Claiborne	309.6	90.1	^	^	^	^	^	^	^	^	^
Concordia	382.9	101.5	^	^	^	^	^	^	^	^	^
De Soto	335.3	120.1	53.1	^	^	^	^	^	^	^	^
East Baton Rouge	421.7	134.9	53.3	46.8	20.7	15.4	17.0	10.9	12.2	8.3	11.9
East Carroll	400.8	^	^	^	^	^	^	^	^	^	^
East Feliciana	397.9	150.5	^	^	^	^	^	^	^	^	^
Evangeline	349.1	99.3	^	^	^	^	^	^	^	^	^
Franklin	392.9	136.8	^	^	^	^	^	^	^	^	^
Grant	397.0	^	^	^	^	^	^	^	^	^	^
Iberia	475.4	143.3	65.1	64.8	^	^	^	^	^	^	^
Iberville	486.0	130.4	78.1	58.6	^	^	^	^	^	^	^
Jackson	474.2	121.9	^	^	^	^	^	^	^	^	^
Jefferson	429.1	139.4	48.8	62.1	16.6	12.4	12.9	10.4	11.0	11.5	8.6
Jefferson Davis	573.7	132.1	^	121.1	^	^	^	^	^	^	^
Lafayette	423.0	102.4	50.9	69.1	21.7	18.3	^	^	18.0	17.6	^
Lafourche	395.4	117.4	^	70.1	^	^	^	^	^	^	^
La Salle	539.6	^	^	^	^	^	^	^	^	^	^
Lincoln	369.2	117.1	45.4	44.3	^	^	^	^	^	^	^

Table E4. Ten Most Commonly Diagnosed Cancers¹, 2007-2011: Black Females (2)

	All Sites	Breast	Colon & Rectum	Lung	Uterus	Kidney	Pancreas	Cervix	Non-Hodgkin Lymphoma	Stomach	Ovary
Livingston	458.1	^	^	^	^	^	^	^	^	^	^
Madison	336.9	^	^	^	^	^	^	^	^	^	^
Morehouse	435.1	105.7	82.1	57.2	^	^	^	^	^	^	^
Natchitoches	394.8	126.5	44.8	^	^	^	^	^	^	^	^
Orleans	413.6	134.3	46.7	54.6	19.5	13.7	9.2	13.5	15.6	9.7	10.4
Ouachita	397.8	131.5	60.3	48.1	23.8	^	14.1	^	^	^	^
Plaquemines	581.0	188.5	^	^	^	^	^	^	^	^	^
Pointe Coupee	473.8	179.9	^	^	^	^	^	^	^	^	^
Rapides	427.3	123.6	58.7	54.6	16.5	21.0	18.5	^	15.5	^	^
Red River	252.1	^	^	^	^	^	^	^	^	^	^
Richland	401.3	132.9	^	^	^	^	^	^	^	^	^
Sabine	481.3	^	^	^	^	^	^	^	^	^	^
St. Bernard	510.4	160.1	^	^	^	^	^	^	^	^	^
St. Charles	410.7	151.4	^	65.1	^	^	^	^	^	^	^
St. Helena	378.5	126.2	^	^	^	^	^	^	^	^	^
St. James	355.0	119.5	^	^	^	^	^	^	^	^	^
St. John the Baptist	392.7	125.9	44.9	56.5	^	^	^	^	^	^	^
St. Landry	427.0	127.1	60.4	60.8	^	22.2	18.4	^	^	^	^
St. Martin	394.2	109.3	62.5	57.2	^	^	^	^	^	^	^
St. Mary	436.7	100.0	62.5	50.2	^	^	^	^	^	^	^
St. Tammany	461.6	154.4	45.8	56.7	^	^	^	^	^	^	^
Tangipahoa	430.3	111.8	53.1	70.8	^	20.9	^	^	^	^	^
Tensas	299.0	^	^	^	^	^	^	^	^	^	^
Terrebonne	442.9	120.2	45.2	56.2	^	^	^	^	^	^	^
Union	348.2	99.0	^	^	^	^	^	^	^	^	^
Vermilion	466.1	143.1	^	^	^	^	^	^	^	^	^
Vernon	486.6	^	^	^	^	^	^	^	^	^	^
Washington	419.2	107.3	59.5	56.9	^	^	^	^	^	^	^
Webster	329.9	94.4	48.1	43.9	^	^	^	^	^	^	^
West Baton Rouge	391.1	114.4	^	^	^	^	^	^	^	^	^
West Carroll	502.8	^	^	^	^	^	^	^	^	^	^
West Feliciana	266.8	^	^	^	^	^	^	^	^	^	^
Winn	351.9	^	^	^	^	^	^	^	^	^	^

¹only invasive cases are included.

²Rates per 100,000 person years, age adjusted to the U.S. 2000 standard.

³Cases are assigned to the parish of residence, not the parish where diagnosis or treatment took place.

^ Rates are not generated for cells with fewer than 16 cases in five years.

Table F1. Ten Most Commonly Diagnosed Cancers, 2007-2011: White Males
Average Annual Incidence Rates¹ by Louisiana Tumor Registry Region²

Primary Site Invasive Cancers ⁴	U.S. ³	Louisiana	New Orleans Region	Baton Rouge Region	Southeast Region	Acadiana Region	Southwest Region	Central Region	Northwest Region	Northeast Region
All Sites Combined	532.1	578.1 ↑	541.0 *	601.8 #	577.5	573.2	582.2	578.7	601.9 #	566.1
Prostate	139.9	151.5 ↑	131.3 *	179.5 #	144.9	150.7	152.7	138.3 *	163.6 #	132.0 *
Lung and Bronchus	72.4	92.3 ↑	78.5 *	89.8	87.0	91.8	99.2	113.5 #	96.7	102.9 #
Colon and Rectum	49.6	57.6 ↑	52.2 *	58.1	55.1	65.2 #	53.6	61.6	58.2	59.2
Urinary bladder	39.4	38.4	38.9	40.7	41.2	37.8	36.7	37.3	37.6	31.9 *
Kidney and Renal pelvis	21.7	27.4 ↑	25.5	27.8	31.1 #	28.3	26.9	22.8 *	27.2	25.8
Non-Hodgkin lymphoma	24.9	26.4 ↑	30.6 #	23.8	27.5	23.4	28.1	24.2	26.5	28.7
Melanoma of the skin	32.3	26.1 ↓	24.1	33.0 #	26.7	19.5 *	23.0	20.7 *	28.2	28.7
Oral cavity and Pharynx	17.0	20.6 ↑	21.9	18.3	21.0	19.5	20.8	21.3	22.0	22.1
Leukemia	17.5	17.1	15.4	13.1 *	19.1	16.1	20.2	18.2	20.4 #	19.1
Pancreas	14.0	14.4	13.7	14.2	14.4	15.7	11.4	16.4	13.5	15.7

¹Rates per 100,000 person-years, age-adjusted to the U.S. 2000 standard. See "Calculating 2005 Rates" in the Introduction.

²See Introduction for a list of parishes in LTR regions.

³U.S. incidence rate estimates are from the Surveillance, Epidemiology and end Results (SEER) Program of the National Cancer Institute, 18 regions. For a list of the 18 regions, see: <http://seer.cancer.gov/registries/list.html>.

⁴Except for urinary bladder (in situ and invasivw), only invasive cases are included.

↑ or ↓ The Louisiana rate is significantly higher or lower ($p < 0.05$) than the U.S. rate.

* The regional rate is significantly lower ($p < 0.05$) than the Louisiana rate.

The regional rate is significantly higher ($p < 0.05$) than the Louisiana rate.

Table F2. Ten Most Commonly Diagnosed Cancers, 2007-2011: White Females
Average Annual Incidence Rates¹ by Louisiana Tumor Registry Region²

Primary Site Invasive Cancers	U.S. ³	Louisiana	New Orleans Region	Baton Rouge Region	Southeast Region	Acadiana Region	Southwest Region	Central Region	Northwest Region	Northeast Region
All Sites Combined	424.4	413.1 ↓	417.6	402.3 *	418.7	425.6 *	418.6	394.0 *	410.5	411.8
Breast	128.0	120.3 ↓	127.9 #	119.9	125.3	128.3 #	117.3	97.3 *	111.3 *	118.9
Lung and Bronchus	53.8	59.1 ↑	58.5	53.9 *	59.2	61.3	57.7	62.3	61.6	62.5
Colon and Rectum	37.3	40.2 ↑	39.4	40.5	38.3	43.8	41.1	41.6	39.5	37.4
Thyroid	20.4	18.4 ↓	16.7	15.7 *	18.3	19.4	23.8 #	18.7	18.8	22.0
Non-Hodgkin lymphoma	17.2	18.2 ↑	19.1	17.6	19.9	17.6	18.2	16.1	19.7	15.3
Uterus	25.4	17.1 ↓	19.3	15.3	15.6	16.7	19.5	16.3	17.5	18.9
Melanoma of the skin	20.0	15.6 ↓	14.1	17.4	15.0	10.7 *	21.1 #	13.2	17.4	19.8 #
Kidney	11.0	15.4 ↑	14.5	16.0	15.8	17.1	15.9	15.8	13.1	14.7
Pancreas	10.7	11.3	10.3	9.4 *	12.7	12.1	13.3	12.7	10.6	11.4
Leukemia	10.7	10.5	10.5	10.6	10.8	8.8	10.7	11.6	12.4	9.5

¹Rates per 100,000 person-years, age-adjusted to the U.S. 2000 standard. See "Calculating 2005 Rates" in the Introduction.

²See Introduction for a list of parishes in LTR regions.

³U.S. incidence rate estimates are from the Surveillance, Epidemiology and end Results (SEER) Program of the National Cancer Institute, 18 regions. For a list of the 18 regions, see: <http://seer.cancer.gov/registries/list.html>.

↑ or ↓ The Louisiana rate is significantly higher or lower (p < 0.05) than the U.S. rate.

* The regional rate is significantly lower (p < 0.05) than the Louisiana rate.

The regional rate is significantly higher (p < 0.05) than the Louisiana rate.

Table F3. Ten Most Commonly Diagnosed Cancers, 2007-2011: Black Males
Average Annual Incidence Rates¹ by Louisiana Tumor Registry Region²

Primary Site Invasive Cancers ⁴	U.S. ³	Louisiana	New Orleans Region	Baton Rouge Region	Southeast Region	Acadiana Region	Southwest Region	Central Region	Northwest Region	Northeast Region
All Sites Combined	600.9	652.1 ↑	639.7	670.3	634.5	674.7	604.8 *	697.4	666.6 #	598.1 *
Prostate	223.9	230.7 ↑	210.8 *	264.9 #	218.2	202.6 *	211.1	273.0 #	245.6	206.2 *
Lung and Bronchus	93.0	113.8 ↑	114.9	105.6	105.5	126.9	108.5	114.5	124.2	106.0
Colon and Rectum	62.3	73.3 ↑	70.7	68.1	73.2	87.1 #	77.8	64.4	70.9	78.7
Kidney and Renal pelvis	24.7	26.0	28.0	22.3	26.5	28.3	28.9	18.7	27.7	27.3
Urinary bladder	21.3	21.6	27.9 #	18.8	20.8	30.3 #	18.0	27.0	15.9 *	11.0 *
Stomach	15.3	19.0 ↑	17.1	19.7	25.5	21.9	16.3	15.9	19.6	15.4
Oral cavity and Pharynx	14.7	17.7 ↑	16.0	18.8	14.9	19.8	16.5	19.3	19.7	15.0
Non-Hodgkin lymphoma	17.4	17.1	19.1	20.6	21.4	13.1	11.1	18.0	14.1	13.8
Liver and Bile Duct	15.6	16.0	21.4 #	15.7	19.2	15.4	11.4	13.6	13.1	9.6 *
Pancreas	17.2	16.0	12.8	14.8	17.1	20.1	14.8	17.8	16.5	18.7

¹Rates per 100,000 person-years, age-adjusted to the U.S. 2000 standard. See "Calculating 2005 Rates" in the Introduction.

²See Introduction for a list of parishes in LTR regions.

³U.S. incidence rate estimates are from the Surveillance, Epidemiology and end Results (SEER) Program of the National Cancer Institute, 18 regions. For a list of the

⁴Except for urinary bladder (in situ and invasive), only invasive cases are included.

↑ or ↓ The Louisiana rate is significantly higher or lower ($p < 0.05$) than the U.S. rate.

* The regional rate is significantly lower ($p < 0.05$) than the Louisiana rate.

The regional rate is significantly higher ($p < 0.05$) than the Louisiana rate.

Table F4. Ten Most Commonly Diagnosed Cancers, 2007-2011: Black Females
Average Annual Incidence Rates¹ by Louisiana Tumor Registry Region²

Primary Site Invasive Cancers	U.S. ³	Louisiana	New Orleans Region	Baton Rouge Region	Southeast Region	Acadiana Region	Southwest Region	Central Region	Northwest Region	Northeast Region
All Sites Combined	398.8	415.4 ↑	419.8	422.9	424.1	426.3	436.2	414.8	393.4 *	393.6
Breast	122.8	126.6	137.5 #	132.5	133.2	117.2	120.0	114.6	117.2	118.7
Colon and Rectum	47.5	52.8 ↑	47.1	56.0	46.6	59.7	63.2	53.0	50.4	54.8
Lung and Bronchus	51.2	52.7	56.6	48.4	56.6	61.6 #	67.5 #	57.9	40.3	49.5 *
Uterus	23.2	19.4 ↓	18.7	21.0	14.4	17.6	14.7	15.4	24.4 #	20.9
Kidney	12.7	15.8 ↑	13.4	16.5	18.1	21.3 #	17.7	17.0	14.1	11.9
Pancreas	14.2	14.2	10.6 *	17.6 #	17.6	14.0	15.7	16.5	12.0	14.0
Cervix	9.4	12.2 ↑	12.1	11.3	9.3	9.8	16.4	10.8	15.7	13.1
Non-Hodgkin lymphoma	11.9	12.2	14.1	11.1	12.6	12.1	11.5	17.3	9.6	10.3
Stomach	8.5	10.6 ↑	10.3	8.4	14.5	11.9	^	13	12.1	6.9
Ovary	9.8	9.6	9.6	10.7	5.7 *	10.1	11.8	8.5	10.0	8.7

¹Rates per 100,000 person-years, age-adjusted to the U.S. 2000 standard. See "Calculating 2005 Rates" in the Introduction.

²See Introduction for a list of parishes in LTR regions.

³U.S. incidence rate estimates are from the Surveillance, Epidemiology and end Results (SEER) Program of the National Cancer Institute, 18 regions. For a list of the 18
 ↑ or ↓ The Louisiana rate is significantly higher or lower (p < 0.05) than the U.S. rate.

* The regional rate is significantly lower (p < 0.05) than the Louisiana rate.

The regional rate is significantly higher (p < 0.05) than the Louisiana rate.

Table G1. Ten Most Commonly Diagnosed Cancers, 2007-2011: White Males
Average Annual Incidence Rates¹ by Louisiana Office of Public Health Regions²

Primary Site Invasive Cancers ⁴	U.S. ³	Louisiana	New Orleans Region	Baton Rouge Region	Southeast Region	Acadiana Region	Southwest Region	Central Region	Northwest Region	Northeast Region	North Lake Region
All Sites Combined	532.1	578.1 ↑	540.2 *	602.3 #	564.2	573.2	582.2	578.7	601.9 #	566.1	599.9 #
Prostate	139.9	151.5 ↑	131.7 *	196.3 #	138.7 *	151.2	152.7	138.3 *	163.6 #	132.0 *	151.3
Lung and Bronchus	72.4	92.3 ↑	77.5 *	77.7 *	91.5	91.8	99.2	113.5 #	96.7	102.9 #	97.5
Colon and Rectum	49.6	57.6 ↑	51.9 *	54.6	60.8	64.6 #	53.6	61.6	58.2	59.2	58.0
Urinary bladder	39.4	38.4	39.6	43.3 #	37.7	38.6	36.7	37.3	37.6	31.9 *	38.9
Kidney and Renal pelvis	21.7	27.4 ↑	25.7	26.8	28.7	28.4	26.9	22.8 *	27.2	25.8	32.0 #
Non-Hodgkin lymphoma	24.9	26.4 ↑	30.3 #	22.9	26.8	22.8 *	28.1	24.2	26.5	28.7	27.5
Melanoma of the skin	32.3	26.1 ↓	24.0 *	36.7 #	18.4 *	20.1	23.0	20.7 *	28.2	28.7	31.0
Oral cavity and Pharynx	17.0	20.6 ↑	21.9	18.9	20.6	19.3	20.8	21.3	22.0	22.1	19.3
Leukemia	17.5	17.1	15.3	12.5 *	17.4	15.7	20.2	18.2	20.4 #	19.1	18.4
Pancreas	14.0	14.4	13.6	13.3	15.9	15.7	11.4	16.4	13.5	15.7	14.3

¹Rates per 100,000 person-years, age-adjusted to the U.S. 2000 standard.

²Parishes for each OPH region listed in Appendix A

³U.S. incidence rate estimates are from the Surveillance, Epidemiology and end Results (SEER) Program of the National Cancer Institute, 18 regions. For a list of the 18 regions, see: <http://seer.cancer.gov/registries/list.html>.

⁴Except for urinary bladder (in situ and invasivw), only invasive cases are included.

↑ or ↓ The state rate is significantly higher or lower ($p < 0.05$) than the U.S. rate.

* The regional rate is significantly lower ($p < 0.05$) than the Louisiana rate.

The regional rate is significantly higher ($p < 0.05$) than the Louisiana rate.

Table G2. Ten Most Commonly Diagnosed Cancers, 2007-2011: White Females
Average Annual Incidence Rates¹ by Louisiana Office of Public Health Regions²

Primary Site Invasive Cancers	U.S. ³	Louisiana	New Orleans Region	Baton Rouge Region	Southeast Region	Acadiana Region	Southwest Region	Central Region	Northwest Region	Northeast Region	North Lake Region
All Sites Combined	424.4	413.1 ↓	415.3	400.9	399.5	426.8 #	418.6	394.0 *	410.5	411.8	427.0 #
Breast	128.0	120.3 ↓	127.7 #	124.1	117.4	129.5 #	117.3	97.3 *	111.3 *	118.9	123.5
Lung and Bronchus	53.8	59.1 ↑	58.4	53.0 *	57.1	61.2	57.7	62.3	61.6	62.5	59.4
Colon and Rectum	37.3	40.2 ↑	39.3	38.0	38.8	44.4 #	41.1	41.6	39.5	37.4	41.2
Thyroid	20.4	18.4 ↓	16.5	15.2 *	15.9	19.0	23.8 #	18.7	18.8	22.0	19.7
Non-Hodgkin lymphoma	17.2	18.2 ↑	18.9	17.6	20.5	17.5	18.2	16.1	19.7	15.3	18.7
Uterus	25.4	17.1 ↓	19.2	15.2	15.3	16.9	19.5	16.3	17.5	18.9	15.6
Melanoma of the skin	20.0	15.6 ↓	13.8	18.2	11.8 *	10.5 *	21.1 #	13.2	17.4	19.8 #	18.1
Kidney	11.0	15.4 ↑	14.4	15.1	15.1	17.4	15.9	15.8	13.1	14.7	17.1
Pancreas	10.7	11.3	10.3	9.2 *	11.7	12.1	13.3	12.7	10.6	11.4	12.1
Leukemia	10.7	10.5	10.6	11.6	9.0	8.8	10.7	11.6	12.4	9.5	10.8

¹Rates per 100,000 person-years, age-adjusted to the U.S. 2000 standard.

²Parishes for each OPH region listed in Appendix A

³U.S. incidence rate estimates are from the Surveillance, Epidemiology and end Results (SEER) Program of the National Cancer Institute, 18 regions. For a list of the 18 regions, see: <http://seer.cancer.gov/registries/list.html>.

↑ or ↓ The state rate is significantly higher or lower (p < 0.05) than the U.S. rate.

* The regional rate is significantly lower (p < 0.05) than the Louisiana rate.

The regional rate is significantly higher (p < 0.05) than the Louisiana rate.

Table G3. Ten Most Commonly Diagnosed Cancers, 2007-2011: Black Males
Average Annual Incidence Rates¹ by Louisiana Office of Public Health Regions²

Primary Site Invasive Cancers ⁴	U.S. ³	Louisiana	New Orleans Region	Baton Rouge Region	Southeast Region	Acadiana Region	Southwest Region	Central Region	Northwest Region	Northeast Region	North Lake Region
All Sites Combined	600.9	652.1 ↑	640.4	674.1	639.8	684.5	604.8 *	697.4	666.6	598.1 *	631.1
Prostate	223.9	230.7 ↑	209.8 *	266.7 #	215.6	200.5 *	211.1	273.0 #	245.6	206.2 *	249.7
Lung and Bronchus	93.0	113.8 ↑	114.9	103.5	104.6	129.7 #	108.5	114.5	124.2	106.0	112.0
Colon and Rectum	62.3	73.3 ↑	71.4	68.2	77.2	88.5 #	77.8	64.4	70.9	78.7	63.6
Kidney and Renal pelvis	24.7	26.0	28.8	22.8	25.7	27.6	28.9	18.7	27.7	27.3	22.2
Urinary bladder	21.3	21.6	28.0 #	19.4	22.3	31.0 #	18.0	27.0	15.9 *	11.0 *	16.6
Stomach	15.3	19.0 ↑	17.9	19.1	24.6	22.5	16.3	15.9	19.6	15.4	20.0
Oral cavity and Pharynx	14.7	17.7 ↑	16.1	18.2	16.3	21.6	16.5	19.3	19.7	15.0	15.3
Non-Hodgkin lymphoma	17.4	17.1	18.9	21.5	19.7	13.7	11.1	18.0	14.1	13.8	18.2
Liver and Bile Duct	15.6	16.0	21.2 #	16.6	17.2	17.1	11.4	13.6	13.1	9.6 *	13.9
Pancreas	17.2	16.0	13.0	14.7	16.7	20.3	14.8	17.8	16.5	18.7	17.0

¹Rates per 100,000 person-years, age-adjusted to the U.S. 2000 standard.

²Parishes for each OPH region listed in Appendix A

³U.S. incidence rate estimates are from the Surveillance, Epidemiology and end Results (SEER) Program of the National Cancer Institute, 18 regions. For a list of the 18 regions, see: <http://seer.cancer.gov/registries/list.html>.

⁴Except for urinary bladder (in situ and invasivw), only invasive cases are included.

↑ or ↓ The state rate is significantly higher or lower (p < 0.05) than the U.S. rate.

* The regional rate is significantly lower (p < 0.05) than the Louisiana rate.

The regional rate is significantly higher (p < 0.05) than the Louisiana rate.

Table G4. Ten Most Commonly Diagnosed Cancers, 2007-2011: Black Females
Average Annual Incidence Rates¹ by Louisiana Office of Public Health Regions²

Primary Site Invasive Cancers	U.S. ³	Louisiana	New Orleans Region	Baton Rouge Region	Southeast Region	Acadiana Region	Southwest Region	Central Region	Northwest Region	Northeast Region	North Lake Region
All Sites Combined	398.8	415.4 ↑	422.0	422.0	413.2	424.8	436.2	414.8	393.4 *	393.6	434.2
Breast	122.8	126.6	138.3 #	135.8	124.9	119.2	120.0	114.6	117.2	118.7	122.4
Colon and Rectum	47.5	52.8 ↑	47.0 *	55.6	49.8	59.3	63.2	53.0	50.4	54.8	53.5
Lung and Bronchus	51.2	52.7	57.0	46.2	54.0	63.0 #	67.5 #	57.9	40.3	49.5 *	58.3
Uterus	23.2	19.4 ↓	18.8	21.0	15.0	17.7	14.7	15.4	24.4 #	20.9	17.2
Kidney	12.7	15.8 ↑	13.7	16.2	18.2	20.1	17.7	17.0	14.1	11.9	20.3
Pancreas	14.2	14.2	10.7 *	17.2	15.3	13.8	15.7	16.5	12.0	14.0	21.2 #
Cervix	9.4	12.2 ↑	12.1	11.3	10.2	9.3	16.4	10.8	15.7	13.1	10.4
Non-Hodgkin lymphoma	11.9	12.2	14.2	10.6	10.5	11.0	11.5	17.3	9.6	10.3	16.9
Stomach	8.5	10.6 ↑	10.2	9	12.1	11.9	^	13	12.1	6.9	11.9
Ovary	9.8	9.6	9.7	10.5	6.6	10.4	11.8	8.5	10.0	8.7	8.4

¹Rates per 100,000 person-years, age-adjusted to the U.S. 2000 standard.

²Parishes for each OPH region listed in Appendix A

³U.S. incidence rate estimates are from the Surveillance, Epidemiology and end Results (SEER) Program of the National Cancer Institute, 18 regions. For a list of the 18 regions, see: <http://seer.cancer.gov/registries/list.html>.

↑ or ↓ The state rate is significantly higher or lower (p < 0.05) than the U.S. rate.

* The regional rate is significantly lower (p < 0.05) than the Louisiana rate.

The regional rate is significantly higher (p < 0.05) than the Louisiana rate.

^ Rates are not calculated if fewer than 16 cases are diagnosed during the five-year period.

Table H1. Number of Children and Adolescents Cancers¹, 2007-2011 Combined, Louisiana

ICCC ² Primary Site	All Races			Whites			Blacks		
	Total	Boys	Girls	Total	Boys	Girls	Total	Boys	Girls
All sites combined	1,160	614	546	771	396	375	356	198	158
Leukemias, myeloproliferative & myelodysplastic diseases	254	136	118	181	88	93	67	43	24
Lymphomas and reticuloendothelial neoplasms	142	91	51	78	51	27	60	37	23
CNS and misc intracranial and intraspinal neoplasms	286	138	148	194	95	99	82	39	43
Neuroblastoma and other peripheral nervous cell tumors	49	26	23	33	18	15	16	8	8
Retinoblastoma	18	8	10	12	5	7	6	3	3
Renal tumors	31	17	14	19	11	8	10	5	5
Hepatic tumors	13	9	4	9	7	2	3	1	2
Malignant bone tumors	59	30	29	35	12	23	23	17	6
Soft tissue and other extraosseous sarcomas	84	44	40	47	22	25	35	21	14
Germ cell & trophoblastic tumors & neoplasms of gonads	57	36	21	39	29	10	16	5	11
Other malignant epithelial neoplasms and melanomas	117	50	67	88	36	52	27	14	13
Other and unspecified malignant neoplasms	7	3	4	4	2	2	3	1	2
Not classified by ICCC or in situ	43	26	17	32	20	12	8	4	4

¹Children and adolescents cancers include patients aged 0-19 years.

²ICCC: International Classification of Childhood Cancer. <http://seer.cancer.gov/iccc/iccc-who2008.html>

Table H2. Percent Distribution of Children and Adolescents Cancers¹, 2007-2011 Combined, Louisiana

ICCC ² Primary Site	All Races			Whites			Blacks		
	Total	Boys	Girls	Total	Boys	Girls	Total	Boys	Girls
All sites combined	100.0	100.0	100.0	100.0	100.0	100.0	100.0	100.0	100.0
Leukemias, myeloproliferative & myelodysplastic diseases	21.9	22.1	21.6	23.5	22.2	24.8	18.8	21.7	15.2
Lymphomas and reticuloendothelial neoplasms	12.2	14.8	9.3	10.1	12.9	7.2	16.9	18.7	14.6
CNS and misc intracranial and intraspinal neoplasms	24.7	22.5	27.1	25.2	24.0	26.4	23.0	19.7	27.2
Neuroblastoma and other peripheral nervous cell tumors	4.2	4.2	4.2	4.3	4.5	4.0	4.5	4.0	5.1
Retinoblastoma	1.6	1.3	1.8	1.6	1.3	1.9	1.7	1.5	1.9
Renal tumors	2.7	2.8	2.6	2.5	2.8	2.1	2.8	2.5	3.2
Hepatic tumors	1.1	1.5	0.7	1.2	1.8	0.5	0.8	0.5	1.3
Malignant bone tumors	5.1	4.9	5.3	4.5	3.0	6.1	6.5	8.6	3.8
Soft tissue and other extraosseous sarcomas	7.2	7.2	7.3	6.1	5.6	6.7	9.8	10.6	8.9
Germ cell & trophoblastic tumors & neoplasms of gonads	4.9	5.9	3.8	5.1	7.3	2.7	4.5	2.5	7.0
Other malignant epithelial neoplasms and melanomas	10.1	8.1	12.3	11.4	9.1	13.9	7.6	7.1	8.2
Other and unspecified malignant neoplasms	0.6	0.5	0.7	0.5	0.5	0.5	0.8	0.5	1.3
Not classified by ICCC or in situ	3.7	4.2	3.1	4.2	5.1	3.2	2.2	2.0	2.5

¹Children and adolescents cancers include patients aged 0-19 years.

²ICCC: International Classification of Childhood Cancer. <http://seer.cancer.gov/iccc/iccc-who2008.html>

Table H3. Average Annual Cancer Incidence Rates¹ of Children and Adolescents Cancers², 2007-2011, Louisiana

ICCC ³ Primary Site	All Races			Whites			Blacks		
	Total	Boys	Girls	Total	Boys	Girls	Total	Boys	Girls
Leukemias, myeloproliferative & myelodysplastic diseases	40.5	42.6	38.3	49.9	47.5	52.5	27.0	34.2	19.5
Lymphomas and reticuloendothelial neoplasms	22.6	28.5	16.5	21.4	27.4	15.1	24.4	29.8	18.8
CNS and misc intracranial and intraspinal neoplasms	45.8	43.4	48.4	53.8	51.4	56.3	33.3	31.2	35.4
Neuroblastoma and other peripheral nervous cell tumors	7.7	8.0	7.4	9.0	9.6	^	6.4	^	^
Retinoblastoma	2.8	^	^	^	^	^	^	^	^
Renal tumors	4.9	5.3	^	5.2	^	^	^	^	^
Hepatic tumors	^	^	^	^	^	^	^	^	^
Malignant bone tumors	9.6	9.5	9.7	9.8	^	13.3	9.4	13.6	^
Soft tissue and other extraosseous sarcomas	13.4	13.8	13.0	12.9	11.9	14.1	14.1	16.7	^
Germ cell & trophoblastic tumors & neoplasms of gonads	9.0	11.1	6.8	10.7	15.5	^	6.3	^	^
Other malignant epithelial neoplasms and melanomas	18.6	15.6	21.6	24.2	19.4	29.3	10.7	^	^
Other and unspecified malignant neoplasms	^	^	^	^	^	^	^	^	^
Not classified by ICCC or in situ	6.9	8.3	5.5	8.9	11.0	^	^	^	^

¹Rates are per 1,000,000 and age-adjusted to the 2000 US Standard Population.

²Children and adolescents cancers include patients aged 0-19 years.

³ICCC: International Classification of Childhood Cancer. <http://seer.cancer.gov/iccc/iccc-who2008.html>

^Statistic not displayed due to fewer than 16 cases.

Table I1. Average Annual Number of Cancer Deaths by Site, Race, and Sex, 2007-2011, Louisiana

Primary Site	All Races			Whites			Blacks		
	Total	Males	Females	Total	Males	Females	Total	Males	Females
All Sites Combined	9093	4918	4176	6362	3433	2929	2664	1445	1219
Oral Cavity and Pharynx	157	117	39	108	77	31	48	39	8
Lip	^	^	^	^	^	^	^	^	^
Tongue	30	19	11	21	13	8	8	6	3
Salivary Gland	7	5	2	5	3	2	^	^	^
Floor of Mouth	^	^	^	^	^	^	^	^	^
Gum and Other Mouth	20	13	7	16	9	6	5	4	^
Nasopharynx	10	8	3	7	5	2	3	3	^
Tonsil	15	13	^	10	9	^	4	4	^
Oropharynx	12	10	2	8	7	^	4	4	^
Hypopharynx	3	3	^	^	^	^	^	^	^
Other	57	46	12	38	28	9	20	17	3
Digestive System	2325	1334	991	1543	893	650	757	429	329
Esophagus	206	161	45	148	117	31	57	43	14
Stomach	214	130	84	106	69	37	103	59	44
Small Intestine	18	10	9	11	7	5	7	3	4
Colon and Rectum	865	464	400	571	307	264	288	155	134
Colon	717	380	337	474	255	219	240	124	116
Rectum and Rectosigmoid Junction	147	84	63	97	52	45	48	30	18
Anus, Anal Canal and Anorectum	11	6	5	9	4	4	3	2	^
Liver and Intrahepatic Bile Duct	360	247	112	232	159	73	121	84	37
Liver	321	227	93	204	144	60	111	79	32
Intrahepatic Bile Duct	39	20	19	29	15	13	10	4	5
Gallbladder	29	10	19	18	7	11	10	3	7
Other Biliary Tract	19	10	8	14	8	6	5	2	2
Pancreas	580	285	295	416	209	207	158	74	84
Retroperitoneum	2	^	^	^	^	^	^	^	^
Peritoneum, Omentum and Mesentery	10	2	8	9	^	7	^	^	^
Other	12	7	5	7	4	4	4	3	^
Respiratory System	2777	1646	1130	2004	1150	854	753	483	270
Nose, Nasal Cavity and Middle Ear	7	4	3	5	3	2	2	^	^
Larynx	67	52	15	43	32	11	24	20	4
Lung and Bronchus	2694	1584	1110	1950	1111	839	725	461	264
Pleura	3	^	^	^	^	^	^	^	^
Trachea and Other	5	4	^	4	3	^	^	^	^
Bones and Joints	32	20	13	23	13	10	9	6	3
Soft Tissue (Incl. heart)	58	29	29	40	20	20	17	8	9
Skin (Excl. basal and squamous)	136	92	44	124	84	40	12	8	4
Melanoma of the Skin	98	65	33	93	63	30	5	3	3
Other Non Epithelial Skin	38	27	12	31	21	10	7	5	^
Breast	652	7	645	412	4	408	236	3	234
Female Genital System	382	--	382	260	--	260	120	--	120
Cervix Uteri	76	--	76	41	--	41	34	--	34
Corpus and Uterus, NOS	92	--	92	55	--	55	37	--	37
Corpus Uteri	39	--	39	23	--	23	16	--	16
Uterus, NOS	53	--	53	32	--	32	21	--	21
Ovary	188	--	188	144	--	144	43	--	43
Vagina	9	--	9	6	--	6	3	--	3
Vulva	11	--	11	10	--	10	^	--	^
Other	6	--	6	4	--	4	^	--	^
Male Genital System	429	429	--	259	259	--	168	168	--
Prostate	421	421	--	252	252	--	167	167	--
Testis	4	4	--	4	4	--	^	^	--
Penis	3	3	--	2	2	--	^	^	--
Other	^	^	--	^	^	--	^	^	--
Urinary System	430	272	158	327	215	112	102	57	45
Urinary Bladder (Incl. In Situ)	182	123	60	148	105	43	34	18	16
Kidney and Renal Pelvis	237	144	94	172	106	66	64	37	27

Ureter	4	^	2	3	^	2	^	^	^
Other	7	4	3	4	3	^	3	^	^
Eye and Orbit	3	^	2	3	^	2	^	^	^
Brain and Nervous System	196	108	88	158	89	70	37	19	18
Endocrine System	36	16	19	26	12	14	9	4	5
Thyroid	21	8	13	17	7	10	4	^	3
Thymus and Other Endocrine	14	8	6	9	5	4	5	3	2
Lymphoma	315	178	137	255	142	113	58	35	23
Hodgkin Lymphoma	22	12	10	16	8	8	6	4	2
Non Hodgkin lymphoma	294	166	128	239	133	106	52	31	21
Multiple Myeloma	172	94	77	99	54	45	72	39	33
Leukemia	327	187	140	248	145	102	78	41	37
Lymphocytic	79	46	33	62	35	27	17	11	7
Acute Lymphocytic	18	10	7	13	8	5	4	3	^
Chronic Lymphocytic	53	31	23	42	24	18	12	7	5
Other	8	5	4	7	4	3	^	^	^
Myeloid and Monocytic Leukemia	133	75	58	101	58	43	31	16	15
Acute Myeloid Leukemia	106	60	46	82	46	36	24	13	11
Acute Monocytic Leukemia	^	^	^	^	^	^	^	^	^
Chronic Myeloid Leukemia	17	10	7	12	8	4	5	2	2
Other Myeloid/Monocytic Leukemia	10	5	5	7	4	3	2	^	^
Other Leukemia	115	67	49	85	52	32	30	14	16
Other Acute Leukemia	25	13	12	20	11	9	4	2	2
Aleukemic, Subleukemic and NOS	90	53	37	64	41	23	25	12	14
III-Defined and Unknown Sites	667	387	280	473	275	198	186	106	80

^ The NCI does not present counts for cells smaller than 10.

-- Not applicable.

Table I2. Percent Distribution of Cancer Deaths by Site, Race, and Sex, 2007-2011, Louisiana

Primary Site	All Races			Whites			Blacks		
	Total	Males	Females	Total	Males	Females	Total	Males	Females
All Sites Combined	100.0	100.0	100.0	100.0	100.0	100.0	100.0	100.0	100.0
Oral Cavity and Pharynx	1.7	2.4	0.9	1.7	2.2	1.1	1.8	2.7	0.7
Lip	^	^	^	^	^	^	^	^	^
Tongue	0.3	0.4	0.3	0.3	0.4	0.3	0.3	0.4	0.2
Salivary Gland	0.1	0.1	0.1	0.1	0.1	0.1	^	^	^
Floor of Mouth	^	^	^	^	^	^	^	^	^
Gum and Other Mouth	0.2	0.3	0.2	0.2	0.3	0.2	0.2	0.3	^
Nasopharynx	0.1	0.2	0.1	0.1	0.1	0.1	0.1	0.2	^
Tonsil	0.2	0.3	^	0.2	0.3	^	0.2	0.3	^
Oropharynx	0.1	0.2	0.0	0.1	0.2	^	0.2	0.3	^
Hypopharynx	0.0	0.1	^	^	^	^	^	^	^
Other	0.6	0.9	0.3	0.6	0.8	0.3	0.7	1.2	0.2
Digestive System	25.6	27.1	23.7	24.3	26.0	22.2	28.4	29.7	27.0
Esophagus	2.3	3.3	1.1	2.3	3.4	1.1	2.2	3.0	1.2
Stomach	2.3	2.6	2.0	1.7	2.0	1.3	3.9	4.1	3.6
Small Intestine	0.2	0.2	0.2	0.2	0.2	0.2	0.3	0.2	0.3
Colon and Rectum	9.5	9.4	9.6	9.0	8.9	9.0	10.8	10.7	11.0
Colon	7.9	7.7	8.1	7.4	7.4	7.5	9.0	8.6	9.5
Rectum and Rectosigmoid Junction	1.6	1.7	1.5	1.5	1.5	1.5	1.8	2.1	1.5
Anus, Anal Canal and Anorectum	0.1	0.1	0.1	0.1	0.1	0.1	0.1	0.1	^
Liver and Intrahepatic Bile Duct	4.0	5.0	2.7	3.7	4.6	2.5	4.5	5.8	3.0
Liver	3.5	4.6	2.2	3.2	4.2	2.0	4.2	5.5	2.6
Intrahepatic Bile Duct	0.4	0.4	0.5	0.5	0.4	0.5	0.4	0.3	0.4
Gallbladder	0.3	0.2	0.5	0.3	0.2	0.4	0.4	0.2	0.6
Other Biliary Tract	0.2	0.2	0.2	0.2	0.2	0.2	0.2	0.2	0.2
Pancreas	6.4	5.8	7.1	6.5	6.1	7.1	5.9	5.1	6.9
Retroperitoneum	0.0	^	^	^	^	^	^	^	^
Peritoneum, Omentum and Mesentery	0.1	0.0	0.2	0.1	^	0.2	^	^	^
Other	0.1	0.1	0.1	0.1	0.1	0.1	0.2	0.2	^
Respiratory System	30.5	33.5	27.1	31.5	33.5	29.2	28.3	33.5	22.1
Nose, Nasal Cavity and Middle Ear	0.1	0.1	0.1	0.1	0.1	0.1	0.1	^	^
Larynx	0.7	1.1	0.4	0.7	0.9	0.4	0.9	1.4	0.3
Lung and Bronchus	29.6	32.2	26.6	30.7	32.3	28.7	27.2	31.9	21.7
Pleura	0.0	^	^	^	^	^	^	^	^
Trachea and Other	0.1	0.1	^	0.1	0.1	^	^	^	^
Bones and Joints	0.4	0.4	0.3	0.4	0.4	0.3	0.3	0.4	0.2
Soft Tissue (Incl. heart)	0.6	0.6	0.7	0.6	0.6	0.7	0.7	0.6	0.8
Skin (Excl. basal and squamous)	1.5	1.9	1.1	1.9	2.4	1.4	0.5	0.6	0.3
Melanoma of the Skin	1.1	1.3	0.8	1.5	1.8	1.0	0.2	0.2	0.2
Other Non Epithelial Skin	0.4	0.5	0.3	0.5	0.6	0.3	0.3	0.4	^
Breast	7.2	0.1	15.4	6.5	0.1	13.9	8.9	0.2	19.2
Female Genital System	4.2	--	9.1	4.1	--	8.9	4.5	--	9.8
Cervix Uteri	0.8	--	1.8	0.6	--	1.4	1.3	--	2.8
Corpus and Uterus, NOS	1.0	--	2.2	0.9	--	1.9	1.4	--	3.0
Corpus Uteri	0.4	--	0.9	0.4	--	0.8	0.6	--	1.3
Uterus, NOS	0.6	--	1.3	0.5	--	1.1	0.8	--	1.7
Ovary	2.1	--	4.5	2.3	--	4.9	1.6	--	3.6
Vagina	0.1	--	0.2	0.1	--	0.2	0.1	--	0.2
Vulva	0.1	--	0.3	0.2	--	0.3	^	--	^
Other	0.1	--	0.1	0.1	--	0.1	^	--	^
Male Genital System	4.7	8.7	--	4.1	7.5	--	6.3	11.7	--

Prostate	4.6	8.6	--	4.0	7.3	--	6.3	11.6	--
Testis	0.0	0.1	--	0.1	0.1	--	^	^	--
Penis	0.0	0.1	--	0.0	0.1	--	^	^	--
Other	^	^	--	^	^	--	^	^	--
Urinary System	4.7	5.5	3.8	5.1	6.3	3.8	3.8	3.9	3.7
Urinary Bladder (Incl. In Situ)	2.0	2.5	1.4	2.3	3.0	1.5	1.3	1.2	1.3
Kidney and Renal Pelvis	2.6	2.9	2.2	2.7	3.1	2.3	2.4	2.6	2.2
Ureter	0.0	^	0.1	0.1	^	0.1	^	^	^
Other	0.1	0.1	0.1	0.1	0.1	^	0.1	^	^
	0.0	0.0	0.0	0.0	0.0	0.0	0.0	0.0	0.0
Eye and Orbit	0.0	^	0.1	0.0	^	0.1	^	^	0.0
Brain and Nervous System	2.2	2.2	2.1	2.5	2.6	2.4	1.4	1.3	1.5
	0.0	0.0	0.0	0.0	0.0	0.0	0.0	0.0	0.0
Endocrine System	0.4	0.3	0.5	0.4	0.4	0.5	0.4	0.3	0.4
Thyroid	0.2	0.2	0.3	0.3	0.2	0.3	0.2	^	0.3
Thymus and Other Endocrine	0.2	0.2	0.2	0.1	0.1	0.1	0.2	0.2	0.2
Lymphoma	3.5	3.6	3.3	4.0	4.1	3.9	2.2	2.4	1.9
Hodgkin Lymphoma	0.2	0.2	0.2	0.3	0.2	0.3	0.2	0.2	0.2
Non Hodgkin lymphoma	3.2	3.4	3.1	3.8	3.9	3.6	2.0	2.1	1.8
Multiple Myeloma	1.9	1.9	1.8	1.6	1.6	1.5	2.7	2.7	2.7
Leukemia	3.6	3.8	3.4	3.9	4.2	3.5	2.9	2.8	3.1
Lymphocytic	0.9	0.9	0.8	1.0	1.0	0.9	0.7	0.7	0.6
Acute Lymphocytic	0.2	0.2	0.2	0.2	0.2	0.2	0.2	0.2	^
Chronic Lymphocytic	0.6	0.6	0.5	0.7	0.7	0.6	0.4	0.5	0.4
Other	0.1	0.1	0.1	0.1	0.1	0.1	^	^	^
Myeloid and Monocytic Leukemia	1.5	1.5	1.4	1.6	1.7	1.5	1.1	1.1	1.2
Acute Myeloid Leukemia	1.2	1.2	1.1	1.3	1.3	1.2	0.9	0.9	0.9
Acute Monocytic Leukemia	^	^	^	^	^	^	^	^	^
Chronic Myeloid Leukemia	0.2	0.2	0.2	0.2	0.2	0.1	0.2	0.2	0.2
Other Myeloid/Monocytic Leukemia	0.1	0.1	0.1	0.1	0.1	0.1	0.1	^	^
Other Leukemia	1.3	1.4	1.2	1.3	1.5	1.1	1.1	1.0	1.3
Other Acute Leukemia	0.3	0.3	0.3	0.3	0.3	0.3	0.2	0.2	0.2
Aleukemic, Subleukemic and NOS	1.0	1.1	0.9	1.0	1.2	0.8	1.0	0.8	1.1
III-Defined and Unknown Sites	7.3	7.9	6.7	7.4	8.0	6.8	7.0	7.4	6.5

^ The NCI does not present counts for cells smaller than 10.

-- Not applicable.

Table J. Average Annual Cancer Mortality Rate by Site, Race, and Sex, 2007-2011, Louisiana

Primary Site	All Races			Whites			Blacks		
	Total	Males	Females	Total	Males	Females	Total	Males	Females
All Sites Combined	198.6	250.7	162.2	188.6	234.4	155.9	232.6	311.5	182.5
Oral Cavity and Pharynx	3.3	5.5	1.5	3.1	4.9	1.6	3.7	7.2	1.1
Lip	^	^	^	^	^	^	^	0.0	^
Tongue	0.6	0.9	0.4	0.6	0.9	0.4	0.7	1.0	^
Salivary Gland	0.2	0.2	^	0.2	0.2	^	^	^	^
Floor of Mouth	^	^	^	^	^	^	^	^	^
Gum and Other Mouth	0.4	0.7	0.3	0.5	0.6	0.3	0.3	0.7	^
Nasopharynx	0.2	0.3	^	0.2	0.3	^	0.3	^	^
Tonsil	0.3	0.6	^	0.3	0.5	^	0.3	0.6	^
Oropharynx	0.3	0.5	^	0.2	0.4	^	0.3	0.6	^
Hypopharynx	0.1	^	^	^	^	^	^	^	^
Other	1.2	2.1	0.5	1.1	1.8	0.5	1.6	3.3	^
Digestive System	50.5	65.8	38.2	45.5	59.4	34.2	65.7	87.6	49.9
Esophagus	4.3	7.6	1.7	4.3	7.5	1.6	4.6	8.0	2.1
Stomach	4.7	6.6	3.3	3.2	4.7	2.0	9.3	13.0	6.8
Small Intestine	0.4	0.5	0.3	0.3	0.4	0.3	0.6	^	0.5
Colon and Rectum	18.9	23.3	15.4	16.9	20.7	13.8	25.3	33.1	20.0
Colon	15.7	19.4	12.9	14.1	17.3	11.4	21.2	27.0	17.3
Rectum and Rectosigmoid Junction	3.2	4.0	2.5	2.8	3.4	2.4	4.1	6.0	2.7
Anus, Anal Canal and Anorectum	0.2	0.3	0.2	0.3	0.3	0.2	^	^	^
Liver and Intrahepatic Bile Duct	7.6	11.6	4.3	6.8	10.3	3.9	9.6	14.9	5.5
Liver	6.7	10.6	3.6	5.9	9.3	3.2	8.7	14.0	4.7
Intrahepatic Bile Duct	0.8	1.0	0.7	0.8	1.0	0.7	0.8	0.9	0.8
Gallbladder	0.6	0.5	0.7	0.5	0.4	0.6	1.0	0.9	1.1
Other Biliary Tract	0.4	0.6	0.3	0.4	0.6	0.3	0.4	^	^
Pancreas	12.7	14.3	11.4	12.3	14.1	10.8	14.2	15.4	13.1
Retroperitoneum	^	^	^	^	^	^	^	^	^
Peritoneum, Omentum and Mesentery	0.2	^	0.3	0.3	^	0.4	^	^	^
Other	0.3	0.3	0.2	0.2	0.3	0.2	0.4	^	^
Respiratory System	60.1	82.0	43.9	58.9	76.6	45.6	65.1	101.5	40.5
Nose, Nasal Cavity and Middle Ear	0.2	0.2	0.1	0.1	^	^	^	^	^
Larynx	1.4	2.5	0.6	1.2	2.1	0.6	1.8	3.7	0.6
Lung and Bronchus	58.4	79.1	43.1	57.3	74.1	44.9	62.8	97.2	39.7
Pleura	^	^	^	^	^	^	^	^	^
Trachea and Other	0.1	0.2	^	0.1	^	^	^	^	^
Bones and Joints	0.7	1.0	0.5	0.7	0.9	0.5	0.7	1.3	^
Soft Tissue (Incl. heart)	1.3	1.4	1.1	1.2	1.4	1.1	1.3	1.4	1.3
Skin (Excl. basal and squamous)	3.0	4.8	1.7	3.7	5.8	2.1	1.0	1.5	0.6
Melanoma of the Skin	2.2	3.4	1.3	2.8	4.3	1.6	0.5	^	^
Other Non Epithelial Skin	0.8	1.4	0.4	0.9	1.5	0.5	0.5	0.9	^
Breast	14.1	0.3	25.0	12.2	0.3	21.8	19.9	^	33.9
Female Genital System	8.4	--	15.0	7.8	--	14.1	10.6	--	18.0
Cervix Uteri	1.7	--	3.1	1.3	--	2.5	2.7	--	4.9
Corpus and Uterus, NOS	2.0	--	3.6	1.6	--	3.0	3.4	--	5.6
Corpus Uteri	0.8	--	1.5	0.7	--	1.2	1.4	--	2.4
Uterus, NOS	1.2	--	2.1	1.0	--	1.7	1.9	--	3.2
Ovary	4.1	--	7.3	4.3	--	7.6	4.0	--	6.6
Vagina	0.2	--	0.3	0.2	--	0.3	^	--	^
Vulva	0.2	--	0.4	0.3	--	0.5	^	--	^
Other	0.1	--	0.2	0.1	--	0.2	^	--	^
Male Genital System	9.8	25.4	--	7.8	20.0	--	17.0	47.1	--
Prostate	9.7	25.1	--	7.6	19.6	--	16.9	46.8	--
Testis	0.1	0.2	--	0.1	0.3	--	^	^	--
Penis	0.1	0.2	--	^	^	--	^	^	--
Other	^	^	--	^	^	--	^	^	--
Urinary System	9.5	14.4	6.1	9.7	15.0	5.9	9.4	12.9	7.2
Urinary Bladder (Incl. In Situ)	4.1	7.1	2.3	4.4	7.8	2.2	3.4	4.8	2.6
Kidney and Renal Pelvis	5.1	7.0	3.6	5.0	6.9	3.5	5.6	7.6	4.2
Ureter	0.1	^	^	0.1	^	^	^	^	^
Other	0.2	0.2	^	0.1	^	^	^	^	^

Eye and Orbit	0.1	^	^	^	^	^	^	^	^
Brain and Nervous System	4.2	5.1	3.5	4.8	5.8	3.8	2.9	3.3	2.6
Endocrine System	0.8	0.8	0.8	0.8	0.8	0.8	0.7	0.6	0.8
Thyroid	0.5	0.4	0.5	0.5	0.5	0.5	0.4	^	0.5
Thymus and Other Endocrine	0.3	0.4	0.3	0.3	0.4	0.3	0.4	^	^
Lymphoma	7.1	9.2	5.4	7.7	9.9	6.0	4.9	6.6	3.5
Hodgkin Lymphoma	0.5	0.6	0.4	0.5	0.6	0.4	0.4	0.6	^
Non-Hodgkin Lymphoma	6.6	8.6	5.0	7.2	9.3	5.5	4.4	6.0	3.2
Multiple Myeloma	3.8	5.0	3.0	3.0	3.9	2.3	6.6	8.9	5.2
Leukemia	7.4	10.2	5.5	7.5	10.5	5.4	6.8	8.8	5.6
Lymphocytic	1.8	2.5	1.3	1.9	2.5	1.4	1.5	2.2	1.0
Acute Lymphocytic	0.4	0.5	0.3	0.4	0.6	0.3	0.3	^	^
Chronic Lymphocytic	1.2	1.7	0.9	1.2	1.7	0.9	1.1	1.6	0.7
Other	0.2	0.3	0.1	0.2	0.3	0.2	^	^	^
Myeloid and Monocytic Leukemia	3.0	3.9	2.3	3.1	4.1	2.3	2.5	3.2	2.1
Acute Myeloid Leukemia	2.4	3.1	1.8	2.5	3.3	2.0	2.0	2.7	1.5
Acute Monocytic Leukemia	^	^	^	^	^	^	^	^	^
Chronic Myeloid Leukemia	0.4	0.5	0.3	0.3	0.5	0.2	0.4	^	^
Other Myeloid/Monocytic Leukemia	0.2	0.3	0.2	0.2	0.3	0.2	^	^	^
Other Leukemia	2.6	3.8	1.9	2.6	3.9	1.7	2.8	3.3	2.5
Other Acute Leukemia	0.6	0.7	0.5	0.6	0.8	0.5	0.4	^	^
Aleukemic, Subleukemic and NOS	2.1	3.0	1.4	2.0	3.1	1.2	2.3	2.7	2.1
III-Defined and Unknown Sites	14.6	19.7	10.8	14.0	18.9	10.4	16.1	22.3	12.0

1. Average annual rate per 100,000 person years, age adjusted to the U.S. 2000 standard

^ Rates are not generated if fewer than 16 deaths occurred during these five years.

-- Not applicable

Table K. Average Annual Cancer Mortality Rates,¹ 2007-2011: U.S., Louisiana, Industrial Corridor²

Primary Site	White Males			White Females			Black Males			Black Females		
	US	LA	Ind. Corr.	US	LA	Ind. Corr.	US	LA	Ind. Corr.	US	LA	Ind. Corr.
All Sites Combined	209.8	234.4 ↑	207.8 *	147.5	155.9 ↑	146.5 *	269.3	311.5 ↑	310.4	169	182.5 ↑	180.7
Oral Cavity and Pharynx	3.7	4.9 ↑	3.4 *	1.4	1.6 ↑	1.7	5.1	7.2 ↑	6.3	1.4	1.1	^
Esophagus	7.8	7.5	7.1	1.5	1.6	1.3	7.4	8.0	7.0	2.0	2.1	^
Stomach	4.1	4.7 ↑	3.4	2.1	2.0	1.4	9.6	13 ↑	15.4	4.5	6.8 ↑	7.2
Colon & Rectum	18.5	20.7 ↑	19.1	13.0	13.8 ↑	12.6	27.7	33.1 ↑	34.2	18.5	20.0	18.5
Liver & Bile Duct	6.3	9.3 ↑	6.0 *	2.0	3.2 ↑	2.6	10.7	14.0 ↑	14.8	3.1	4.7 ↑	4.4
Pancreas	12.5	14.1 ↑	16.1	9.4	10.8 ↑	9.5	15.3	15.4	17.5	12.4	13.1	17.4 #
Larynx	1.8	2.1	^	0.4	0.6 ↑	^	3.8	3.7	3.8	0.6	0.6	^
Lung and Bronchus	61.4	74.1 ↑	65.4 *	39.8	44.9 ↑	41.6	75.7	97.2 ↑	96.3	36.5	39.7 ↑	37.7
Breast	0.3	0.3	^	21.7	21.8	20.5	0.5	^	^	30.6	33.9 ↑	34.3
Cervix Uteri	--	--	--	2.1	2.5 ↑	2.0	--	--	--	4.1	4.9 ↑	3.4
Uterus and Corpus	--	--	--	4.0	3.0 ↓	2.7	--	--	--	7.5	5.6 ↓	4.3
Ovary	--	--	--	8.2	7.6	8.1	--	--	--	6.6	6.6	5.3
Prostate	20.6	19.6	16.7	--	--	--	48.9	46.8	46.2	--	--	--
Urinary Bladder	8.1	7.8	7.8	2.2	2.2	2.0	5.4	4.8	4.6	2.6	2.6	3.3
Kidney and Renal Pelvis	5.9	6.9 ↑	5.7	2.6	3.5 ↑	3.8	5.6	7.6 ↑	4.4 *	2.6	4.2 ↑	4.5
Brain & Other Nervous System	5.6	5.8	5.9	3.8	3.8	4	3.0	3.3	4.2	2.1	2.6	2.3
Hodgkin Lymphoma	0.5	0.6	^	0.3	0.4	^	0.4	0.6	^	0.3	^	^
Non-Hodgkin Lymphoma	8.4	9.3 ↑	8.5	5.2	5.5	5.8	5.8	6.0	6.9	3.5	3.2	3.3
Multiple Myeloma	4.0	3.9	3.2	2.5	2.3	2.4	7.7	8.9	9.4	5.3	5.2	7.1
Leukemia	9.7	10.5 ↑	9.1	5.4	5.4	5.9	8.0	8.8	8.8	4.8	5.6 ↑	6.4

1. Rates per 100,000 person-years, age adjusted to the U.S. 2000 standard

2. The Industrial Corridor comprises Ascension, East Baton Rouge, Iberville, St. Charles, St. James, St. John the Baptist, and West Baton Rouge parishes.

-- Not applicable

^ Rates are not calculated if fewer than 16 deaths occur in the five-year period.

* The Industrial Corridor rate is significantly lower than the Louisiana rate ($p < 0.05$).

The Industrial Corridor rate is significantly higher than the Louisiana rate ($p < 0.05$).

↓ The Louisiana rate is significantly lower than the U.S. rate ($p < 0.05$).

↑ The Louisiana rate is significantly higher than the U.S. rate ($p < 0.05$).

Table L1. Ten Most Common Causes of Cancer Deaths, 2007-2011: White Males (1)Average Annual Mortality Rates¹ by Louisiana Parish²

Louisiana Parish	All Sites	Lung & Bronchus	Colon & Rectum	Prostate	Pancreas	Leukemia	Liver & Bile Duct	Hon- Hodgkin Lymphoma	Urinary Bladder	Esophagus	Kidney & Renal Pelvis
Louisiana	234.4	74.1	20.7	19.6	14.1	10.5	10.3	9.3	7.8	7.5	6.9
Acadia	293.4	100.3	23.4	31.9	^	^	^	^	^	^	14.9
Allen	165.1	50.0	^	^	^	^	^	^	^	^	^
Ascension	223.7	85.8	25.5	^	11.5	^	^	^	^	^	^
Assumption	213.7	73.0	^	^	^	^	^	^	^	^	^
Avoyelles	312.4	113.4	34.9	^	19.7	^	^	^	^	^	^
Beauregard	237.1	76.2	^	26.2	^	^	^	^	^	^	^
Bienville	232.4	55.4	^	^	^	^	^	^	^	^	^
Bossier	212.4	70.9	18.9	16.3	10.4	^	7.5	^	9.3	^	7.3
Caddo	232.1	74.6	21.0	20.6	12.1	10.8	7.8	9.2	7.3	8.2	5.7
Calcasieu	241.0	78.6	21.4	16.3	14.0	12.6	10.7	10.6	5.9	8.5	8.2
Caldwell	322.8	114.4	^	^	^	^	^	^	^	^	^
Cameron	233.2	^	^	^	^	^	^	^	^	^	^
Catahoula	267.7	91.5	^	^	^	^	^	^	^	^	^
Claiborne	231.3	63.3	^	^	^	^	^	^	^	^	^
Concordia	241.8	69.5	^	^	^	^	^	^	^	^	^
De Soto	244.8	78.0	^	^	^	^	^	^	^	^	^
East Baton Rouge	199.1	58.6	18.3	18.2	16.0	8.3	7.1	8.9	10.0	7.1	3.6
East Carroll	206.8	^	^	^	0.0	^	^	^	^	^	^
East Feliciana	265.2	112.6	^	^	^	^	^	^	^	^	^
Evangeline	245.0	93.7	29.5	^	^	^	^	^	^	^	^
Franklin	205.3	80.2	^	^	^	^	^	^	^	^	^
Grant	279.4	115.0	^	^	^	^	^	^	^	^	^
Iberia	273.9	92.1	30.0	18.9	20.6	^	16.4	^	^	^	^
Iberville	254.0	57.4	^	^	^	^	^	^	^	^	^
Jackson	245.6	79.0	^	^	^	^	^	^	^	^	^
Jefferson	232.6	63.3	19.1	19.1	14.0	10.4	14.4	11.1	8.9	8.9	7.4
Jefferson Davis	263.2	104.4	^	^	^	^	^	^	^	^	^
Lafayette	222.0	64.2	15.3	21.5	11.6	11.3	9.4	11.9	7.5	10.0	8.8
Lafourche	233.5	70.9	23.9	17.1	13.3	^	10.2	11.5	12.7	^	9.1
La Salle	264.1	86.4	^	^	^	^	^	^	^	^	^
Lincoln	234.9	47.7	32.9	^	^	^	^	^	^	^	^

Table L1. Ten Most Common Causes of Cancer Deaths, 2007-2011: White Males (2)

Louisiana Parish	All Sites	Lung	Colon & Rectum	Prostate	Pancreas	Leukemia	Liver & Bile Duct	Hon- Hodgkin Lymphoma	Urinary Bladder	Esophagus	Kidney & Renal Pelvis
Livingston	241.8	95.9	20.2	10.9	17.9	8.1	11.5	^	8.5	6.5	7.0
Madison	234.6	^	^	^	^	^	^	^	^	^	^
Morehouse	262.9	73.6	^	^	^	^	^	^	^	^	^
Natchitoches	220.6	71.0	^	^	^	^	^	^	^	^	^
Orleans	183.8	42.3	16.6	24.2	9.7	9.7	11.9	6.9	6.0	8.1	^
Ouachita	238.1	81.7	17.9	23.2	15.6	8.6	8.5	8.2	^	8.5	8.1
Plaquemines	184.0	^	^	^	^	^	^	^	^	0.0	^
Pointe Coupee	223.4	61.9	^	^	^	^	^	^	^	^	^
Rapides	224.2	75.8	18.9	15.5	11.2	11.6	7.3	^	^	8.9	7.1
Red River	173.6	^	^	^	^	^	^	^	^	^	^
Richland	261.5	86.5	^	^	^	^	^	^	^	^	^
Sabine	282.8	90.7	40.2	32.4	^	^	^	^	^	^	^
St. Bernard	312.8	102.5	^	^	^	^	^	^	^	^	^
St. Charles	214.3	67.9	^	^	^	^	^	^	^	^	^
St. Helena	292.2	122.3	^	^	^	^	^	^	^	^	^
St. James	204.6	79.9	^	^	^	^	^	^	^	^	^
St. John the Baptist	199.5	67.1	^	^	^	^	^	^	^	^	^
St. Landry	255.9	74.2	27.7	19.8	24.2	^	^	^	^	^	^
St. Martin	211.4	79.9	^	^	^	^	^	^	^	^	^
St. Mary	245.9	71.2	23.6	^	19.6	^	^	^	^	^	^
St. Tammany	223.5	67.2	17.1	21.7	12.2	13.1	10.6	8.7	8.4	7.7	6.4
Tangipahoa	276.7	87.5	24.4	18.5	16.6	13.8	12.9	11.0	^	10.4	^
Tensas	^	^	^	^	0.0	^	0.0	^	^	^	^
Terrebonne	263.3	76.6	27.2	19.5	13.9	16.9	14.3	11.6	^	^	10.7
Union	230.2	84.6	^	^	^	^	^	^	^	^	^
Vermilion	246.5	78.6	30.8	22.9	16.1	^	^	^	^	^	^
Vernon	282.0	98.9	21.9	^	^	26.3	^	^	^	^	^
Washington	286.8	89.6	28.2	22.2	^	^	23.2	^	^	^	^
Webster	253.4	86.0	19.7	^	18.1	^	^	^	^	^	^
West Baton Rouge	224.5	76.8	^	^	^	^	^	^	^	^	^
West Carroll	212.6	90.7	^	^	^	^	^	^	^	^	^
West Feliciana	200.1	83.8	^	^	^	^	^	^	^	^	^
Winn	310.2	105.0	^	^	^	^	^	^	^	^	^

¹Rates per 100,000 person-years, age adjusted to the U.S. 2000 standard.

²Deaths are assigned to the parish of residence, not where the death occurred.

^ Rates are not generated for cells with fewer than 16 deaths in five years.

Table L2. Ten Most Common Causes of Cancer Deaths, 2007-2011: White Females (1)
Average Annual Mortality Rates¹ by Louisiana Parish²

Louisiana Parish	All Sites	Lung & Bronchus	Breast	Colon & Rectum	Pancreas	Ovary	Hon- Hodgkin Lymphoma	Leukemia	Liver & Bile Duct	Brain & Nervous System	Kidney & Renal Pelvis
Louisiana	155.9	44.9	21.8	13.8	10.8	7.6	5.5	5.4	3.9	3.8	3.5
Acadia	187.9	56.8	30.0	13.6	14.4	^	^	^	^	^	^
Allen	121.7	^	^	^	^	^	^	^	^	^	^
Ascension	146.8	55.4	14.7	9.8	^	^	^	^	^	^	^
Assumption	133.9	46.5	^	^	^	^	^	^	^	^	^
Avoyelles	171.7	44.6	25.6	13.7	25.0	^	^	^	^	^	^
Beauregard	188.8	56.9	21.2	^	^	^	^	^	^	^	^
Bienville	172.8	64.7	^	^	^	^	^	^	^	^	^
Bossier	137.2	43.3	18.1	12.2	8.6	8.9	^	^	^	^	^
Caddo	153.0	41.8	20.9	11.7	12.6	6.9	5.0	6.5	6.0	5.5	^
Calcasieu	164.5	46.4	22.4	17.3	16.0	5.4	5.4	4.4	^	4.6	4.1
Caldwell	175.3	61.1	^	^	^	^	^	0.0	^	^	^
Cameron	106.8	^	^	^	^	^	^	^	^	^	^
Catahoula	163.6	^	^	^	^	^	^	^	^	^	^
Claiborne	120.4	^	^	^	^	^	^	^	^	^	^
Concordia	185.2	43.7	37.1	^	^	^	^	^	^	^	^
De Soto	170.1	32.4	^	^	^	^	^	^	^	^	^
East Baton Rouge	141.3	36.5	22.3	12.2	8.4	9.7	5.7	5.3	4.1	3.6	3.0
East Carroll	176.3	^	^	^	^	^	^	^	^	^	^
East Feliciana	168.5	^	^	^	^	^	^	^	^	^	^
Evangeline	171.3	50.2	29.3	30.7	^	^	^	^	^	^	^
Franklin	111.6	42.9	^	^	^	^	^	^	^	^	^
Grant	177.6	52.6	^	^	^	^	^	^	^	^	^
Iberia	178.3	63.7	21.3	18.2	^	^	^	^	^	^	^
Iberville	183.6	58.0	^	^	^	^	^	^	^	^	^
Jackson	187.7	58.9	^	^	^	^	^	^	^	^	^
Jefferson	161.4	43.7	22.9	15.0	9.2	9.5	5.7	6.9	4.1	3.1	3.6
Jefferson Davis	143.1	50.0	22.3	^	^	^	^	^	^	^	^
Lafayette	149.0	41.7	22.8	10.3	10.5	7.3	5.5	5.3	3.9	4.1	3.9
Lafourche	147.1	41.5	21.9	15.5	9.0	^	8.3	^	^	^	^
La Salle	183.5	61.1	39.6	^	^	^	^	^	^	^	^
Lincoln	144.1	35.9	34.2	^	^	^	^	^	^	^	^

Table L2. Ten Most Common Causes of Cancer Deaths, 2007-2011: White Females (2)

Louisiana Parish	All Sites	Lung & Bronchus	Breast	Colon & Rectum	Pancreas	Ovary	Hon- Hodgkin Lymphoma	Leukemia	Liver & Bile Duct	Brain & Nervous System	Kidney & Renal Pelvis
Livingston	146.7	44.2	18.8	10.3	12.4	9.6	^	^	^	^	^
Madison	144.5	^	^	^	^	^	^	^	^	^	^
Morehouse	163.7	46.7	^	^	^	^	^	^	^	^	^
Natchitoches	164.9	42.2	^	^	^	^	^	^	^	^	^
Orleans	140.6	32.9	25.0	14.5	8.0	7.8	6.4	5.8	^	^	^
Ouachita	149.0	45.1	17.9	15.6	9.7	6.5	4.6	4.9	^	^	^
Plaquemines	155.6	48.5	^	^	^	^	^	^	^	^	^
Pointe Coupee	160.0	56.4	^	^	^	^	^	^	^	^	^
Rapides	140.0	39.1	18.6	10.4	11.0	7.3	5.5	4.8	^	^	^
Red River	130.8	^	^	^	^	^	^	^	^	^	^
Richland	161.9	45.0	^	^	^	^	^	^	^	^	^
Sabine	193.2	56.4	^	29.7	^	^	^	^	^	^	^
St. Bernard	216.4	76.4	^	^	^	^	^	^	^	^	^
St. Charles	155.4	48.7	19.9	^	^	^	^	^	^	^	^
St. Helena	194.7	^	^	^	^	^	^	^	^	^	^
St. James	137.7	^	^	^	^	^	^	^	^	^	^
St. John the Baptist	191.6	48.2	32.6	^	^	^	^	^	^	^	^
St. Landry	166.9	50.2	22.9	15.6	17.3	^	^	^	^	^	^
St. Martin	159.5	54.4	21.1	^	^	^	^	^	^	^	^
St. Mary	171.3	47.1	17.0	^	^	^	^	^	^	^	^
St. Tammany	152.0	43.1	24.0	10.3	10.3	8.9	4.5	6.0	4.3	2.9	3.4
Tangipahoa	158.6	44.5	20.0	16.6	10.2	^	^	^	^	6.6	^
Tensas	^	^	^	^	^	^	^	^	^	^	^
Terrebonne	167.5	47.8	23.3	10.2	13.9	7.5	^	^	^	^	^
Union	179.4	51.7	30.9	^	^	^	^	^	^	^	^
Vermilion	163.2	52.0	20.5	16.3	^	^	^	^	^	^	^
Vernon	171.3	58.7	19.1	^	^	^	^	^	^	^	^
Washington	166.6	56.0	18.9	14.8	^	^	^	^	^	^	^
Webster	168.8	47.1	21.0	^	^	^	^	^	^	^	^
West Baton Rouge	119.2	^	^	^	^	^	^	^	^	^	^
West Carroll	160.2	61.9	^	^	^	^	^	^	^	^	^
West Feliciana	91.4	^	^	^	^	^	^	^	^	^	^
Winn	150.7	57.8	^	^	^	^	^	^	^	^	^

¹Rates per 100,000 person-years, age adjusted to the U.S. 2000 standard.

²Deaths are assigned to the parish of residence, not where the death occurred.

^ Rates are not generated for cells with fewer than 16 deaths in five years.

Table L3. Ten Most Common Causes of Cancer Deaths, 2007-2011: Black Males (2)

Louisiana Parish	All Sites	Lung & Bronchus	Prostate	Colon & Rectum	Pancreas	Liver & Bile Duct	Stomach	Myeloma	Leukemia	Esophagus	Kidney & Renal Pelvis
Livingston	297.5	^	^	^	^	^	^	^	^	^	^
Madison	283.6	^	^	^	^	^	^	^	^	^	^
Morehouse	249.0	70.6	^	^	^	^	^	^	^	^	^
Natchitoches	225.2	102.6	^	^	^	^	^	^	^	^	^
Orleans	328.6	102.7	44.4	35.8	13.7	23.6	13.0	9.6	11.6	4.2	9.9
Ouachita	324.1	94.4	64.9	42.7	^	^	^	^	^	^	^
Plaquemines	390.2	^	^	^	^	^	^	^	^	^	^
Pointe Coupee	310.1	98.9	^	^	^	^	^	^	^	^	^
Rapides	288.2	100.2	42.8	24.1	^	^	^	^	^	^	^
Red River	410.3	^	^	^	^	^	^	^	^	^	^
Richland	306.0	^	^	^	^	^	^	^	^	^	^
Sabine	322.6	^	^	^	^	^	^	^	^	^	^
St. Bernard	328.1	^	^	^	^	^	^	^	^	^	^
St. Charles	296.6	99.1	^	^	^	^	^	^	^	^	^
St. Helena	277.9	^	^	^	^	^	^	^	^	^	^
St. James	386.0	108.4	^	^	^	^	^	^	^	^	^
St. John the Baptist	299.1	87.9	^	^	^	^	^	^	^	^	^
St. Landry	341.4	112.5	31.4	34.2	^	^	^	^	^	^	^
St. Martin	354.6	97.7	^	^	^	^	^	^	^	^	^
St. Mary	283.2	90.9	^	^	^	^	^	^	^	^	^
St. Tammany	280.0	91.9	^	^	^	^	^	^	^	^	^
Tangipahoa	321.9	96.9	76.0	^	^	^	^	^	^	^	^
Tensas	384.0	^	^	^	^	^	^	^	^	^	^
Terrebonne	368.1	103.4	^	54.2	^	37.4	^	^	^	^	^
Union	251.1	^	^	^	^	^	^	^	^	^	^
Vermilion	413.5	138.5	^	^	^	^	^	^	^	^	^
Vernon	197.1	^	^	^	^	^	^	^	^	^	^
Washington	330.9	99.6	73.2	^	^	^	^	^	^	^	^
Webster	358.5	111.6	^	^	^	^	^	^	^	^	^
West Baton Rouge	244.2	97.9	^	^	^	^	^	^	^	^	^
West Carroll	^	^	^	^	^	^	^	^	^	^	^
West Feliciana	229.4	^	^	^	^	^	^	^	^	^	^
Winn	334.5	^	^	^	^	^	^	^	^	^	^

¹Rates per 100,000 person-years, age adjusted to the U.S. 2000 standard.

²Deaths are assigned to the parish of residence, not where the death occurred.

^ Rates are not generated for cells with fewer than 16 deaths in five years.

Table L4. Ten Most Common Causes of Cancer Deaths, 2007-2011: Black Females (1)Average Annual Mortality Rates¹ by Louisiana Parish²

Louisiana Parish	All Sites	Lung & Bronchus	Breast	Colon & Rectum	Pancreas	Stomach	Ovary	Leukemia	Corpus & Uterus, NOS	Liver & Bile Duct	Myeloma
Louisiana	182.5	39.7	33.9	20.0	13.1	6.8	6.6	5.6	5.6	5.5	5.2
Acadia	233.0	59.7	60.0	^	^	^	^	^	^	^	^
Allen	^	^	^	^	^	^	^	^	^	^	^
Ascension	181.1	^	41.1	^	^	^	^	^	^	^	^
Assumption	194.4	^	^	^	^	^	^	^	^	^	^
Avoyelles	217.4	67.9	^	^	^	^	^	^	^	^	^
Beauregard	190.5	^	^	^	^	^	^	^	^	^	^
Bienville	180.8	^	^	^	^	^	^	^	^	^	^
Bossier	147.8	32.3	^	^	^	^	^	^	^	^	^
Caddo	191.3	33.2	36.5	23.8	12.9	8.3	8.4	^	10.6	5.1	5.6
Calcasieu	185.9	45.9	27.7	22.3	^	^	^	^	^	^	^
Caldwell	^	^	^	^	^	^	^	^	^	^	^
Cameron	^	^	^	^	^	^	^	^	^	^	^
Catahoula	^	^	^	^	^	^	^	^	^	^	^
Claiborne	118.4	^	^	^	^	^	^	^	^	^	^
Concordia	172.8	^	^	^	^	^	^	^	^	^	^
De Soto	166.5	^	^	^	^	^	^	^	^	^	^
East Baton Rouge	177.6	35.3	32.0	18.6	15.9	6.4	6.2	6.2	5.8	6.0	8.0
East Carroll	186.6	^	^	^	^	^	^	^	^	^	^
East Feliciana	131.7	^	^	^	^	^	^	^	^	^	^
Evangeline	143.2	^	^	^	^	^	^	^	^	^	^
Franklin	138.9	^	^	^	^	^	^	^	^	^	^
Grant	^	^	^	^	^	^	^	^	^	^	^
Iberia	205.7	50.8	39.3	^	^	^	^	^	^	^	^
Iberville	188.3	^	^	^	^	^	^	^	^	^	^
Jackson	241.5	^	^	^	^	^	^	^	^	^	^
Jefferson	196.1	52.8	38.4	16.6	13.9	^	^	^	^	^	^
Jefferson Davis	219.4	^	^	^	^	^	^	^	^	^	^
Lafayette	179.2	39.8	28.4	15.4	^	^	^	^	^	^	^
Lafourche	250.2	^	65.3	^	^	^	^	^	^	^	^
La Salle	^	^	^	^	^	^	^	^	^	^	^
Lincoln	168.8	^	41.0	^	^	^	^	^	^	^	^

Table L4. Ten Most Common Causes of Cancer Deaths, 2007-2011: Black Females (2)

Louisiana Parish	All Sites	Lung & Bronchus	Breast	Colon & Rectum	Pancreas	Stomach	Ovary	Leukemia	Corpus & Uterus, NOS	Liver & Bile Duct	Myeloma
Livingston	226.6	^	^	^	^	^	^	^	^	^	^
Madison	196.0	^	^	^	^	^	^	^	^	^	^
Morehouse	171.0	^	^	^	^	^	^	^	^	^	^
Natchitoches	133.1	^	^	^	^	^	^	^	^	^	^
Orleans	177.8	41.2	34.2	18.9	8.8	4.9	8.1	5.6	5.1	7.6	3.8
Ouachita	197.5	41.4	36.9	20.1	^	^	^	^	^	^	^
Plaquemines	203.8	^	^	^	^	^	^	^	^	^	^
Pointe Coupee	150.8	^	^	^	^	^	^	^	^	^	^
Rapides	182.5	37.5	32.2	23.7	20.6	^	^	^	^	^	^
Red River	^	^	^	^	^	^	^	^	^	^	^
Richland	173.0	^	^	^	^	^	^	^	^	^	^
Sabine	183.9	^	^	^	^	^	^	^	^	^	^
St. Bernard	179.8	^	^	^	^	^	^	^	^	^	^
St. Charles	180.6	^	^	^	^	^	^	^	^	^	^
St. Helena	123.1	^	^	^	^	^	^	^	^	^	^
St. James	163.0	^	^	^	^	^	^	^	^	^	^
St. John the Baptist	223.2	55.4	47.5	^	^	^	^	^	^	^	^
St. Landry	218.5	47.7	30.5	27.2	21.0	^	^	^	^	^	^
St. Martin	154.4	44.7	^	^	^	^	^	^	^	^	^
St. Mary	222.2	46.1	^	^	^	^	^	^	^	^	^
St. Tammany	194.9	49.5	41.7	^	^	^	^	^	^	^	^
Tangipahoa	185.6	51.3	31.6	^	^	^	^	^	^	^	^
Tensas	204.3	^	^	^	^	^	^	^	^	^	^
Terrebonne	207.8	37.8	37.6	^	^	^	^	^	^	^	^
Union	215.8	^	^	^	^	^	^	^	^	^	^
Vermilion	196.2	^	^	^	^	^	^	^	^	^	^
Vernon	265.5	^	^	^	^	^	^	^	^	^	^
Washington	174.5	^	^	^	^	^	^	^	^	^	^
Webster	156.3	^	^	^	^	^	^	^	^	^	^
West Baton Rouge	162.4	^	^	^	^	^	^	^	^	^	^
West Carroll	^	^	^	^	^	^	^	^	^	^	^
West Feliciana	^	^	^	^	^	^	^	^	^	^	^
Winn	^	^	^	^	^	^	^	^	^	^	^

¹Rates per 100,000 person-years, age adjusted to the U.S. 2000 standard.

²Deaths are assigned to the parish of residence, not where the death occurred.

^ Rates are not generated for cells with fewer than 16 deaths in five years.

Table M1. Ten Most Common Causes of Cancer Death,¹ 2007-2011: White Males
U.S., Louisiana, and Louisiana Tumor Registry Regions²

Primary Site	U.S.	Louisiana	New Orleans Region	Baton Rouge Region	Southeast Region	Acadiana Region	Southwest Region	Central Region	Northwest Region	Northeast Region
All Sites Combined	209.8	234.4 ↑	224.1 *	226	232.7	245.5 #	235.2	258.8 #	231.5	238.9
Lung & Bronchus	61.4	74.1 ↑	60.1 *	74.9	70.6	78.0	78.9	90.3 #	74.6	77.9
Colon and Rectum	18.5	20.7 ↑	18.4	20.5	20.3	22.8	19.9	21.6	22.0	21.1
Prostate	20.6	19.6	20.8	17.1	19.8	20.9	17.2	21.9	19.4	21.1
Pancreas	12.5	14.1 ↑	13.2	15.4	13.8	15.4	12.1	15.0	12.5	14.9
Leukemia	9.7	10.5 ↑	10.2	8.5 *	12.5	10.2	12.9	12.7	10.0	9.6
Liver & Bile duct	7.8	10.3 ↑	14.2 #	9.3	11.1	9.5	10.2	8.7	8.9	8.8
Non-Hodgkin lymphoma	8.4	9.3 ↑	10.2	7.6	9.7	10.0	10.6	9.3	8.8	8.7
Urinary Bladder	8.1	7.8	8.5	9.1	8.0	7.8	5.9	6.3	8.2	5.4
Esophagus	7.8	7.5	8.6	7.1	7.1	7.6	7.7	7.5	6.7	7.6
Kidney and Renal Pelvis	5.9	6.9 ↑	6.4	6.3	7.2	9.0 #	7.3	6.8	5.4	8.2

¹Average annual rates per 100,000 person-years, age-adjusted to the U.S. 2000 standard.

²See Introduction for a list of parishes in LTR regions.

↑ or ↓ The Louisiana rate is significantly higher or lower ($p < 0.05$) than the U.S. rate.

* The regional rate is significantly lower ($p < 0.05$) than the Louisiana rate.

The regional rate is significantly higher ($p < 0.05$) than the Louisiana rate.

Table M2. Ten Most Common Causes of Cancer Death,¹ 2007-2011: White Females
U.S., Louisiana, and Louisiana Tumor Registry Regions²

Primary Site	U.S.	Louisiana	New Orleans Region	Baton Rouge Region	Southeast Region	Acadiana Region	Southwest Region	Central Region	Northwest Region	Northeast Region
All Sites Combined	147.5	155.9 ↑	159.0	147.1 *	156.2	164.1 #	159.2	158.3	153.7	152.9
Lung & Bronchus	39.8	44.9 ↑	42.9	42.5	44.9	49.9 #	45.6	46.0	43.0	46.4
Breast	21.7	21.8	23.0	20.6	22.9	22.9	21.4	22.3	19.3	21.2
Colon and Rectum	13.0	13.8 ↑	15.0	12.9	12.3	14.2	15.6	13.4	14.1	14.3
Pancreas	9.4	10.8 ↑	9.2	9.3	11.3	11.4	14.6 #	12.8	10.8	11.0
Ovary	8.2	7.6	9.2	8.2	7.0	6.4	5.7	8.0	7.9	7.6
Non-Hodgkin lymphoma	5.2	5.5	6.1	5.2	6.1	5.4	4.7	5.5	5.3	5.5
Leukemia	5.4	5.4	6.7	5.1	5.9	4.7	4.4	4.5	6.4	3.9
Brain & Nervous system	3.8	3.8	2.9	4.1	3.2	3.5	4.1	4.7	4.8	4.3
Liver and Bile duct	3.2	3.9 ↑	3.8	3.7	3.4	4.5	3.1	3.8	5.0	3.0
Kidney and Renal Pelvis	2.6	3.5 ↑	3.3	3.3	3.5	4.3	4.4	2.5	3.1	3.3

¹Average annual rates per 100,000 person-years, age-adjusted to the U.S. 2000 standard.

²See Introduction for a list of parishes in LTR regions.

↑ or ↓ The Louisiana rate is significantly higher or lower ($p < 0.05$) than the U.S. rate.

* The regional rate is significantly lower ($p < 0.05$) than the Louisiana rate.

The regional rate is significantly higher ($p < 0.05$) than the Louisiana rate.

Table M3. Ten Most Common Causes of Cancer Death,¹ 2007-2011: Black Males
U.S., Louisiana, and Louisiana Tumor Registry Regions²

Primary Site	U.S.	Louisiana	New Orleans Region	Baton Rouge Region	Southeast Region	Acadiana Region	Southwest Region	Central Region	Northwest Region	Northeast Region
All Sites Combined	269.3	311.5 ↑	320.0	301.9	322.7	336.4 #	266.0 *	315.8	307.4	305.1
Lung & Bronchus	75.7	97.2 ↑	97.6	94.5	100.1	103.9	88.1	97.4	100.0	91.1
Prostate	48.9	46.8	45.8	46.3	48.2	37.9	42.6	54.9	51.0	51.2
Colon and Rectum	27.7	33.1 ↑	36.2	31.8	36.0	31.3	28.1	28.5	33.8	33.7
Pancreas	15.3	15.4	14.1	16.5	17.0	19.1	15.7	13.8	12.6	16.0
Liver & Bile duct	12.1	14.9 ↑	20.2 #	14.5	19.2	16.6	10.6	10.0	11.7	7.6 *
Stomach	9.6	13.0 ↑	13.6	14.2	16.0	14.3	^	10.1	10.9	12.6
Myeloma	7.7	8.9	9.3	8.8	9.1	9.5	^	13.8	9.3	^
Leukemia	8.0	8.8	10.8	8.7	^	8.6	^	^	6.2	12.2
Esophagus	7.4	8.0	5.0 *	7.8	7.4	12.2 #	^	13.1	8.1	8.1
Kidney and Renal Pelvis	5.6	7.6 ↑	8.6	6.0	^	7.9	^	^	7.9	12.7 #

¹Average annual rates per 100,000 person-years, age-adjusted to the U.S. 2000 standard.

²See Introduction for a list of parishes in LTR regions.

↑ or ↓ The Louisiana rate is significantly higher or lower ($p < 0.05$) than the U.S. rate.

* The regional rate is significantly lower ($p < 0.05$) than the Louisiana rate.

The regional rate is significantly higher ($p < 0.05$) than the Louisiana rate.

Table M4. Ten Most Common Causes of Cancer Death,¹ 2007-2011: Black Females
U.S., Louisiana, and Louisiana Tumor Registry Regions²

Primary Site	U.S.	Louisiana	New Orleans Region	Baton Rouge Region	Southeast Region	Acadiana Region	Southwest Region	Central Region	Northwest Region	Northeast Region
All Sites Combined	169	182.5 ↑	183.2	173.8	199.0	196.1	180.1	187.7	171.6	187.3
Lung & Bronchus	36.5	39.7 ↑	44.5	35.8	43.5	45.0	46.1	40.9	31.2 *	39.0
Breast	30.6	33.9 ↑	35.4	33.4	41.0	31.3	27.1	30.4	32.6	36.3
Colon and Rectum	18.5	20.0	18.2	17.9	19.5	21.7	19.5	26.0	21.5	21.5
Pancreas	12.4	13.1	10.5	15.7	16.5	12.7	12.4	17.7	11.8	10.6
Stomach	4.5	6.8 ↑	5.4	5.4	10.3	9.3	^	8.7	7.0	^
Ovary	6.6	6.6	7.7	5.7	^	7.8	^	^	7.3	6.3
Leukemia	4.8	5.6 ↑	5.8	6.1	7.5	5.6	^	^	4.6	5.5
Corpus and Uterus NOS	4.2	5.6 ↑	4.9	5.1	^	7.4	^	^	7.1	5.6
Liver and Intrahepatic Bile Duct	7.5	5.5 ↓	7.2	5.3	^	5.0	10.2 #	^	4.2	^
Myeloma	5.3	5.2	4.1	7.3	^	7.1	^	^	3.9	^

¹Average annual rates per 100,000 person-years, age-adjusted to the U.S. 2000 standard.

²See Introduction for a list of parishes in LTR regions.

↑ or ↓ The Louisiana rate is significantly higher or lower ($p < 0.05$) than the U.S. rate.

* The regional rate is significantly lower ($p < 0.05$) than the Louisiana rate.

The regional rate is significantly higher ($p < 0.05$) than the Louisiana rate.

Table N1. Ten Most Common Causes of Cancer Death,¹ 2007-2011: White Males
U.S., Louisiana, and Louisiana Office of Public Health Regions²

Primary Site	U.S.	Louisiana	New Orleans Region	Baton Rouge Region	Southeast Region	Acadiana Region	Southwest Region	Central Region	Northwest Region	Northeast Region	North Lake Region
All Sites Combined	209.8	234.4 ↑	222.9 *	210.6 *	235.1	245.6 #	235.2	258.8 #	231.5	238.9	244.1
Lung & Bronchus	61.4	74.1 ↑	59.5 *	66.3 *	72.4	78.6	78.9	90.3 #	74.6	77.9	79.8
Colon and Rectum	18.5	20.7 ↑	18.0	19.3	22.5	22.7	19.9	21.6	22.0	21.1	20.7
Prostate	20.6	19.6	20.8	17.6	17.6	21.4	17.2	21.9	19.4	21.1	19.1
Pancreas	12.5	14.1 ↑	13.0	14.5	15.9	15.1	12.1	15.0	12.5	14.9	14.5
Leukemia	9.7	10.5 ↑	10.3	7.6 *	12.6	9.9	12.9	12.7	10.0	9.6	11.6
Liver & Bile duct	7.8	10.3 ↑	14.0 #	7.8 *	10.6	9.4	10.2	8.7	8.9	8.8	12.2
Non-Hodgkin lymphoma	8.4	9.3 ↑	10.0	8.1	9.9	9.9	10.6	9.3	8.8	8.7	8.6
Urinary Bladder	8.1	7.8	8.9	9.6	7.2	7.6	5.9	6.3	8.2	5.4	8.1
Esophagus	7.8	7.5	8.4	6.6	5.6	8.1	7.7	7.5	6.7	7.6	8.5
Kidney and Renal Pelvis	5.9	6.9 ↑	6.4	6.3	7.9	9.2 #	7.3	6.8	5.4	8.2	6.4

¹Average annual rates per 100,000 person-years, age-adjusted to the U.S. 2000 standard.

²Parishes for each OPH region listed in Appendix A

↑ or ↓ The Louisiana rate is significantly higher or lower ($p < 0.05$) than the U.S. rate.

* The regional rate is significantly lower ($p < 0.05$) than the Louisiana rate.

The regional rate is significantly higher ($p < 0.05$) than the Louisiana rate.

Table N2. Ten Most Common Causes of Cancer Death,¹ 2007-2011: White Females
U.S., Louisiana, and Louisiana Office of Public Health Regions²

Primary Site	U.S.	Louisiana	New Orleans Region	Baton Rouge Region	Southeast Region	Acadiana Region	Southwest Region	Central Region	Northwest Region	Northeast Region	North Lake Region
All Sites Combined	147.5	155.9 ↑	158.9	143.9 *	158.8	163.5 #	159.2	158.3	153.7	152.9	154.0
Lung & Bronchus	39.8	44.9 ↑	43.0	41.2	45.3	50.1 #	45.6	46.0	43.0	46.4	44.9
Breast	21.7	21.8	23.0	20.7	21.9	23.5	21.4	22.3	19.3	21.2	21.9
Colon and Rectum	13.0	13.8 ↑	14.9	12.4	13.2	14.4	15.6	13.4	14.1	14.3	12.3
Pancreas	9.4	10.8 ↑	9.4	8.8 *	11.4	11.2	14.6 #	12.8	10.8	11.0	10.8
Ovary	8.2	7.6	9.0	8.3	6.2	6.5	5.7	8.0	7.9	7.6	8.1
Non-Hodgkin Lymphoma	5.2	5.5	6.0	5.2	7.7 #	5.3	4.7	5.5	5.3	5.5	4.8
Leukemia	5.4	5.4	6.8 #	5.6	6.0	4.5	4.4	4.5	6.4	3.9	5.0
Brain & Nervous system	3.8	3.8	2.9	3.8	3.5	3.4	4.1	4.7	4.8	4.3	3.9
Liver and Bile duct	3.2	3.9 ↑	3.7	3.5	2.9	4.5	3.1	3.8	5.0	3.0	4.2
Kidney and Renal Pelvis	2.6	3.5 ↑	3.4	3.5	4.0	4.2	4.4	2.5	3.1	3.3	2.9

¹Average annual rates per 100,000 person-years, age-adjusted to the U.S. 2000 standard.

²Parishes for each OPH region listed in Appendix A

↑ or ↓ The Louisiana rate is significantly higher or lower (p < 0.05) than the U.S. rate.

* The regional rate is significantly lower (p < 0.05) than the Louisiana rate.

The regional rate is significantly higher (p < 0.05) than the Louisiana rate.

Table N3. Ten Most Common Causes of Cancer Death,¹ 2007-2011: Black Males
U.S., Louisiana, and Louisiana Office of Public Health Regions²

Primary Site	U.S.	Louisiana	New Orleans Region	Baton Rouge Region	Southeast Region	Acadiana Region	Southwest Region	Central Region	Northwest Region	Northeast Region	North Lake Region
All Sites Combined	269.3	311.5 ↑	320.9	300.1	323.7	342.8 #	266.0 *	315.8	307.4	305.1	305.6
Lung & Bronchus	75.7	97.2 ↑	98.2	94.9	99.5	105.2	88.1	97.4	100.0	91.1	93.5
Prostate	48.9	46.8	45.0	44.2	41.9	39.4	42.6	54.9	51.0	51.2	58.6
Colon and Rectum	27.7	33.1 ↑	36.4	34.1	34.6	30.4	28.1	28.5	33.8	33.7	28.4
Pancreas	15.3	15.4	14.4	16.9	20.0	17.6	15.7	13.8	12.6	16.0	14.9
Liver & Bile duct	12.1	14.9 ↑	20.0 #	14.0	20.2	17.9	10.6	10.0	11.7	7.6 *	14.0
Stomach	9.6	13.0 ↑	14.6	13.7	17.5	14.4	^	10.1	10.9	12.6	10.8
Myeloma	7.7	8.9	9.3	9.5	^	10.2	^	13.8	9.3	^	^
Leukemia	8.0	8.8	10.7	8.5	^	8.8	^	^	6.2	12.2	^
Esophagus	7.4	8.0	4.9 *	7.4	7.7	12.7 #	^	13.1	8.1	8.1	^
Kidney and Renal Pelvis	5.6	7.6 ↑	8.4	4.3 *	9.2	7.6	^	^	7.9	12.7 #	^

¹Average annual rates per 100,000 person-years, age-adjusted to the U.S. 2000 standard.

²Parishes for each OPH region listed in Appendix A

↑ or ↓ The Louisiana rate is significantly higher or lower (p < 0.05) than the U.S. rate.

* The regional rate is significantly lower (p < 0.05) than the Louisiana rate.

The regional rate is significantly higher (p < 0.05) than the Louisiana rate.

Table N4. Ten Most Common Causes of Cancer Death,¹ 2007-2011: Black Females
U.S., Louisiana, and Louisiana Office of Public Health Regions²

Primary Site	U.S.	Louisiana	New Orleans Region	Baton Rouge Region	Southeast Region	Acadiana Region	Southwest Region	Central Region	Northwest Region	Northeast Region	North Lake Region
All Sites Combined	169.0	182.5 ↑	183.4	171.6	208.8 #	193.1	180.1	187.7	171.6	187.3	183.3
Lung & Bronchus	36.5	39.7 ↑	44.0	33.9 *	45.9	45.1	46.1	40.9	31.2 *	39.0	43.6
Breast	30.6	33.9 ↑	35.7	33.5	41.0	31.3	27.1	30.4	32.6	36.3	32.7
Colon and Rectum	18.5	20.0	18.0	18.3	22.9	20.0	19.5	26.0	21.5	21.5	18.1
Pancreas	12.4	13.1	10.7	15.7	16.2	13.0	12.4	17.7	11.8	10.6	15.1
Stomach	4.5	6.8 ↑	5.4	6.1	9.3	9.8	^	8.7	7.0	^	^
Ovary	6.6	6.6	7.7	5.8	7.2	8.2	^	^	7.3	6.3	^
Leukemia	4.8	5.6 ↑	5.9	5.8	7.6	5.7	^	^	4.6	5.5	^
Corpus and Uterus NOS	4.2	5.6 ↑	5.0	4.8	^	7.2	^	^	7.1	5.6	^
Liver and Intrahepatic Bile Duct	7.5	5.5 ↓	7.4	4.7	^	5.6	10.2 #	^	4.2	^	^
Myeloma	5.3	5.2	4.2	7.5	^	6.8	^	^	3.9	^	^

¹Average annual rates per 100,000 person-years, age-adjusted to the U.S. 2000 standard.

²Parishes for each OPH region listed in Appendix A

↑ or ↓ The Louisiana rate is significantly higher or lower (p < 0.05) than the U.S. rate.

* The regional rate is significantly lower (p < 0.05) than the Louisiana rate.

The regional rate is significantly higher (p < 0.05) than the Louisiana rate.